



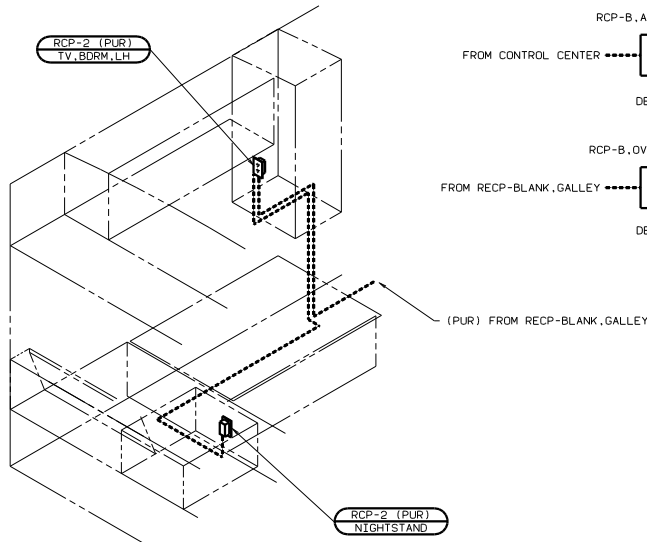
DANGER

Danger of electrical shock, burns or death. Always remove all power sources before attempting any repair, service or diagnostic work. Power can be present from shore power, generator, inverter or battery. All power sources must be disabled and secured before performing any service.

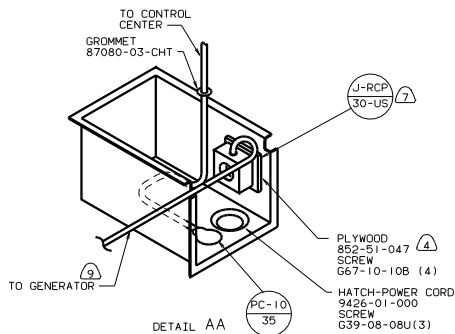


CAUTION

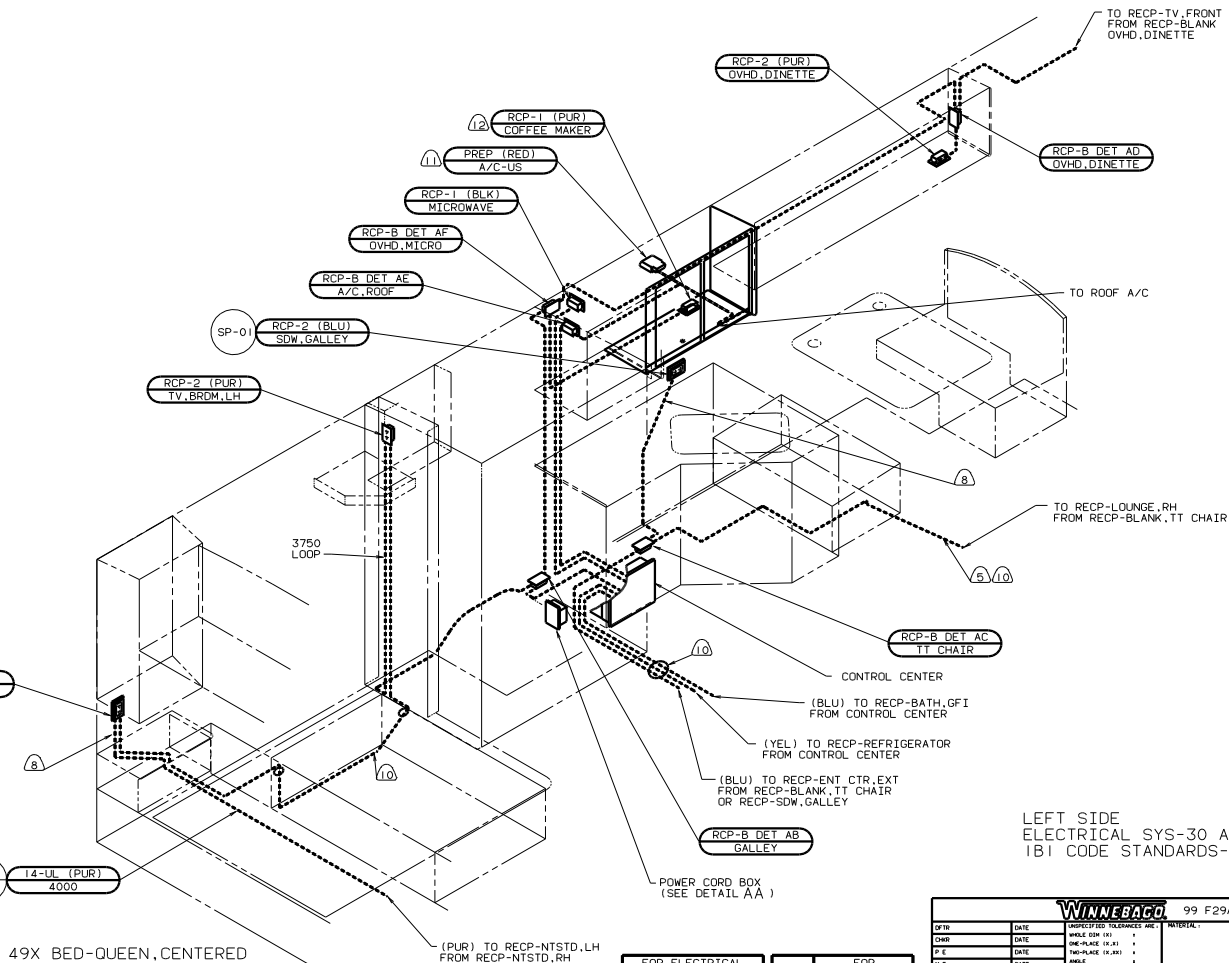
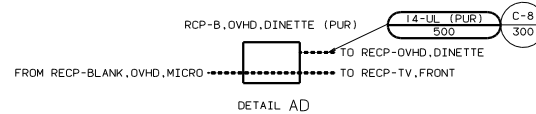
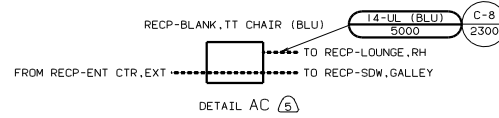
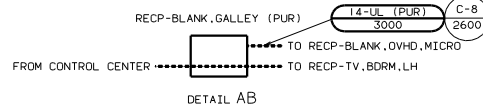
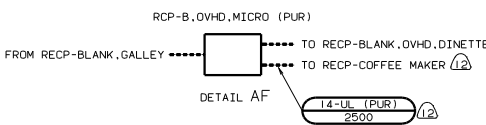
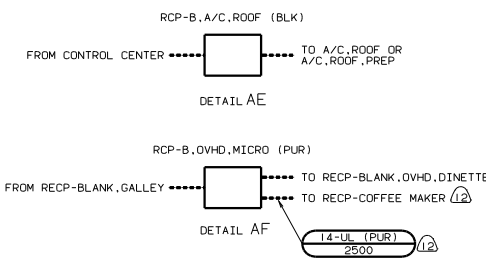
If you lack the skills, tools or equipment to perform diagnostic or repair work leave such work to an authorized Winnebago Industries dealer or other qualified shop.



45G BED-TWINS



- (12) 26U COFFEE MAKER.
- (11) USE WITH A/C PREP WIRING
- (10) WIRE ROUTED THROUGH FLOOR.
- (9) SEE GENERATOR INSTALLATION FOR ADDITIONAL INFORMATION.
- (8) WIRE ROUTED THROUGH SIDEWALL.
- (7) INSTALL RECP WITH GROUND TOWARD OUTBOARD SIDE OF VEHICLE.
- (6) WITH 49X BED-QUEEN, CENTERED.
- (5) 14F LGE CHAIRS-2 W/TABLE
- (4) PAINT EXPOSED SURFACES BLACK WITH 108112-01-000.
- 3. ALL GROUND WIRES TO BE COVERED WITH TUBING 8041-02-000.
- 2. ALL WIRES ARE TO BE CLAMPED WITH CLAMP 10495-01-000 OR CLIP 80734-02-000 EVERY 600, USE SCREW G67-10-12B UNLESS OTHERWISE SPECIFIED.
- 1. ALL WIRE TO BE CLAMPED WITH CLAMP 10495-01-000 OR CLIP 80734-02-000 EVERY 600, USE SCREW G67-10-12B UNLESS OTHERWISE SPECIFIED.



LEFT SIDE
 ELECTRICAL SYS-30 AMP
 IBI CODE STANDARDS-USA

FOR ELECTRICAL TORQUE SPECIFICATIONS SEE DWG NO. 128783-01-000		FOR ELECTRICAL CALLOUTS SEE DWG NO. 121339-01-000	
--	--	---	--

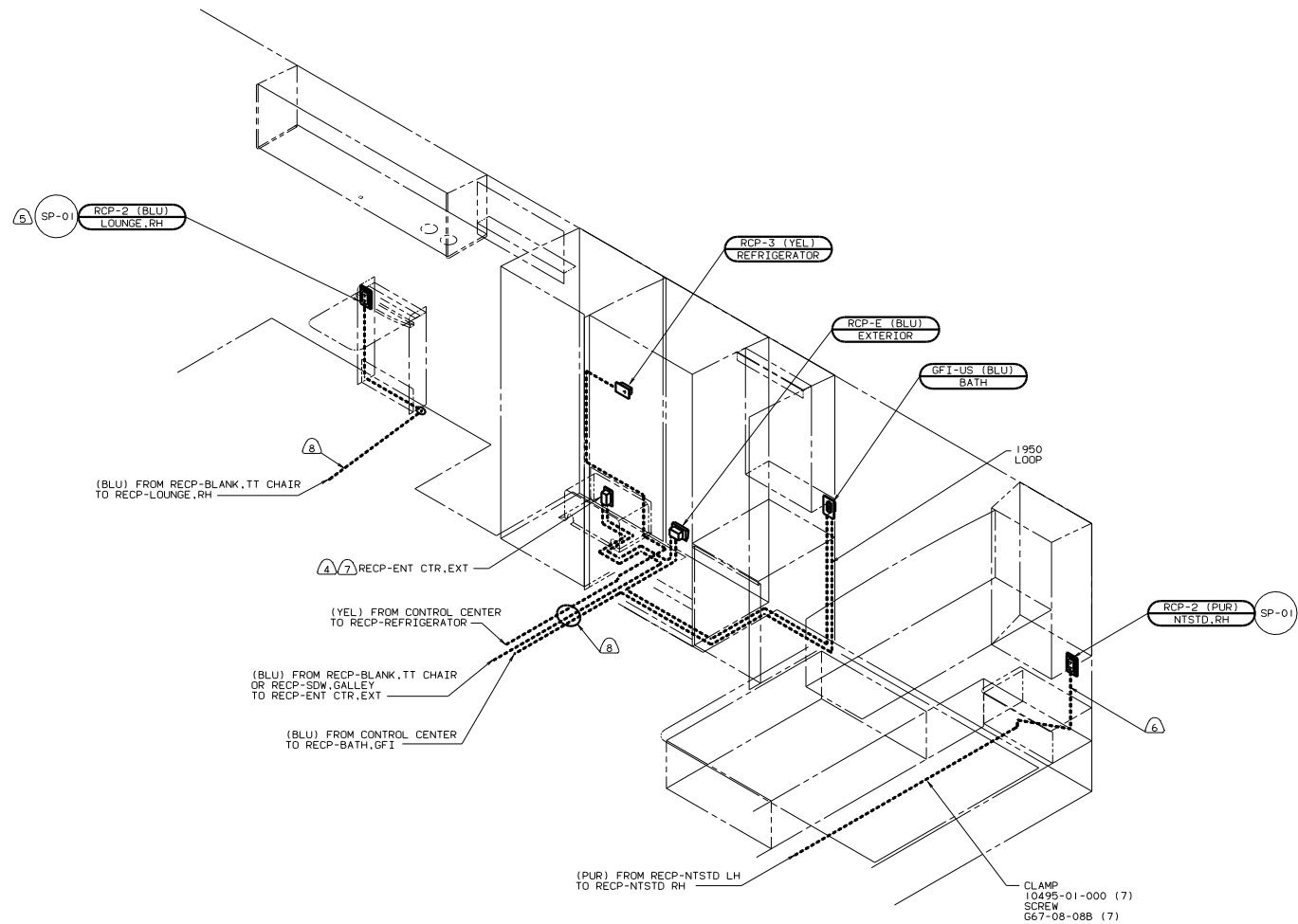
DATE		UNSPECIFIED TOLERANCES ARE	MATERIAL	
CHP	DATE	WHOLE OR 1/2"		
PTH	DATE	ONE-PLACE (1/32, 1/16)		
PLC	DATE	TWO-PLACE (1/32, 1/64)		
MDL	DATE	THIRD PLACE (1/32)		
DATE	DATE	THIRD PLACE (1/32)		
DATE	DATE	THIRD PLACE (1/32)		

WINNEBAGO 99 F29A

WIRING INSTL - BODY (1101.30US)

SHEET 1 OF 11

REF 127129 M 1



49X BED-QUEEN, CENTERED

- ⑧ WIRE ROUTED THROUGH FLOOR.
 - ⑦ SEE ENTERTAINMENT CENTER COMP. FOR ADDITIONAL INFORMATION.
 - ⑥ WIRE ROUTED THROUGH SIDEWALL.
 - ⑤ 14F LGE CHAIRS-2 W/TABLE
 - ④ 76C ENTERTAINMENT CTR-EXT.
3. ALL GROUND WIRES TO BE COVERED WITH TUBING 8041-02-000.
2. ALL WIRES ARE TO BE CLAMPED WITH CLAMP 10497-05-000 WITHIN 200 OF OUTLET BOXES AND SPLICES. USE SCREW G67-10-12B.
1. ALL WIRE TO BE CLAMPED WITH CLAMP 10495-01-000 OR CLIP 80734-02-000 EVERY 600. USE SCREW G67-10-12B UNLESS OTHERWISE SPECIFIED.

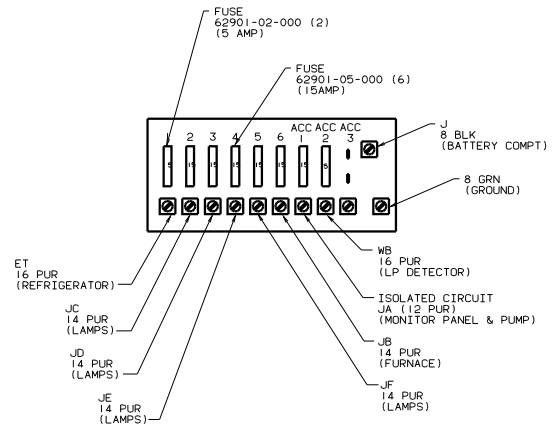
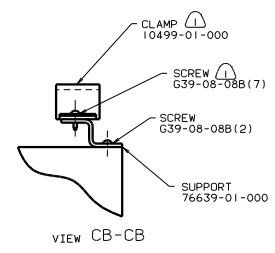
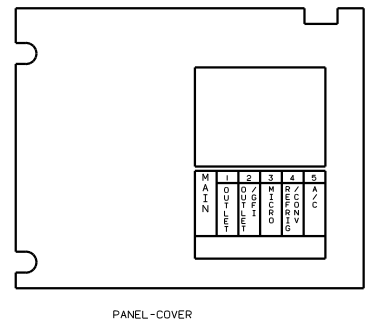
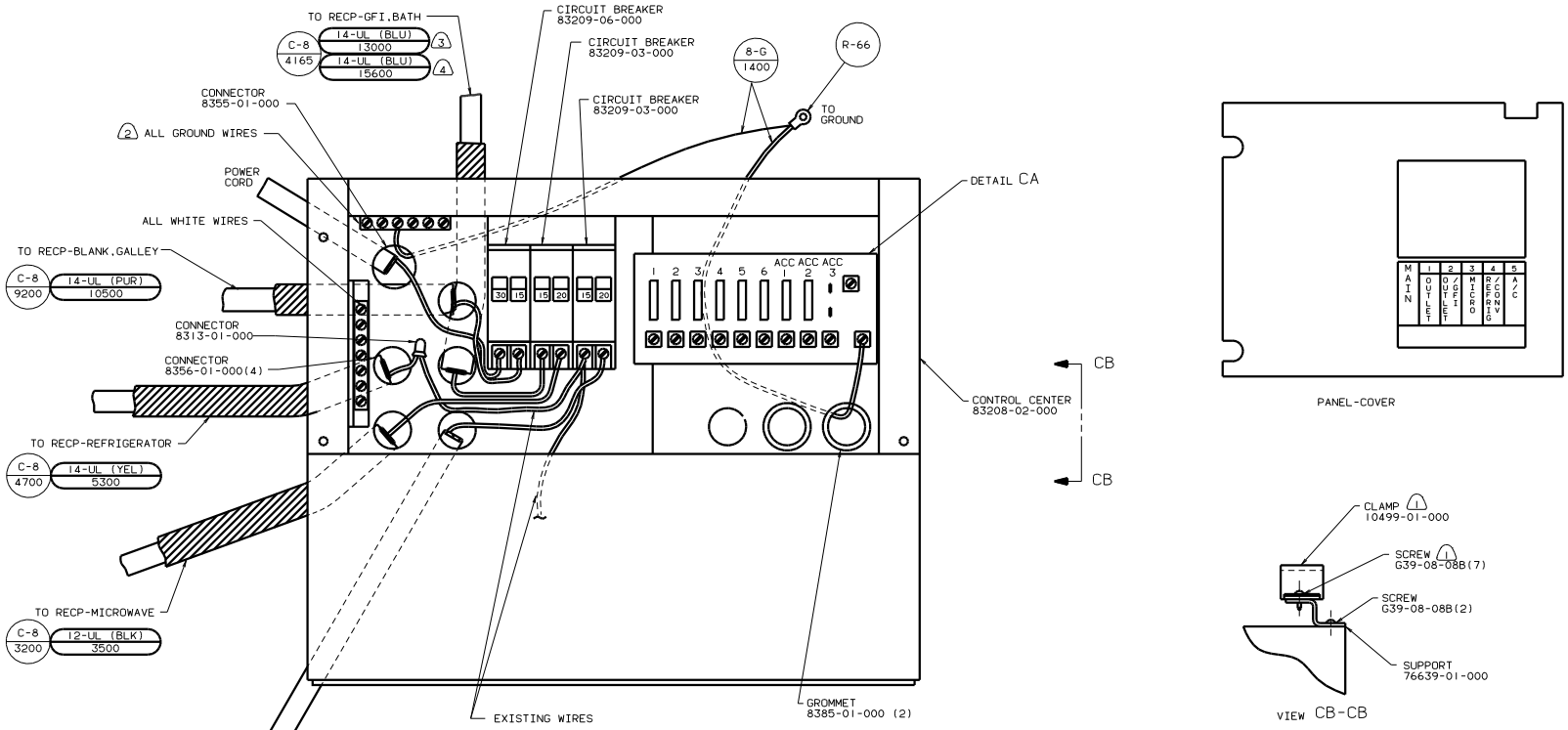
NOTES:

FOR ELECTRICAL TORQUE SPECIFICATIONS SEE DWG NO. 128783-01-000

FOR ELECTRICAL CALLOUTS SEE DWG NO. 121339-01-000

99 F29A
 1B1 CODE STANDARDS-USA
 12D ELECTRICAL SYS-30 AMP

WIRING INSTL-BODY (11 OR 30US)
 SHEET 2 OF 11
 129555

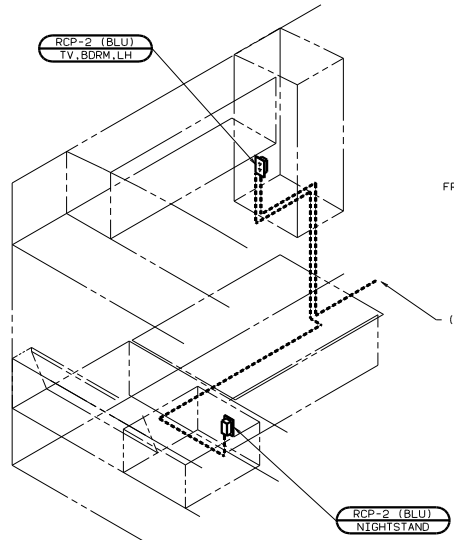


- ④ WITH 76C ENTERTAINMENT CTR.EXT.
- ③ NOT USED WITH 76C ENTERTAINMENT CTR.EXT.
- ② ALL GROUND WIRES TO BE COVERED WITH TUBING 8041-02-000.
- ① FASTEN ALL WIRES TO SUPPORT, USE WITH ONE SCREW PER CLAMP.

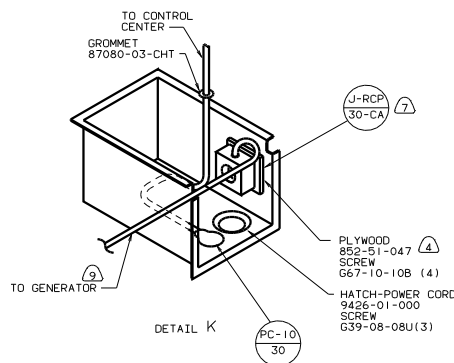
FOR ELECTRICAL TORQUE SPECIFICATIONS SEE DWG NO. 128783-01-000

X-X FOR ELECTRICAL CALLOUTS SEE DWG NO. 121339-01-000

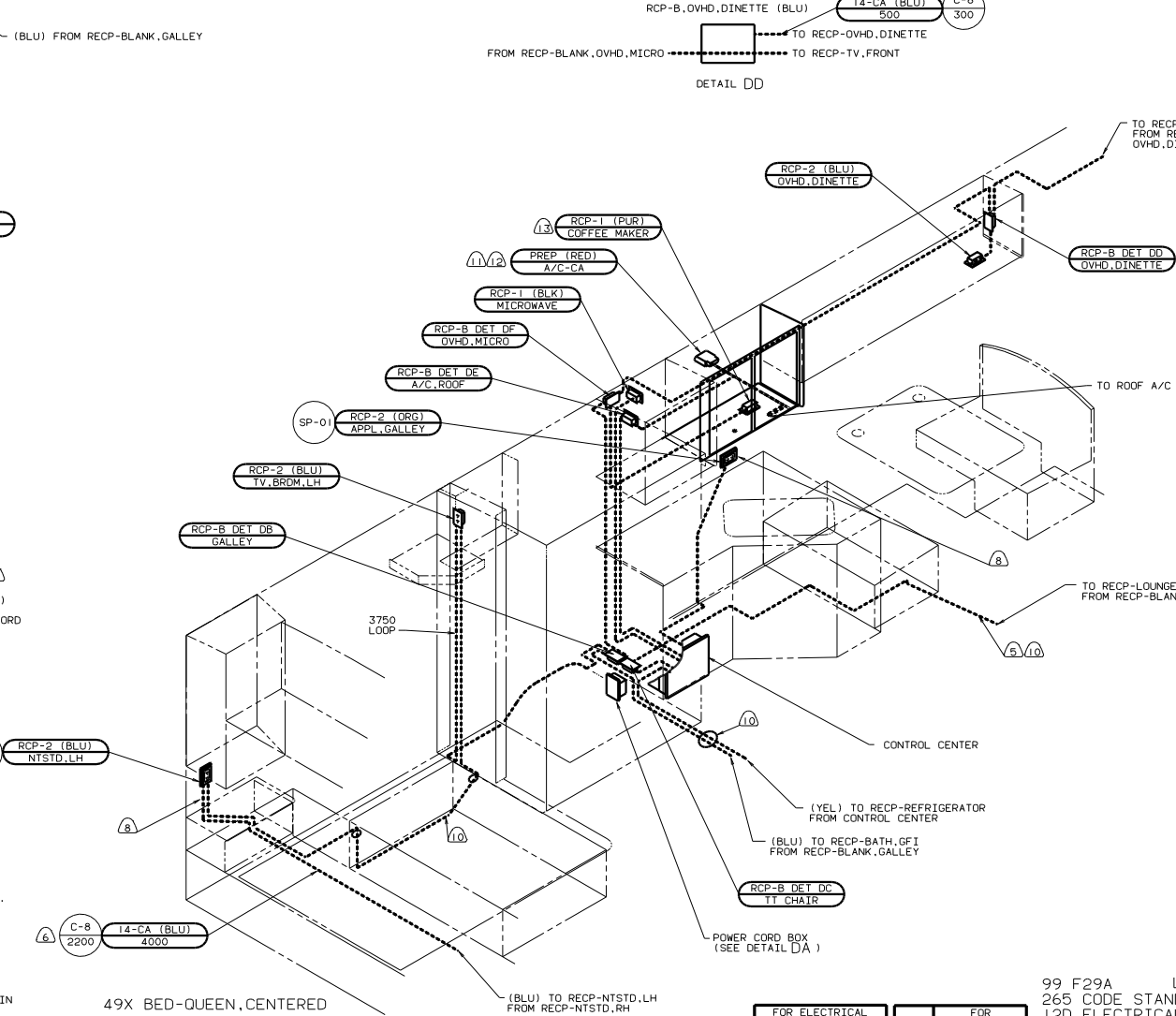
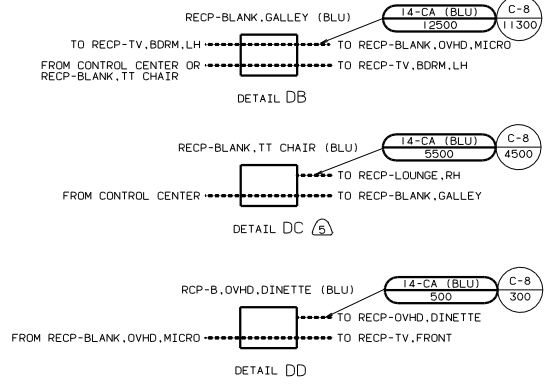
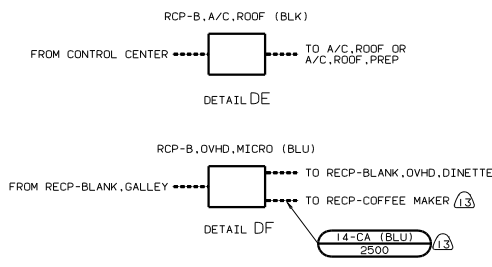
99 F29A CONTROL CENTER
 IB1 CODE STANDARDS-USA
 I2D ELECTRICAL SYS-30 AMP



45G BED-TWINS



1. ALL WIRE TO BE CLAMPED WITH CLAMP 10495-01-000 OR CLIP 80734-02-000 EVERY 600. USE SCREW G67-10-12B UNLESS OTHERWISE SPECIFIED.
2. ALL WIRES ARE TO BE CLAMPED WITH CLAMP 10497-05-000 WITHIN 200 OF OUTLET BOXES AND SPLICES. USE SCREW G67-10-12B.
3. ALL GROUND WIRES TO BE COVERED WITH TUBING 8041-02-000.
4. PAINT EXPOSED SURFACES BLACK WITH 108112-01-000.
5. 14F LGE CHAIRS-2 W/TABLE
6. WITH 49X BED-QUEEN, CENTERED.
7. INSTALL RECP WITH GROUND TOWARD OUTBOARD SIDE OF VEHICLE.
8. WIRE ROUTED THROUGH SIDEWALL.
9. SEE GENERATOR INSTALLATION FOR ADDITIONAL INFORMATION.
10. WIRE ROUTED THROUGH FLOOR.
11. USE WITH A/C PREP WIRING
12. COVER GROUND WIRING WITH TUBING 8041-02-000.
13. 26U COFFEE MAKER.



49X BED-QUEEN, CENTERED

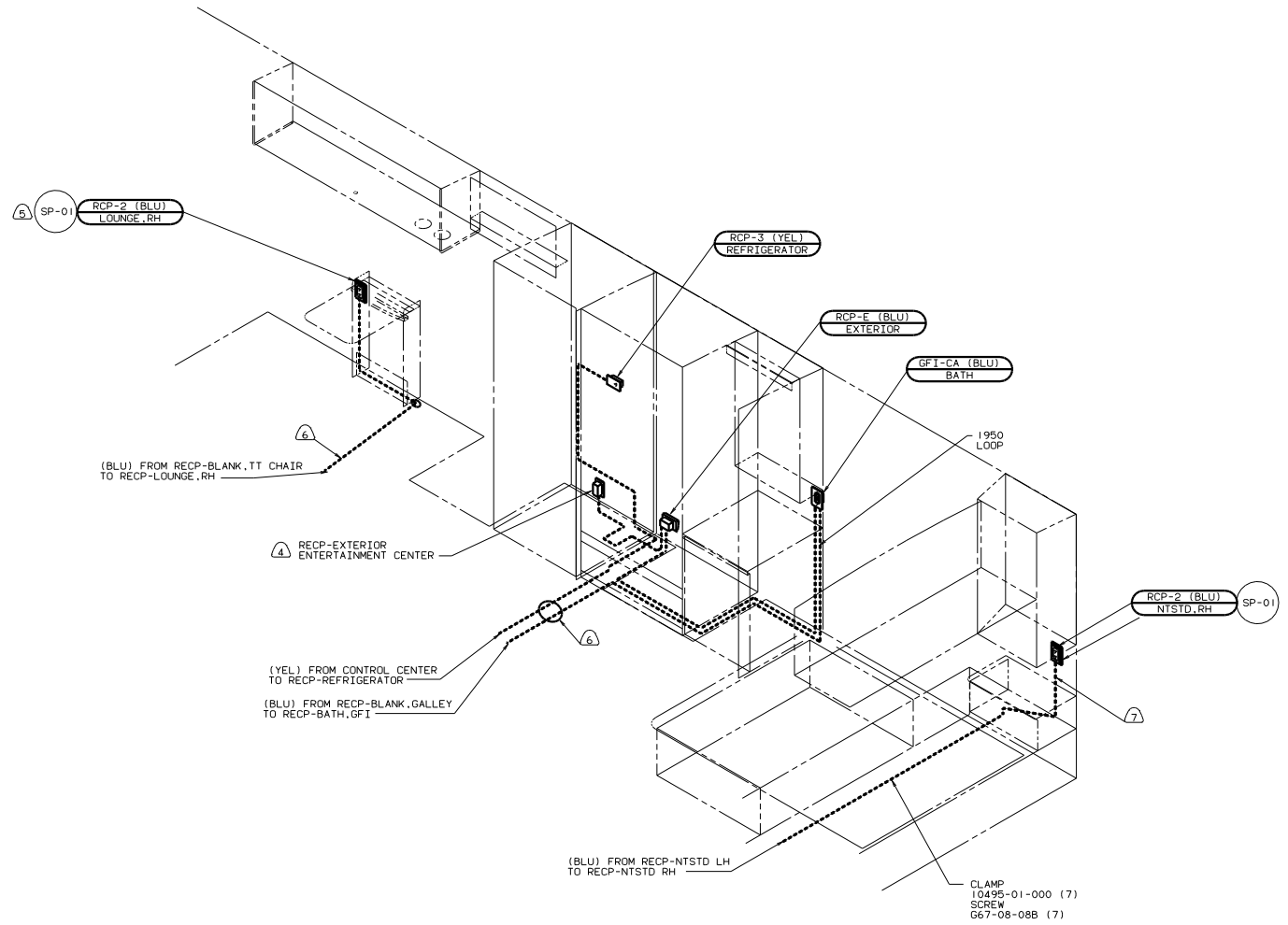
FOR ELECTRICAL TORQUE SPECIFICATIONS SEE DWG NO. 128783-01-000

X-X

FOR ELECTRICAL CALCULATIONS SEE DWG NO. 121339-01-000

99 F29A LEFT SIDE
265 CODE STANDARDS-CSA
12D ELECTRICAL SYS-30 AMP

WIRING INSTL-BODY(110130CAN)	
DWG NO	129555
SHEET	4 of 11



49X BED-QUEEN CENTERED

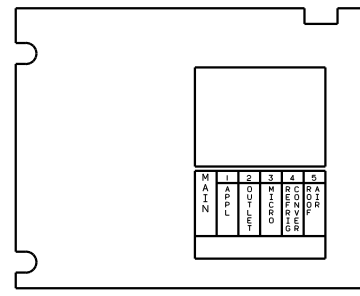
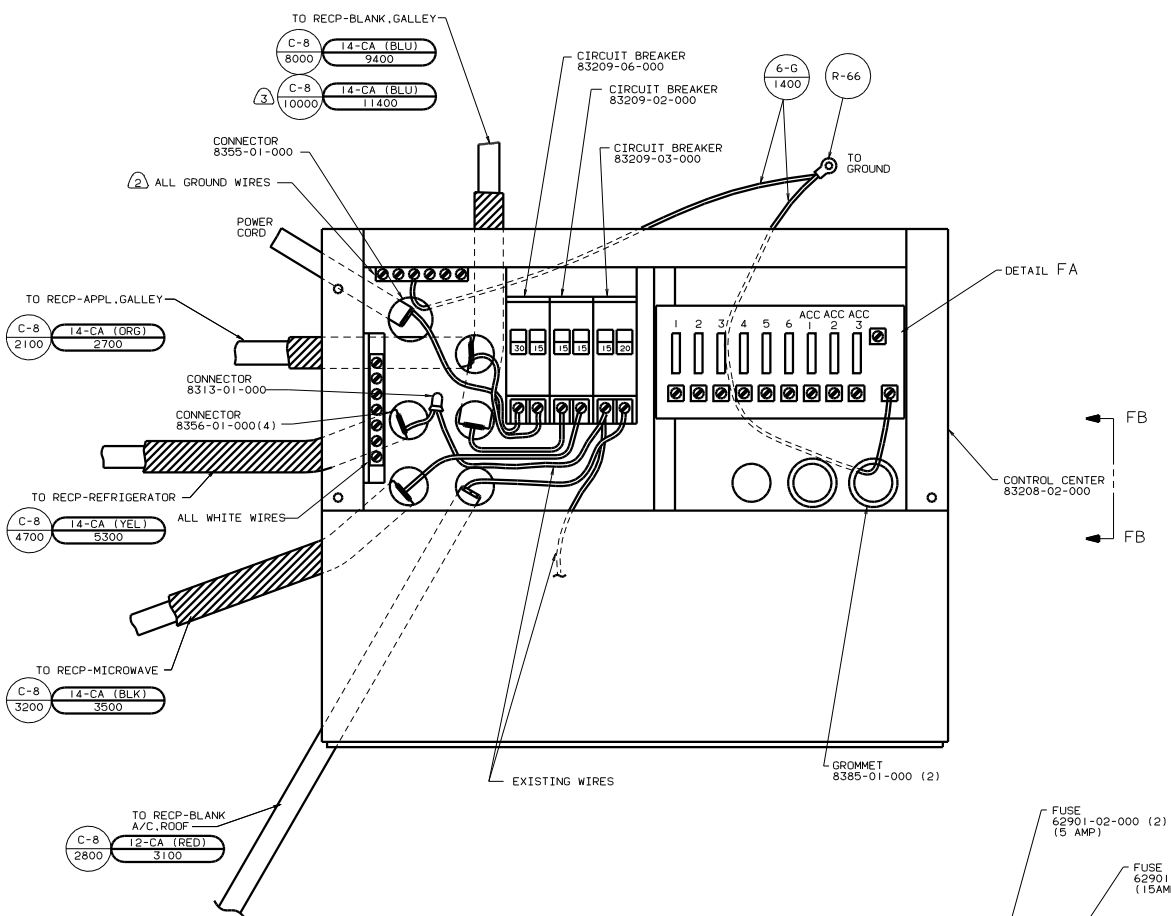
- 1. ALL WIRE TO BE CLAMPED WITH CLAMP 10495-01-000 OR CLIP 80734-02-000 EVERY 600 USE SCREW G67-10-12B UNLESS OTHERWISE SPECIFIED.
- 2. ALL WIRES ARE TO BE CLAMPED WITH CLAMP 10497-05-000 WITHIN 200 OF OUTLET BOXES AND SPLICES USE SCREW G67-10-12B.
- 3. ALL GROUND WIRES TO BE COVERED WITH TUBING 8041-02-000.
- 4. 76C ENTERTAINMENT CENTER-EXTERIOR.
- 5. 14F LGE CHAIRS-2 W/TABLE
- 6. WIRE ROUTED THROUGH FLOOR.
- 7. WIRE ROUTED THROUGH SIDEWALL.

FOR ELECTRICAL TORQUE SPECIFICATIONS SEE DWG NO. 128783-01-000

FOR ELECTRICAL CALLOUTS SEE DWG NO. 121339-01-000

99 F29A
265 CODE STANDARDS-CSA
12D ELECTRICAL SYS-30 AMP

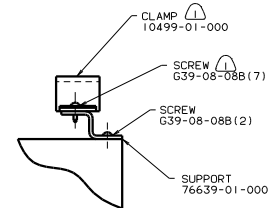
WIRING INSTL-BODY(LI0R30CAN)
SHEET 5 OF 11



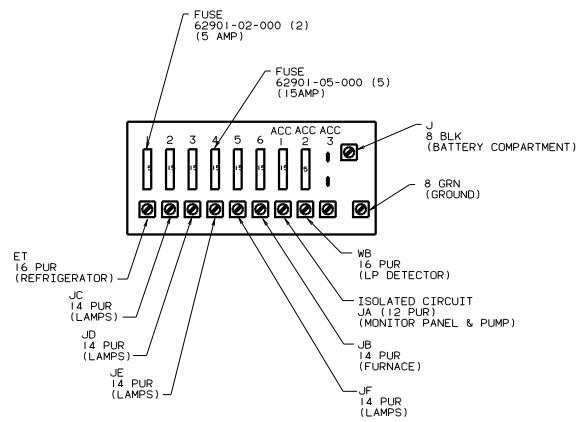
PANEL-COVER

FB
FB

DETAIL FA
CONTROL CENTER 83208-02-000



VIEW FB-FB



DETAIL FA

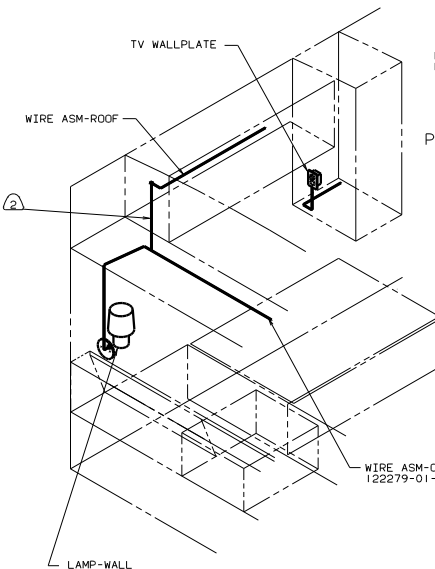
- NOTES:
- 3 76C ENTERTAINMENT CENTER-EXTERIOR.
 - 2 ALL GROUND WIRES TO BE COVERED WITH TUBING 8041-02-000.
 - 1 FASTEN ALL WIRES TO SUPPORT, USE WITH ONE SCREW PER CLAMP.

FOR ELECTRICAL TORQUE SPECIFICATIONS SEE DWG NO. 128783-01-000

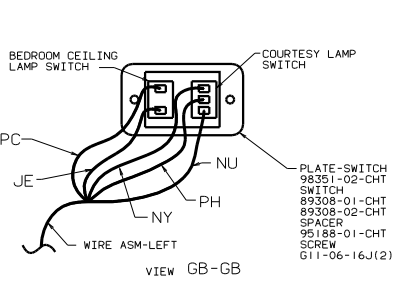
FOR ELECTRICAL CALLOUTS SEE DWG NO. 121339-01-000

99 F29A
 CONTROL CENTER
 265 CODE STANDARDS-CSA
 12D ELECTRICAL SYS-30 AMP

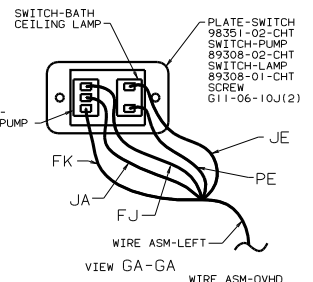
WIRING INSTL-BODY(110 CC CAN)
 SHEET 6 OF 11
 129555



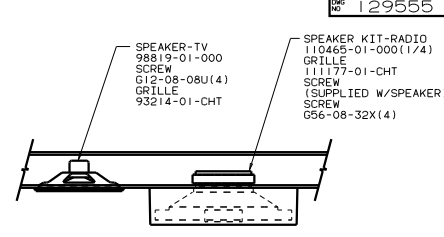
45G BED-TWINS



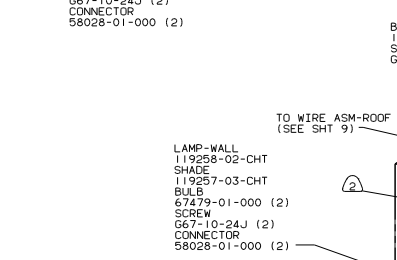
VIEW GB-GB



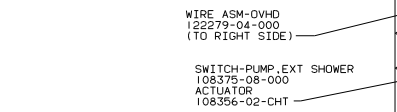
VIEW GA-GA



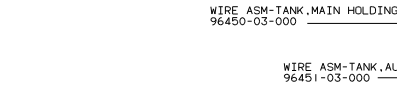
VIEW GD-GD



LAMP-WALL 119258-02-CHT



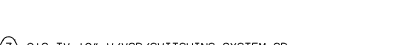
SWITCH-PUMP, EXT SHOWER ACTUATOR 108375-08-000



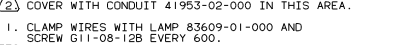
WIRE ASM-TANK, MAIN HOLDING 96450-03-000



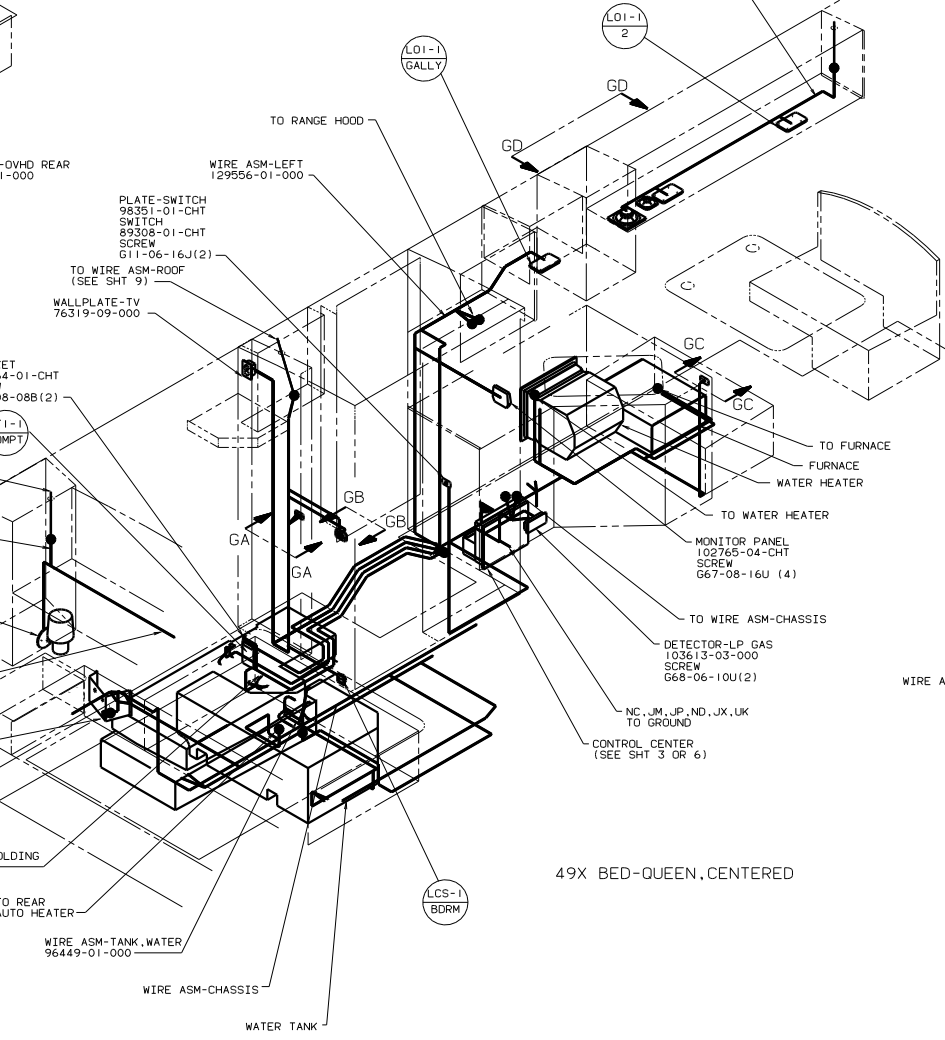
WIRE ASM-TANK, AUX HOLDING 96451-03-000



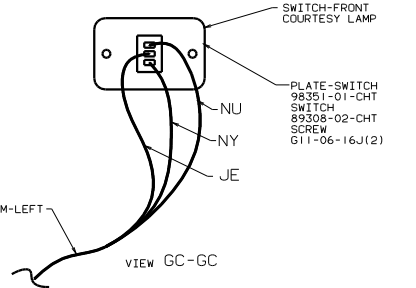
WIRE ASM-TANK, WATER 96449-01-000



WIRE ASM-CHASSIS



49X BED-QUEEN, CENTERED



VIEW GC-GC

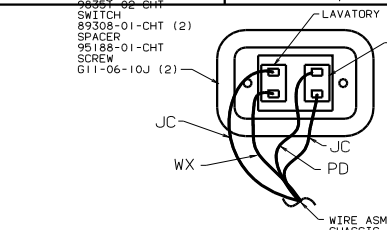
- ③ 210 TV-19" W/VCR/SWITCHING SYSTEM OR 42T TV-19" FRT & SW/SYS
- ② COVER WITH CONDUIT 41953-02-000 IN THIS AREA.
- 1. CLAMP WIRES WITH LAMP 83609-01-000 AND SCREW G11-08-12B EVERY 600.

FOR ELECTRICAL TORQUE SPECIFICATIONS SEE DWG NO. 128783-01-000

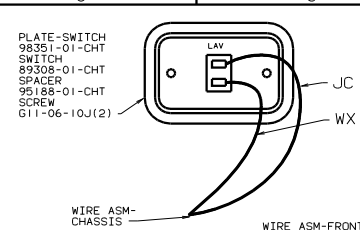
X-X FOR ELECTRICAL CALLOUTS SEE DWG NO. 121339-01-000

99 F29A
12V LEFT SIDE
181 CODE STANDARDS-USA
265 CODE STANDARDS-CSA

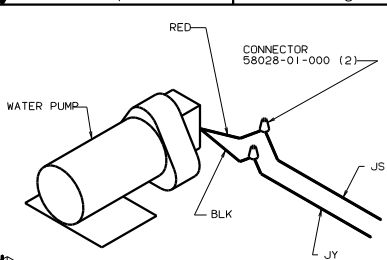
TITLE: WIRING INSTL-BODY(12 L)
SHEET 7 OF 11
129555



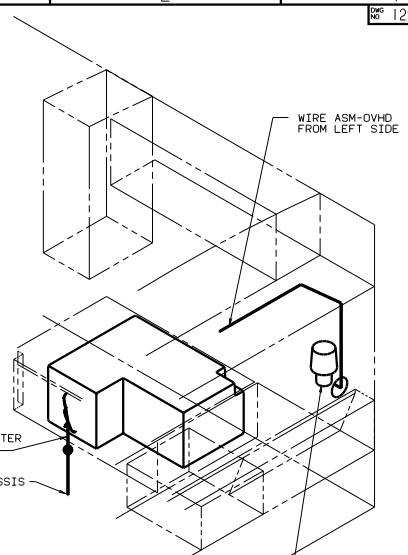
DETAIL HB



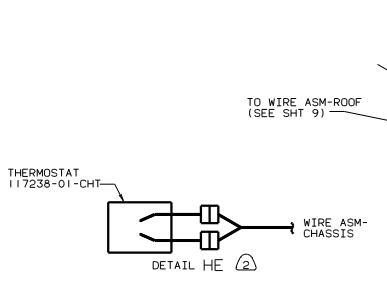
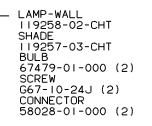
DETAIL HB



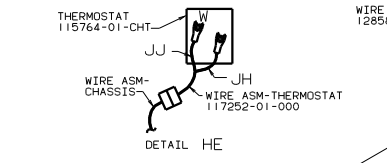
DETAIL HD



45G BED-TWINS



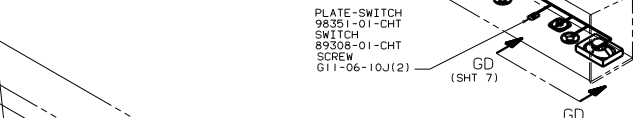
TO WIRE ASM-ROOF (SEE SHT 9)



WIRE ASM-OVHD
128589-01-000

LO1-1
2

HALO-S
3



38R COMFORT AND CONVENIENCE PACKAGE

GD (SHT 7)

TO PORCH LAMP
WIRE ASM-PORCH LAMP

ET, EU TO REFRIGERATOR

LMU3

TO WIRE ASM-ROOF (SEE SHT 9)

THERMOSTAT (SEE DETAIL HE)
SCREW
G13-07-12B (2)



VIEW HA-HA

WIRE ASM-CHASSIS

HA
HB
HC

LCR1

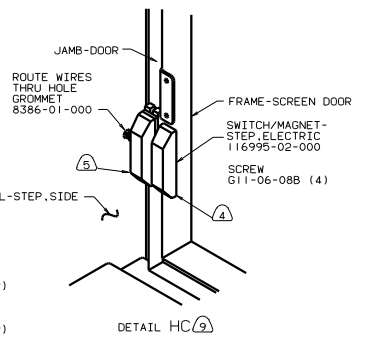
LCR1

ENTERTAINMENT CENTER COMPL
127427-01-000
127427-02-000

WATER PUMP (SEE DETAIL HD)

LAMP-WALL
119258-02-CHT
SHADE
119257-03-CHT
BULB
67479-01-000 (2)
SCREW
G67-10-24J (2)
CONNECTOR
58028-01-000 (2)

WIRE ASM-OVHD FROM LEFT SIDE



- 9) 1E2 ENTRANCE STEP-ELECTRIC
- 8) 38R COMFORT & CONV PKG
- 7) 1D5 ENTERTAINMENT CTR-EXT. W/CD PLAYER
- 6) 76C ENTERTAINMENT CTR-EXT. W/CASSETTE
- 5) MOUNT SWITCH AND SPACER TO BLOCK ON JAMB. ADJUST HEIGHT TO MATCH MAGNET.
- 4) MOUNT MAGNET USING PILOT HOLES IN SCREEN DOOR FRAME. MOUNT WITH MAGNET TOWARD SWITCH.
- 3) WIRE IN SIDEWALL
- 2) 250 A/C, ROOF-ONE, 14, 800.

1. CLAMP WIRES WITH CLAMP 83609-01-000 AND SCREW G11-08-12B EVERY 600.

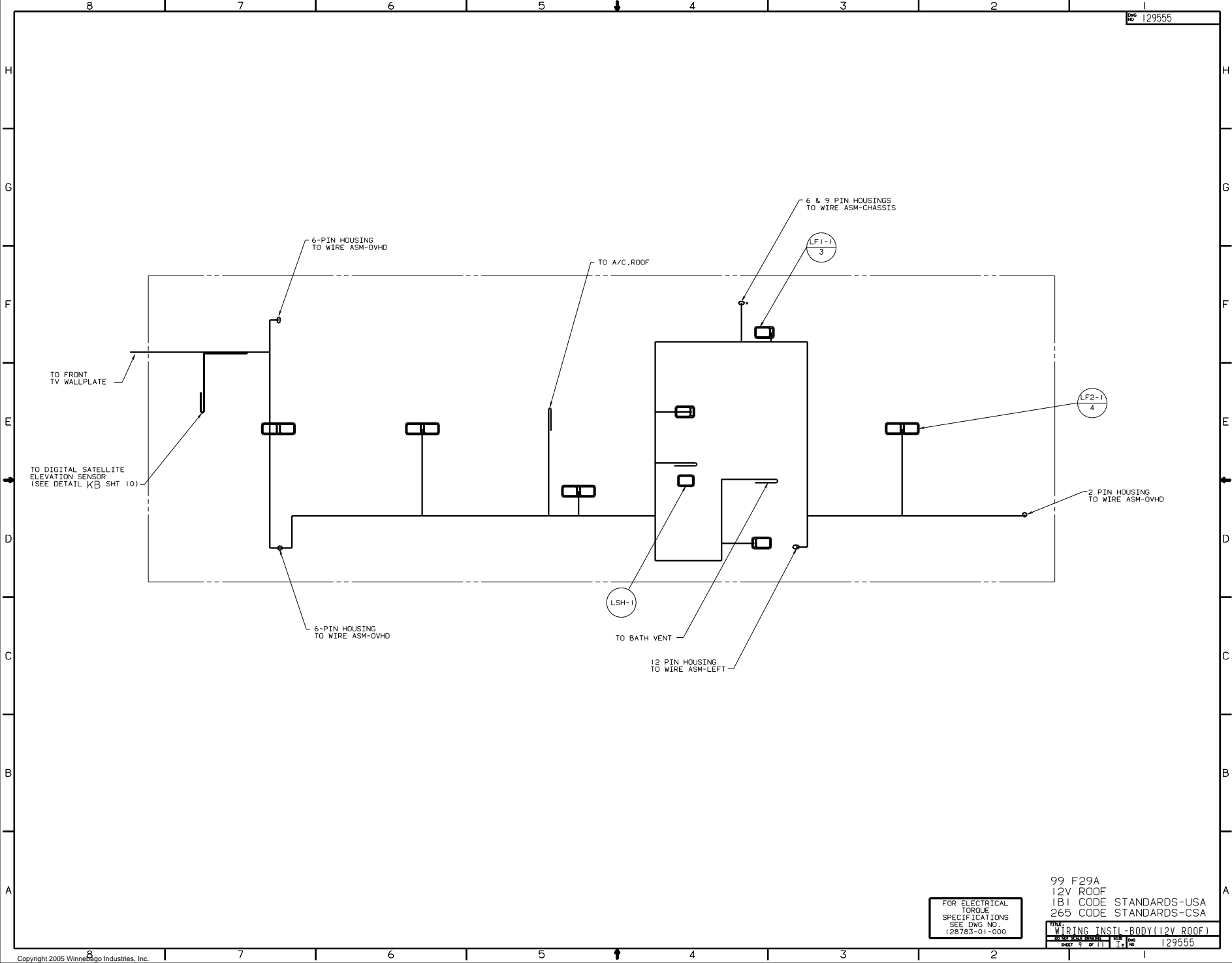
49X BED-QUEEN, CENTERED

FOR ELECTRICAL TORQUE SPECIFICATIONS SEE DWG NO. 128783-01-000

FOR ELECTRICAL CALLOUTS SEE DWG NO. 121359-01-000

99 F29A
12V RIGHT SIDE
1B1 CODE STANDARDS-USA
265 CODE STANDARDS-CSA

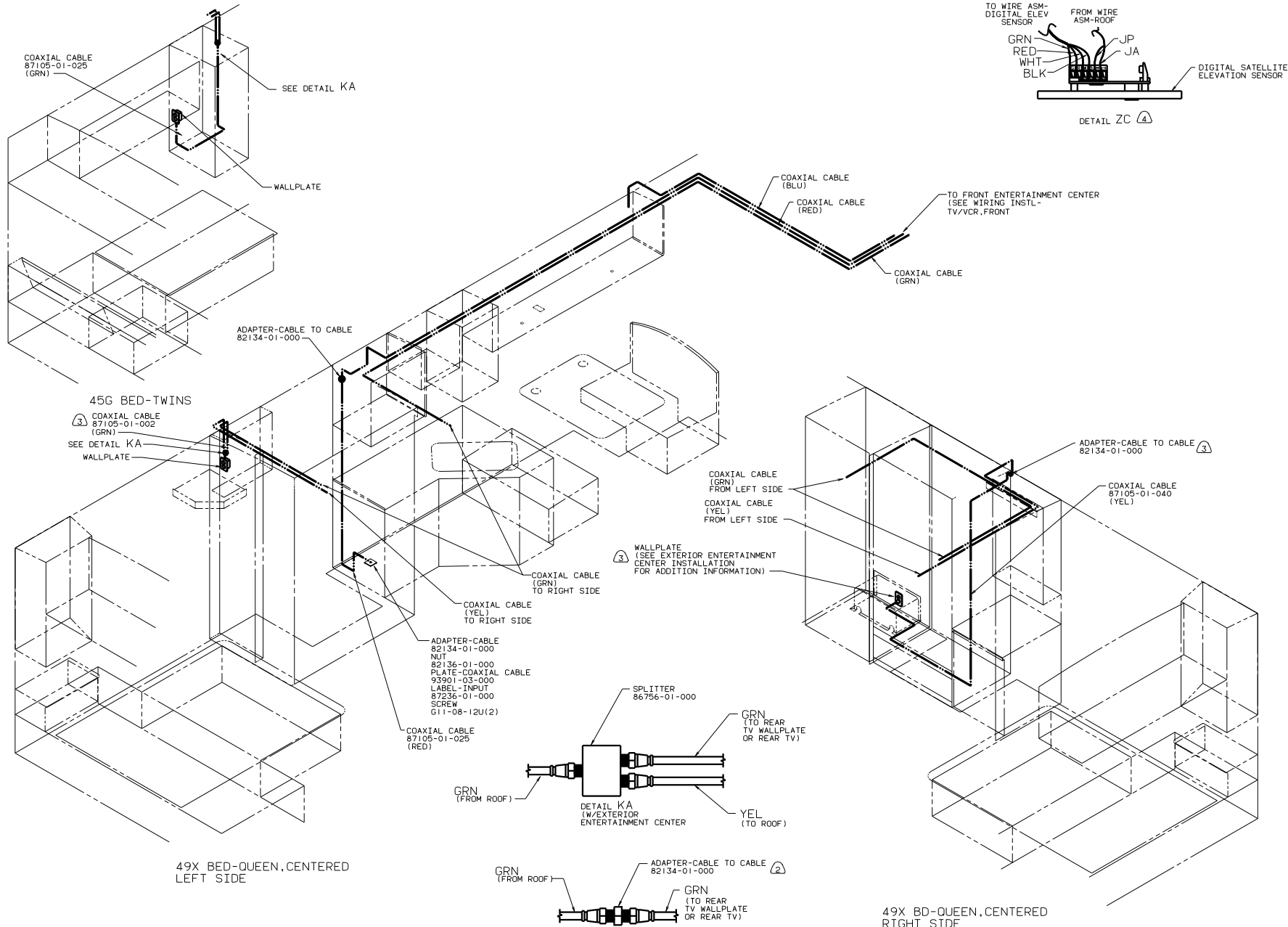
TITLE: WIRING INSTL-BODY(12_R)
30 DAY SALE DEDUCTIBLE
SHEET 8 OF 11
129555



FOR ELECTRICAL
TORQUE
SPECIFICATIONS
SEE DWG NO.
128783-01-000

99 F29A
12V ROOF
IB1 CODE STANDARDS-USA
265 CODE STANDARDS-CSA

WIRING INSTL-BODY(12V ROOF)
SHEET 3 OF 11

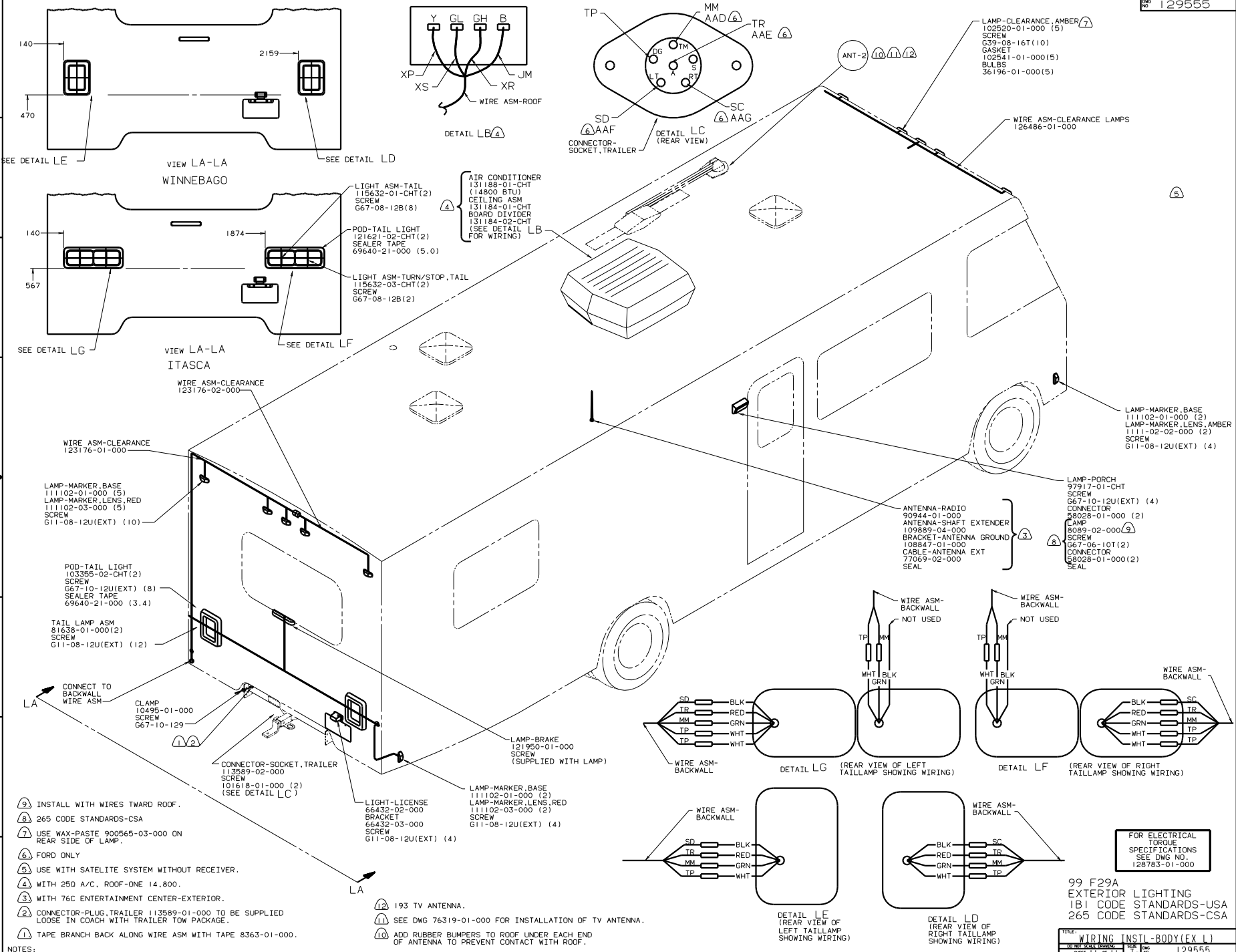


- ④ 480 SATELLITE DISH.
- ③ WITH 76C ENTERTAINMENT CENTER-EXTERIOR.
- ② WITH 45G BED-TWINS ONLY. WITH 49X BED-QUEEN, CENTERED CABLE FROM ROOF CONNECTS DIRECTLY TO WALLPLATE.

1. CLAMP CABLES WITH CLAMP 83609-01-000 AND SCREW G11-08-12B EVERY 600.

FOR ELECTRICAL TORQUE SPECIFICATIONS SEE DWG NO. 128783-01-000

99 F29A	
COAXIAL CABLE	
IB1 CODE STANDARDS-USA	
265 CODE STANDARDS-CSA	
TITLE	WIRING INSTL-BODY(COAX)
DATE	11/06
SHEET NO.	1
TOTAL SHEETS	1
129555	



AIR CONDITIONER
 131188-01-CHT
 (14800 BTU)
 CEILING ASM
 131184-01-CHT
 BOARD DIVIDER
 131184-02-CHT
 (SEE DETAIL LB
 FOR WIRING)

LAMP-CLEARANCE, AMBER (7)
 102520-01-000 (5)
 SCREW
 G39-08-16T(10)
 GASKET
 102541-01-000(5)
 BULBS
 36196-01-000(5)

LAMP-MARKER, BASE
 111102-01-000 (2)
 LAMP-MARKER, LENS, AMBER
 1111-02-02-000 (2)
 SCREW
 G11-08-12U(EXT) (4)

ANTENNA-RADIO
 90944-01-000
 ANTENNA-SHAFT EXTENDER
 109889-04-000
 BRACKET-ANTENNA GROUND
 108847-01-000
 CABLE-ANTENNA EXT
 77069-02-000
 SEAL

LAMP-PORCH
 97917-01-CHT
 SCREW
 G67-10-12U(EXT) (4)
 CONNECTOR
 S8028-01-000 (2)
 LAMP
 S089-02-000 (2)
 SCREW
 G67-06-10T(2)
 CONNECTOR
 S8028-01-000(2)
 SEAL

LAMP-MARKER, BASE
 111102-01-000 (5)
 LAMP-MARKER, LENS, RED
 111102-03-000 (5)
 SCREW
 G11-08-12U(EXT) (10)

POD-TAIL LIGHT
 103395-02-CHT(2)
 SCREW
 G67-10-12U(EXT) (8)
 SEALER TAPE
 69640-21-000 (3.4)

TAIL LAMP ASM
 S1638-01-000(2)
 SCREW
 G11-08-12U(EXT) (12)

CLAMP
 10495-01-000
 SCREW
 G67-10-129

CONNECTOR-SOCKET, TRAILER
 113589-02-000
 SCREW
 101618-01-000 (2)
 (SEE DETAIL LC)

LIGHT-LICENSE
 66432-02-000
 BRACKET
 66432-03-000
 SCREW
 G11-08-12U(EXT) (4)

LAMP-MARKER, BASE
 111102-01-000 (2)
 LAMP-MARKER, LENS, RED
 111102-03-000 (2)
 SCREW
 G11-08-12U(EXT) (4)

LAMP-BRAKE
 121950-01-000
 SCREW
 (SUPPLIED WITH LAMP)

NOTES:
 (1) TAPE BRANCH BACK ALONG WIRE ASM WITH TAPE 8363-01-000.
 (2) CONNECTOR-PLUG, TRAILER 113589-01-000 TO BE SUPPLIED LOOSE IN COACH WITH TRAILER TO PACKAGE.
 (3) WITH 76C ENTERTAINMENT CENTER-EXTERIOR.
 (4) WITH 250 A/C, ROOF-ONE 14,800.
 (5) USE WITH SATELLITE SYSTEM WITHOUT RECEIVER.
 (6) FORD ONLY
 (7) USE WAX-PASTE 900565-03-000 ON REAR SIDE OF LAMP.
 (8) 265 CODE STANDARDS-CSA
 (9) INSTALL WITH WIRES TWARD ROOF.

(12) 193 TV ANTENNA.
 (11) SEE DWG 76319-01-000 FOR INSTALLATION OF TV ANTENNA.
 (10) ADD RUBBER BUMPERS TO ROOF UNDER EACH END OF ANTENNA TO PREVENT CONTACT WITH ROOF.

FOR ELECTRICAL
 TORQUE
 SPECIFICATIONS
 SEE DWG NO.
 128783-01-000

99 F29A
 EXTERIOR LIGHTING
 I81 CODE STANDARDS-USA
 265 CODE STANDARDS-CSA