



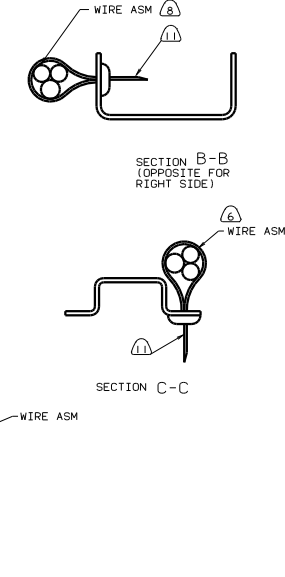
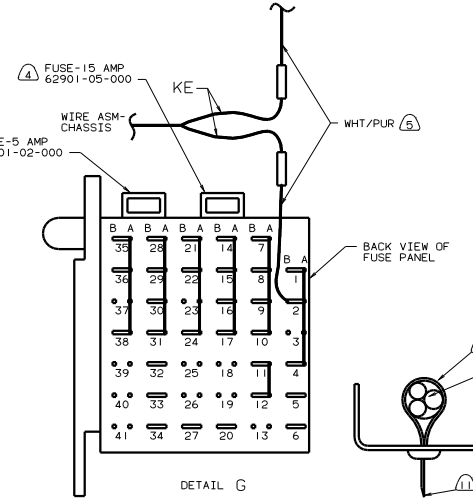
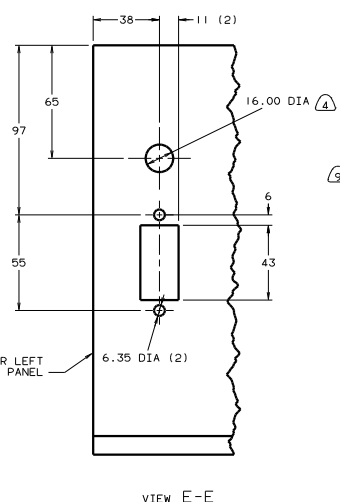
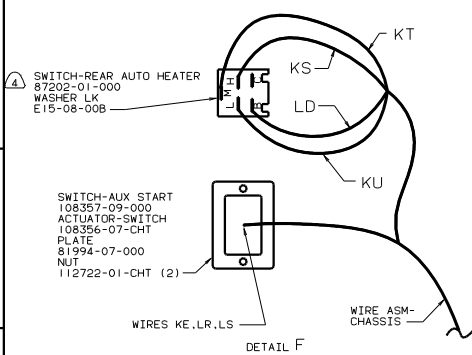
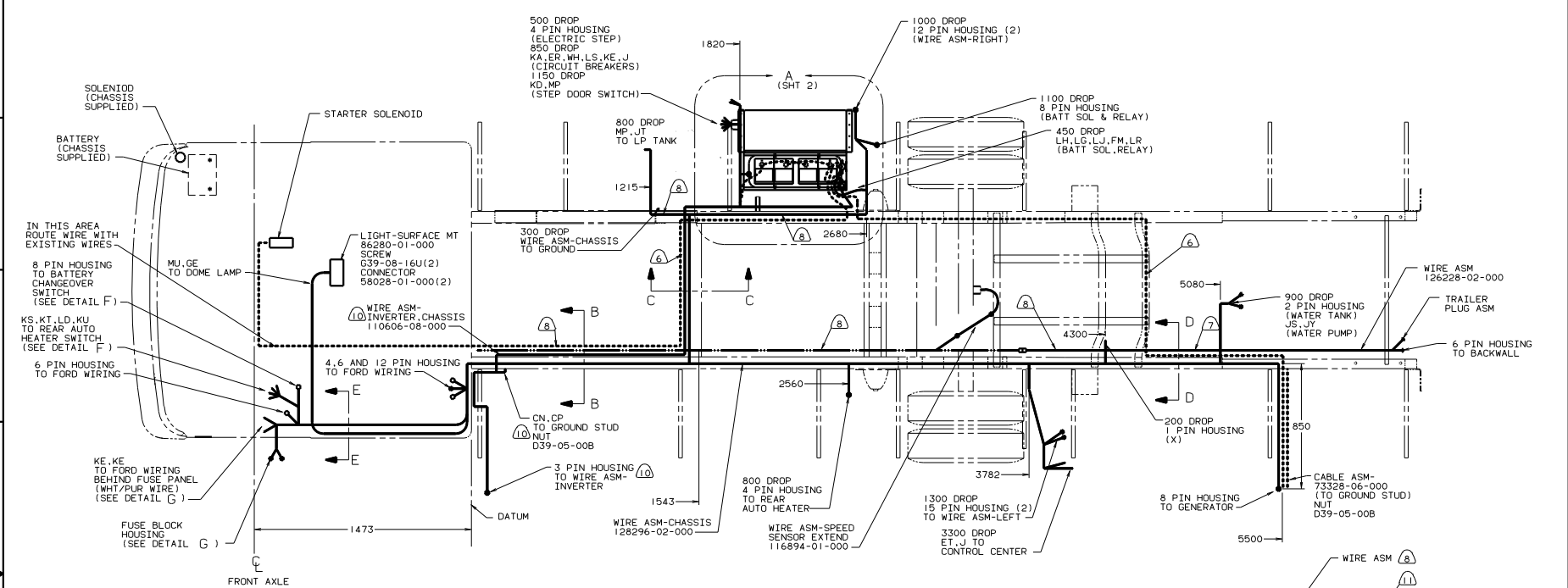
**DANGER**

**Danger of electrical shock, burns or death.** Always remove all power sources before attempting any repair, service or diagnostic work. Power can be present from shore power, generator, inverter or battery. All power sources must be disabled and secured before performing any service.



**CAUTION**

If you lack the skills, tools or equipment to perform diagnostic or repair work leave such work to an authorized Winnebago Industries dealer or other qualified shop.



- 11 CUT OFF EXCESS ENDS OF WIRE TIES.
- 10 40F INVERTER-DC/AC, 130W.
- 28X MIRRORS-EXTERIOR (WINNEBAGO). STANDARD ON ITASCA.
- WIRES TO BE TIED ON TOP OF RAIL USING EXISTING HOLES.
- WIRES TO BE TIED INSIDE RAIL USING EXISTING HOLES.
- WIRES TO BE TIED TO CROSS MEMBER USING EXISTING HOLES.
- CUT WIRE AND RECONNECT AS SHOWN.
- 611 RR AUTO HTR/MOTORAID.
3. USE WIRE TIES 8343-01-000 AND 116673-01-000 APPROXIMATELY 600MM ON CENTER UNLESS OTHERWISE SPECIFIED.
2. SECURE CONDUIT 41953-01-000 OVER ALL WIRE IN CONTACT WITH SHARP EDGES.
1. LEGEND: ●●● FORD WIRING — WINNEBAGO WIRING ————— CABLE.

FOR ELECTRICAL TORQUE SPECIFICATIONS SEE DWG NO. 128783-01-000

16D CHASSIS-FORD, GAS  
 52C CHASSIS-FORD, DIESEL

WINNEBAGO 99 429U

QTY IN	DATE	UNSPECIFIED TOLERANCES ARE:	MATERIAL
CHP	DATE	WHOLE OR 1/16	
RF	DATE	ONE PLACE (1/32)	
D/E	DATE	TWO PLACES (1/64)	
DATE	DATE	ANGLE	
DATE	DATE	THRU HOLES	
DATE	DATE	INDUS. WELD	
DATE	DATE	PRODUCER	

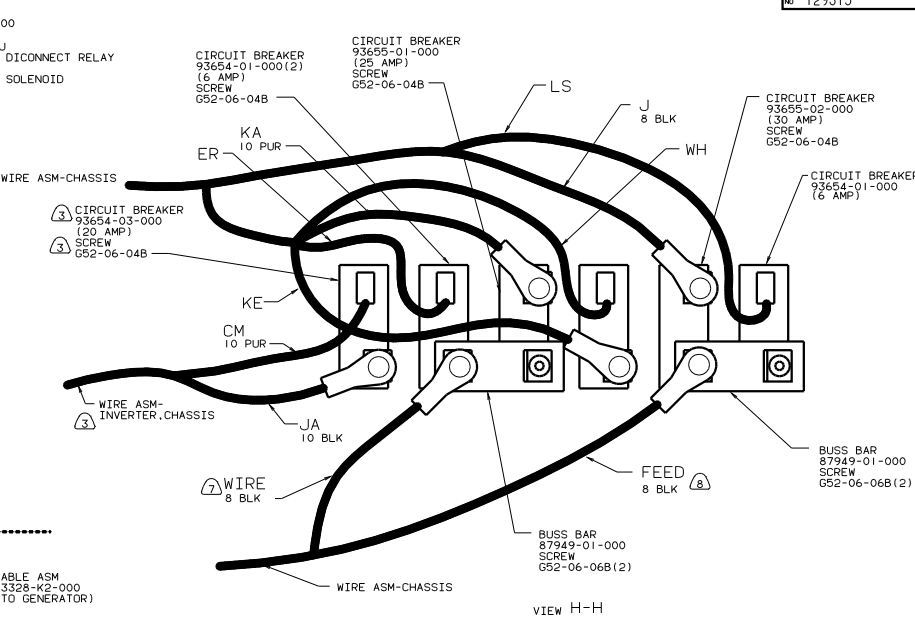
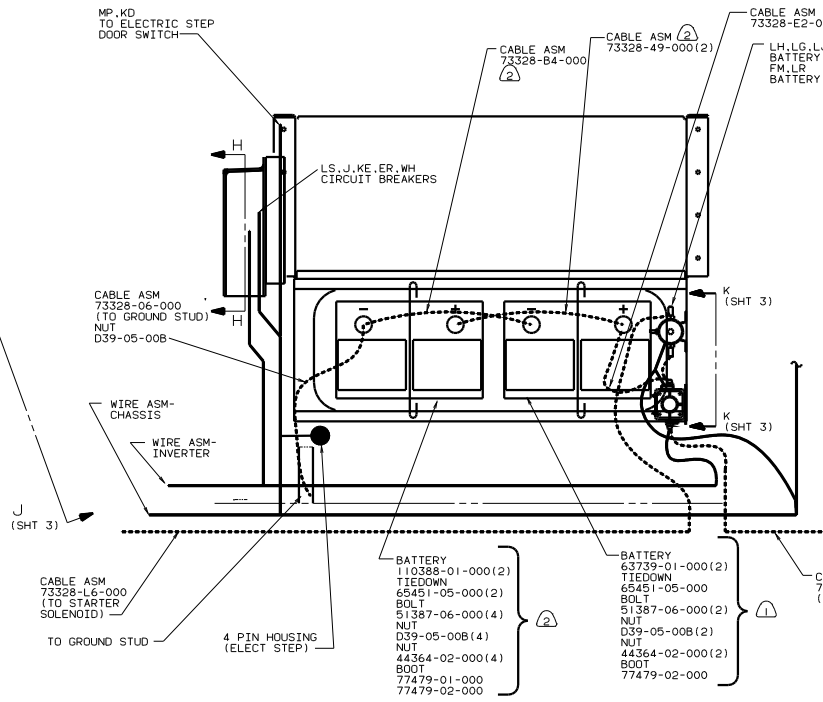
LANOT  
 DIA # SCALE: NONE  
 ALL DIMENSIONS ARE IN MILLIMETERS

TITLE: WIRING INSTL-CHASSIS

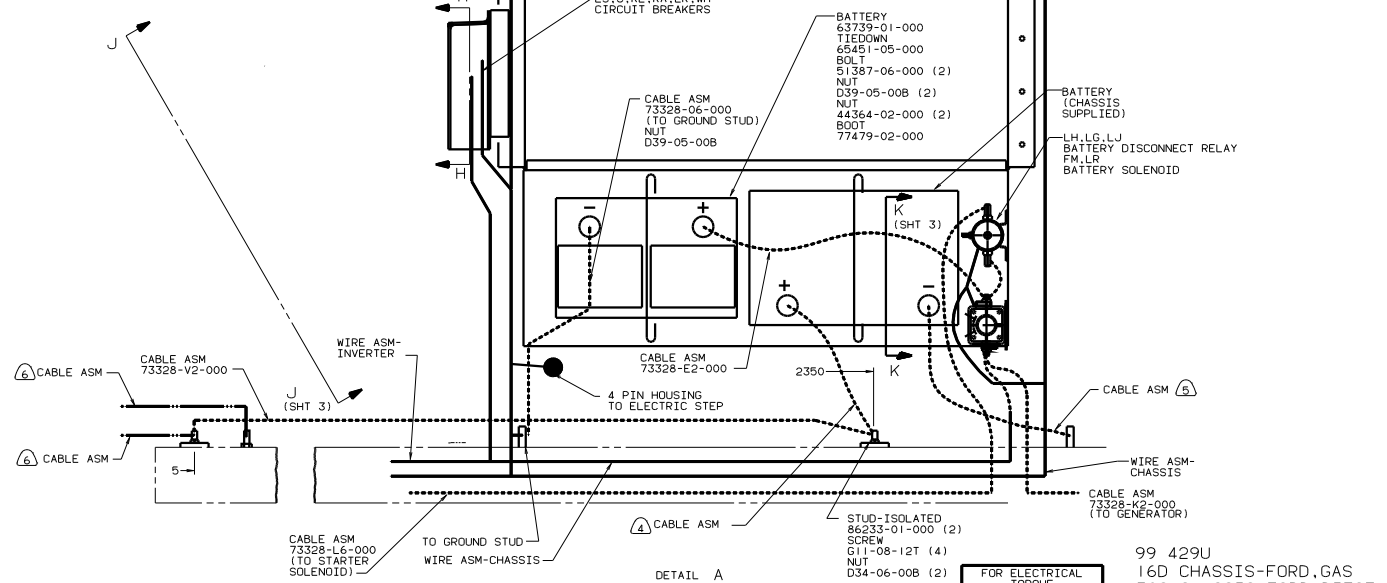
SHEET 1 OF 3

129315

REF: 128295-C



DETAIL A 16D CHASSIS-FORD, GAS



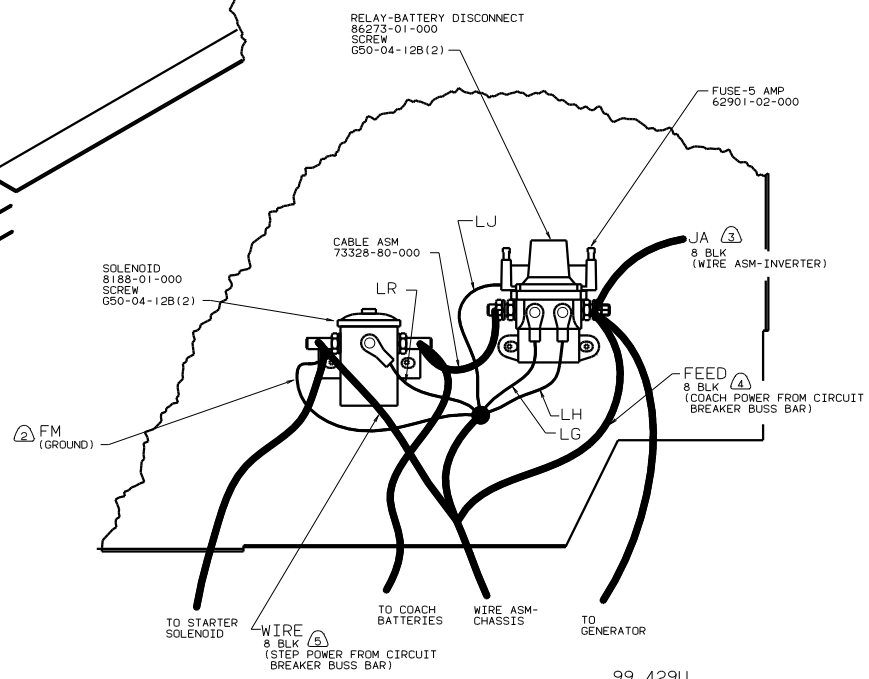
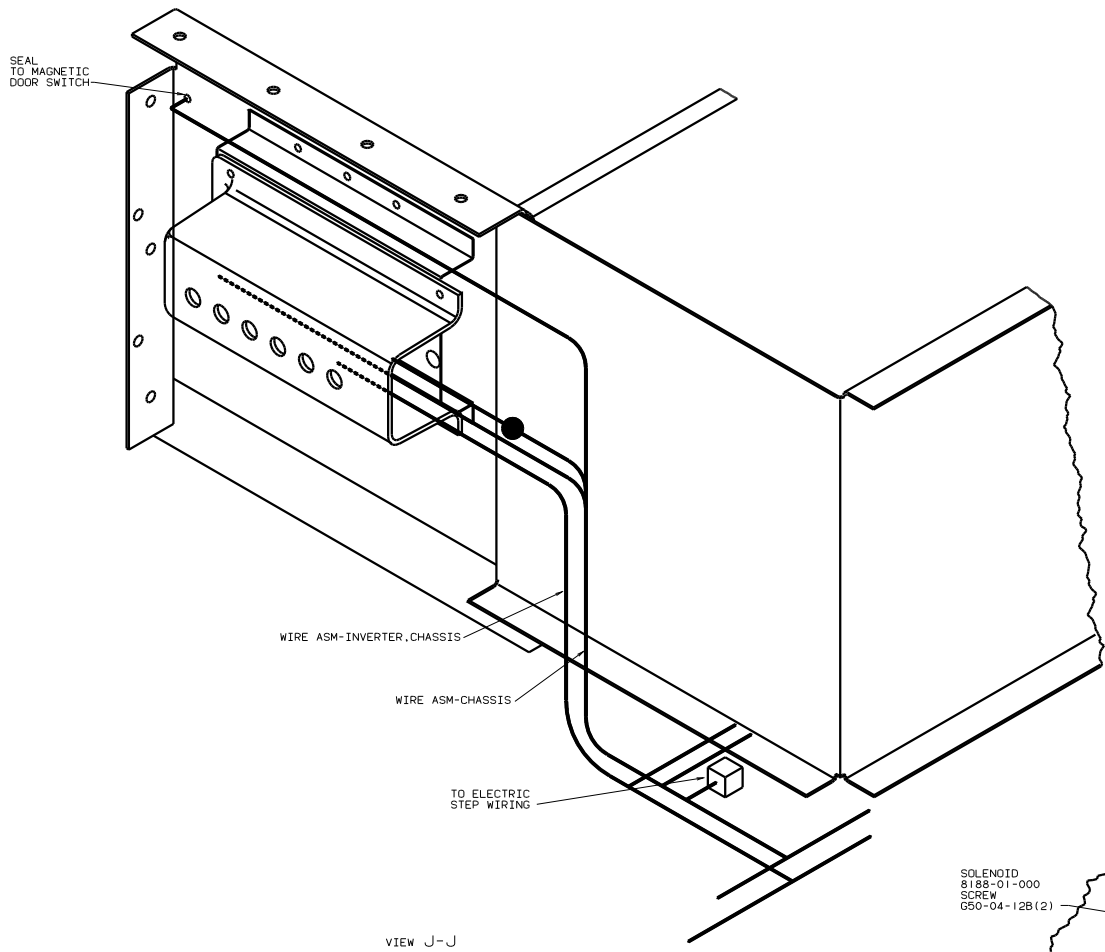
DETAIL A 52C CHASSIS-FORD, DIESEL

FOR ELECTRICAL TORQUE SPECIFICATIONS SEE DWG NO. 128783-01-000

99 429U  
16D CHASSIS-FORD, GAS  
52C CHASSIS-FORD, DIESEL

TITLE: WIRING INSTL-CHASSIS  
SHEET 2 OF 3

- ⑧ LEAD IS MARKED WITH RED TAPE.
- ⑦ LEAD IS MARKED WITH YELLOW TAPE.
- ⑥ ADD TERMINAL 8348-01-000.
- ⑤ TRIM CABLE TO 900, ADD TERMINAL 8348-01-000.
- ④ TRIM CABLE TO 600, ADD TERMINAL 8348-01-000.
- ③ 40F INVERTER-DC/AC, 130W.
- ② 22W BATTERY TWO.
- ① 12X BATTERY ONE.



- NOTES:
- (5) LEAD IS MARKED WITH YELLOW TAPE.
  - (4) LEAD IS MARKED WITH RED TAPE.
  - (3) 40F INVERTER-DC/AC, 130W.
  - (2) SECURE WITH SOLENOID MOUNTING SCREW.
  - (1) LOCATE BOX VERTICALLY BY CENTERING ON HOLE IN LOWER FLOOR.

FOR ELECTRICAL TORQUE SPECIFICATIONS SEE DWG NO. 128783-01-000

99 429U  
16D CHASSIS-FORD GAS  
52C CHASSIS-FORD DIESEL

TITLE	WIRING INSTL-CHASSIS
NO. OF SHEETS	3 OF 3
SHEET NO.	3
DATE	129315