



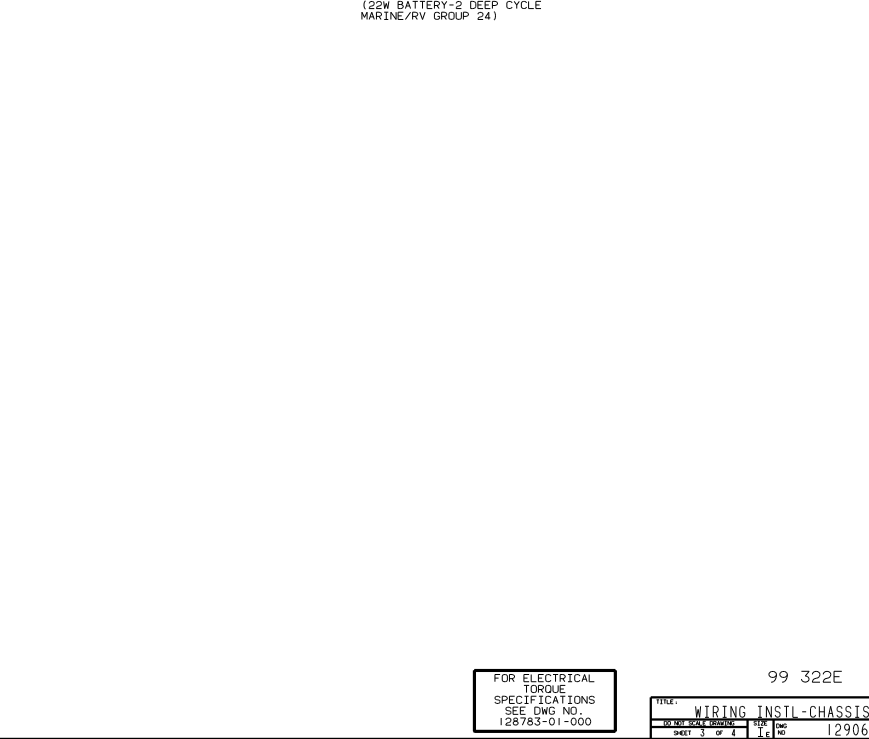
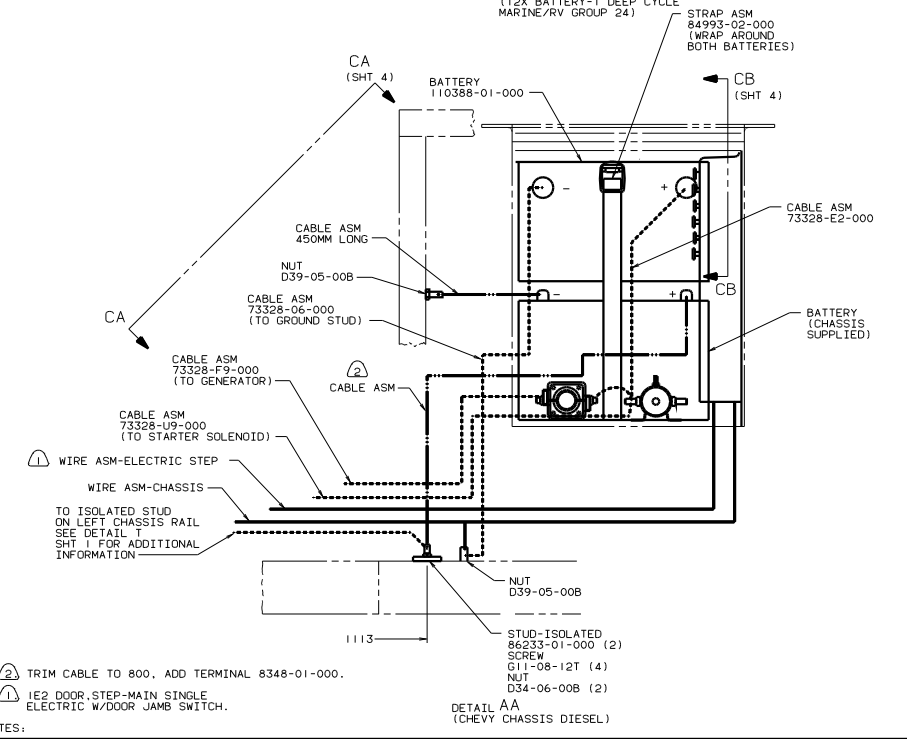
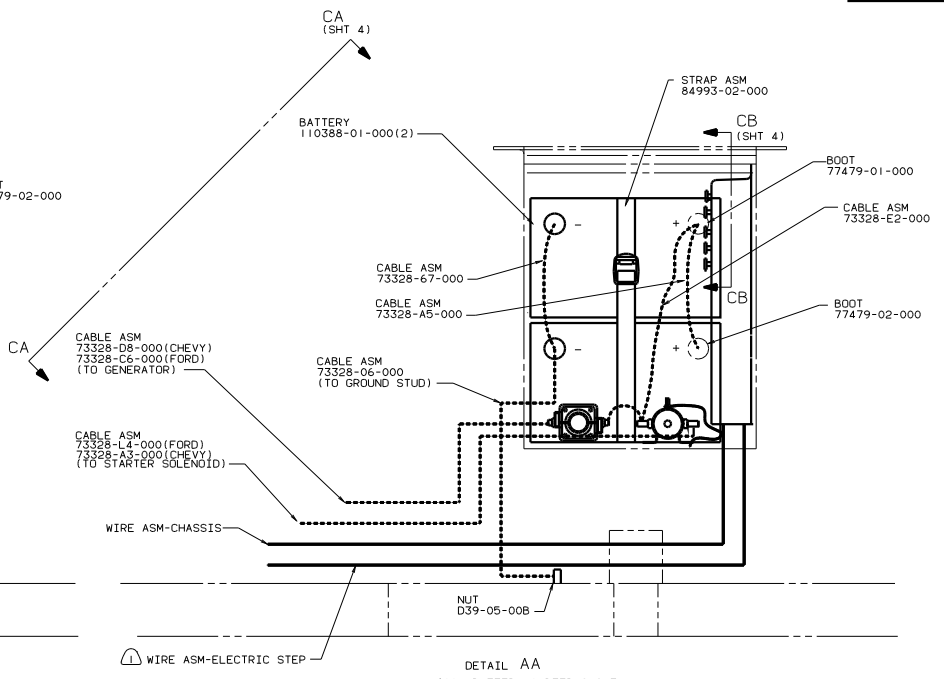
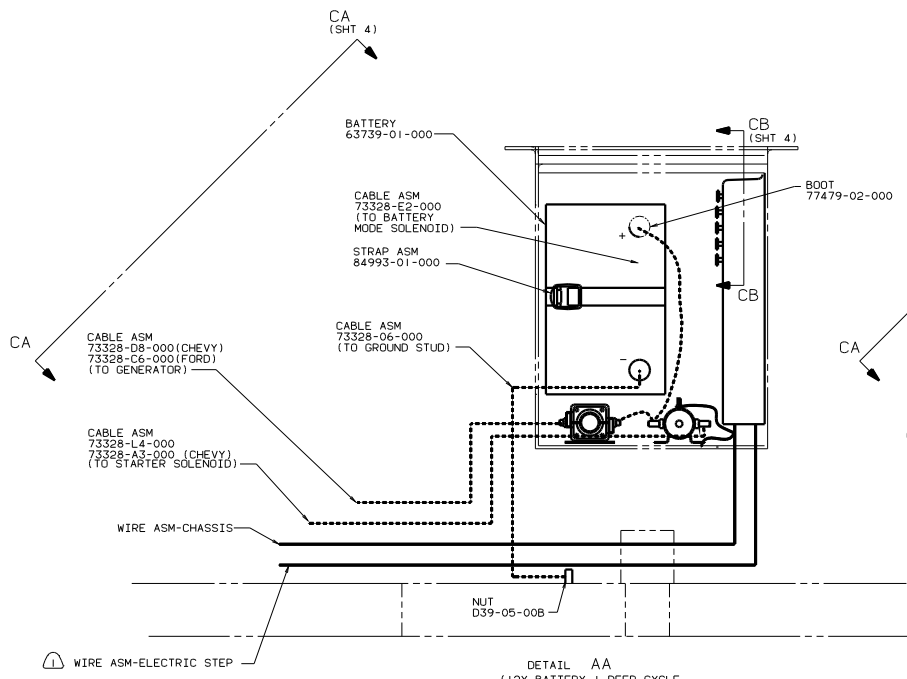
DANGER

Danger of electrical shock, burns or death. Always remove all power sources before attempting any repair, service or diagnostic work. Power can be present from shore power, generator, inverter or battery. All power sources must be disabled and secured before performing any service.



CAUTION

If you lack the skills, tools or equipment to perform diagnostic or repair work leave such work to an authorized Winnebago Industries dealer or other qualified shop.



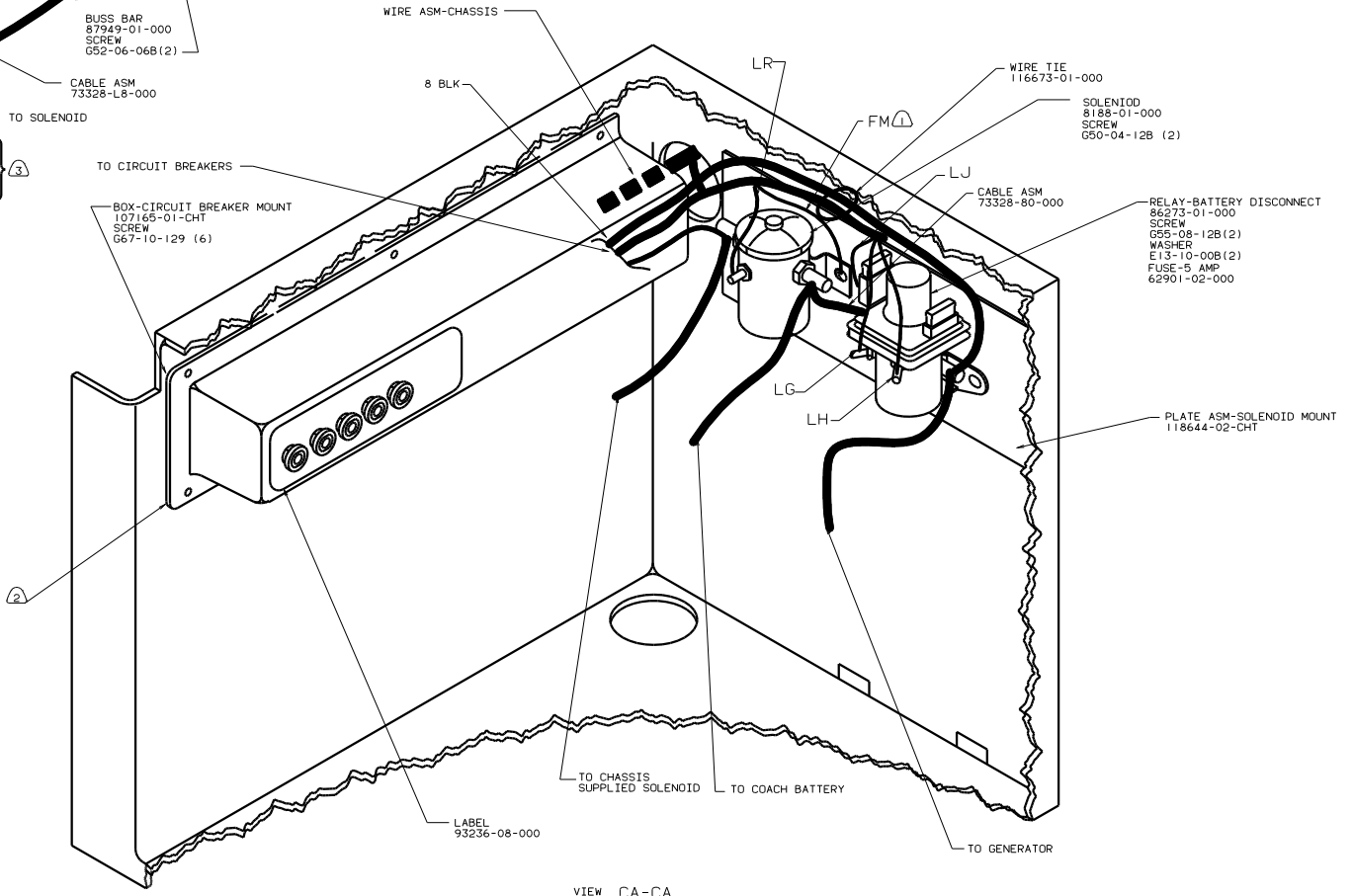
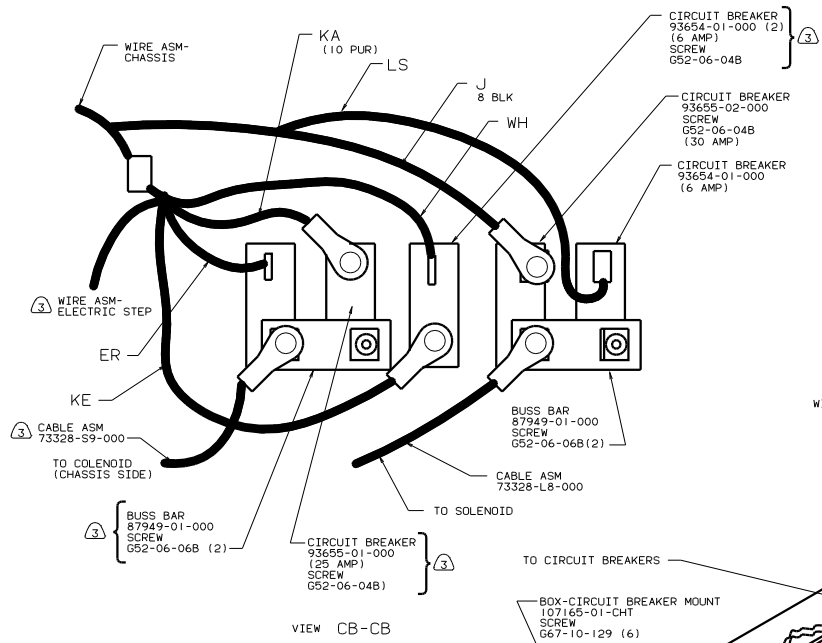
- 2 TRIM CABLE TO 800. ADD TERMINAL 8348-01-000.
- 1 IE2 DOOR STEP-MAIN SINGLE ELECTRIC W/DOOR JAMB SWITCH.

NOTES:

FOR ELECTRICAL TORQUE SPECIFICATIONS SEE DWG NO. 128783-01-000

99 322E

TITLE: WIRING INSTL-CHASSIS	
DO NOT SCALE DRAWING	REV. 1.0
SHEET 3 OF 4	DWG NO. 129063



- NOTES:
- ③ IE2 DOOR STEP-MAIN SINGLE ELECTRIC W/DOOR JAMB SWITCH.
 - ② LOCATE BOX HORIZONTALLY BY CENTERING ON HOLE IN REAR OF COMPARTMENT.
 - ① SECURE WITH SOLENOID MOUNTING BOLT.

FOR ELECTRICAL TORQUE SPECIFICATIONS SEE DWG NO. 128783-01-000

TITLE: WIRING INSTL-CHASSIS		99 322E	
DO NOT SCALE DRAWING	FIG. NO.	129063	
SHEET 4 OF 4	1 E		