



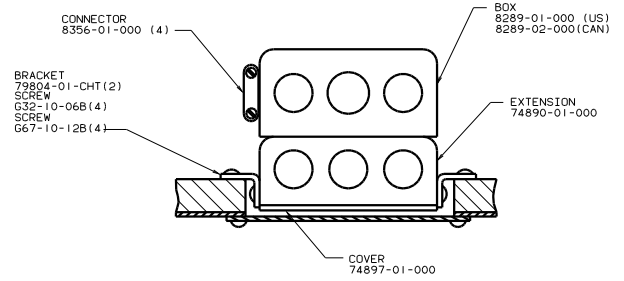
DANGER

Danger of electrical shock, burns or death. Always remove all power sources before attempting any repair, service or diagnostic work. Power can be present from shore power, generator, inverter or battery. All power sources must be disabled and secured before performing any service.

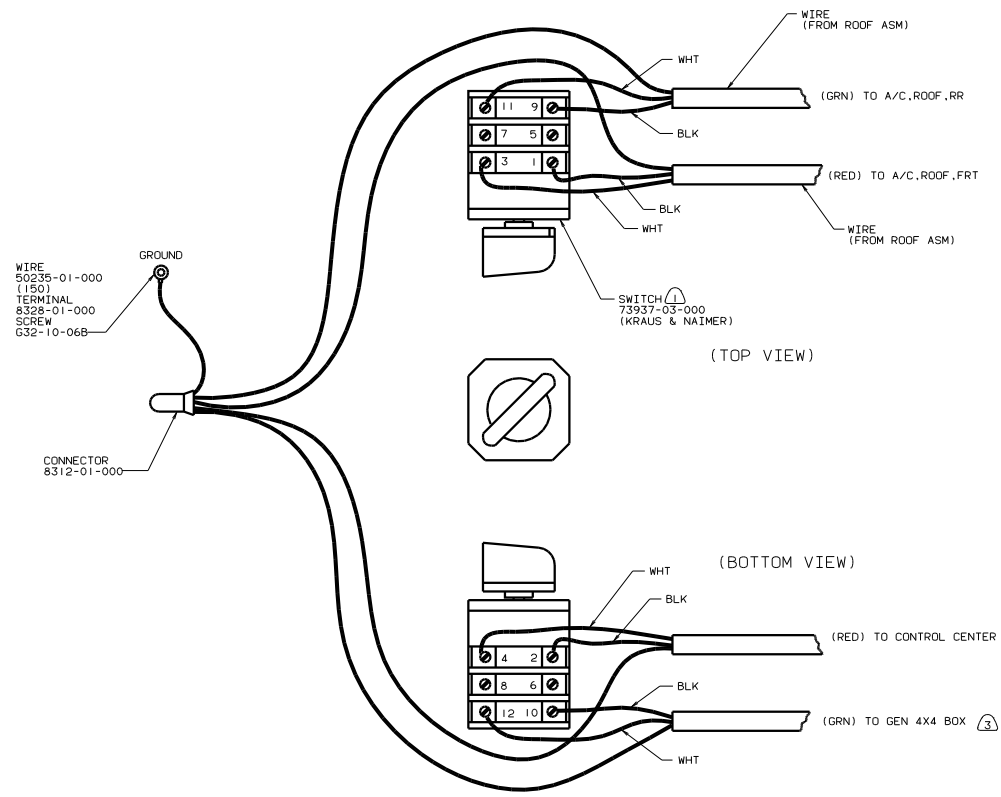
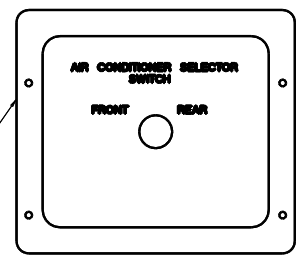
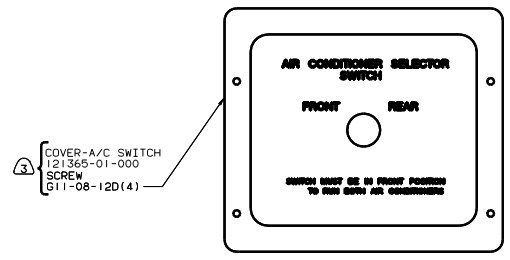


CAUTION

If you lack the skills, tools or equipment to perform diagnostic or repair work leave such work to an authorized Winnebago Industries dealer or other qualified shop.



TOP VIEW OF BOX



(TOP VIEW)

(BOTTOM VIEW)

- Ⓐ USE WITH 5000 WATT GENERATOR OF LARGER.
- 2. ALL GROUND WIRES TO BE COVERED WITH TUBING 8041-02-000.
- Ⓛ FASTEN SWITCH TO COVER 74897-01-000 BEFORE FASTENING COVER TO BOX.

FOR ELECTRICAL TORQUE SPECIFICATIONS SEE DWG NO. 128783-01-000

FOR ELECTRICAL CALLOUTS SEE DWG NO. 121339-01-000

99 F31B
DUAL AIR SWITCH
265 CODE STANDARDS-CSA
1B1 CODE STANDARDS-USA

WIRING INSTL - BODY (D A/C S)
SHEET 4 OF 12

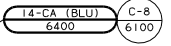
RECP-BLANK,OVHD,MICRO (BLU)

FROM RECP-GFI,BATH TO RECP-BLANK,OVHD,DINETTE OR RECP-COFFEE MAKER

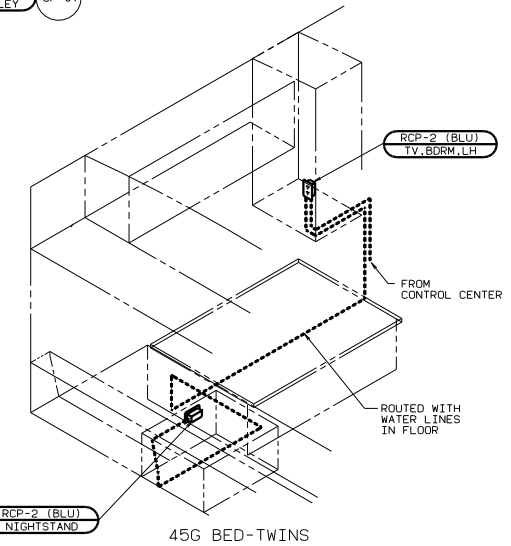
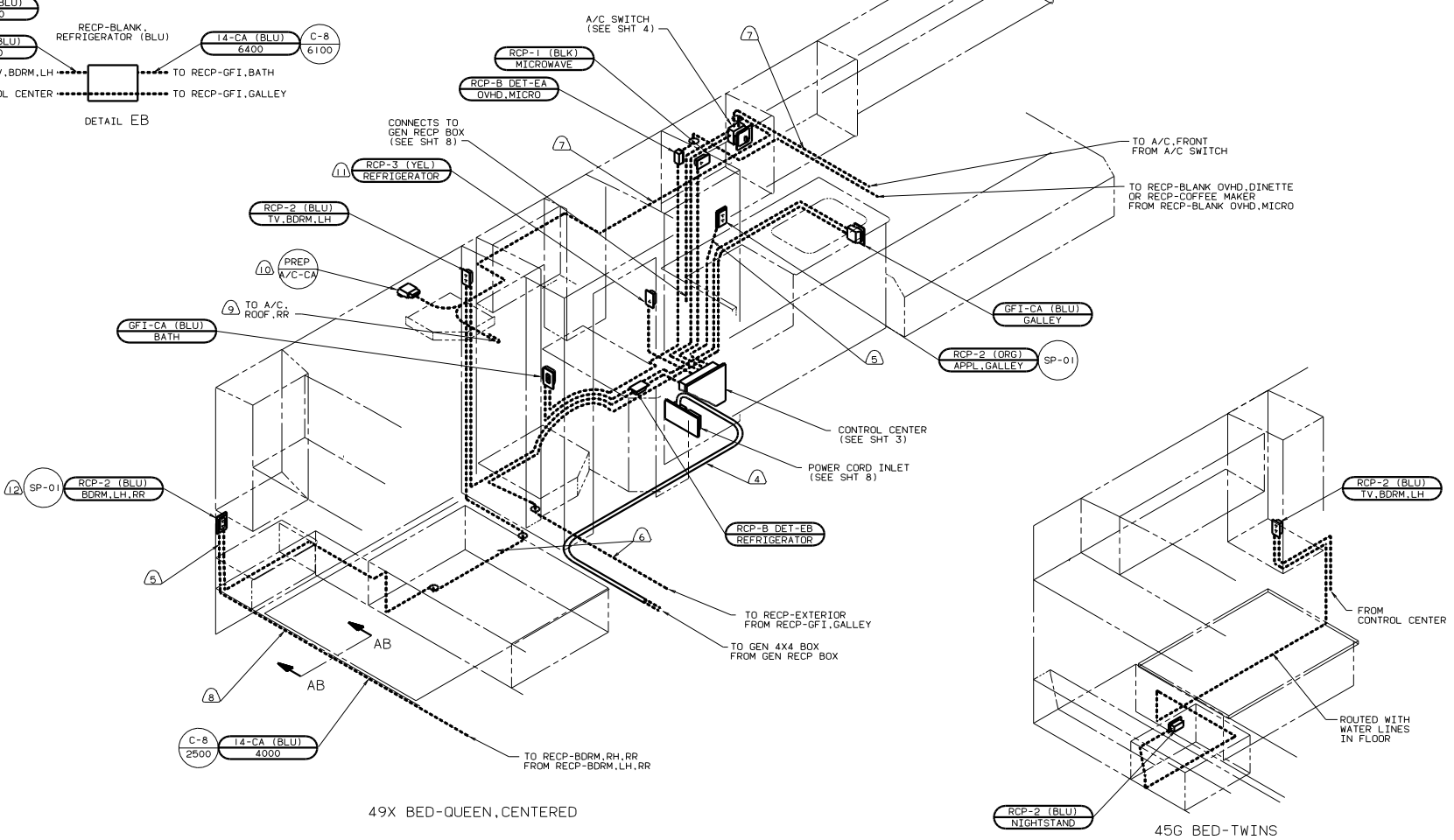
DETAIL EA



RECP-BLANK, REFRIGERATOR (BLU)



DETAIL EB



- 13 45G BED-TWINS
 - 12 49X BED-QUEEN
 - 11 LOCATE ON TIEDOWN PLATE.
 - 10 WITHOUT 29F A/C ROOF MOUNT - TWO 13500.
 - 9 29F A/C ROOF MOUNT - TWO 13500.
 - 8 ROUTE INSIDE COMPARTMENT ALONG BACKWALL, CLAMP AS REQUIRED.
 - 7 WIRE IN ROOF.
 - 6 WIRE ROUTED THRU FLOOR DURING INSTALLATION.
 - 5 WIRE ROUTED THRU SIDEWALL DURING INSTALLATION.
 - 4 ROUTED BELOW MAIN FLOOR, ATTACH TO FLOOR FRAME.
3. ALL GROUND WIRES TO BE COVERED WITH TUBING 8041-02-000.
2. ALL WIRES ARE TO BE CLAMPED WITH CLAMP 10497-05-000 WITHIN 200 OF OUTLET BOXES, USE SCREW G67-10-12B, UNLESS OTHERWISE NOTED.
1. ALL WIRE TO BE CLAMPED WITH CLAMP 10495-01-000 OR CLIP 80734-02-000 EVERY 600, USE SCREW G67-10-12B UNLESS OTHERWISE SPECIFIED.

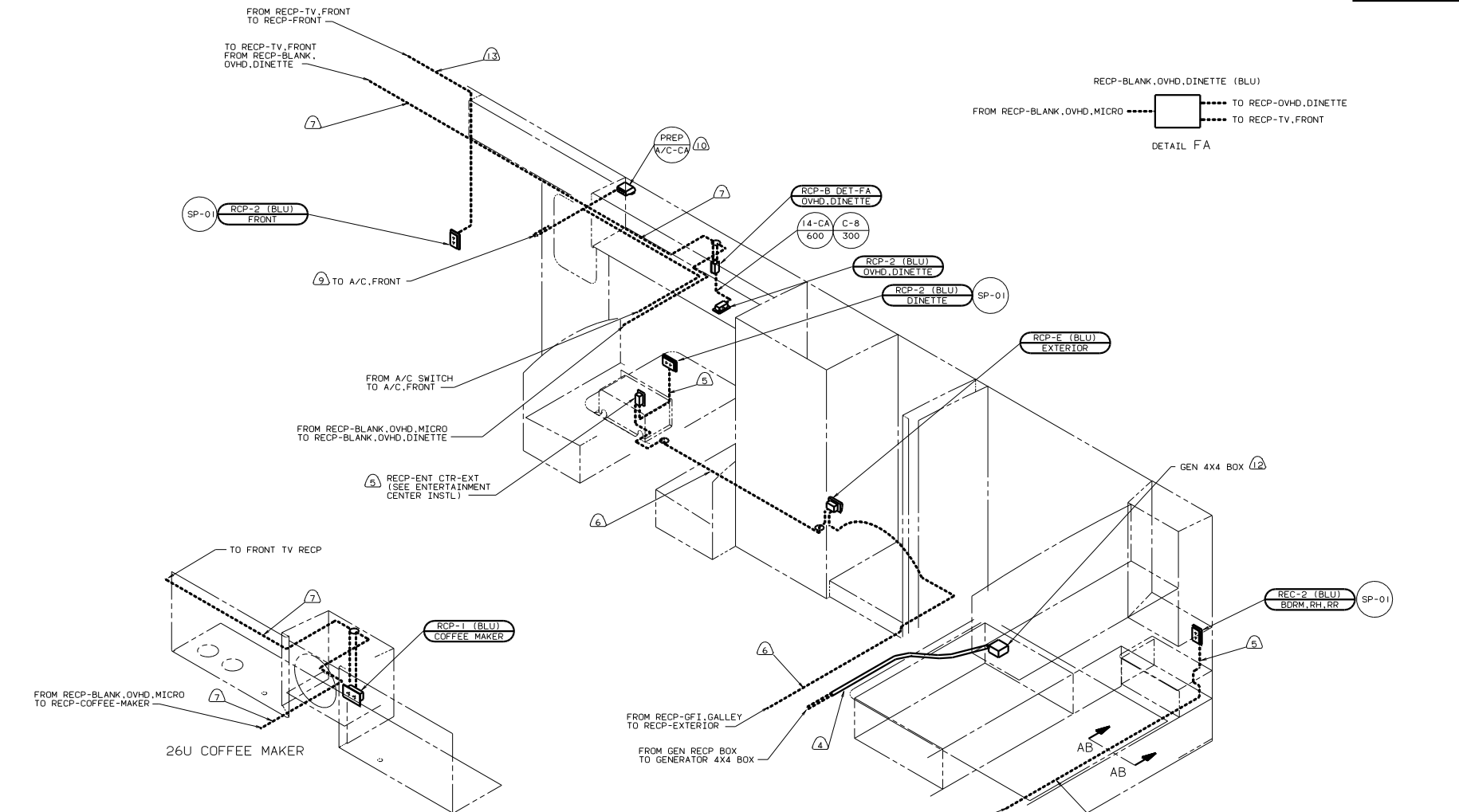
49X BED-QUEEN, CENTERED

45G BED-TWINS

X-X	FOR ELECTRICAL CALLOUTS SEE DWG NO. 121339-01-000	FOR ELECTRICAL TORQUE SPECIFICATIONS SEE DWG NO. 128783-01-000
-----	--	---

98 F31B
265 CODE STANDARDS-CSA
12D ELECTRICAL SYS-30 AMP

FILE	WIRING INSTL-BODY(110130CAN)
NO. OF SHEETS	12
SHEET NO.	5
REV	1
DATE	128893



- ⑬ WIRE IN SIDEWALL.
- ⑫ 39G GEN-6.5KW, EMERALD, GAS OR 40T GEN-5.0KW, EMERALD, GAS. OR 39E GEN-4.0KW, EMERALD, GAS.
- ⑪ 76C ENTERTAINMENT CTR-EXT. W/CASSETTE.
- ⑩ WITHOUT 250 A/C ROOF MOUNT - 14800 OR 29F A/C ROOF MOUNT - TWO 13500.
- ⑨ 250 A/C ROOF MOUNT - 14800 OR 29F A/C ROOF MOUNT - TWO 13500.
- ⑧ ROUTE INSIDE COMPARTMENT ALONG BACKWALL. CLAMP AS REQUIRED.
- ⑦ WIRE IN ROOF.
- ⑥ WIRE ROUTED THRU FLOOR DURING INSTALLATION.
- ⑤ WIRE ROUTED THRU SIDEWALL DURING INSTALLATION.
- ④ ROUTED BELOW MAIN FLOOR, ATTACH TO FLOOR FRAME.
- 3. ALL GROUND WIRES TO BE COVERED WITH TUBING 8041-02-000.
- 2. ALL WIRES ARE TO BE CLAMPED WITH CLAMP 10497-05-000 WITHIN 200 OF OUTLET BOXES. USE SCREW G67-10-12B, UNLESS OTHERWISE NOTED.
- 1. ALL WIRE TO BE CLAMPED WITH CLAMP 10495-01-000 OR CLIP 80734-02-000 EVERY 600. USE SCREW G67-10-12B UNLESS OTHERWISE SPECIFIED.

NOTES:

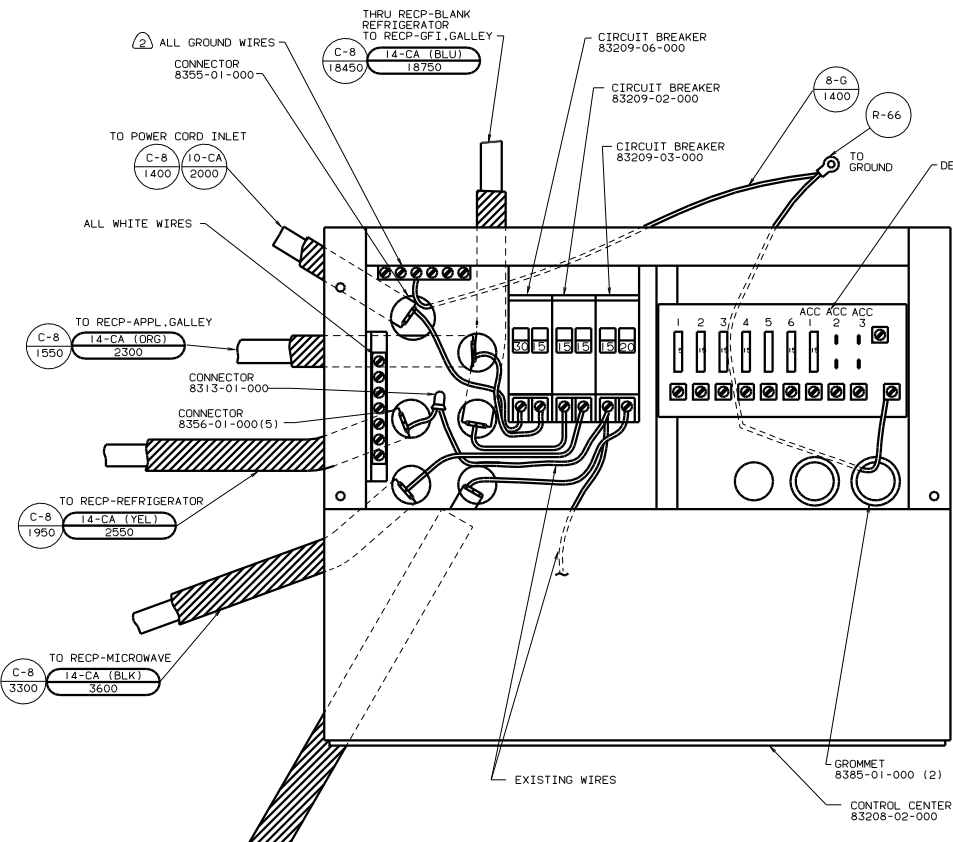
49X BED-QUEEN, CENTERED.
26E COFFEE MAKER-WITHOUT.

FOR ELECTRICAL
TORQUE
SPECIFICATIONS
SEE DWG NO.
128783-01-000

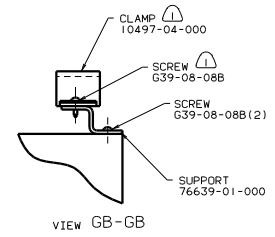
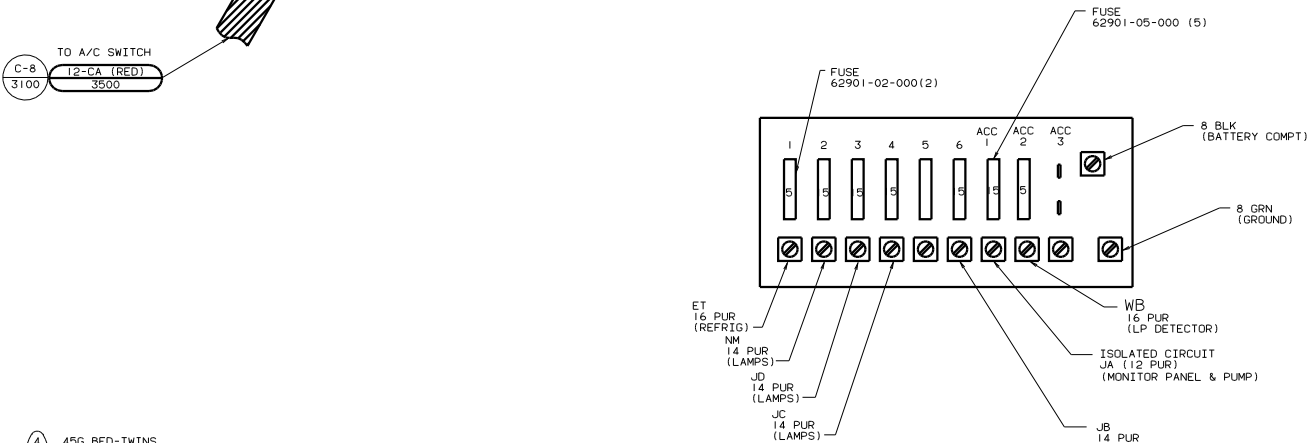
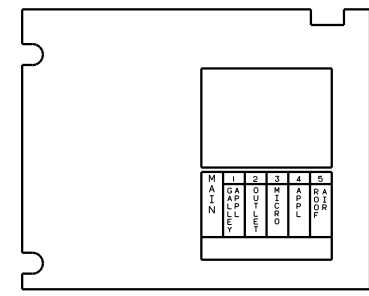
FOR
ELECTRICAL
CALLOUTS
SEE DWG NO.
121339-01-000

99 F31B
265 CODE STANDARDS-CSA
12D ELECTRICAL SYS-30 AMP

TITLE: WIRING INSTL-BODY (110R30CAN)
SHEET 6 OF 12
DWG NO. 128893



GB
GB



- ④ 45G BED-TWINS.
- ③ 49X BED-QUEEN CENTERED.
- ② ALL GROUND WIRES TO BE COVERED WITH TUBING 8041-02-000.
- ① FASTEN ALL WIRES TO SUPPORT. USE ONE SCREW PER CLAMP.

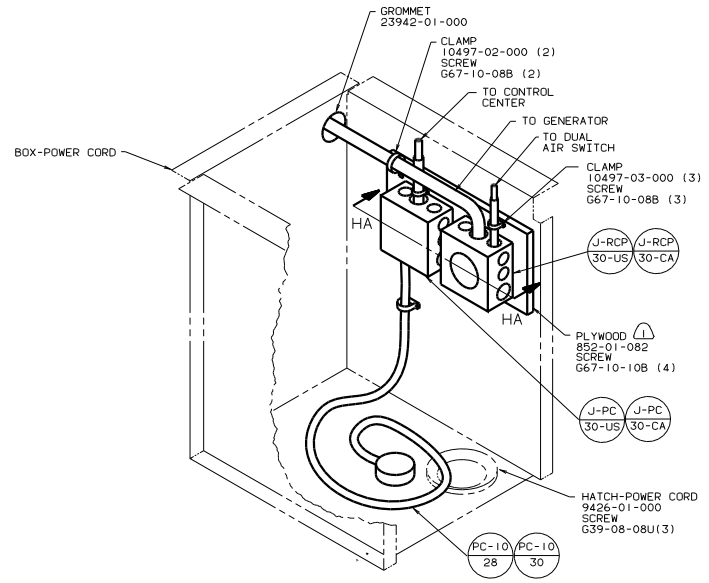
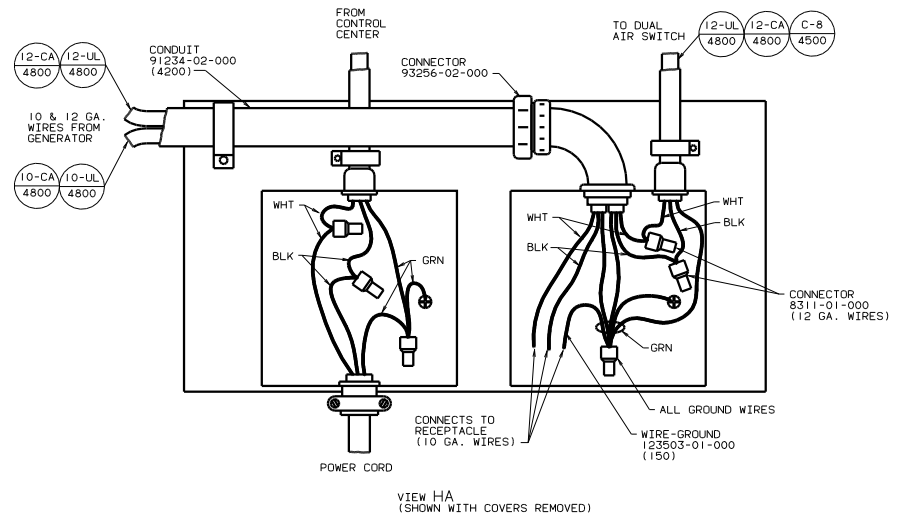
DETAIL GA

FOR ELECTRICAL TORQUE SPECIFICATIONS SEE DWG NO. 128783-01-000

FOR ELECTRICAL CALLOUTS SEE DWG NO. 121339-01-000

99 F31B CONTROL CENTER
265 CODE STANDARDS-CSA
12D ELECTRICAL SYS-30 AMP

WIRING INSTL-BODY(30 CC CAN)
SHEET 7 OF 12
128893



PAINT EXPOSED SURFACES BLACK 106112-01-000.

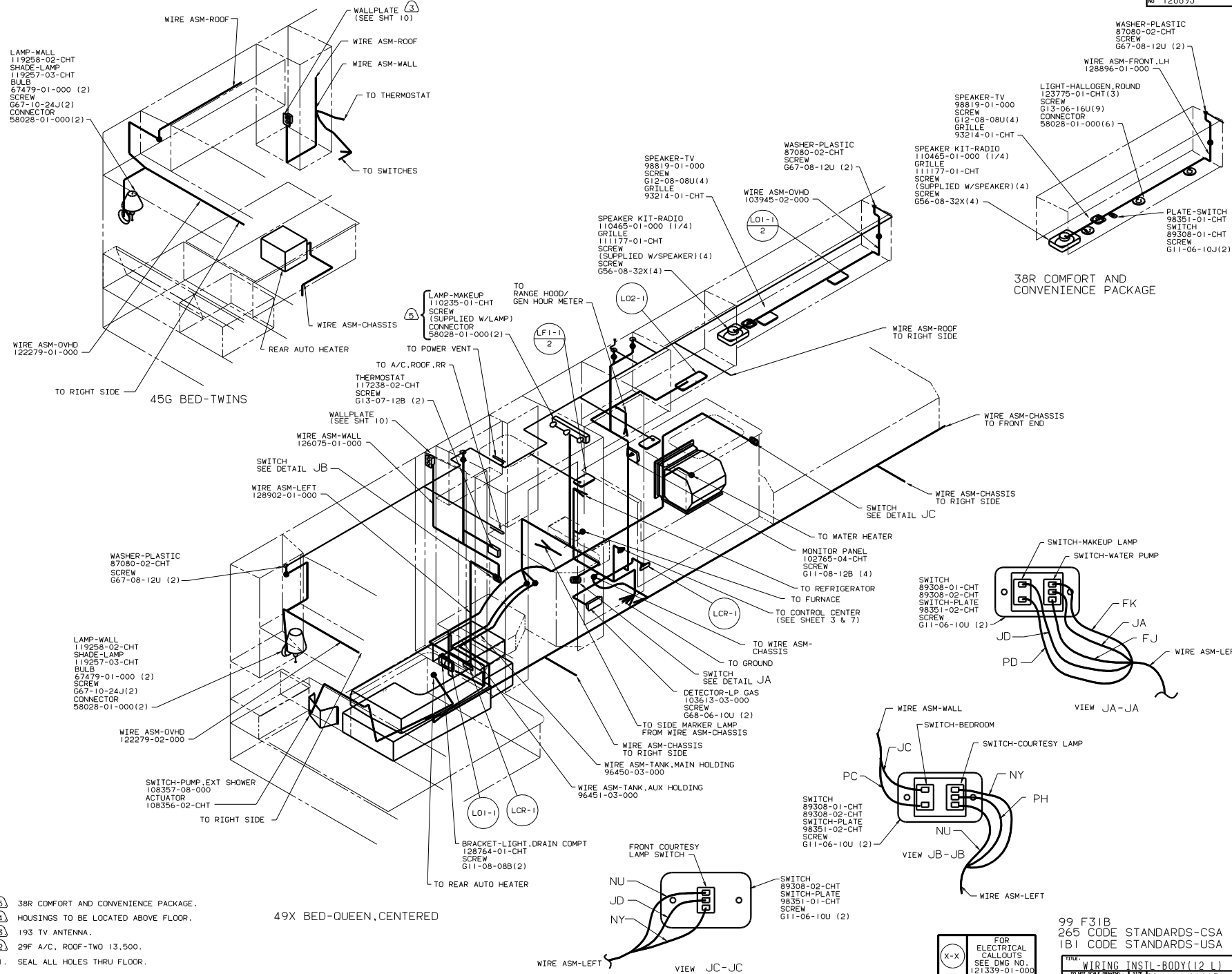
NOTES:

FOR ELECTRICAL TORQUE SPECIFICATIONS SEE DWG NO. 128783-01-000

FOR ELECTRICAL CALLOUTS SEE DWG NO. 121339-01-000

98 F31B
POWER CORD INLET
1B1 CODE STANDARD-USA
265 CODE STANDARD-CSA

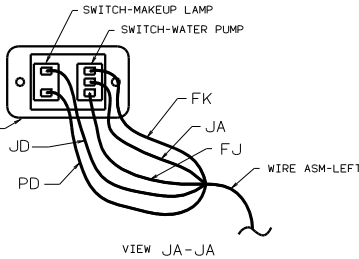
TITLE: WIRING INSTL-BODY
SHEET 8 OF 13



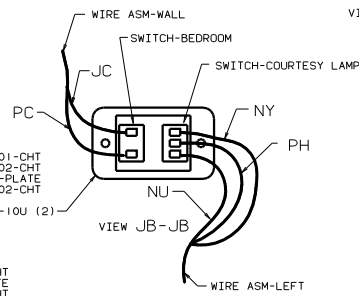
- ⑤ 38R COMFORT AND CONVENIENCE PACKAGE.
- ④ HOUSINGS TO BE LOCATED ABOVE FLOOR.
- ③ 193 TV ANTENNA.
- ② 29F A/C, ROOF-TWO 13,500.
- 1. SEAL ALL HOLES THRU FLOOR.

49X BED-QUEEN, CENTERED

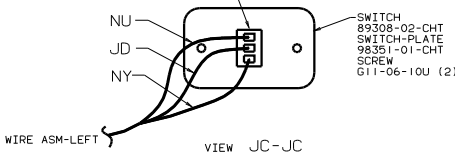
38R COMFORT AND CONVENIENCE PACKAGE



VIEW JA-JA



VIEW JB-JB

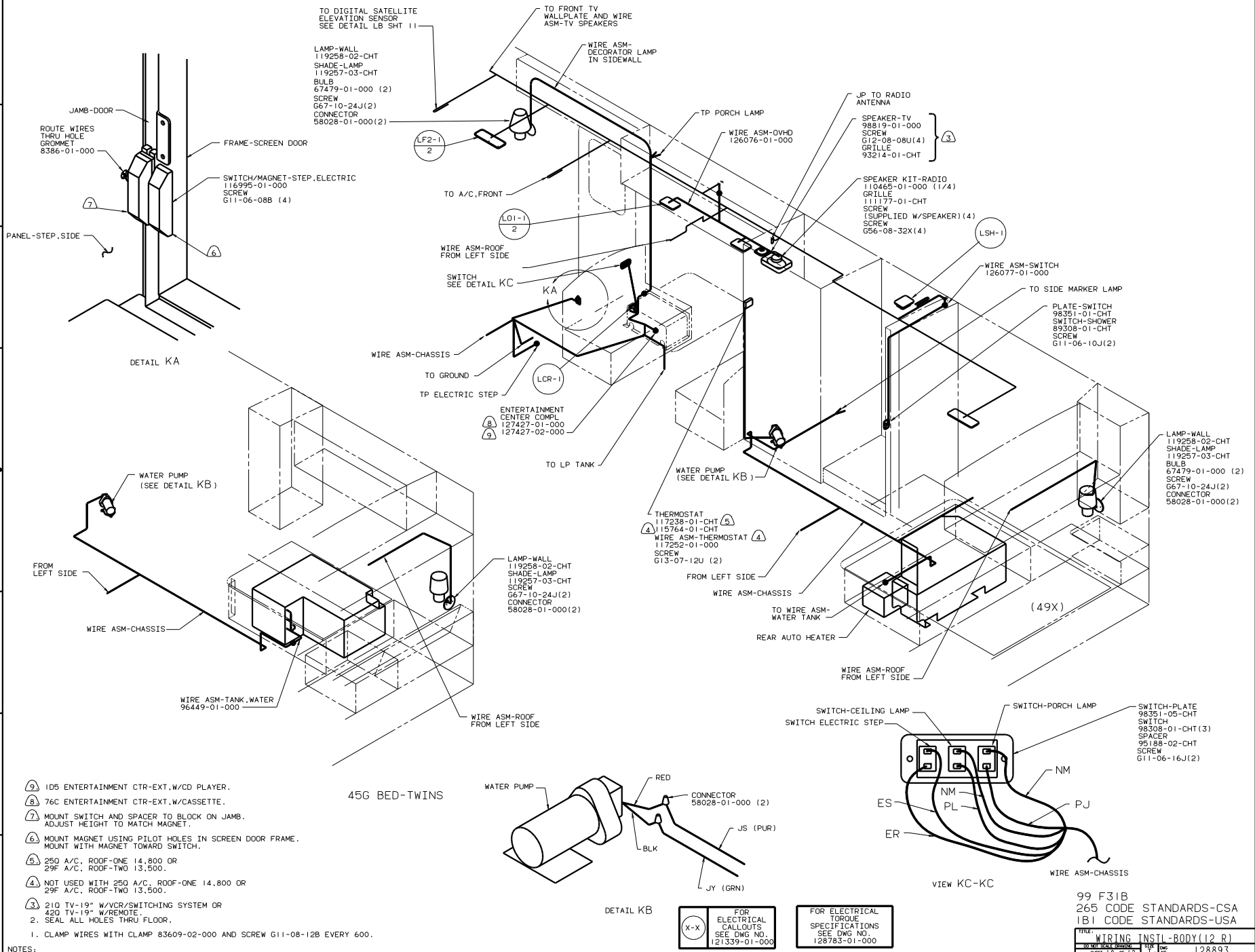


VIEW JC-JC

X-X
FOR ELECTRICAL CALLOUTS SEE DWG NO. 121339-01-000

99 F31B
265 CODE STANDARDS-CSA
181 CODE STANDARDS-USA

WIRING INSTL-BODY(12 L)
128893



TO DIGITAL SATELLITE ELEVATION SENSOR SEE DETAIL LB SHT 11

TO FRONT TV WALLPLATE AND WIRE ASM-TV SPEAKERS

LAMP-WALL 119258-02-CHT
SHADE-LAMP 119257-03-CHT
BULB 67479-01-000 (2)
SCREW G67-10-24J(2)
CONNECTOR 58028-01-000(2)

WIRE ASM-DECORATOR LAMP IN SIDEWALL

TP PORCH LAMP
WIRE ASM-OVHD 126076-01-000

JP TO RADIO ANTENNA

SPEAKER-TV 98819-01-000
SCREW G12-08-08U(4)
GRILLE 93214-01-CHT

JAMB-DOOR
ROUTE WIRES THRU HOLE GROMMET 8386-01-000
FRAME-SCREEN DOOR
SWITCH/MAGNET-STEP.ELECTRIC 116995-01-000
SCREW G11-06-08B (4)

TO A/C.FRONT

SPEAKER KIT-RADIO 110465-01-000 (1/4)
GRILLE 111177-01-CHT
SCREW (SUPPLIED W/SPEAKER) (4)
SCREW G56-08-32X (4)

PANEL-STEP.SIDE

WIRE ASM-ROOF FROM LEFT SIDE

WIRE ASM-SWITCH 126077-01-000

DETAIL KA

SWITCH SEE DETAIL KC

TO SIDE MARKER LAMP

WIRE ASM-CHASSIS

PLATE-SWITCH 98351-01-CHT
SWITCH-SHOWER 89308-01-CHT
SCREW G11-06-10J(2)

TO GROUND

ENTERTAINMENT CENTER COMPL 127427-01-000
127427-02-000

TO LP TANK

THERMOSTAT 117238-01-CHT
115764-01-CHT
WIRE ASM-THERMOSTAT 117252-01-000
SCREW G13-07-12U (2)

WATER PUMP (SEE DETAIL KB)

LAMP-WALL 119258-02-CHT
SHADE-LAMP 119257-03-CHT
BULB 67479-01-000 (2)
SCREW G67-10-24J(2)
CONNECTOR 58028-01-000(2)

WATER PUMP (SEE DETAIL KB)

FROM LEFT SIDE

LAMP-WALL 119258-02-CHT
SHADE-LAMP 119257-03-CHT
SCREW G67-10-24J(2)
CONNECTOR 58028-01-000(2)

FROM LEFT SIDE

WIRE ASM-CHASSIS

TO WIRE ASM-WATER TANK

WIRE ASM-ROOF FROM LEFT SIDE

WIRE ASM-CHASSIS

WIRE ASM-TANK.WATER 96449-01-000

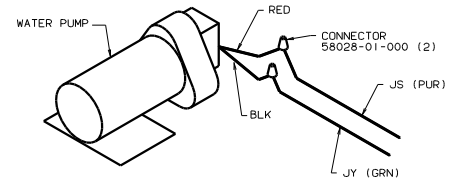
WIRE ASM-ROOF FROM LEFT SIDE

REAR AUTO HEATER

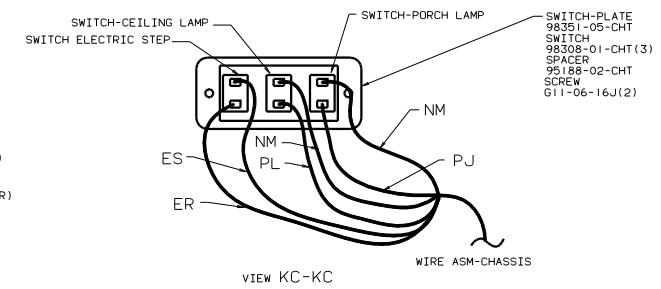
(49X)

- 1. CLAMP WIRES WITH CLAMP 83609-02-000 AND SCREW G11-08-12B EVERY 300.
- 2. SEAL ALL HOLES THRU FLOOR.
- 3. 210 TV-19" W/VCR/SWITCHING SYSTEM OR 420 TV-19" W/REMOTE.
- 4. NOT USED WITH 250 A/C. ROOF-ONE 14,800 OR 29F A/C. ROOF-TWO 13,500.
- 5. 250 A/C. ROOF-ONE 14,800 OR 29F A/C. ROOF-TWO 13,500.
- 6. MOUNT MAGNET USING PILOT HOLES IN SCREEN DOOR FRAME. MOUNT WITH MAGNET TOWARD SWITCH.
- 7. MOUNT SWITCH AND SPACER TO BLOCK ON JAMB. ADJUST HEIGHT TO MATCH MAGNET.
- 8. 76C ENTERTAINMENT CTR-EXT.W/CASSETTE.
- 9. 105 ENTERTAINMENT CTR-EXT.W/CD PLAYER.

45G BED-TWIN



DETAIL KB



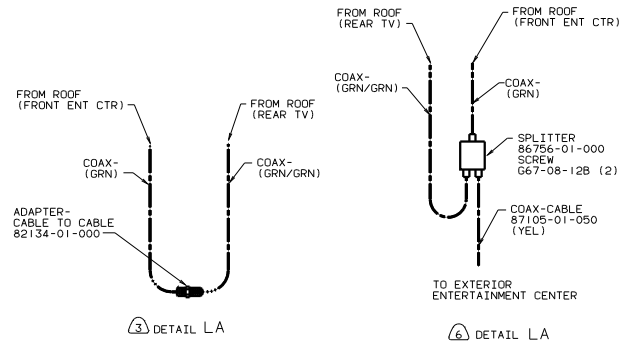
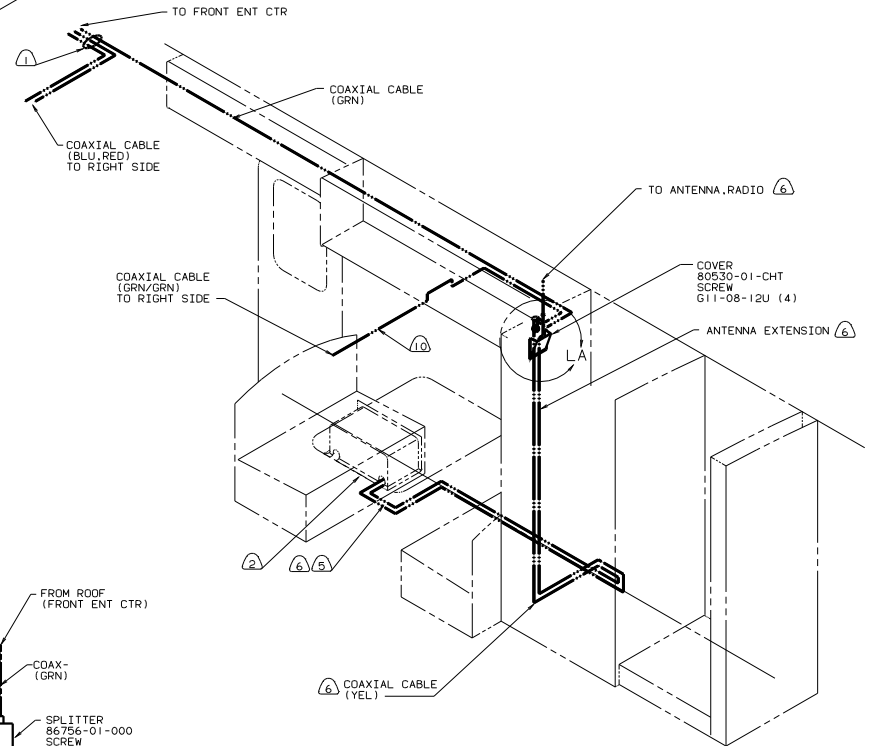
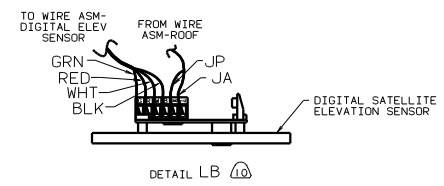
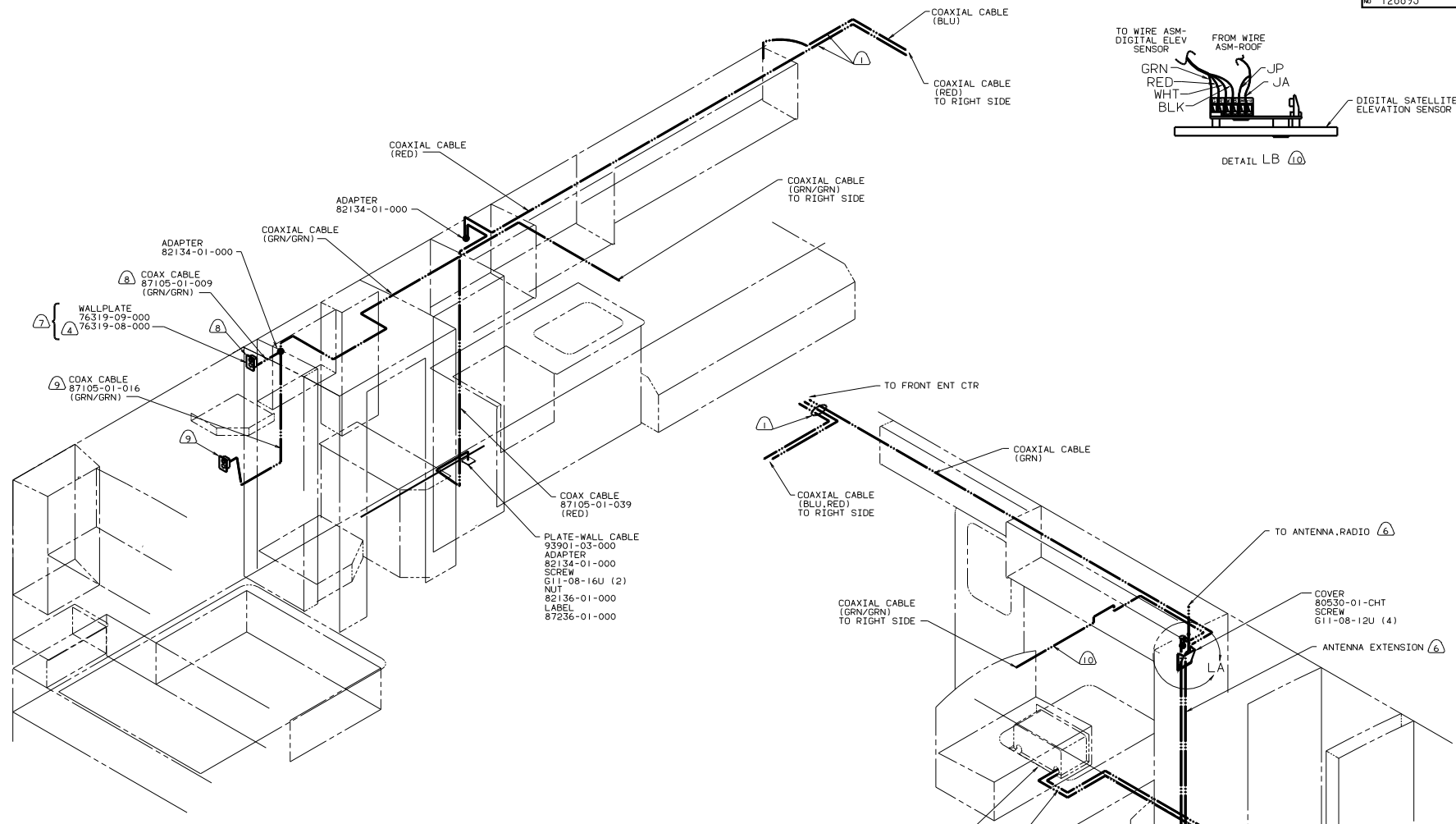
VIEW KC-KC

FOR ELECTRICAL CALLOUTS SEE DWG NO. 121339-01-000

FOR ELECTRICAL TORQUE SPECIFICATIONS SEE DWG NO. 128783-01-000

99 F31B
265 CODE STANDARDS-CSA
1B1 CODE STANDARDS-USA

WIRING INSTL-BODY(12_R)
SHEET 10 OF 12

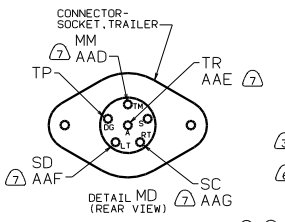
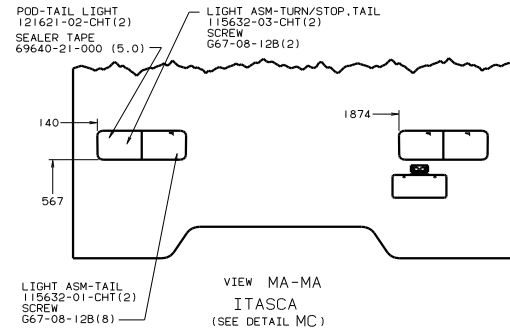
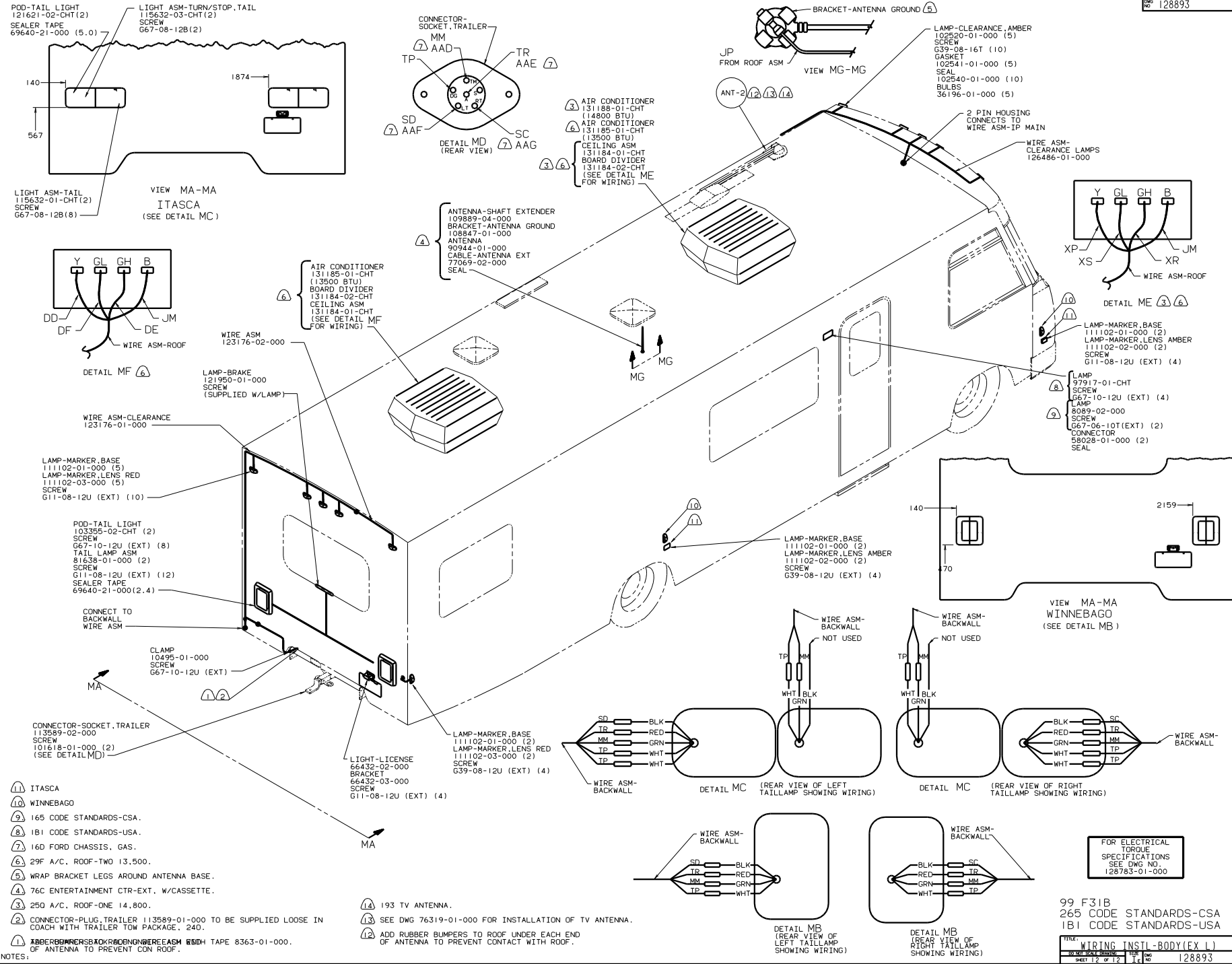


- NOTES:
- ⑩ 480 SATELLITE DISH.
 - ⑨ 45G BED-TWINS.
 - ⑧ 49X BED-QUEEN CENTERED.
 - ⑦ NOT USED WITH 210 TV-19" W/VCR/SWITCHING SYSTEM OR 420 TV-19" W/REMOTE.
 - ⑥ 76C ENTERTAINMENT CTR-EXT W/CASSETTE OR 1DS ENTERTAINMENT CTR-EXT W/CD PLAYER
 - ⑤ ROUTED THRU FLOOR.
 - ④ USE WITH DECORATIVE PANELING.
 - ③ WITHOUT 76C ENTERTAINMENT CTR-EXT W/CASSETTE OR 1DS ENTERTAINMENT CTR-EXT W/CD PLAYER
 - ② SEE ENTERTAINMENT CENTER INSTALLATION FOR ADDITIONAL INFORMATION.
 - ① WIRE IN ROOF

FOR ELECTRICAL
TORQUE
SPECIFICATIONS
SEE DWG NO.
128783-01-000

99 F31B
265 CODE STANDARDS-CSA
1B1 CODE STANDARDS-USA

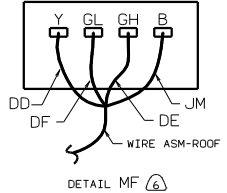
TITLE	WIRING INSTL-BODY(COAX)
NO. OF SHEETS	11 OF 12
SHEET NO.	11
REV	1
DATE	128893



- (3) AIR CONDITIONER
131188-01-CHT
(14800 BTU)
- (6) AIR CONDITIONER
131185-01-CHT
(13500 BTU)
- (3) CEILING ASM
131184-01-CHT
BOARD DIVIDER
131184-02-CHT
(SEE DETAIL ME
FOR WIRING)

- (4) ANTENNA-SHAFT EXTENDER
109889-04-000
- BRACKET-ANTENNA GROUND
109847-01-000
- ANTENNA
90944-01-000
- CABLE-ANTENNA EXT
77069-02-000
- SEAL

- (6) AIR CONDITIONER
131185-01-CHT
(13500 BTU)
- BOARD DIVIDER
131184-02-CHT
- CEILING ASM
131184-01-CHT
(SEE DETAIL MF
FOR WIRING)



- WIRE ASM
123176-02-000

- LAMP-BRAKE
121950-01-000
SCREW
(SUPPLIED W/LAMP)

- WIRE ASM-CLEARANCE
123176-01-000

- LAMP-MARKER, BASE
111102-01-000 (5)
- LAMP-MARKER, LENS RED
111102-03-000 (5)
- SCREW
G11-08-12U (EXT) (10)

- POD-TAIL LIGHT
103355-02-CHT (2)
- SCREW
G67-10-12U (EXT) (8)
- TAIL LAMP ASM
81638-01-000 (2)
- SCREW
G11-08-12U (EXT) (12)
- SEALER TAPE
69640-21-000(2.4)

CONNECT TO
BACKWALL
WIRE ASM

- CLAMP
10495-01-000
SCREW
G67-10-12U (EXT)

- CONNECTOR-SOCKET, TRAILER
113589-02-000
SCREW
101618-01-000 (2)
(SEE DETAIL MD)

- LAMP-MARKER, BASE
66432-02-000
- BRACKET
66432-03-000
SCREW
G39-08-12U (EXT) (4)

- (11) ITASCA
- (10) WINNEBAGO
- (9) 165 CODE STANDARDS-CSA.
- (8) 181 CODE STANDARDS-USA.
- (7) 160 FORD CHASSIS, GAS.
- (6) 29F A/C, ROOF-TWO 13,500.
- (5) WRAP BRACKET LEGS AROUND ANTENNA BASE.
- (4) 76C ENTERTAINMENT CTR-EXT. W/CASSETTE.
- (3) 250 A/C, ROOF-ONE 14,800.
- (2) CONNECTOR-PLUG, TRAILER 113589-01-000 TO BE SUPPLIED LOOSE IN COACH WITH TRAILER TOW PACKAGE, 240.
- (1) ~~ABBERBERSACKRONDONNEREASM RSDH TAPE 8363-01-000. OF ANTENNA TO PREVENT CON ROOF.~~

- (14) 193 TV ANTENNA.
- (13) SEE DWG 76319-01-000 FOR INSTALLATION OF TV ANTENNA.
- (12) ADD RUBBER BUMPERS TO ROOF UNDER EACH END OF ANTENNA TO PREVENT CONTACT WITH ROOF.

FOR ELECTRICAL
TORQUE
SPECIFICATIONS
SEE DWG NO.
128783-01-000

99 F31B
265 CODE STANDARDS-CSA
181 CODE STANDARDS-USA

FILE:	WIRING INSTL-BODY(EX LJ)
NO. OF SHEETS:	16
SHEET NO. OF 16:	12
DATE:	128893