



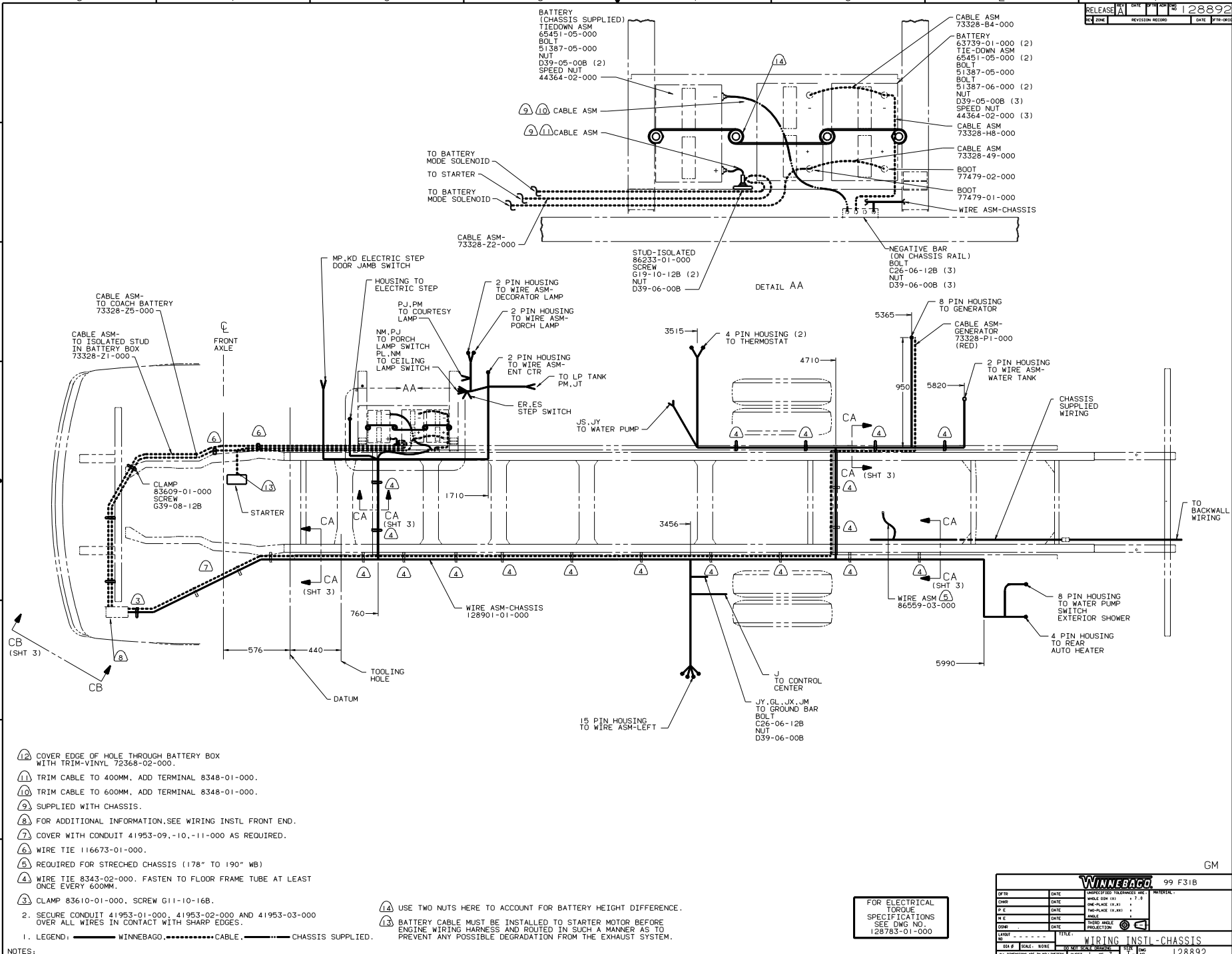
DANGER

Danger of electrical shock, burns or death. Always remove all power sources before attempting any repair, service or diagnostic work. Power can be present from shore power, generator, inverter or battery. All power sources must be disabled and secured before performing any service.



CAUTION

If you lack the skills, tools or equipment to perform diagnostic or repair work leave such work to an authorized Winnebago Industries dealer or other qualified shop.



- (12) COVER EDGE OF HOLE THROUGH BATTERY BOX WITH TRIM-VINYL 72368-02-000.
- (11) TRIM CABLE TO 400MM, ADD TERMINAL 8348-01-000.
- (10) TRIM CABLE TO 600MM, ADD TERMINAL 8348-01-000.
- (9) SUPPLIED WITH CHASSIS.
- (8) FOR ADDITIONAL INFORMATION, SEE WIRING INSTL FRONT END.
- (7) COVER WITH CONDUIT 41953-09,-10,-11-000 AS REQUIRED.
- (6) WIRE TIE 116673-01-000.
- (5) REQUIRED FOR STRECHED CHASSIS (178" TO 190" WB)
- (4) WIRE TIE 8343-02-000. FASTEN TO FLOOR FRAME TUBE AT LEAST ONCE EVERY 600MM.
- (3) CLAMP 83610-01-000, SCREW G11-10-16B.

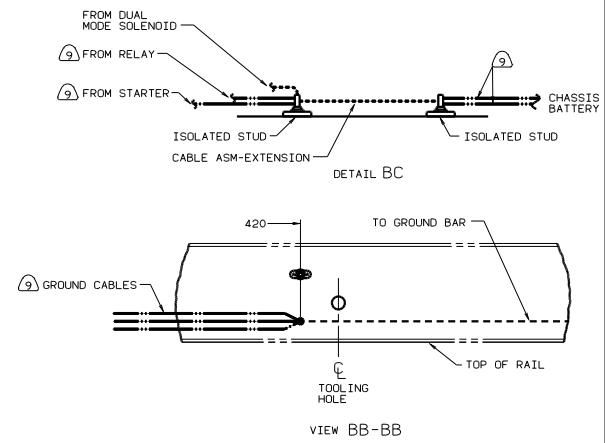
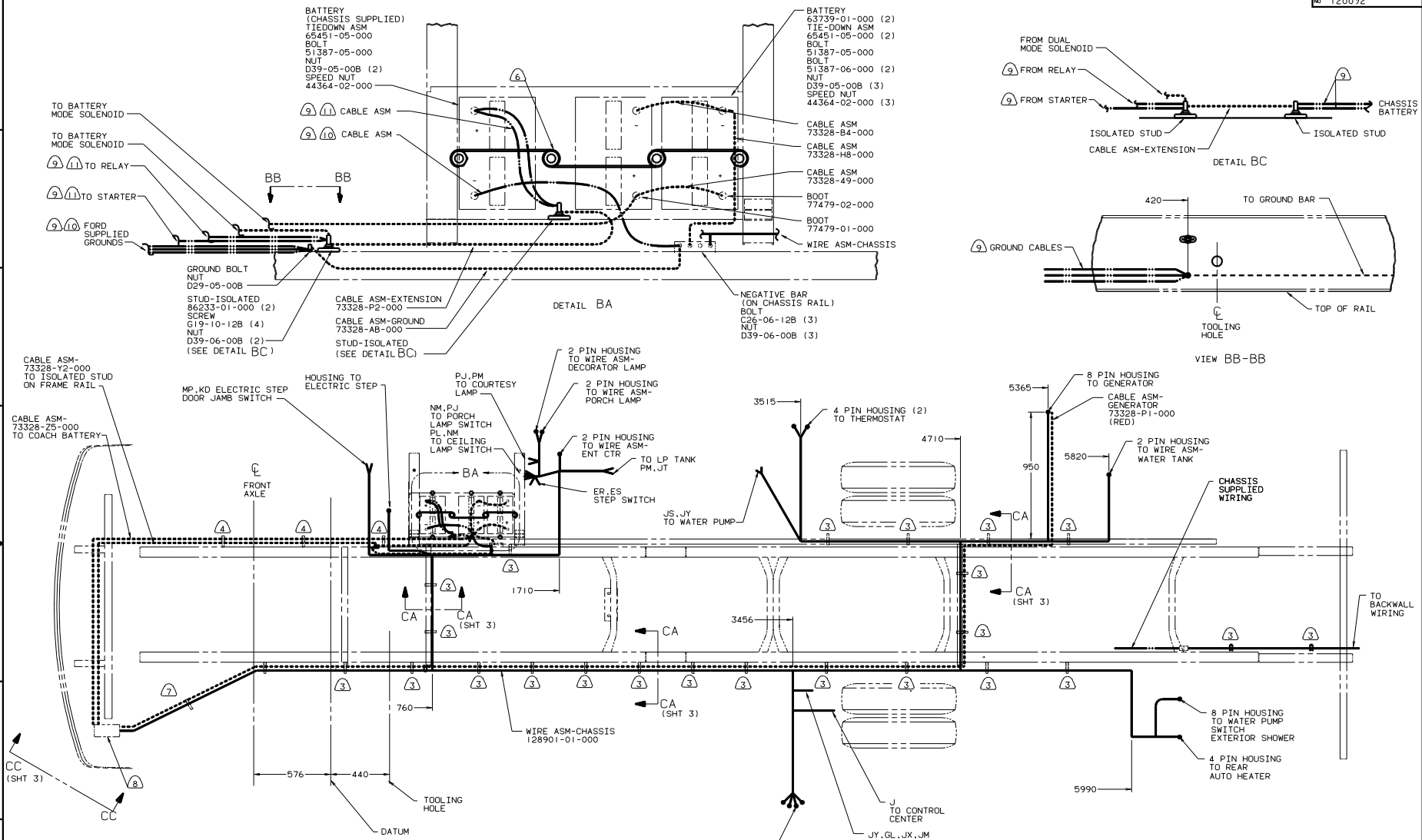
- (14) USE TWO NUTS HERE TO ACCOUNT FOR BATTERY HEIGHT DIFFERENCE.
- (13) BATTERY CABLE MUST BE INSTALLED TO STARTER MOTOR BEFORE ENGINE WIRING HARNESS AND ROUTED IN SUCH A MANNER AS TO PREVENT ANY POSSIBLE DEGRADATION FROM THE EXHAUST SYSTEM.

1. LEGEND: — WINNEBAGO, - - - - - CABLE, - - - - - CHASSIS SUPPLIED.
 NOTES:

FOR ELECTRICAL TORQUE SPECIFICATIONS SEE DWG NO. 128783-01-000

| DATE | | UNDESIGNED TOLERANCES ARE: | | MATERIAL |
|------|------|----------------------------|---------------------|----------|
| DATE | DATE | WHOLE DIM (IN) | FRACTIONAL DIM (IN) | |
| DATE | DATE | ONE-PLACE (IN) | ONE-PLACE (IN) | |
| DATE | DATE | TWO-PLACE (IN) | TWO-PLACE (IN) | |
| DATE | DATE | THREE-PLACE (IN) | THREE-PLACE (IN) | |
| DATE | DATE | FOUR-PLACE (IN) | FOUR-PLACE (IN) | |

WINNEBAGO 99 F31B
 TITLE: WIRING INSTL-CHASSIS
 SHEET 1 OF 3
 REF: 128863-H I



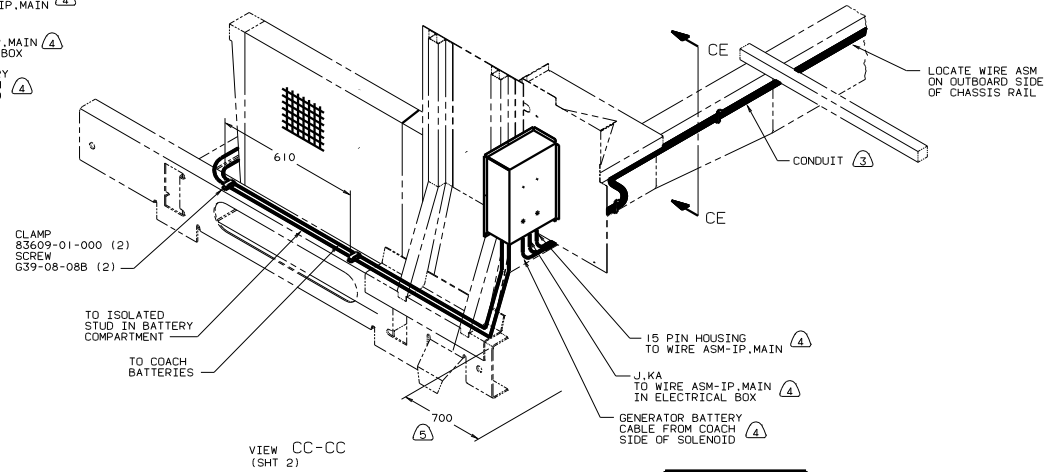
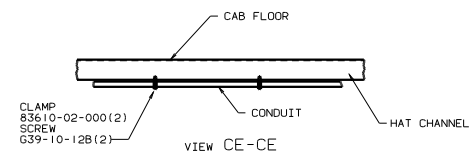
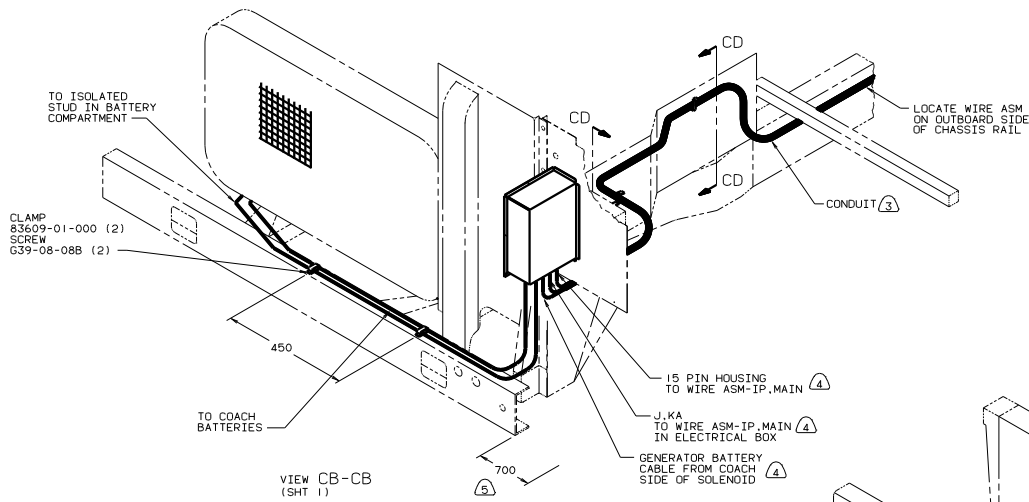
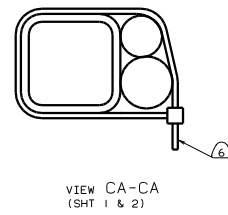
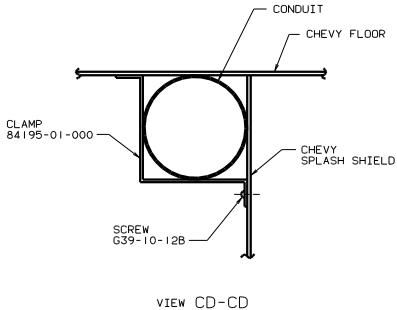
- ⑪ CUT 4 & 6 GA CABLES 400 FROM BATTERY TERMINAL. ADD TERMINAL 8331-01-000(2) TO 4 GA, AND TERMINAL 8390-01-000(2) TO 6 GA CABLE. CONNECT ALL FOUR TERMINALS TO ISOLATED STUD AS SHOWN IN DETAIL H. DO NOT CUT 14 GA RED WIRE.
- ⑩ TRIM CABLE TO 500MM, ADD TERMINALS 8348-01-000(2)
- ⑨ SUPPLIED WITH CHASSIS.
- ⑧ FOR ADDITIONAL INFORMATION SEE WIRING INSTL FRONT END.
- ⑦ COVER WITH CONDUIT 41953-09,-10,-11-000 AS REQUIRED.
- ⑥ USE TWO NUTS HERE TO ACCOUNT FOR BATTERY HEIGHT DIFFERENCE.
- ⑤ COVER EDGE OF HOLE THROUGH BATTERY BOX WITH TRIM-VINYL 72368-02-000.
- ④ CLAMP 83609-01-000, SCREW G11-10-16B.
- ③ WIRE TIE 8343-02-000. FASTEN TO FLOOR FRAME TUBE AT LEAST ONCE EVERY 600MM.

2. SECURE CONDUIT 41953-01-000, 41953-02-000 AND 41953-03-000 OVER ALL WIRES IN CONTACT WITH SHARP EDGES.

1. LEGEND: — WINNEBAGO, CABLE, — CHASSIS SUPPLIED.

FOR ELECTRICAL TORQUE SPECIFICATIONS SEE DWG NO. 128783-01-000

99 F31B FORD
 TITLE: WIRING INSTL-CHASSIS
 SHEET 2 OF 3
 128892



- (6) CUT OFF EXCESS END OF WIRE TIE.
- (5) LAY BATTERY AND GENERATOR CABLES TO THIS DIMENSION FROM END OF CHASSIS CROSSMEMBER TO START INSTALLATION.
- (4) SEE WIRING INSTL-FRONT END FOR ADDITIONAL INFORMATION.
- (3) COVER WITH CONDUIT 41953-09,-10,-11-000 AS REQUIRED.

2. SECURE CONDUIT 41953-01-000, 41953-02-000 AND 41953-03-000 OVER ALL WIRES IN CONTACT WITH SHARP EDGES.

1. LEGEND: — WINNEBAGO, CABLE, — CHASSIS SUPPLIED.

FOR ELECTRICAL TORQUE SPECIFICATIONS SEE DWG NO 128783-01-000

99 F31B

| | | | |
|-----------------------------|-----|--------|-----|
| DATE | REV | BY | CHK |
| | | | |
| TITLE: WIRING INSTL-CHASSIS | | | |
| SHEET 3 OF 3 | | 125863 | |