



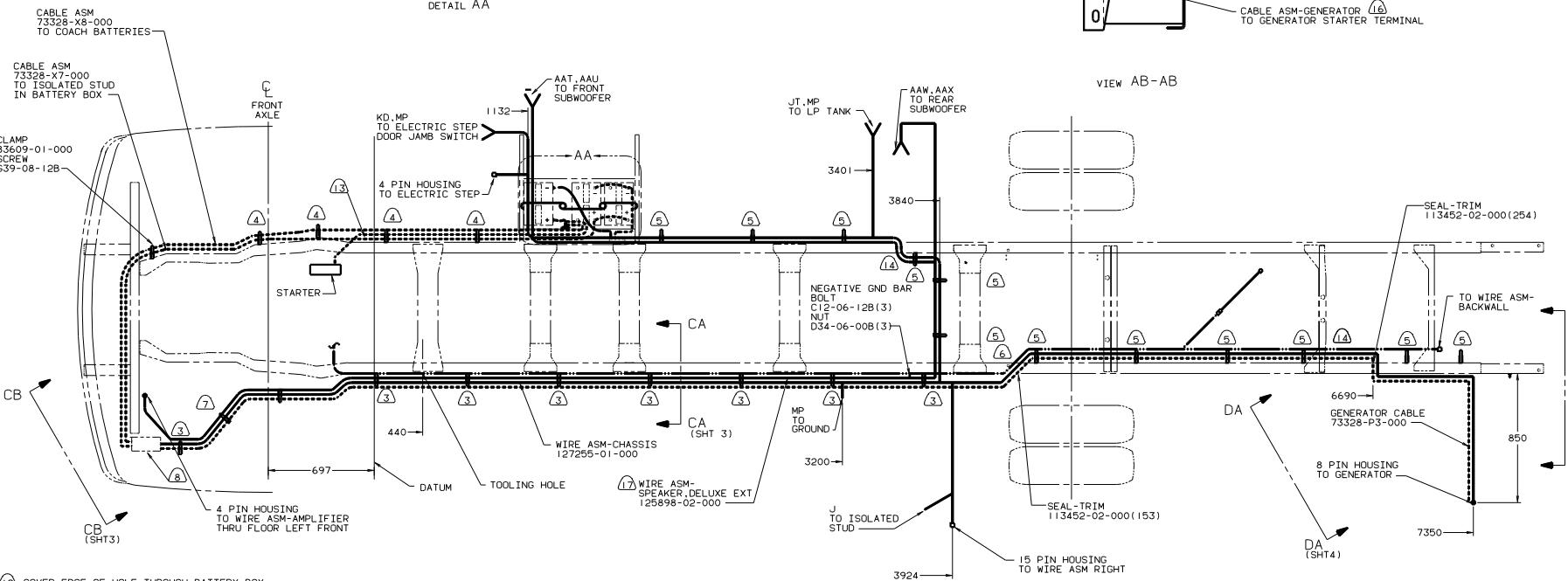
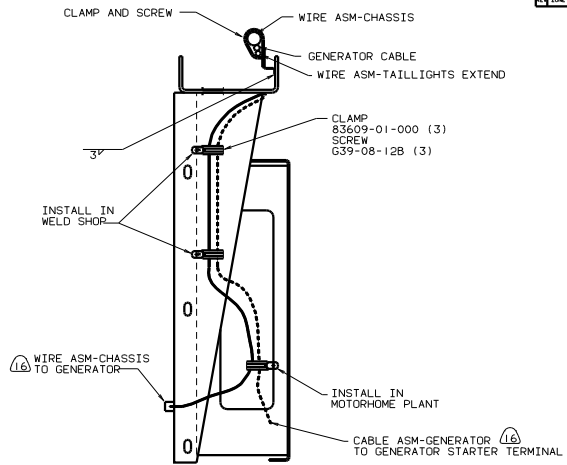
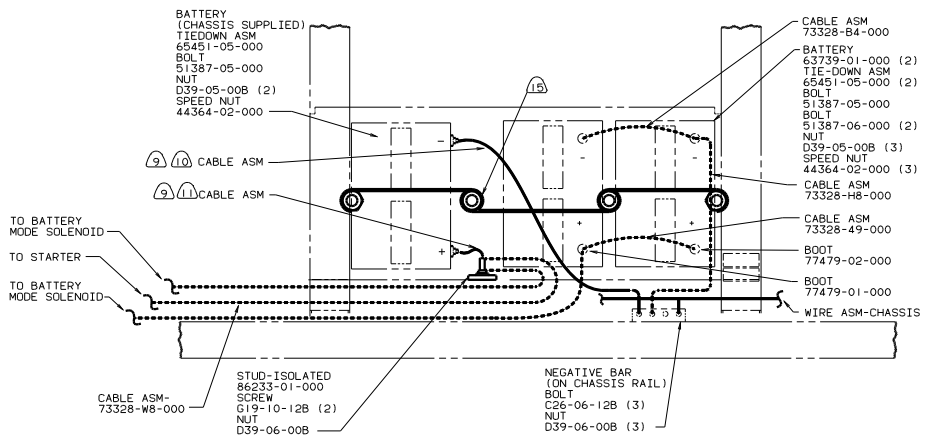
DANGER

Danger of electrical shock, burns or death. Always remove all power sources before attempting any repair, service or diagnostic work. Power can be present from shore power, generator, inverter or battery. All power sources must be disabled and secured before performing any service.



CAUTION

If you lack the skills, tools or equipment to perform diagnostic or repair work leave such work to an authorized Winnebago Industries dealer or other qualified shop.



- 12 COVER EDGE OF HOLE THROUGH BATTERY BOX WITH TRIM-VINYL 72368-02-000.
- 11 TRIM CABLE TO 400MM, ADD TERMINAL 8348-01-000.
- 10 TRIM CABLE TO 800MM, ADD TERMINAL 8348-01-000.
- 9 SUPPLIED WITH CHASSIS.
- 8 SEE WIRING INSTL-FRONT END FOR ADDITIONAL INFORMATION.
- 7 COVER WITH CONDUIT 41953-09-000, 41953-10-000 & 41953-11-000 AS REQUIRED.
- 6 ROUTE WIRES AND CABLE OVER SPRING HANGER AND ON TOP OF CHASSIS RAIL AT THIS POINT.
- 5 CLAMP 10497-03-000, SCREW G39-08-12B
- 4 CLAMP 83609-01-000, SCREW G39-08-12B
- 3 CLAMP 83610-01-000, SCREW G39-08-12B.

- 17 21V SOUND SYSTEM-DLX.
- 16 SECURE SO WIRES DO NOT CONTACT EXHAUST.
- 15 USE TWO NUTS HERE TO ACCOUNT FOR BATTERY HEIGHT DIFFERENCE.
- 14 ROUTE WIRES & CABLE UNDER CHASSIS RAIL AT THIS POINT
- 13 BATTERY CABLE MUST BE INSTALLED TO STARTER MOTOR BEFORE ENGINE WIRING HARNESS AND ROUTED IN SUCH A MANNER AS TO PREVENT ANY POSSIBLE DEGRADATION FROM THE EXHAUST SYSTEM.

2. SECURE CONDUIT 41953-01-000, 41953-02-000 AND 41953-03-000 OVER ALL WIRES IN CONTACT WITH SHARP EDGES.

1. LEGEND: — WINNEBAGO, - - - - - CABLE, - - - - - CHASSIS SUPPLIED.

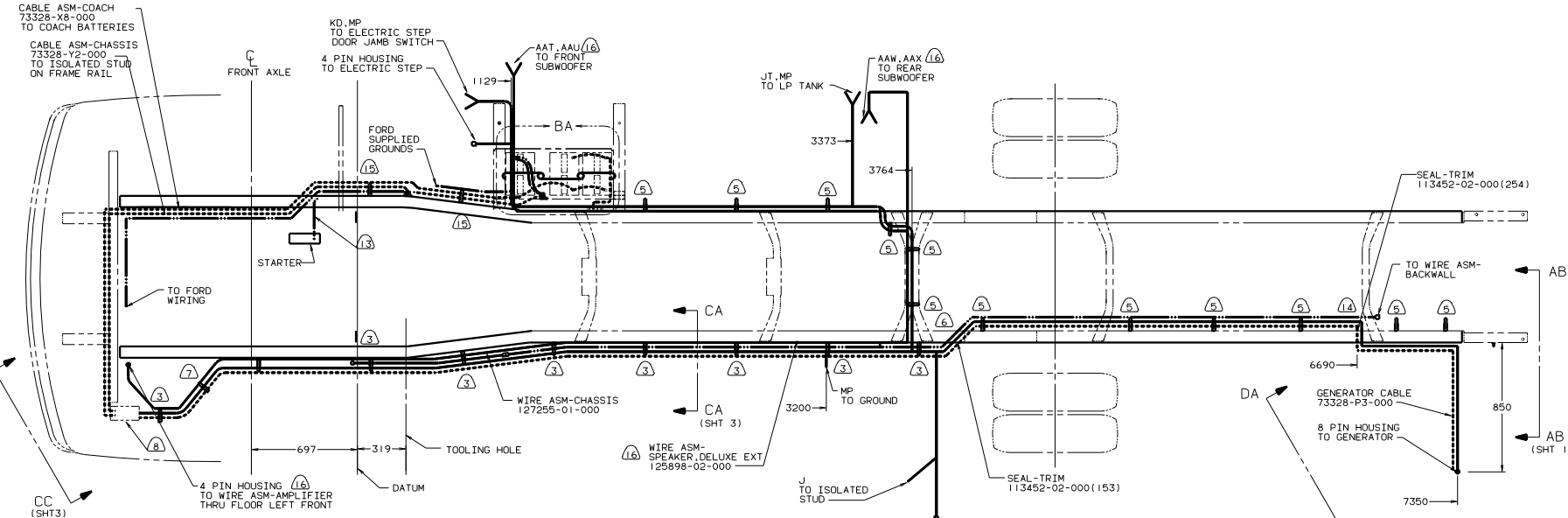
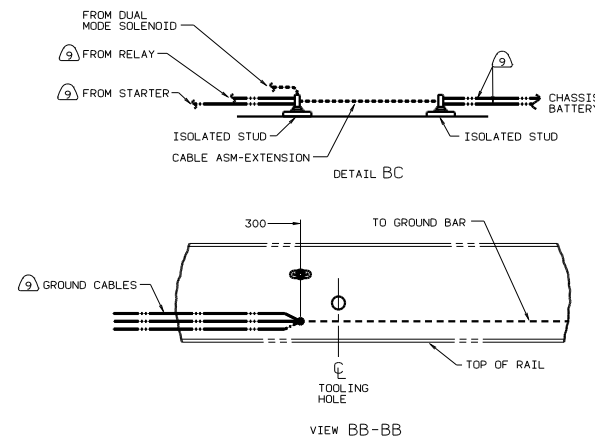
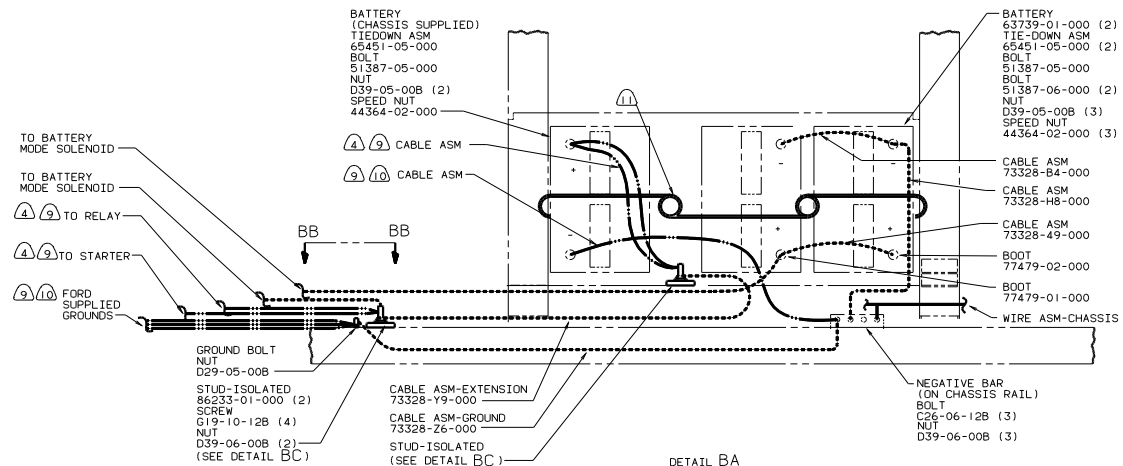
FOR ELECTRICAL TORQUE SPECIFICATIONS SEE DWG NO. 128783-01-000

ICQ CHEVY CHASSIS, GAS
 IBI CODE STANDARDS-USA
 265 CODE STANDARDS-CSA

WINNEBAGO 99 F & G32T

DATE	BY	DESCRIPTION

DRAWING NO. 128873
 SHEET 1 OF 4
 TITLE: WIRING INSTL-CHASSIS
 REF: 126142 K I
 128873



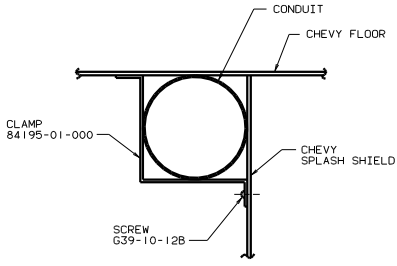
- (12) COVER EDGE OF HOLE THROUGH BATTERY BOX WITH TRIM-VINYL 72368-02-000.
- (11) USE TWO NUTS HERE TO ACCOUNT FOR BATTERY HEIGHT DIFFERENCE.
- (10) TRIM CABLE TO 500MM. ADD TERMINALS 8348-01-000(2).
- (9) SUPPLIED WITH CHASSIS.
- (8) SEE WIRING INSTL-FRONT END FOR ADDITIONAL INFORMATION.
- (7) COVER WITH CONDUIT 41953-09-000, 41953-10-000 & 41953-11-000 AS REQUIRED.
- (6) ROUTE WIRES AND CABLE OVER SPRING HANGER AND ON TOP OF CHASSIS RAIL AT THIS POINT. ATTACH TO FLOOR SUPPORT OVER AXLE.
- (5) CLAMP 10497-03-000, SCREW G39-08-12B.
- (4) CUT 14GA WIRE, 6 & 4GA CABLES 500 MM FROM BATTERY TERMINAL. ADD TERMINAL 8331-01-000(2) TO 4GA CABLES AND TERMINAL 8350-01-000(2) TO 14GA WIRES & 6GA CABLES. CONNECT TERMINALS TO ISOLATED STUDS AS SHOWN IN DETAIL P.
- (3) CLAMP 83610-01-000, SCREW G39-08-12B.

- (16) USE WITH DELUXE SOUND SYSTEM. (21V)
- (15) CLAMP 83609-01-000, SCREW G39-08-12B.
- (14) ROUTE WIRES & CABLE INSIDE CHASSIS RAIL AT THIS POINT & TO THE REAR.
- (13) BATTERY CABLE MUST BE INSTALLED TO STARTER MOTOR BEFORE ENGINE WIRING HARNESS AND ROUTED IN SUCH A MANNER AS TO PREVENT ANY POSSIBLE DEGRADATION FROM THE EXHAUST SYSTEM.

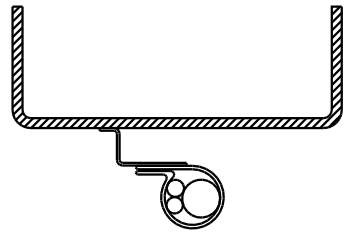
FOR ELECTRICAL TORQUE SPECIFICATIONS SEE DWG NO 128783-01-000

99 F & G32T
 16R, 16H, 16M FORD CHASSIS
 IBI CODE STANDARDS-USA
 265 CODE STANDARDS-CSA

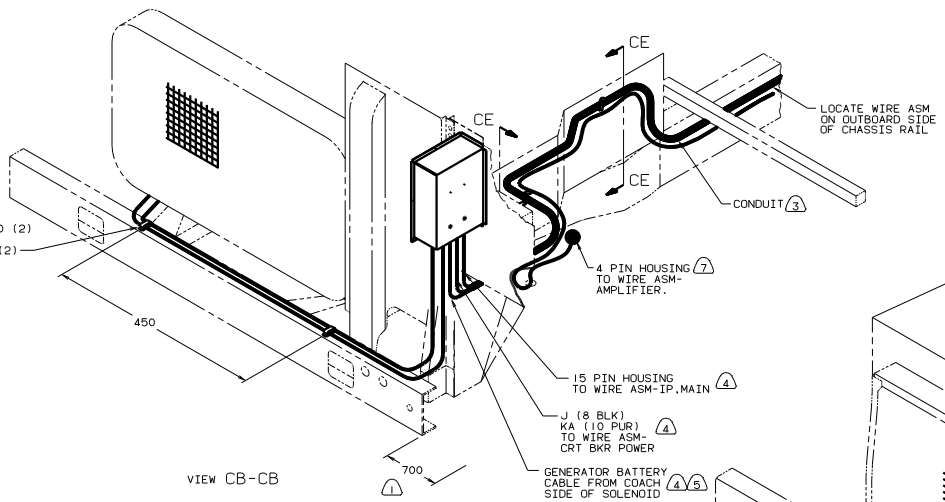
TITLE	
WIRING INSTL-CHASSIS	128873
NO. OF SHEETS	4
SHEET NO.	2
DATE	11/97
REV	1



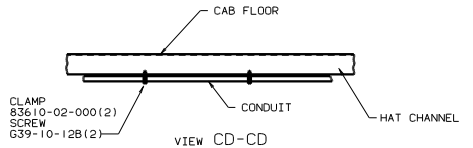
VIEW CE-CE



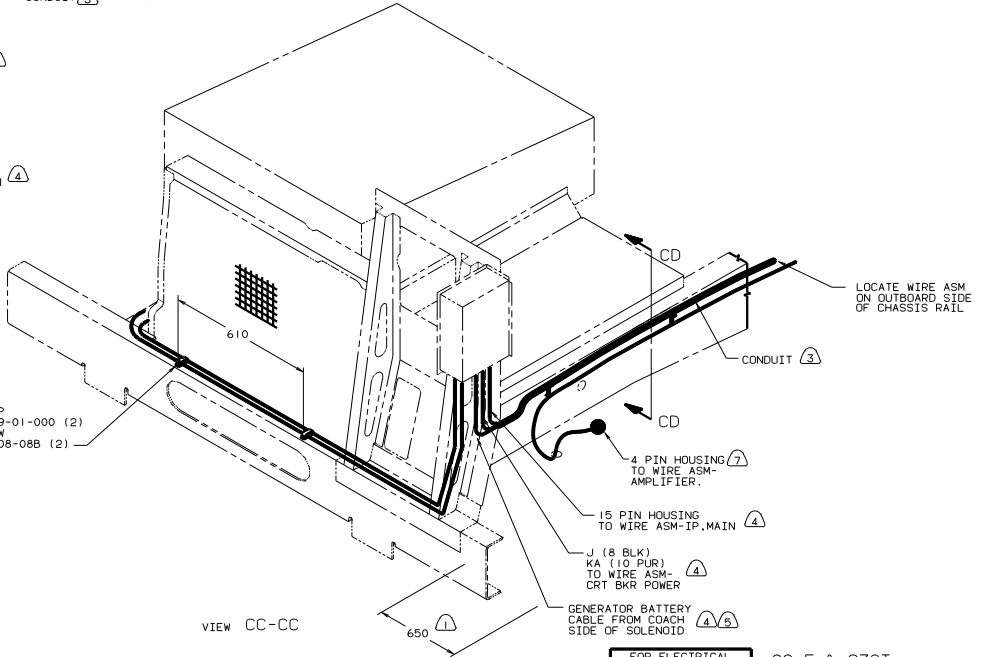
VIEW CA-CA



VIEW CB-CB



VIEW CD-CD



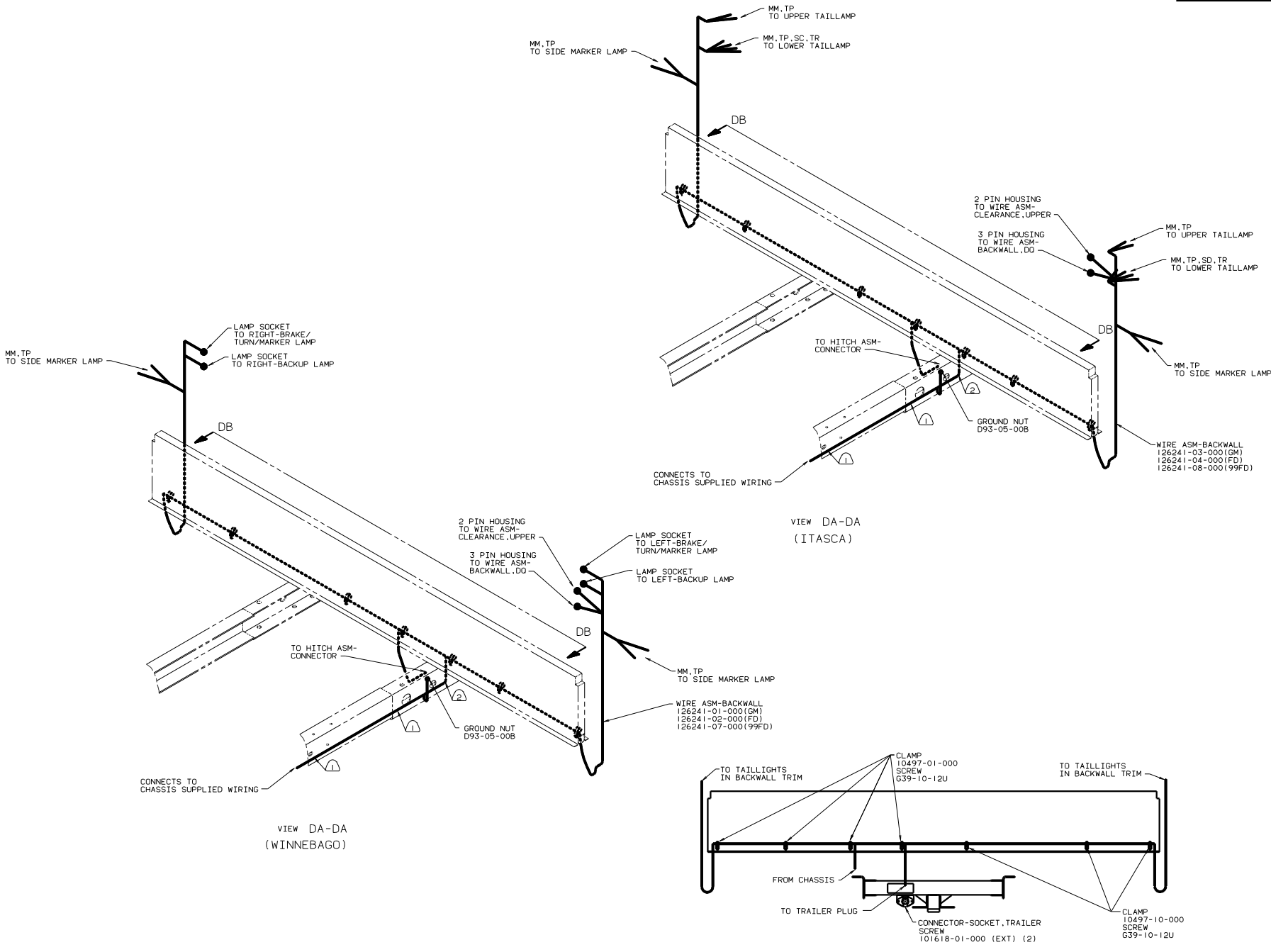
VIEW CC-CC

- ① WITH DELUXE SOUND. (21V)
- ② CUT OFF EXCESS END OF WIRE TIE.
- ③ CONNECT CABLES TO COACH SIDE OF BATTERY DISCONNECT WHEN BATTERY DISCONNECT IS USED.
- ④ FOR ADDITIONAL INFORMATION SEE WIRING INSTALATION FRONT END.
- ⑤ COVER WITH CONDUIT 41953-10-000 AND 41953-11-000 AS REQUIRED.
- ⑥ SUPPLIED WITH CHASSIS.
- ⑦ LAY BATTERY AND GENERATOR CABLES TO THIS DIMENSION FROM END OF CROSSMEMBER TO START INSTALLATION.

NOTES:

FOR ELECTRICAL TORQUE SPECIFICATIONS SEE DWG NO. 128783-01-000

99 F & G32T	
TITLE: WIRING INSTL-CHASSIS	
DATE: 11/01/00	REV: 1
SHEET: 3 OF 4	DWG NO: 128873



- ② WIRE TO BE ROUTED ON BACK SIDE OF RISER.
- ① WIRE TIE 8343-02. FASTEN TO FRAME AT LEAST ONCE EVERY 600MM.

FOR ELECTRICAL TORQUE SPECIFICATIONS SEE DWG NO. 128783-01-000

99 G32T ONLY	
TITLE: WIRING INSTL-CHASSIS	REV: 1
NO. OF SHEETS: 4	SHEET: 4 OF 4
DWG NO. 128873	REV. 1