



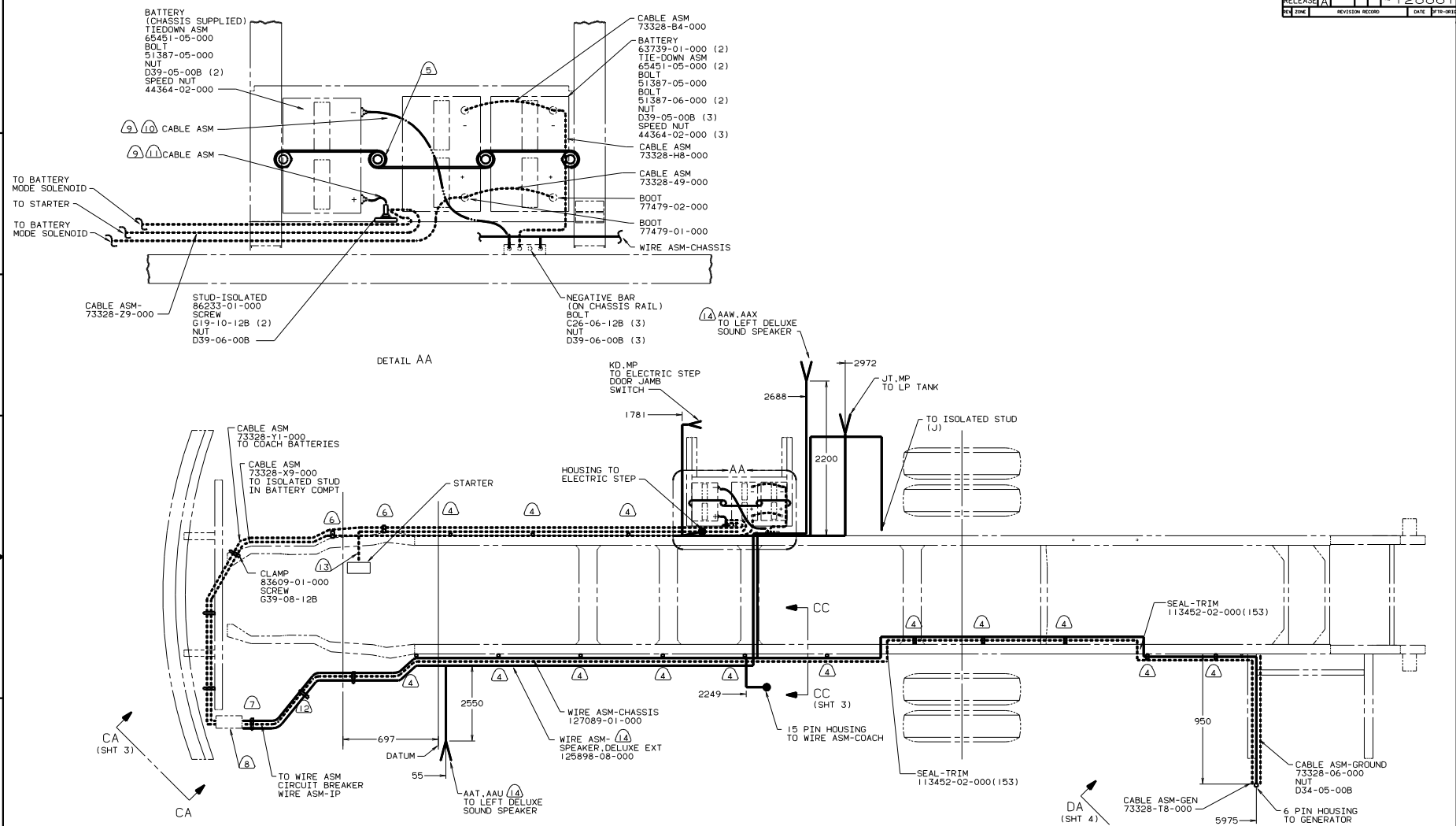
DANGER

Danger of electrical shock, burns or death. Always remove all power sources before attempting any repair, service or diagnostic work. Power can be present from shore power, generator, inverter or battery. All power sources must be disabled and secured before performing any service.



CAUTION

If you lack the skills, tools or equipment to perform diagnostic or repair work leave such work to an authorized Winnebago Industries dealer or other qualified shop.

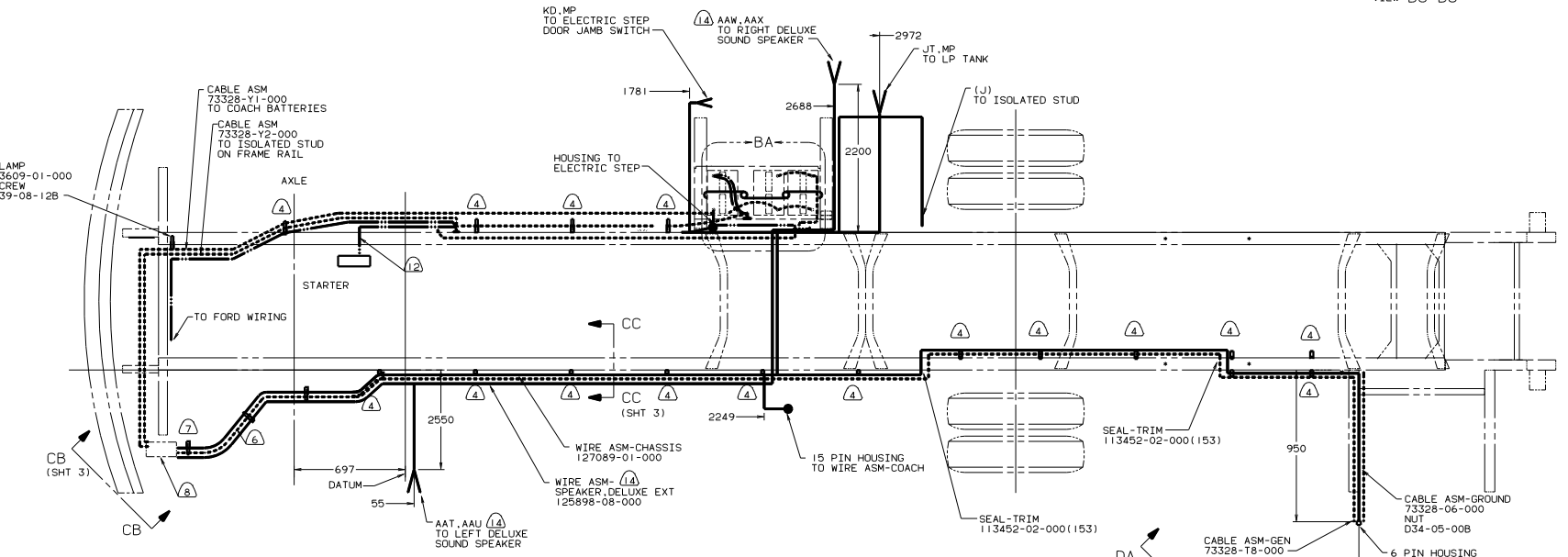
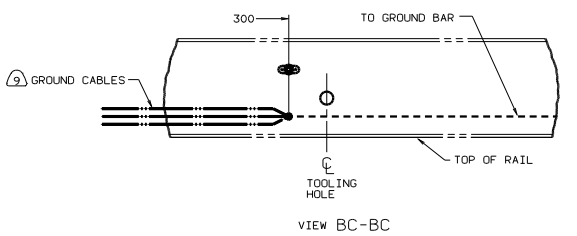
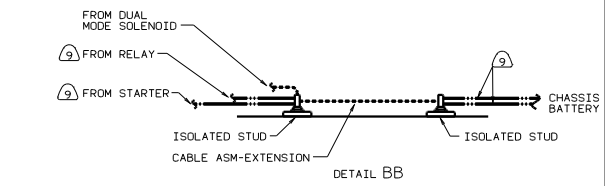
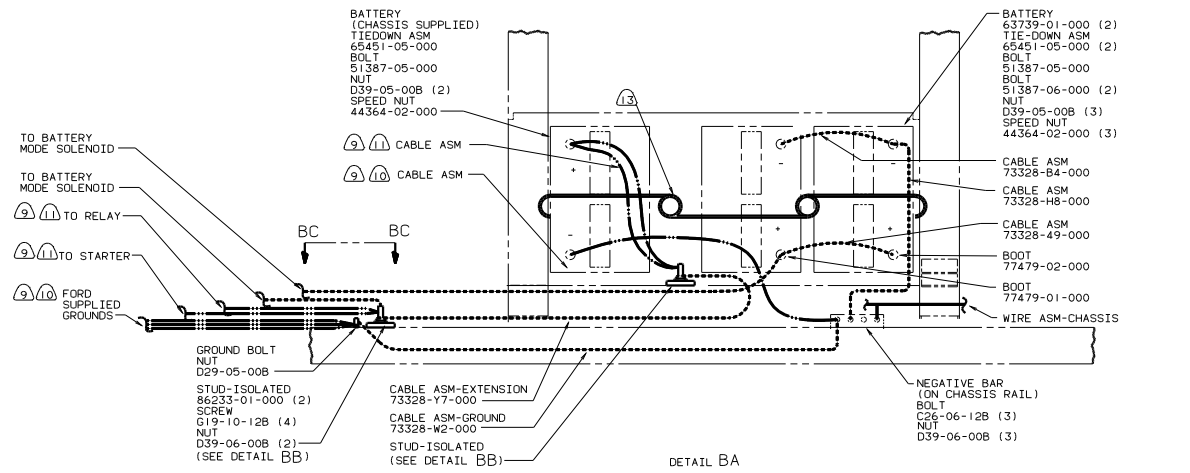


- ④ 21V SOUND SYSTEM-DLX
 - ⑬ BATTERY CABLES MUST BE INSTALLED TO STARTER MOTOR BEFORE ENGINE WIRING HARNESS AND ROUTED IN SUCH A MANNER AS TO PREVENT AND POSSIBLE DEGRADATION FROM THE EXHAUST SYSTEM.
 - ⑫ COVER WITH CONDUIT 41953-09,-10-11-000 AS REQUIRED
 - ⑪ TRIM CABLE TO 400MM, ADD TERMINAL 8348-01-000.
 - ⑩ TRIM CABLE TO 800MM, ADD TERMINAL 8348-01-000.
 - ⑨ SUPPLIED WITH CHASSIS.
 - ⑧ SEE WIRING INSTL-FRONT END FOR ADDITIONAL INFORMATION.
 - ⑦ CLAMP 83610-01-000, SCREW G11-10-16B.
 - ⑥ WIRE TIE 116673-01-000.
 - ⑤ USE TWO NUTS HERE TO ACCOUNT FOR BATTERY HEIGHT DIFFERENCE.
 - ④ WIRE TIE 8343-02-000. FASTEN AT LEAST ONCE EVERY 600MM.
3. ALL DIMENSIONS ARE FROM DATUM UNLESS OTHERWISE SPECIFIED.
2. SECURE CONDUIT 41953-01-000, 41953-02-000 AND 41953-03-000 OVER ALL WIRES IN CONTACT WITH SHARP EDGES.
1. LEGEND: — WINNEBAGO, - - - CABLE, - - - - CHASSIS SUPPLIED.

FOR ELECTRICAL TORQUE SPECIFICATIONS SEE DWG NO. 128783-01-000

IC0 CHEVY CHASSIS, GAS
 IBI CODE STANDARDS-USA
 265 CODE STANDARDS-CSA

WINNEBAGO		99 F & G30A	
QTY IN	DATE	UNSPECIFIED TOLERANCES ARE:	MATERIAL
CHG#	DATE	WHOLE DIM (M)	FRACTIONAL
REV	DATE	ONE-PLACE (X.X)	
DWG	DATE	TWO-PLACE (X.XX)	
DWG	DATE	THREE-PLACE (X.XXX)	
COMP	DATE	ANGLE	
		THIRD ANGLE PRACTICE	
LAYOUT G29R0	TITLE	WIRING INSTL-CHASSIS	
DWG #	SCALE	NOTE	NO NET SCALE CHANGES
ALL DIMENSIONS ARE IN MILLIMETERS		SHEET	1 OF 4
		REV	1
		DATE	128861



- 11 CUT 14GA WIRE, 6 & 4GA CABLES 500 MM FROM BATTERY TERMINAL, ADD TERMINAL 8331-01-000(2) TO 4GA CABLES AND TERMINAL 8350-01-000(2) TO 14GA WIRES & 6GA CABLES. CONNECT TERMINALS TO ISOLATED STUDS AS SHOWN IN DETAIL N.
- 10 TRIM CABLE TO 500MM, ADD TERMINALS 8348-01-000(2). INCLUDE ALL SMALL GROUND WIRES.
- 9 SUPPLIED WITH CHASSIS.
- 8 SEE WIRING INSTL-FRONT END FOR ADDITIONAL INFORMATION.
- 7 CLAMP 83610-01-000, SCREW G11-10-16B.
- 6 COVER WITH CONDUIT 41953-09,-10,-11-000 AS REQUIRED.
- 5 CUT 4 & 6 GA CABLES 400MM FROM BATTERY TERMINAL, ADD TERMINALS 8331-01-000(2) TO 4 GA AND TERMINAL 8350-01-000(2) TO 6 GA CABLE. CONNECTS ALL 4 TERMINALS TO ISOLATED STUD AS SHOWN IN DETAIL C. DO NOT CUT 14 GA RED WIRE.
- 4 WIRE TIE 8343-02-000, FASTEN AT LEAST ONCE EVERY 600MM.

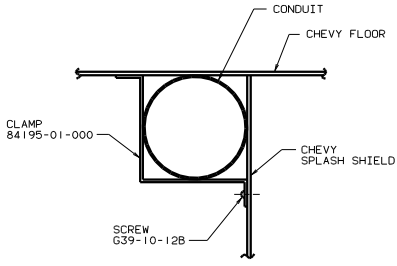
- 14 21V SOUND SYSTEM-DLX
- 13 USE TWO NUTS HERE TO ACCOUNT FOR BATTERY HEIGHT DIFFERENCE.
- 12 BATTERY CABLE MUST BE INSTALLED TO STARTER MOTOR BEFORE ENGINE WIRING HARNESS, AND ROUTED IN SUCH A MANNER AS TO PREVENT ANY POSSIBLE DEGRADATION FROM THE EXHAUST SYSTEM.

1. LEGEND: — WINNEBAGO, - - - - - CABLE, — CHASSIS SUPPLIED.

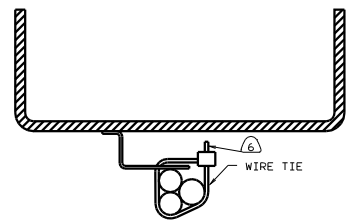
FOR ELECTRICAL TORQUE SPECIFICATIONS SEE DWG NO. 128783-01-000

99 F & G30A
16D FORD CHASSIS GAS
181 CODE STANDARDS-USA
265 CODE STANDARDS-CSA

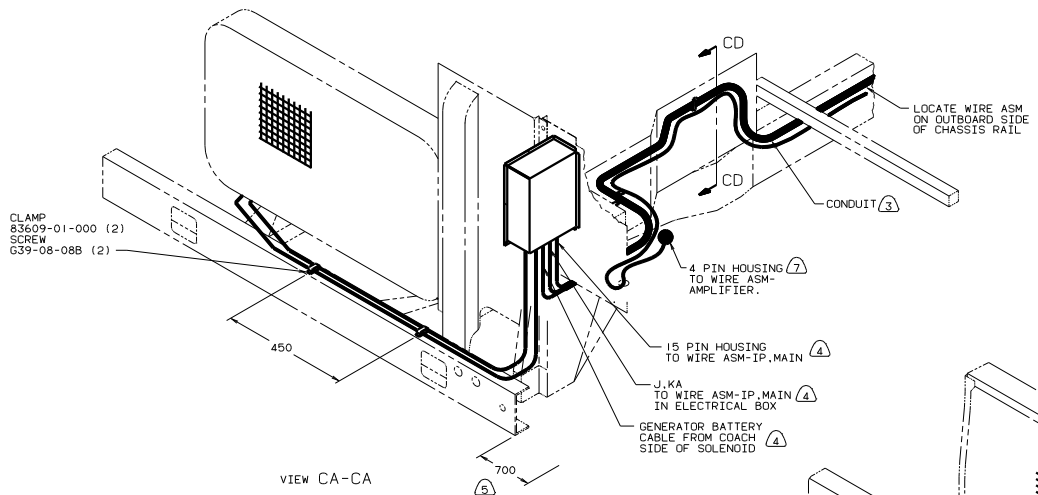
TITLE:	WIRING INSTL-CHASSIS
NO. OF SCALE EDITS:	16
SHEET:	2 OF 4
REV:	16
DWG NO.:	128861



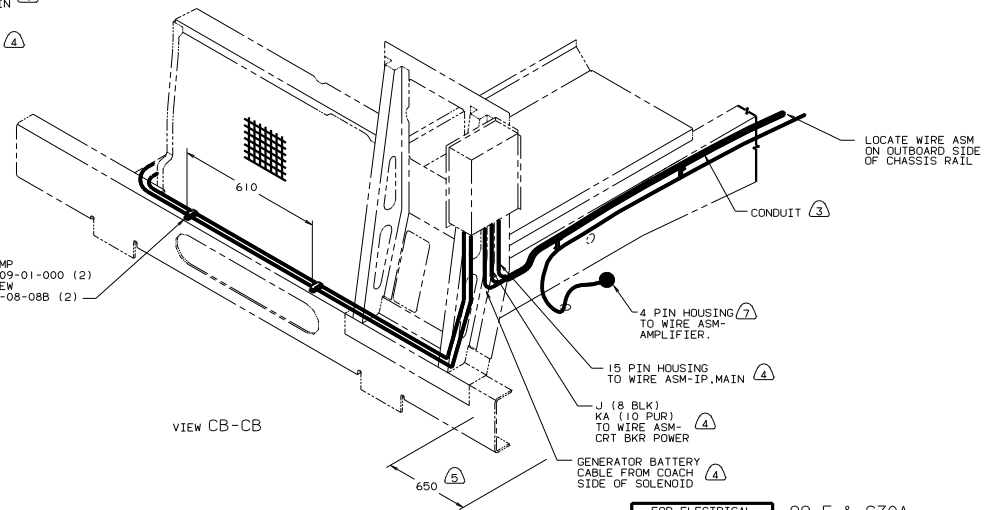
VIEW CD-CD



VIEW CC-CC



VIEW CA-CA

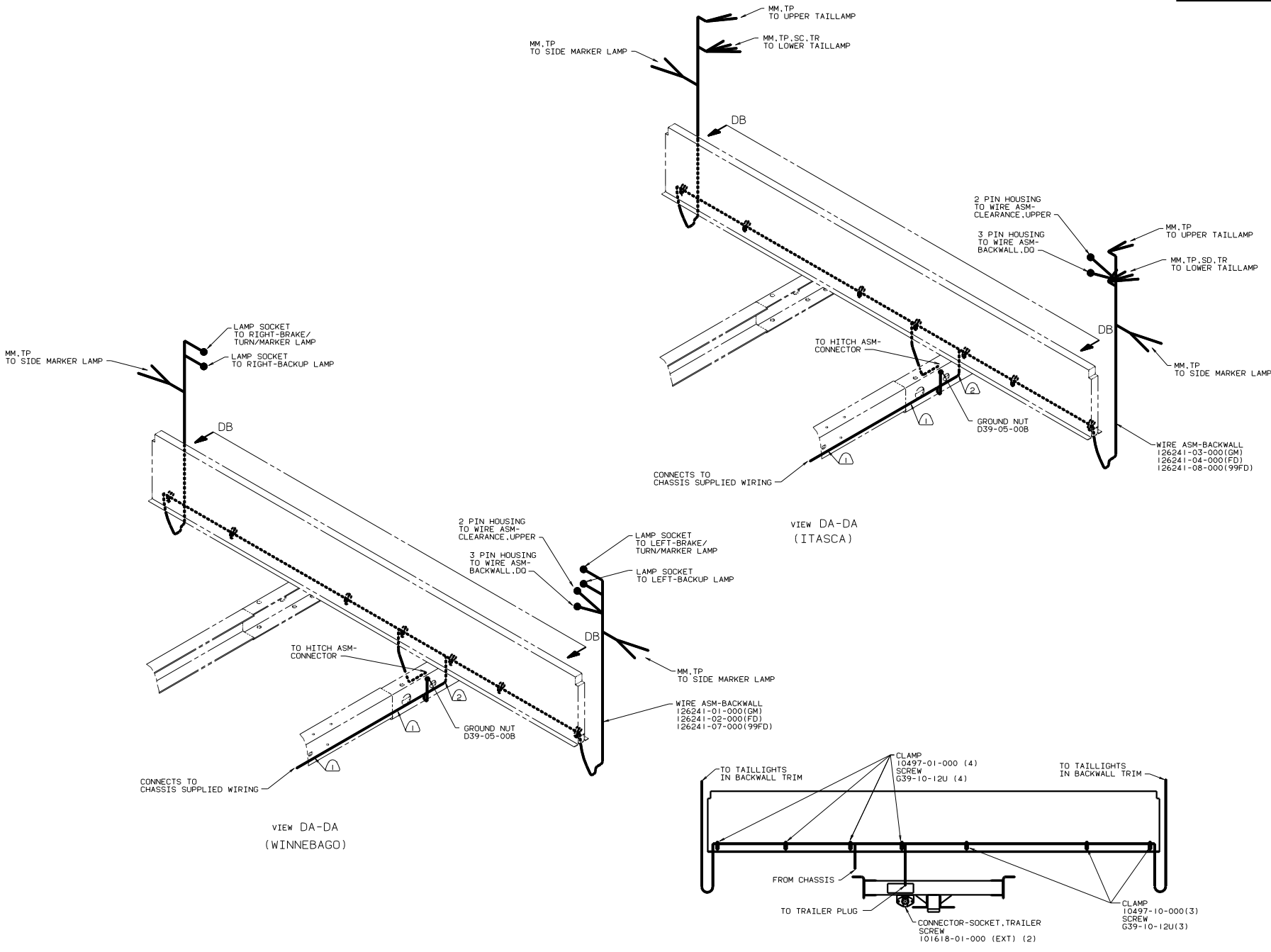


VIEW CB-CB

- (7) 21V SOUND SYSTEM-DLX
 - (6) CUT OFF EXCESS END OF WIRE TIE.
 - (5) LAY BATTERY AND GENERATOR CABLE TO THIS DIMENSION FROM END OF CHASSIS CROSSMEMBER TO START INSTALLATION.
 - (4) SEE WIRING INSTL-FRONT END FOR ADDITIONAL INFORMATION.
 - (3) COVER WITH CONDUIT 41953-09,-10,-11-000 AS REQUIRED.
2. SECURE CONDUIT 41953-01-000, 41953-02-000 AND 41953-03-000 OVER ALL WIRES IN CONTACT WITH SHARP EDGES.
1. LEGEND: — WINNEBAGO, CABLE, — CHASSIS SUPPLIED.

FOR ELECTRICAL TORQUE SPECIFICATIONS SEE DWG NO. 128783-01-000

99 F & G30A	
TITLE	WIRING INSTL-CHASSIS
NO. THIS SCALE DRAWING	1 of 4
SHEET	3 of 4
DWG NO.	128861



- ② WIRE TO BE ROUTED ON BACK SIDE OF RISER.
- ① WIRE TIE 8343-02. FASTEN TO FRAME AT LEAST ONCE EVERY 600MM.

FOR ELECTRICAL TORQUE SPECIFICATIONS SEE DWG NO. 128783-01-000

99 630A ONLY

TITLE	WIRING INSTL-CHASSIS
SHEET	4 OF 4
REV	1
NO	128861