



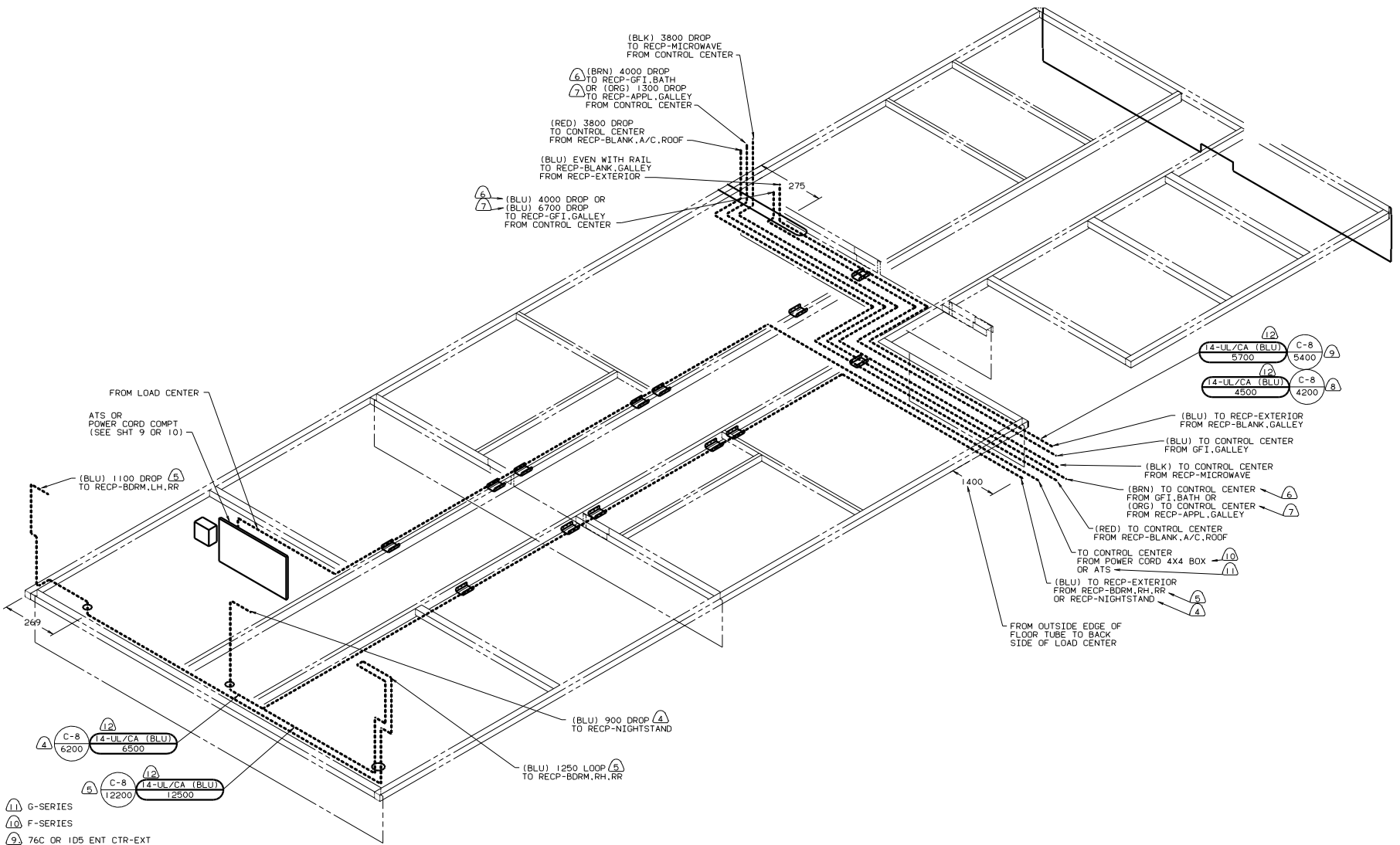
DANGER

Danger of electrical shock, burns or death. Always remove all power sources before attempting any repair, service or diagnostic work. Power can be present from shore power, generator, inverter or battery. All power sources must be disabled and secured before performing any service.



CAUTION

If you lack the skills, tools or equipment to perform diagnostic or repair work leave such work to an authorized Winnebago Industries dealer or other qualified shop.



- (11) G-SERIES
- (10) F-SERIES
- (9) 76C OR 1D5 ENT CTR-EXT
- (8) W/O 76C OR 1D5 ENT CTR-EXT
- (7) 265 CODE STANDARDS-CSA
- (6) 1B1 CODE STANDARDS-USA
- (5) 49X BED-QUEEN, CENTERED
- (4) 45G BED-TWINS

3. WIRES THAT REST ON WIRE TRAYS ARE TO BE TIED DOWN WITH WIRE TIE 8343-02-000.
2. CLAMP TO FLOOR SUPPORT TUBES AS NECESSARY WITH CLAMP 10497-01-000
1. ALL WIRE TO BE CLAMPED WITH CLAMP 10495-01-000 OR CLIP 80734-01-000 EVERY 700, USE SCREW G67-10-12B UNLESS OTHERWISE SPECIFIED.

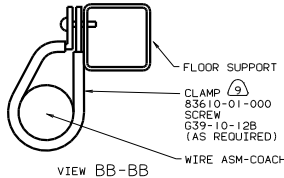
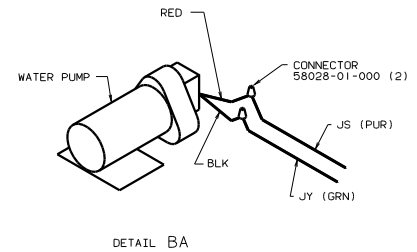
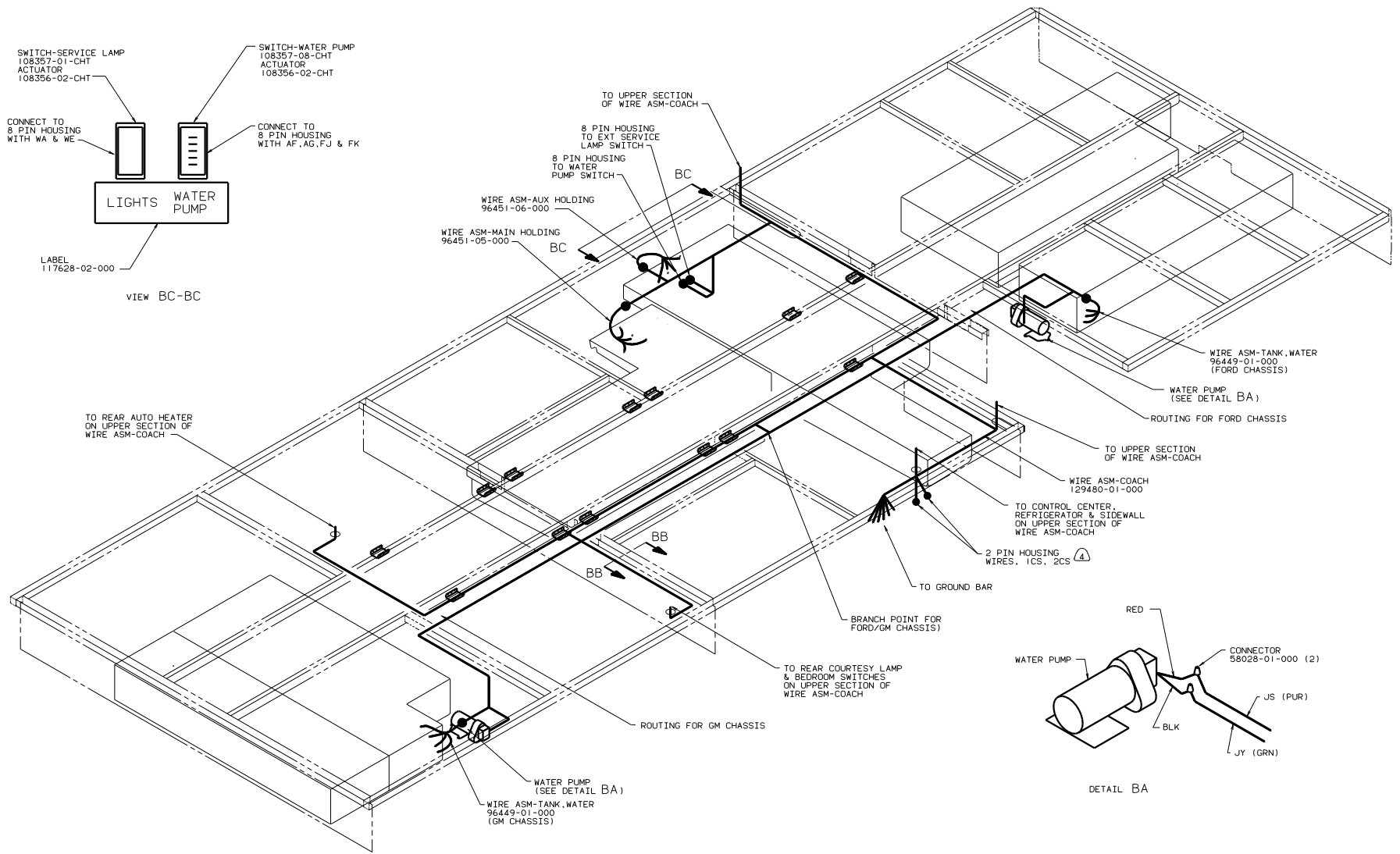
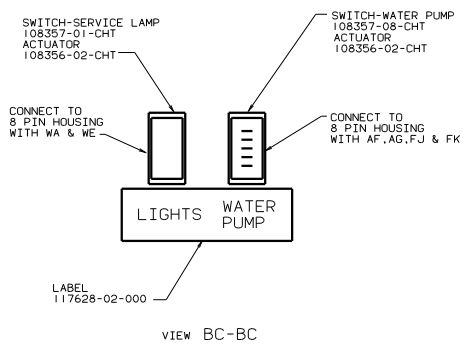
(12) WIRE 14-UL TO BE REPLACED WITH 112593-01-000 WITH 058 EUROPEAN EXPORT PREP PACKAGE-PARTIAL.

058 EUROPEAN EXPORT PREP PACKAGE-PARTIAL
 12D ELECTRICAL SYS-30 AMP
 1B1 CODE STANDARDS-USA
 265 CODE STANDARDS-CSA

FOR ELECTRICAL TORQUE SPECIFICATIONS SEE DWG NO. 128783-01-000

FOR ELECTRICAL CALLOUTS SEE DWG NO. 121339-01-000

DATE		UNDESIGNED TOLERANCES ARE:	99 F & G30A
DATE	DATE	WHOLE OR 1/2"	
DATE	DATE	ONE-PLACE (1/8")	
DATE	DATE	TWO-PLACE (1/16")	
DATE	DATE	MILL	
DATE	DATE	THIRD ANGLE PROJECTION	
TITLE: WIRING INSTL-BODY (110 BL)		REF: 127224-S	
SHEET 1 OF 1	DRAWING NO. 128860		



- (A) TWO 2-PIN HOUSINGS SHALL BE CONNECTED TOGETHER WITHOUT IEG EXPORT ROOF AIR.
3. WIRES THAT REST ON WIRE TRAYS ARE TO BE TIED DOWN WITH WIRE TIE 8343-02-000.
2. CLAMP TO FLOOR SUPPORT TUBES AS NECESSARY WITH CLAMP 10497-01-000
1. ALL WIRE TO BE CLAMPED WITH CLAMP 10495-01-000 OR CLIP 80734-01-000 EVERY 700, USE SCREW G67-10-12B UNLESS OTHERWISE SPECIFIED.

FOR ELECTRICAL TORQUE SPECIFICATIONS SEE DWG NO. 128783-01-000	(X-X)	FOR ELECTRICAL CALLOUTS SEE DWG NO. 121339-01-000
--	-------	---

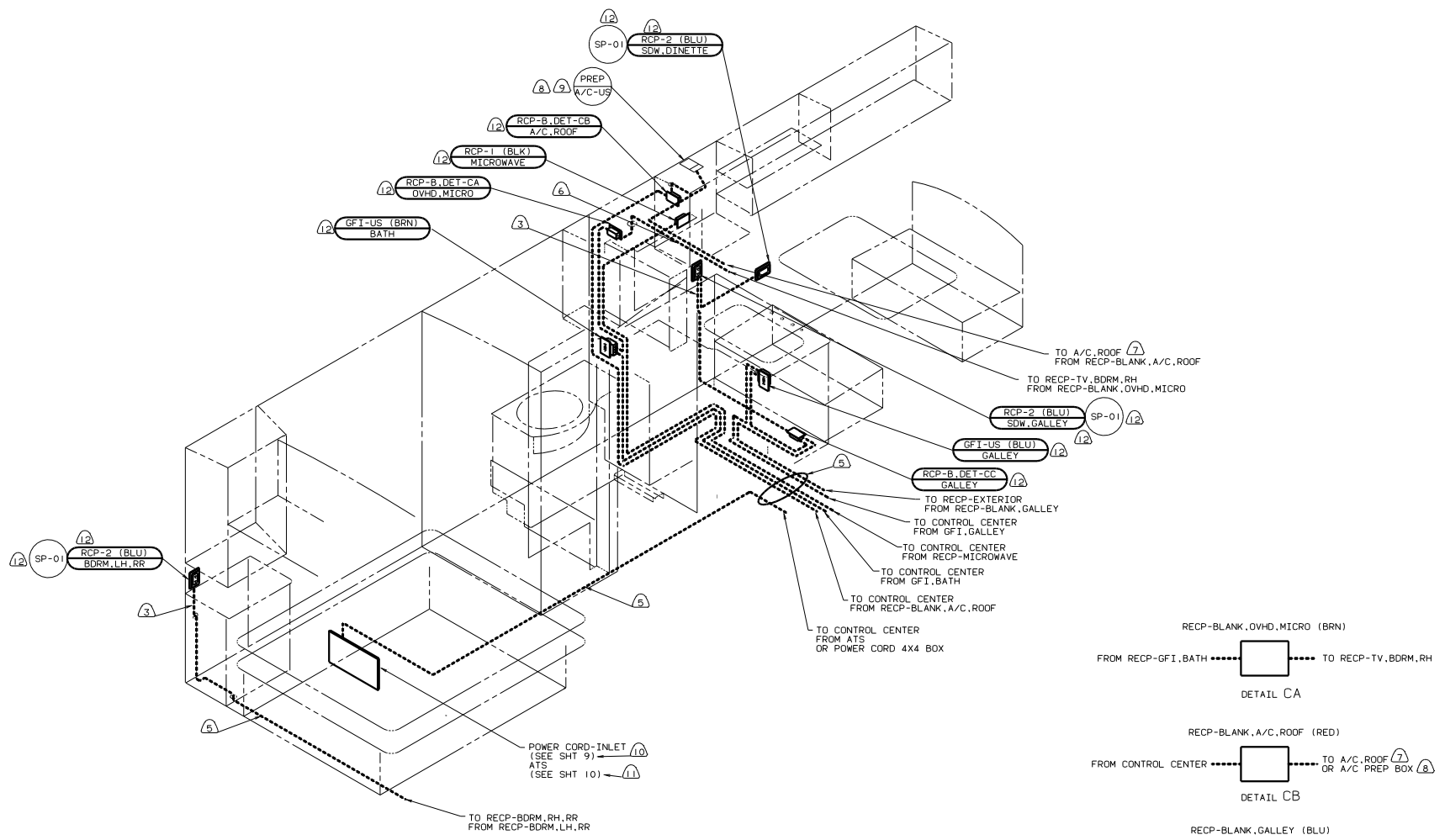
99 F & G30A
058 EUROPEAN EXPORT PREP PACKAGE-PARTIAL
IB1 CODE STANDARDS-USA
265 CODE STANDARDS-CSA

TITLE: WIRING INSTL-BODY (12V BL)

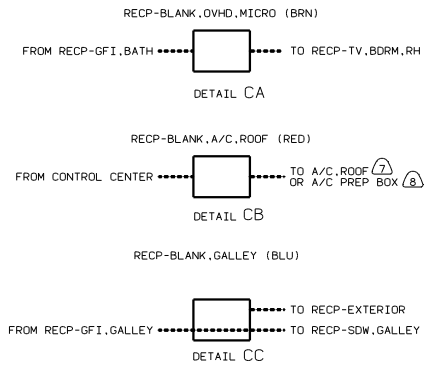
NO. OF SHEETS: 18

SHEET: 2 OF 18

DWG NO: 128860



49X BED-QUEEN, CENTERED



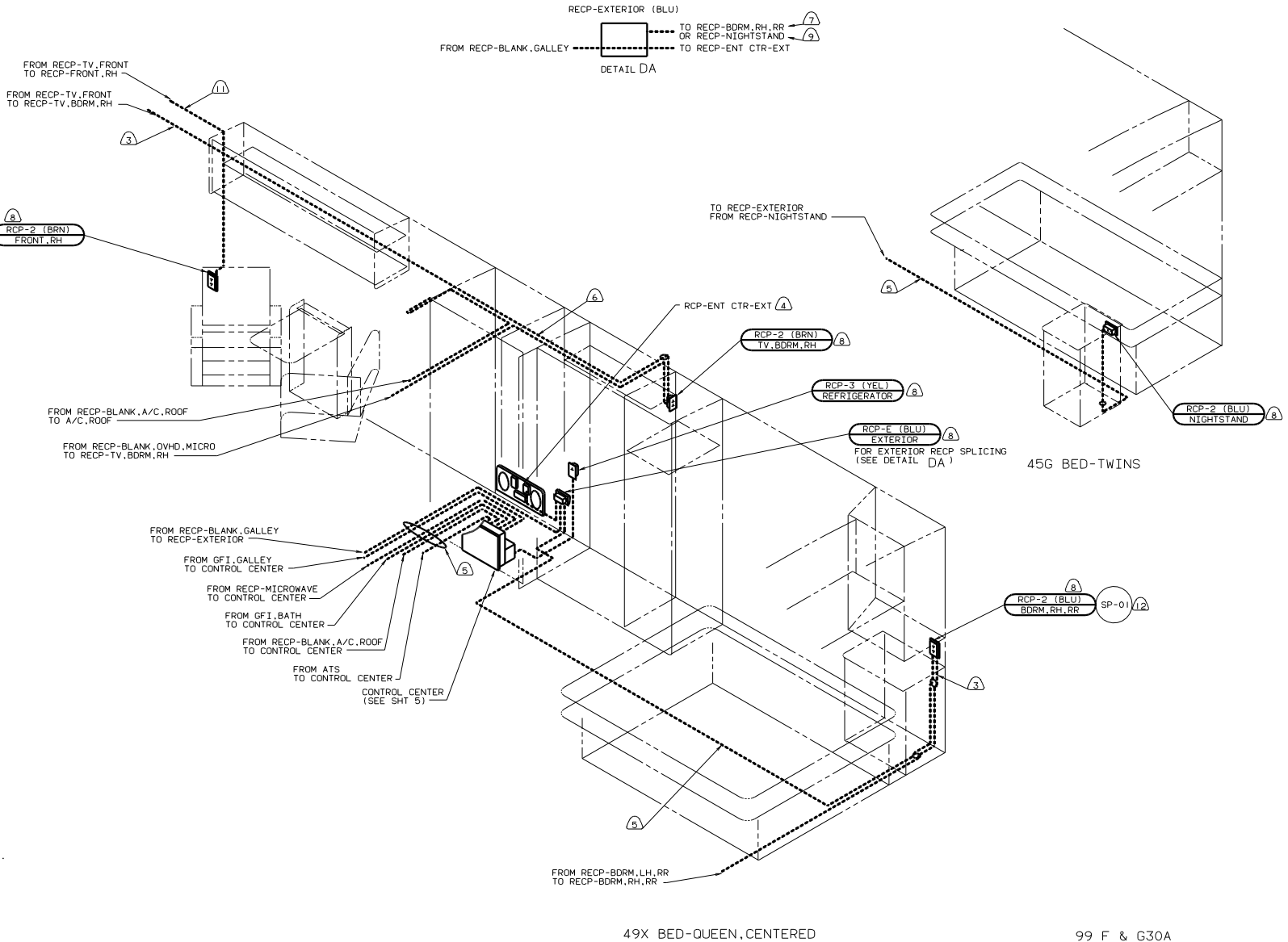
- (12) NOT USED WITH 058 FEATURE.
 - (11) G-SERIES UNITS.
 - (10) F-SERIES UNITS.
 - (9) COVER GROUND WIRE WITH TUBING 8041-02-000.
 - (8) WITHOUT 250 A/C, ROOF-ONE 14,800
 - (7) 250 A/C, ROOF-ONE 14,800
 - (6) WIRE IN ROOF.
 - (5) WIRE ROUTED BELOW FLOOR. CLAMP TO FLOOR AS NECESSARY WITH CLAMP 10497-01-000.
 - (4) SEE GENERATOR INSTL FOR ADDITIONAL INFORMATION.
 - (3) WIRE ROUTED THRU SIDEWALL.
2. ALL WIRES ARE TO BE CLAMPED WITH CLAMP 10497-05-000 WITHIN 200 OF OUTLET BOXES. USE SCREW G67-10-12B.
1. ALL WIRE TO BE CLAMPED WITH CLAMP 10495-01-000 OR CLIP 80734-01-000 EVERY 700. USE SCREW G67-10-12B UNLESS OTHERWISE SPECIFIED.

FOR ELECTRICAL TORQUE SPECIFICATIONS SEE DWG NO. 128783-01-000

FOR ELECTRICAL CALLOUTS SEE DWG NO. 121339-01-000

99 F & G30A
058 EUROPEAN EXPORT PREP PACKAGE-PARTIAL
12D ELECTRICAL SYS-30 AMP
IB1 CODE STANDARD-USA

WIRING INSTL-BODY (110130US)
SHEET 3 OF 18



- ① WIRE IN SIDEWALL.
- ② 250 A/C ROOF-ONE 14,800
- ③ 45G BED-TWINS
- ④ NOT USED WITH 058 FEATURE.
- ⑤ 49X BED-QUEEN, CENTERED
- ⑥ WIRE IN ROOF.
- ⑦ WIRE ROUTED BELOW FLOOR.
- ⑧ 76C ENTERTAINMENT CTR-EXT
- ⑨ WIRE ROUTED THRU SIDEWALL.

2. ALL WIRES ARE TO BE CLAMPED WITH CLAMP 10497-05-000 WITHIN 200 OF OUTLET BOXES. USE SCREW G67-10-12B.

1. ALL WIRE TO BE CLAMPED WITH CLAMP 10495-01-000 OR CLIP 80734-01-000 EVERY 700. USE SCREW G67-10-12B UNLESS OTHERWISE SPECIFIED.

NOTES:

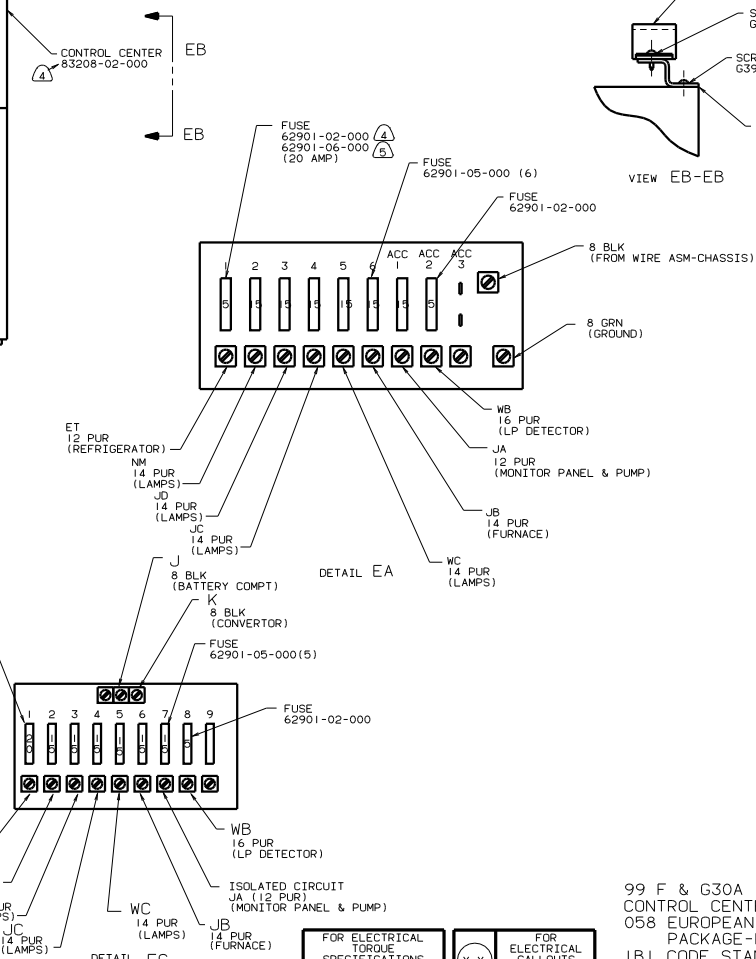
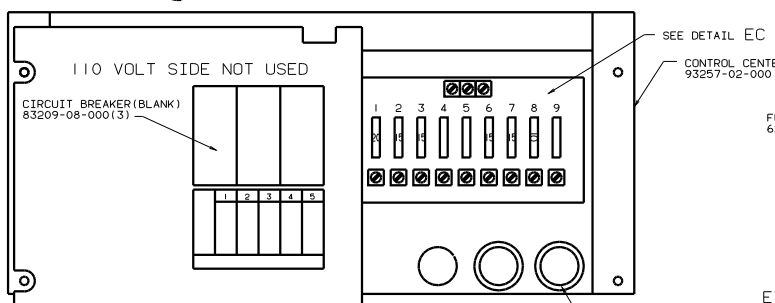
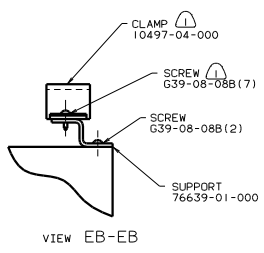
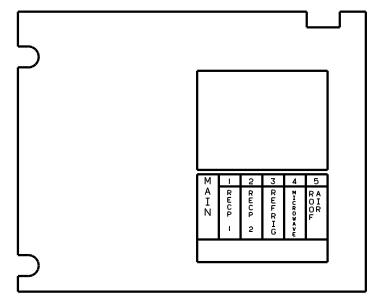
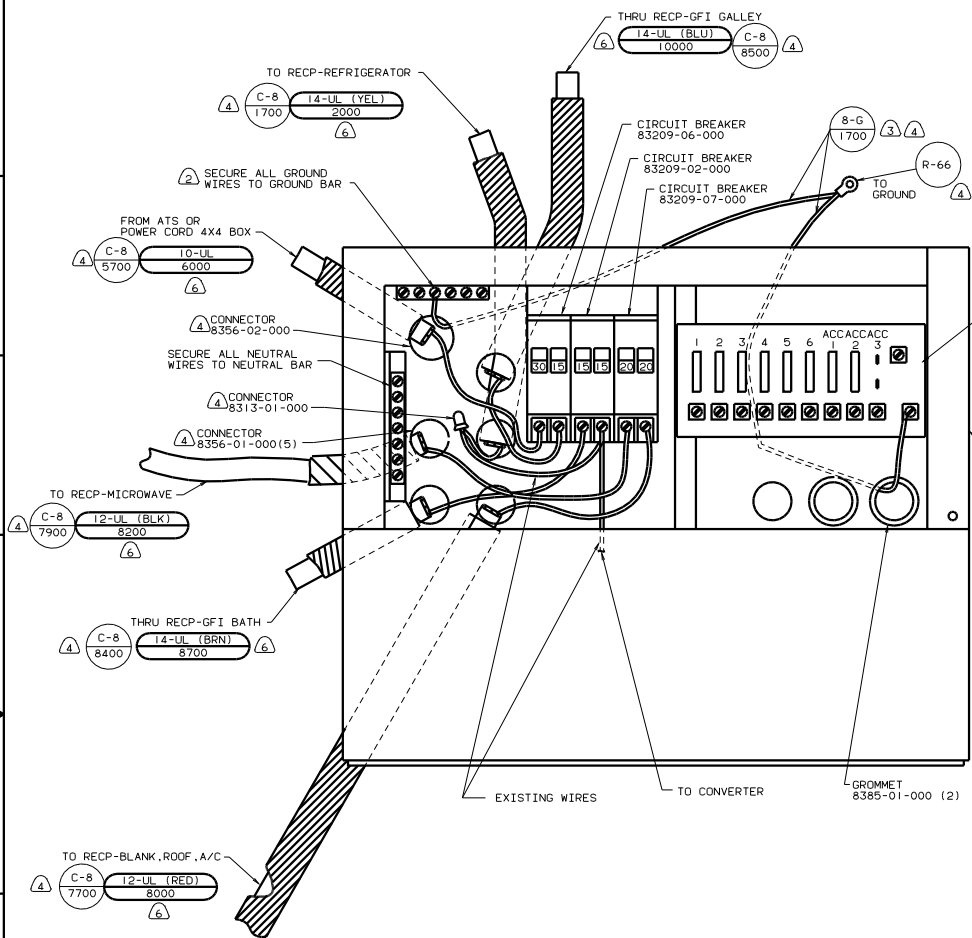
FOR ELECTRICAL TORQUE SPECIFICATIONS SEE DWG NO. 128783-01-000

FOR ELECTRICAL CALLOUTS SEE DWG NO. 121339-01-000



99 F & G30A
 12D ELECTRICAL SYS-30 AMP
 1B1 CODE STANDARD-USA
 058 EUROPEAN EXPORT PREP PACKAGE-PARTIAL

TITLE		WIRING INSTL-BODY(11OR30US)	
NO. THIS SHEET CONTAINS	TOTAL SHEETS	DWG NO.	128860
SHEET 4	OF 18	REV	1.0

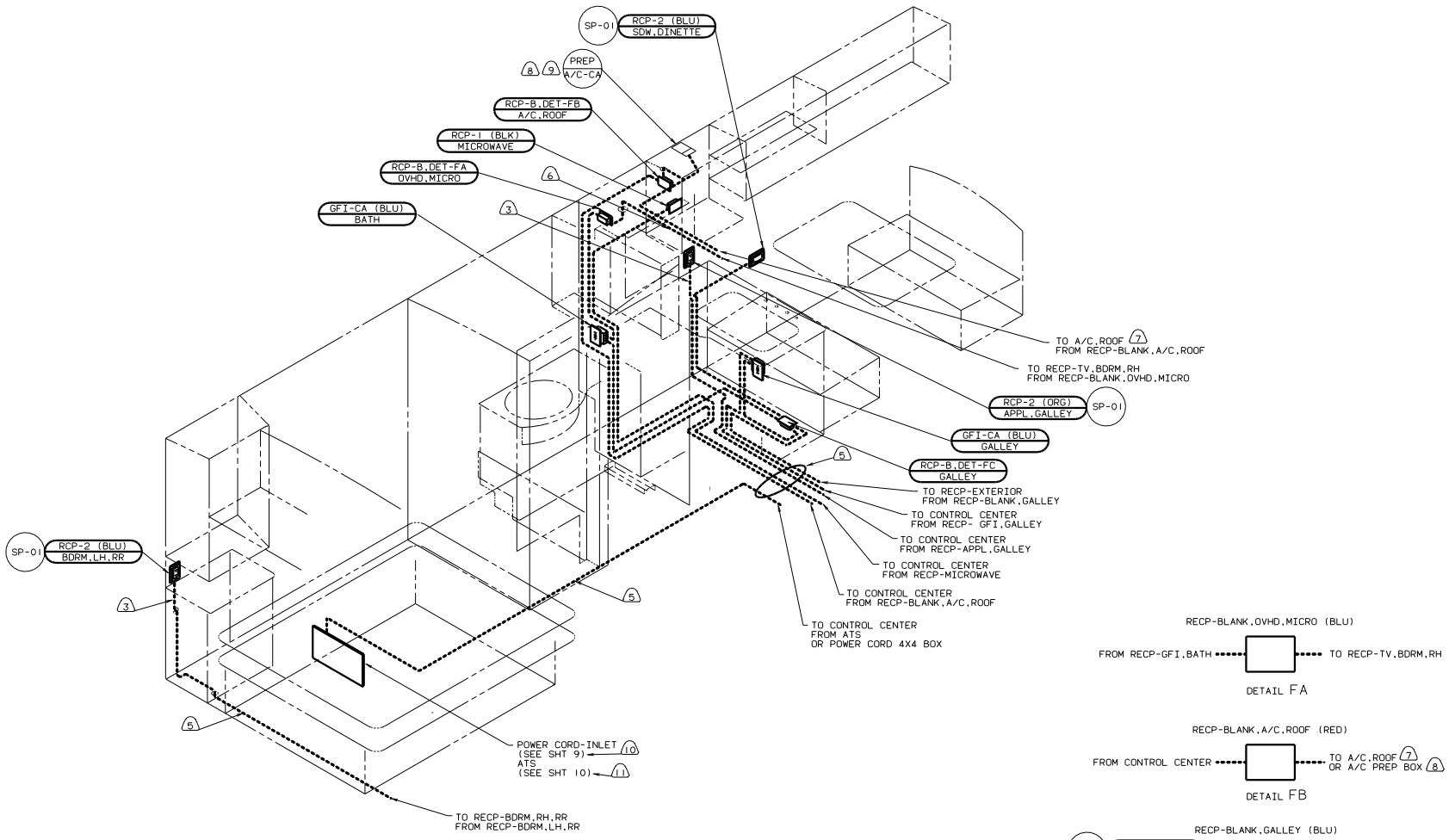


- 6 WIRE 10-UL TO BE REPLACED WITH 112593-02-000. WIRE 14-UL AND 12-UL TO BE REPLACED WITH 112593-01-000 WITH 058 FEATURE.
- 5 USE WITH 058.
- 4 NOT USED WITH 058.
- 3 WIRE W/O TERMINALS TO BE STRIPPED 10MM AND SOLDER DIPPED.
- 2 ALL GROUND WIRES TO BE COVERED WITH TUBING 8041-02-000.
- 1 FASTEN ALL WIRES TO SUPPORT. USE WITH ONE SCREW PER CLAMP.

FOR ELECTRICAL TORQUE SPECIFICATIONS SEE DWG NO. 128783-01-000	(X-X)	FOR ELECTRICAL CALLOUTS SEE DWG NO. 121-339-01-000
--	-------	--

99 F & G30A
CONTROL CENTER
058 EUROPEAN EXPORT PREP
PACKAGE-PARTIAL
IBI CODE STANDARDS-USA

TITLE	WIRING INSTL-BODY(30 CC US)
DATE	10/21/84
SHEET	5 OF 18
REV	1
FIG NO	128860



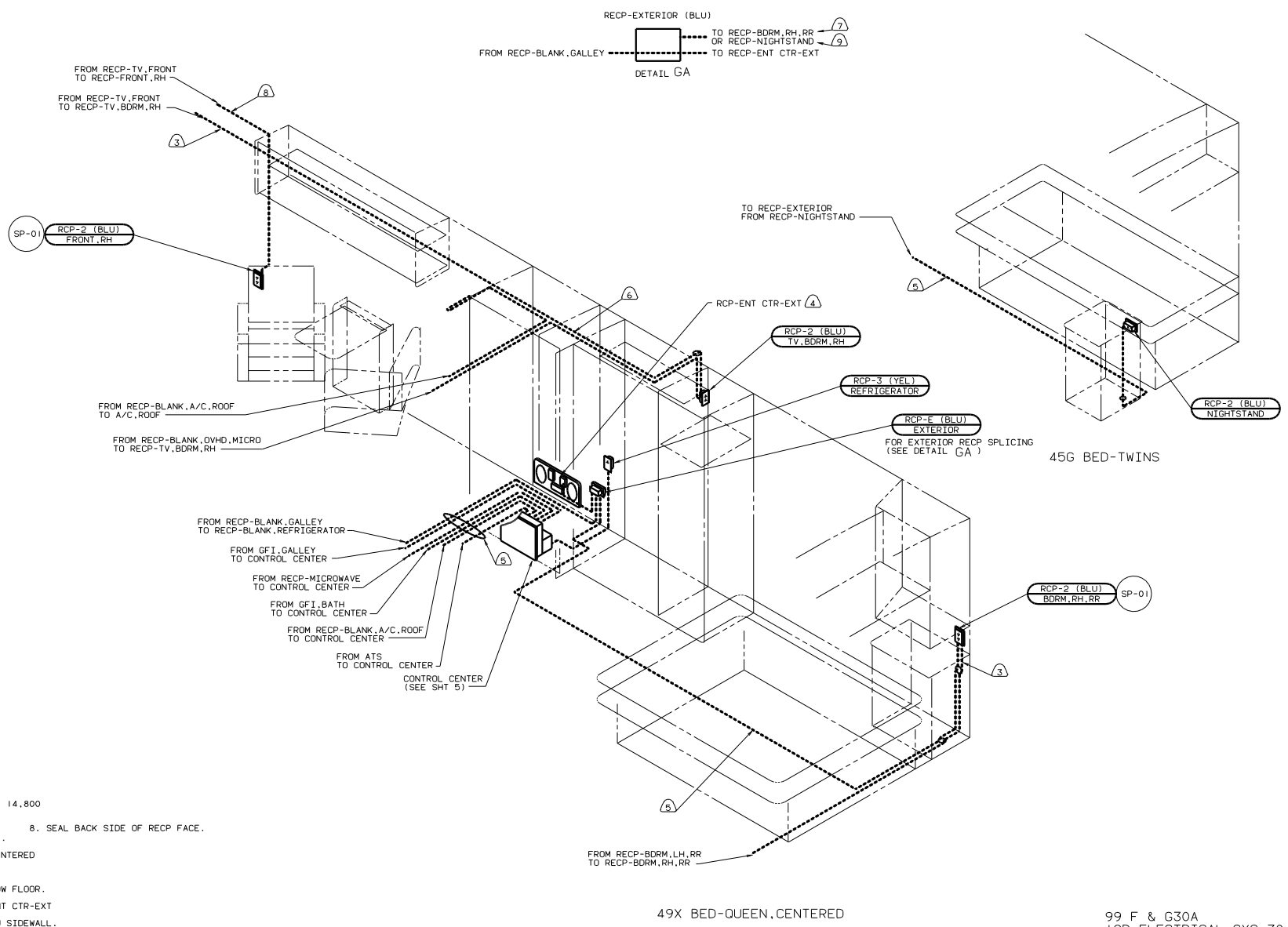
49X BED-QUEEN, CENTERED

- (11) G-SERIES UNITS.
 - (10) F-SERIES UNITS.
 - (9) COVER GROUND WIRE WITH TUBING 8041-02-000.
 - (8) WITHOUT 250 A/C, ROOF-ONE 14,800
 - (7) 250 A/C, ROOF-ONE 14,800
 - (6) WIRE IN ROOF.
 - (5) WIRE ROUTED BELOW FLOOR. CLAMP TO FLOOR AS NECESSARY WITH CLAMP 10497-01-000.
 - (4) SEE GENERATOR INSTL FOR ADDITIONAL INFORMATION.
 - (3) WIRE ROUTED THRU SIDEWALL.
2. ALL WIRES ARE TO BE CLAMPED WITH CLAMP 10497-05-000 WITHIN 200 OF OUTLET BOXES. USE SCREW G67-10-12B.
1. ALL WIRE TO BE CLAMPED WITH CLAMP 10495-01-000 OR CLIP 80734-01-000 EVERY 700. USE SCREW G67-10-12B UNLESS OTHERWISE SPECIFIED.

FOR ELECTRICAL TORQUE SPECIFICATIONS SEE DWG NO. 128783-01-000

FOR ELECTRICAL CALLOUTS SEE DWG NO. 121339-01-000

99 F & G30A
12D ELECTRICAL SYS-30 AMP
265 CODE STANDARD-CSA



- 10 250 A/C ROOF-ONE 14,800
 - 9 45G BED-TWINS
 - 8 8. SEAL BACK SIDE OF RECP FACE.
 - 8 WIRE IN SIDEWALL.
 - 7 49X BED-QUEEN, CENTERED
 - 6 WIRE IN ROOF.
 - 5 WIRE ROUTED BELOW FLOOR.
 - 4 76C ENTERTAINMENT CTR-EXT
 - 3 WIRE ROUTED THRU SIDEWALL.
2. ALL WIRES ARE TO BE CLAMPED WITH CLAMP 10497-05-000 WITHIN 200 OF OUTLET BOXES. USE SCREW G67-10-12B.
1. ALL WIRE TO BE CLAMPED WITH CLAMP 10495-01-000 OR CLIP 80734-01-000 EVERY 700. USE SCREW G67-10-12B UNLESS OTHERWISE SPECIFIED.

NOTES:

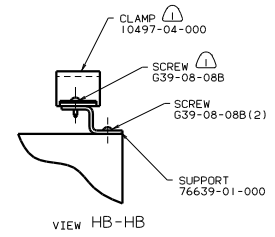
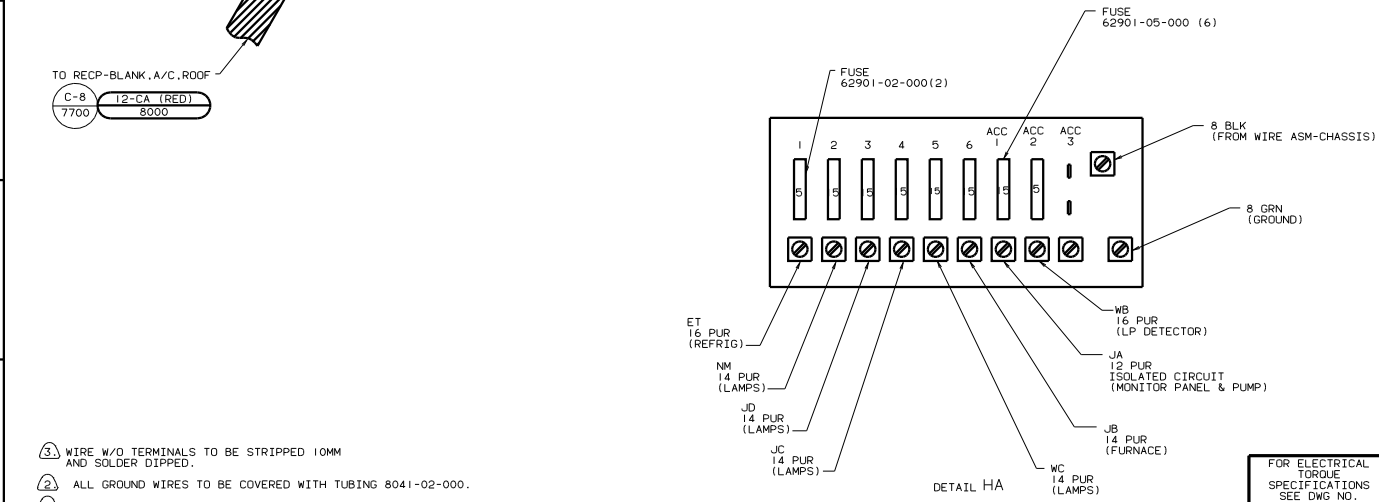
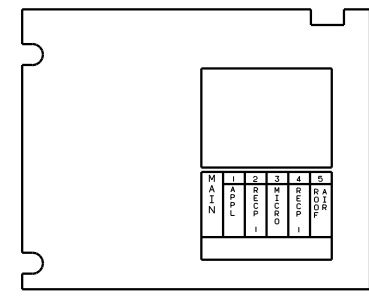
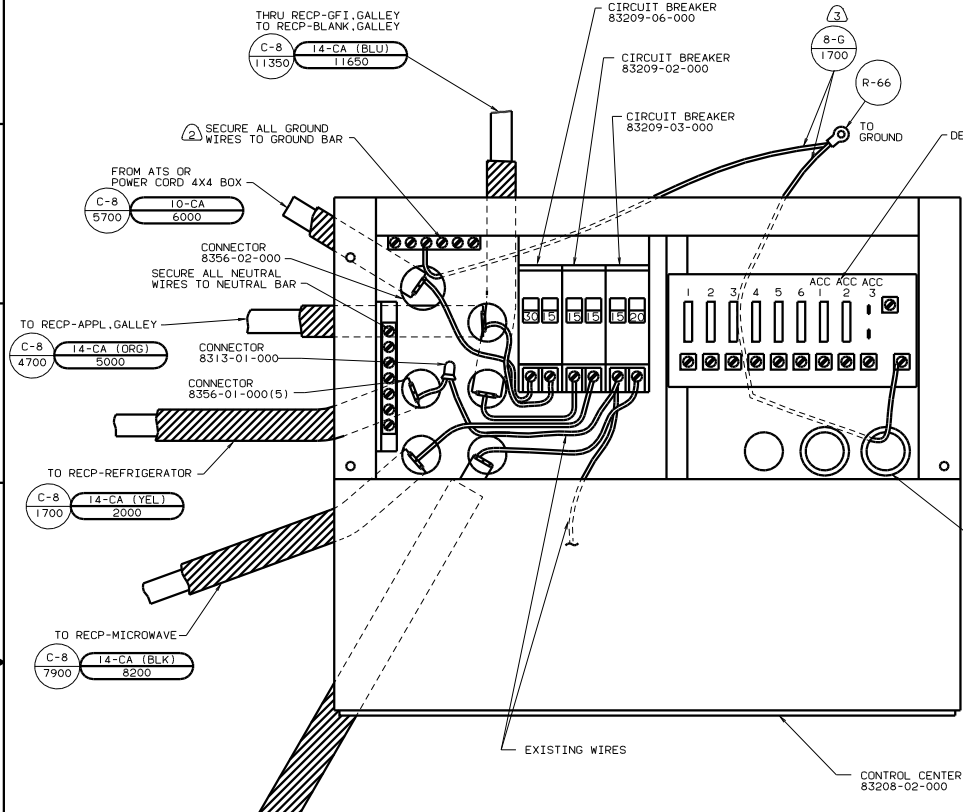
FOR ELECTRICAL TORQUE SPECIFICATIONS SEE DWG NO. 128783-01-000

FOR ELECTRICAL CALLOUTS SEE DWG NO. 121339-01-000



99 F & G30A
12D ELECTRICAL SYS-30 AMP
265 CODE STANDARD-CSA

TITLE: WIRING INSTL-BODY(110R30CAN)	
NO. OF SHEETS: 18	SHEET NO. 7
DATE: 11/11/05	1E
128860	



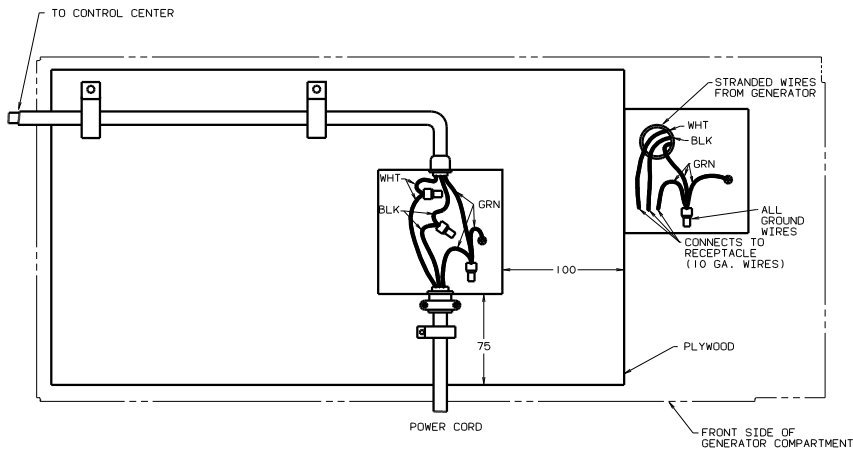
- NOTES:
- ③ WIRE W/O TERMINALS TO BE STRIPPED 10MM AND SOLDER DIPPED.
 - ② ALL GROUND WIRES TO BE COVERED WITH TUBING 8041-02-000.
 - ① FASTEN ALL WIRES TO SUPPORT. USE ONE SCREW PER CLAMP.

FOR ELECTRICAL TORQUE SPECIFICATIONS SEE DWG NO. 128783-01-000

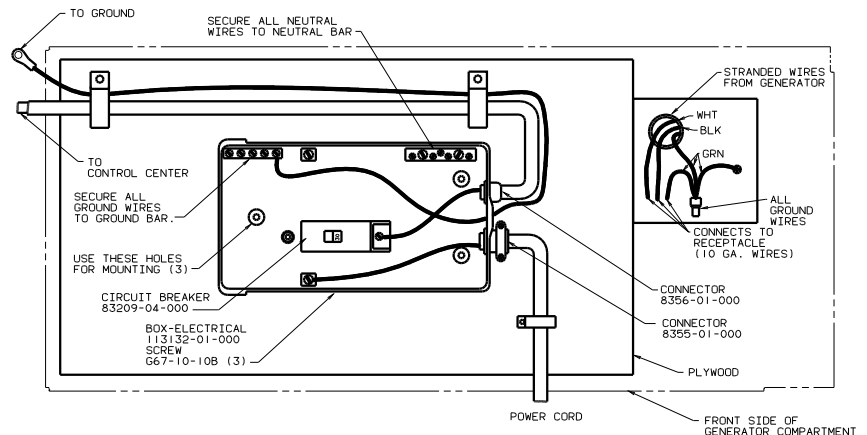
FOR ELECTRICAL CALLOUTS SEE DWG NO. 121339-01-000

99 F & G30A CONTROL CENTER 265 CODE STANDARDS-CSA

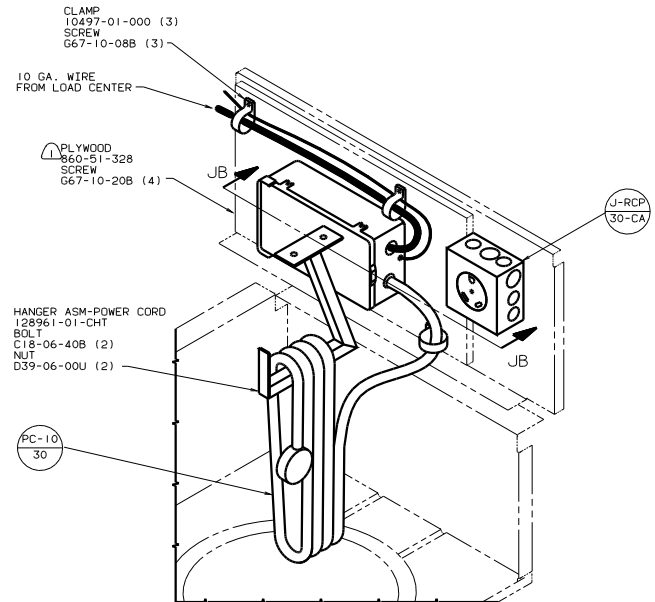
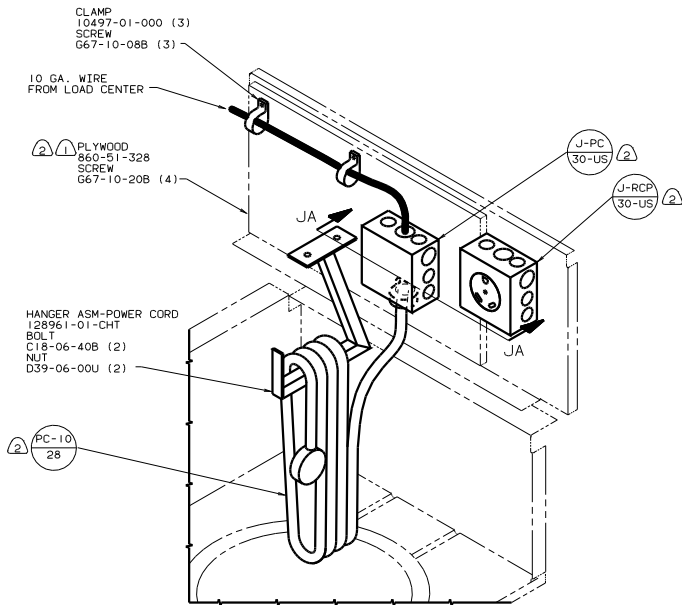
FILE	128860	REV	1
WIRING INSTL-BODY(30 CC CAN)		DATE	1/1/00
SHEET	8 OF 18	FIG	1E
		DWG NO	128860



VIEW JA-JA (SHOWN WITH COVERS REMOVED)



VIEW JB-JB (SHOWN WITH COVERS REMOVED)



- (2) NOT USED WITH 058 FEATURE.
- (1) PAINT EXPOSED SURFACES BLACK 106112-01-000.

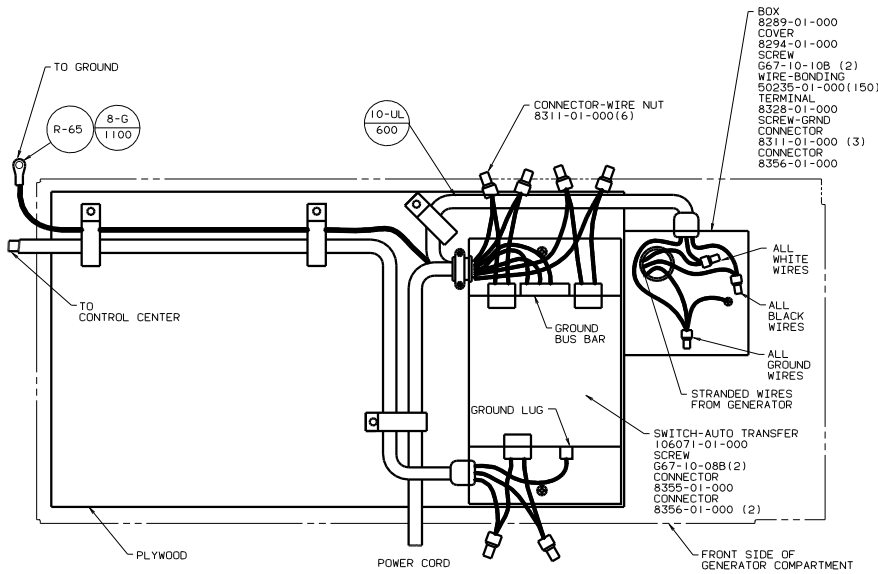
058 EUROPEAN EXPORT PREP PACKAGE-PARTIAL
IBI CODE STANDARDS-USA

265 CODE STANDARDS-CSA

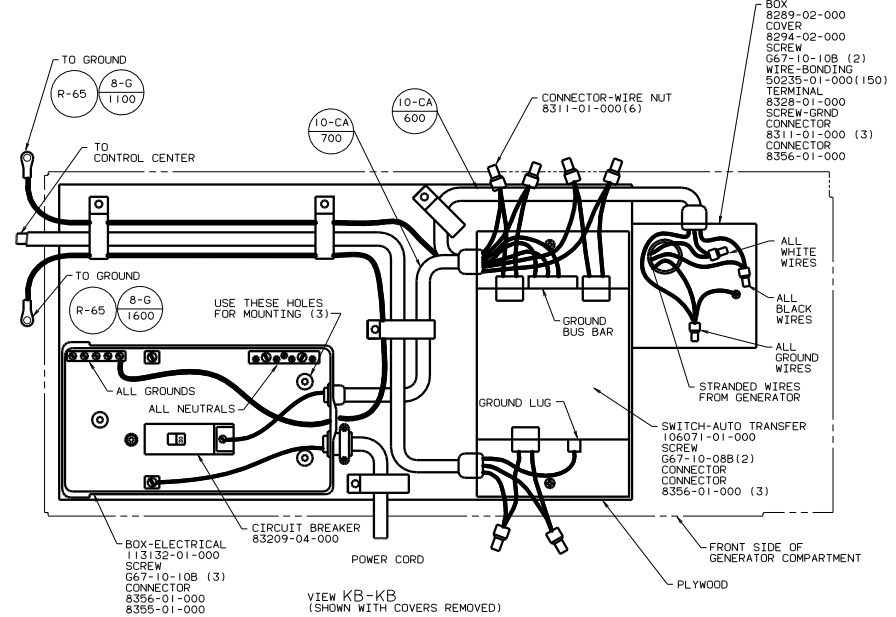
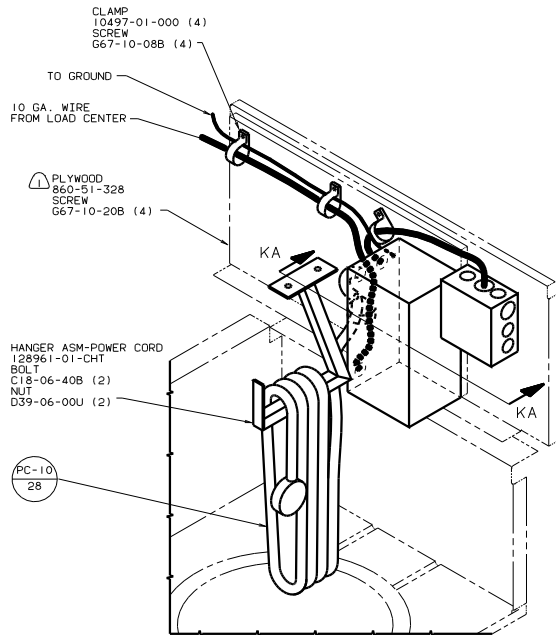
FOR ELECTRICAL TORQUE SPECIFICATIONS SEE DWG NO. 128783-01-000	X-X	FOR ELECTRICAL CALLOUTS SEE DWG NO. 121339-01-000
--	-----	---

99 F30A ONLY
POWER CORD INLET

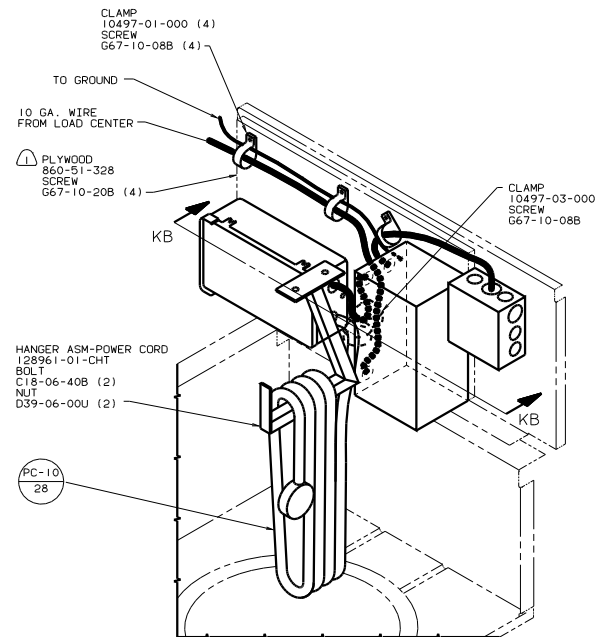
TITLE: WIRING INSTL-BODY(PCI)	DWG NO: 128860
30 THE TOTAL NUMBER OF SHEETS: 9 OF 18	1/E



VIEW KA-KA
(SHOWN WITH COVERS REMOVED)



VIEW KB-KB
(SHOWN WITH COVERS REMOVED)



PAINT EXPOSED SURFACES BLACK 106112-01-000.

IB1 CODE STANDARDS-USA

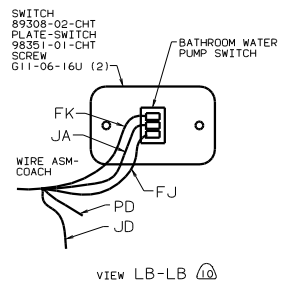
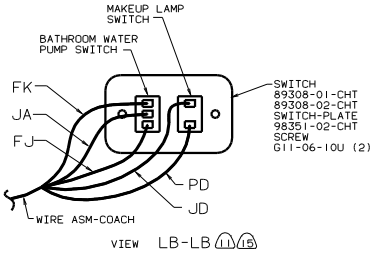
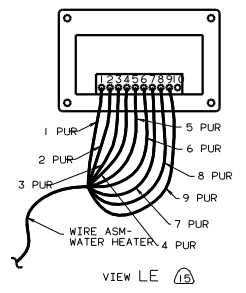
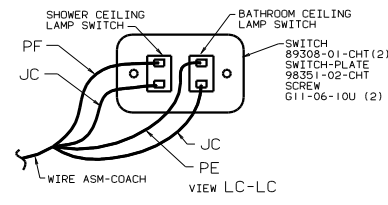
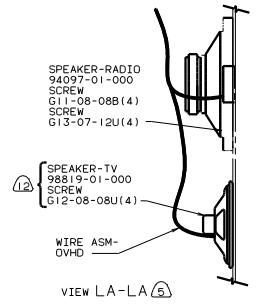
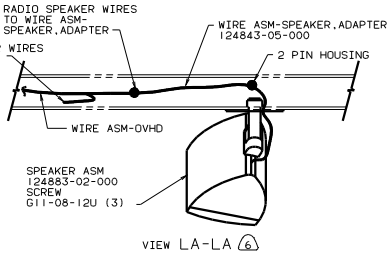
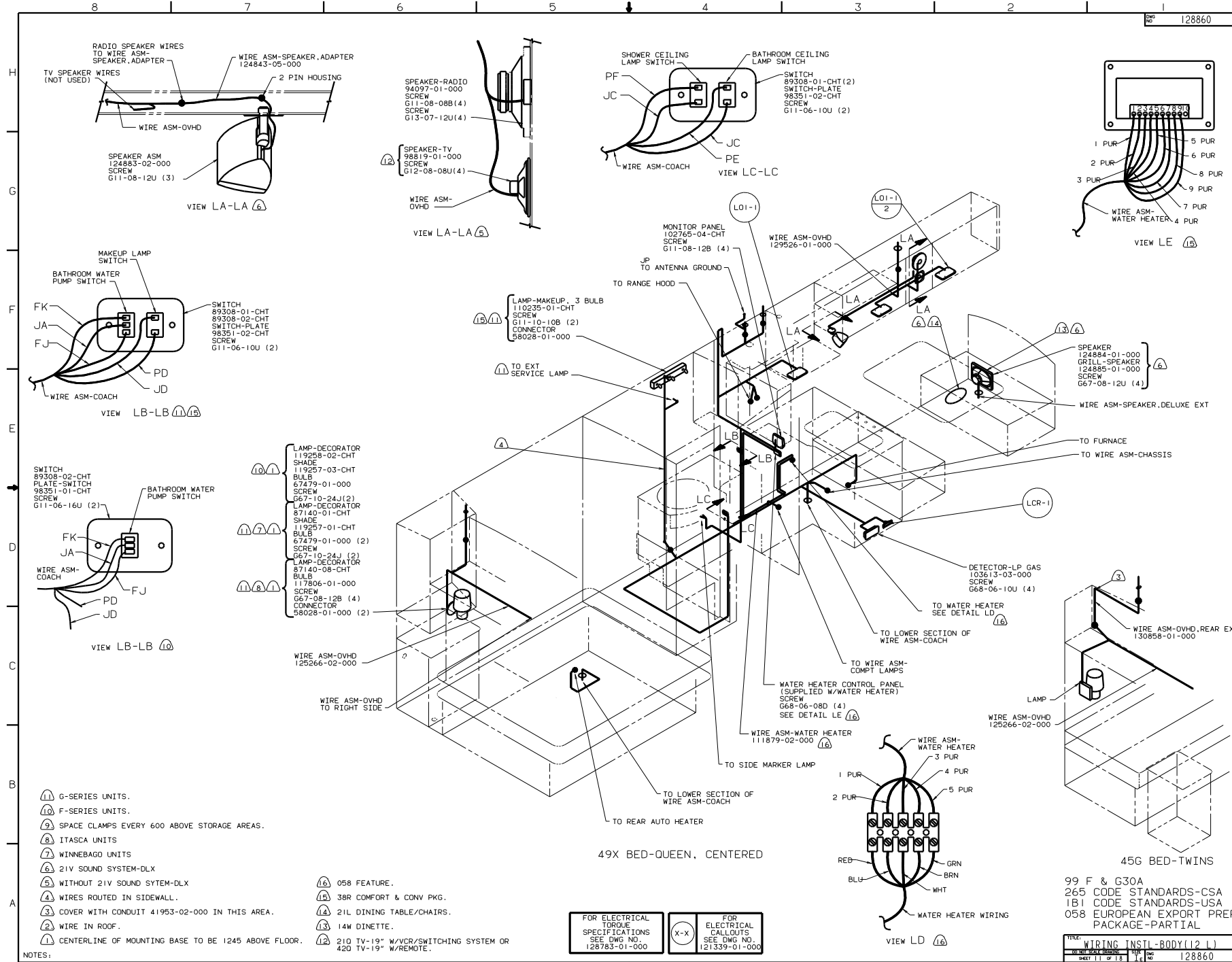
265 CODE STANDARDS-CSA

FOR ELECTRICAL TORQUE SPECIFICATIONS SEE DWG NO. 128783-01-000

FOR ELECTRICAL CALLOUTS SEE DWG NO. 121339-01-000

99 G30A ONLY
POWER CORD INLET

TITLE: WIRING INSTL-BODY(PCI)
NO. SHEET: 10 OF 18
DWG NO. 128860



- (10) LAMP-DECORATOR 119258-02-CHT SHADE 119257-03-CHT BULB 67479-01-000 SCREW 667-10-24J (2)
- (11) LAMP-DECORATOR 87140-01-CHT SHADE 119257-01-CHT BULB 67479-01-000 (2) SCREW 667-10-24J (2)
- (12) LAMP-DECORATOR 87140-08-CHT BULB 117806-01-000 SCREW 667-08-12B (4) CONNECTOR 58028-01-000 (2)

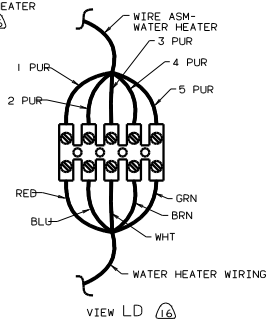
- (11) G-SERIES UNITS.
- (10) F-SERIES UNITS.
- (9) SPACE CLAMPS EVERY 600 ABOVE STORAGE AREAS.
- (8) ITASCA UNITS
- (7) WINNEBAGO UNITS
- (6) 21V SOUND SYSTEM-DLX
- (5) WITHOUT 21V SOUND SYSTEM-DLX
- (4) WIRES ROUTED IN SIDEWALL.
- (3) COVER WITH CONDUIT 41953-02-000 IN THIS AREA.
- (2) WIRE IN ROOF.
- (1) CENTERLINE OF MOUNTING BASE TO BE 1245 ABOVE FLOOR.

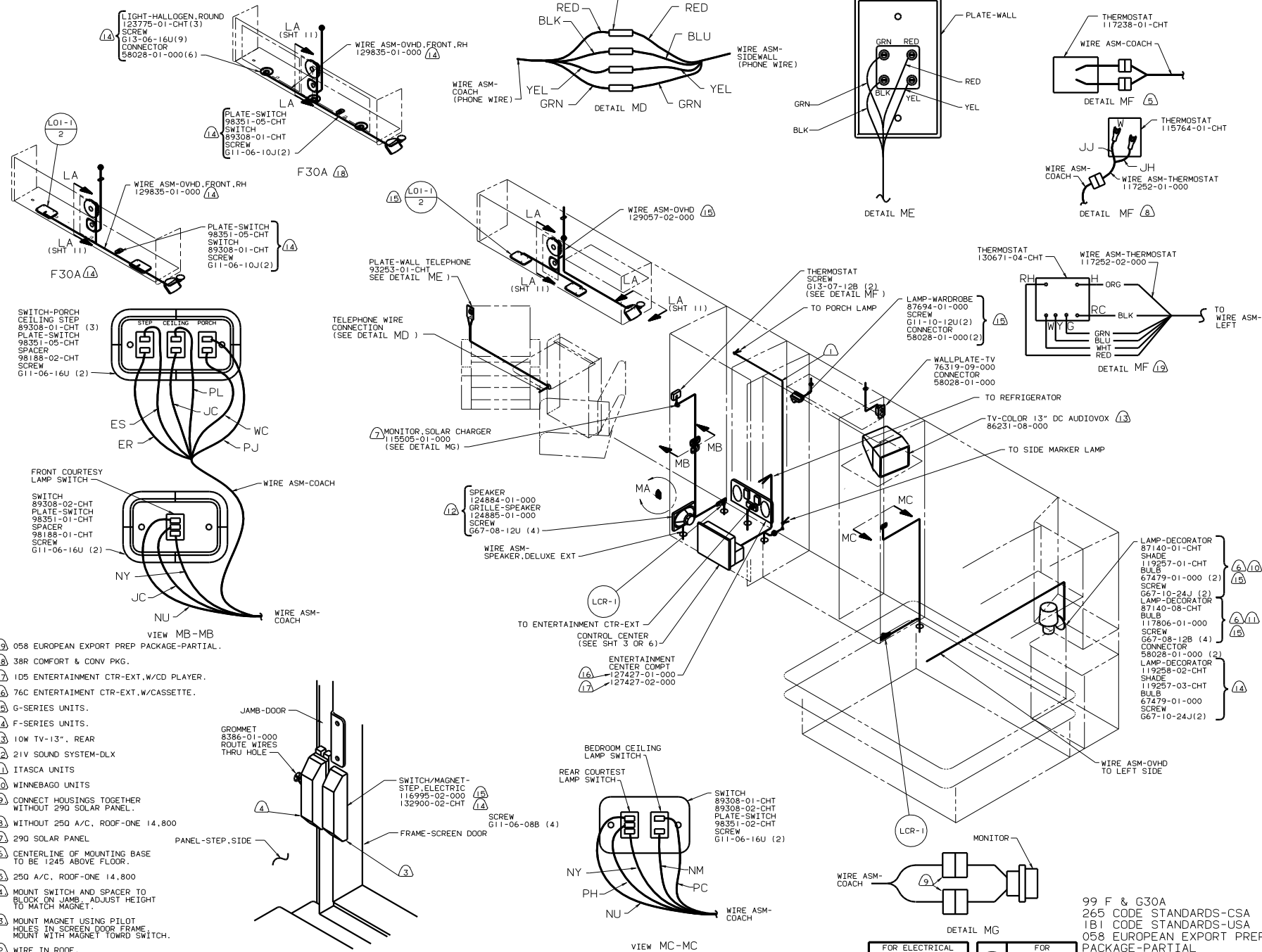
- (16) 058 FEATURE.
- (15) 38R COMFORT & CONV PKG.
- (14) 21L DINING TABLE/CHAIRS.
- (13) 14W DINETTE.
- (12) 210 TV-19" W/VCR/SWITCHING SYSTEM OR 420 TV-19" W/REMOTE.

FOR ELECTRICAL TORQUE SPECIFICATIONS SEE DWG NO. 128783-01-000

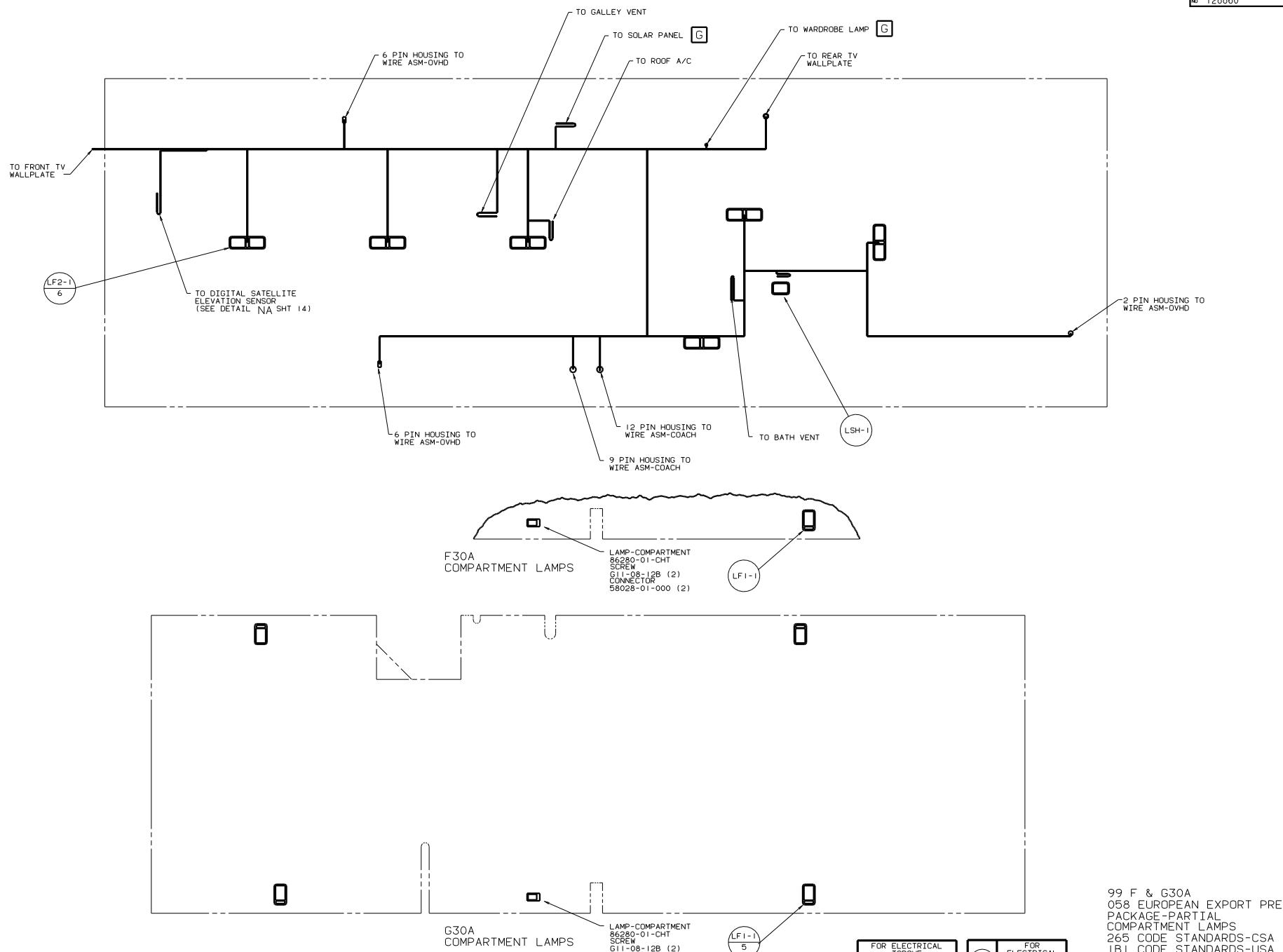
X-X

FOR ELECTRICAL CALLOUTS SEE DWG NO. 121339-01-000





- 19 058 EUROPEAN EXPORT PREP PACKAGE-PARTIAL.
- 18 38R COMFORT & CONV PKG.
- 17 1D5 ENTERTAINMENT CTR-EXT.W/CD PLAYER.
- 16 76C ENTERTAINMENT CTR-EXT.W/CASSETTE.
- 15 G-SERIES UNITS.
- 14 F-SERIES UNITS.
- 13 10W TV-13", REAR
- 12 21V SOUND SYSTEM-DLX
- 11 ITASCA UNITS
- 10 WINNEBAGO UNITS
- 9 CONNECT HOUSINGS TOGETHER WITHOUT 29Q SOLAR PANEL.
- 8 WITHOUT 25Q A/C, ROOF-ONE 14,800
- 7 29Q SOLAR PANEL
- 6 CENTERLINE OF MOUNTING BASE TO BE 1245 ABOVE FLOOR.
- 5 25Q A/C, ROOF-ONE 14,800
- 4 MOUNT SWITCH AND SPACER TO BLOCK ON JAMB. ADJUST HEIGHT TO MATCH MAGNET.
- 3 MOUNT MAGNET USING PILOT HOLES IN SCREEN DOOR FRAME. MOUNT WITH MAGNET TOWRD SWITCH.
- 2 WIRE IN ROOF.
- 1 WIRE IN SIDEWALL.



1. LAMPS TO BE MOUNTED WITH SWITCH OUTBOARD AND 75 +/-15 FROM EDGE OF FLOOR, UNLESS OTHERWISE SPECIFIED.

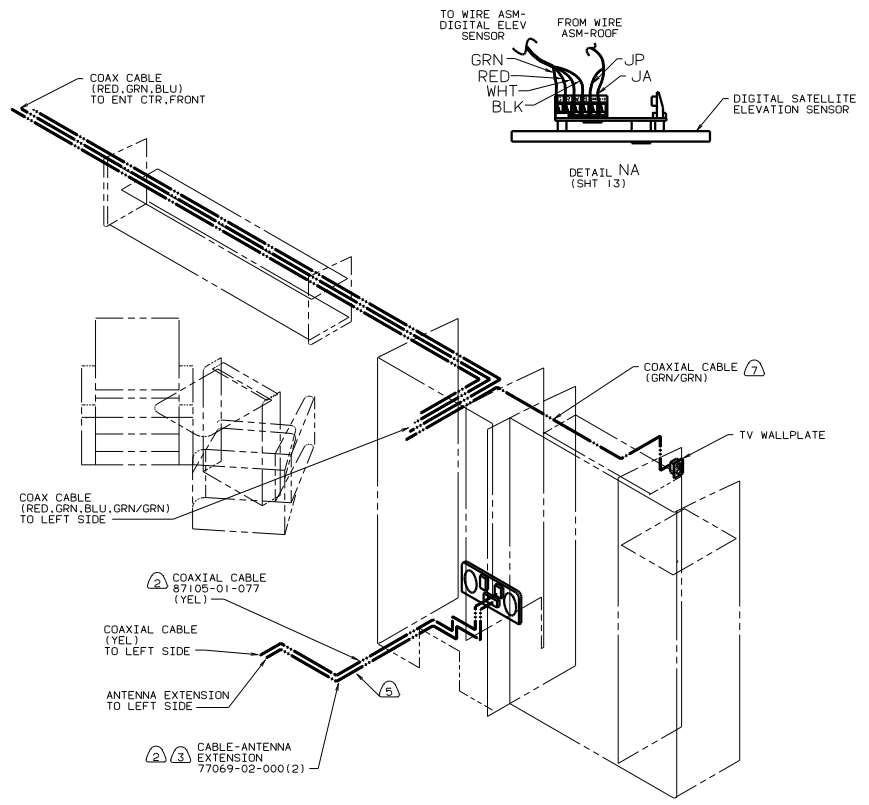
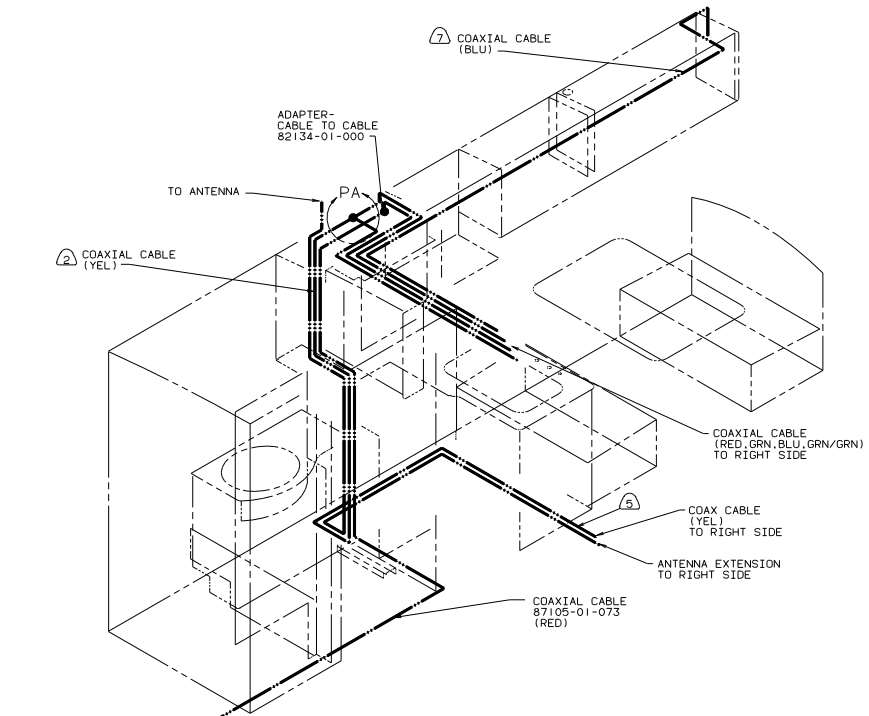
NOTES:

FOR ELECTRICAL TORQUE SPECIFICATIONS SEE DWG NO. 128783-01-000

FOR ELECTRICAL CALLOUTS SEE DWG NO. 121339-01-000

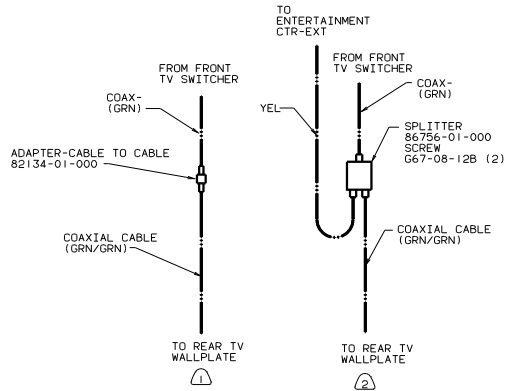
99 F & G30A
058 EUROPEAN EXPORT PREP PACKAGE-PARTIAL COMPARTMENT LAMPS 265 CODE STANDARDS-CSA 1B1 CODE STANDARDS-USA

TITLE: WIRING INSTL-BODY(12 CL)	
DATE: 01/04/00	REV: 1
SHEET: 13 OF 18	DWG NO: 128860

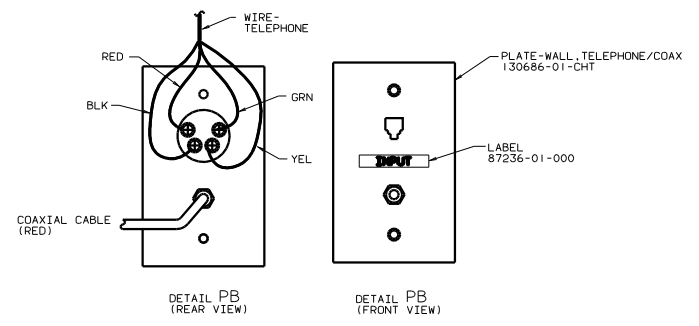


- COAX INPUT LABEL 87236-01-000 ADAPTER 82134-01-000 NUT 82136-01-000 PLATE-ACCESSORY 120931-03-CHT SCREW G39-08-12T (2) **④**
- COAX/TELEPHONE INPUT PLATE-ACCESSORY 130753-01-CHT SCREW G39-08-12T (2) (SEE DETAIL PB) **⑥**

- ⑦** WIRE IN ROOF.
- ④** G-SERIES UNITS
- ⑤** WIRE ROUTED BELOW FLOOR.
- ③** F-SERIES UNITS
- ④** FROM RADIO ANTENNA.
- ②** 76C ENTERTAINMENT CTR-EXT.
- ①** WITHOUT 76C ENTERTAINMENT CTR-EXT



DETAIL PA



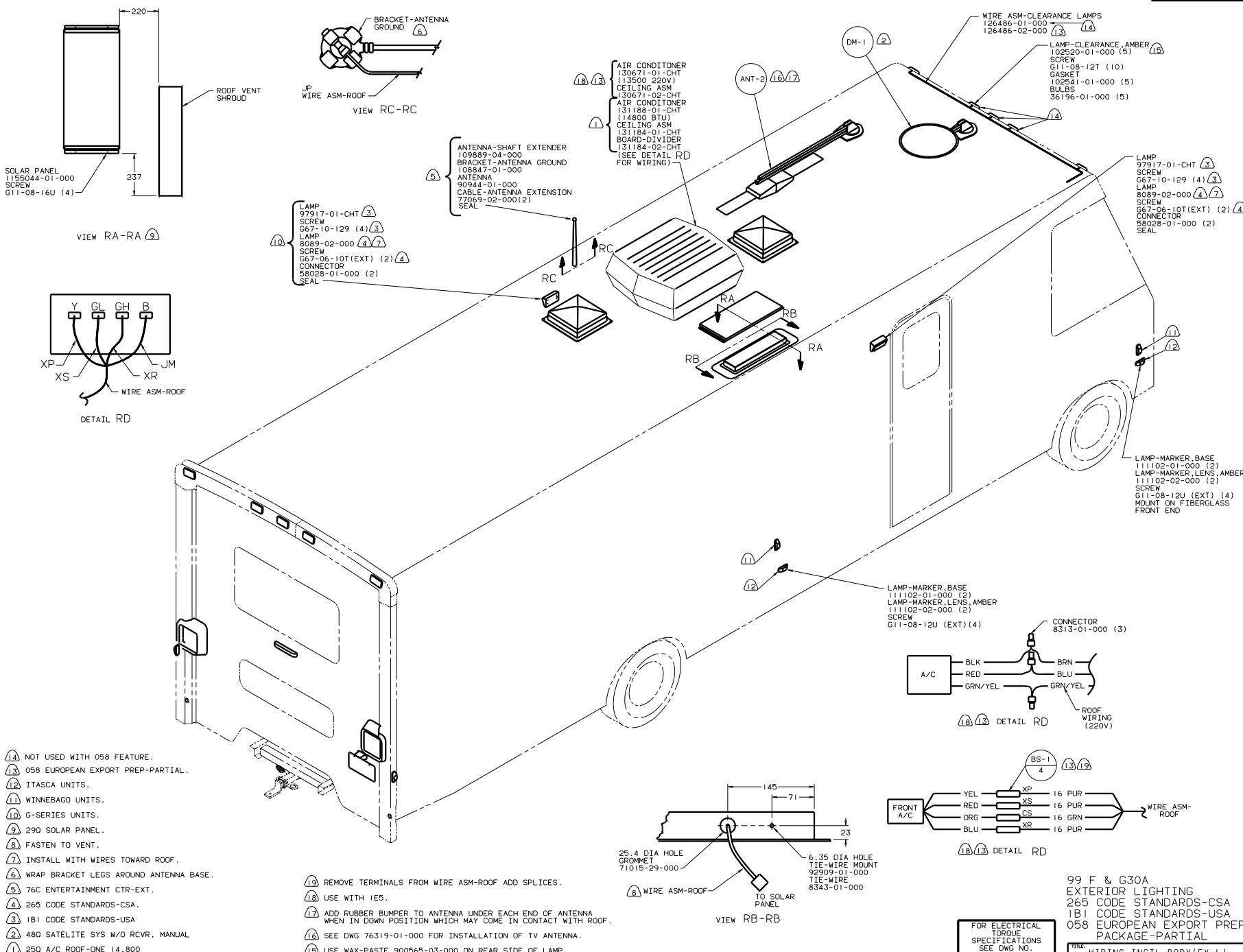
DETAIL PB (REAR VIEW)

DETAIL PB (FRONT VIEW)

COAXIAL CABLE (LEFT AND RIGHT SIDE)
 99 F & G30A
 265 CODE STANDARDS-CSA
 1B1 CODE STANDARDS-USA
 058 EUROPEAN EXPORT PREP
 PACKAGE-PARTIAL

FOR ELECTRICAL TORQUE SPECIFICATIONS SEE DWG NO. 128783-01-000

TITLE: WIRING INSTL-BODY(COAX)	DWG NO. 128860
NO. OF SHEETS: 18	SHEET 14 OF 18



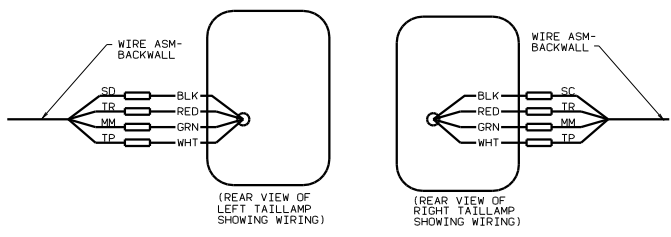
- 14 NOT USED WITH 058 FEATURE.
- 15 058 EUROPEAN EXPORT PREP-PARTIAL.
- 12 ITASCA UNITS.
- 11 WINNEBAGO UNITS.
- 10 G-SERIES UNITS.
- 9 290 SOLAR PANEL.
- 8 FASTEN TO VENT.
- 7 INSTALL WITH WIRES TOWARD ROOF.
- 6 WRAP BRACKET LEGS AROUND ANTENNA BASE.
- 5 76C ENTERTAINMENT CTR-EXT.
- 4 265 CODE STANDARDS-CSA.
- 3 1B1 CODE STANDARDS-USA.
- 2 480 SATELITE SYS W/O RCVR. MANUAL.
- 1 250 A/C ROOF-ONE 14.800

- 19 REMOVE TERMINALS FROM WIRE ASM-ROOF ADD SPLICES.
- 18 USE WITH IES.
- 17 ADD RUBBER BUMPER TO ANTENNA UNDER EACH END OF ANTENNA WHEN IN DOWN POSITION WHICH MAY COME IN CONTACT WITH ROOF.
- 16 SEE DWG 76319-01-000 FOR INSTALLATION OF TV ANTENNA.
- 15 USE WAX-PASTE 900565-03-000 ON REAR SIDE OF LAMP.

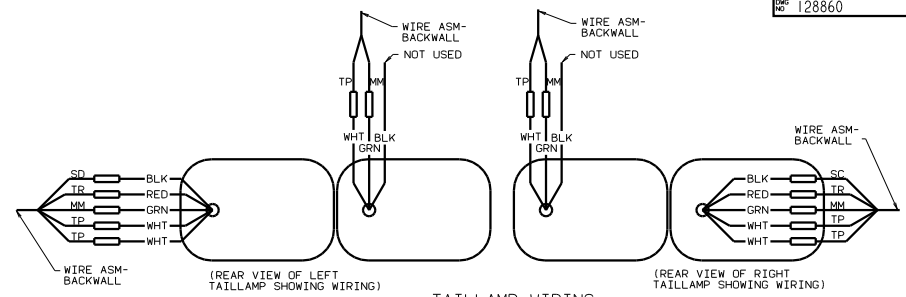
FOR ELECTRICAL TORQUE SPECIFICATIONS SEE DWG NO. 128783-01-000

99 F & G30A EXTERIOR LIGHTING 265 CODE STANDARDS-CSA 1B1 CODE STANDARDS-USA 058 EUROPEAN EXPORT PREP PACKAGE-PARTIAL

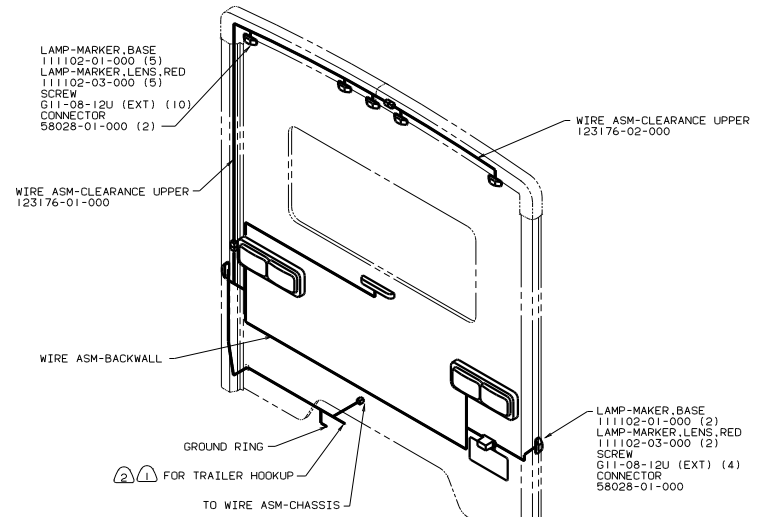
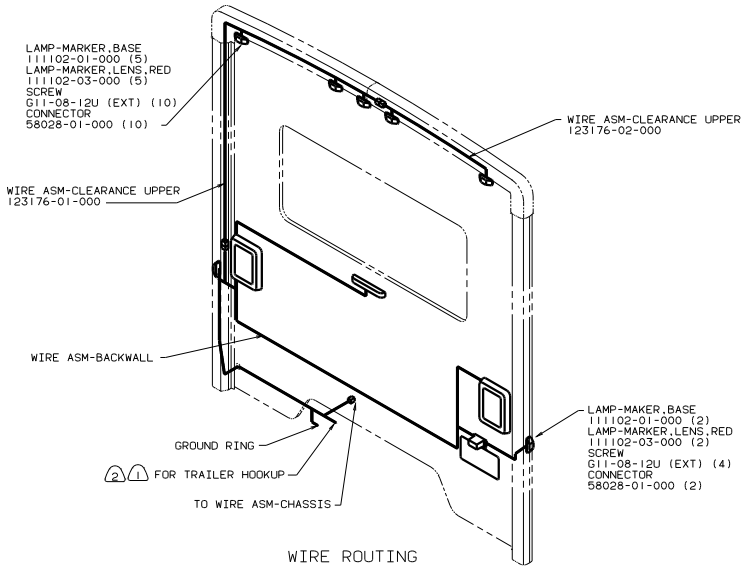
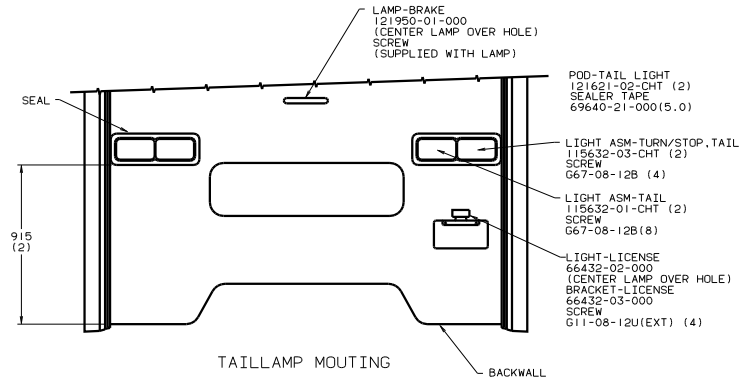
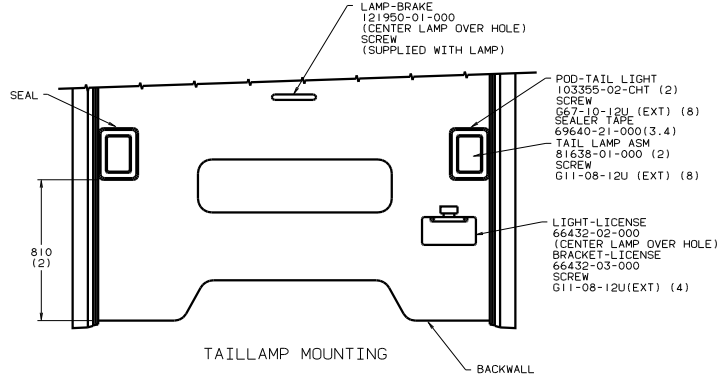
TITLE	WIRING INSTL-BODY(EX L)
NO. THIS SHEET CONTAINS	16
SHEET NO.	15 OF 18
DWG NO.	128860



TAILLAMP WIRING



TAILLAMP WIRING



WINNEBAGO
265 CODE STANDARDS CSA
1B1 CODE STANDARDS USA

ITASCA
265 CODE STANDARDS CSA
1B1 CODE STANDARDS USA

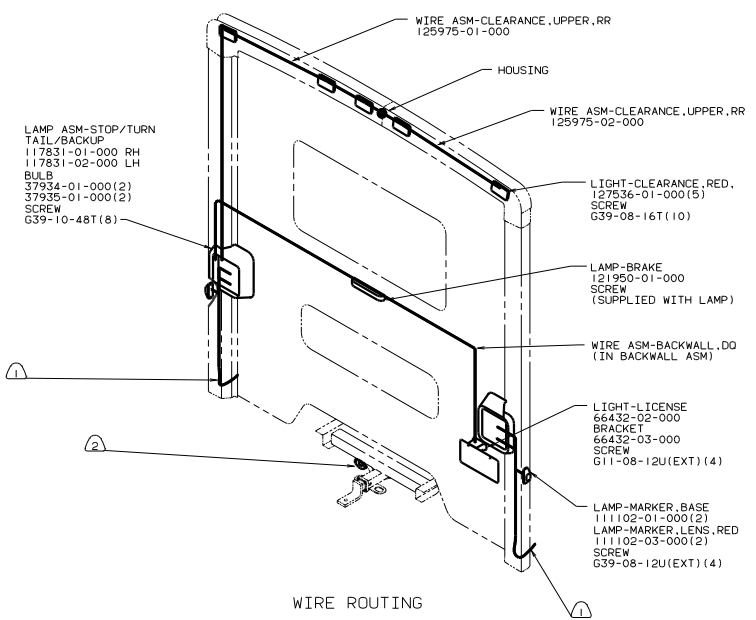
FOR ELECTRICAL
TORQUE
SPECIFICATIONS
SEE DWG NO.
128783-01-000

99 F30A-ONLY
EXTERIOR LIGHTING

TITLE:	WIRING INSTL-BODY(EX L)
NO. OF SHEETS:	16
SHEET NO.:	16 OF 18
DATE:	128860

2) CONNECTOR-PLUG, TRAILER 113589-01-000 TO BE SUPPLIED LOOSE IN COACH WITH TRAILER TOWING PACKAGE.

1) TAPE BRANCH BACK ALONG WIRE ASM WITH TAPE 8363-01-000.



WIRE ROUTING

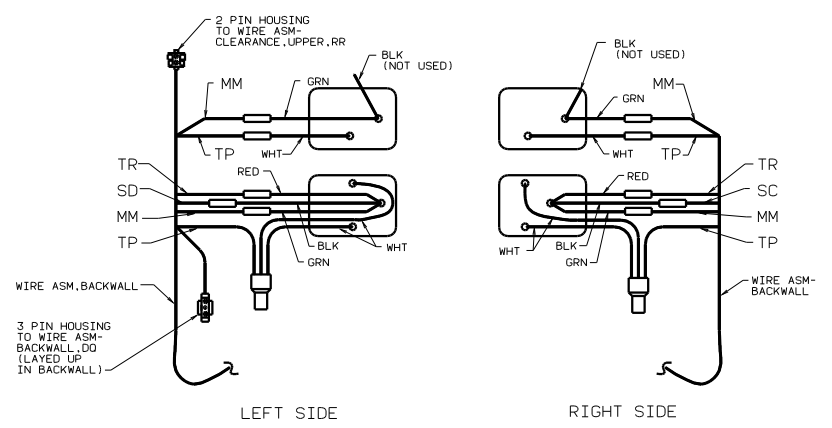
- LAMP ASM-STOP/TURN TAIL/BACKUP
- 117831-01-000 RH
- 117831-02-000 LH
- BULB
- 37934-01-000(2)
- 37935-01-000(2)
- 37935-01-000(2)
- SCREW G39-10-48T(8)

- WIRE ASM-CLEARANCE, UPPER, RR (125975-02-000)
- HOUSING
- WIRE ASM-CLEARANCE, UPPER, RR (125975-02-000)
- LIGHT-CLEARANCE, RED. (127536-01-000(5), SCREW G39-08-16T(10))

- LAMP-BRAKE (121950-01-000, SCREW (SUPPLIED WITH LAMP))
- WIRE ASM-BACKWALL, DO (IN BACKWALL ASM)

- LIGHT-LICENSE (66432-02-000 BRACKET, 66432-03-000 SCREW G11-08-12U(EXT)(4))

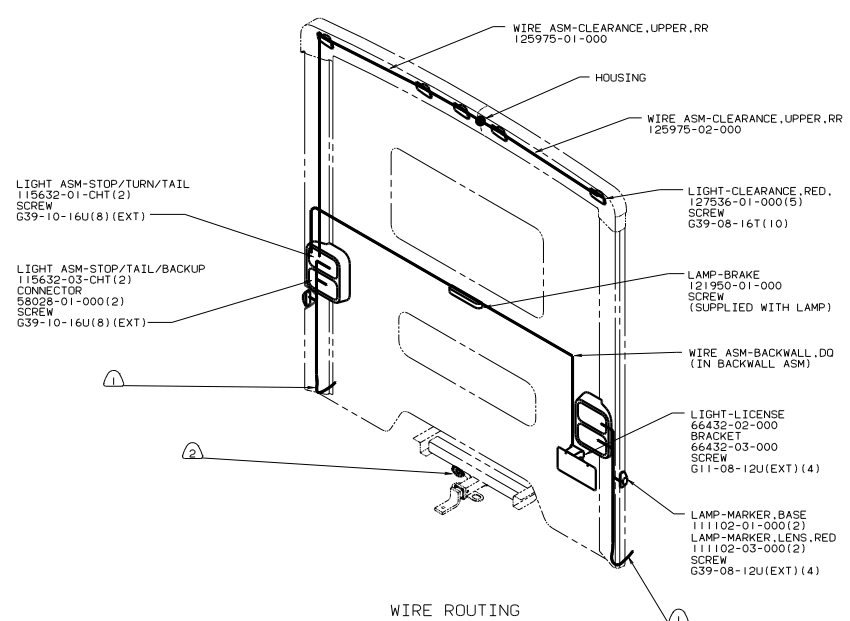
- LAMP-MARKER, BASE (111102-01-000(2))
- LAMP-MARKER, LENS, RED (111102-03-000(2), SCREW G39-08-12U(EXT)(4))



LEFT SIDE

RIGHT SIDE

TAILLAMP WIRING



WIRE ROUTING

- LIGHT ASM-STOP/TURN/TAIL (115632-01-CHT(2), SCREW G39-10-16U(8)(EXT))

- LIGHT ASM-STOP/TAIL/BACKUP (115632-03-CHT(2), CONNECTOR 58028-01-000(2), SCREW G39-10-16U(8)(EXT))

- WIRE ASM-CLEARANCE, UPPER, RR (125975-02-000)
- HOUSING
- WIRE ASM-CLEARANCE, UPPER, RR (125975-02-000)
- LIGHT-CLEARANCE, RED. (127536-01-000(5), SCREW G39-08-16T(10))

- LAMP-BRAKE (121950-01-000, SCREW (SUPPLIED WITH LAMP))
- WIRE ASM-BACKWALL, DO (IN BACKWALL ASM)

- LIGHT-LICENSE (66432-02-000 BRACKET, 66432-03-000 SCREW G11-08-12U(EXT)(4))

- LAMP-MARKER, BASE (111102-01-000(2))
- LAMP-MARKER, LENS, RED (111102-03-000(2), SCREW G39-08-12U(EXT)(4))

2) CONNECTOR-PLUG, TRAILER 113589-01-000 TO BE SUPPLIED LOOSE IN COACH WITH TRAILER TOW PACKAGE.

1) SEE WIRING INSTL-CHASSIS FOR ADDITIONAL INFORMATION.

NOTES:

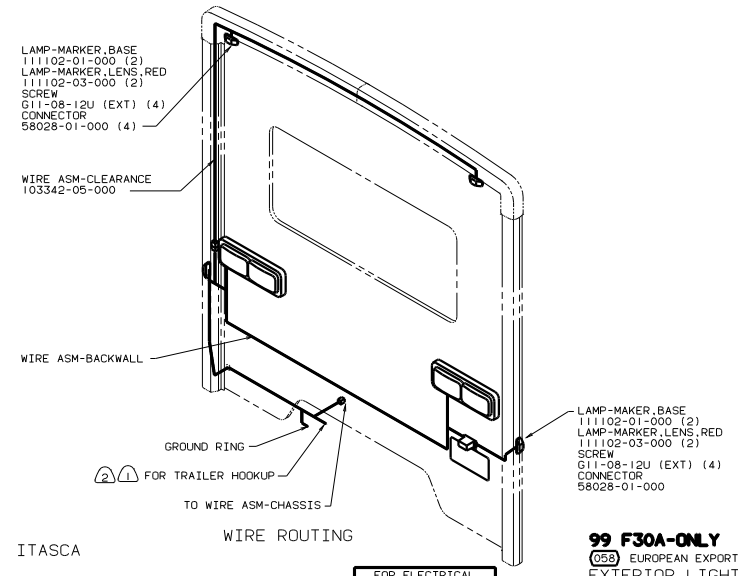
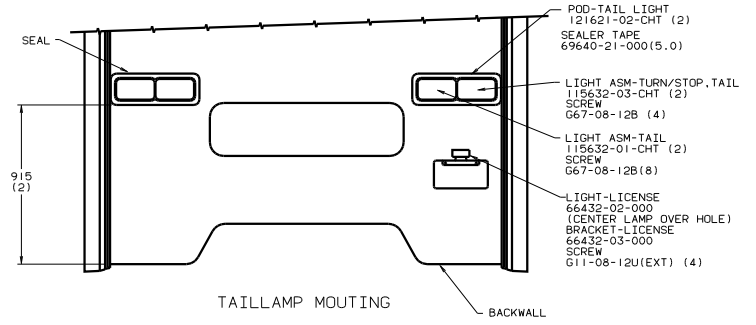
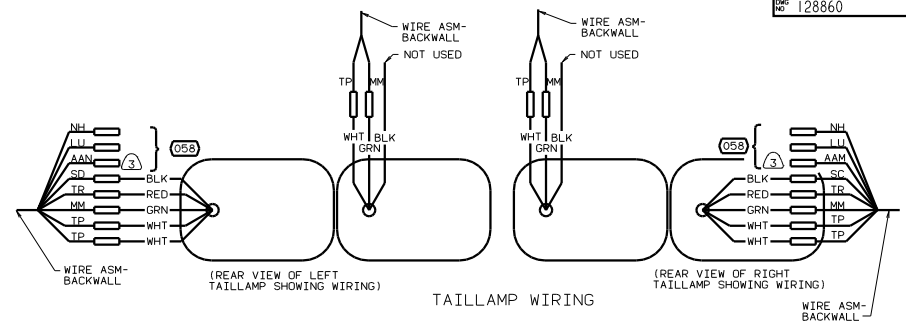
WINNEBAGO

ITASCA

FOR ELECTRICAL TORQUE SPECIFICATIONS SEE DWG NO. 128783-01-000

99 G30A ONLY
 EXTERIOR LIGHTING
 265 CODE STANDARDS-CSA
 181 CODE STANDARDS-USA

TITLE:	WIRING INSTL-BODY(EX L)
30 DAY SCALE DURING THE 1st 1/2	128860
SHEET 17 OF 18	128860



ITASCA

FOR ELECTRICAL TORQUE SPECIFICATIONS SEE DWG NO. 128783-01-000

99 F30A-ONLY
 (058) EUROPEAN EXPORT PREP-PARTIAL EXTERIOR LIGHTING

FILE NO.	WIRING INSTL-BODY(EX LJ)
DO NOT SCALE DRAWING	DATE
SHEET 18 OF 18	1E
	128860

- NOTES:
- ③ WITH 058-DO NOT CONNECT NH OR LU. AAN & AAM WILL REPLACE MM TO GRN.
 - ② CONNECTOR-PLUG,TRAILER 113589-01-000 TO BE SUPPLIED LOOSE IN COACH WITH TRAILER TOWING PACKAGE.
 - ① TAPE BRANCH BACK ALONG WIRE ASM WITH TAPE 8363-01-000.