



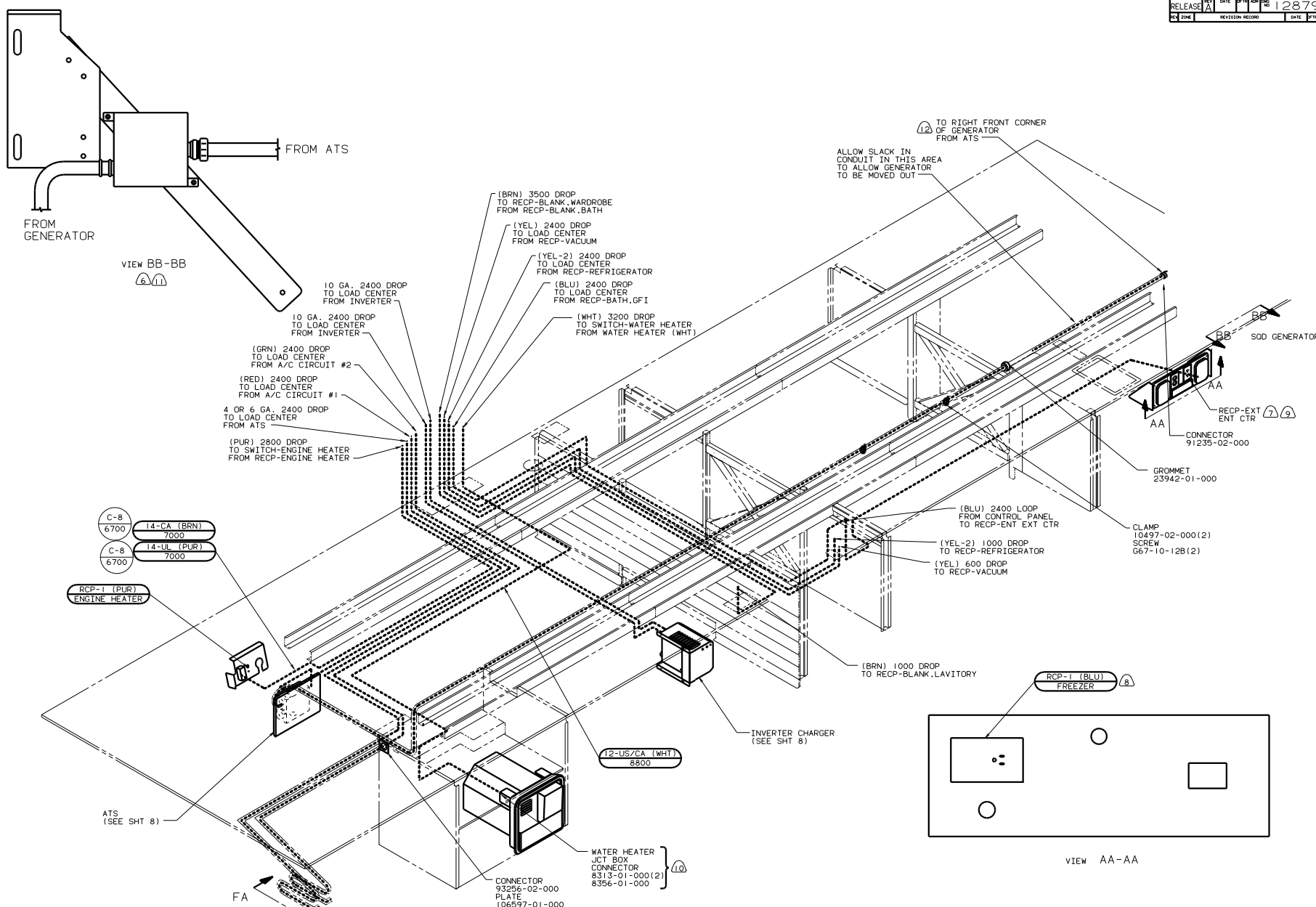
DANGER

Danger of electrical shock, burns or death. Always remove all power sources before attempting any repair, service or diagnostic work. Power can be present from shore power, generator, inverter or battery. All power sources must be disabled and secured before performing any service.



CAUTION

If you lack the skills, tools or equipment to perform diagnostic or repair work leave such work to an authorized Winnebago Industries dealer or other qualified shop.



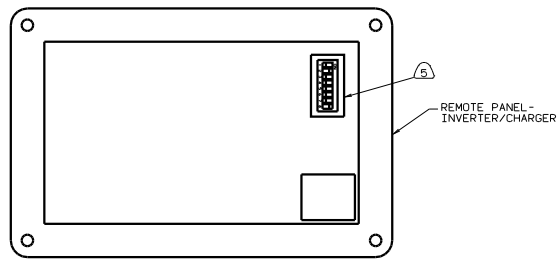
- (6) SEE GENERATOR INSTALLATION FOR ADDITIONAL INFORMATION.
- (5) RECP MOUNTED TO BOTTOM SIDE OF UPPER FLOOR.
- 4. SEE WIRING DIAGRAM-BODY FOR ADDITIONAL INFORMATION.
- 3. ALL GROUND WIRES ARE TO BE COVERED WITH TUBING 8041-02-000.
- 2. ALL WIRES ARE TO BE CLAMPED WITH CLAMP 10497-05-000 WITHIN 200 OF OUTLET BOXES AND SPLICES. USE SCREW G67-10-12B OR G39-10-12B.
- 1. ALL WIRE TO BE CLAMPED WITH CLAMP 10495-01-000 OR CLIP 80734-02-000 EVERY 600. USE SCREW G67-10-12B UNLESS OTHERWISE SPECIFIED.

- (12) 760- GENERATOR QUIET DIESEL. 7.500 WATT ONAN.
- (11) 39R GENERATOR-6,5000 WATT. ONAN MARQUIS LIQUID LP.
- (10) 53F WATER HTR-ELEC. IGN
- (9) 76C EXTERIOR ENT CTR W/CASSETTE OR IDS EXTERIOR ENT CTR W/COMPACT DISC.
- (8) 11E REFRIGERATOR/FREEZER-PORTABLE.
- (7) SEE EXT ENT CTR COMPLETE FOR ADDITIONAL INFORMATION.

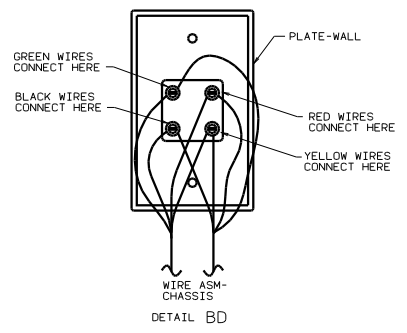
FOR ELECTRICAL TORQUE SPECIFICATIONS SEE DWG NO. 128783-01-000

FOR ELECTRICAL CALLOUTS SEE DWG NO. 121339-01-000

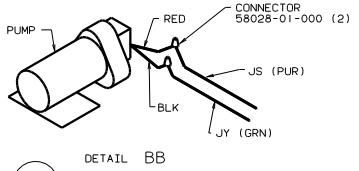
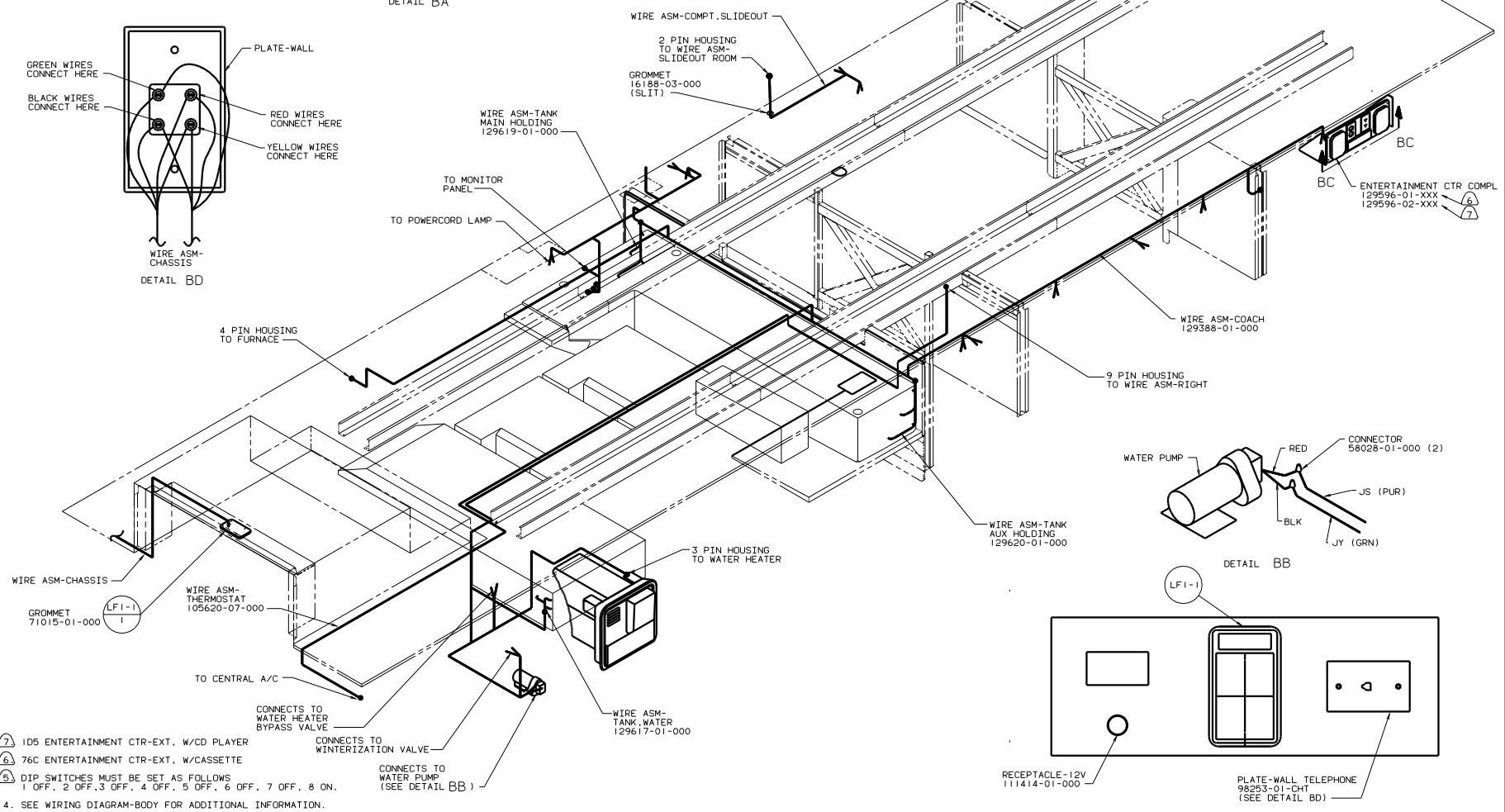
		99 G38KD
DPTN B. ZIEBELL CHP ELEC GROUP DWN M. ALBERTS DLE K. SCHEPPE COMB J. WILLE	DATED 1/22/98 DATE 1/22/98 DATE 1/22/98 DATE 1/22/98	UNDESIGNED TOLERANCES ARE: WELD DIM (IN) .015 DIM-PLATE (IN) .01 DIM-PLATE (IN) .01 DIM-PLATE (IN) .01 DIM-PLATE (IN) .01
TITLE: WIRING INSTL-BODY (110 BF)		SHEET 1 OF 18
1/8" = 1" SCALE: NONE TO THE SCALE PROVIDED		DWG NO. 128791



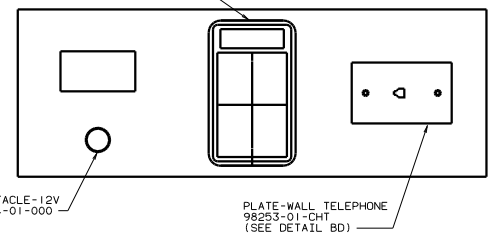
DETAIL BA



DETAIL BD



DETAIL BB



VIEW BC-BC

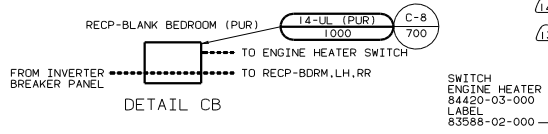
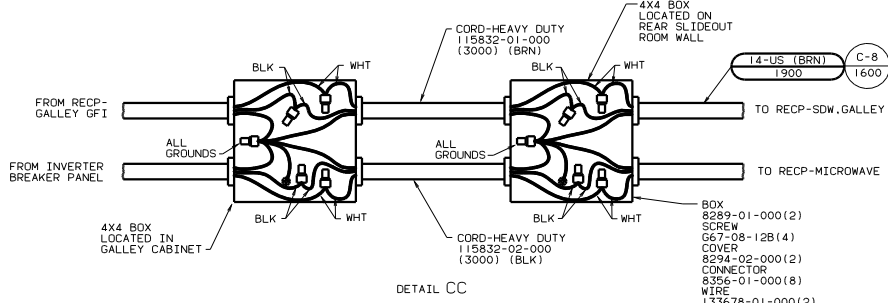
- 7 105 ENTERTAINMENT CTR-EXT. W/CD PLAYER
- 6 76C ENTERTAINMENT CTR-EXT. W/CASSETTE
- 5 DIP SWITCHES MUST BE SET AS FOLLOWS
1 OFF, 2 OFF, 3 OFF, 4 OFF, 5 OFF, 6 OFF, 7 OFF, 8 ON.

- 4. SEE WIRING DIAGRAM-BODY FOR ADDITIONAL INFORMATION.
- 3. ALL GROUND WIRES ARE TO BE COVERED WITH TUBING 8041-02-000.
- 2. ALL WIRES ARE TO BE CLAMPED WITH CLAMP 10497-05-000 WITHIN 200 OF OUTLET BOXES AND SPLICES. USE SCREW G67-10-12B OR G39-10-12B.
- 1. ALL WIRE TO BE CLAMPED WITH CLAMP 10495-01-000 OR CLIP 80734-02-000 EVERY 600. USE SCREW G67-10-12B UNLESS OTHERWISE SPECIFIED.

NOTES:

FOR ELECTRICAL
TORQUE
SPECIFICATIONS
SEE DWG NO.
128783-01-000

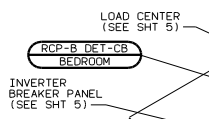
FOR
ELECTRICAL
CALLOUTS
SEE DWG NO.
121339-01-000



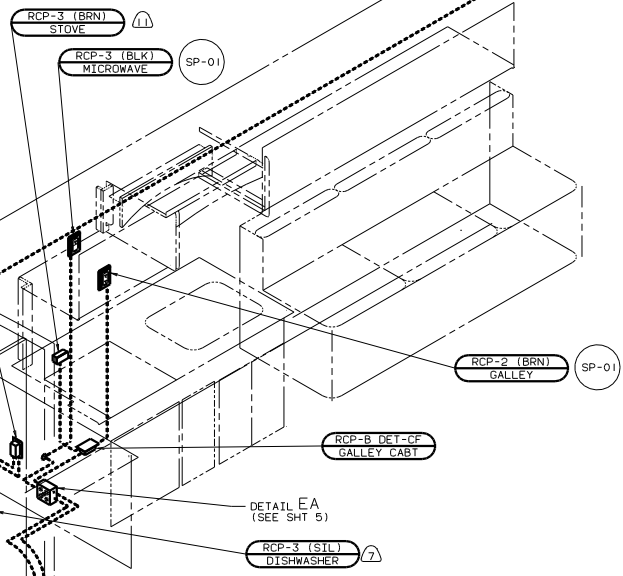
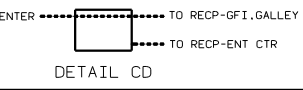
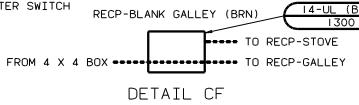
- ① 428 TV (REAR)-WITHOUT.
 - ② 10W TV (RESR) AC 19" COLOR W/REMOTE.
 - ③ WIRE ROUTED THRU FLOOR.
 - ④ NOT USED WITH 132 RANGE TOP OR 136 RANGE.
 - ⑤ WIRE ROUTED IN ROOF.
 - ⑥ 26L REAR STEREO SYSTEM.
 - ⑦ 54E WASHER/DRYER COMBINATION.
 - ⑧ 21N DISHWASHER-UNDER COUNTER BUILT-IN.
 - ⑨ WIRE ROUTED IN SIDEWALL.
 - ⑩ WIRE ROUTED BELOW FLOOR. CLAMP TO FLOOR AS NECESSARY WITH CLAMP 10497-01-000 OR WIRE TIE 8343-02-000. CLAMPS OR WIRE TIES TO BE LOCATED ABOVE STORAGE AREAS EVERY 500 MM.
4. SEE WIRING DIAGRAM-BODY FOR ADDITIONAL INFORMATION.
3. ALL GROUND WIRES ARE TO BE COVERED WITH TUBING 8041-02-000.
2. ALL WIRES ARE TO BE CLAMPED WITH CLAMP 10495-01-000 WITHIN 200 OF OUTLET BOXES AND SPLICES. USE SCREW G67-10-12B OR G39-10-12B.
1. ALL WIRE TO BE CLAMPED WITH CLAMP 10495-01-000 OR CLIP 80734-02-000 EVERY 600. USE SCREW G67-10-12B UNLESS OTHERWISE SPECIFIED.

- BOX 8289-01-000(2)
- SCREW G67-08-12B(4)
- COVER 8294-02-000(2)
- CONNECTOR 8356-01-000(8)
- WIRE 133678-01-000(2)
- CONNECTOR 8313-01-000(8)
- 8314-01-000(2)
- SCREW-GROUND, GREEN 105291-01-000(2)

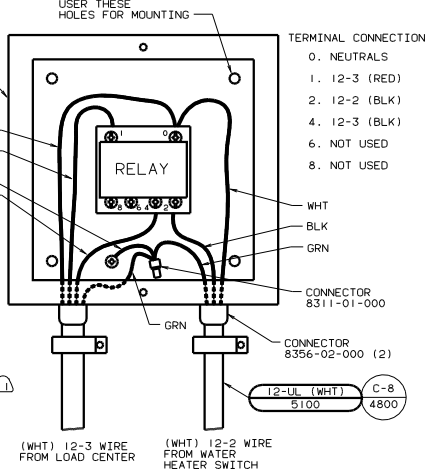
- SWITCH WATER HEATER 84420-03-000 LABEL 83588-01-000



49X BED-QUEEN BACKWALL



- BOX 131831-01-000
- RELAY 131832-01-000
- SOCKET-RELAY 131832-02-000
- SCREW G67-08-12B (4)

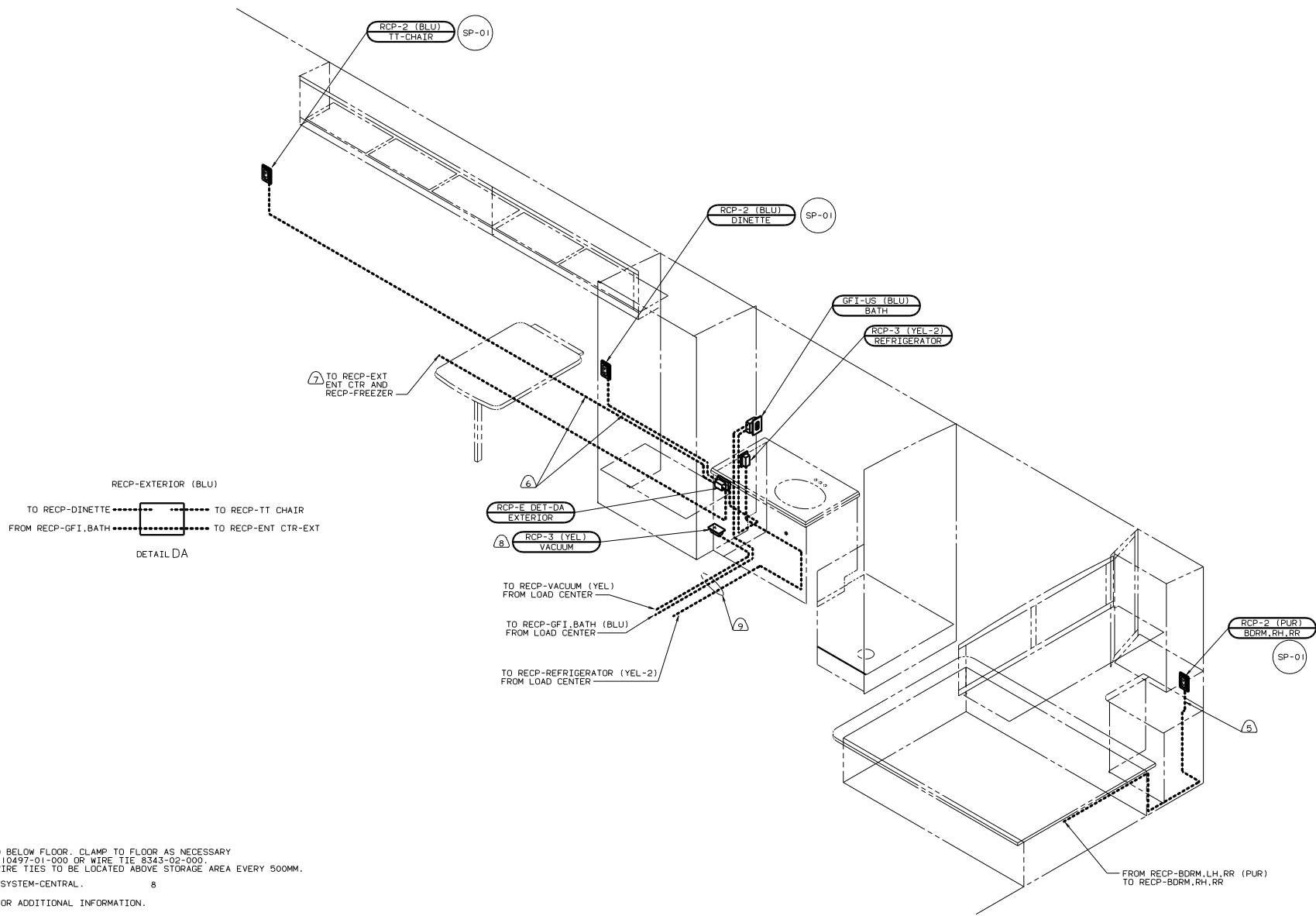


FOR ELECTRICAL TORQUE SPECIFICATIONS SEE DWG NO. 128783-01-000

FOR ELECTRICAL CALLOUTS SEE DWG NO. 121339-01-000

99 Q38KD
1B1 CODE STANDARDS-USA
78J ELECTRICAL SYS-50 AMP

WIRING INSTL-BODY (110150US)
SHEET 3 OF 18
128791



- 9 WIRE ROUTED BELOW FLOOR. CLAMP TO FLOOR AS NECESSARY WITH CLAMP 10497-01-000 OR WIRE TIE 8343-02-000. CLAMPS OR WIRE TIES TO BE LOCATED ABOVE STORAGE AREA EVERY 500MM.
- 8 22T VACUUM SYSTEM-CENTRAL.
- 7 SEE SH1 FOR ADDITIONAL INFORMATION.
- 6 WIRE ROUTED IN SIDEWALL.
- 5 WIRE ROUTED THRU SIDEWALL.
- 4. SEE WIRING DIAGRAM-BODY FOR ADDITIONAL INFORMATION.
- 3. ALL GROUND WIRES ARE TO BE COVERED WITH TUBING 8041-02-000.
- 2. ALL WIRES ARE TO BE CLAMPED WITH CLAMP 10497-05-000 WITHIN 200 OF OUTLET BOXES AND SPLICES. USE SCREW G67-10-12B OR G39-10-12B.
- 1. ALL WIRE TO BE CLAMPED WITH CLAMP 10495-01-000 OR CLIP 80734-02-000 EVERY 600. USE SCREW G67-10-12B UNLESS OTHERWISE SPECIFIED.

NOTES:

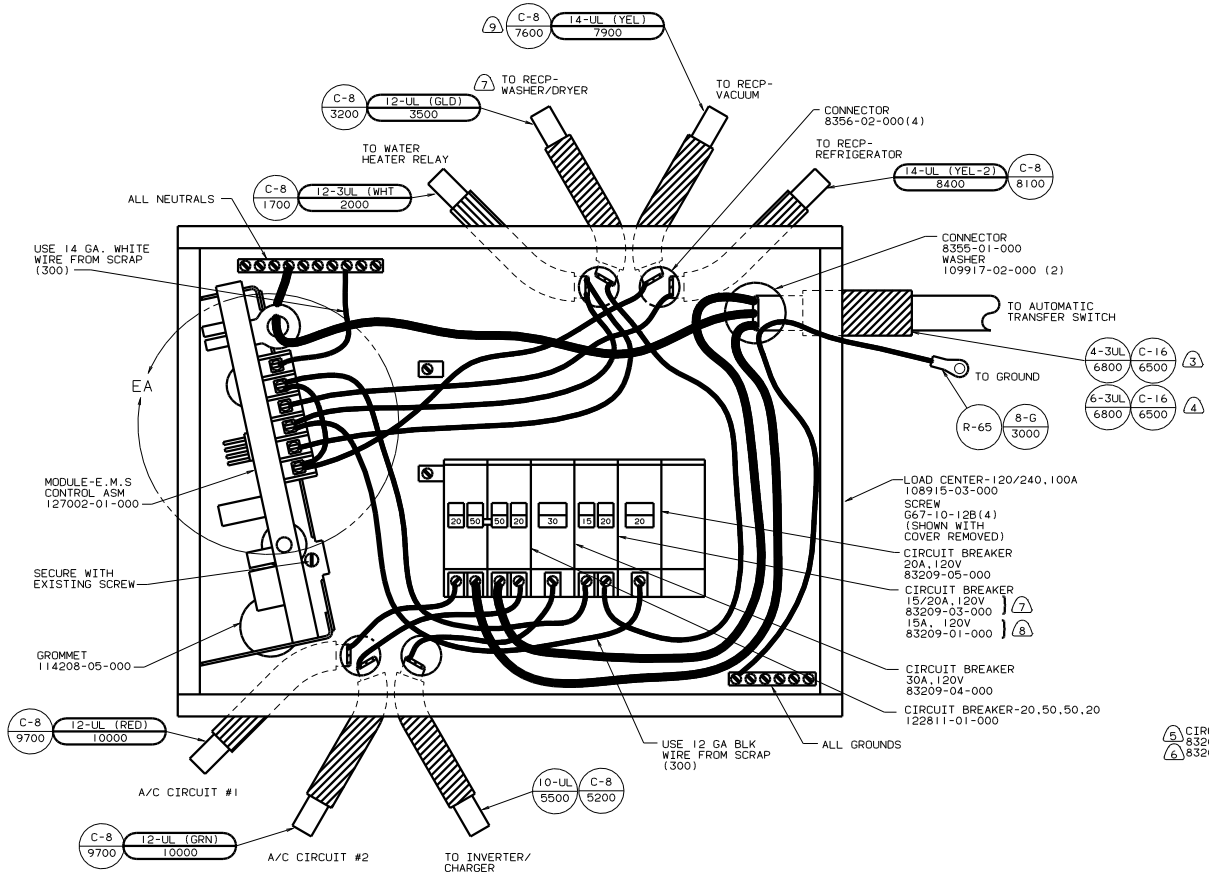
FROM RECP-BDRM, LH, RR (PUR)
TO RECP-BDRM, RH, RR

FOR ELECTRICAL TORQUE SPECIFICATIONS SEE DWG NO. 128783-01-000

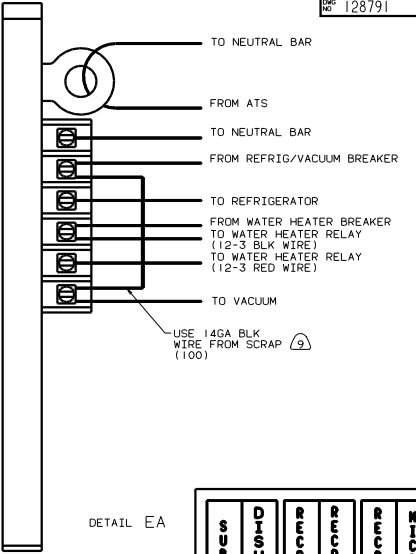
FOR ELECTRICAL CALLOUTS SEE DWG NO. 121339-01-000

99 Q38KD
IB1 USA STANDARDS

WIRING INSTL-BODY (110R50US)
SHEET 4 OF 18

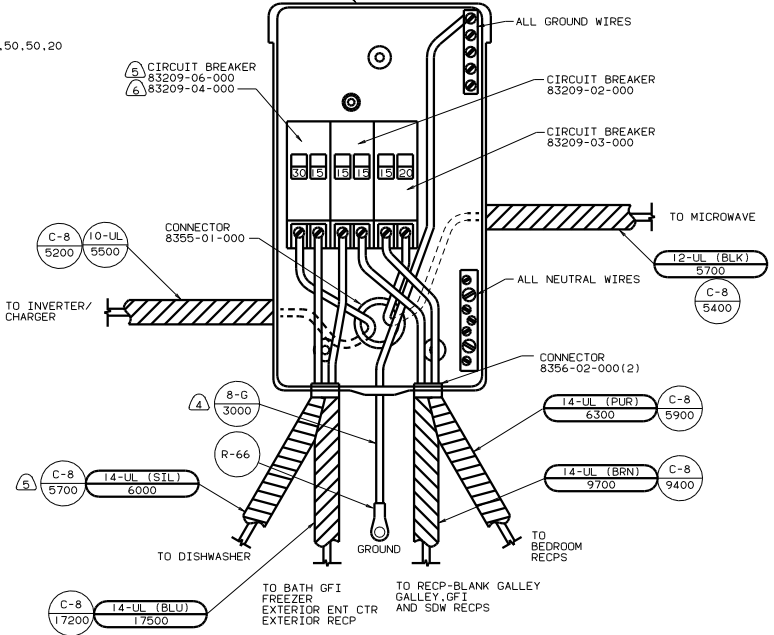


LOAD CENTER 109677-01-000
SCREW G67-10-12B (4)
(SHOWN WITH COVER REMOVED)
LABEL 95721-20-000



SUB-MAIN	DISHWASHER	RECP 1	RECP 2	RECP 3	MICROWAVE

A/C CIRCUIT 1	MAIN	MAIN	A/C CIRCUIT 2	INVERTER/ CHARGER	WASHER/DRYER	REFRIG/VACUUM	WASHER/DRYER	WATER HEATER	
---------------	------	------	---------------	-------------------	--------------	---------------	--------------	--------------	--



INSTALL LABEL ON FRONT PANEL BELOW BREAKERS BETWEEN MOUNTING HOLES

LABEL 95721-22-000

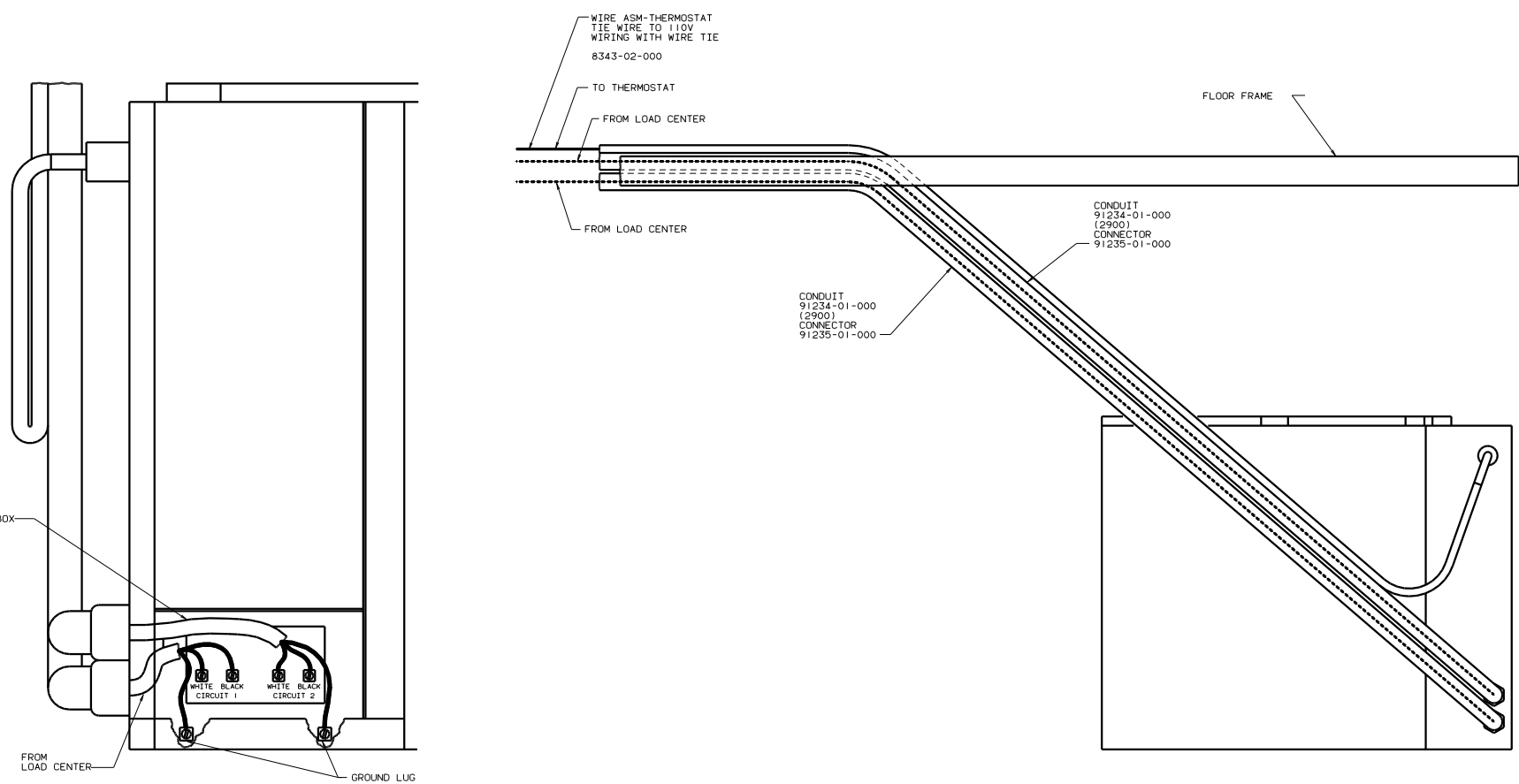
- 1. ALL GROUND WIRES TO BE COVERED WITH TUBING 8041-02-000.
- 2. WIRE MUST BE 700 LONG INSIDE BOX.
- 3. 670 GEN-7,5KW ONAN O DSL.
- 4. 39R GEN-6,5KW ONAN LP.
- 5. 22T VACUUM SYSTEM-CENTRAL.
- 6. 215 DISHWASHER-WITHOUT.
- 7. 54E WASHER/DRYER COMBIATION.
- 8. 21T WASHER/DRYER WITHOUT.
- 9. 21N DISHWASHER-UNDER COUNTER BUILT IN.

FOR ELECTRICAL TORQUE SPECIFICATIONS SEE DWG NO. 128783-01-000

FOR ELECTRICAL CALLOUTS SEE DWG NO. 121339-01-000

99 Q38KD
IBI CODE STANDARDS-USA

WIRING INSTL-BODY(50 LC US)
sheet 5 of 18



VIEW FA-FA

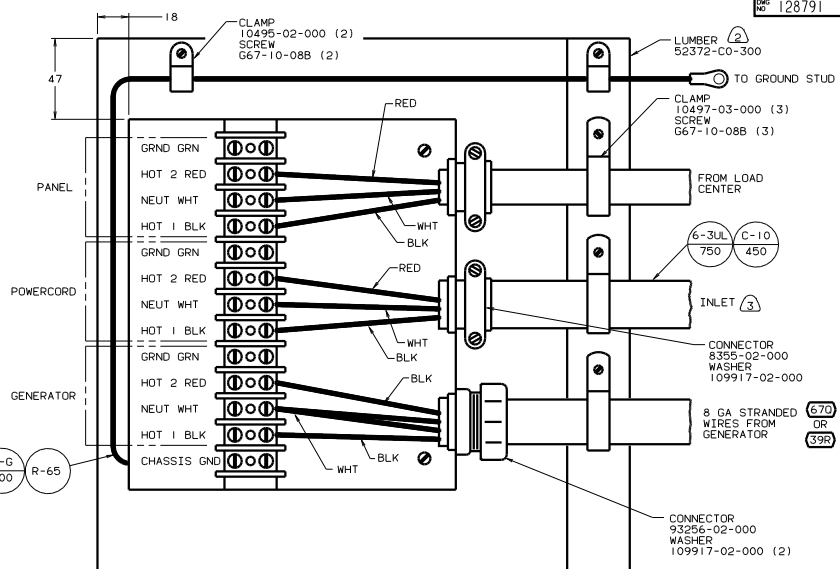
FOR ELECTRICAL
TORQUE
SPECIFICATIONS
SEE DWG NO.
128783-01-000

(X-X)

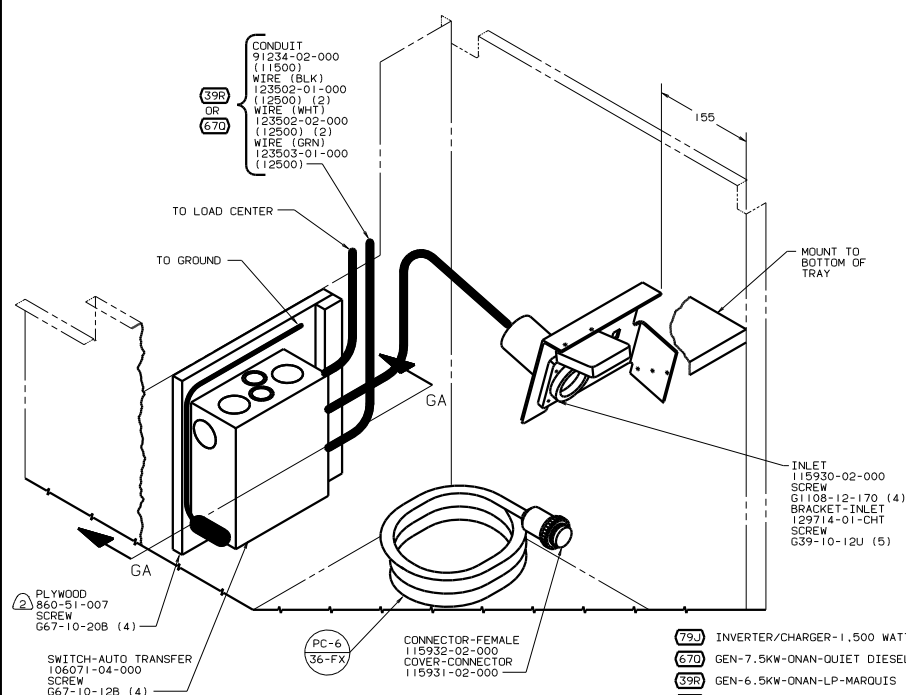
FOR
ELECTRICAL
CALLOUTS
SEE DWG NO.
121339-01-000

99 Q38KD
1B1 USA STANDARDS
265 CANADIAN HOUSING AND
MOTOR VEHICLE STANDARDS

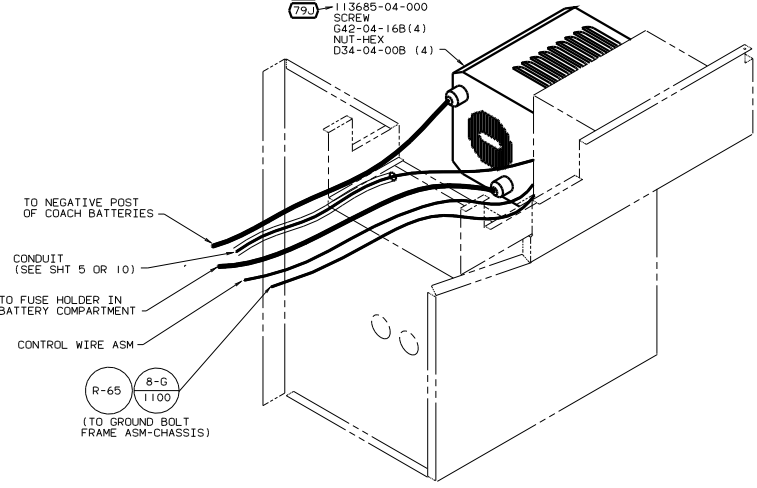
TITLE: WIRING INSTL-BODY(CNTRL A/C)
SHEET 6 OF 18



VIEW GA-GA



- (13X) INVERTER/CHARGER
- 113685-01-000
- 113685-04-000
- SCREW G42-04-16B (4)
- NUT-HEX D34-04-00B (4)



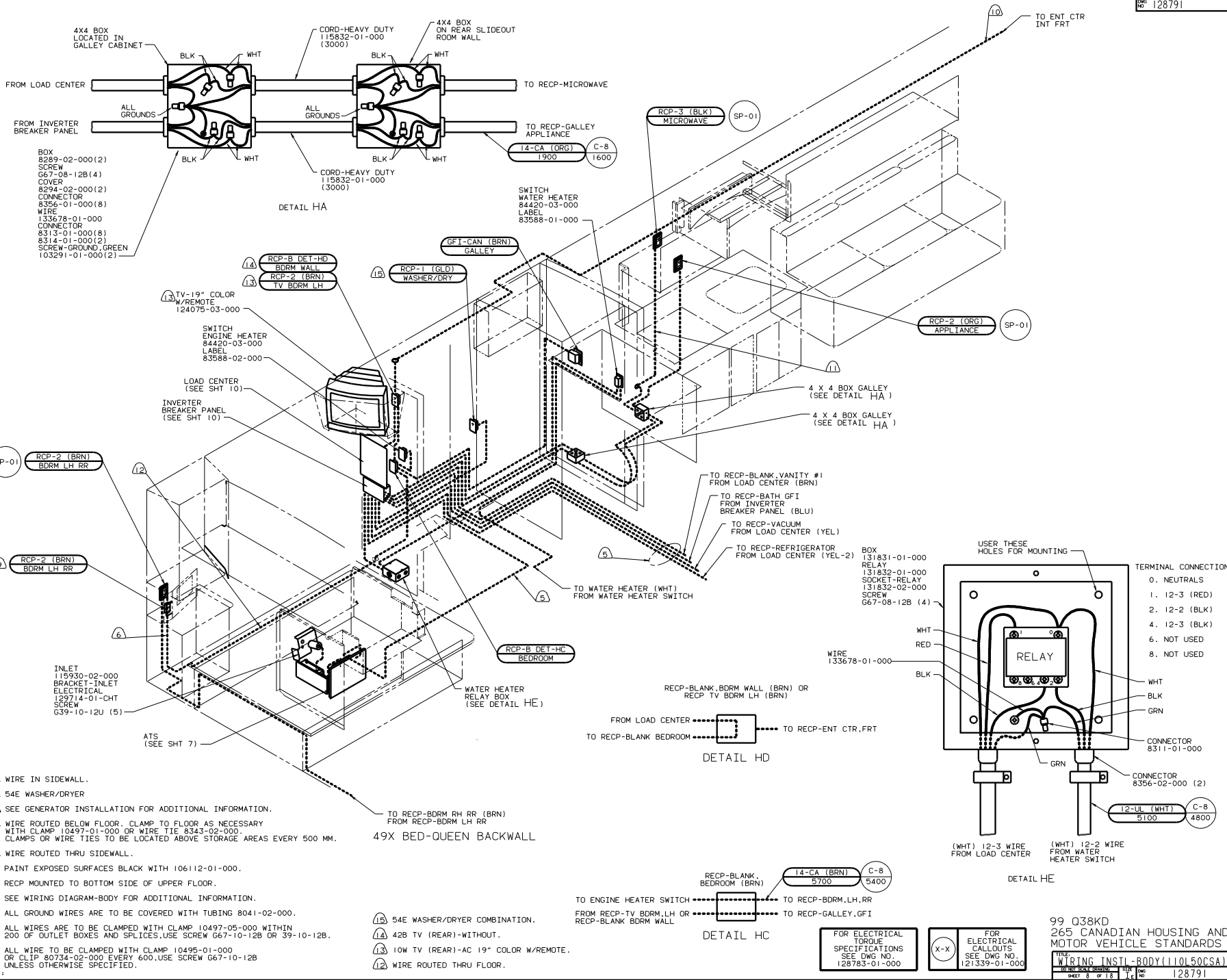
INVERTER/CHARGER

- (3) SOLDER DIP STRIPPED ENDS.
- (2) PAINT EXPOSED SURFACES BLACK WITH 106112-01-000.
- (1) ALL WIRES TO BE CLAMPED WITHIN 200 OF BOX.

FOR ELECTRICAL TORQUE SPECIFICATIONS SEE DWG NO 128783-01-000

(X-X) FOR ELECTRICAL CALLOUTS SEE DWG NO 121339-01-000

- (72J) INVERTER/CHARGER-1.500 WATT
- (670) GEN-7.5KW-ONAN-QUIET DIESEL
- (39R) GEN-6.5KW-ONAN-LP-MARQUIS
- (13X) INVERTER/CHARGER 2.0 KW
- (1B1) CODES/STANDARDS USA
- 99 Q38KD (1B1)

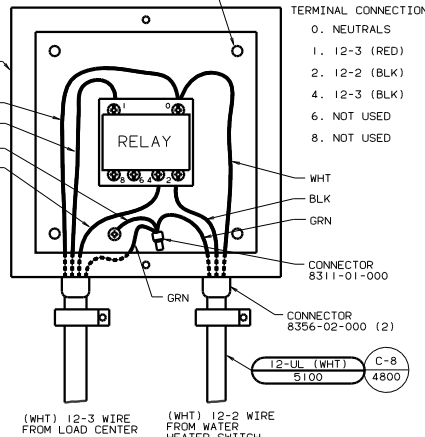


DETAIL HA

DETAIL HD

DETAIL HC

DETAIL HE



- 4X4 BOX LOCATED IN GALLEY CABINET
- BLK
- WHT
- CORD-HEAVY DUTY 115832-01-000 (3000)
- 4X4 BOX ON REAR SLIDEOUT ROOM WALL
- BLK
- WHT
- FROM LOAD CENTER
- ALL GROUNDS
- TO RECP-MICROWAVE
- TO RECP-GALLEY APPLIANCE
- 14-CA (ORG) 1900
- C-8 1600
- BOX 8289-02-000(2)
- SCREW G67-08-12B(4)
- COVER 8294-02-000(2)
- CONNECTOR 8356-01-000(8)
- WIRE 133678-01-000
- CONNECTOR 8313-01-000(8)
- 8314-01-000(2)
- SCREW-GROUND, GREEN 103291-01-000(2)

- SP-01
- RCP-2 (BRN) BDRM LH RR
- TV-19" COLOR W/REMOTE 124075-03-000
- SWITCH ENGINE HEATER 84420-03-000 LABEL 83588-02-000
- LOAD CENTER (SEE SHT 10)
- INVERTER BREAKER PANEL (SEE SHT 10)
- RCP-2 (BRN) BDRM LH RR
- INLET 115930-02-000 BRACKET-INLET ELECTRICAL 129714-01-CHT SCREW G39-10-12U (5)
- ATS (SEE SHT 7)

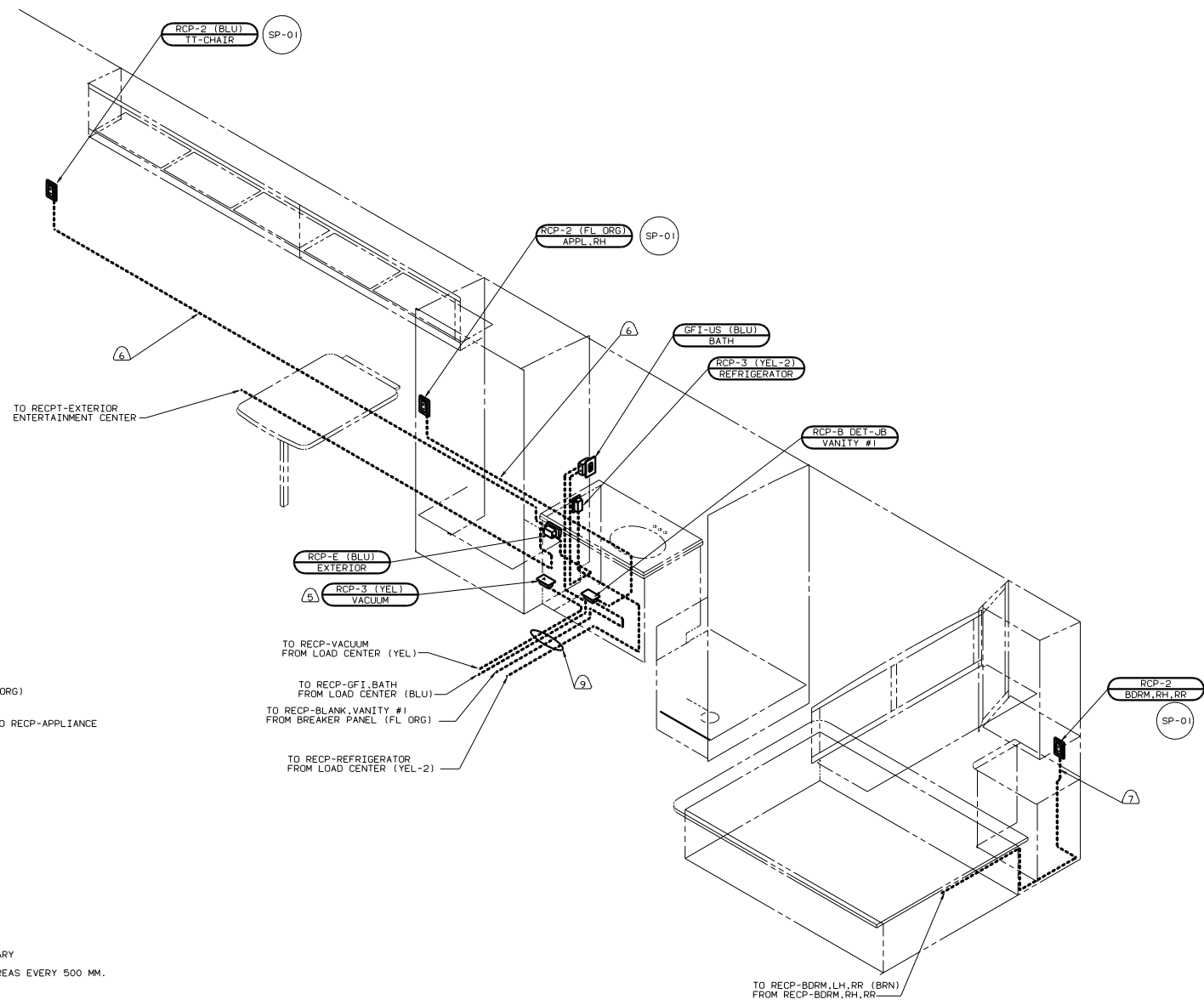
- 1. WIRE IN SIDEWALL.
- 2. 54E WASHER/DRYER
- 3. SEE GENERATOR INSTALLATION FOR ADDITIONAL INFORMATION.
- 4. WIRE ROUTED BELOW FLOOR. CLAMP TO FLOOR AS NECESSARY WITH CLAMP 10497-01-000 OR WIRE TIE 8343-02-000. CLAMPS OR WIRE TIES TO BE LOCATED ABOVE STORAGE AREAS EVERY 500 MM.
- 5. WIRE ROUTED THRU SIDEWALL.
- 6. PAINT EXPOSED SURFACES BLACK WITH 106112-01-000.
- 7. RECP MOUNTED TO BOTTOM SIDE OF UPPER FLOOR.
- 8. SEE WIRING DIAGRAM-BODY FOR ADDITIONAL INFORMATION.
- 9. ALL GROUND WIRES TO BE COVERED WITH TUBING 8041-02-000.
- 10. ALL WIRES ARE TO BE CLAMPED WITH CLAMP 10497-05-000 WITHIN 200 OF OUTLET BOXES AND SPLICES. USE SCREW G67-10-12B OR 39-10-12B.
- 11. ALL WIRE TO BE CLAMPED WITH CLAMP 10495-01-000 OR CLIP 80734-02-000 EVERY 600. USE SCREW G67-10-12B UNLESS OTHERWISE SPECIFIED.

- 14 RCP-B DET-HD BDRM WALL
- 13 RCP-2 (BRN) TV BDRM LH
- 15 RCP-1 (GLD) WASHER/DRY
- GFI-CAN (BRN) GALLEY
- SWITCH WATER HEATER 84420-03-000 LABEL 83588-01-000
- TO RECP-BLANK, VANITY #1 FROM LOAD CENTER (BRN)
- TO RECP-BATH GFI FROM INVERTER BREAKER PANEL (BLU)
- TO RECP-VACUUM FROM LOAD CENTER (YEL)
- TO RECP-REFRIGERATOR FROM LOAD CENTER (YEL-2)
- TO WATER HEATER (WHT) FROM WATER HEATER SWITCH
- TO RECP-BLANK, BDRM WALL (BRN) OR RECP TV BDRM LH (BRN)
- FROM LOAD CENTER
- TO RECP-ENT CTR, FRT
- TO RECP-BLANK BEDROOM
- WATER HEATER RELAY BOX (SEE DETAIL HE)
- TO RECP-BDRM RH RR (BRN) FROM RECP-BDRM LH RR
- 49X BED-QUEEN BACKWALL
- 18 54E WASHER/DRYER COMBINATION.
- 14 42B TV (REAR)-WITHOUT.
- 13 10W TV (REAR)-AC 19" COLOR W/REMOTE.
- 12 WIRE ROUTED THRU FLOOR.

FOR ELECTRICAL TORQUE SPECIFICATIONS SEE DWG NO. 128783-01-000

FOR ELECTRICAL CALLOUTS SEE DWG NO. 121339-01-000

99 038KD
265 CANADIAN HOUSING AND MOTOR VEHICLE STANDARDS
WIRING INSTL-BODY(110150CSA)
SHEET 8 OF 18
128791



- ④ 22T VACUUM SYSTEM-CENTRAL.
- ⑧ WIRE ROUTED BELOW FLOOR. CLAMP TO FLOOR AS NECESSARY WITH CLAMP 10497-01-000 OR WIRE TIE 8343-02-000. CLAMPS OR WIRE TIES TO BE LOCATED ABOVE STORAGE AREAS EVERY 500 MM.
- ② ALL WIRES ARE TO BE CLAMPED WITH CLAMP 10497-05-000 WITHIN 200 OF OUTLET BOXES AND SPLICES, USE SCREW G67-10-12B OR 39-10-12B.
- ⑦ WIRE ROUTED IN SIDEWALL.
- ⑥ WIRE IN SIDEWALL.
- ⑤ WIRE ROUTED THRU SIDEWALL.
- 4. SEE WIRING DIAGRAM-BODY FOR ADDITIONAL INFORMATION.
- 3. ALL GROUND WIRES ARE TO BE COVERED WITH TUBING 8041-02-000.
- 2. ALL WIRES ARE TO BE CLAMPED WITH CLAMP 10495-01-000 OR CLIP 80734-02-000 EVERY 600, USE SCREW G67-10-12B UNLESS OTHERWISE SPECIFIED.
- 1. ALL WIRE TO BE CLAMPED WITH CLAMP 10495-01-000 OR CLIP 80734-02-000 EVERY 600, USE SCREW G67-10-12B UNLESS OTHERWISE SPECIFIED.

NOTES:

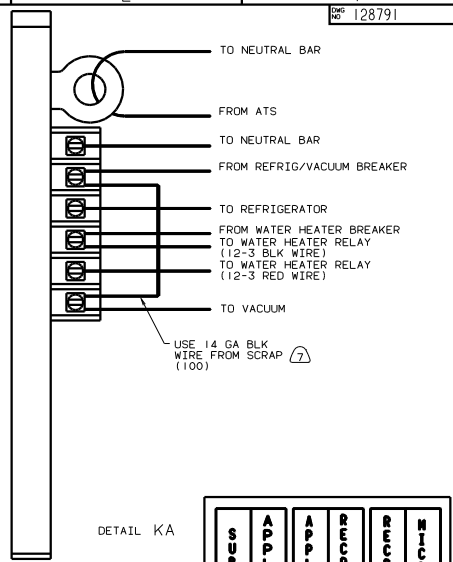
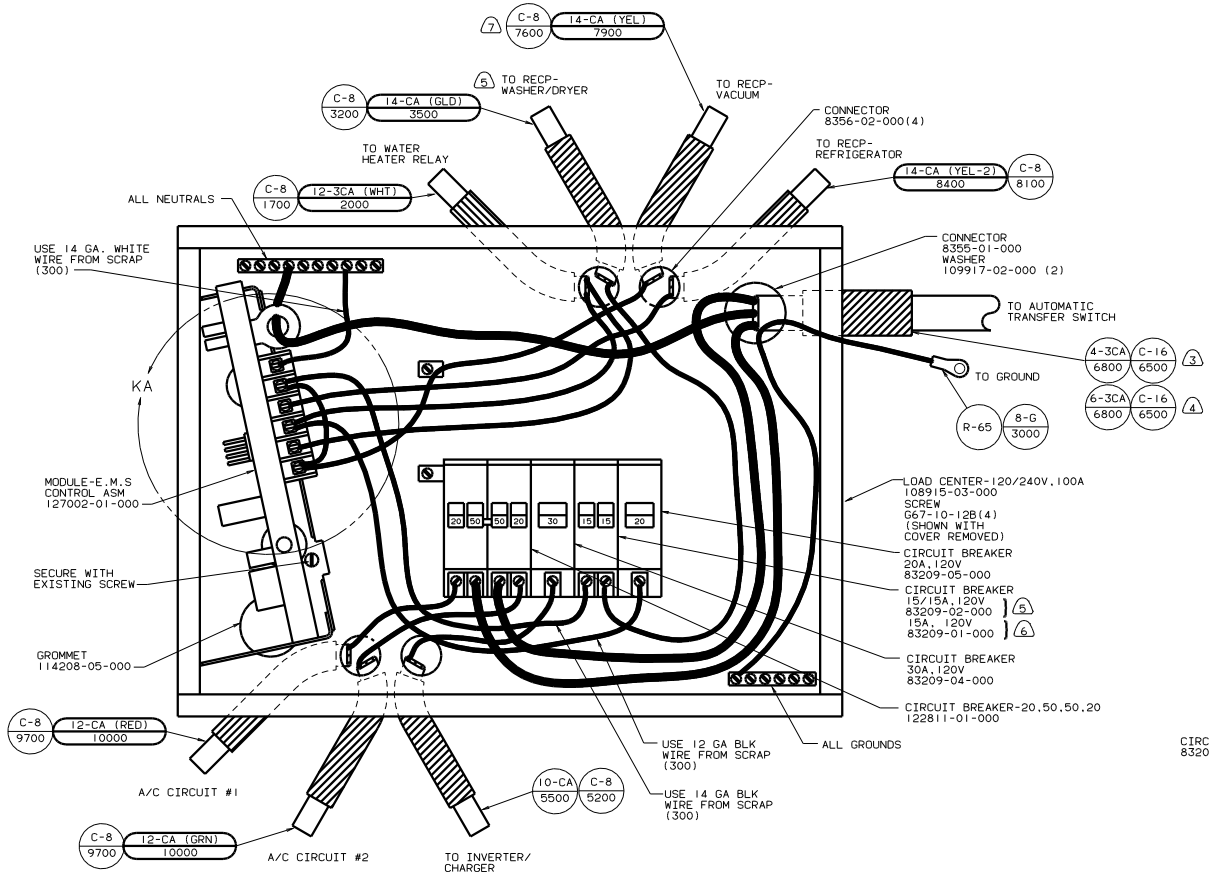
FOR ELECTRICAL TORQUE SPECIFICATIONS SEE DWG NO. 128783-01-000



FOR ELECTRICAL CALLOUTS SEE DWG NO. 121339-01-000

99 038KD
265 CANADIAN HOUSING AND MOTOR VEHICLE STANDARDS

TITLE: WIRING INSTL-BODY (110850CSA)	
DRG NO: 9	OF 18
REV NO: 1	128791



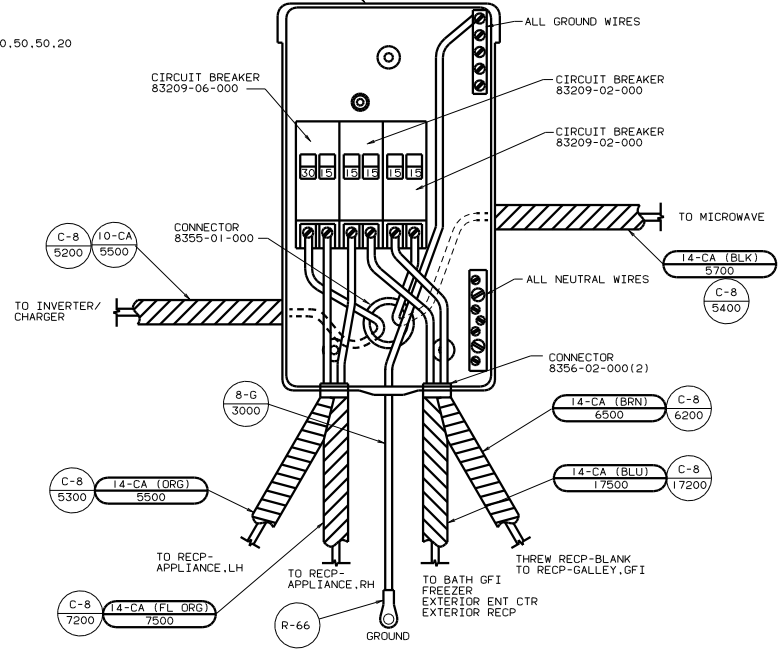
SUB-MAIN	APPLIANCE 1	RECP 1	RECP 2	MICROWAVE
----------	-------------	--------	--------	-----------

LOAD CENTER 109677-01-000
SCREW G67-10-12B (4)
(SHOWN WITH COVER REMOVED)
LABEL 95721-21-000

A/C CIRCUIT 1	MAIN	MAIN	A/C CIRCUIT 2	INVERTER/ CHARGER	REFRIG/VACUUM	WASHER/DRYER	WATER HEATER	
---------------	------	------	---------------	-------------------	---------------	--------------	--------------	--

INSTALL LABEL ON FRONT PANEL BELOW BREAKERS BETWEEN MOUNTING HOLES

LABEL 95721-22-000



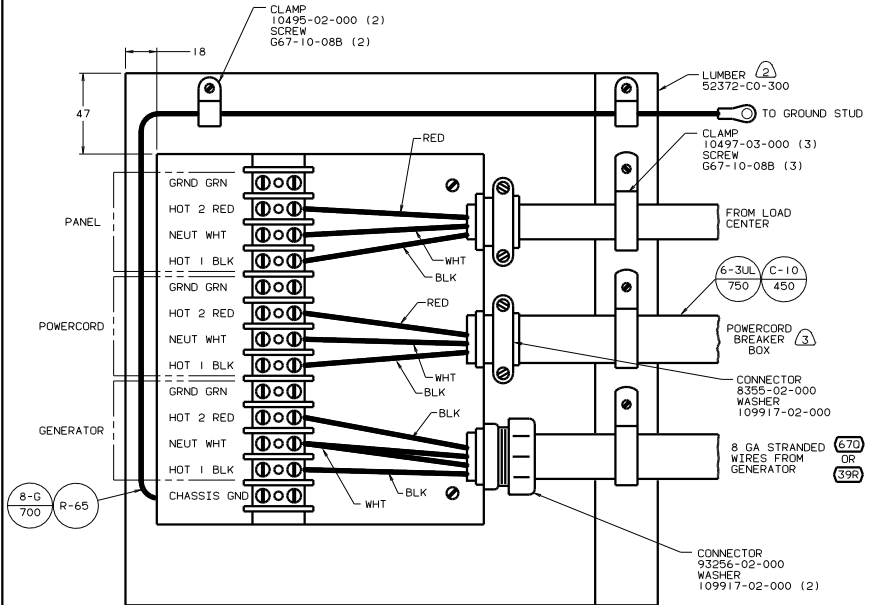
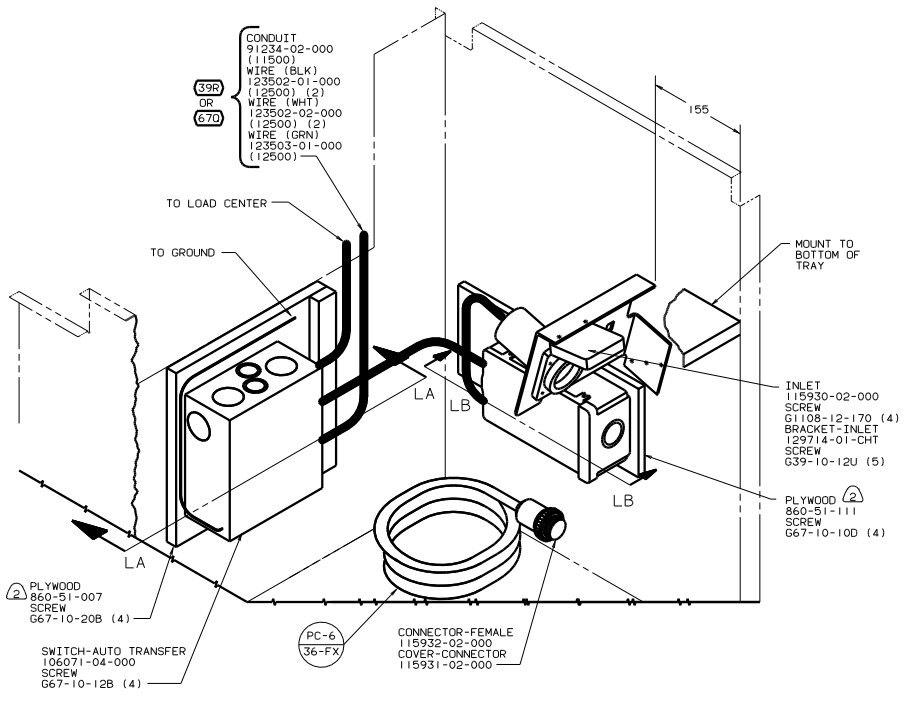
- NOTES:
- 5 54E WASHER/DRYER COMBINATION.
 - 4 39R GEN-6,5KW ONAN LP.
 - 3 670 GEN-7,5KW ONAN O DSL.
 - 2 WIRE MUST BE 700 LONG INSIDE BOX.
 - 22T VACUUM SYSTEM-CENTRAL.
 - 21T WASHER/DRYER WITHOUT.
1. ALL GROUND WIRES TO BE COVERED WITH TUBING 8041-02-000.

FOR ELECTRICAL TORQUE SPECIFICATIONS SEE DWG NO. 128783-01-000

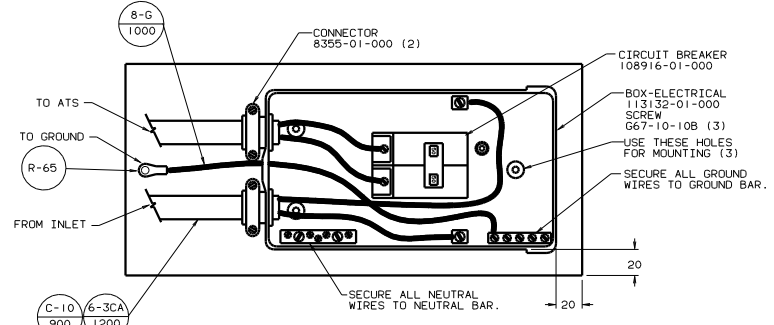
FOR ELECTRICAL CALLOUTS SEE DWG NO. 121339-01-000

99 Q38KD
265 CODE STANDARDS-CSA

WIRING INSTL-BODY (50 LC US)
SHEET 10 OF 18



VIEW LA-LA



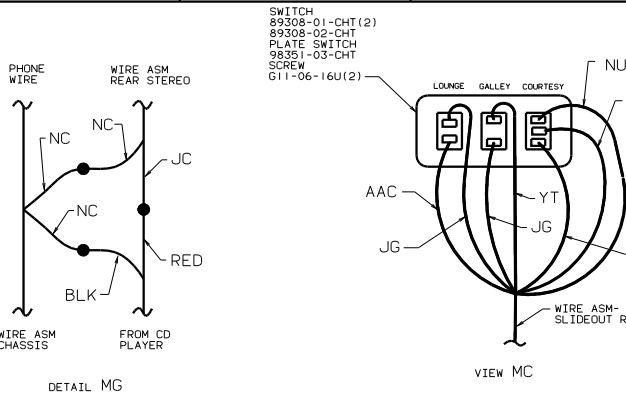
VIEW LB-LB (WITH COVER REMOVED)

- 3 SOLDER DIPP STRIPPED ENDS.
- 2 PAINT EXPOSED SURFACES BLACK WITH 106112-01-000.
- 1. ALL WIRES TO BE CLAMPED WITHIN 200 OF BOX.

- 67D GEN-7.5KW-ONAN-QUIET DIESEL
- 39R GEN-6.5KW-ONAN-LP-MARQUIS
- 265 CODES/STANDARDS-CSA/CMVSS

99 Q38KD 265
 TITLE: WIRING INSTL - BODY (ATS)
 SHEET 11 OF 18

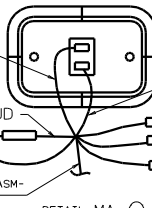
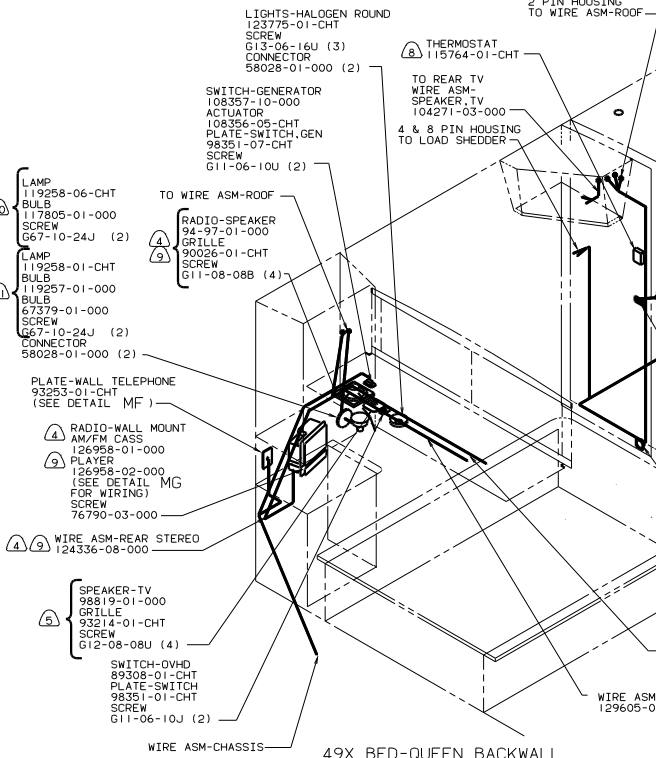
FOR ELECTRICAL TORQUE SPECIFICATIONS SEE DWG NO. 128783-01-000	(X-X)	FOR ELECTRICAL CALLOUTS SEE DWG NO. 121339-01-000
--	-------	---



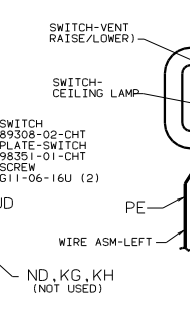
DETAIL MG

VIEW MC

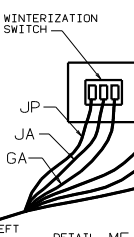
49X BED-QUEEN BACKWALL



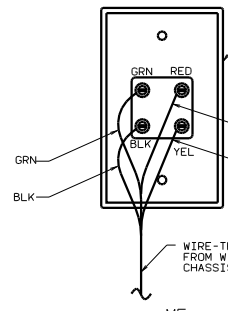
DETAIL MA



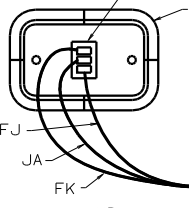
DETAIL MA



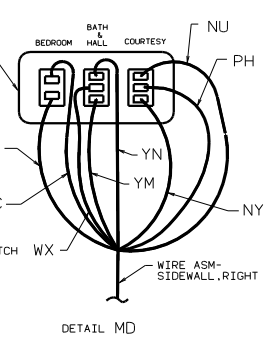
DETAIL ME



DETAIL MF



DETAIL MB



DETAIL MD

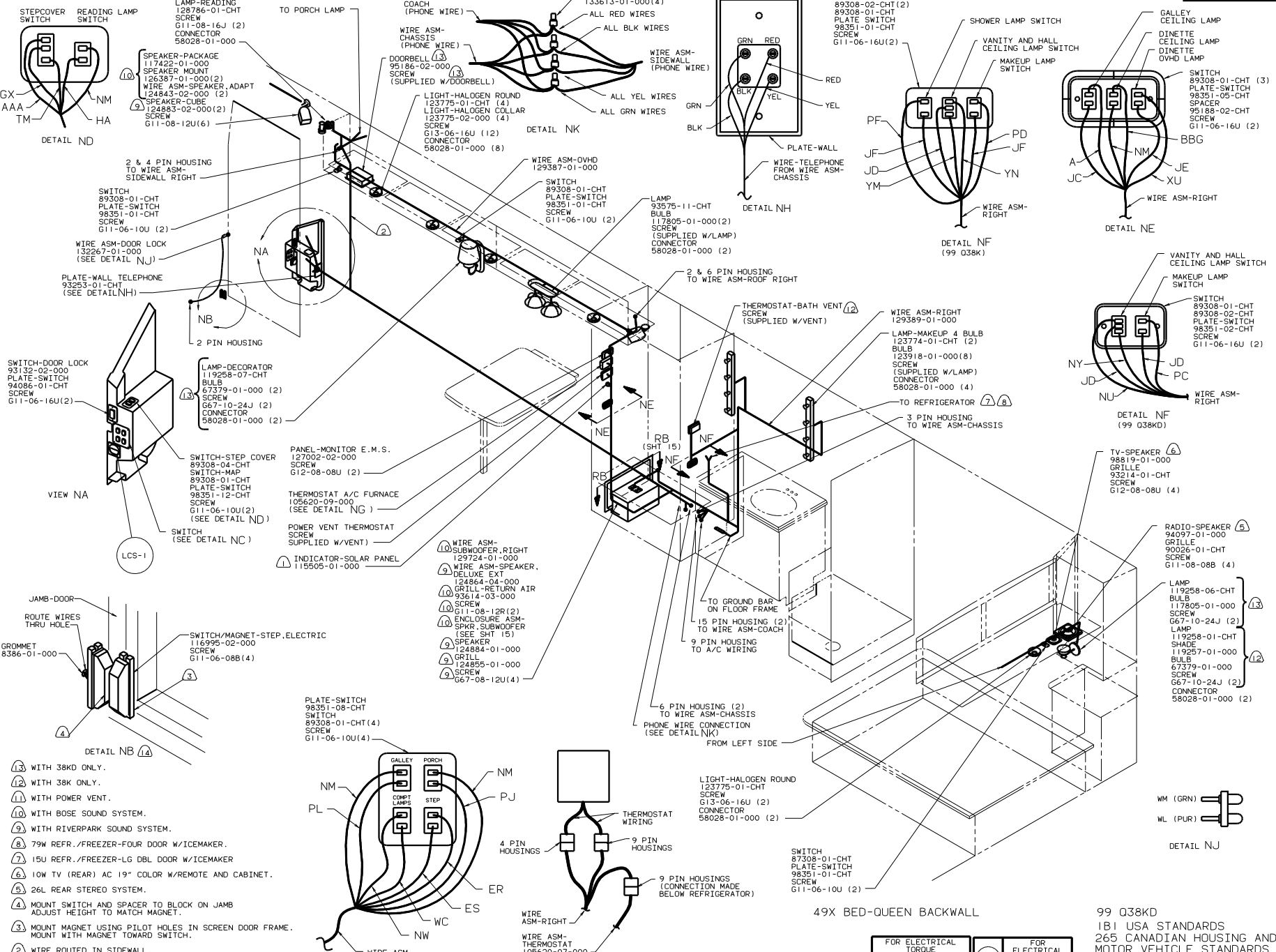
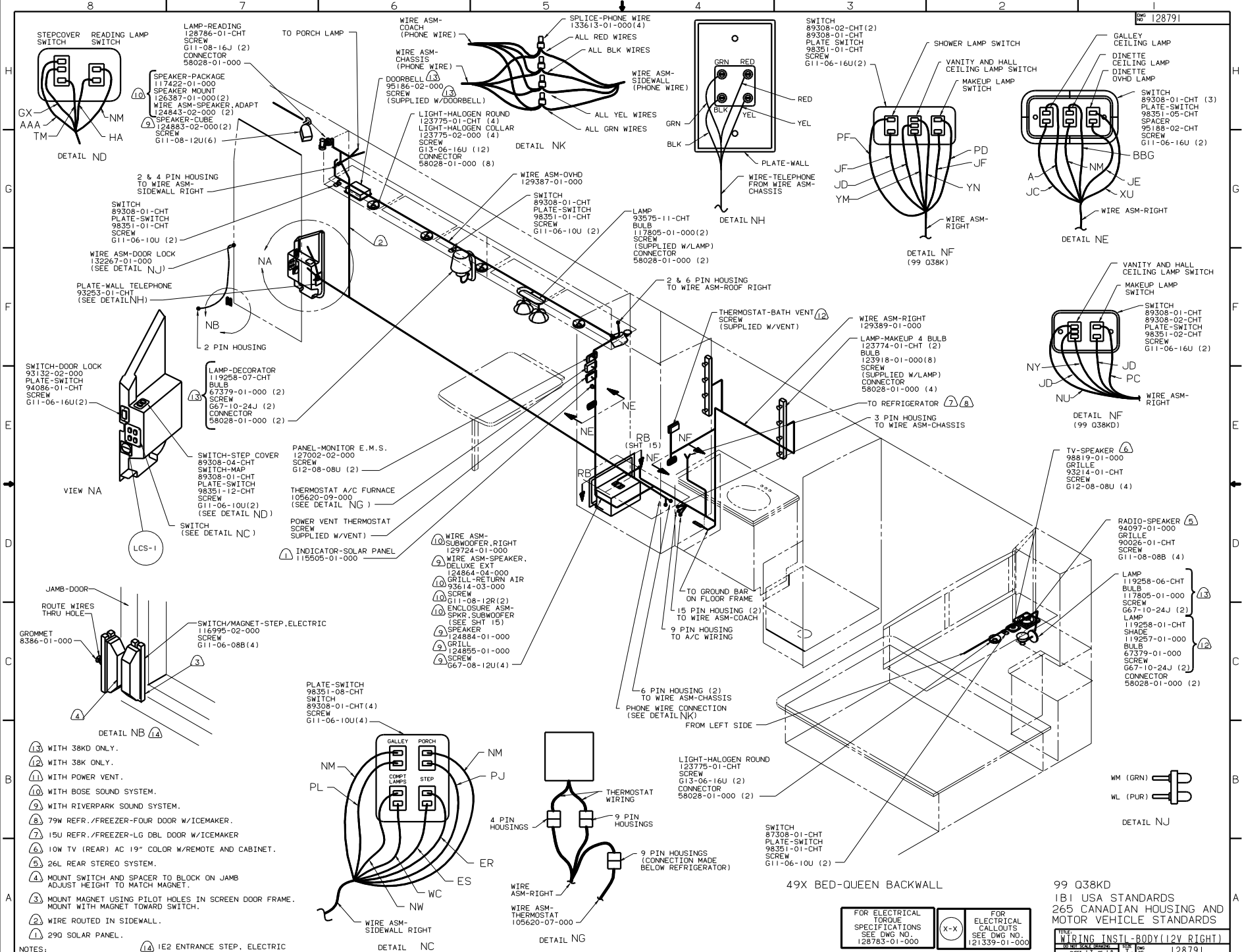
- ⑨ 25E REAR STEREO SYSTEM WITH CD SLAVE.
- ⑧ 106 FURNACE-25.000 BTU.
- ⑦ WITH BOSE SOUND SYSTEM. (21V)
- ⑥ WITH RIVERPARK SOUND SYSTEM. (21V)
- ⑤ 10W AC 19" COLOR W/REMOTE AND CABINET.
- ④ 26L REAR STEREO SYSTEM.
- ③ ADD CONDUIT TO CONTROL WIRE FROM INVERTER TO RISER BELOW FLOOR.
- ② WIRE ROUTED IN SIDEWALL.
- ① 530 WINTERIZING KIT.

- Ⓜ DRILL HOLES IN LIP OF SUBWOOFER AND SCREW DOWN TO FLOOR.
- Ⓝ WITH 38K ONLY.
- Ⓟ WITH 38KD ONLY.

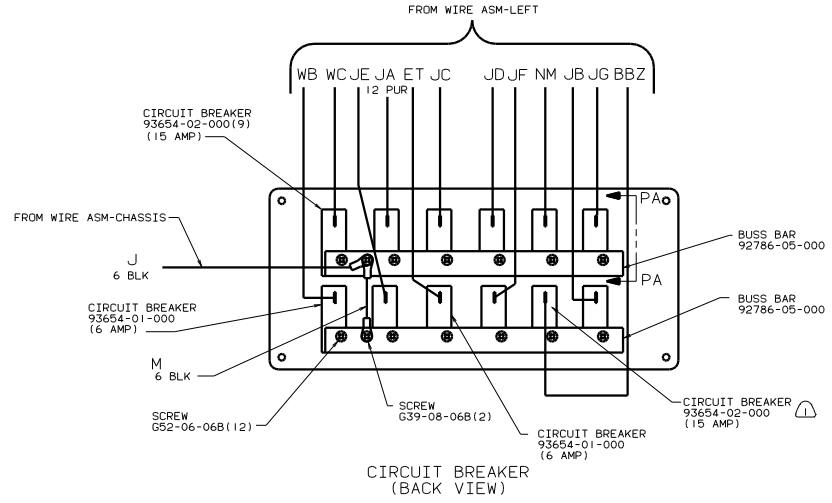
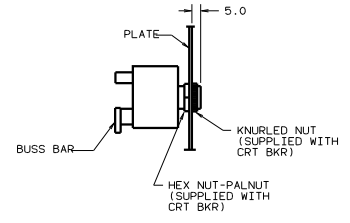
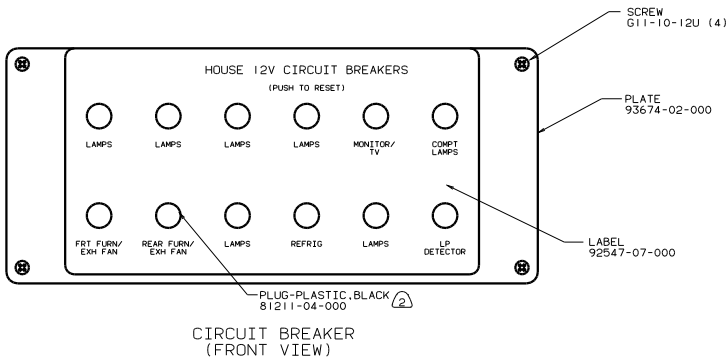
FOR ELECTRICAL TORQUE SPECIFICATIONS SEE DWG NO. 126783-01-000

FOR ELECTRICAL CALLOUTS SEE DWG NO. 121339-01-000

(21V)	SOUND SYSTEM DELUXE
(670)	GEN-7.5KW-ONAN QUIET DIESEL
(39R)	GEN-6.5KW-ONAN-LP-MARQUIS
99 038KD (39R) (670)	
181	USA STANDARDS
265	CANADIAN HOUSING AND MOTOR VEHICLE STANDARDS
TITLE: WIRING INSTL-BODY(12V L)	
NO. OF SHEETS: 22	SHEET 12 OF 18
DATE: 12/11/00	128791



- ⑬ WITH 38KD ONLY.
- ⑫ WITH 38K ONLY.
- ⑪ WITH POWER VENT.
- ⑩ WITH BOSE SOUND SYSTEM.
- ⑨ WITH RIVERPARK SOUND SYSTEM.
- ⑧ 79W REFR./FREEZER-FOUR DOOR W/ICEMAKER.
- ⑦ 15U REFR./FREEZER-LG DBL DOOR W/ICEMAKER
- ⑥ 10W TV (REAR) AC 19" COLOR W/REMOTE AND CABINET.
- ⑤ 26L REAR STEREO SYSTEM.
- ④ MOUNT SWITCH AND SPACER TO BLOCK ON JAMB ADJUST HEIGHT TO MATCH MAGNET.
- ③ MOUNT MAGNET USING PILOT HOLES IN SCREEN DOOR FRAME. MOUNT WITH MAGNET TOWARD SWITCH.
- ② WIRE ROUTED IN SIDEWALL.
- ① 290 SOLAR PANEL.



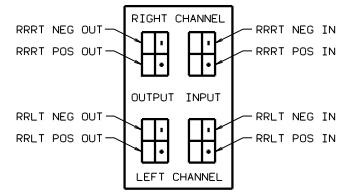
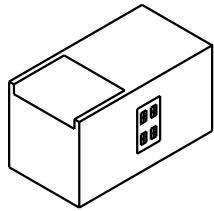
(2) WITHOUT IC6-25.000 BTU OR HALL POWERED VENT.

(1) IC6-25.000 OR HALL POWERED VENT.

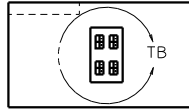
FOR ELECTRICAL TORQUE SPECIFICATIONS SEE DWG NO. 128783-01-000

99 Q38KD
1B1 USA STANDARDS
265 CANADIAN HOUSING AND MOTOR VEHICLE STANDARDS

TITLE		WIRING INSTL-BODY(12 BP)	
DO NOT SCALE DRAWING	REV	DATE	128791
SHEET 14 OF 18	1.E		

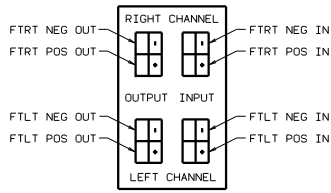
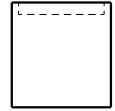


DETAIL TB

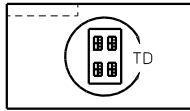


VIEW RB-RB
(SHT 13)

REAR BOSE WOOFER



DETAIL TD



VIEW RA-RA
(SHT 15)

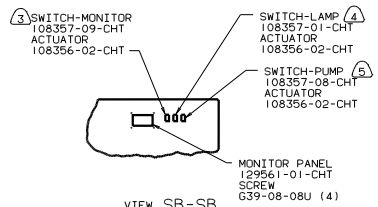
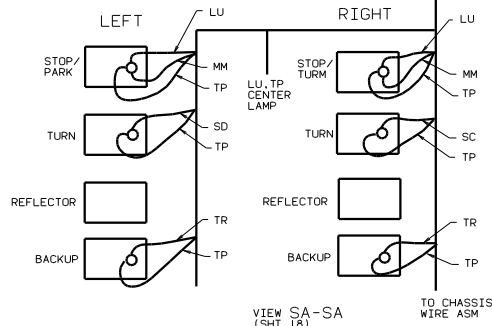
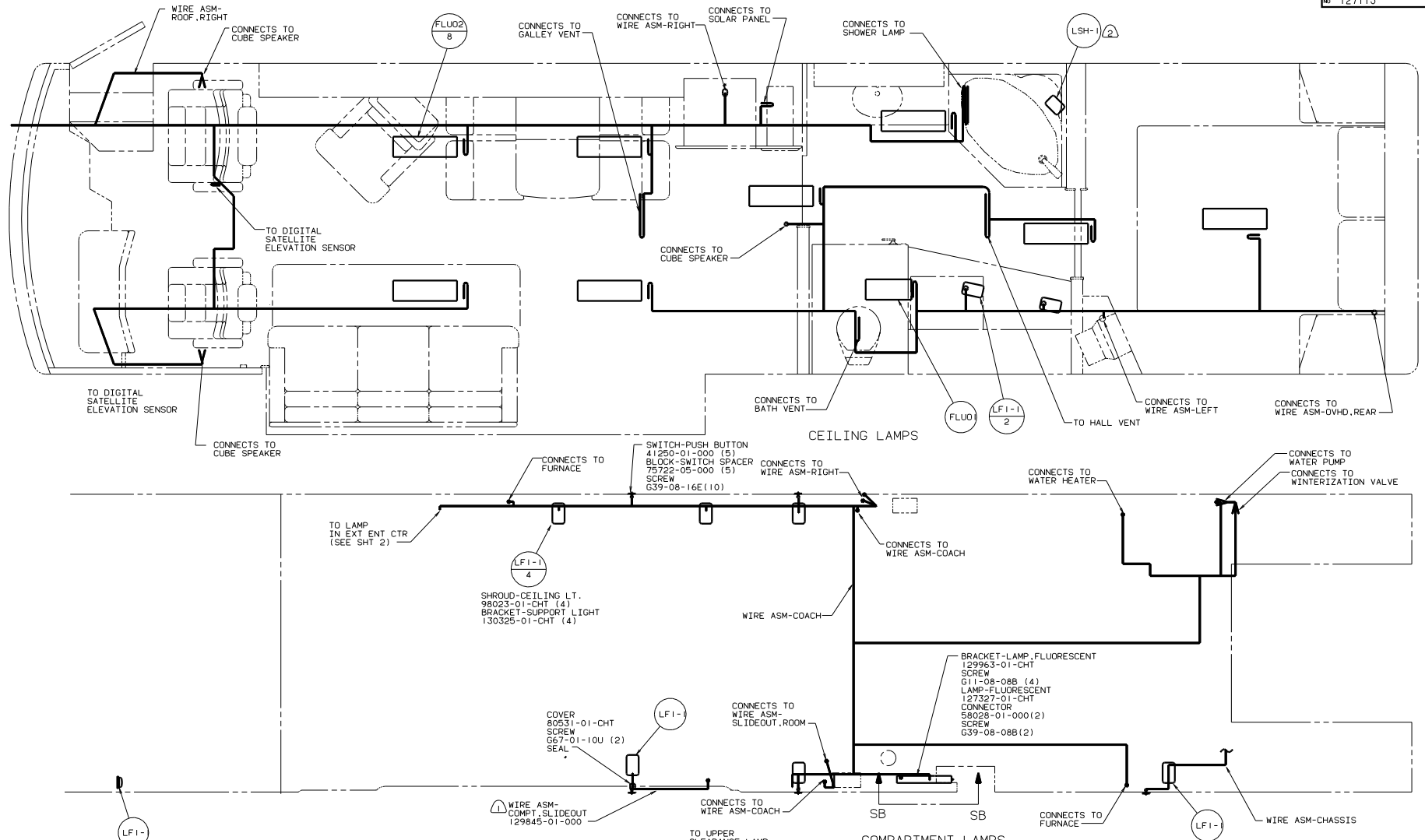
FRONT BOSE WOOFER

NOTES: APPLY ON STRIP OF TAPE-FOAM 90340-01-000 ALONG EACH SIDE OF BRACKET AT ALL POINTS THAT BRACKET CONTACTS WOOFER.

FOR ELECTRICAL TORQUE SPECIFICATIONS SEE DWG NO. 128783-01-000

99 038KD
WOOFER INFORMATION
IBI USA STANDARDS
265 CANDIAN HOUSING AND
MOTOR VEHICLE STANDARDS

TITLE		128791	
WIRING INSTL - BODY (DLX SND)		128791	
DATE	BY	CHKD	APP'D
15	15	15	15
SHEET 15 OF 18		128791	



- NOTES:
- ① CONNECT 8 PIN HOUSING TO SWITCH WITH WIRES FJ (2), FK (2), AF & AG.
 - ② CONNECT 8 PIN HOUSING TO SWITCH WITH WIRES JE & WA.
 - ③ CONNECT 8 PIN HOUSING TO SWITCH WITH WIRES CCR & BBY.
 - ④ WITH 38K ONLY.
 - ⑤ WIRE ROUTED INSIDE OF COMPARTMENT.

FOR ELECTRICAL TORQUE SPECIFICATIONS SEE DWG NO. 128783-01-000

FOR ELECTRICAL CALLOUTS SEE DWG NO. 121339-01-000

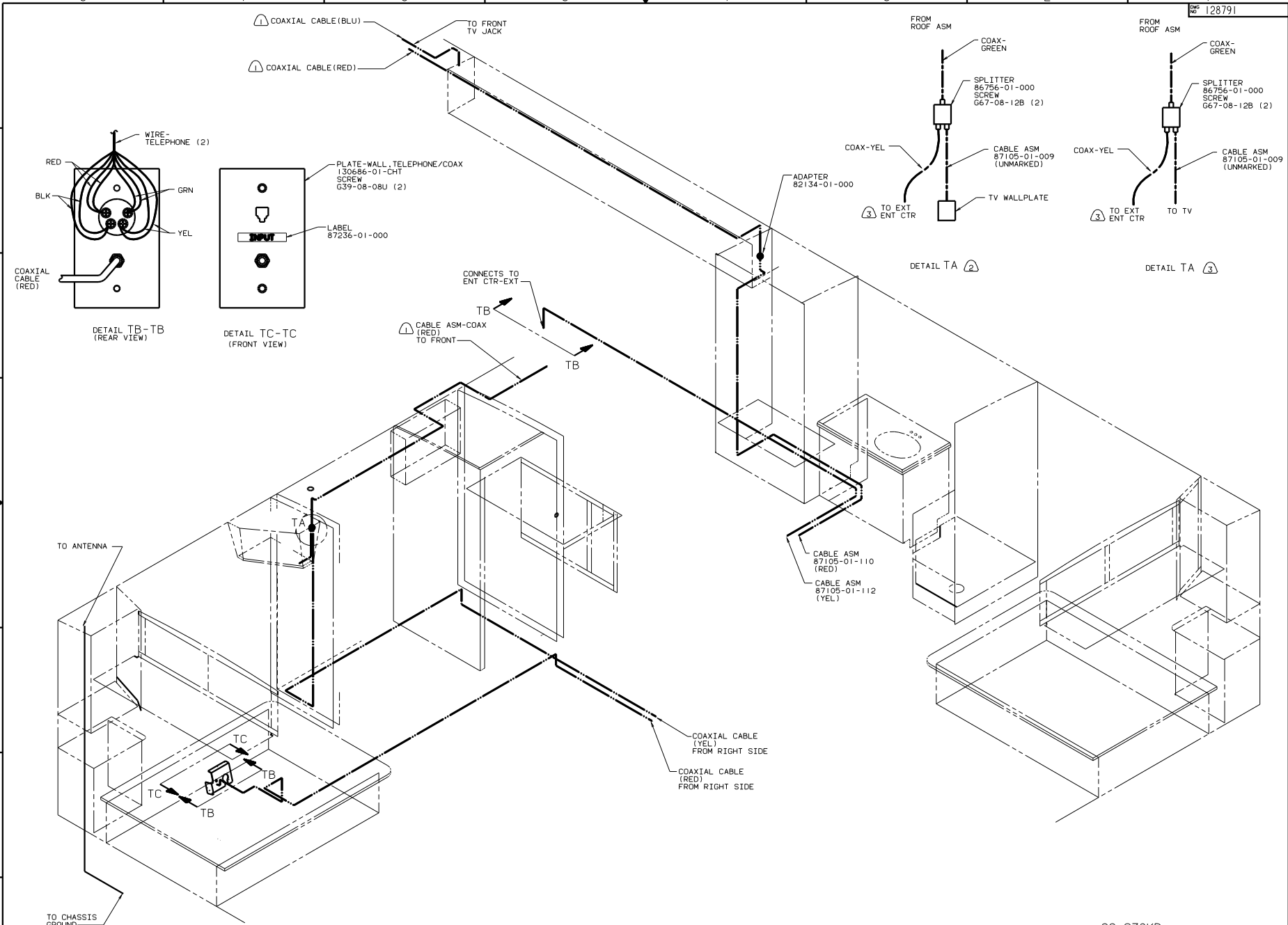
99 Q38KD
COMPARTMENT LAMPS
265 CODE STANDARDS-CSA
1B1 CODE STANDARDS-USA

TITLE: WIRING INSTL-BODY(12 CL)

NO. OF SHEETS: 18

SHEET: 16 OF 18

DATE: 128791



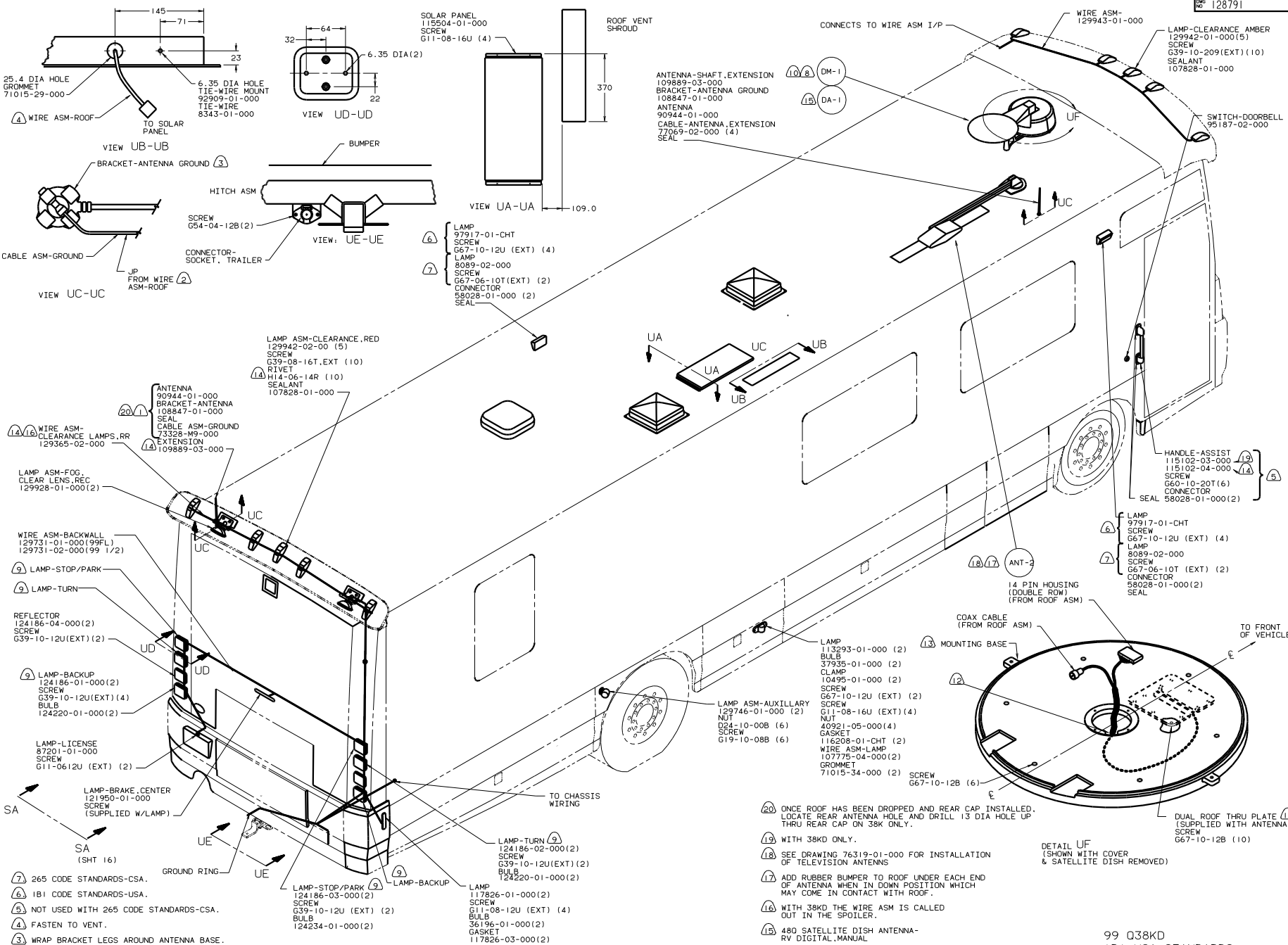
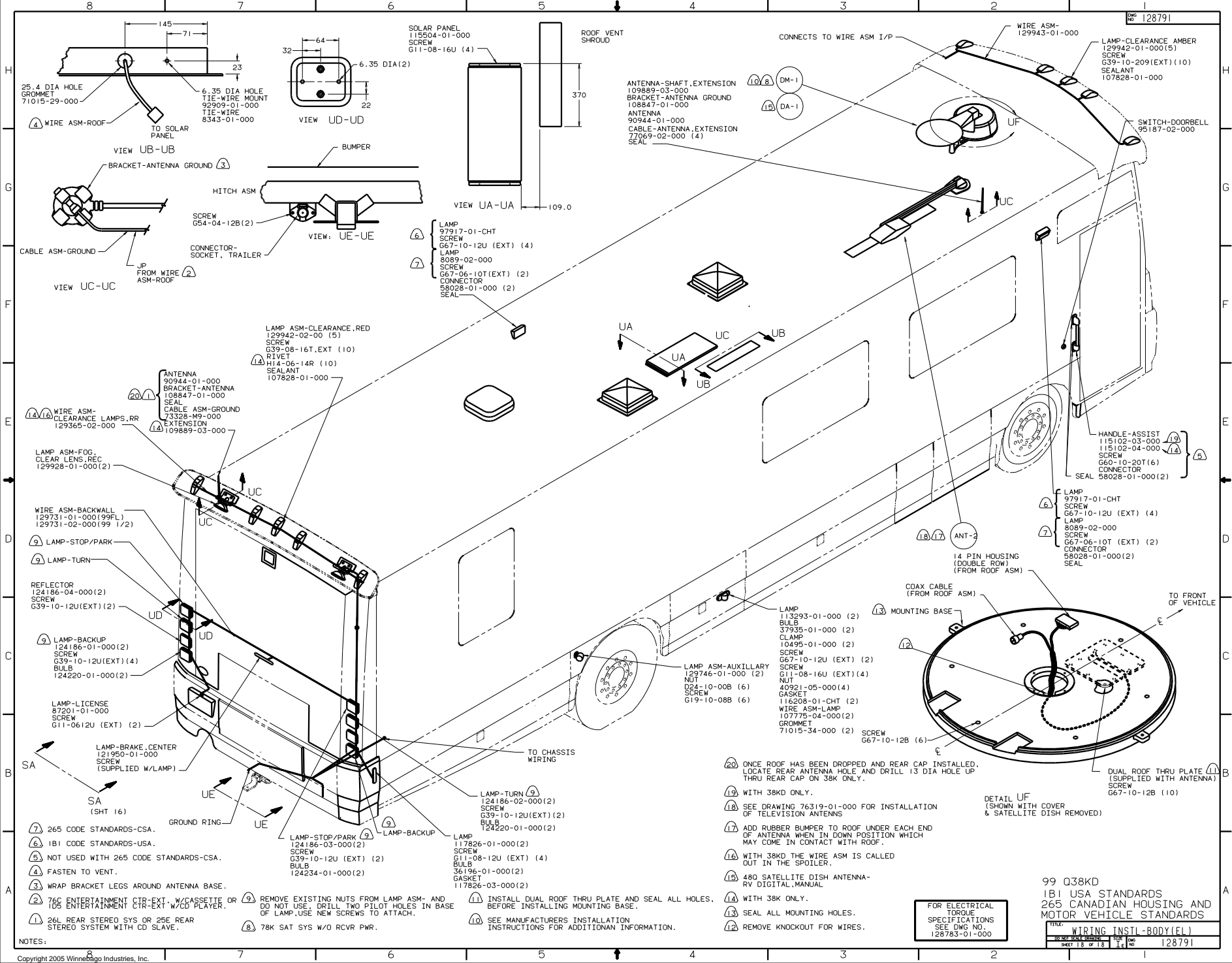
- ③ 10W TV (REAR) - AC 19".
- ② TV (REAR) - WITHOUT.
- ⚠ COAX ROUTED IN ROOF.

NOTES:

FOR ELECTRICAL TORQUE SPECIFICATIONS SEE DWG NO. 128783-01-000

99 Q38KD
 1B1 USA STANDARDS
 265 CANADIAN HOUSING AND MOTOR VEHICLE STANDARDS

TITLE: WIRING INSTL - BODY (COAX)	
NO. OF SHEETS: 18	SHEET NO. 17
DATE: 1/16/05	DWG. NO. 128791



- NOTES:**
- 1 265 CODE STANDARDS-CSA.
 - 2 1B1 CODE STANDARDS-USA.
 - 3 NOT USED WITH 265 CODE STANDARDS-CSA.
 - 4 FASTEN TO VENT.
 - 5 WRAP BRACKET LEGS AROUND ANTENNA BASE.
 - 6 76C ENTERTAINMENT CIR-EXT, W/CASSETTE OR 105 ENTERTAINMENT CIR-EXT W/CD PLAYER.
 - 7 26L REAR STEREO SYS OR 25E REAR STEREO SYSTEM WITH CD SLAVE.
 - 8 78K SAT SYS W/O RCVR PWR.
 - 9 REMOVE EXISTING NUTS FROM LAMP ASM- AND DO NOT USE. DRILL TWO PILOT HOLES IN BASE OF LAMP, USE NEW SCREWS TO ATTACH.
 - 10 78K SAT SYS W/O RCVR PWR.
 - 11 INSTALL DUAL ROOF THRU PLATE AND SEAL ALL HOLES, BEFORE INSTALLING MOUNTING BASE.
 - 12 SEE MANUFACTURERS INSTALLATION INSTRUCTIONS FOR ADDITIONAL INFORMATION.
 - 13 ONCE ROOF HAS BEEN DROPPED AND REAR CAP INSTALLED, LOCATE REAR ANTENNA HOLE AND DRILL 13 DIA HOLE UP THRU REAR CAP ON 38K ONLY.
 - 14 WITH 38KD ONLY.
 - 15 SEE DRAWING 76319-01-000 FOR INSTALLATION OF TELEVISION ANTENNS
 - 16 ADD RUBBER BUMPER TO ROOF UNDER EACH END OF ANTENNA WHEN IN DOWN POSITION WHICH MAY COME IN CONTACT WITH ROOF.
 - 17 WITH 38KD THE WIRE ASM IS CALLED OUT IN THE SPOILER.
 - 18 480 SATELLITE DISH ANTENNA- RY DIGITAL MANUAL
 - 19 WITH 38K ONLY.
 - 20 SEAL ALL MOUNTING HOLES.
 - 21 REMOVE KNOCKOUT FOR WIRES.

FOR ELECTRICAL TORQUE SPECIFICATIONS SEE DWG NO. 128783-01-000

99 038KD
1B1 USA STANDARDS
265 CANADIAN HOUSING AND MOTOR VEHICLE STANDARDS

FILE: **WIRING INSTL-BODY(FL)**
SHEET 18 OF 18