



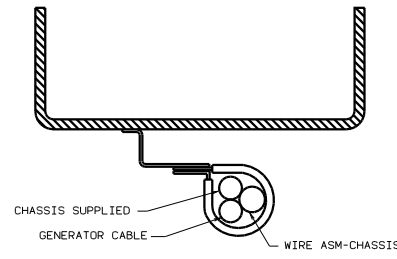
DANGER

Danger of electrical shock, burns or death. Always remove all power sources before attempting any repair, service or diagnostic work. Power can be present from shore power, generator, inverter or battery. All power sources must be disabled and secured before performing any service.

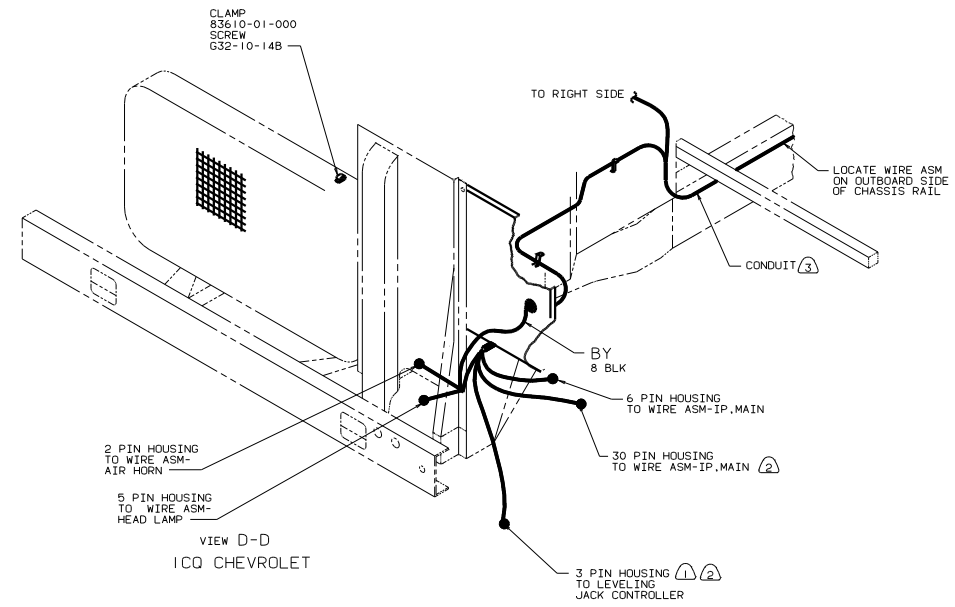


CAUTION

If you lack the skills, tools or equipment to perform diagnostic or repair work leave such work to an authorized Winnebago Industries dealer or other qualified shop.



VIEW C-C



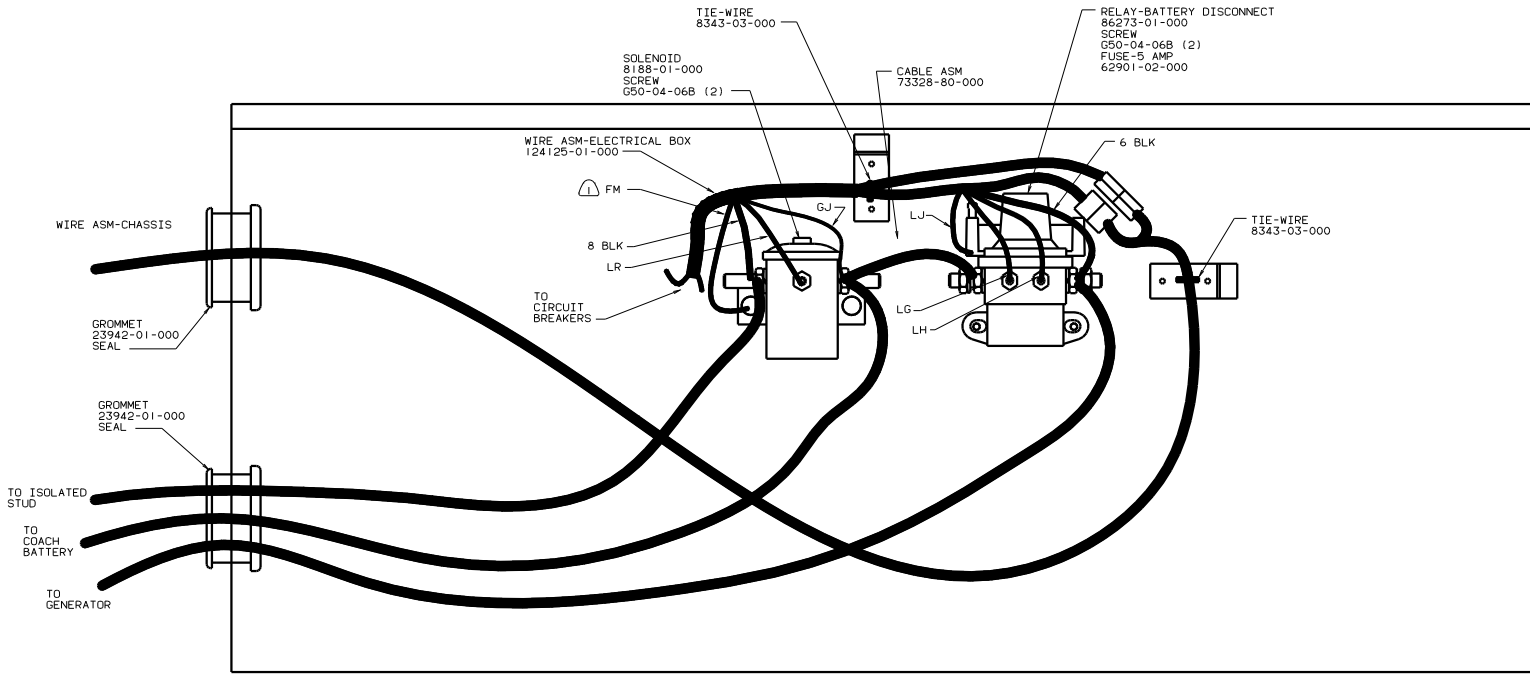
- (3) COVER WITH CONDUIT 41953-10-000 AND 41953-11-000 AS REQUIRED.
- (2) FOR ADDITIONAL INFORMATION SEE WIRING INSTALLATION FRONT END.
- (1) SEE HYDRAULIC LEVELING SYSTEM FOR ADDITIONAL INFORMATION.

NOTES:

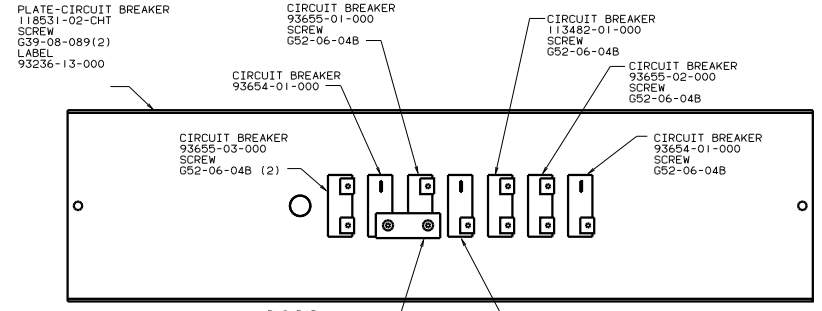
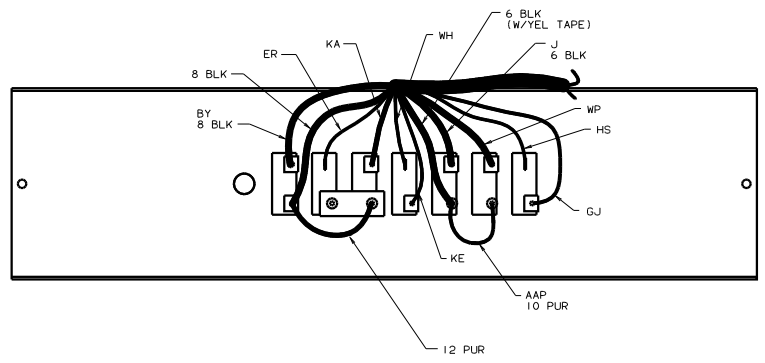
FOR ELECTRICAL TORQUE SPECIFICATIONS SEE DWG NO. 128783-01-000

99 M39Y
1B1 USA STANDARDS
265 CANADIAN HOUSING AND MOTOR VEHICLE STANDARDS

| | |
|-----------------------------|-----------|
| TITLE: WIRING INSTL-CHASSIS | |
| NO. OF SHEETS | TOTAL NO. |
| SHEET 2 OF 3 | 16 |
| DWG NO. 128555 | |



VIEW H-H



VIEW G-G (HARDWARE)

NOTES: SECURE WITH SOLENOID MOUNTING SCREW.

FOR ELECTRICAL TORQUE SPECIFICATIONS SEE DWG NO. 128783-01-000

99 M39Y
 1B1 USA STANDARDS
 265 CANADIAN HOUSING AND MOTOR VEHICLE STANDARDS

| | | | |
|---------|----------|----------------------|-------|
| TITLE | | WIRING INSTL-CHASSIS | |
| 30 | NO SCALE | 1/8" | 1/16" |
| SHEET 3 | OF 3 | 1 | 2 |