



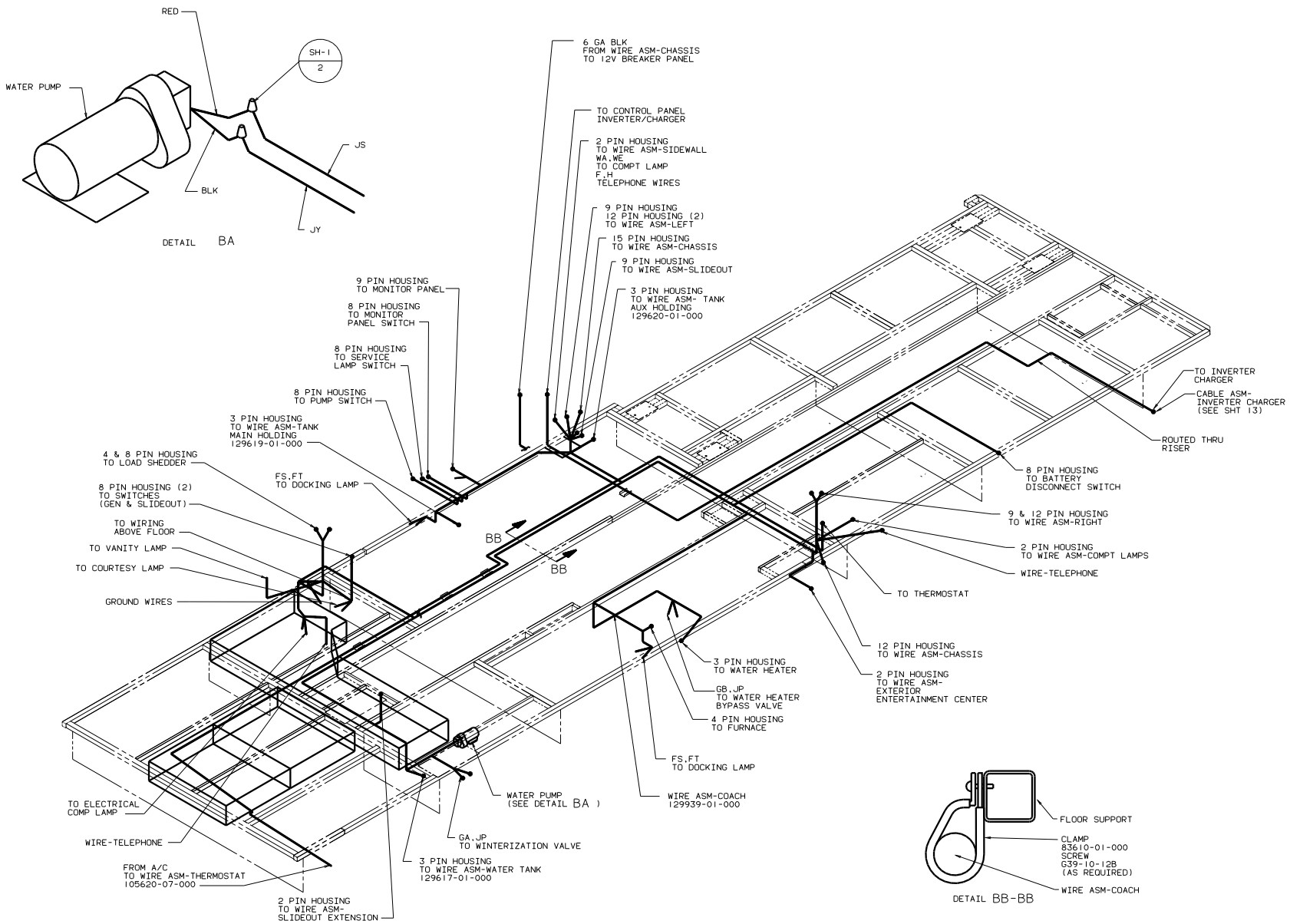
DANGER

Danger of electrical shock, burns or death. Always remove all power sources before attempting any repair, service or diagnostic work. Power can be present from shore power, generator, inverter or battery. All power sources must be disabled and secured before performing any service.



CAUTION

If you lack the skills, tools or equipment to perform diagnostic or repair work leave such work to an authorized Winnebago Industries dealer or other qualified shop.



3. WIRES THAT REST ON WIRE TRAYS ARE TO BE TIES DOWN WITH WIRE TIE 8343-02-000.
2. CLAMP TO FLOOR SUPPORT TUBES AS NECESSARY WITH CLAMP 10497-01-000.
1. ALL WIRES TO BE CLAMPED WITH CLAMP 10495-01-000 OR CLIP 80734-02-000 EVERY 700. USE SCREW G67-10-12B UNLESS OTHERWISE SPECIFIED.

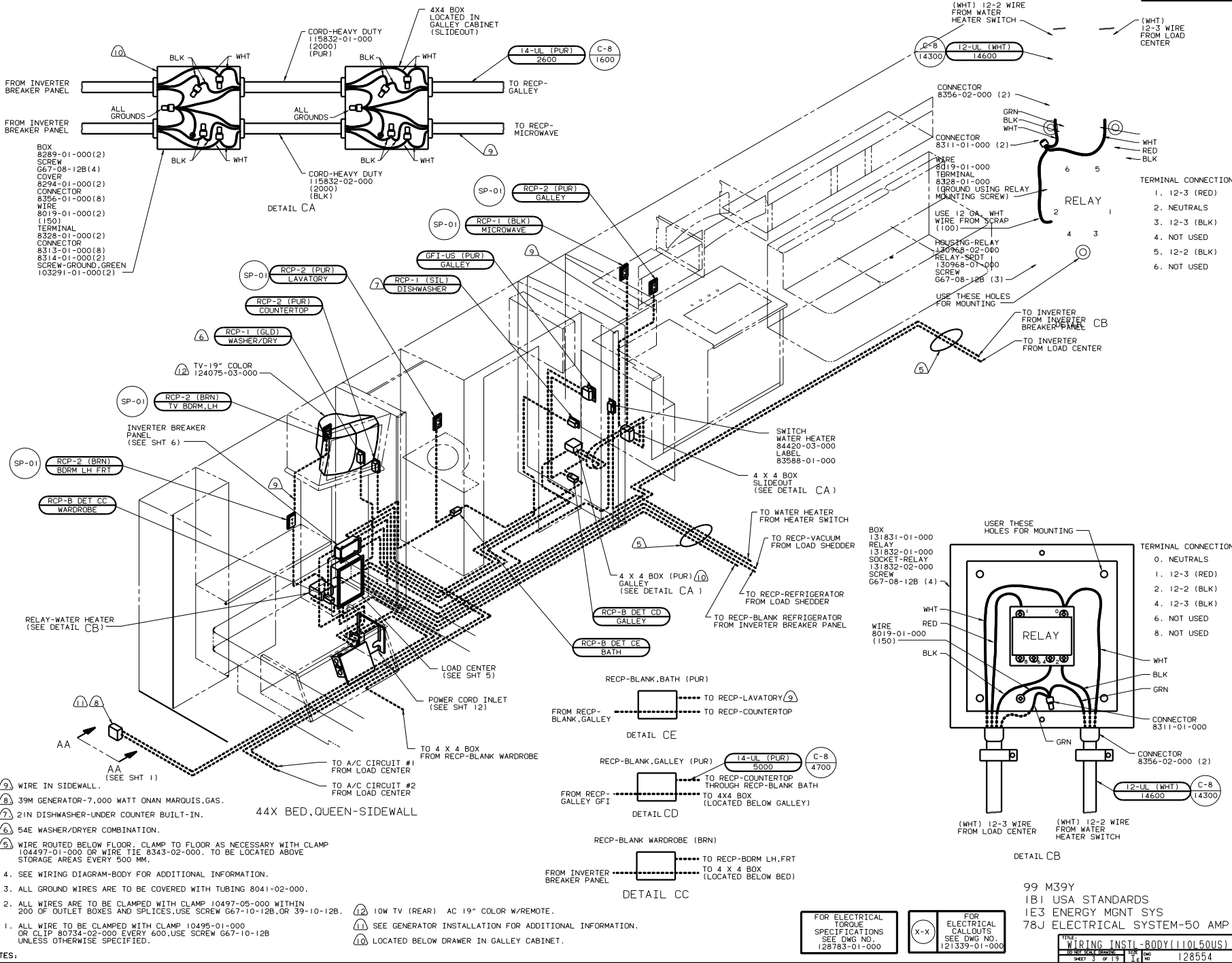
NOTES:

FOR ELECTRICAL TORQUE SPECIFICATIONS SEE DWG NO. 128783-01-000

(X-X) FOR ELECTRICAL CALLOUTS SEE DWG NO. 121339-01-000

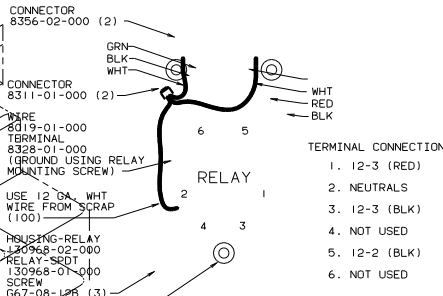
99 M39Y
 1B1 USA STANDARDS
 265 CANADIAN HOUSING AND MOTOR VEHICLE STANDARDS

FILE NO.	128554
WIRING INSTL-BODY(BL 12V)	
SHEET 2 OF 19	1 E



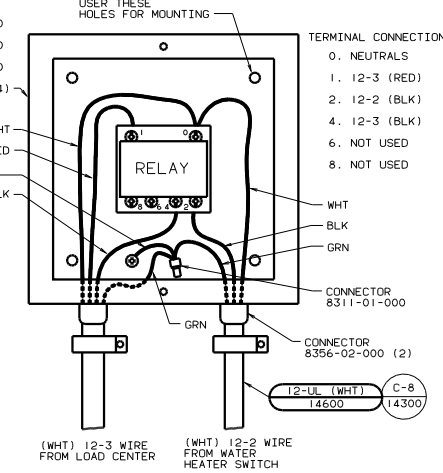
- BOX 8289-01-000(2)
- SCREW 667-08-12B(4)
- COVER 8294-01-000(2)
- CONNECTOR 8356-01-000(8)
- WIRE 8019-01-000(2)
- TERMINAL 8328-01-000(2)
- CONNECTOR 8313-01-000(8)
- 8314-01-000(2)
- SCREW-GROUND, GREEN 103291-01-000(2)

DETAIL CA



RELAY

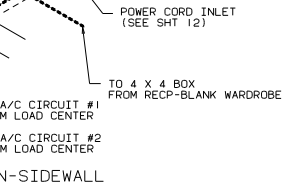
- TERMINAL CONNECTION
- 12-3 (RED)
 - 12-3 (BLK)
 - 12-3 (BLK)
 - 12-3 (BLK)
 - 12-2 (BLK)
 - 12-2 (BLK)



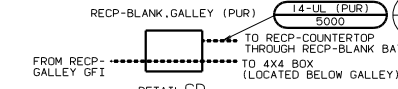
RELAY

- TERMINAL CONNECTION
- NEUTRALS
 - 12-3 (RED)
 - 12-2 (BLK)
 - 12-3 (BLK)
 - 12-3 (BLK)
 - 12-3 (BLK)
 - 12-3 (BLK)

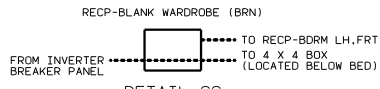
- NOTES:
1. ALL WIRE TO BE CLAMPED WITH CLAMP 10495-01-000 OR CLIP 80734-02-000 EVERY 600. USE SCREW 667-10-12B UNLESS OTHERWISE SPECIFIED.
 2. ALL WIRES ARE TO BE CLAMPED WITH CLAMP 10497-05-000 WITHIN 200 OF OUTLET BOXES AND SPLICES. USE SCREW 667-10-12B, OR 39-10-12B.
 3. ALL GROUND WIRES ARE TO BE COVERED WITH TUBING 8041-02-000.
 4. SEE WIRING DIAGRAM-BODY FOR ADDITIONAL INFORMATION.
 5. WIRE ROUTED BELOW FLOOR. CLAMP TO FLOOR AS NECESSARY WITH CLAMP 104497-01-000 OR WIRE TIE 8343-02-000. TO BE LOCATED ABOVE STORAGE AREAS EVERY 500 MM.
 6. 54E WASHER/DRYER COMBINATION.
 7. 21N DISHWASHER-UNDER COUNTER BUILT-IN.
 8. 39M GENERATOR-7,000 WATT ONAN MARQUIS, GAS.
 9. WIRE IN SIDEWALL.



DETAIL CE



DETAIL CD

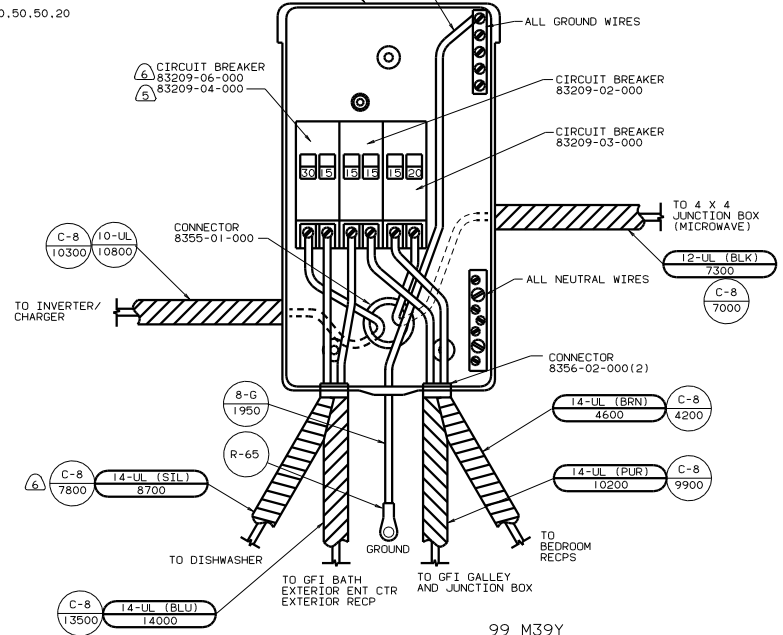
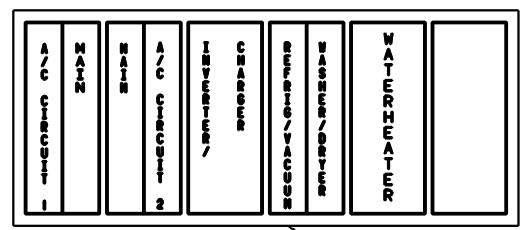
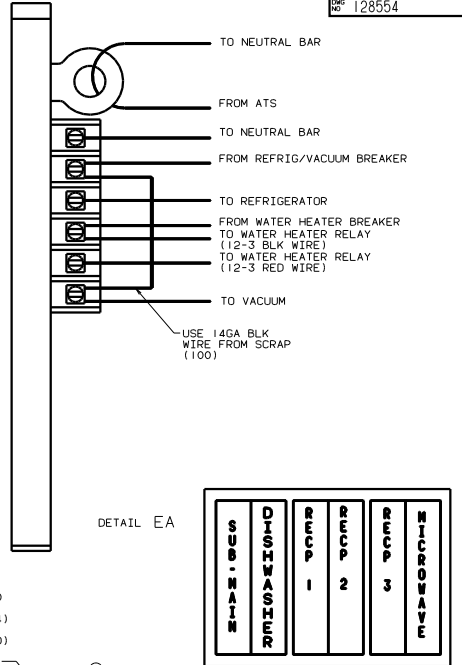
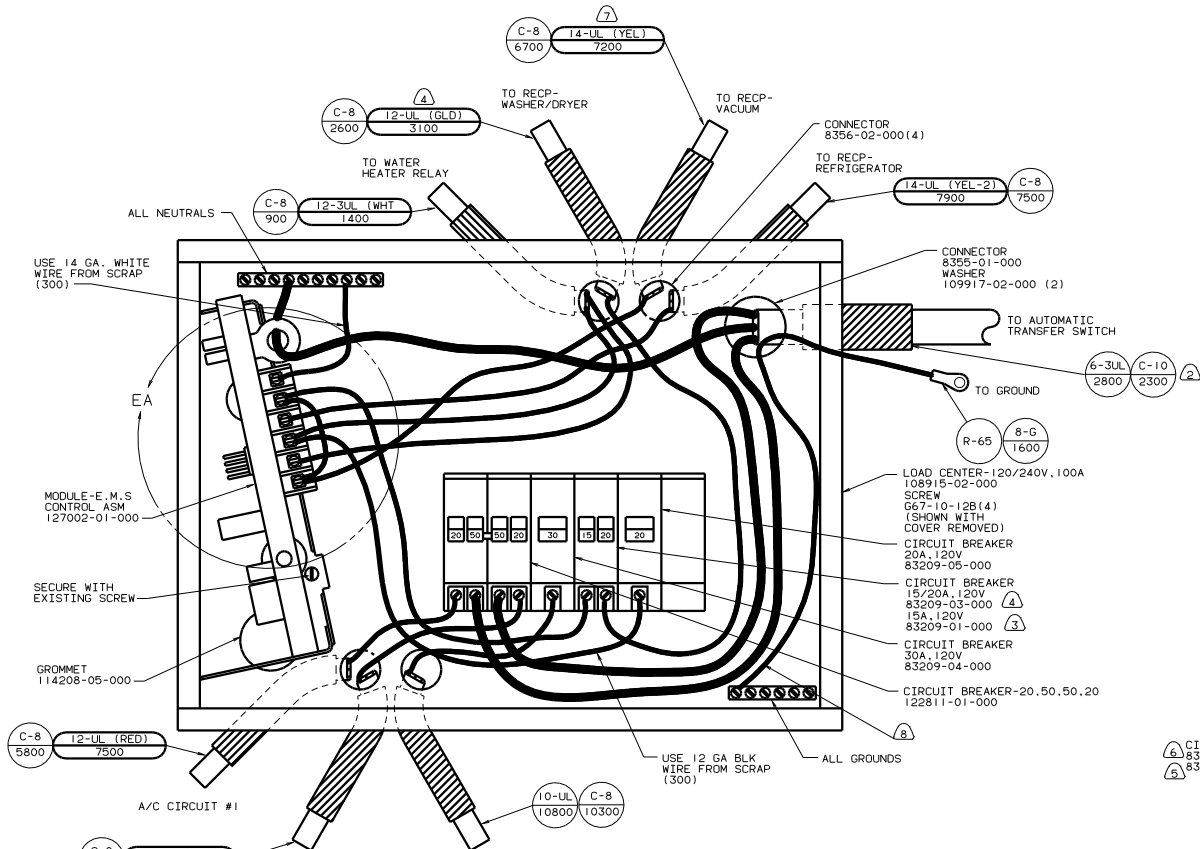


DETAIL CC

FOR ELECTRICAL TORQUE SPECIFICATIONS SEE DWG NO. 128783-01-000

FOR ELECTRICAL CALLOUTS SEE DWG NO. 121339-01-000

99 M39Y
 1B1 USA STANDARDS
 IE3 ENERGY MGMT SYS
 78J ELECTRICAL SYSTEM-50 AMP



INSTALL LABEL ON FRONT PANEL BELOW BREAKERS BETWEEN MOUNTING HOLES LABEL 95721-22-000

1. ALL GROUND WIRES TO BE COVERED WITH TUBING 8041-02-000. 2. 22T VACUUM CLEANER CENTRAL.

3. WIRE WITHOUT TERMINAL TO BE STRIPPER 10 AND SOLDER DIPPED.

4. 54E WASHER/DRYER-COMBINATION.

5. 215 DISHWASHER-WITHOUT.

6. 21N DISHWASHER-BUILT IN.

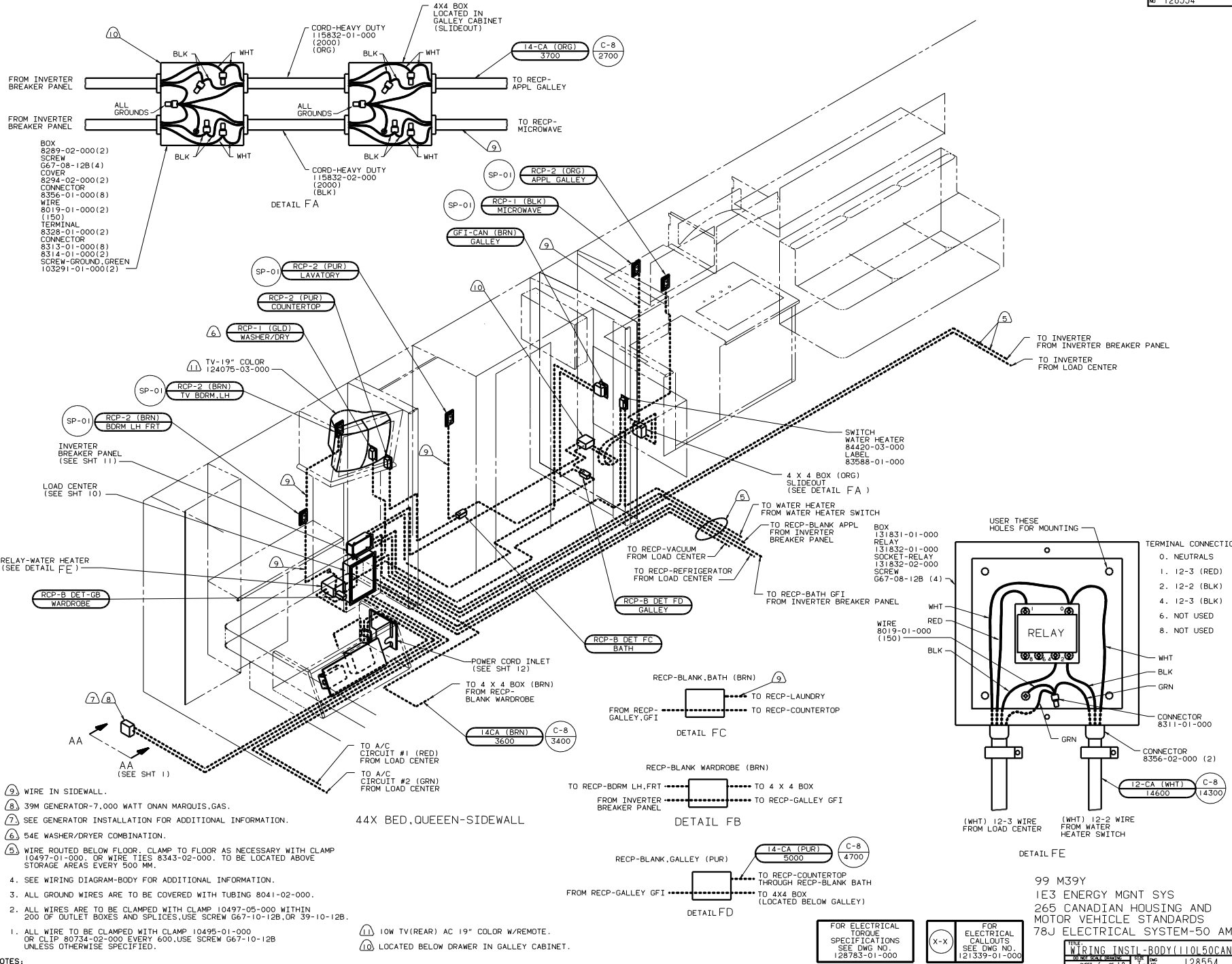
NOTES:

FOR ELECTRICAL TORQUE SPECIFICATIONS SEE DWG NO. 128783-01-000

FOR ELECTRICAL CALLOUTS SEE DWG NO. 121339-01-000

99 M39Y
1E1 USA STANDARDS
1E3 ENERGY MGMT SYS
78J ELECTRICAL SYSTEM 50-AMP

WIRING INSTL-BODY (IC CC USA)
SHEET 5 OF 19



- 9. WIRE IN SIDEWALL.
- 8. 39M GENERATOR-7,000 WATT ONAN MARQUIS, GAS.
- 7. SEE GENERATOR INSTALLATION FOR ADDITIONAL INFORMATION.
- 6. 54E WASHER/DRYER COMBINATION.
- 5. WIRE ROUTED BELOW FLOOR. CLAMP TO FLOOR AS NECESSARY WITH CLAMP 10497-01-000. OR WIRE TIES 8343-02-000. TO BE LOCATED ABOVE STORAGE AREAS EVERY 500 MM.
- 4. SEE WIRING DIAGRAM-BODY FOR ADDITIONAL INFORMATION.
- 3. ALL GROUND WIRES ARE TO BE COVERED WITH TUBING 8041-02-000.
- 2. ALL WIRES ARE TO BE CLAMPED WITH CLAMP 10497-05-000 WITHIN 200 OF OUTLET BOXES AND SPLICES. USE SCREW 067-10-12B, OR 39-10-12B.
- 1. ALL WIRE TO BE CLAMPED WITH CLAMP 10495-01-000 OR CLIP 80734-02-000 EVERY 600. USE SCREW 067-10-12B UNLESS OTHERWISE SPECIFIED.

44X BED, QUEEN-SIDEWALL

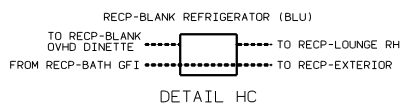
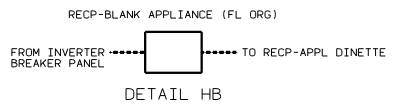
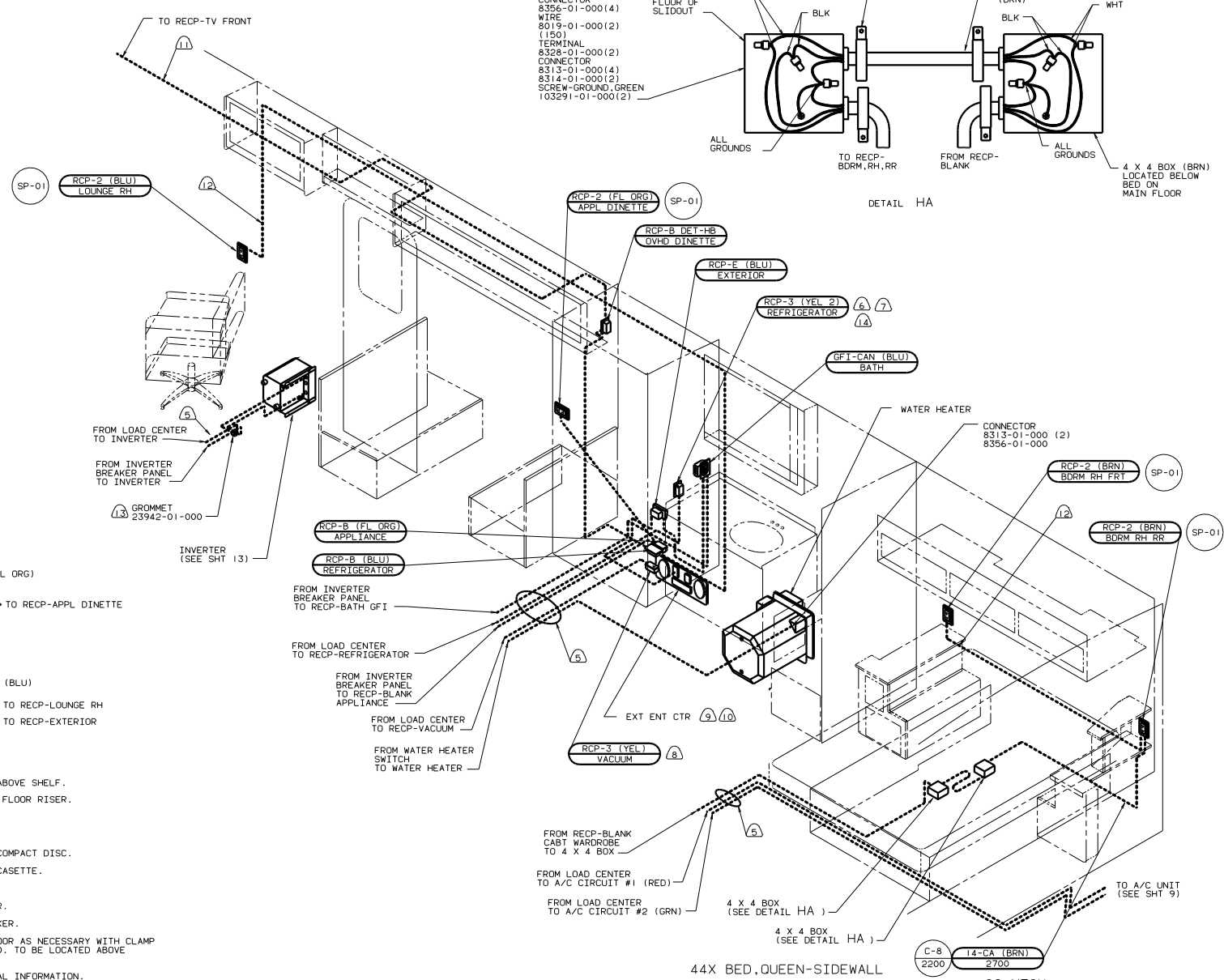
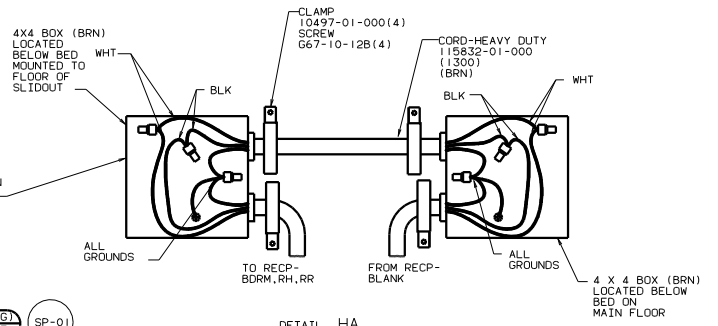
- 11. 10W TV (REAR) AC 19" COLOR W/REMOTE.
- 10. LOCATED BELOW DRAWER IN GALLEY CABINET.

FOR ELECTRICAL TORQUE SPECIFICATIONS SEE DWG NO. 128783-01-000

X-X FOR ELECTRICAL CALLOUTS SEE DWG NO. 121339-01-000

99 M39Y
IE3 ENERGY MGNT SYS
265 CANADIAN HOUSING AND MOTOR VEHICLE STANDARDS
78J ELECTRICAL SYSTEM-50 AMP

- BOX 8289-02-000(2)
- SCREW G67-08-12B(4)
- COVER 8294-02-000(2)
- CONNECTOR 8356-01-000(4)
- WIRE 8019-01-000(2)
- TERMINAL (150)
- CONNECTOR 8328-01-000(2)
- CONNECTOR 8313-01-000(4)
- 8314-01-000(2)
- SCREW-GROUND, GREEN 103291-01-000(2)



- ⑭ LOCATE TOP OF REFRIGERATOR RECP 350 ABOVE SHELF.
- ⑬ ADD GROMMET WHERE WIRES PASS THROUGH FLOOR RISER.
- ⑫ WIRE IN SIDEWALL.
- ⑪ WIRE IN ROOF.
- ⑩ 105 EXTERIOR ENTERTAINMENT CENTER W/COMPACT DISC.
- ⑨ 76C EXTERIOR ENTERTAINMENT CENTER W/CASSETTE.
- ⑧ 22T VACUUM CLEANER-CENTRAL
- ⑦ 79W REFR/FREEZER-FOUR DOOR W/ICEMAKER.
- ⑥ 15U REFR/FREEZER-LG.DBL.DOOR W/ICEMAKER.
- ⑤ WIRE ROUTED BELOW FLOOR. CLAMP TO FLOOR AS NECESSARY WITH CLAMP 10497-01-000 OR WIRE TIES 8343-02-000. TO BE LOCATED ABOVE STORAGE AREAS EVERY 500 MM.
- 4. SEE WIRING DIAGRAM-BODY FOR ADDITIONAL INFORMATION.
- 3. ALL GROUND WIRES ARE TO BE COVERED WITH TUBING 8041-02-000.
- 2. ALL WIRES ARE TO BE CLAMPED WITH CLAMP 10497-05-000 WITHIN 200 OF OUTLET BOXES AND SPLICES. USE SCREW G67-10-12B, OR 39-10-12B.
- 1. ALL WIRE TO BE CLAMPED WITH CLAMP 10495-01-000 OR CLIP 80734-02-000 EVERY 600. USE SCREW G67-10-12B UNLESS OTHERWISE SPECIFIED.

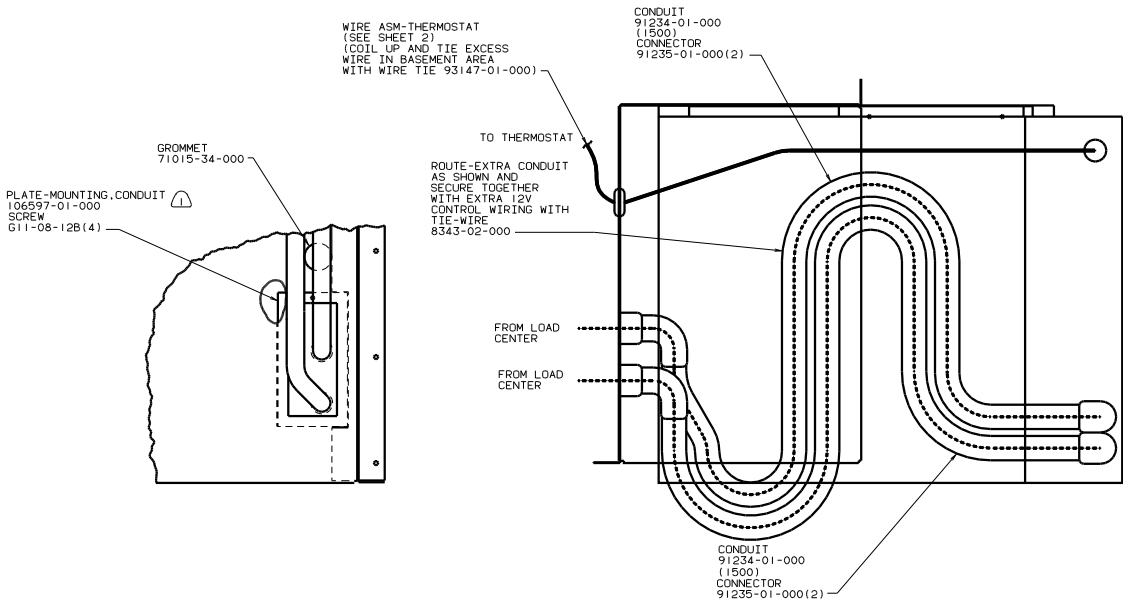
NOTES:

FOR ELECTRICAL TORQUE SPECIFICATIONS SEE DWG NO. 128783-01-000

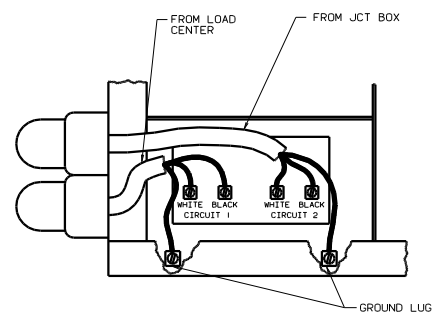
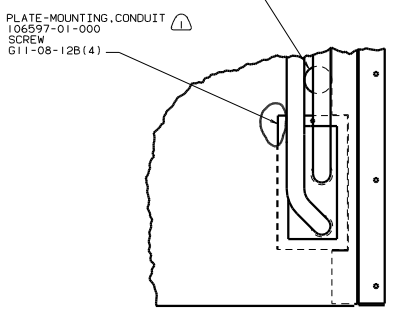
FOR ELECTRICAL CALLOUTS SEE DWG NO. 121339-01-000

99 M39Y
265 CANADIAN HOUSING AND MOTOR VEHICLE STANDARDS IE3 ENERGY MGMT SYS 78J ELECTRICAL SYSTEM-50 AMP

WIRING INSTL-BODY(110850CAN)
SHEET 7 OF 19
128554



VIEW HA-HA



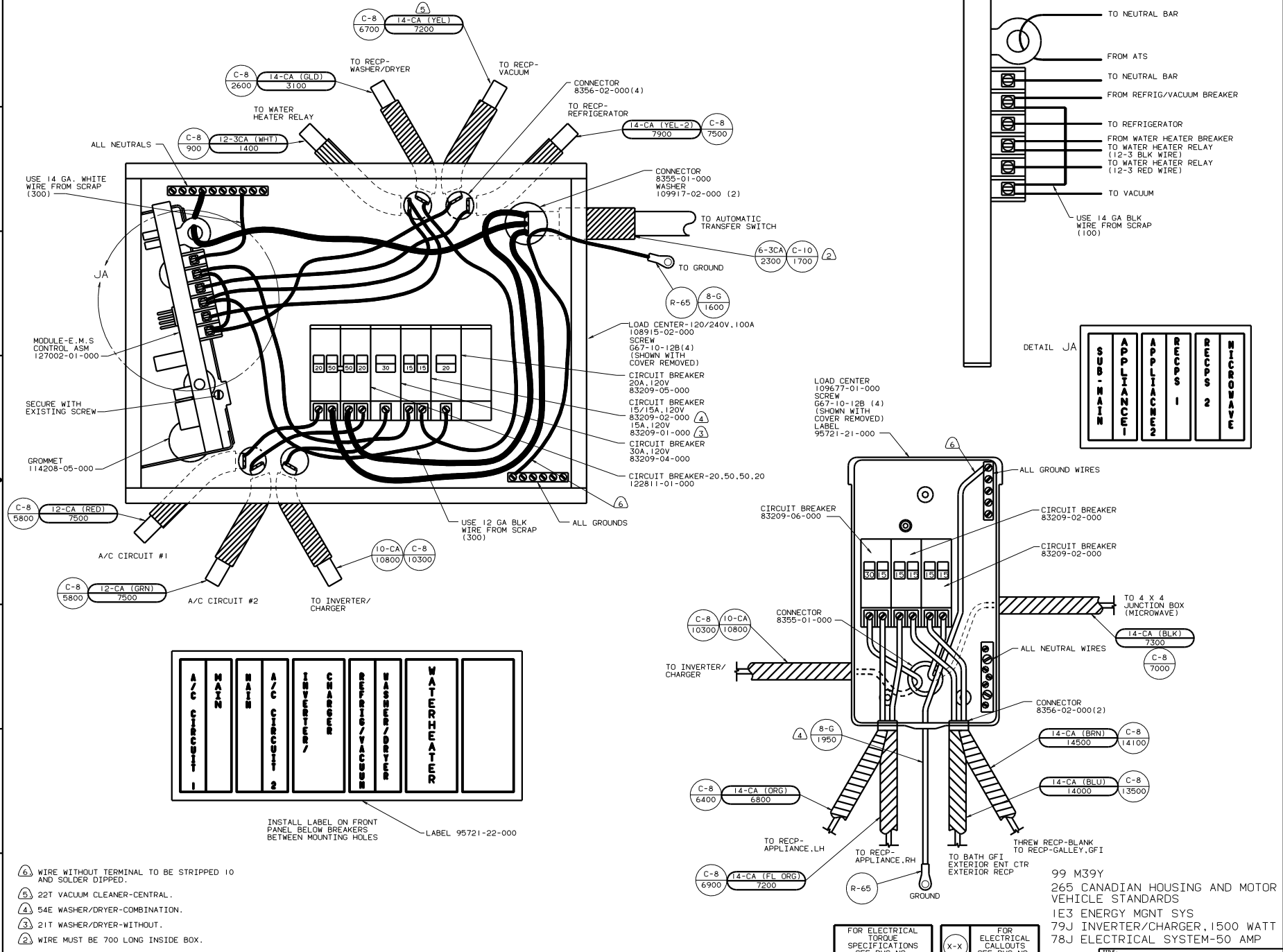
NOTES: SEAL EDGES WITH TACKY TAPE.

FOR ELECTRICAL TORQUE SPECIFICATIONS SEE DWG NO. 128783-01-000

FOR ELECTRICAL CALLOUTS SEE DWG NO. 121339-01-000

99 M39Y
1B1 USA STANDARDS
265 CANADIAN HOUSING AND
MOTOR VEHICLE STANDARDS

WIRING INSTL-BODY(CENTL A/C)
SHEET 8 OF 19



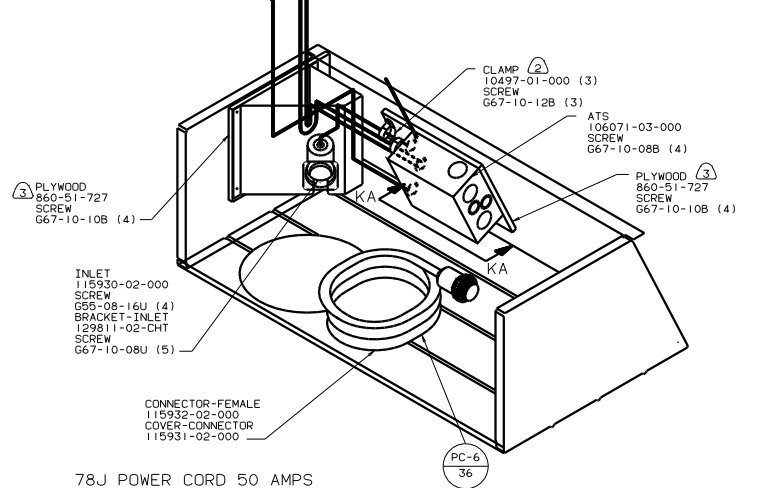
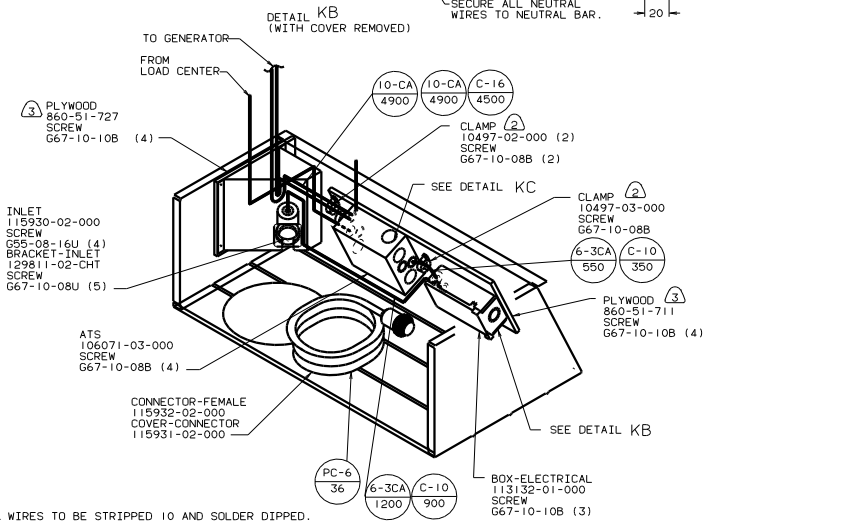
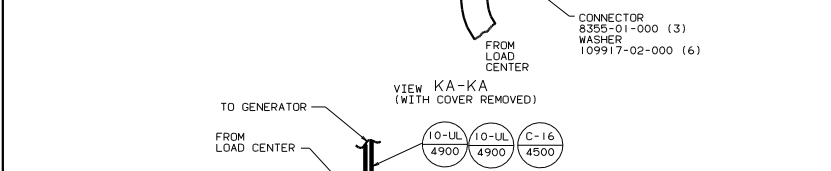
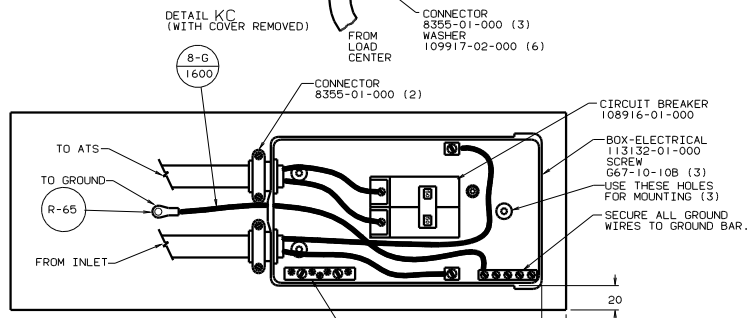
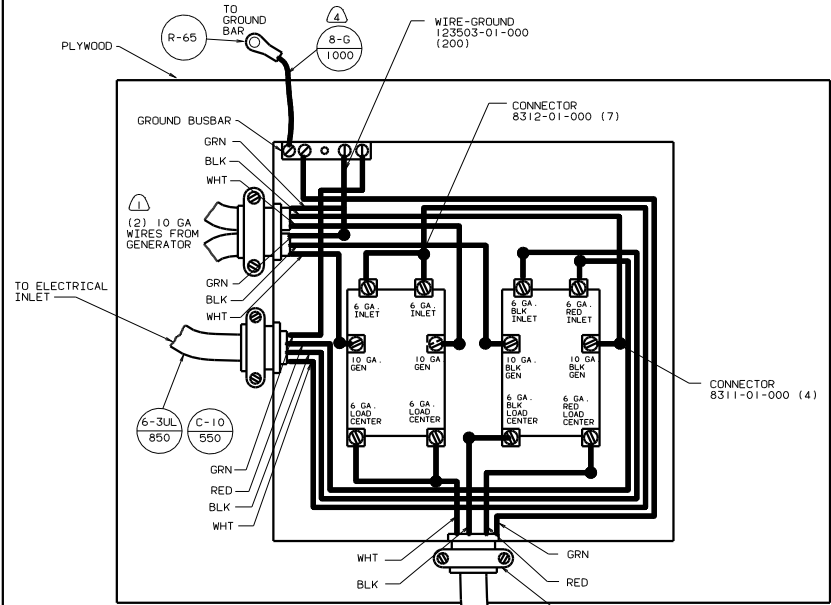
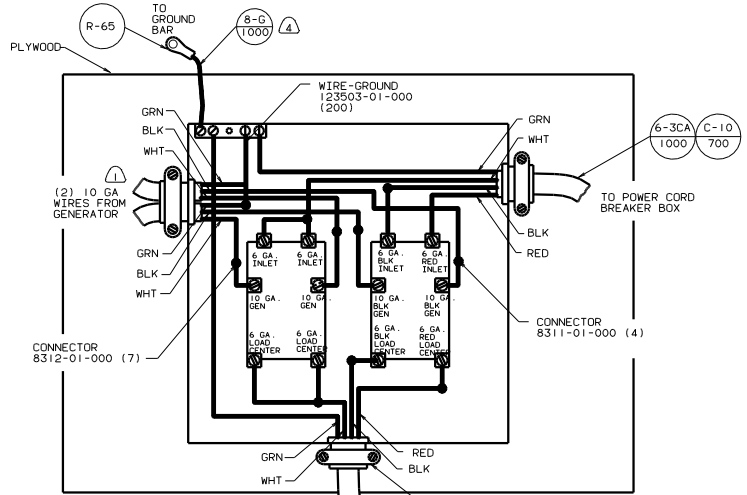
- ① ALL GROUND WIRES TO BE COVERED WITH TUBING 8041-02-000.
- ② WIRE MUST BE 700 LONG INSIDE BOX.
- ③ 21T WASHER/DRYER-WITHOUT.
- ④ 54E WASHER/DRYER-COMBINATION.
- ⑤ 22T VACUUM CLEANER-CENTRAL.
- ⑥ WIRE WITHOUT TERMINAL TO BE STRIPPED 10 AND SOLDER DIPPED.

FOR ELECTRICAL TORQUE SPECIFICATIONS SEE DWG NO. 128763-01-000

FOR ELECTRICAL CALLOUTS SEE DWG NO. 121339-01-000

99 M39Y
 265 CANADIAN HOUSING AND MOTOR VEHICLE STANDARDS
 1E3 ENERGY MGMT SYS
 79J INVERTER/CHARGER, 1500 WATT
 78J ELECTRICAL SYSTEM-50 AMP

DATE	12/19/05	BY	J.E.
DESCRIPTION	WIRING INSTL-BODY(CC IC CAN)		
SHEET	9	OF	19



- ④ WIRES TO BE STRIPPED 10 AND SOLDER DIPPED.
- ③ PAINT EXPOSED SURFACES BLACK WITH 106112-01-000.
- ② ALL WIRES TO BE CLAMPED WITH IN 200 OF BOX.
- ① 39M GENERATOR-7,000 WATT, ONAN MARQUIS, GAS.

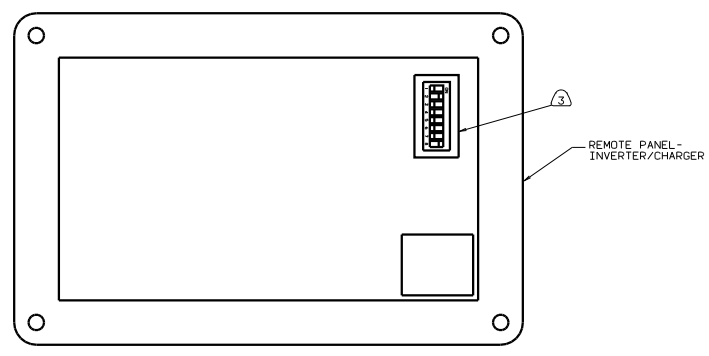
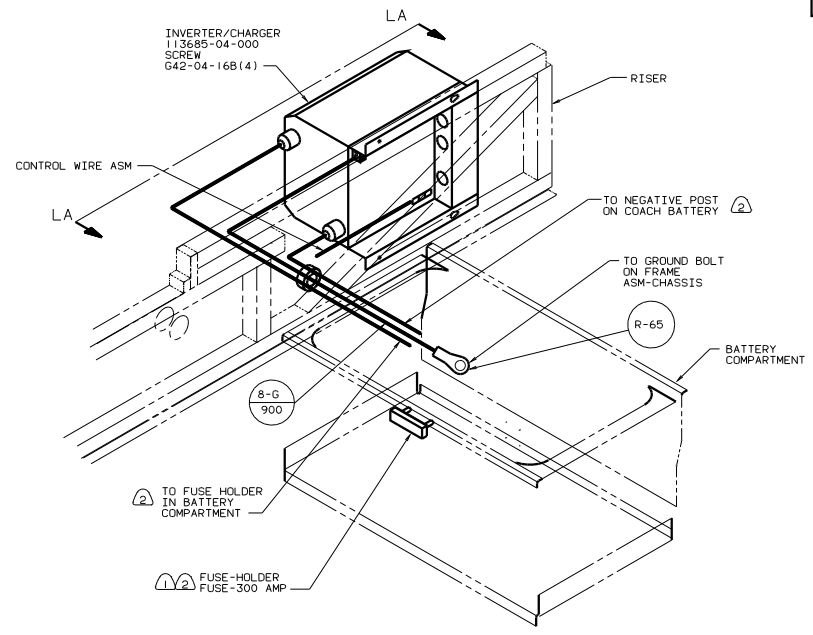
78J POWER CORD-50 AMPS
265 CANADIAN HOUSING AND
MOTOR VEHICLE STANDARDS

78J POWER CORD 50 AMPS
IBI USA STANDARDS

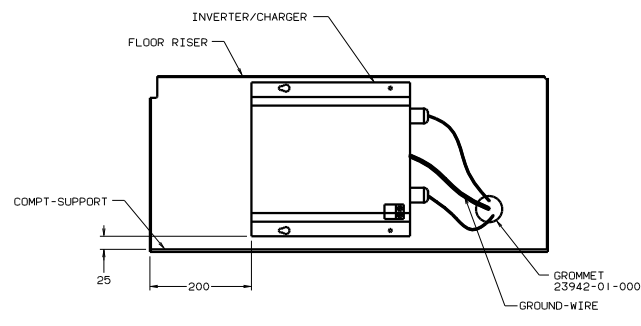
FOR ELECTRICAL SPECIFICATIONS SEE DWG NO. 128783-01-000	X-X	FOR ELECTRICAL CALLOUTS SEE DWG NO. 121339-01-000
--	-----	--

99 M39Y
78J POWER CORD-50 AMPS
39M GENERATOR 7,000 WATT
ONAN MARQUIS GAS

TITLE	WIRING INSTL-BODY(ATS)
NO. OF SHEETS	2
SHEET NO. OF 19	1
DWG NO.	128554



VIEW MK-MK



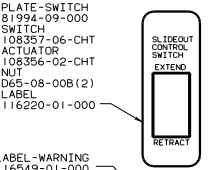
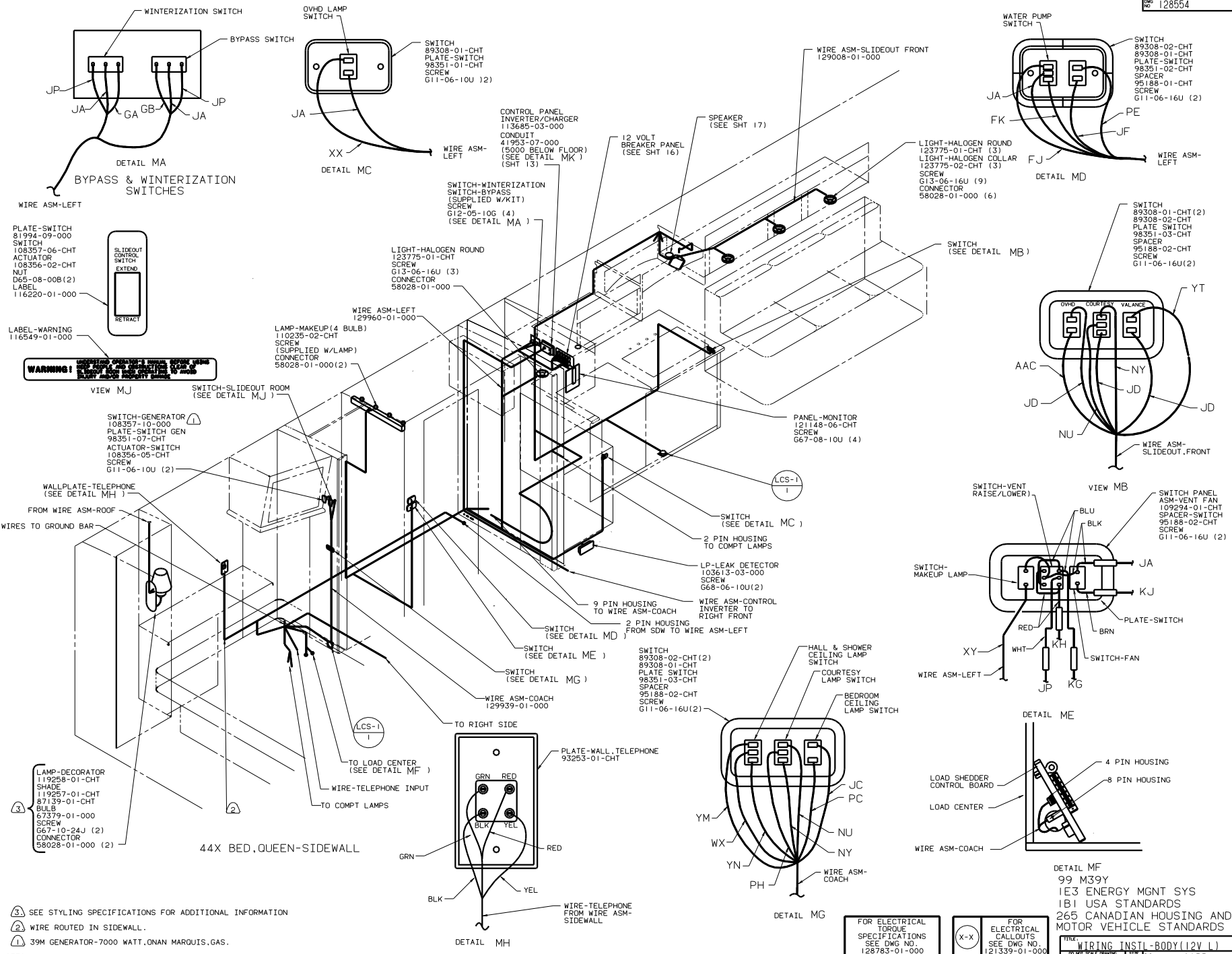
VIEW LA-LA

- NOTES:
- (3) DIP SWITCHES MUST BE SET AS FOLLOWS
1 OFF, 2 ON, 3 OFF, 4 OFF, 5 OFF, 6 OFF, 7 OFF, 8 ON.
 - (2) SEE WIRING INSTL-CHASSIS FOR ADDITIONAL INFORMATION.
 - (1) MOUNTED TO BACK OF BATTERY COMPARTMENT.

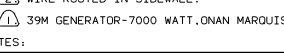
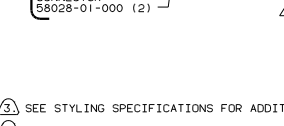
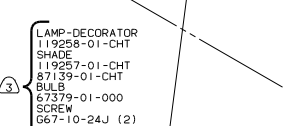
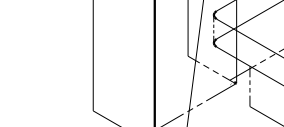
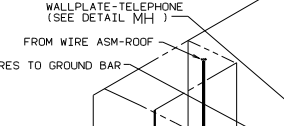
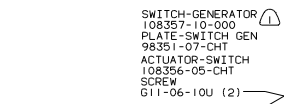
(X-X)	FOR ELECTRICAL CALLOUTS SEE DWG NO. 121339-01-000	FOR ELECTRICAL TORQUE SPECIFICATIONS SEE DWG NO. 128783-01-000
	DO NOT SCALE DRAWING SHEET 11 of 19	

99 M39Y
IBI USA STANDARDS
265 CANADIAN HOUSING AND
MOTOR VEHICLE STANDARDS
79J INVERTER/CHARGER 1500 WATT

TITLE WIRING INSTL-BODY(IC)	
DWG NO 128554	REV 1.0



WARNING! CAUTION: OVERHEATING, FIRE, OR SHOCK HAZARD. DO NOT TOUCH ELECTRICAL WIRING OR COMPONENTS WHILE THE UNIT IS ON. ALWAYS DISCONNECT MAIN POWER BEFORE WORKING ON ELECTRICAL SYSTEMS.



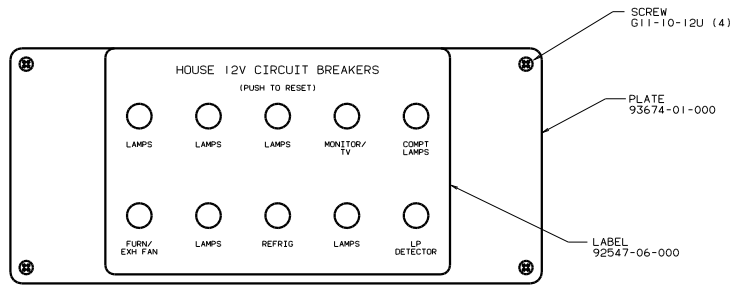
- ③ SEE STYLING SPECIFICATIONS FOR ADDITIONAL INFORMATION
- ② WIRE ROUTED IN SIDEWALL.
- ① 39M GENERATOR-7000 WATT, ONAN MARQUIS, GAS.

FOR ELECTRICAL TORQUE SPECIFICATIONS SEE DWG NO. 128783-01-000

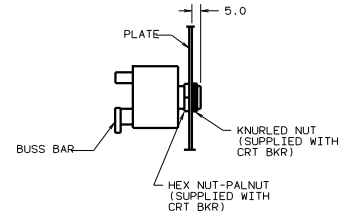
FOR ELECTRICAL CALLOUTS SEE DWG NO. 121339-01-000

99 M39Y
IE3 ENERGY MGMT SYS
1B1 USA STANDARDS
265 CANADIAN HOUSING AND MOTOR VEHICLE STANDARDS

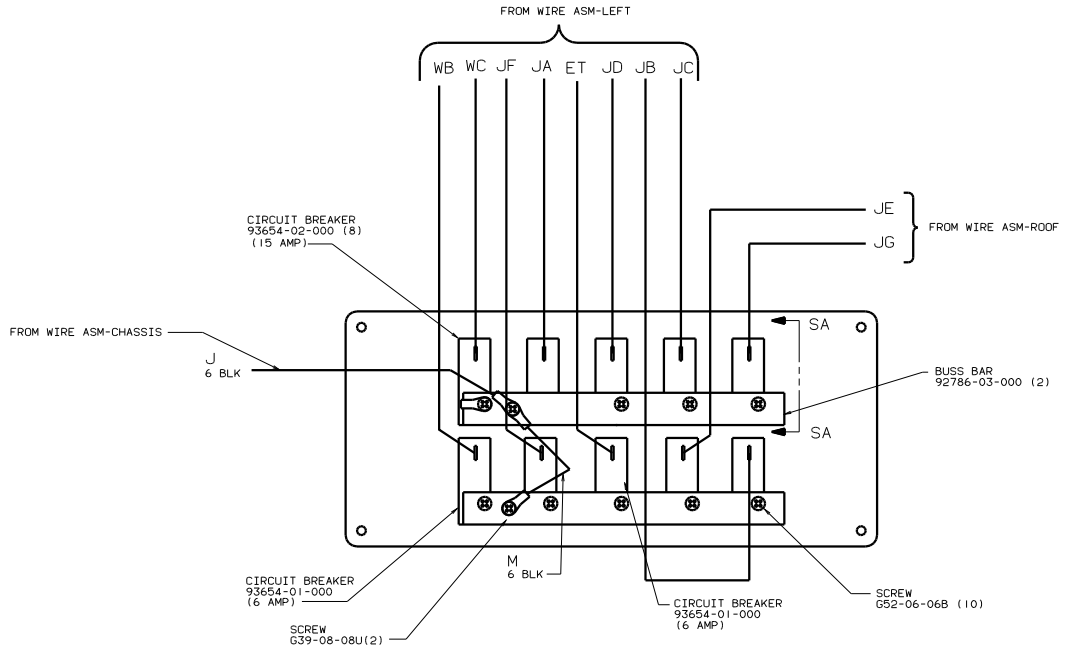
TITLE: WIRING INSTL-BODY(12V L)
DWG NO. 128554
SHEET 12 OF 19



CIRCUIT BREAKER (FRONT VIEW)



SECTION SA-SA

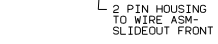
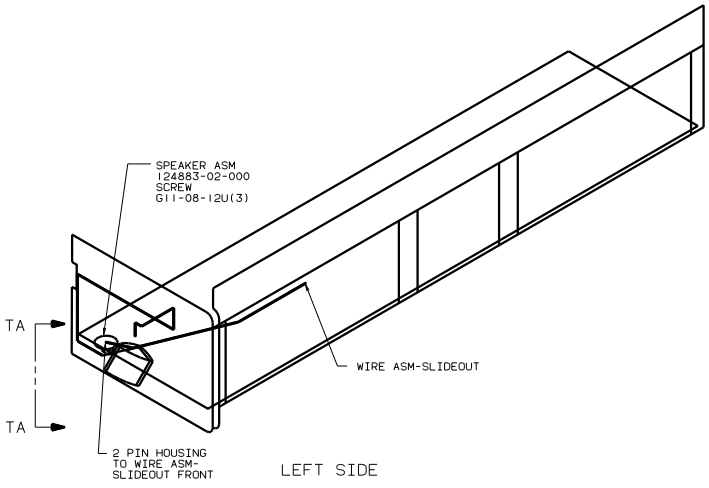
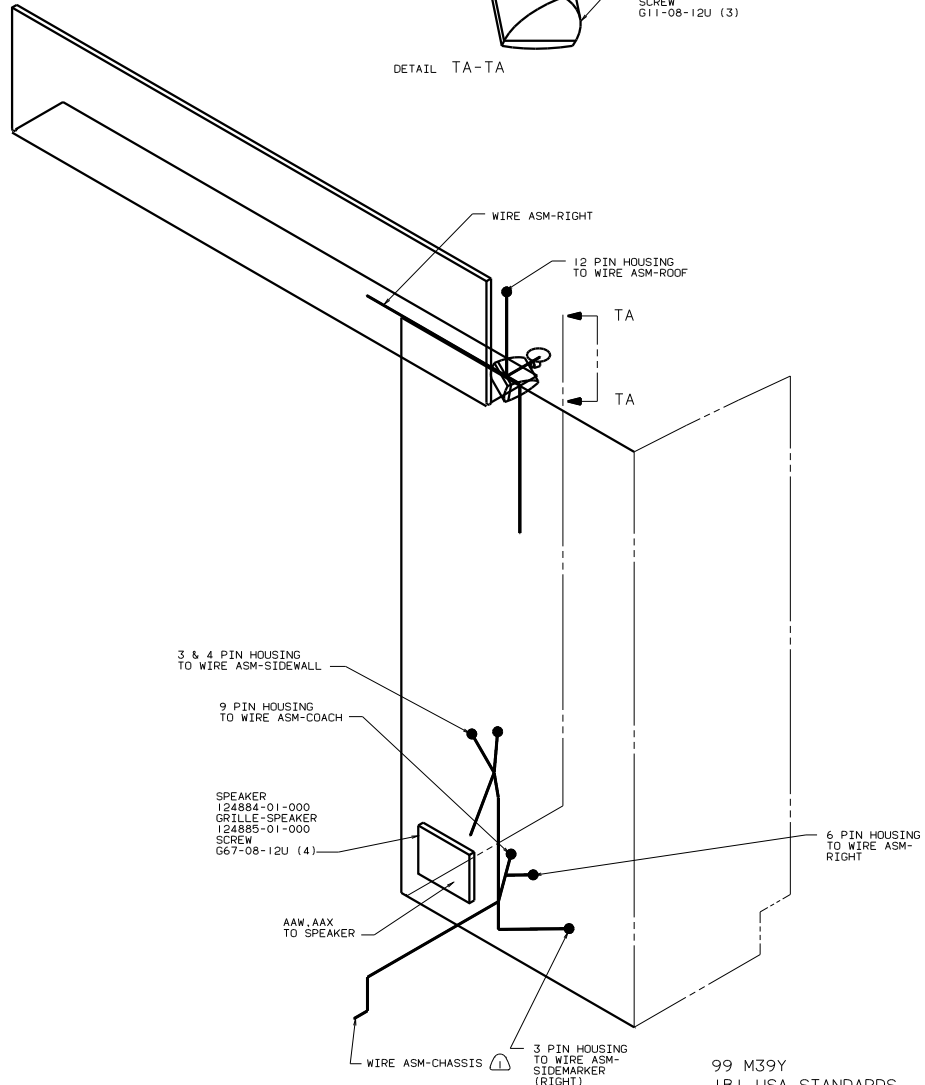
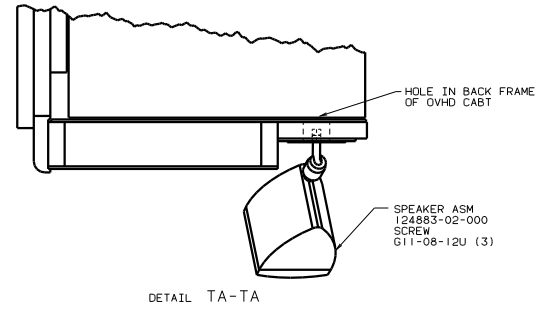


CIRCUIT BREAKER (BACK VIEW)

FOR ELECTRICAL TORQUE SPECIFICATIONS SEE DWG NO. 128783-01-000

99 M39Y
 181 USA STANDARDS
 265 CANADIAN HOUSING AND MOTOR VEHICLE STANDARDS

TITLE		WIRING INSTL-BODY(12 BP)	
NO	REV	DATE	BY
1	1		
SHEET 14 OF 19		128554	



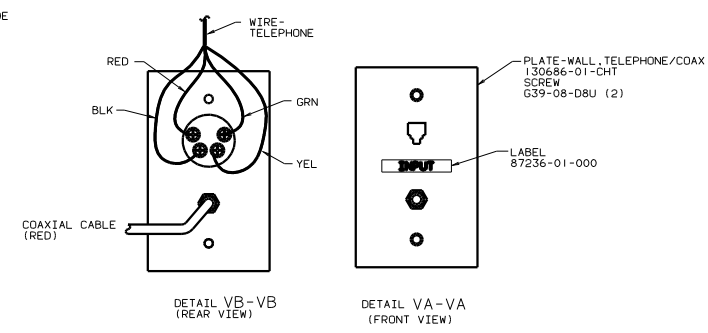
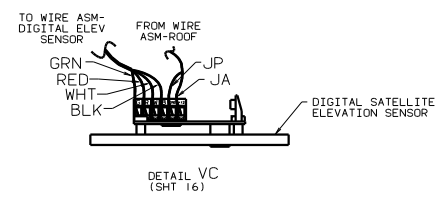
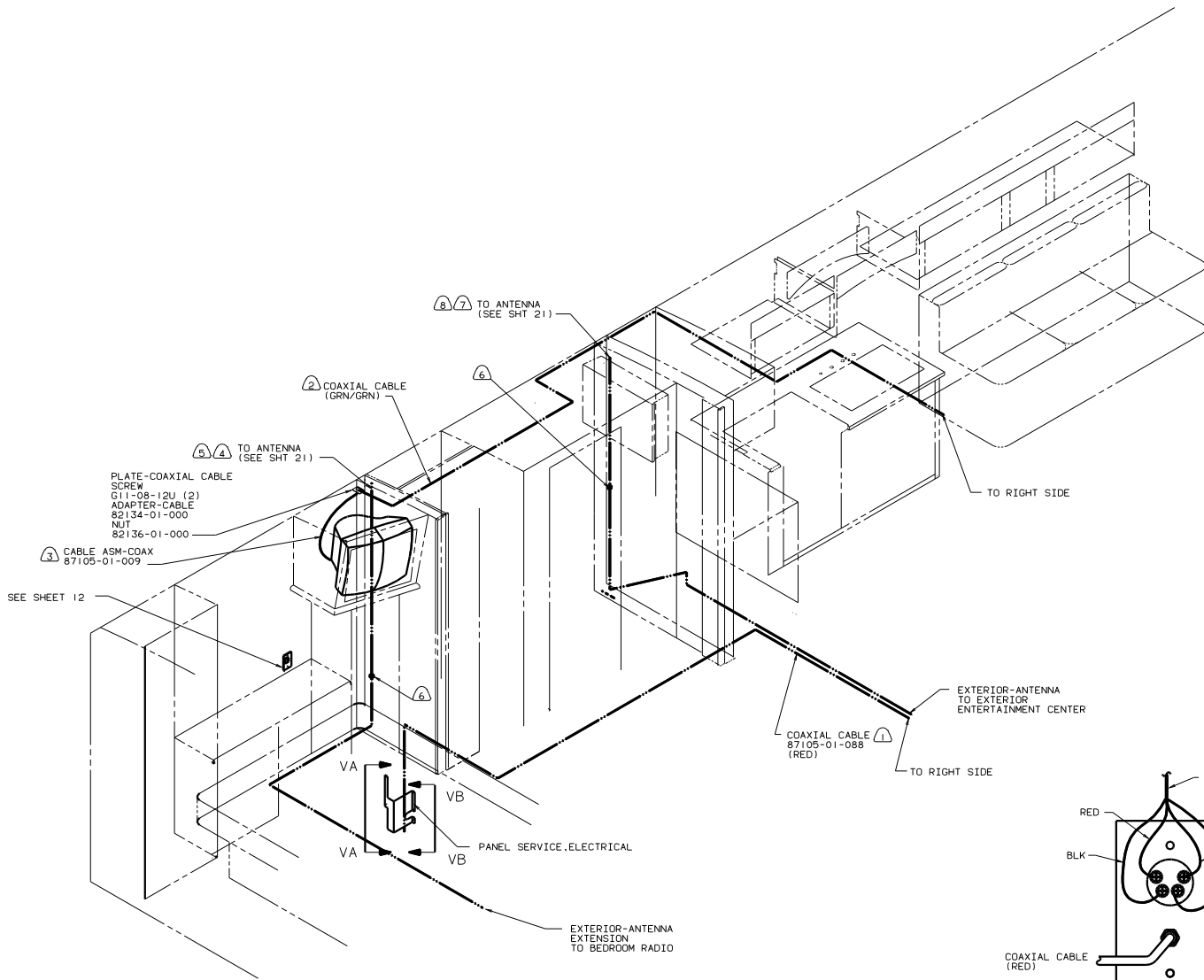
FOR ELECTRICAL TORQUE SPECIFICATIONS SEE DWG NO. 128783-01-000

99 M39Y
1B1 USA STANDARDS
265 CANADIAN HOUSING AND MOTOR VEHICLE STANDARDS

TITLE		DWG NO.	
WIRING INSTL - BODY (DLX SND)		128554	
DATE	BY	CHK	APP
15	15	15	15
SHEET 15 OF 19		1E	

SEE WIRING INSTL-CHASSIS FOR ADDITIONAL INFORMATION.
1. SEE WIRING INSTL-FRONT END FOR ADDITIONAL INFORMATION.

NOTES:



- ⑧ 105 EXTERIOR ENTERTAINMENT CTR W/COMPACT DISK.
- ⑦ 76C EXTERIOR ENTERTAINMENT CTR W/CASSETTE.
- ⑥ WRAP SPLICE WITH TAPE.
- ⑤ 25E REAR STEREO SYSTEM WITH CD SLAVE.
- ④ 26L REAR STEREO SYSTEM.
- ③ 10W TV (REAR) AC 19" COLOR W/REMOTE.
- ② WIRE ROUTED IN ROOF.
- ① WIRE ROUTED BELOW FLOOR.

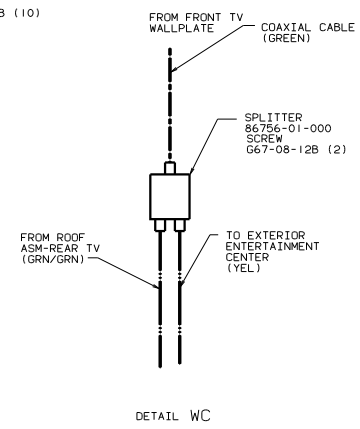
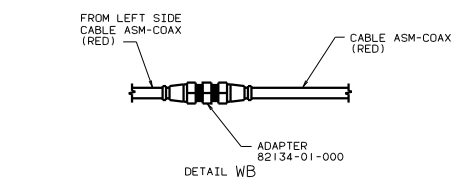
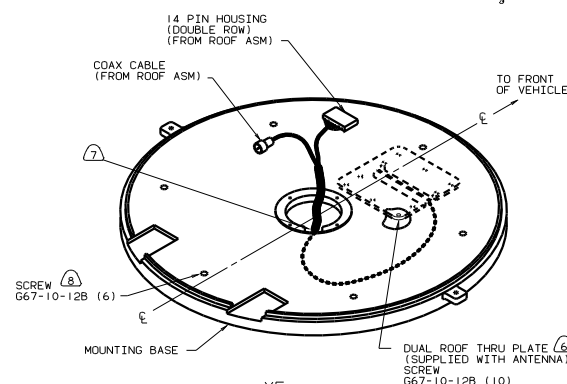
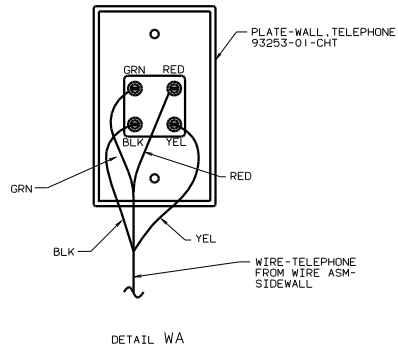
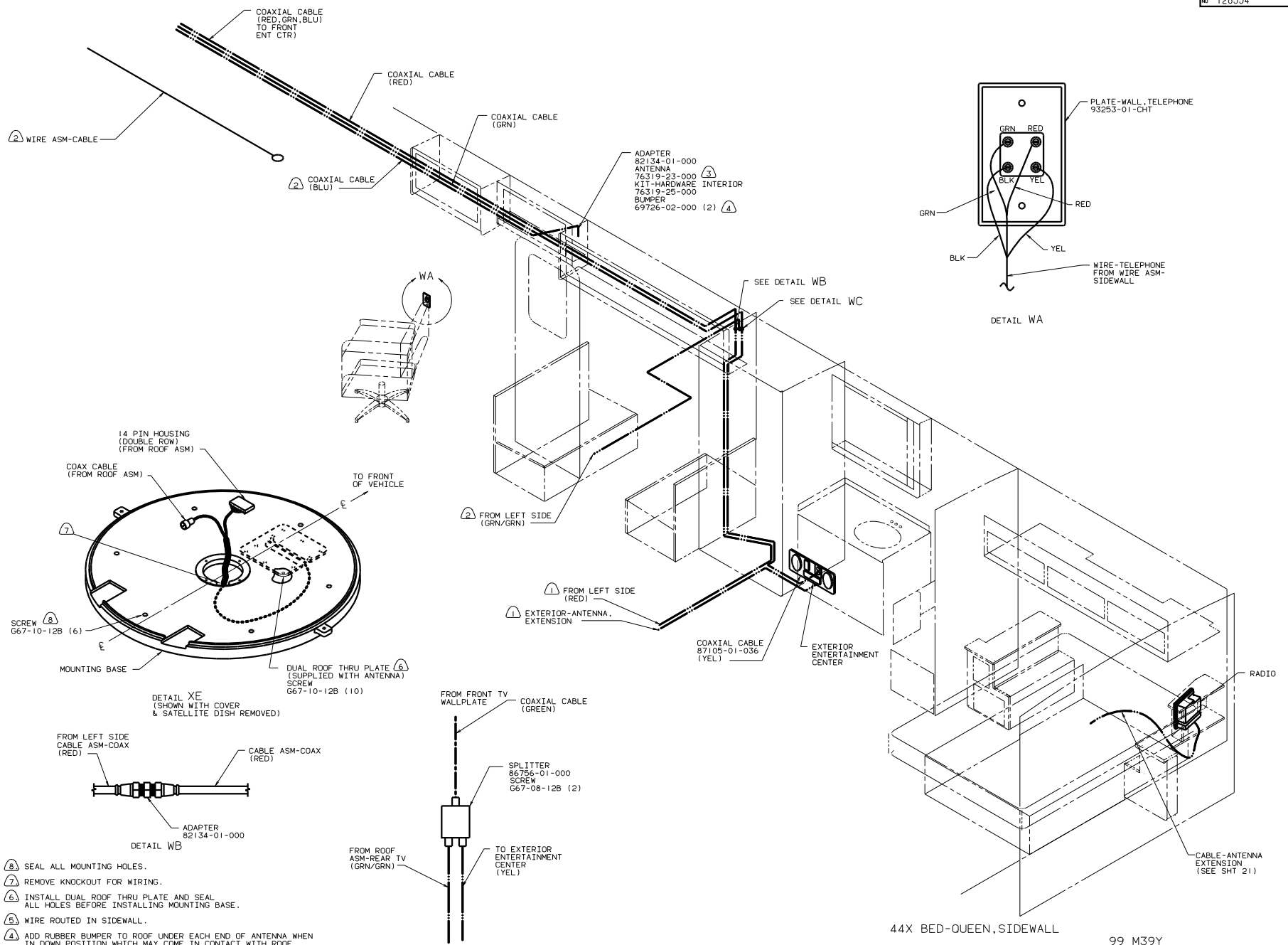
FOR ELECTRICAL TORQUE SPECIFICATIONS SEE DWG NO. 128783-01-000

FOR ELECTRICAL CALLOUTS SEE DWG NO. 121339-01-000

99 M39Y
1B1 USA STANDARDS
265 CANADIAN HOUSING AND MOTOR VEHICLE STANDARDS

WIRING INSTL-BODY(COAX L)

128554



- NOTES:
- ⑧ SEAL ALL MOUNTING HOLES.
 - ⑦ REMOVE KNOCKOUT FOR WIRING.
 - ⑥ INSTALL DUAL ROOF THRU PLATE AND SEAL ALL HOLES BEFORE INSTALLING MOUNTING BASE.
 - ⑤ WIRE ROUTED IN SIDEWALL.
 - ④ ADD RUBBER BUMPER TO ROOF UNDER EACH END OF ANTENNA WHEN IN DOWN POSITION WHICH MAY COME IN CONTACT WITH ROOF.
 - ③ SEE TV INSTALLATION FOR ADDITIONAL INFORMATION.
 - ② WIRE ROUTED IN ROOF.
 - ① WIRE ROUTED BELOW FLOOR.

44X BED-QUEEN, SIDEWALL

99 M39Y
 1B1 USA STANDARDS
 265 CANADIAN HOUSING AND
 MOTRO VEHICLE STANDARDS

FOR ELECTRICAL TORQUE SPECIFICATIONS SEE DWG NO. 128783-01-000

WIRING INSTL-BODY(COAX R)
 SHEET 18 OF 19
 128554

