



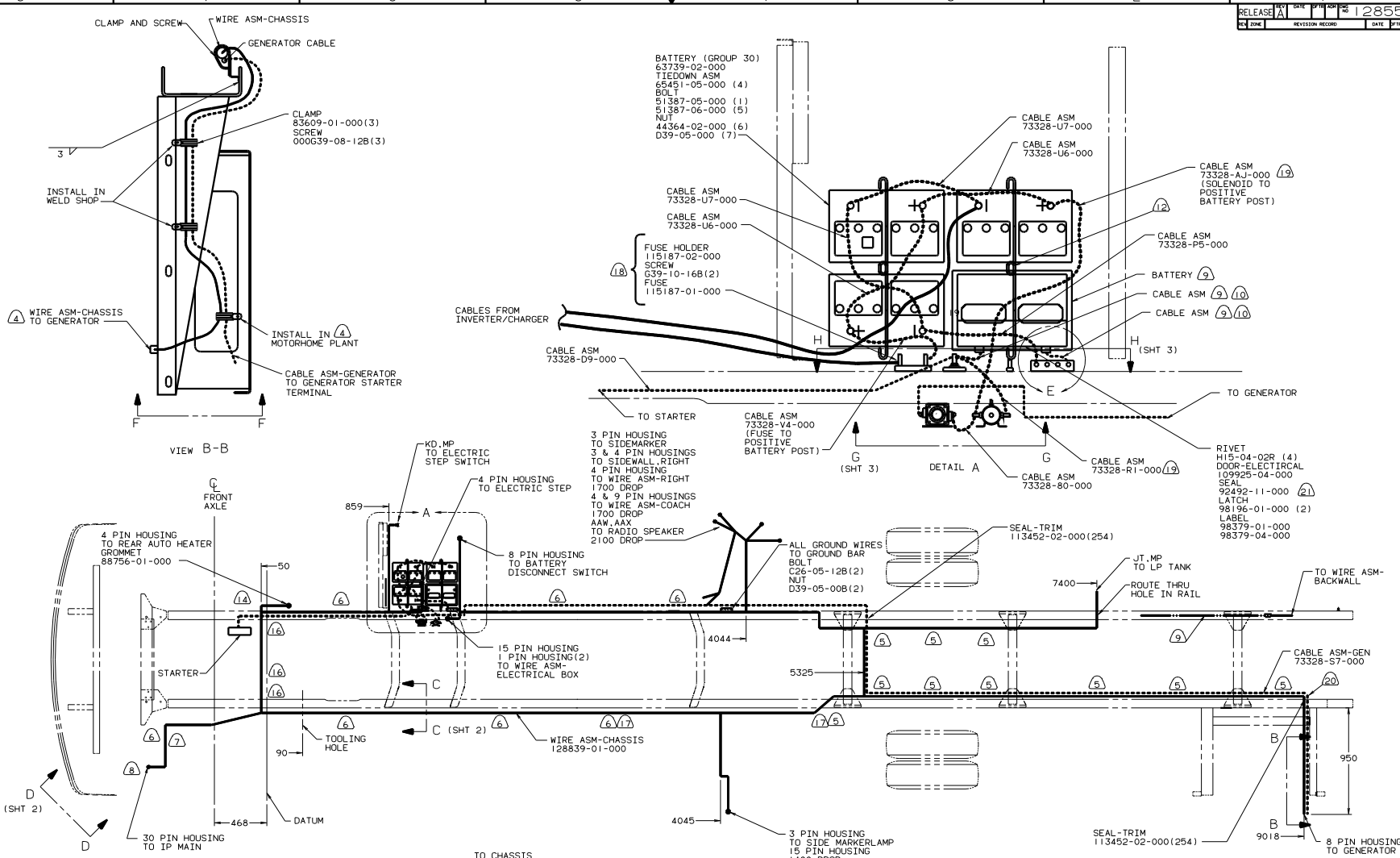
DANGER

Danger of electrical shock, burns or death. Always remove all power sources before attempting any repair, service or diagnostic work. Power can be present from shore power, generator, inverter or battery. All power sources must be disabled and secured before performing any service.



CAUTION

If you lack the skills, tools or equipment to perform diagnostic or repair work leave such work to an authorized Winnebago Industries dealer or other qualified shop.



1A BATTERY CABLES MUST BE INSTALLED TO STARTER MOTOR BEFORE ENGINE WIRING HARNESS AND ROUTED IN SUCH A MANNER AS TO PREVENT ANY POSSIBLE DEGRADATION FROM THE EXHAUST SYSTEM.

1B PLACE AROUND ENTIRE PERIMETER OF DOOR WITH SEAM AT TOP.

1C USE TWO NUTS HERE TO ACCOUNT FOR BATTERY HEIGHT DIFFERENCE.

1D TRIM CABLE TO 400MM, ADD TERMINAL 8348-01-000.

1E TRIM CABLE TO 600MM, ADD TERMINAL 8348-01-000.

1F SUPPLIED WITH CHASSIS.

1G SEE WIRING INSTL-FRONT END FOR WIRING CONNECTIONS.

1H COVER WITH CONDUIT-41953-10-000 & 41953-11-000 AS REQUIRED.

1I CLAMP 83610-01-000, SCREW G39-08-12B.

1J WIRE TIE 8343-02-000. FASTEN AT LEAST ONCE EVERY 600MM.

1K SECURE SO WIRES DO NOT CONTACT EXHAUST.

3. USE WIRE TIES 8343-02-000 AND CLAMP APPROXIMATELY 600MM ON CENTER UNLESS OTHERWISE SPECIFIED.

2. SECURE CONDUIT 41953-01-000, 41953-02-000 AND 41953-03-000 OVER ALL WIRES IN CONTACT WITH SHARP EDGES.

1. LEGEND: **—** WINNEBAGO WIRING, **- - - -** CABLE, **- - - -** GM WIRING.

2I PLACE AROUND ENTIRE PERIMETER OF DOOR W/SEAM AT TOP.

2J WIRE ASM AND CABLE ASM TO BE ROUTED BELOW CHASSIS RAIL IN THIS AREA.

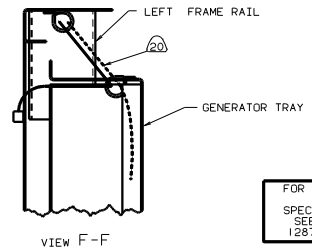
19 ROUTE CABLE OUT REAR SIDE OF STEP BOX THEN UP TO SOLENOID AND RELAY.

18 LOCATED INSIDE BATTERY COMPARTMENT.

17 WITH SLIDEOUT ROOM USE CLAMP 83610-03-000 & SCREW G39-08-12B

16 WIRE TIE 116673-01-000.

15 ROUTE CABLES OVER CHASSIS RAIL IN THIS AREA. FOLLOW ORIGINAL CABLE PATHS INSIDE RAIL.

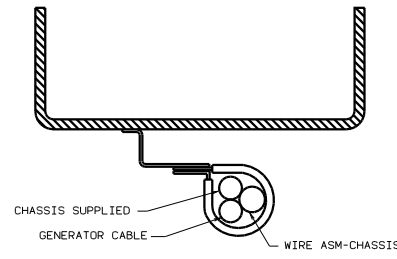


100 CHEVORLET
 181 USA STANDARDS
 265 CANADIAN HOUSING AND
 MOTOR VEHICLE STANDARDS

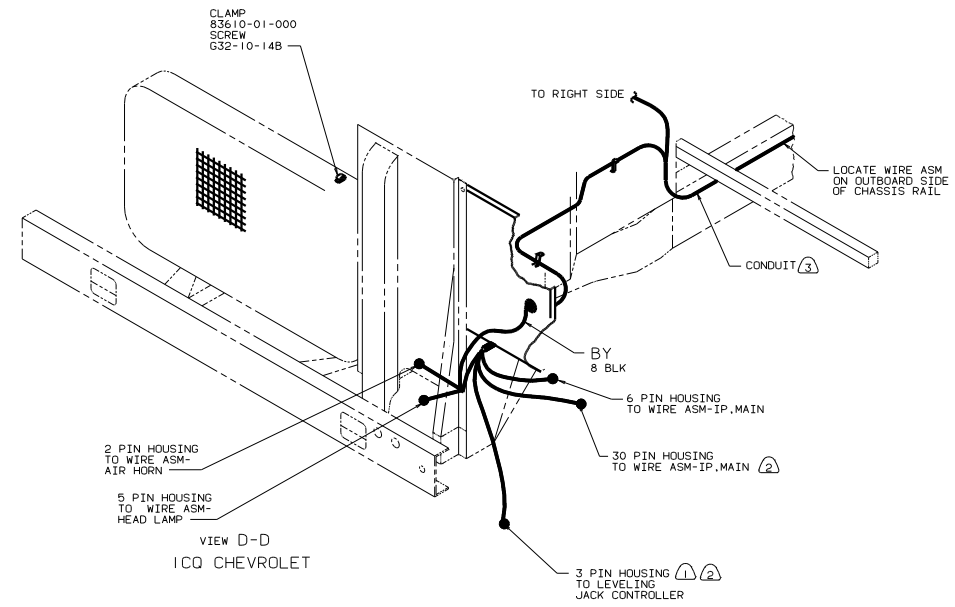
FOR ELECTRICAL TORQUE SPECIFICATIONS SEE DWG NO. 128783-01-000

WINNEBAGO 99 M37B			
OPIN	DATE	UNAPPROVED TOLERANCES ARE:	MATERIAL
OMP	DATE	ANGLE 0.15	1:1
DATE	DATE	ONE-PLACE 19.03	1:1
DATE	DATE	THREE-PLACE 19.03	1:1
DATE	DATE	THREE-PLACE 19.03	1:1
DATE	DATE	THREE-PLACE 19.03	1:1
DATE	DATE	THREE-PLACE 19.03	1:1
DATE	DATE	THREE-PLACE 19.03	1:1
DATE	DATE	THREE-PLACE 19.03	1:1
DATE	DATE	THREE-PLACE 19.03	1:1
DATE	DATE	THREE-PLACE 19.03	1:1

WIRING INSTL-CHASSIS
 12851



VIEW C-C



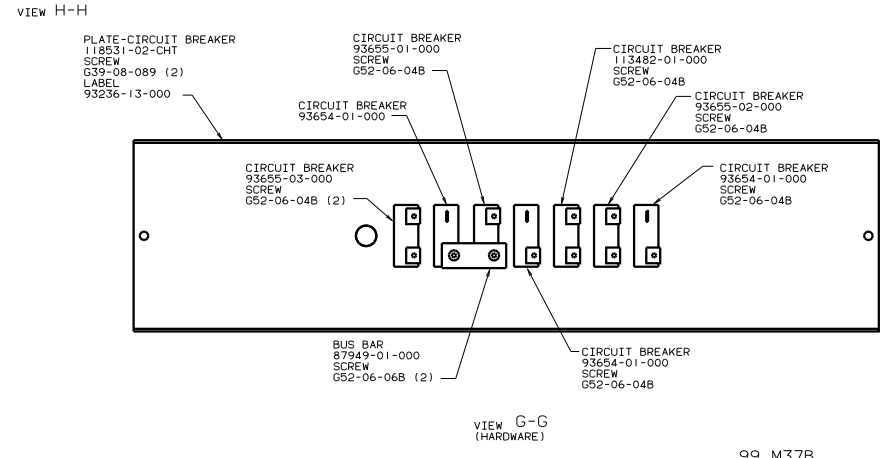
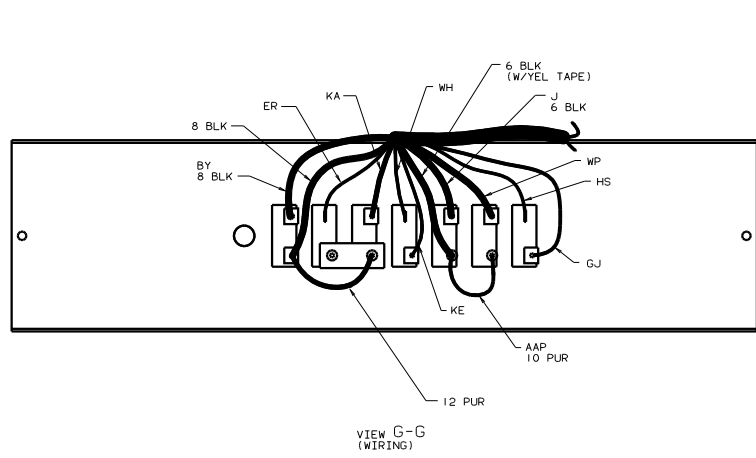
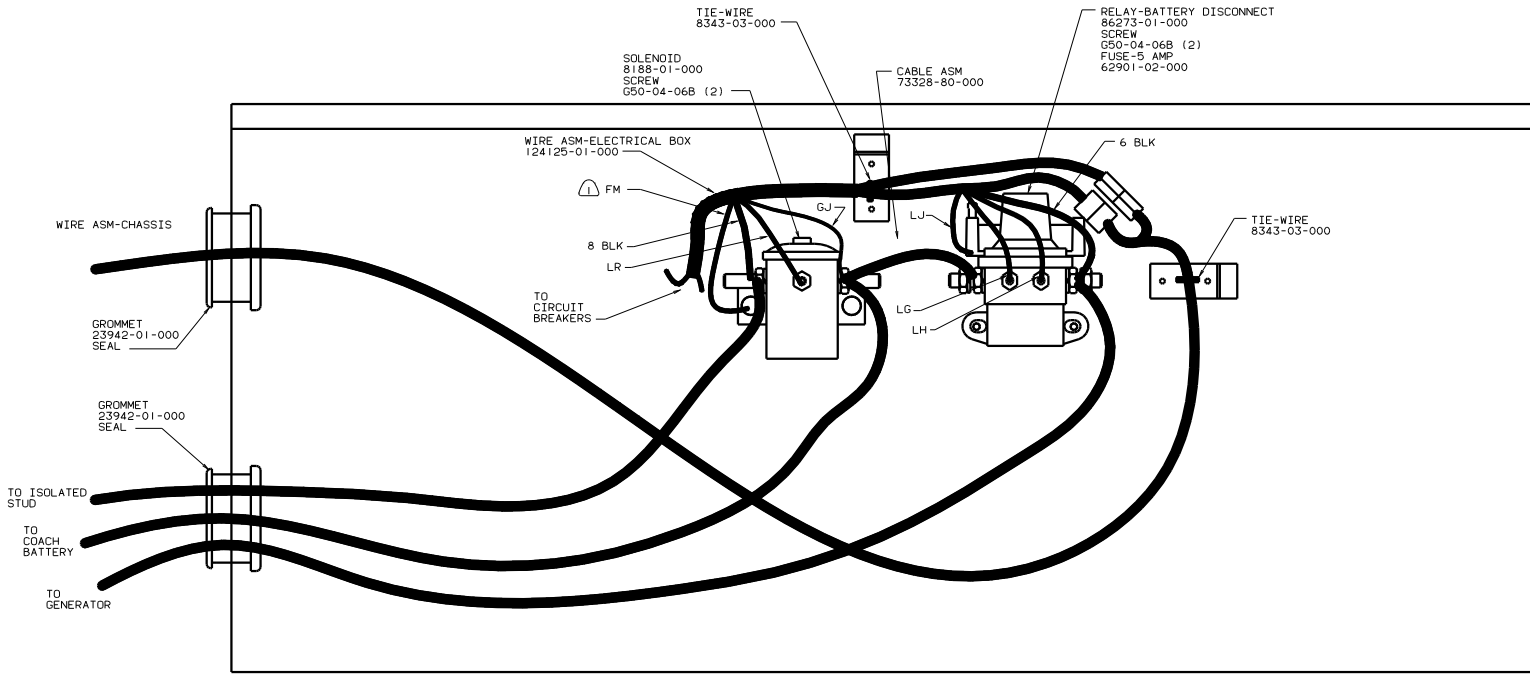
- (3) COVER WITH CONDUIT 41953-10-000 AND 41953-11-000 AS REQUIRED.
- (2) FOR ADDITIONAL INFORMATION SEE WIRING INSTALLATION FRONT END.
- (1) SEE HYDRAULIC LEVELING SYSTEM FOR ADDITIONAL INFORMATION.

NOTES:

FOR ELECTRICAL TORQUE SPECIFICATIONS SEE DWG NO. 128783-01-000

99 M37B
181 USA STANDARDS
265 CANADIAN HOUSING AND MOTOR VEHICLE STANDARDS

TITLE: WIRING INSTL-CHASSIS	
NO. OF SHEETS: 3	SHEET NO: 2
REV. NO: 1	DWG. NO: 128551



NOTES:
 SECURE WITH SOLENOID MOUNTING SCREW.

FOR ELECTRICAL
 TORQUE
 SPECIFICATIONS
 SEE DWG NO.
 128783-01-000

99 M37B
 IBI USA STANDARDS
 265 CANADIAN HOUSING AND
 MOTOR VEHICLE STANDARDS

TITLE		WIRING INSTL-CHASSIS	
NO. OF SCALE EDITS	REV	DATE	128551
SHEET 3 OF 3	1 E		