



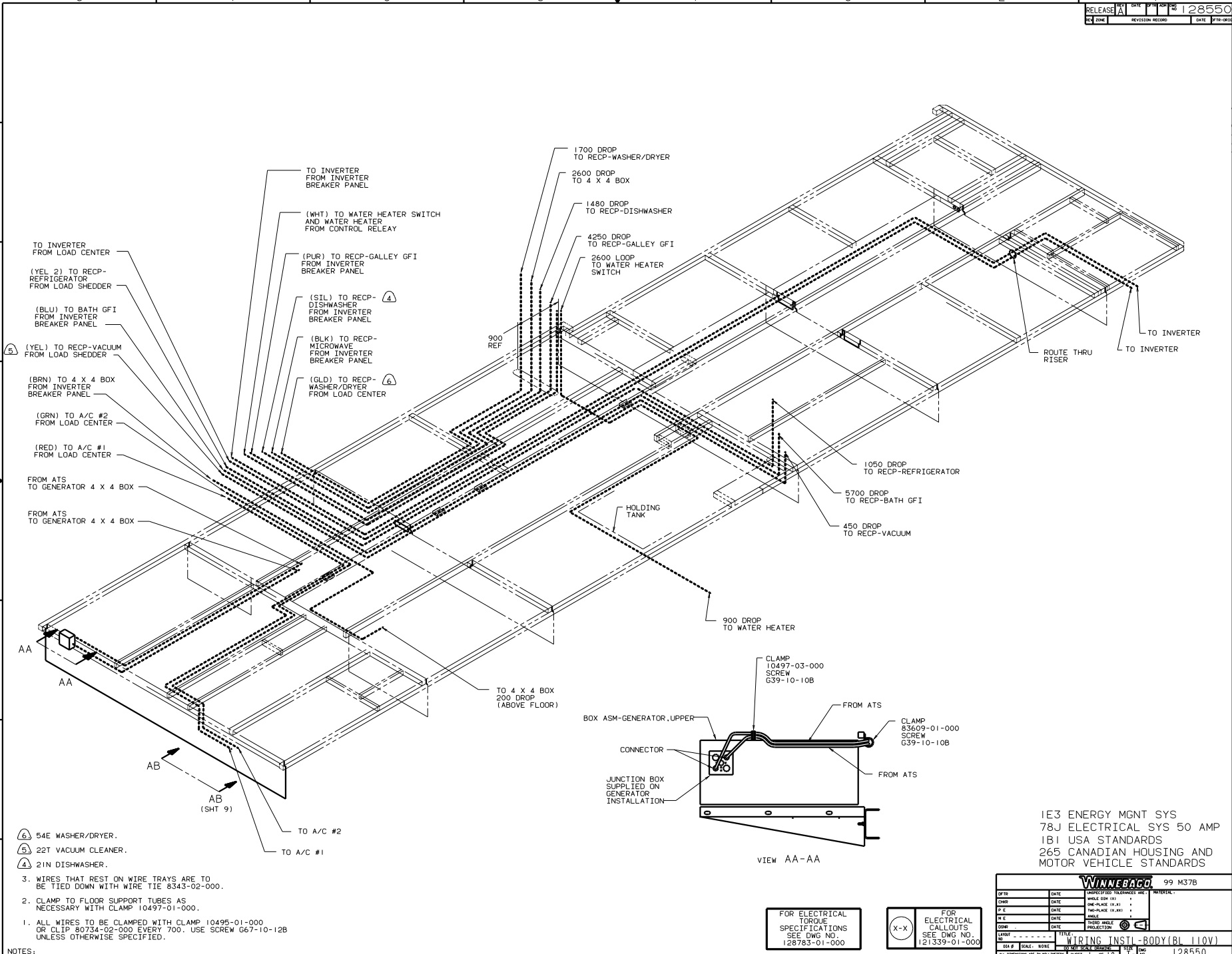
DANGER

Danger of electrical shock, burns or death. Always remove all power sources before attempting any repair, service or diagnostic work. Power can be present from shore power, generator, inverter or battery. All power sources must be disabled and secured before performing any service.



CAUTION

If you lack the skills, tools or equipment to perform diagnostic or repair work leave such work to an authorized Winnebago Industries dealer or other qualified shop.



- ⑥ 54E WASHER/DRYER.
- ⑤ 22T VACUUM CLEANER.
- ④ 21N DISHWASHER.
- 3. WIRES THAT REST ON WIRE TRAYS ARE TO BE TIED DOWN WITH WIRE TIE 8343-02-000.
- 2. CLAMP TO FLOOR SUPPORT TUBES AS NECESSARY WITH CLAMP 10497-01-000.
- 1. ALL WIRES TO BE CLAMPED WITH CLAMP 10495-01-000 OR CLIP 80734-02-000 EVERY 700. USE SCREW G67-10-12B UNLESS OTHERWISE SPECIFIED.

1E3 ENERGY MGMT SYS
 78J ELECTRICAL SYS 50 AMP
 1B1 USA STANDARDS
 265 CANADIAN HOUSING AND
 MOTOR VEHICLE STANDARDS

FOR ELECTRICAL
 TORQUE
 SPECIFICATIONS
 SEE DWG NO.
 128783-01-000

FOR ELECTRICAL
 CALLOUTS
 SEE DWG NO.
 121339-01-000

QTY	DATE	UNSPECIFIED TOLERANCES ARE:	MATERIAL
OMP	DATE	WHOLE DIM (1:1)	
F.P.E	DATE	ONE-PLACE (1:1)	
D.E	DATE	TWO-PLACE (1:1)	
COMP	DATE	THREE-PLACE (1:1)	
DATE	DATE	THREE-PLACE (1:1)	

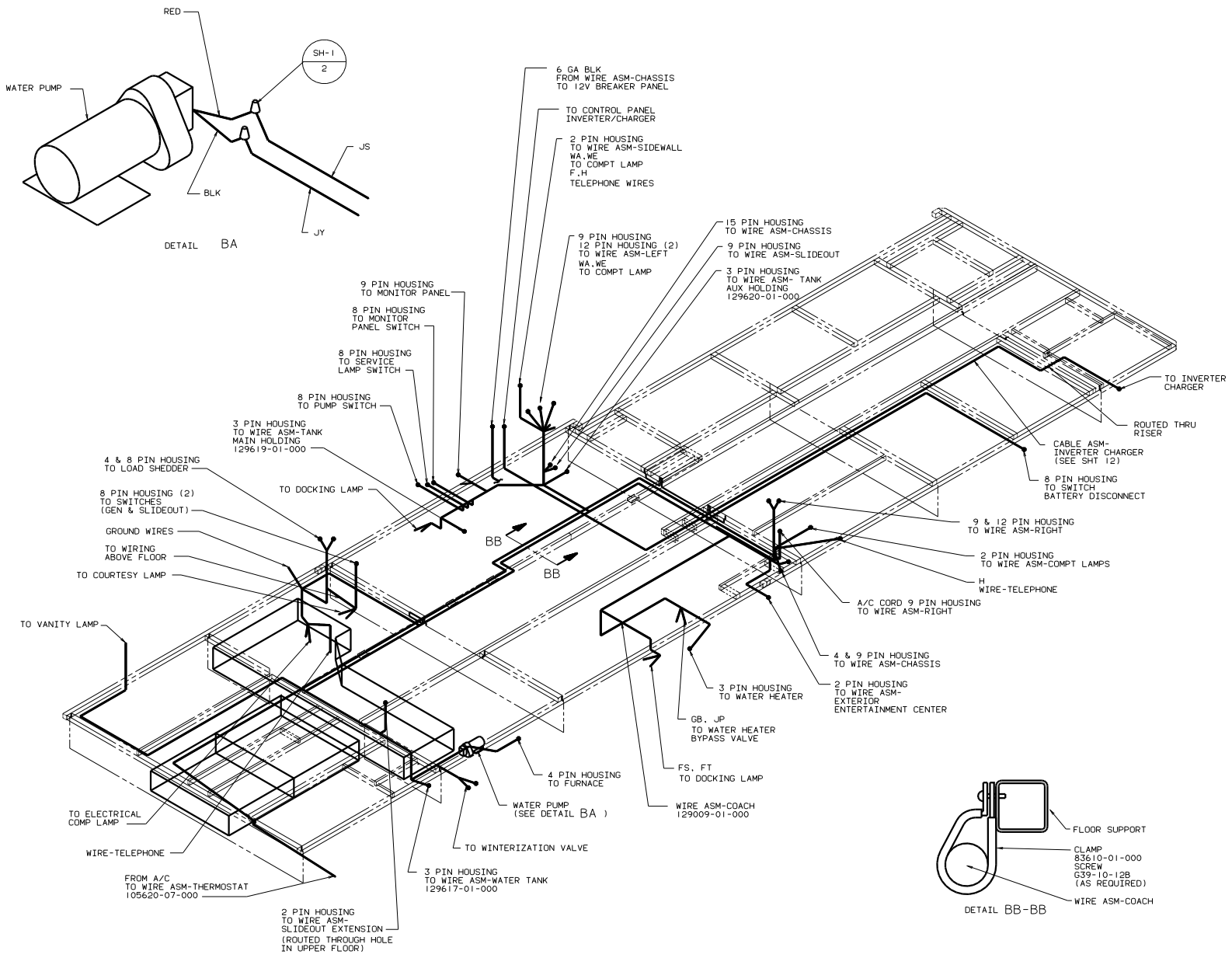
WINNEBAGO 99 M37B

1E3 ENERGY MGMT SYS
 78J ELECTRICAL SYS 50 AMP
 1B1 USA STANDARDS
 265 CANADIAN HOUSING AND
 MOTOR VEHICLE STANDARDS

WIRING INSTL-BODY(BL 110V)

DATE: 128550

SHEET 1 OF 19



3. WIRES THAT REST ON WIRE TRAYS ARE TO BE TIES DOWN WITH WIRE TIE 8343-02-000.
2. CLAMP TO FLOOR SUPPORT TUBES AS NECESSARY WITH CLAMP 10497-01-000.
1. ALL WIRES TO BE CLAMPED WITH CLAMP 10495-01-000 OR CLIP 80734-02-000 EVERY 700. USE SCREW G67-10-12B UNLESS OTHERWISE SPECIFIED.

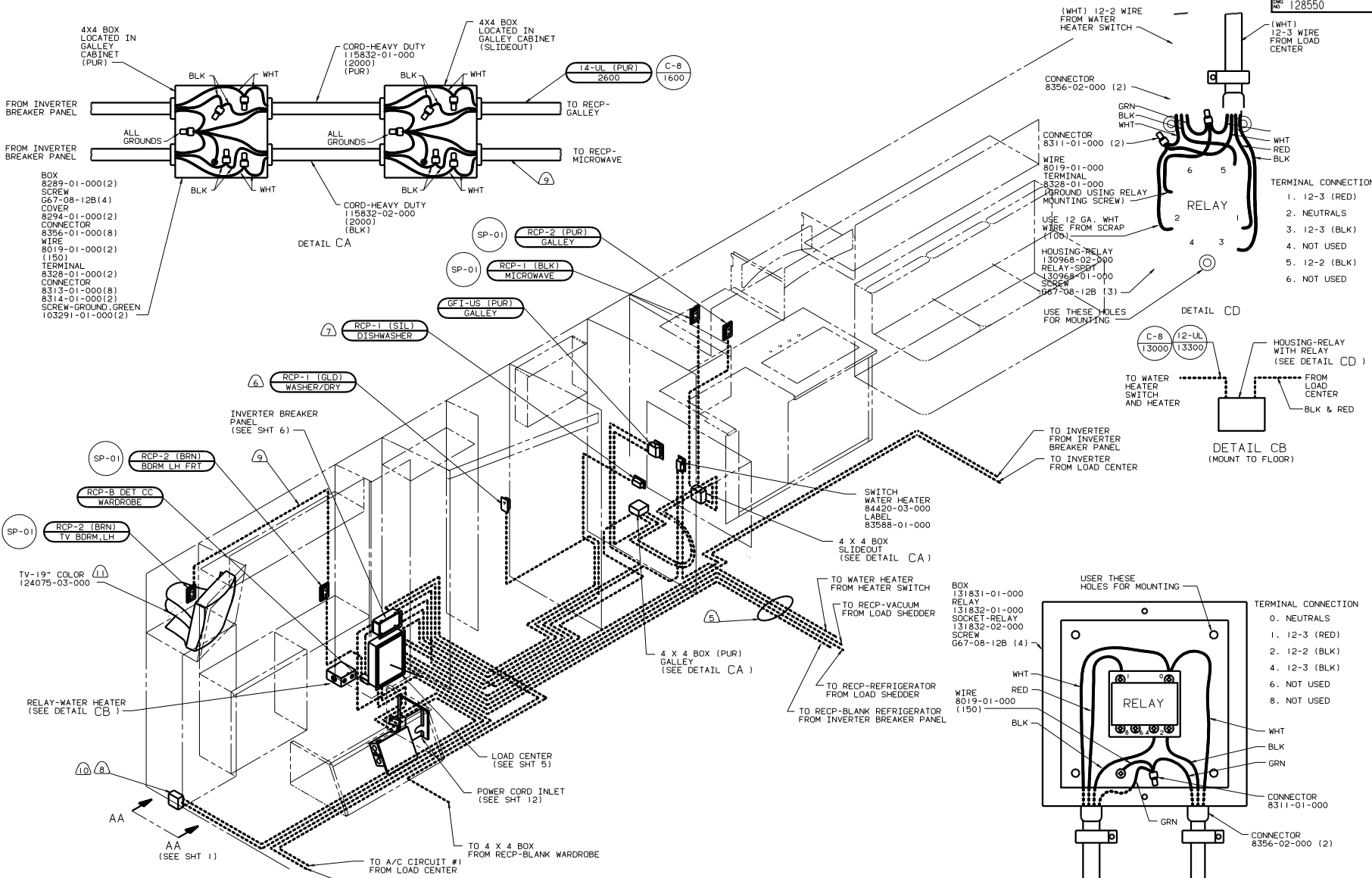
NOTES:

99 M37B
 1B1 USA STANDARDS
 265 CANADIAN HOUSING AND
 MOTOR VEHICLE STANDARDS

FOR ELECTRICAL
 TORQUE
 SPECIFICATIONS
 SEE DWG NO.
 128783-01-000

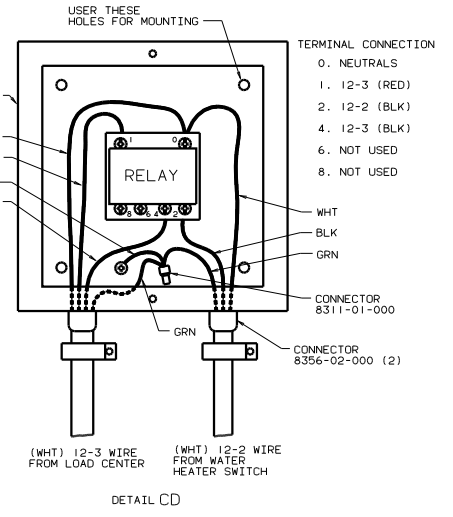
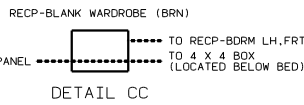
(X-X)
 FOR
 ELECTRICAL
 CALLOUTS
 SEE DWG NO.
 121339-01-000

WIRING INSTL-BODY(BL 12V)
 SHEET 2 OF 19
 128550



- 9) WIRE IN SIDEWALL.
- 8) 39M GENERATOR-7,000 WATT ONAN MARQUIS,GAS.
- 7) 21N DISHWASHER-UNDER COUNTER BUILT-IN.
- 6) 54E WASHER/DRYER COMBINATION.
- 5) WIRE ROUTED BELOW FLOOR. CLAMP TO FLOOR AS NECESSARY WITH CLAMP 104497-01-000 OR WIRE TIE 8343-02-000. TO BE LOCATED ABOVE STORAGE AREAS EVERY 500 MM.
4. SEE WIRING DIAGRAM-BODY FOR ADDITIONAL INFORMATION.
3. ALL GROUND WIRES ARE TO BE COVERED WITH TUBING 8041-02-000.
2. ALL WIRES ARE TO BE CLAMPED WITH CLAMP 10497-05-000 WITHIN 200 OF OUTLET BOXES AND SPLICES,USE SCREW G67-10-12B,OR 39-10-12B.
1. ALL WIRE TO BE CLAMPED WITH CLAMP 10495-01-000 OR CLIP 80734-02-000 EVERY 600,USE SCREW G67-10-12B UNLESS OTHERWISE SPECIFIED.

- 11) 10W TV (REAR) AC 19" COLOR W/REMOTE.
- 10) SEE GENERATOR INSTALLATION FOR ADDITIONAL INFORMATION.

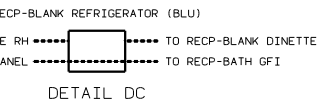
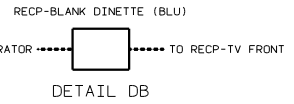
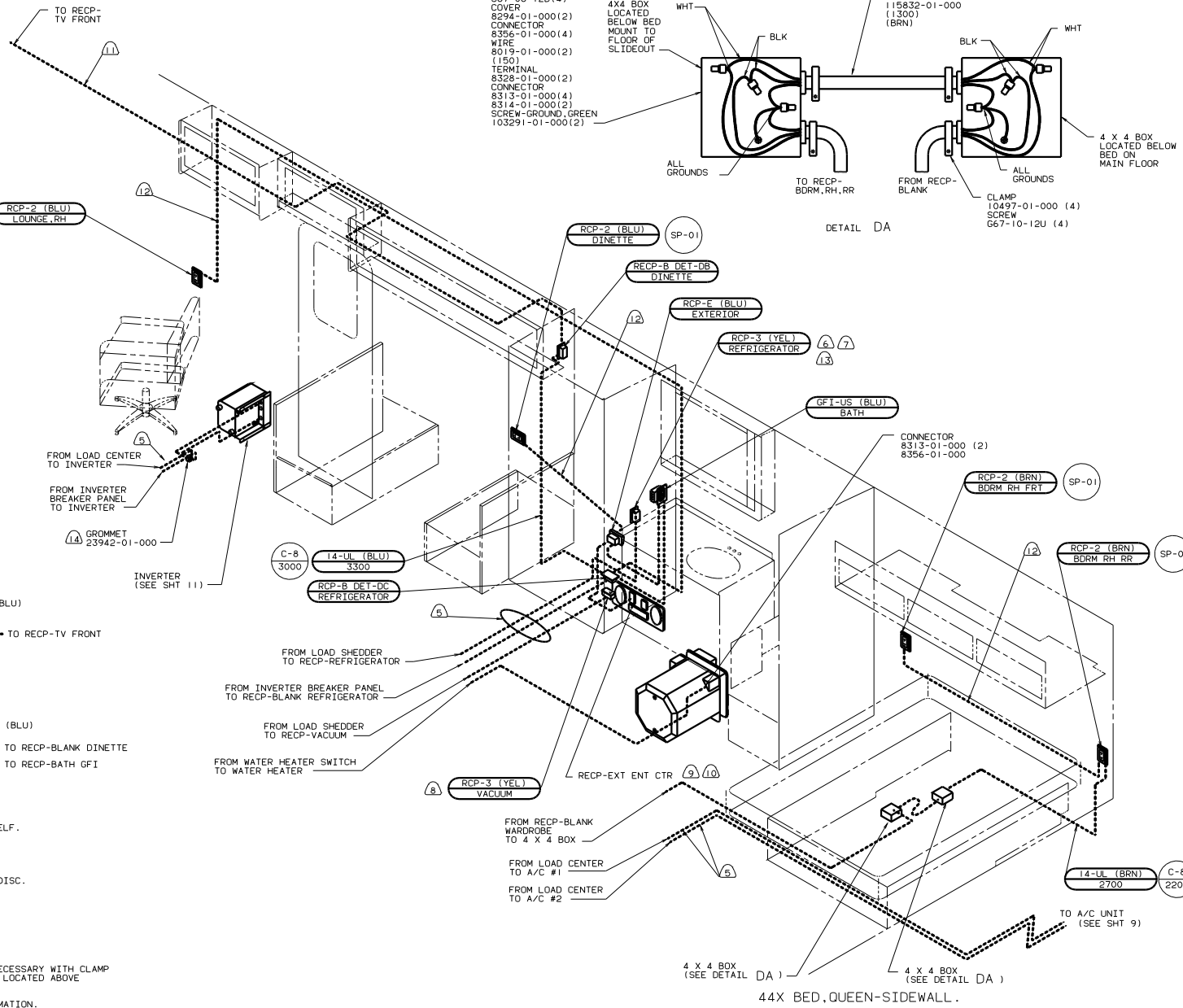
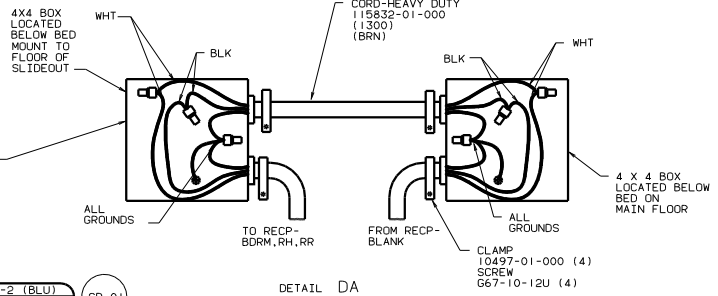


99 M37B
 1B1 USA STANDARDS
 IE3 ENERGY MGMT SYS
 78J ELECTRICAL SYSTEM-50 AMP

FOR ELECTRICAL TORQUE SPECIFICATIONS SEE DWG NO. 128783-01-000

FOR ELECTRICAL CALLOUTS SEE DWG NO. 121339-01-000

- BOX 8289-01-000(2)
- SCREW 667-08-12B(4)
- COVER 8294-01-000(2)
- CONNECTOR 8356-01-000(4)
- WIRE 8019-01-000(2)
- TERMINAL 8328-01-000(2)
- CONNECTOR 8313-01-000(4)
- SCREW-GROUND, GREEN 103291-01-000(2)



- NOTES:
1. ALL WIRE TO BE CLAMPED WITH CLAMP 10495-01-000 OR CLIP 80734-02-000 EVERY 600. USE SCREW 667-10-12B UNLESS OTHERWISE SPECIFIED.
 2. ALL WIRES ARE TO BE CLAMPED WITH CLAMP 10497-05-000 WITHIN 200 OF OUTLET BOXES AND SPLICES. USE SCREW 667-10-12B, OR 39-10-12B.
 3. ALL GROUND WIRES ARE TO BE COVERED WITH TUBING 8041-02-000.
 4. SEE WIRING DIAGRAM-BODY FOR ADDITIONAL INFORMATION.
- ⑬ LOCATE TOP OF REFRIGERATOR RECP 350 ABOVE SHELF.
 ⑫ WIRE IN SIDEWALL.
 ⑪ WIRE IN ROOF.
 ⑩ 105 EXTERIOR ENTERTAINMENT CENTER W/COMPACT DISC.
 ⑨ 76C EXTERIOR ENTERTAINMENT CENTER W/CASSETTE.
 ⑧ 22T VACUUM CLEANER-CENTRAL
 ⑦ 79W REFR/FREEZER-FOUR DOOR W/ICEMAKER.
 ⑥ 15U REFR/FREEZER-LG.DBL.DOOR W/ICEMAKER.
 ⑤ WIRE ROUTED BELOW FLOOR. CLAMP TO FLOOR AS NECESSARY WITH CLAMP 10497-01-000 OR WIRE TIES 8343-02-000. TO BE LOCATED ABOVE STORAGE AREAS EVERY 500 MM.

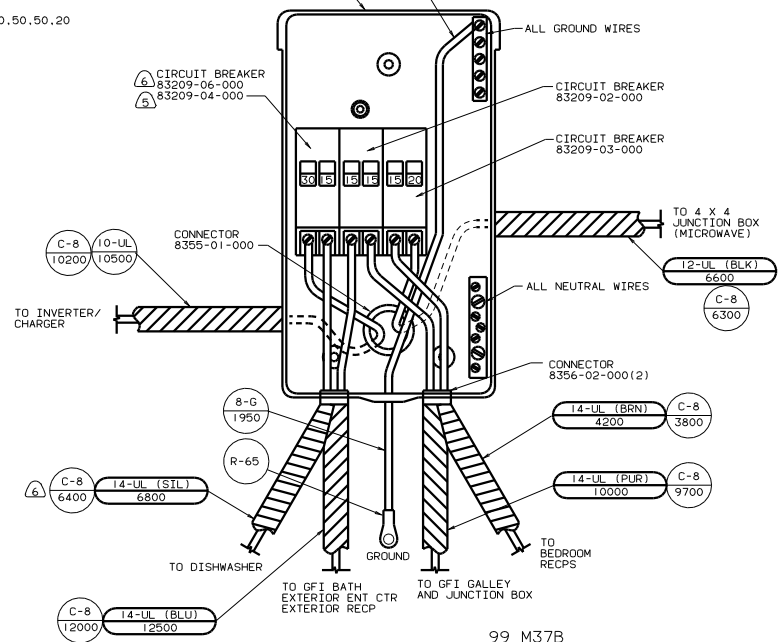
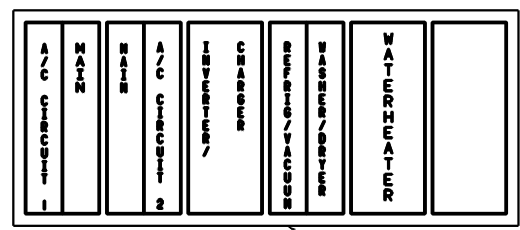
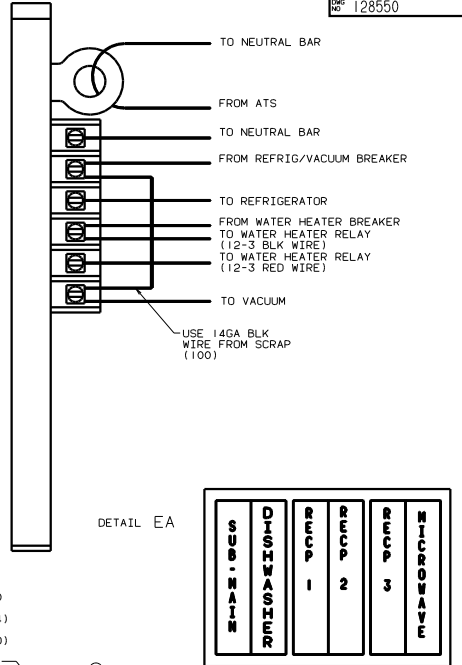
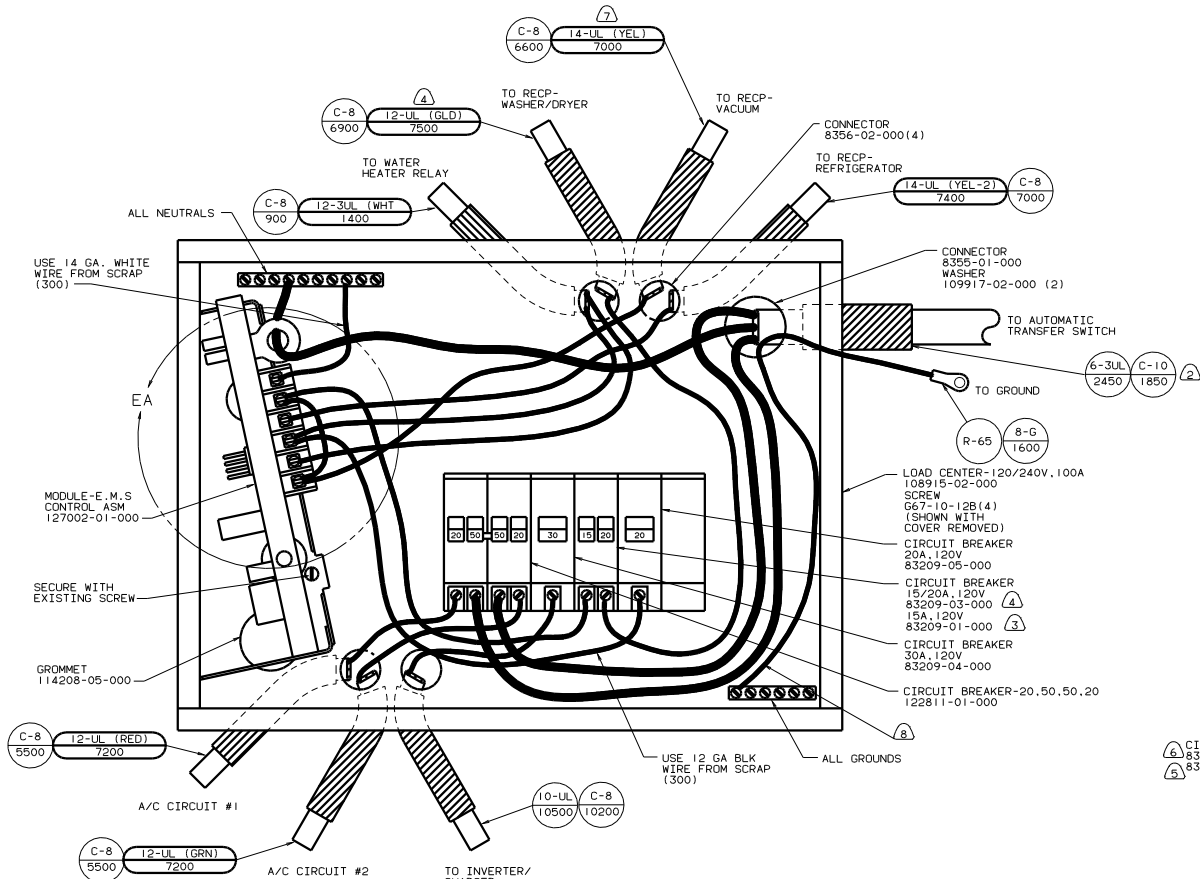
⑭ ADD GROMMET WHERE WIRES PASS THROUGH FLOOR RISER.

FOR ELECTRICAL TORQUE SPECIFICATIONS SEE DWG NO. 128783-01-000

FOR ELECTRICAL CALLOUTS SEE DWG NO. 121339-01-000

99 M37B
 1B1 USA STANDARDS
 1E3 ENERGY MGMT SYS
 78J ELECTRICAL SYSTEM-50 AMP

WIRING INSTL-BODY(11OR50US)
 SHEET 4 OF 19
 128550



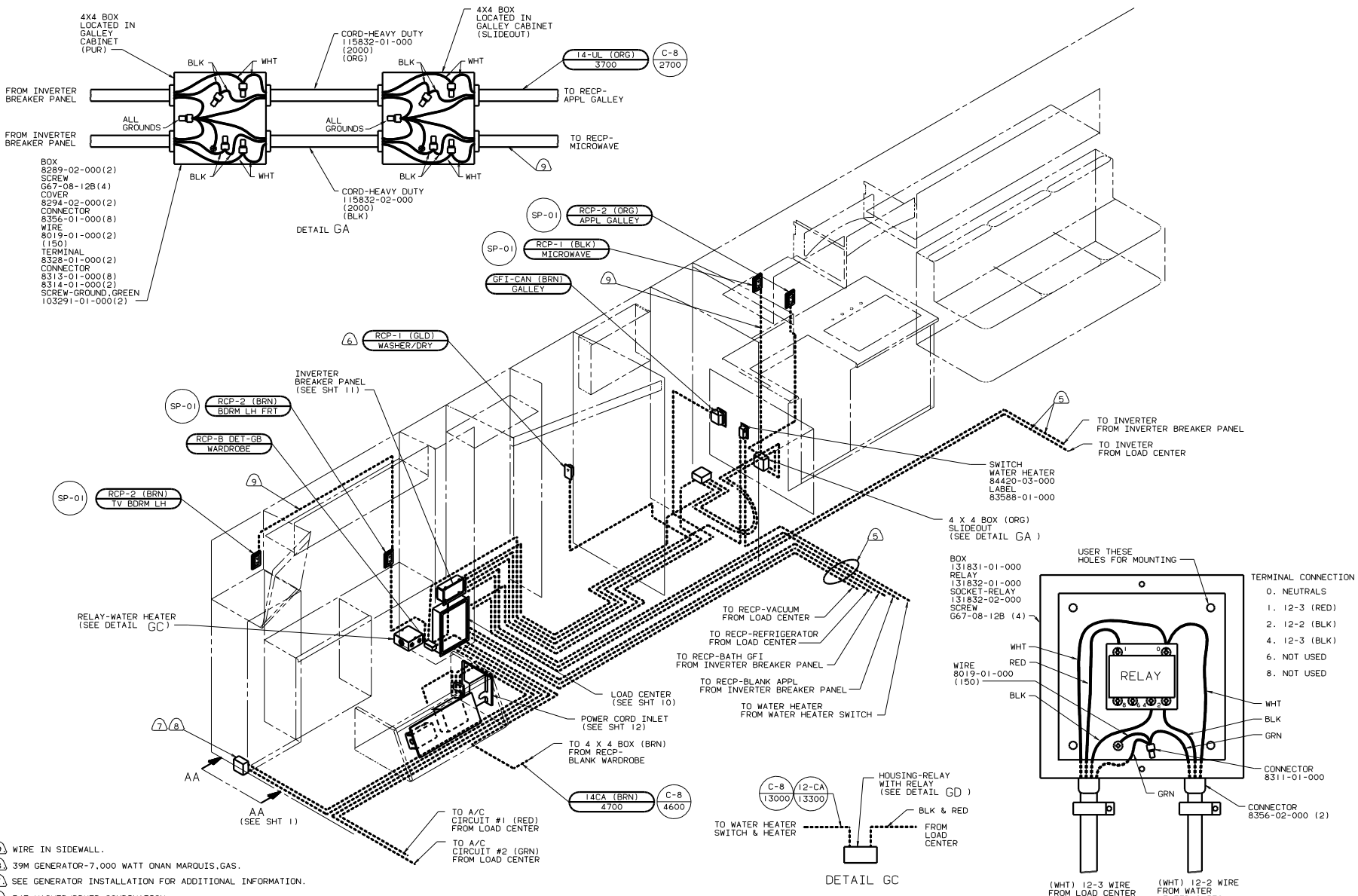
- INSTALL LABEL ON FRONT PANEL BELOW BREAKERS BETWEEN MOUNTING HOLES LABEL 95721-22-000
- ① 21N DISHWASHER-BUILT IN.
 - ② 21S DISHWASHER-WITHOUT.
 - ③ 54E WASHER/DRYER-COMBINATION.
 - ④ 21T WASHER/DRYER-WITHOUT.
 - ⑤ WIRE WITHOUT TERMINAL TO BE STRIPPER 10 AND SOLDER DIPPED.
1. ALL GROUND WIRES TO BE COVERED WITH TUBING 8041-02-000. ⑥ 22T VACUUM CLEANER CENTRAL.

FOR ELECTRICAL TORQUE SPECIFICATIONS SEE DWG NO. 128783-01-000

FOR ELECTRICAL CALLOUTS SEE DWG NO. 121339-01-000

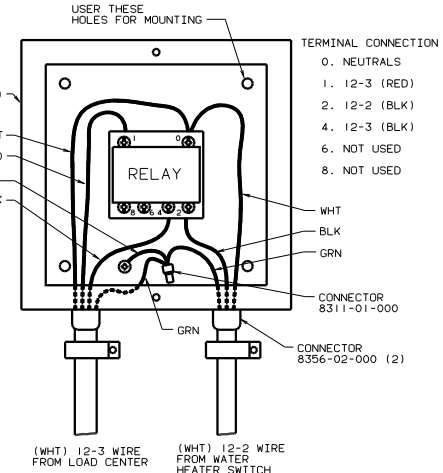
99 M37B
1B1 USA STANDARDS
1E3 ENERGY MGMT SYS
78J ELECTRICAL SYSTEM 50-AMP

WIRING INSTL-BODY (IC CC USA)
SHEET 5 OF 19

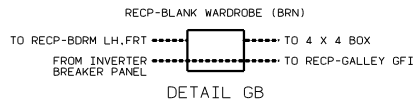


- BOX 8289-02-000(2)
- SCREW 667-08-12B(4)
- COVER 8294-02-000(2)
- CONNECTOR 8356-01-000(8)
- WIRE 8019-01-000(2)
- TERMINAL 8328-01-000(2)
- CONNECTOR 8313-01-000(8)
- 8314-01-000(2)
- SCREW-GROUND, GREEN 103291-01-000(2)

DETAIL GA



DETAIL GD



DETAIL GB

- 9. WIRE IN SIDEWALL.
- 8. 39M GENERATOR-7,000 WATT ONAN MARQUIS, GAS.
- 7. SEE GENERATOR INSTALLATION FOR ADDITIONAL INFORMATION.
- 6. 54E WASHER/DRYER COMBINATION.
- 5. WIRE ROUTED BELOW FLOOR. CLAMP TO FLOOR AS NECESSARY WITH CLAMP 10497-01-000, OR WIRE TIES 8343-02-000. TO BE LOCATED ABOVE STORAGE AREAS EVERY 500 MM.
- 4. SEE WIRING DIAGRAM-BODY FOR ADDITIONAL INFORMATION.
- 3. ALL GROUND WIRES ARE TO BE COVERED WITH TUBING 8041-02-000.
- 2. ALL WIRES ARE TO BE CLAMPED WITH CLAMP 10497-05-000 WITHIN 200 OF OUTLET BOXES AND SPLICES, USE SCREW 667-10-12B, OR 39-10-12B.
- 1. ALL WIRE TO BE CLAMPED WITH CLAMP 10495-01-000 OR CLIP 80734-02-000 EVERY 600, USE SCREW 667-10-12B UNLESS OTHERWISE SPECIFIED.

12. SEE GENERATOR INSTALLATION FOR ADDITIONAL INFORMATION.

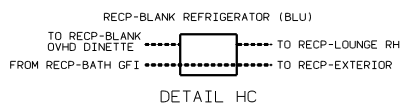
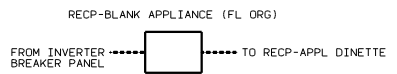
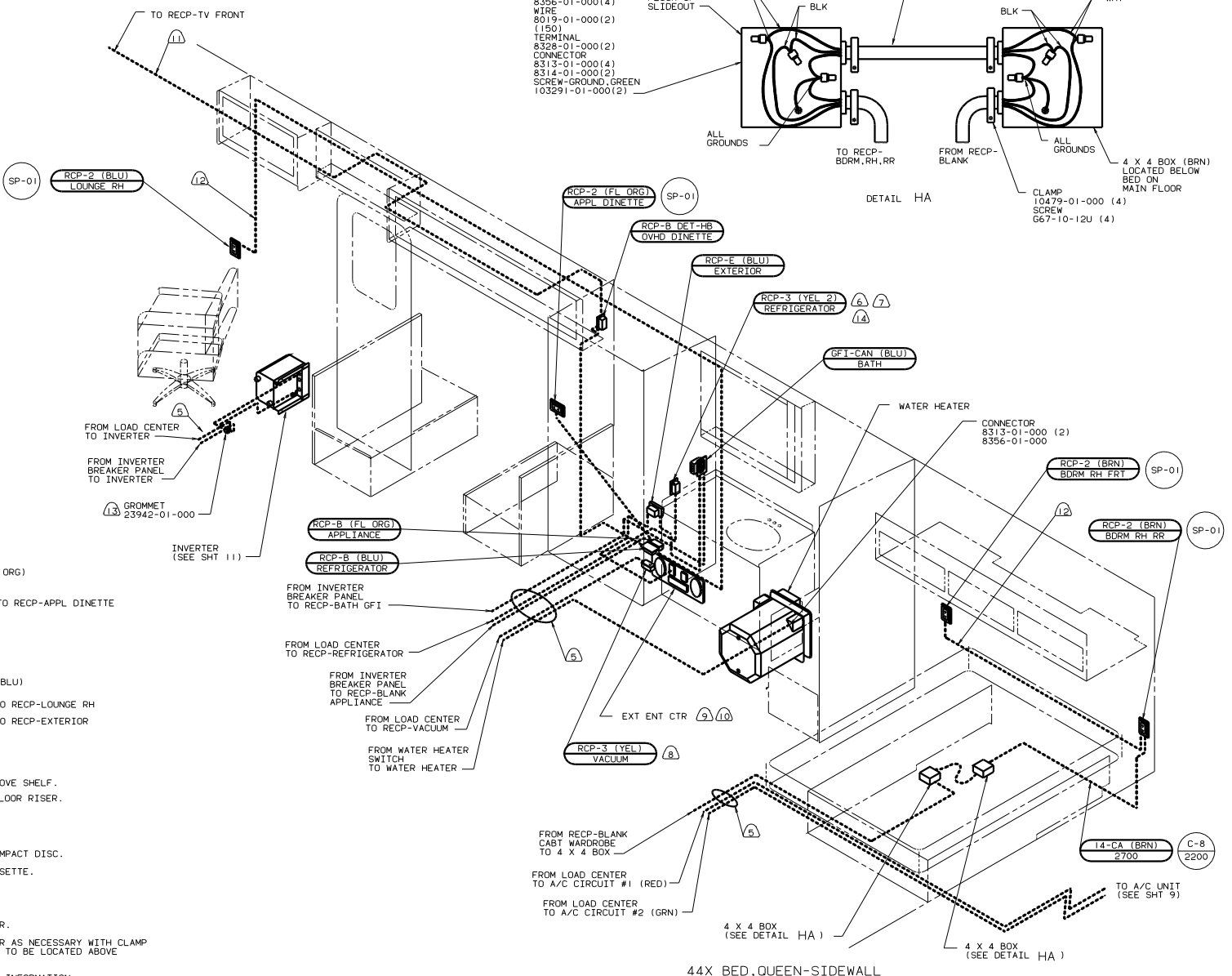
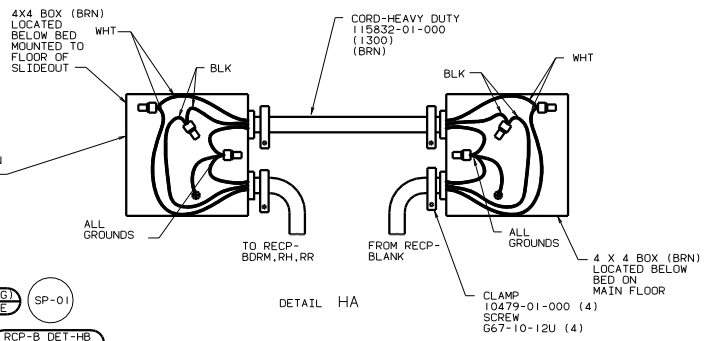
FOR ELECTRICAL TORQUE SPECIFICATIONS SEE DWG NO. 128783-01-000

FOR ELECTRICAL CALLOUTS SEE DWG NO. 121339-01-000

99 M37B
IE3 ENERGY MGMT SYS
265 CANADIAN HOUSING AND MOTOR VEHICLE STANDARDS
78J ELECTRICAL SYSTEM-50 AMP

WIRING INSTL-BODY(110150CAN)
1 of 19
128550

- BOX 8289-02-000(2)
- SCREW G67-08-12B(4)
- COVER 8294-02-000(2)
- CONNECTOR 8356-01-000(4)
- WIRE 8019-01-000(2)
- TERMINAL 1501
- CONNECTOR 8328-01-000(2)
- CONNECTOR 8313-01-000(4)
- 8314-01-000(2)
- SCREW-GROUND, GREEN 103291-01-000(2)



- 14 LOCATE TOP OF REFRIGERATOR RECP 350 ABOVE SHELF.
 - 13 ADD GROMMET WHERE WIRES PASS THROUGH FLOOR RISER.
 - 12 WIRE IN SIDEWALL.
 - 11 WIRE IN ROOF.
 - 10 105 EXTERIOR ENTERTAINMENT CENTER W/COMPACT DISC.
 - 9 76C EXTERIOR ENTERTAINMENT CENTER W/CASSETTE.
 - 8 22T VACUUM CLEANER-CENTRAL
 - 7 79W REFR/FREZZER-FOUR DOOR W/ICEMAKER.
 - 6 15U REFR/FREZZER-LG.DBL.DOOR W/ICEMAKER.
 - 5 WIRE ROUTED BELOW FLOOR. CLAMP TO FLOOR AS NECESSARY WITH CLAMP 10497-01-000 OR WIRE TIES 8343-02-000. TO BE LOCATED ABOVE STORAGE AREAS EVERY 500 MM.
4. SEE WIRING DIAGRAM-BODY FOR ADDITIONAL INFORMATION.
3. ALL GROUND WIRES ARE TO BE COVERED WITH TUBING 8041-02-000.
2. ALL WIRES ARE TO BE CLAMPED WITH CLAMP 10497-05-000 WITHIN 200 OF OUTLET BOXES AND SPLICES. USE SCREW G67-10-12B, OR 39-10-12B.
1. ALL WIRE TO BE CLAMPED WITH CLAMP 10495-01-000 OR CLIP 80734-02-000 EVERY 600. USE SCREW G67-10-12B UNLESS OTHERWISE SPECIFIED.

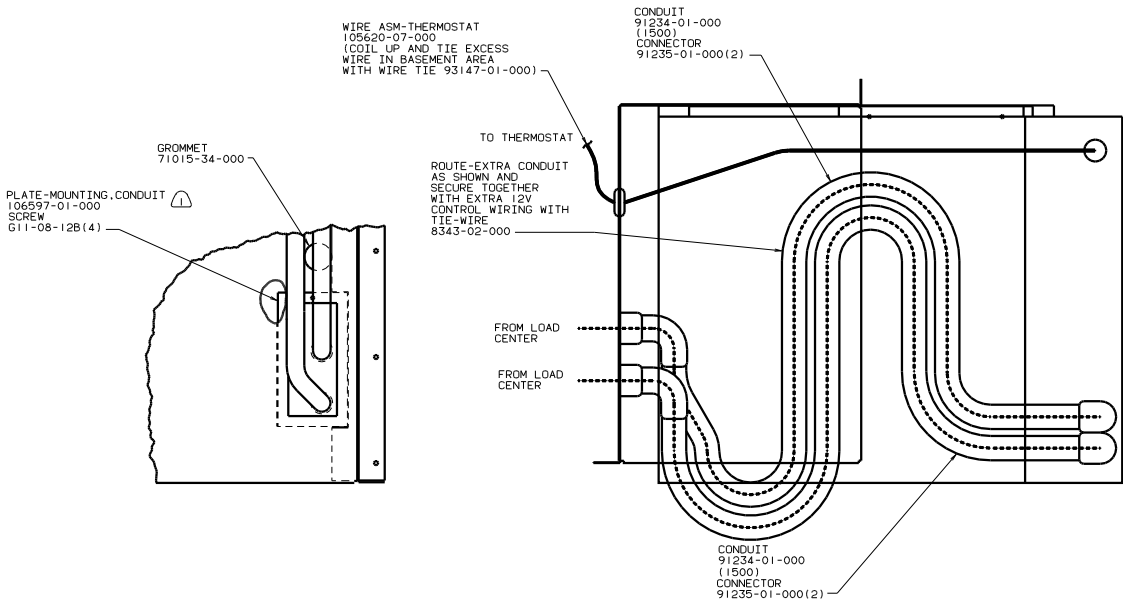
NOTES:

FOR ELECTRICAL TORQUE SPECIFICATIONS SEE DWG NO. 128783-01-000

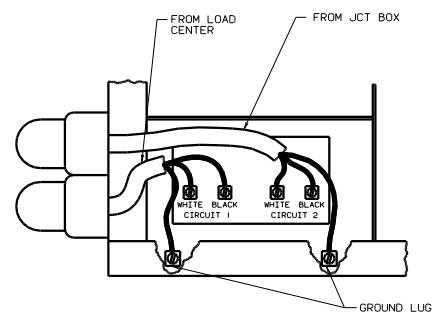
FOR ELECTRICAL CALLOUTS SEE DWG NO. 121339-01-000

99 M37B
265 CANADIAN HOUSING AND MOTOR VEHICLE STANDARDS IE3 ENERGY MGMT SYS 78J ELECTRICAL SYSTEM-50 AMP

WIRING INSTL-BODY(110850CAN)
128550



VIEW AB-AB



SEAL EDGES WITH TACKY TAPE.

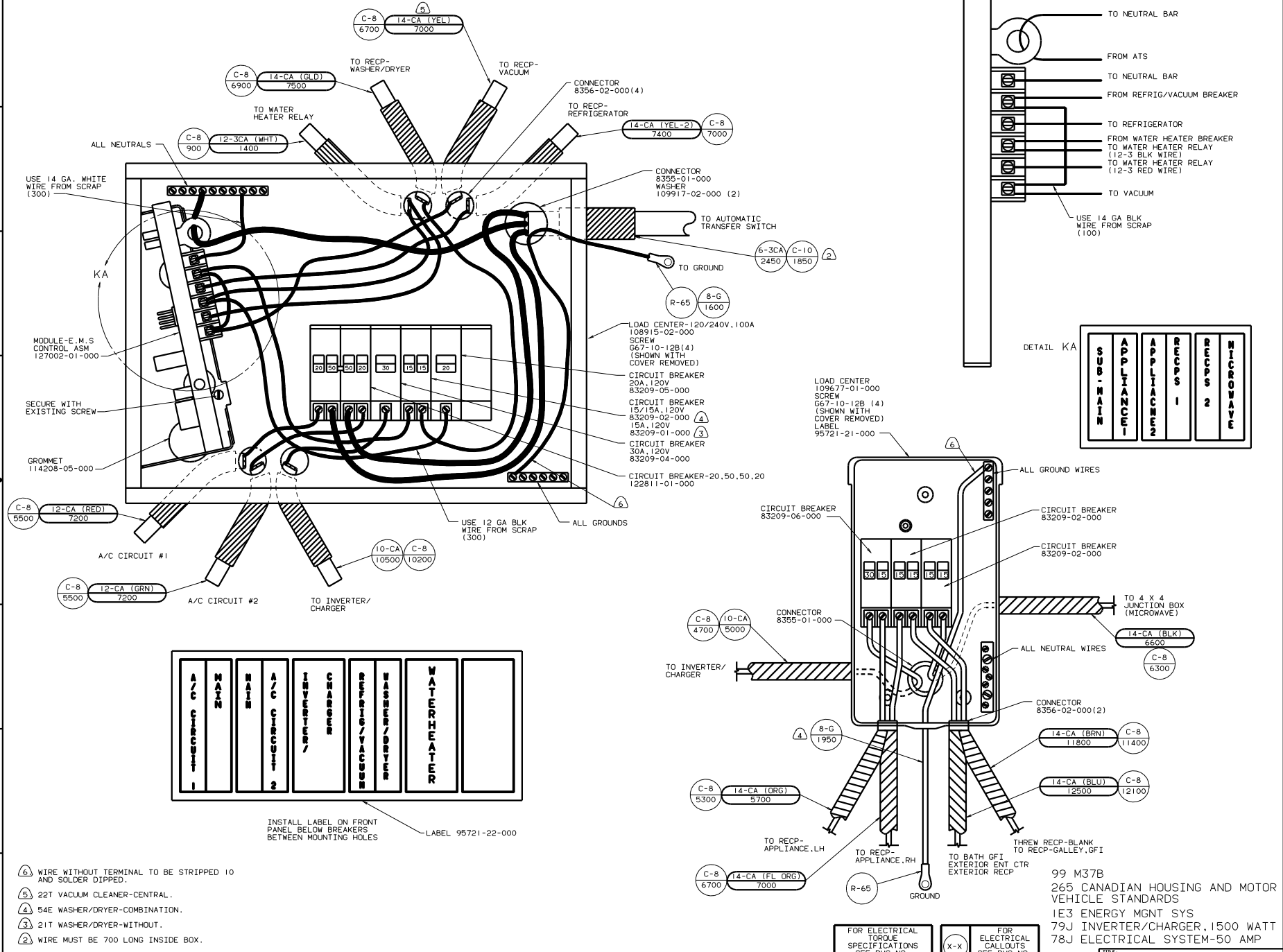
NOTES:

FOR ELECTRICAL TORQUE SPECIFICATIONS SEE DWG NO. 128783-01-000

FOR ELECTRICAL CALLOUTS SEE DWG NO. 121339-01-000

99 M37B
 1B1 USA STANDARDS
 265 CANADIAN HOUSING AND MOTOR VEHICLE STANDARDS

TITLE		DRAWING NO.	
WIRING INSTL-BODY(CENTL A/C)		128550	
SHEET 8 OF 19		1E	



DETAIL KA

W	M	I	C	R	O	W
W	A	S	H	E	R	S
R	E	C	I	P	E	R
A	P	P	L	A	N	C
A	P	P	L	A	N	C
S	U	B	-	M	A	I

W	A	S	H	E	R	S
R	E	C	I	P	E	R
A	P	P	L	A	N	C
A	P	P	L	A	N	C
S	U	B	-	M	A	I

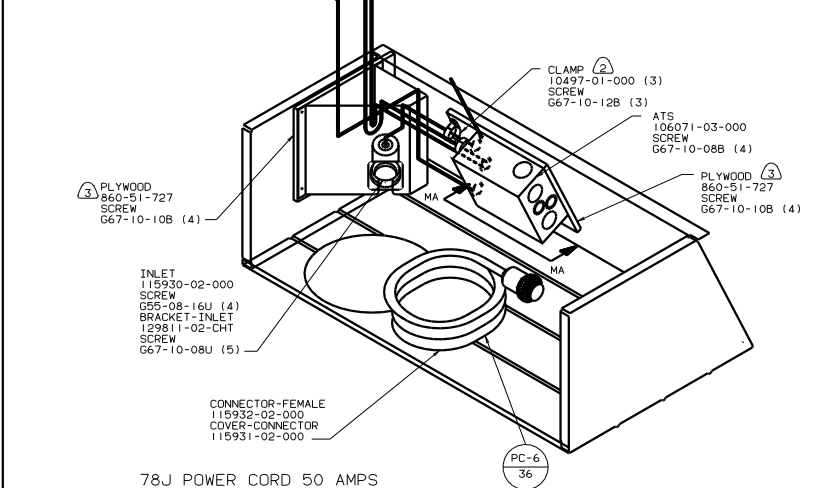
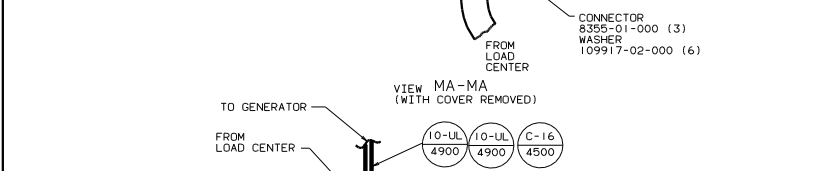
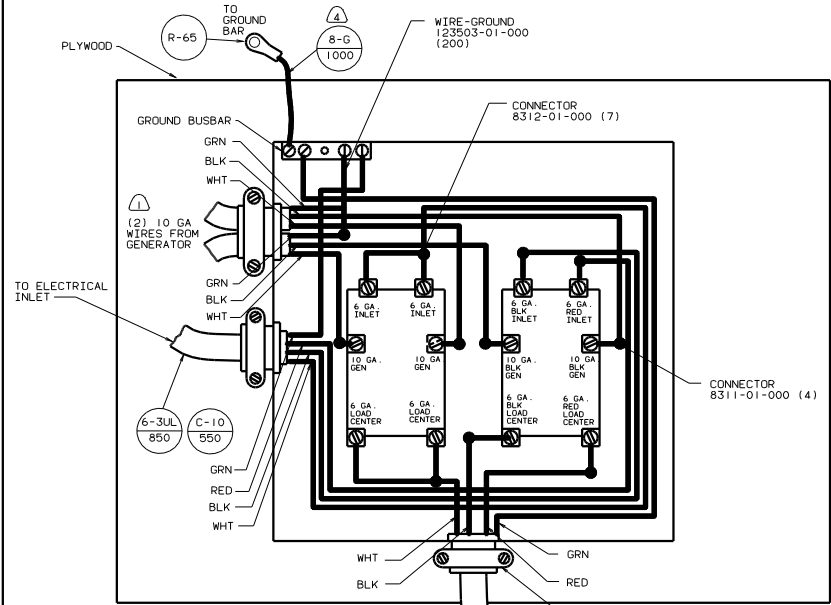
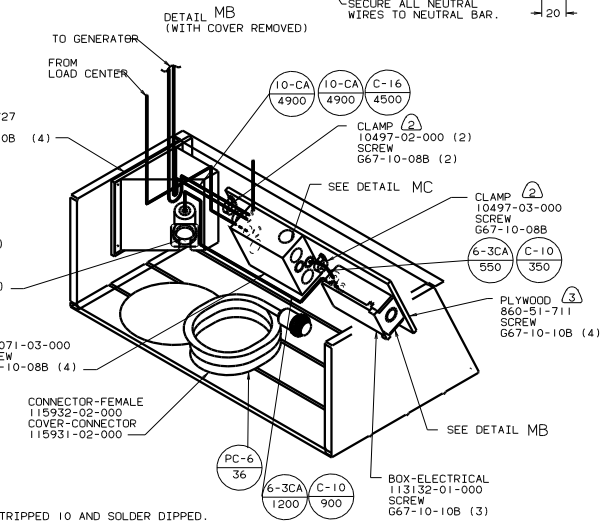
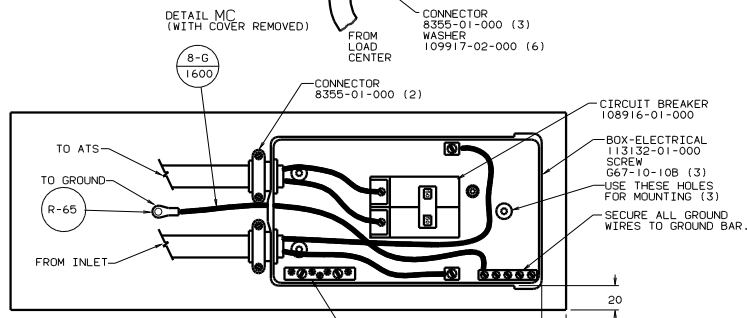
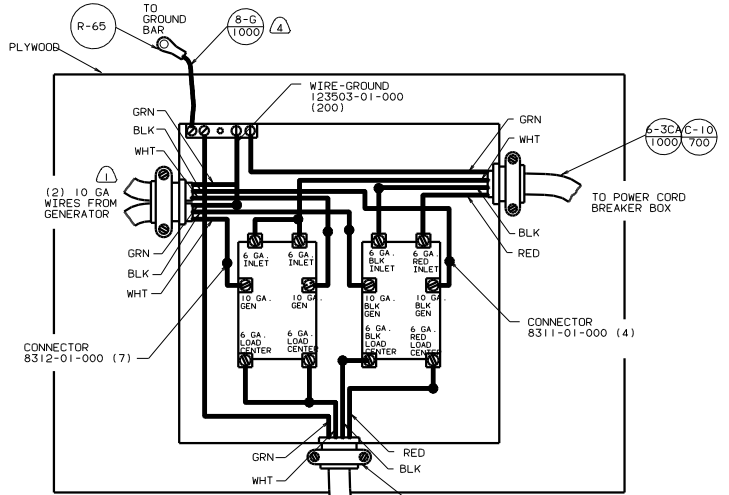
INSTALL LABEL ON FRONT PANEL BELOW BREAKERS BETWEEN MOUNTING HOLES LABEL 95721-22-000

- ⑥ WIRE WITHOUT TERMINAL TO BE STRIPPED 10 AND SOLDER DIPPED.
 - ⑤ 22T VACUUM CLEANER-CENTRAL.
 - ④ 54E WASHER/DRYER-COMBINATION.
 - ③ 21T WASHER/DRYER-WITHOUT.
 - ② WIRE MUST BE 700 LONG INSIDE BOX.
1. ALL GROUND WIRES TO BE COVERED WITH TUBING 8041-02-000.

FOR ELECTRICAL TORQUE SPECIFICATIONS SEE DWG NO. 128783-01-000

FOR ELECTRICAL CALLOUTS SEE DWG NO. 121339-01-000

99 M37B
 265 CANADIAN HOUSING AND MOTOR VEHICLE STANDARDS
 1E3 ENERGY MGMT SYS
 79J INVERTER/CHARGER, 1500 WATT
 78J ELECTRICAL SYSTEM-50 AMP



78J POWER CORD 50 AMPS
IBI USA STANDARDS

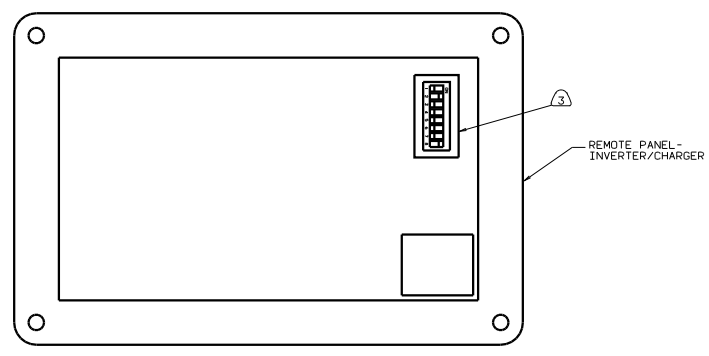
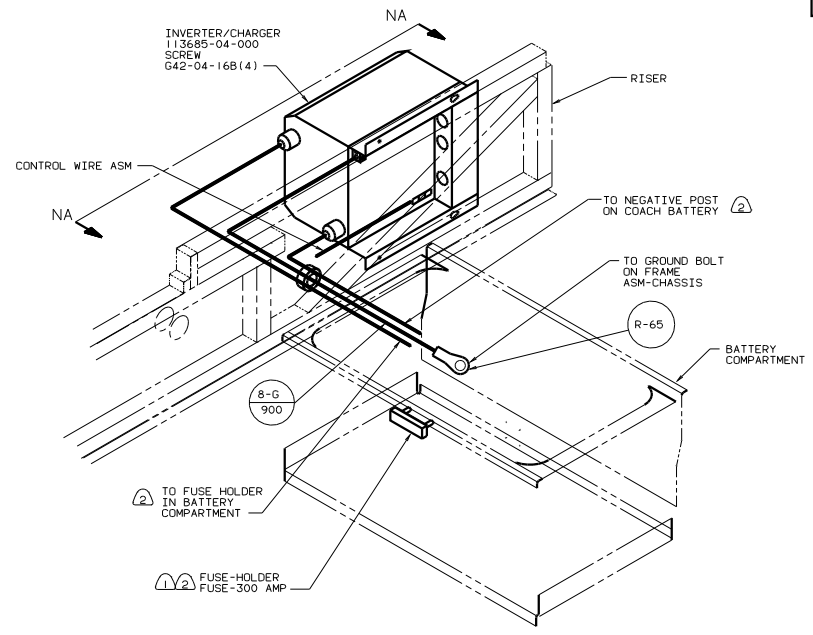
- ④ WIRES TO BE STRIPPED 10 AND SOLDER DIPPED.
- ③ PAINT EXPOSED SURFACES BLACK WITH 106112-01-000.
- ② ALL WIRES TO BE CLAMPED WITH IN 200 OF BOX.
- ① 39M GENERATOR-7,000 WATT, ONAN MARQUIS, GAS.

78J POWER CORD-50 AMPS
265 CANADIAN HOUSING AND
MOTOR VEHICLE STANDARDS

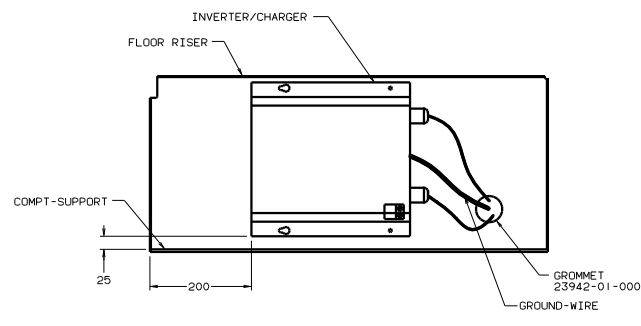
FOR ELECTRICAL TORQUE SPECIFICATIONS SEE DWG NO. 128783-01-000	X-X	FOR ELECTRICAL CALLOUTS SEE DWG NO. 121339-01-000
--	-----	---

99 M37B
78J POWER CORD-50 AMPS
39M GENERATOR 7,000 WATT
ONAN MARQUIS GAS

TITLE	WIRING INSTL-BODY(ATS)
NO. OF SHEETS	2
SHEET NO.	10 OF 19
DWG NO.	128550



VIEW PK-PK



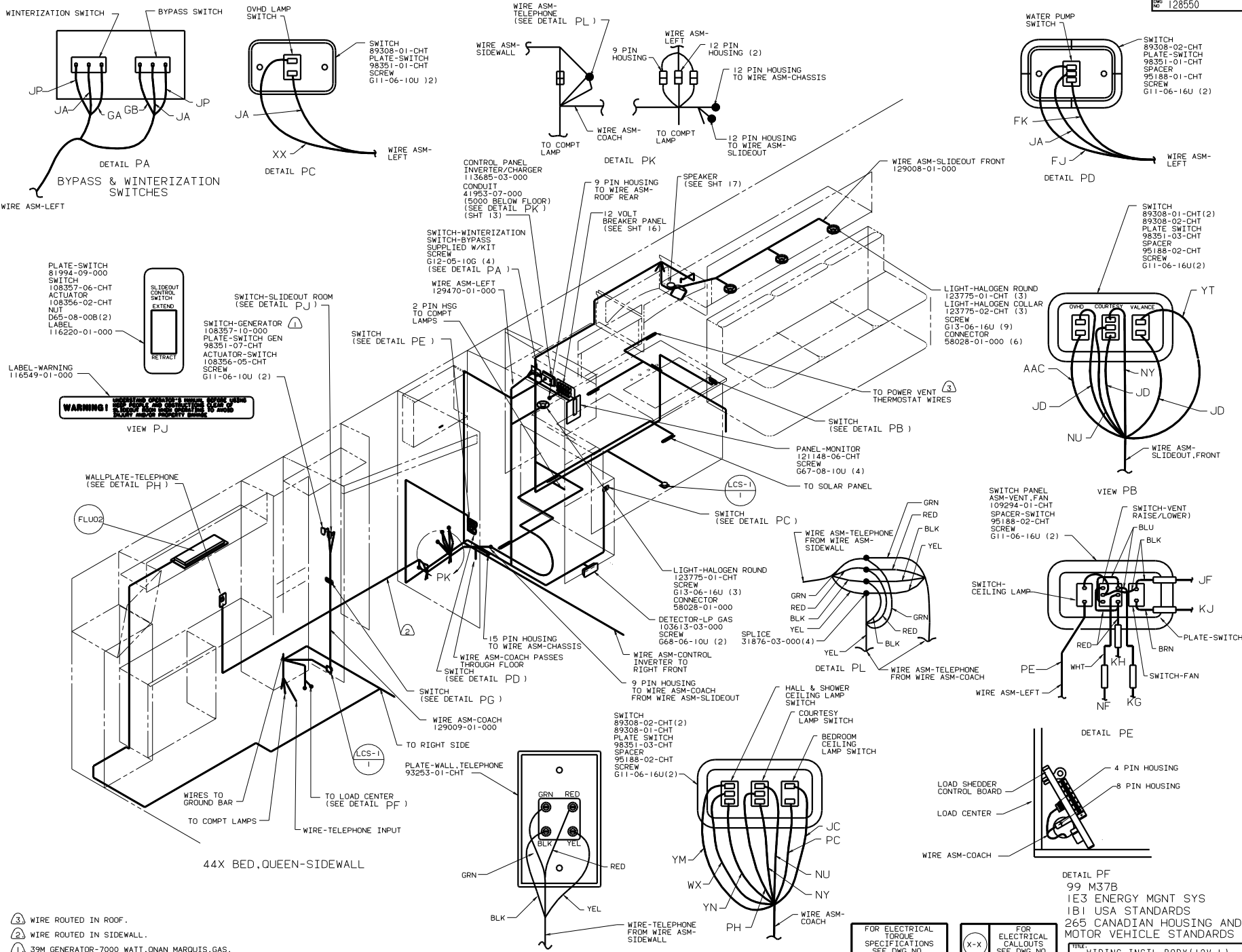
VIEW NA-NA

- NOTES:
- (3) DIP SWITCHES MUST BE SET AS FOLLOWS
1 OFF, 2 ON, 3 OFF, 4 OFF, 5 OFF, 6 OFF, 7 OFF, 8 ON.
 - (2) SEE WIRING INSTL-CHASSIS FOR ADDITIONAL INFORMATION.
 - (1) MOUNTED TO BACK OF BATTERY COMPARTMENT.

(X-X)	FOR ELECTRICAL CALLOUTS SEE DWG NO. 121339-01-000	FOR ELECTRICAL TORQUE SPECIFICATIONS SEE DWG NO. 128783-01-000

99 M37B
IBI USA STANDARDS
265 CANADIAN HOUSING AND
MOTOR VEHICLE STANDARDS
79J INVERTER/CHARGER 1500 WATT

TITLE: WIRING INSTL-BODY(IC)	
NO. OF SHEETS	TOTAL SHEETS
SHEET 11 OF 19	16
DATE	128550



WARNING!
 THIS WIRING DIAGRAM IS INTENDED FOR USE BY A QUALIFIED ELECTRICIAN. IT IS NOT TO BE USED AS A GUIDE FOR FIELD WIRING. ALWAYS REFER TO THE WIRING MANUAL FOR COMPLETE WIRING INSTRUCTIONS AND SAFETY PRECAUTIONS.

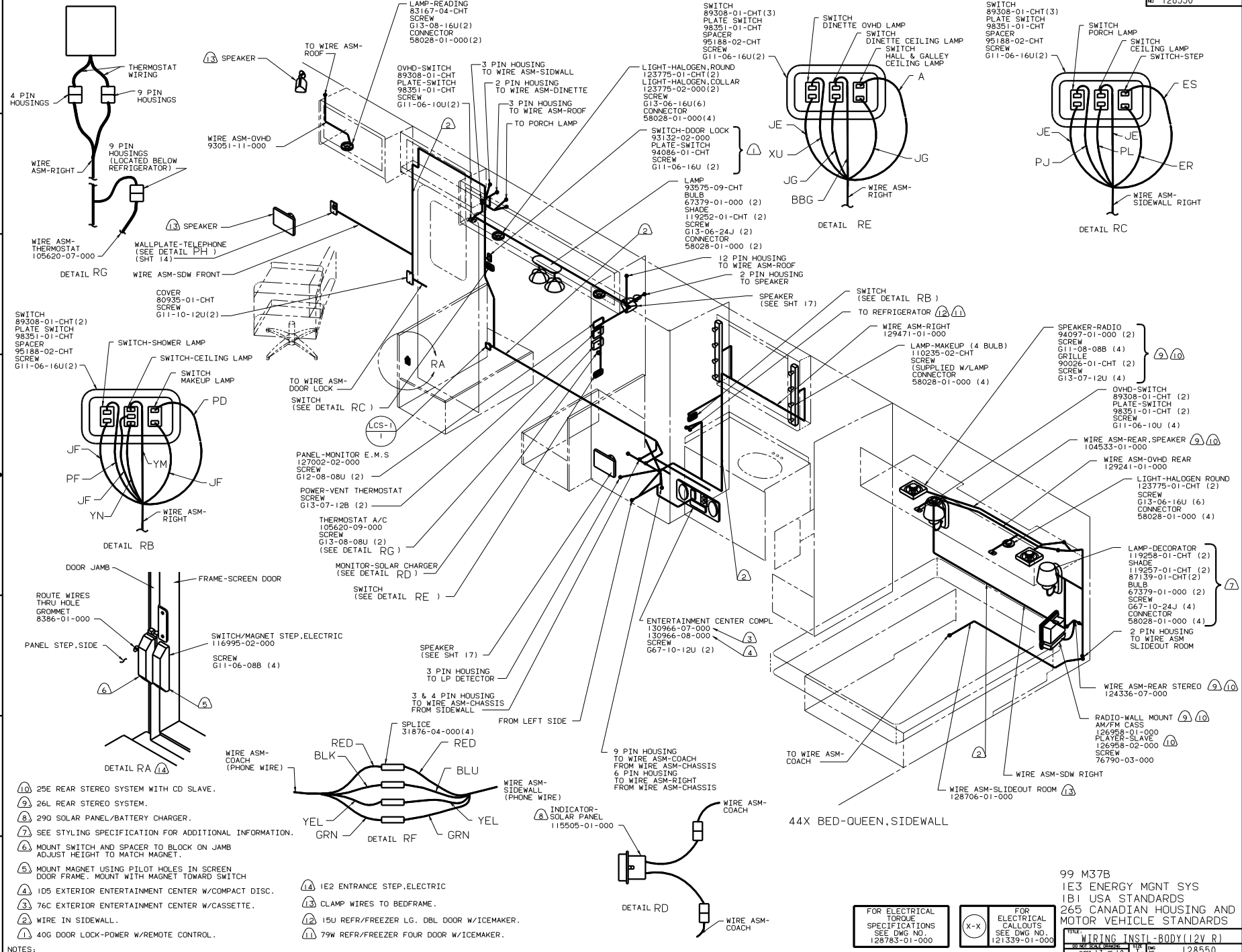
- ③ WIRE ROUTED IN ROOF.
- ② WIRE ROUTED IN SIDEWALL.
- ① 39M GENERATOR-7000 WATT, ONAN MARQUIS, GAS.

FOR ELECTRICAL TORQUE SPECIFICATIONS SEE DWG NO. 128783-01-000

FOR ELECTRICAL CALLOUTS SEE DWG NO. 121339-01-000

DETAIL PF
 99 M37B
 IE3 ENERGY MGMT SYS
 IBI USA STANDARDS
 265 CANADIAN HOUSING AND MOTOR VEHICLE STANDARDS

DATE: _____
 DRAWING NO. 128550
 SHEET 12 OF 19



- ⑩ 25E REAR STEREO SYSTEM WITH CD SLAVE.
- ⑨ 26L REAR STEREO SYSTEM.
- ⑧ 290 SOLAR PANEL/BATTERY CHARGER.
- ⑦ SEE STYLING SPECIFICATION FOR ADDITIONAL INFORMATION.
- ⑥ MOUNT SWITCH AND SPACER TO BLOCK ON JAMB ADJUST HEIGHT TO MATCH MAGNET.
- ⑤ MOUNT MAGNET USING PILOT HOLES IN SCREEN DOOR FRAME. MOUNT WITH MAGNET TOWARD SWITCH
- ④ I05 EXTERIOR ENTERTAINMENT CENTER W/COMPACT DISC.
- ③ 76C EXTERIOR ENTERTAINMENT CENTER W/CASSETTE.
- ② WIRE IN SIDEWALL.
- ① 40G DOOR LOCK-POWER W/REMOTE CONTROL.

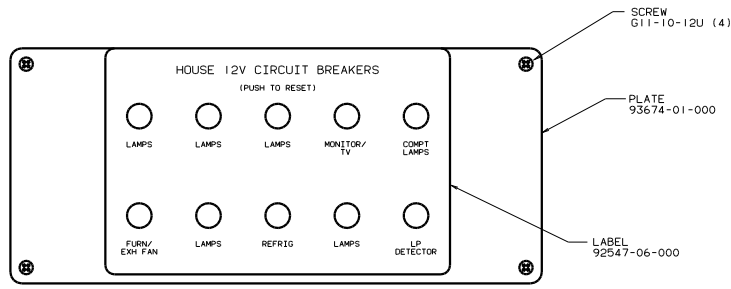
- ⑭ IE2 ENTRANCE STEP.ELECTRIC
- ⑬ CLAMP WIRES TO BEDFRAME.
- ⑫ I5U REFR/FREEZER LG. DBL DOOR W/ICEMAKER.
- ⑪ 79W REFR/FREEZER FOUR DOOR W/ICEMAKER.

FOR ELECTRICAL TORQUE SPECIFICATIONS SEE DWG NO. 128783-01-000

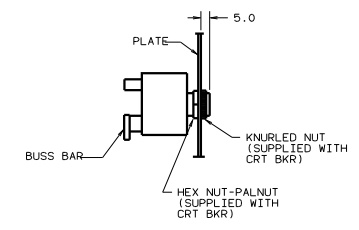
FOR ELECTRICAL CALLOUTS SEE DWG NO. 121339-01-000

99 M37B
 IE3 ENERGY MGMT SYS
 I81 USA STANDARDS
 265 CANADIAN HOUSING AND MOTOR VEHICLE STANDARDS

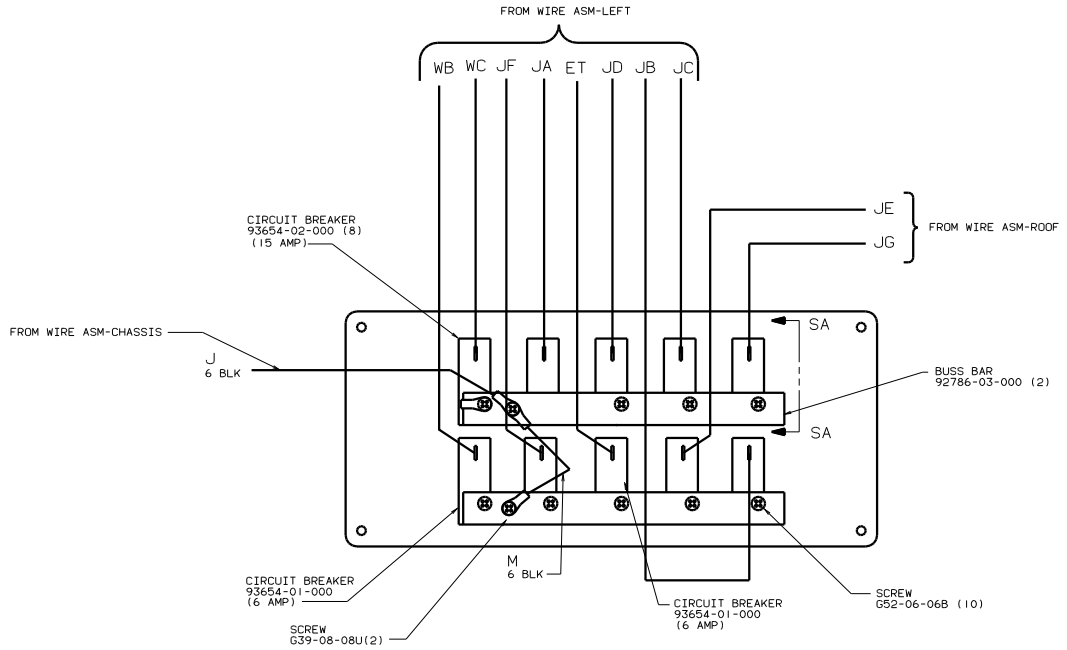
TITLE: WIRING INSTL-BODY(12V R)
 TO THE SCALE OF THE DRAWING: 1:1
 SHEET 13 OF 19
 128550



CIRCUIT BREAKER
(FRONT VIEW)



SECTION SA-SA

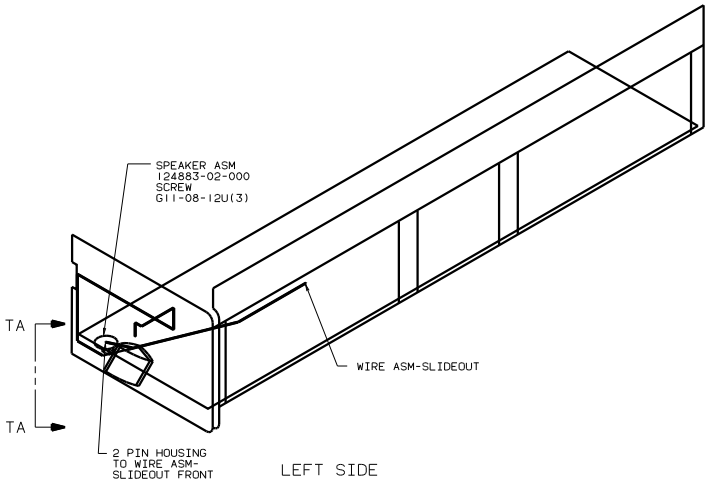
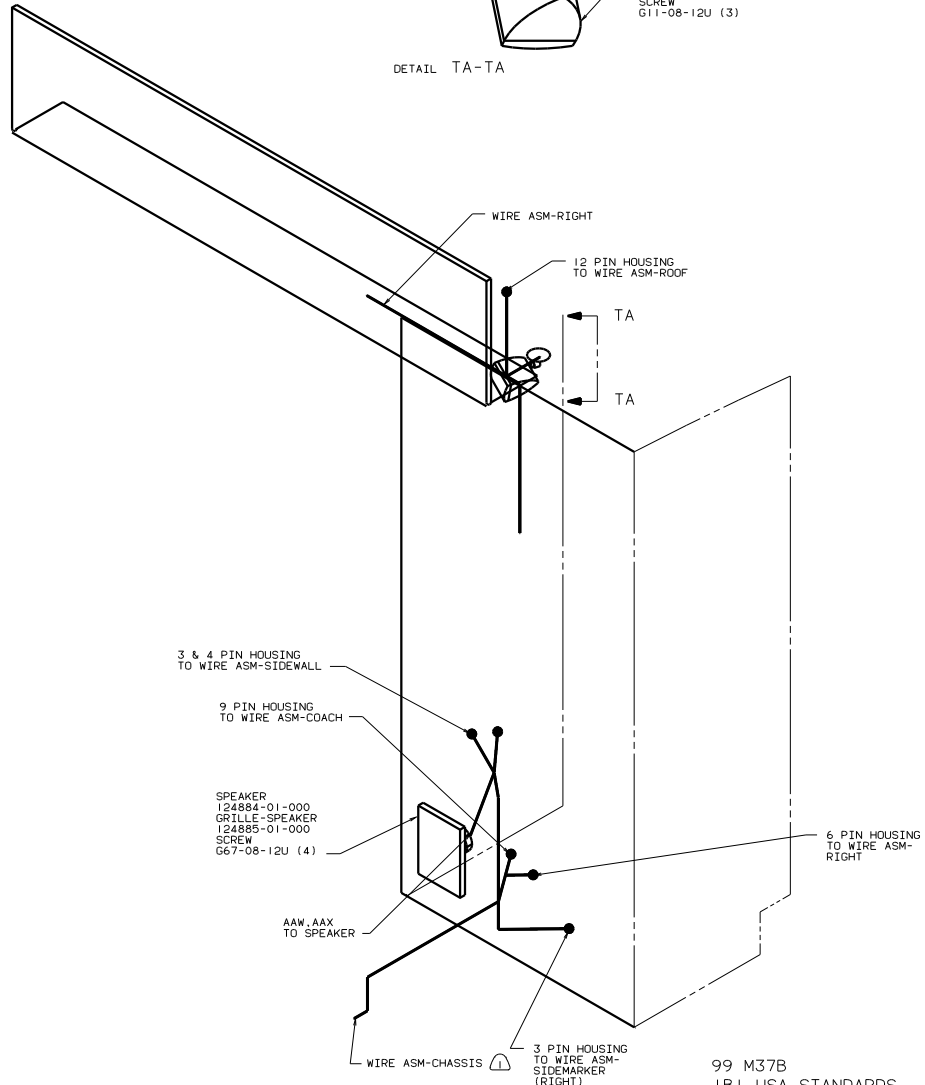
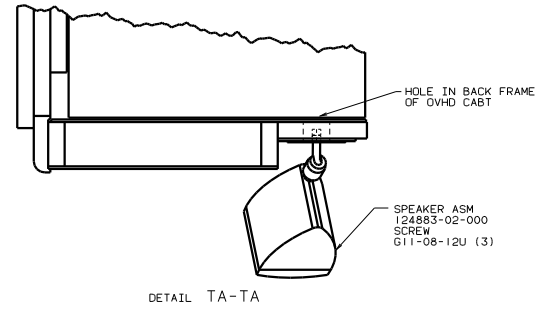


CIRCUIT BREAKER
(BACK VIEW)

FOR ELECTRICAL
TORQUE
SPECIFICATIONS
SEE DWG NO
128783-01-000

99 M37B
1B1 USA STANDARDS
265 CANADIAN HOUSING AND
MOTOR VEHICLE STANDARDS

TITLE		WIRING INSTL-BODY(12 BP)	
NO	REV	DATE	BY
1	1		
SHEET 14 OF 19		128550	

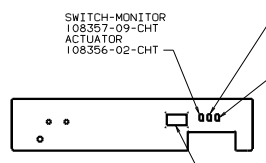
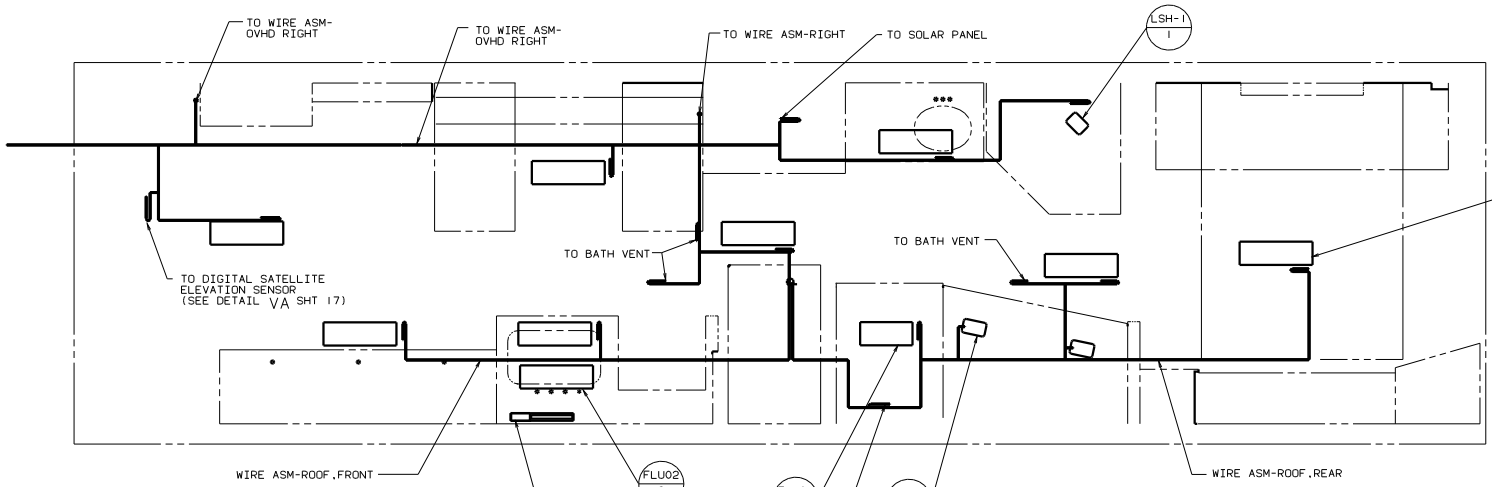


SEE WIRING INSTL-CHASSIS FOR ADDITIONAL INFORMATION.
1. SEE WIRING INSTL-FRONT END FOR ADDITIONAL INFORMATION.

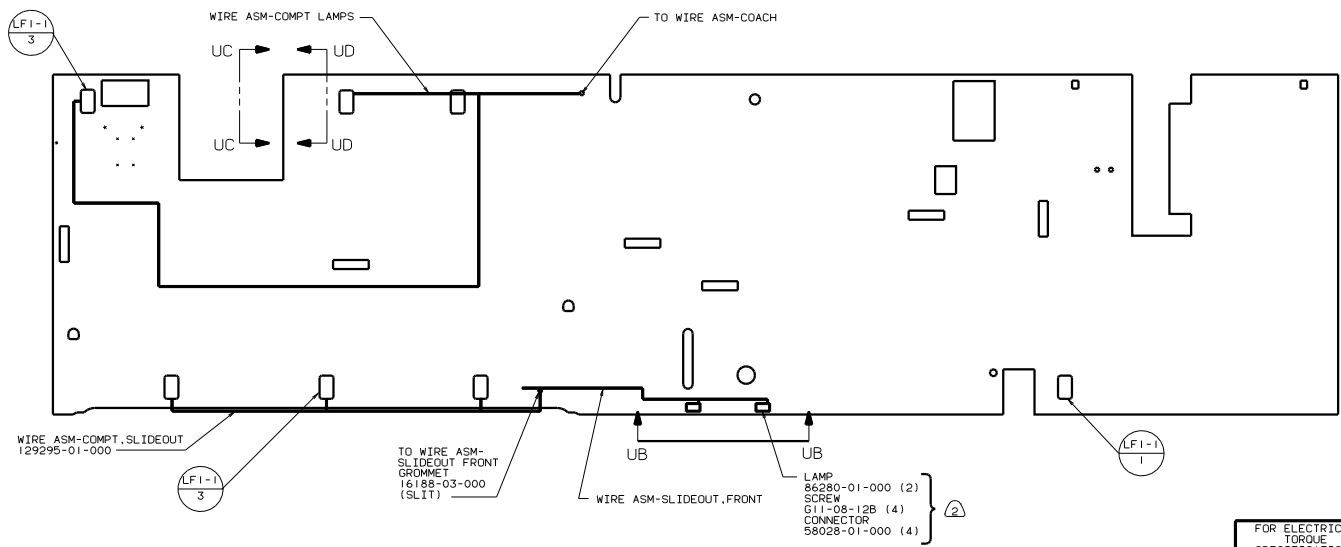
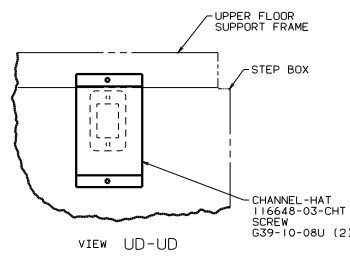
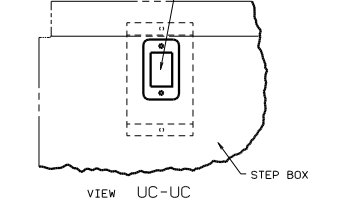
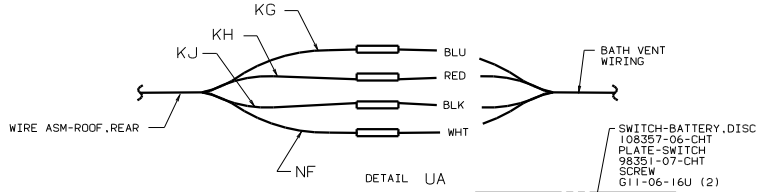
FOR ELECTRICAL TORQUE SPECIFICATIONS SEE DWG NO. 128783-01-000

99 M37B
1B1 USA STANDARDS
265 CANADIAN HOUSING AND MOTOR VEHICLE STANDARDS

TITLE		DWG NO.	
WIRING INSTL - BODY (DLX SNO)		128550	
DATE	BY	CHKD	APP'D
15	19		



- SWITCH-MONITOR
108357-09-CHT
ACTUATOR
108356-02-CHT
- SWITCH-LAMP
108357-01-CHT
ACTUATOR
108356-02-CHT
- SWITCH-PUMP
108357-08-CHT
ACTUATOR
108356-02-CHT
- MONITOR PANEL
129561-01-CHT
SCREW
G39-08-08U (4)
- LAMP-FLUORESCENT
113371-01-000
SCREW
G67-08-12U (2)
CONNECTOR
58028-01-000



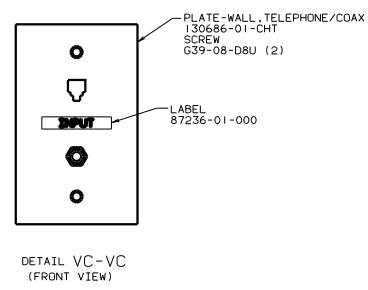
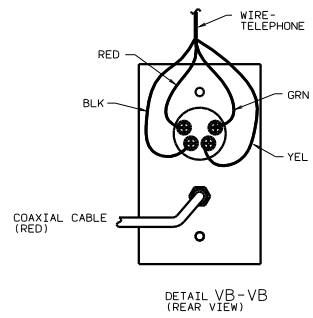
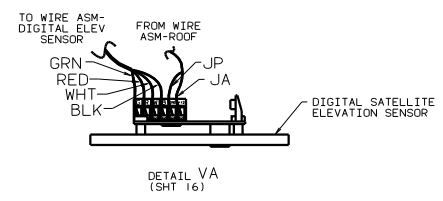
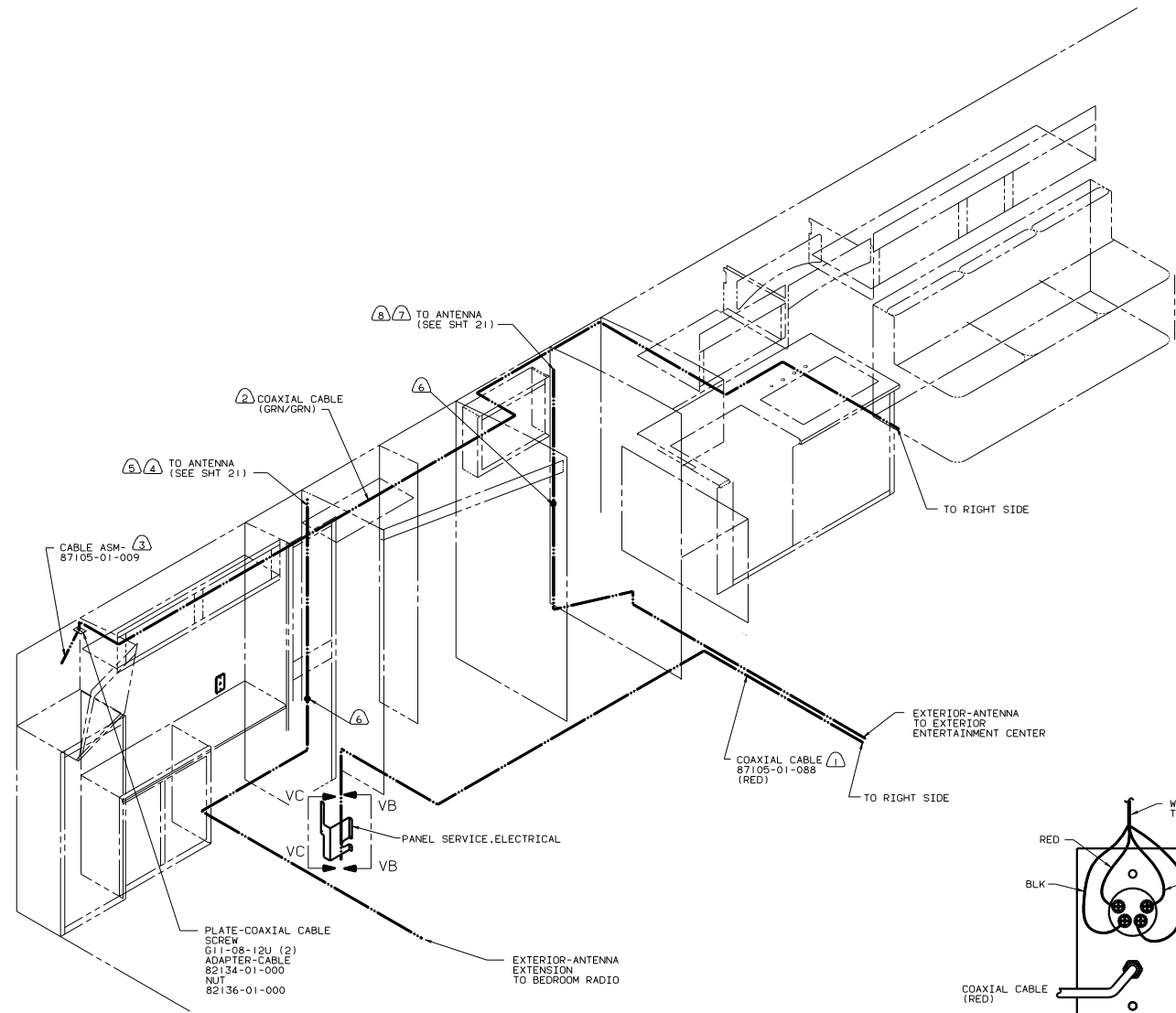
- ② INSTALL AFTER HOLDING TANK BRACKET IS INSTALLED.
- ⚠ 48V CEILING LIGHTS-FLUORESCENT LIGHTS, RECESSED.

NOTES:

FOR ELECTRICAL
TORQUE
SPECIFICATIONS
SEE DWG NO.
128783-01-000

99 M37B
1B1 USA STANDARDS
265 CANADIAN HOUSING AND
MOTOR VEHICLE STANDARDS

TITLE	WIRING INSTL-BODY (12 CL)
NO. OF SHEETS	16 OF 19
REV	1 E
DWG NO.	128550



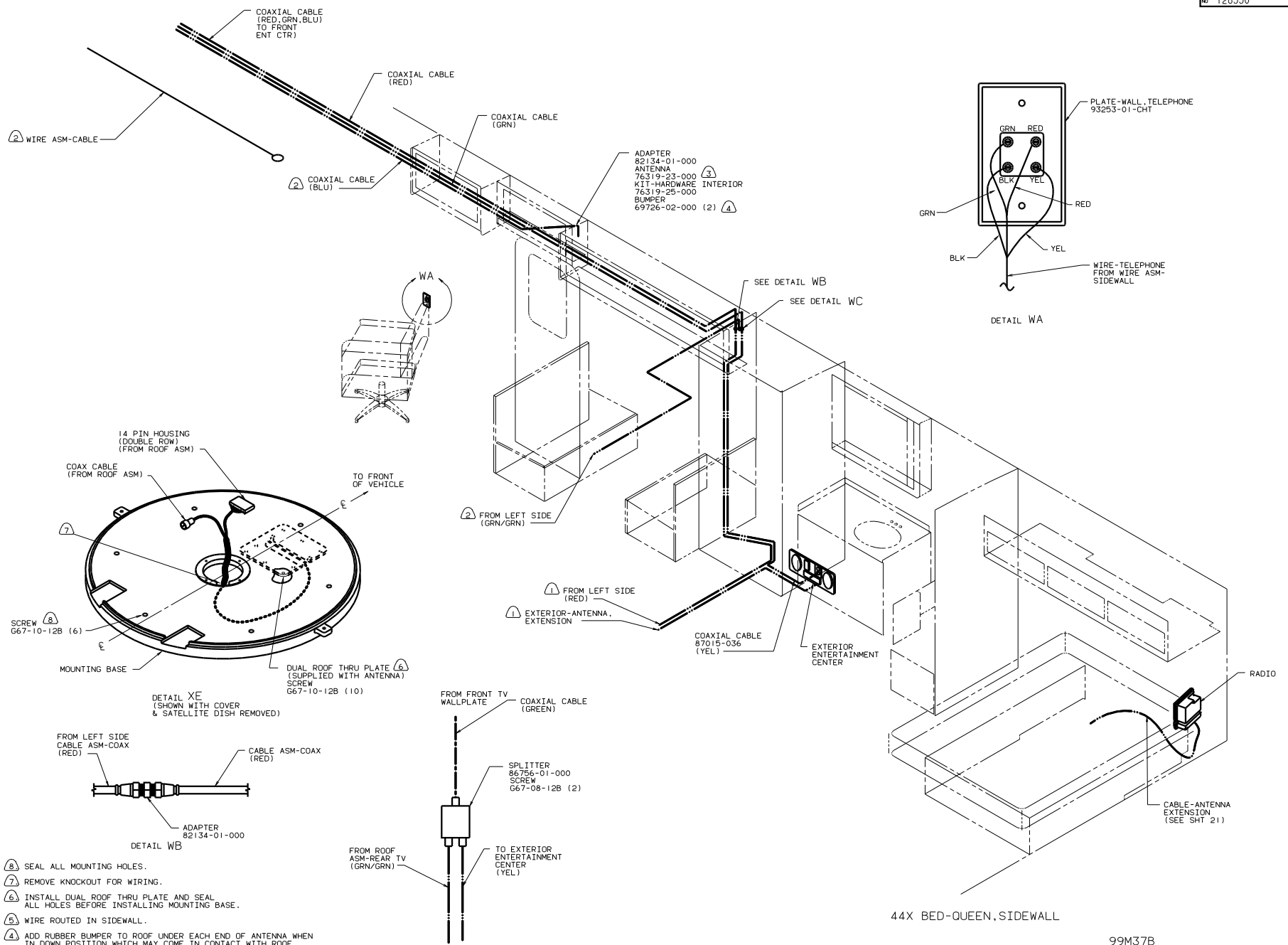
- ⑧ 105 EXTERIOR ENTERTAINMENT CTR W/COMPACT DISK.
- ⑦ 76C EXTERIOR ENTERTAINMENT CTR W/CASSETTE.
- ⑥ WRAP SPLICE WITH TAPE.
- ⑤ 25E REAR STEREO SYSTEM WITH CD SLAVE.
- ④ 26L REAR STEREO SYSTEM.
- ③ 10W TV (REAR) AC 19" COLOR W/REMOTE.
- ② WIRE ROUTED IN ROOF.
- ① WIRE ROUTED BELOW FLOOR.

FOR ELECTRICAL TORQUE SPECIFICATIONS SEE DWG NO. 128783-01-000

FOR ELECTRICAL CALLOUTS SEE DWG NO. 121339-01-000

99 M37B
 1B1 USA STANDARDS
 265 CANADIAN HOUSING AND MOTOR VEHICLE STANDARDS

WIRING INSTL-BODY(COAX L)
 SHEET 17 OF 19



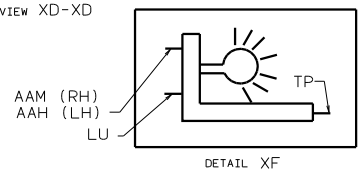
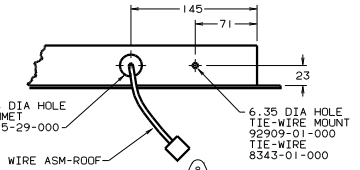
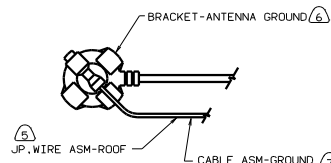
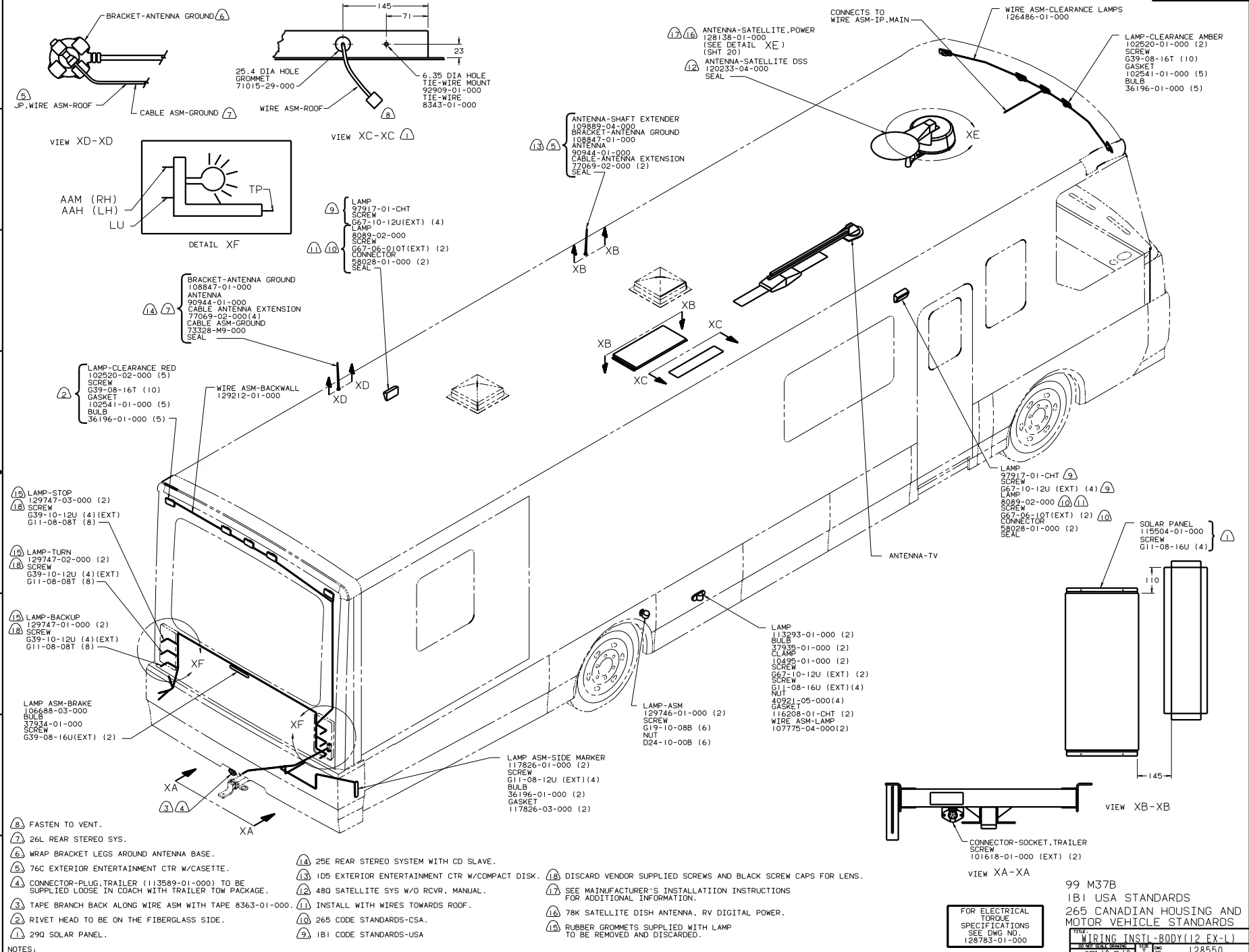
- NOTES:
- ⑧ SEAL ALL MOUNTING HOLES.
 - ⑦ REMOVE KNOCKOUT FOR WIRING.
 - ⑥ INSTALL DUAL ROOF THRU PLATE AND SEAL ALL HOLES BEFORE INSTALLING MOUNTING BASE.
 - ⑤ WIRE ROUTED IN SIDEWALL.
 - ④ ADD RUBBER BUMPER TO ROOF UNDER EACH END OF ANTENNA WHEN IN DOWN POSITION WHICH MAY COME IN CONTACT WITH ROOF.
 - ③ SEE TV INSTALLATION FOR ADDITIONAL INFORMATION.
 - ② WIRE ROUTED IN ROOF.
 - ① WIRE ROUTED BELOW FLOOR.

FOR ELECTRICAL TORQUE SPECIFICATIONS SEE DWG NO. 128783-01-000

99M37B
 1B1 USA STANDARDS
 265 CANADIAN HOUSING AND
 MOTRO VEHICLE STANDARDS

WIRING INSTL-BODY(COAX R)

128550



- (9) LAMP 97917-01-CHT
- SCREW G67-10-12U(EXT) (4)
- LAMP 8089-02-000
- SCREW G67-06-10T(EXT) (2)
- CONNECTOR 88028-01-000 (2)
- SEAL

- (14) (7) BRACKET-ANTENNA GROUND 108847-01-000
- ANTENNA 90944-01-000
- CABLE ANTENNA EXTENSION 77069-02-000(4)
- CABLE ASM-GROUND 73328-W9-000
- SEAL

- (2) LAMP-CLEARANCE RED 102520-02-000 (5)
- SCREW G39-08-16T (10)
- GASKET 102541-01-000 (5)
- BULB 36196-01-000 (5)

- (15) LAMP-STOP 129747-03-000 (2)
- SCREW G39-10-12U (4) (EXT)
- G11-08-08T (8)

- (15) LAMP-TURN 129747-02-000 (2)
- SCREW G39-10-12U (4) (EXT)
- G11-08-08T (8)

- (15) LAMP-BACKUP 129747-01-000 (2)
- SCREW G39-10-12U (4) (EXT)
- G11-08-08T (8)

- LAMP ASM-BRAKE 10689-03-000
- BULB 37934-01-000
- SCREW G39-08-16U(EXT) (2)

- NOTES:
- (8) FASTEN TO VENT.
 - (7) 26L REAR STEREO SYS.
 - (6) WRAP BRACKET LEGS AROUND ANTENNA BASE.
 - (5) 76C EXTERIOR ENTERTAINMENT CTR W/CASSETTE.
 - (4) CONNECTOR-PLUG-TRAILER (113589-01-000) TO BE SUPPLIED LOOSE IN COACH WITH TRAILER TOW PACKAGE.
 - (3) TAPE BRANCH BACK ALONG WIRE ASM WITH TAPE 8363-01-000.
 - (2) RIVET HEAD TO BE ON THE FIBERGLASS SIDE.
 - (1) 290 SOLAR PANEL.

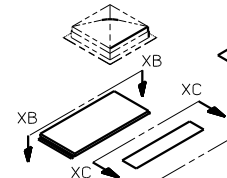
- (13) (5) ANTENNA-SHAFT EXTENDER 109689-04-000
- BRACKET-ANTENNA GROUND 108847-01-000
- ANTENNA 90944-01-000
- CABLE ANTENNA EXTENSION 77069-02-000 (2)
- SEAL

- (17) (16) ANTENNA-SATELLITE, POWER 128138-01-000 (SEE DETAIL XE) (SHT 20)
- (12) ANTENNA-SATELLITE DSS 120233-04-000
- SEAL

- CONNECTS TO WIRE ASM-IP, MAIN
- WIRE ASM-CLEARANCE LAMPS 126486-01-000

- LAMP-CLEARANCE AMBER 102520-01-000 (2)
- SCREW G39-08-16T (10)
- GASKET 102541-01-000 (5)
- BULB 36196-01-000 (5)

- (11) (10) LAMP 97917-01-CHT
- SCREW G67-10-12U(EXT) (4)
- LAMP 8089-02-000
- SCREW G67-06-10T(EXT) (2)
- CONNECTOR 88028-01-000 (2)
- SEAL



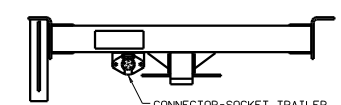
- LAMP 97917-01-CHT (9)
- SCREW G67-10-12U (EXT) (4) (9)
- LAMP 8089-02-000 (10) (11)
- SCREW G67-06-10T(EXT) (2)
- CONNECTOR 88028-01-000 (2)
- SEAL

- (1) SOLAR PANEL 115504-01-000
- SCREW G11-08-16U (4)

- LAMP 113293-01-000 (2)
- BULB 37935-01-000 (2)
- CLAMP 10495-01-000 (2)
- SCREW G67-10-12U (EXT) (2)
- SCREW G11-08-16U (EXT) (4)
- NUT 40921-05-000(4)
- GASKET 116208-01-CHT (2)
- WIRE ASM-LAMP 107775-04-000(2)

- LAMP ASM 129746-01-000 (2)
- BULB 36196-01-000 (2)
- GASKET 117826-03-000 (2)

- LAMP ASM-SIDE MARKER 117826-01-000 (2)
- SCREW G11-08-12U (EXT) (4)
- BULB 36196-01-000 (2)
- GASKET 117826-03-000 (2)



FOR ELECTRICAL TORQUE SPECIFICATIONS SEE DWG NO. 128783-01-000

99 M37B
181 USA STANDARDS
265 CANADIAN HOUSING AND MOTOR VEHICLE STANDARDS

WIRING INSTL - BODY (12 EX-1)

128550