



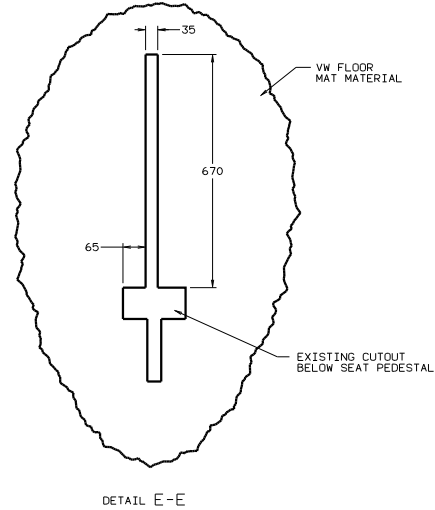
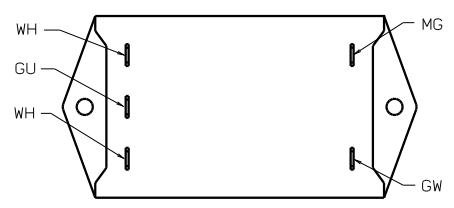
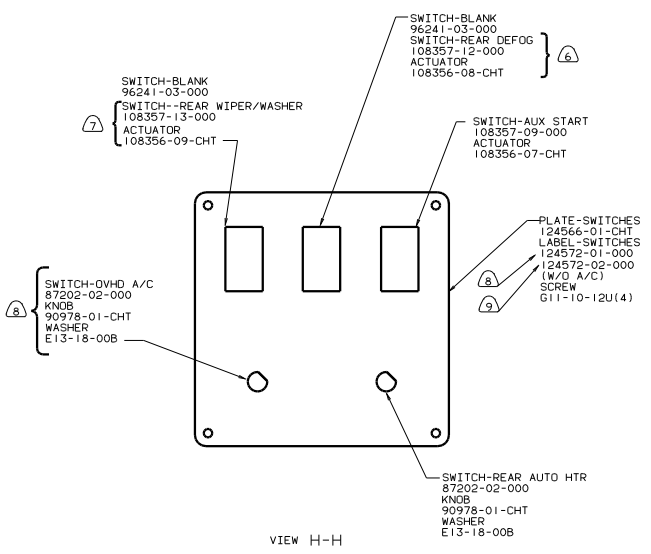
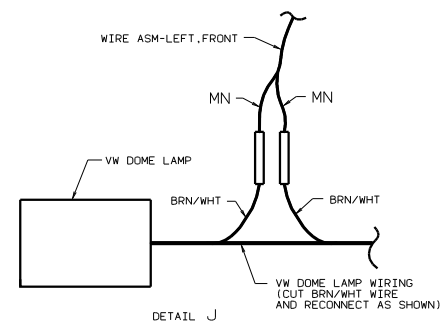
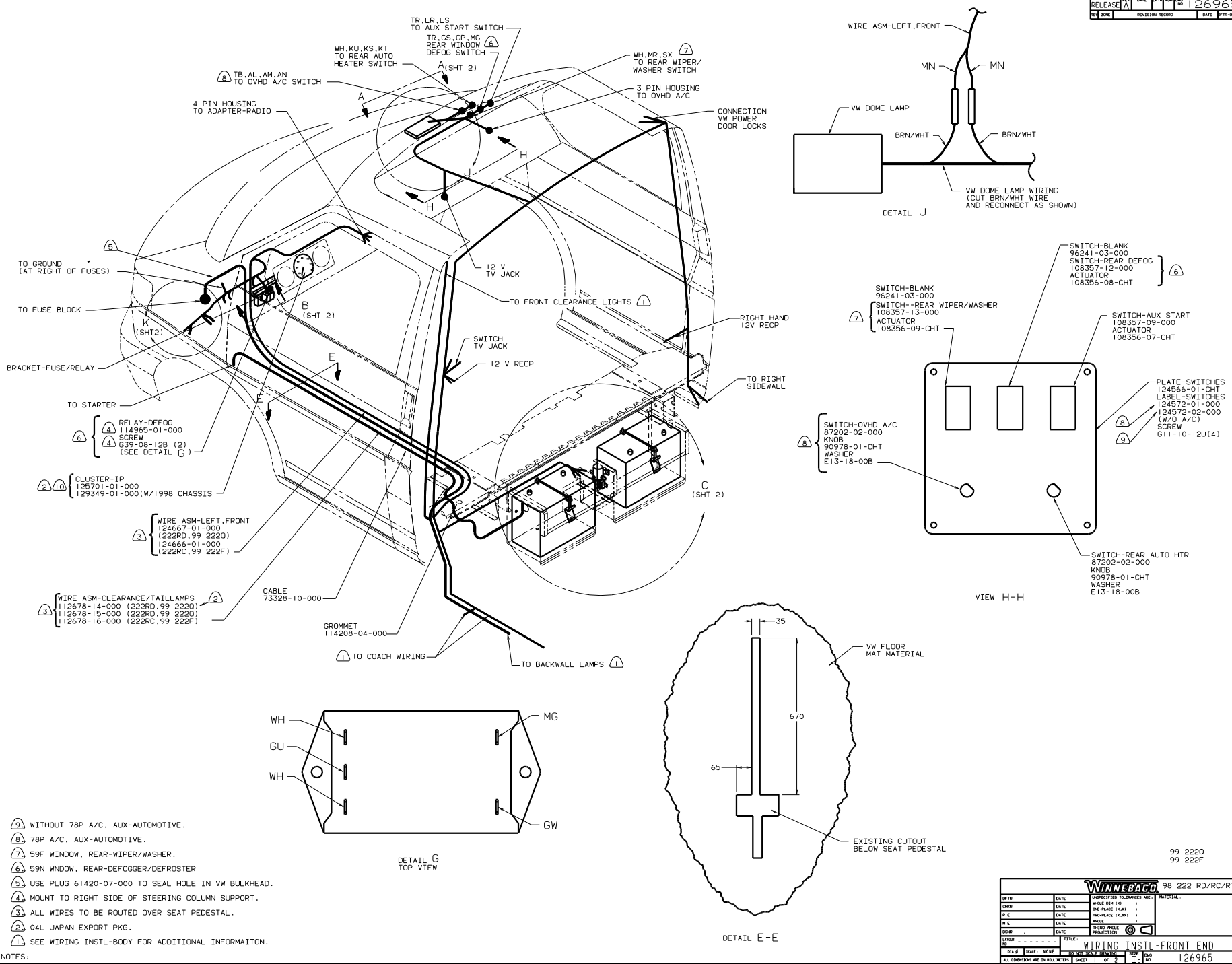
DANGER

Danger of electrical shock, burns or death. Always remove all power sources before attempting any repair, service or diagnostic work. Power can be present from shore power, generator, inverter or battery. All power sources must be disabled and secured before performing any service.



CAUTION

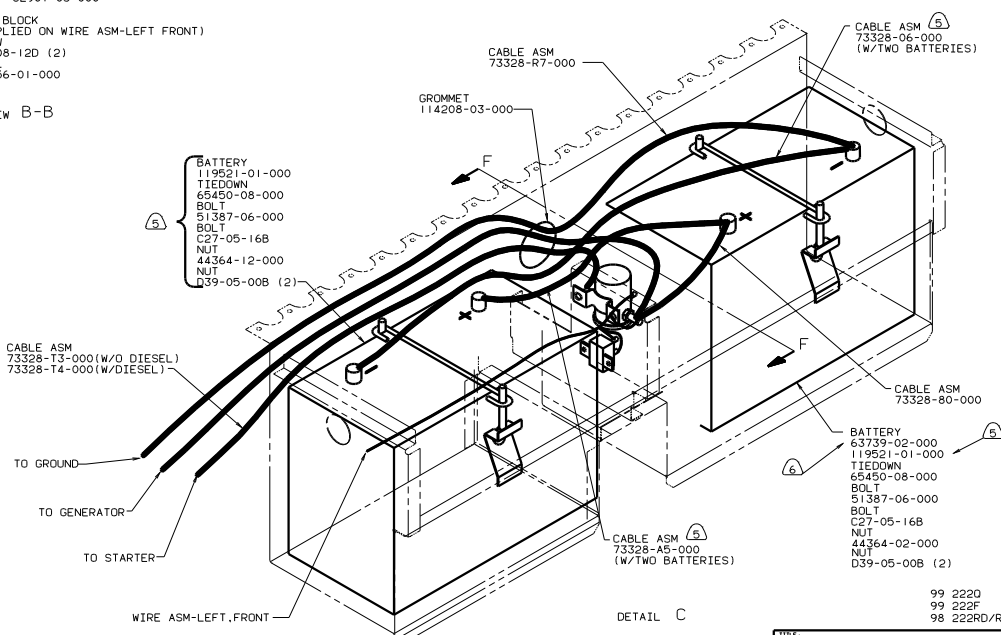
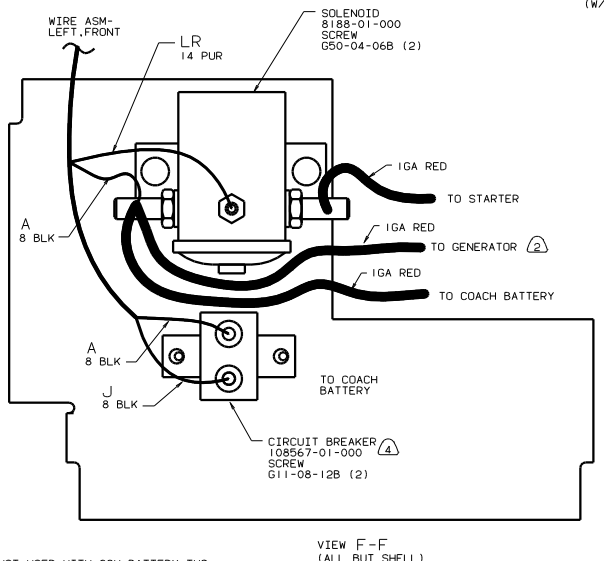
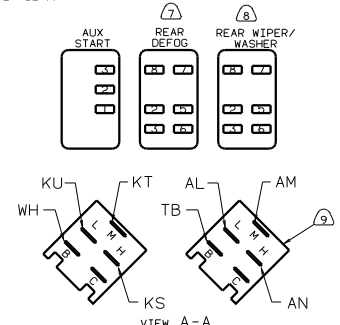
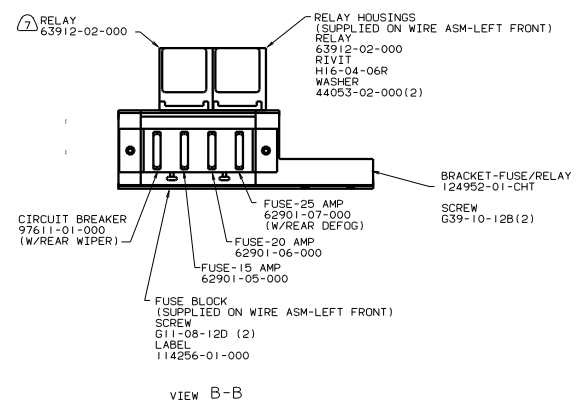
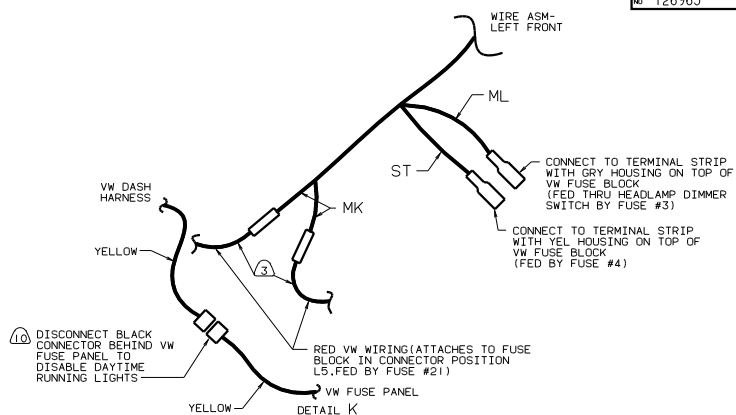
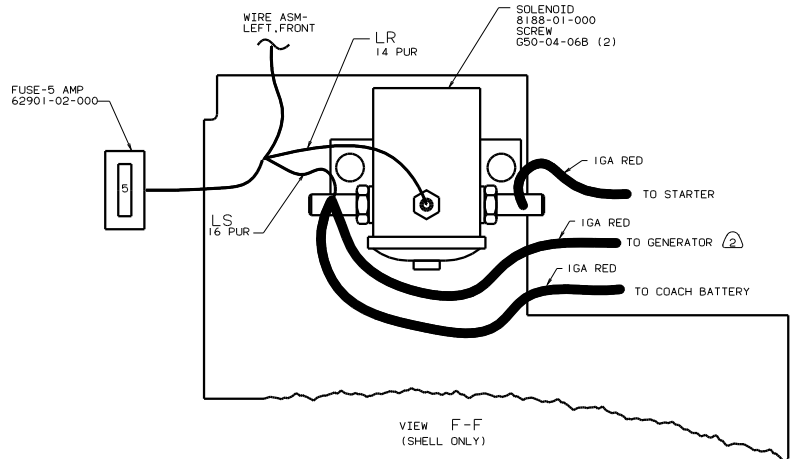
If you lack the skills, tools or equipment to perform diagnostic or repair work leave such work to an authorized Winnebago Industries dealer or other qualified shop.



- (9) WITHOUT 78P A/C. AUX-AUTOMOTIVE.
- (8) 78P A/C. AUX-AUTOMOTIVE.
- (7) 59F WINDOW. REAR-WIPER/WASHER.
- (6) 59N WINDOW. REAR-DEFOGGER/DEFROSTER
- (5) USE PLUG 61420-07-000 TO SEAL HOLE IN VW BULKHEAD.
- (4) MOUNT TO RIGHT SIDE OF STEERING COLUMN SUPPORT.
- (3) ALL WIRES TO BE ROUTED OVER SEAT PEDESTAL.
- (2) 04L JAPAN EXPORT PKG.
- (1) SEE WIRING INSTL-BODY FOR ADDITIONAL INFROMAITON.

99 2220
99 222F

OF IN		DATE	UNSPECIFIED TOLERANCES ARE:	MATERIAL
CHP	DATE	WHOLE OR 1/16"	±	
DR	DATE	ONE-PLACE (1/32)	±	
DF	DATE	TWO-PLACE (1/64)	±	
COM	DATE	THREE-PLACE (1/128)	±	
DATE	DATE	FOUR-PLACE (1/256)	±	
WINNEBAGO 98 222 RD/RC/RT WIRING INSTL-FRONT END SHEET 1 OF 2 REF: 124670-D 1 126965				



- (6) NOT USED WITH 22W BATTERY-TWO.
 (5) 22W BATTERY-TWO.
 (4) SEAL SEAMS AND TOP OF CIRCUIT BREAKER WITH SEALANT 117082-01-000. MINIMIZE CONTACT OF SEALANT WITH ELECTRICALLY CONDUCTIVE SURFACES.
 (3) CUT WIRE AND RECONNECT AS SHOWN.
 (2) SEE GENERATOR INSTL FOR ADDITIONAL INFORMATON.
 (1) SEE WIRING INSTL-BODY FOR ADDITIONAL INFORMATON.
- (10) 04L JAPAN EXPORT PKG.
 (9) 78P A/C. AUX-UTOMOTIVE.
 (8) 59F WINDOW. REAR-WIPER/WASHER.
 (7) 59N WINDOW. REAR-DEFOGGER/DEFROSTER