

- RETAINER 81828-01-CHT
- 83699-15-CHT(2)
- 83699-16-CHT
- 83699-19-CHT(3)
- SINK-SST, DOUBLE 110654-01-000(US/CAN)
- STRAINER 92303-01-000(2)
- SEAL 91255-02-000 (A/R)
- RETAINER 105497-02-000(6)
- SCREW G67-06-10U(22)
- WASHER-RUBBER 127440-02-CHT(2)

- SINK 105921-01-CHT
- SPACER 105218-01-CHT
- STRAINER 106116-01-CHT
- SEAL 91255-02-000 (A/R)

- CLAMP-HOSE 62401-05-000
- BRACKET-PIPE 95061-01-000(2)

- SHOWER INSTL-ENCLOSURE 127290-01-000
- DRAIN 120981-01-CHT
- 69610-01-000
- WASHER 127440-02-CHT
- TAILPIECE 11069-02-000
- NUT 130403-01-000

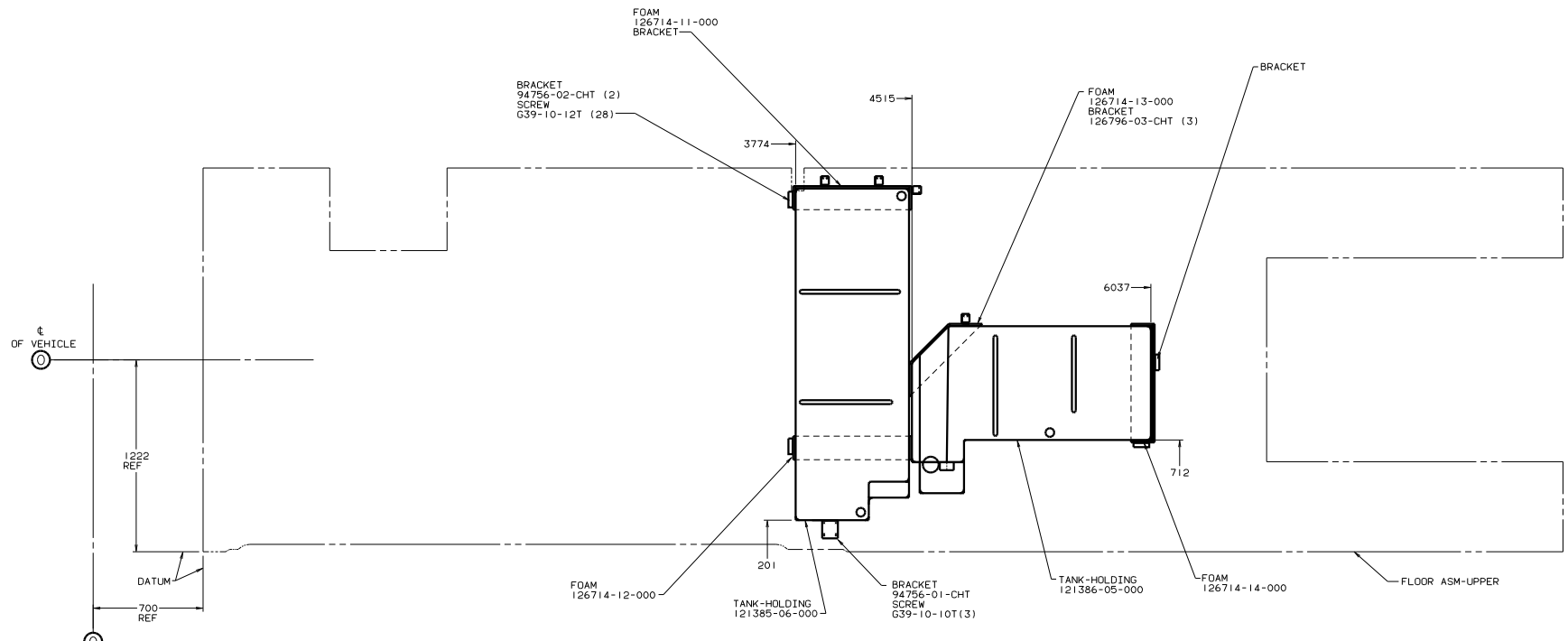
- NOTES:
1. SLOPE OF HORIZONTAL PIPING TO BE 6 PER 305 MIN.
 2. SLOPE OF TRAP ARM MUST BE 6 PER 305.
 3. ALL PIPE AND FITTINGS TO BE ASSEMBLED WITH SOLVENT 4020-01-000.
 4. ALL EXTERIOR OPENINGS AROUND PIPE TO BE SEALED WITH 11074-01-000.
 5. EXPOSED PIPE ABOVE ROOF TO BE PAINTED WITH 37163-01-000.
 6. FOR CANADIAN UNITS EACH HOLDING TANK SHALL HAVE A CSA APPROVAL STAMPED NEAR THE TAMPO APPROVAL.
 7. SEAL ALL AROUND SHOWER WITH SILICONE.
 8. SEE DWG 61607-01-000 FOR INSTL OF GROMMETS.
 9. VENT PIPE MUST PROJECT 51 MIN AND 63.5 MAX ABOVE ROOF FOR PROPER FIT AND FUNCTION.
 10. SECURE VENT TUBES TO FLOOR WITH BRACKET.
 11. US ONLY.
 12. CSA ONLY.
 13. TRIM TO FIT.
 14. CLAMP TO CABINET (2 PLACES).
 15. BRACKET ON PLATFORM ASM MAY NEED TO BE REPOSITIONED.

- (18) SECURE PIPES TO CABINET USING WIRE TIE 108046-02-000 AND SCREW G67-10-12U(8).
- (17) COVER PIPE FROM ELBOW UP USING SCRAP 9CARPT-02-000 WHEN AVAILABLE OR 9CARPT-02-000 (150 X 178).
- (16) OPTION 41K.

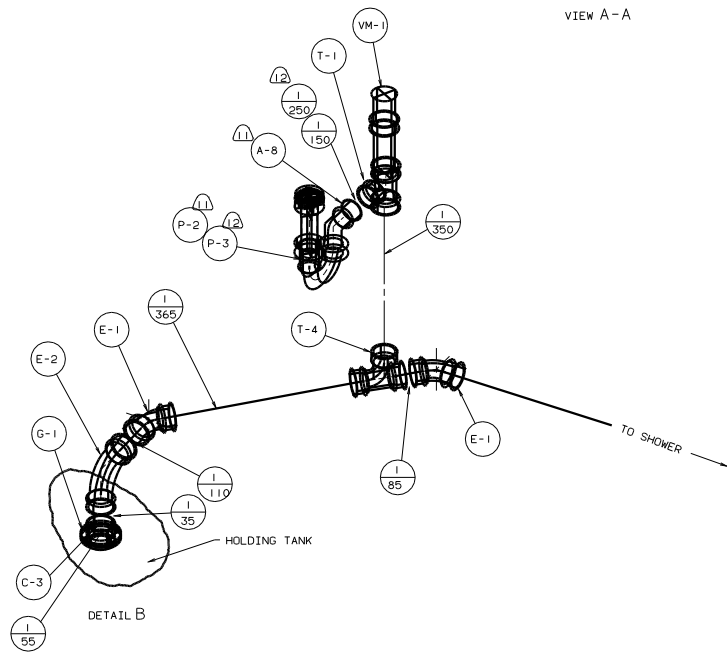
X-X FOR DRAINAGE CALLOUTS SEE DWG NO. 16229-01-000

DATE		BY		TITLE	
DATE	DATE	DESIGNED	DATE	PROJECT NO.	125998
DATE	DATE	DRAWN	DATE	SHEET	1 OF 2
DATE	DATE	CHECKED	DATE	SCALE	AS SHOWN
DATE	DATE	APPROVED	DATE	BY	

WINNEBAGO 98 L36W08, PUSHER
 LAYER K136W08
 DRAINAGE SYSTEM INSTL



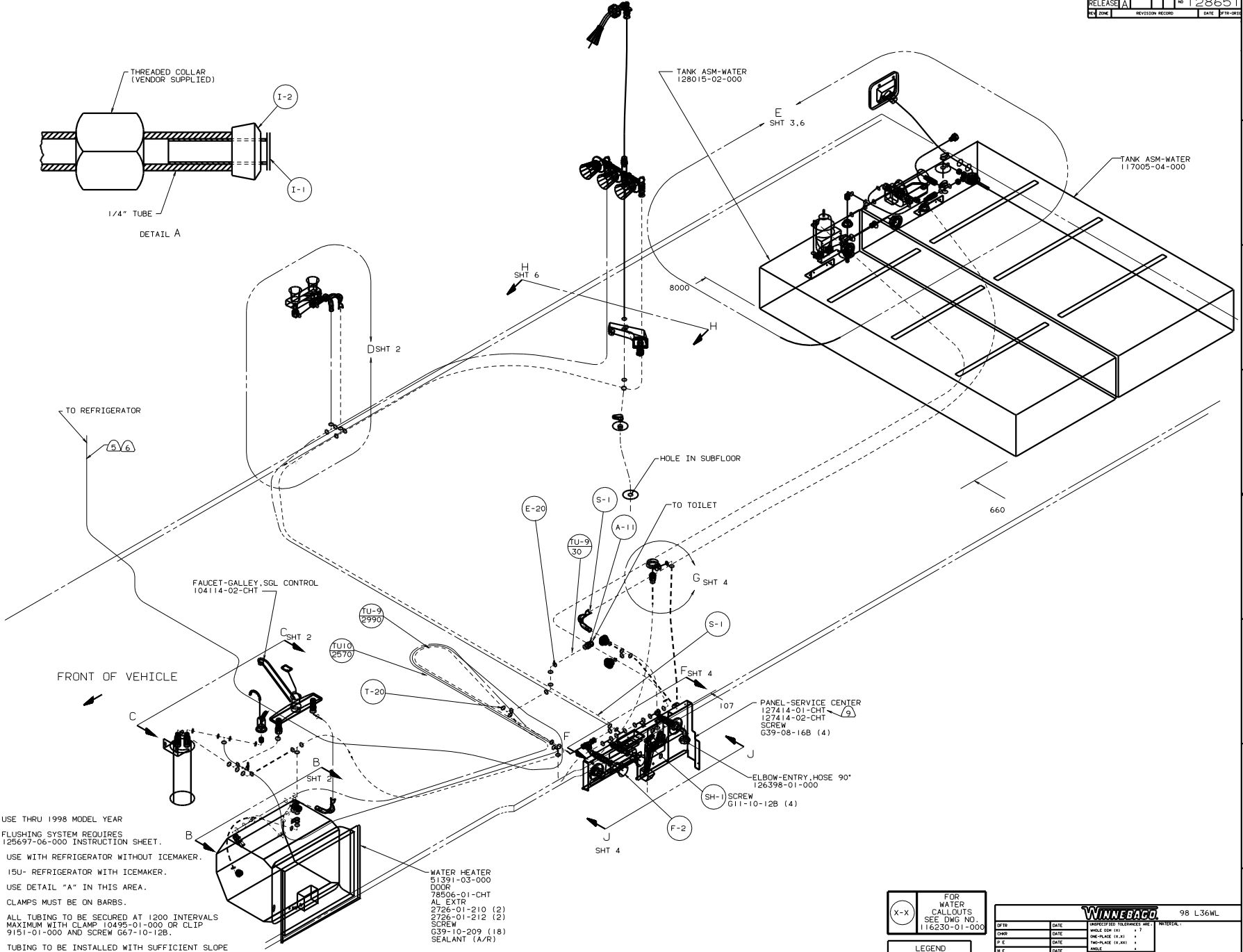
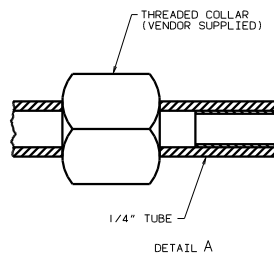
VIEW A-A



DETAIL B

98 L36WQ, PUSHER

TITLE: DRAINAGE SYSTEM INSUL		DWG NO: 125998	
DATE: 2005	BY: J.E.	CHK: J.E.	APP: J.E.
SHEET 2 OF 2		PAGE 1	



- 9 USE THRU 1998 MODEL YEAR
- 8 FLUSHING SYSTEM REQUIRES 125697-06-000 INSTRUCTION SHEET.
- 7 USE WITH REFRIGERATOR WITHOUT ICEMAKER.
- 6 15U- REFRIGERATOR WITH ICEMAKER.
- 5 USE DETAIL "A" IN THIS AREA.
- 4 CLAMPS MUST BE ON BARBS.
3. ALL TUBING TO BE SECURED AT 1200 INTERVALS MAXIMUM WITH CLAMP 10495-01-000 OR CLIP 9151-01-000 AND SCREW G67-10-12B.
2. TUBING TO BE INSTALLED WITH SUFFICIENT SLOPE TO PROVIDE DRAINAGE TO NEAREST VALVE.
1. PLASTIC FITTINGS TO BE SEALED WITH SEALANT 84456-01-000.

FOR WATER CALLOUTS SEE DWG NO. 116230-01-000

LEGEND

HOT

COLD

WINNEBAGO 98 L36WL

DATE	UNAPPROVED TOLERANCES ARE:	MATERIAL:
DATE	WHOLE DIM (IN) .1	
DATE	ONE-PLACE (IN) .01	
DATE	TWO-PLACE (IN) .001	
DATE	THIRD PLACE (IN) .0005	
DATE	FOURTH PLACE (IN) .0001	

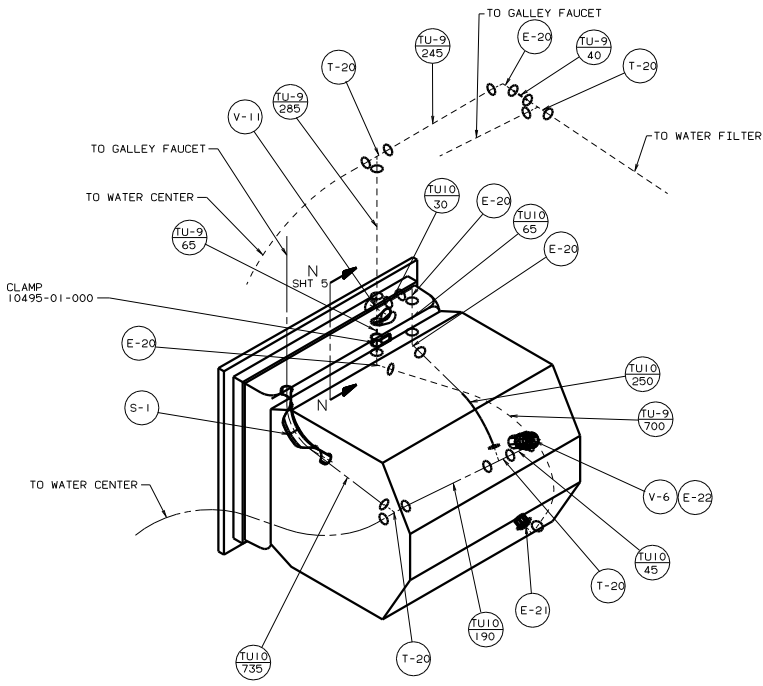
L36W0

SCALE: NONE

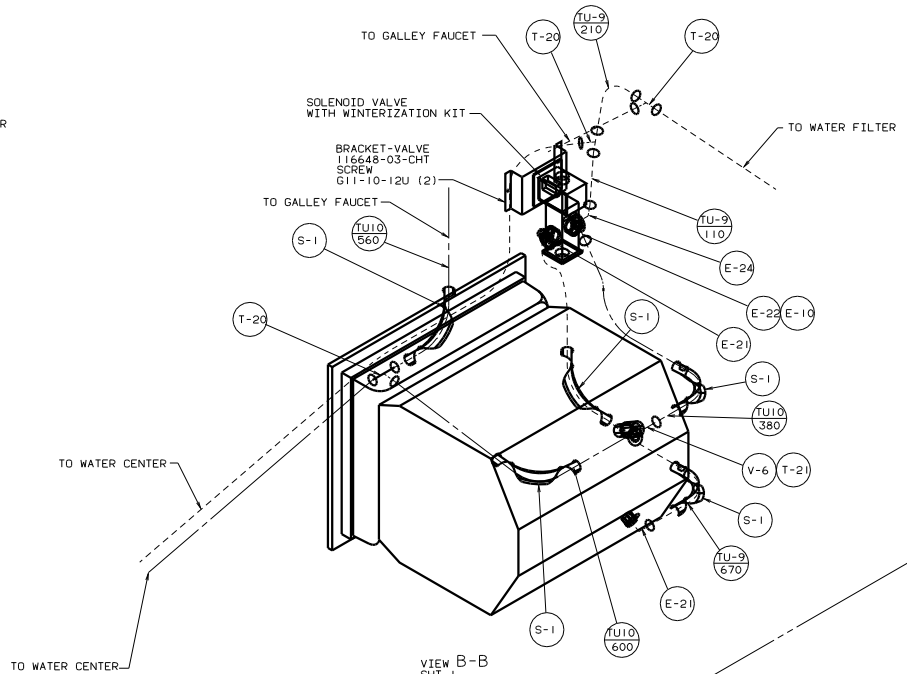
WATER SYSTEM INSTL

SHEET 1 OF 6

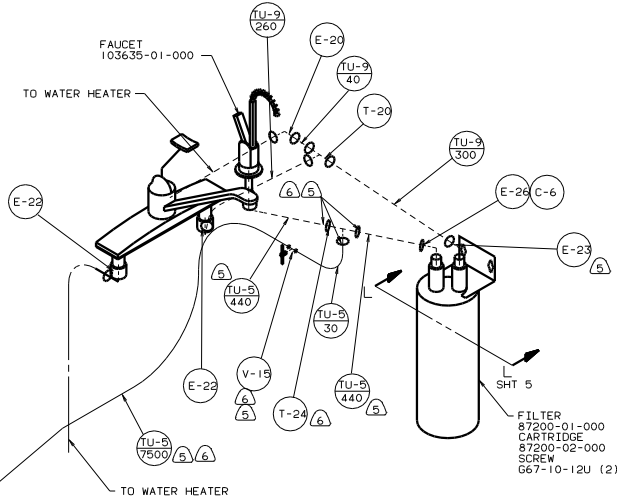
128651



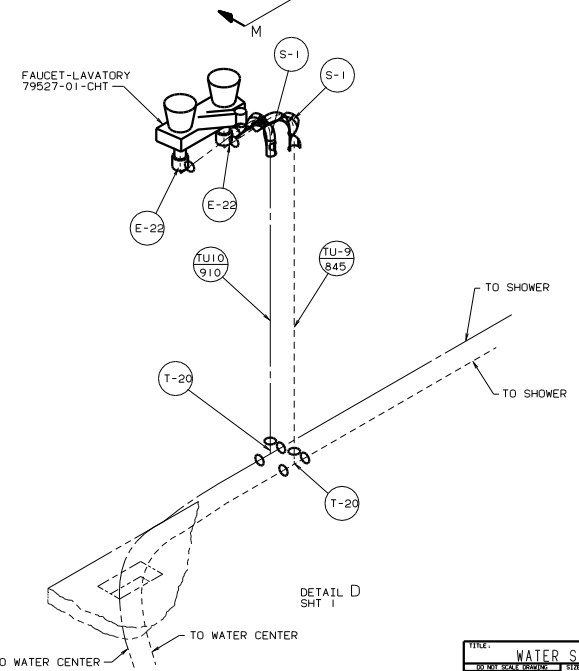
VIEW B-B
SHT 1
53J-WATER HEATER BYPASS VALVE



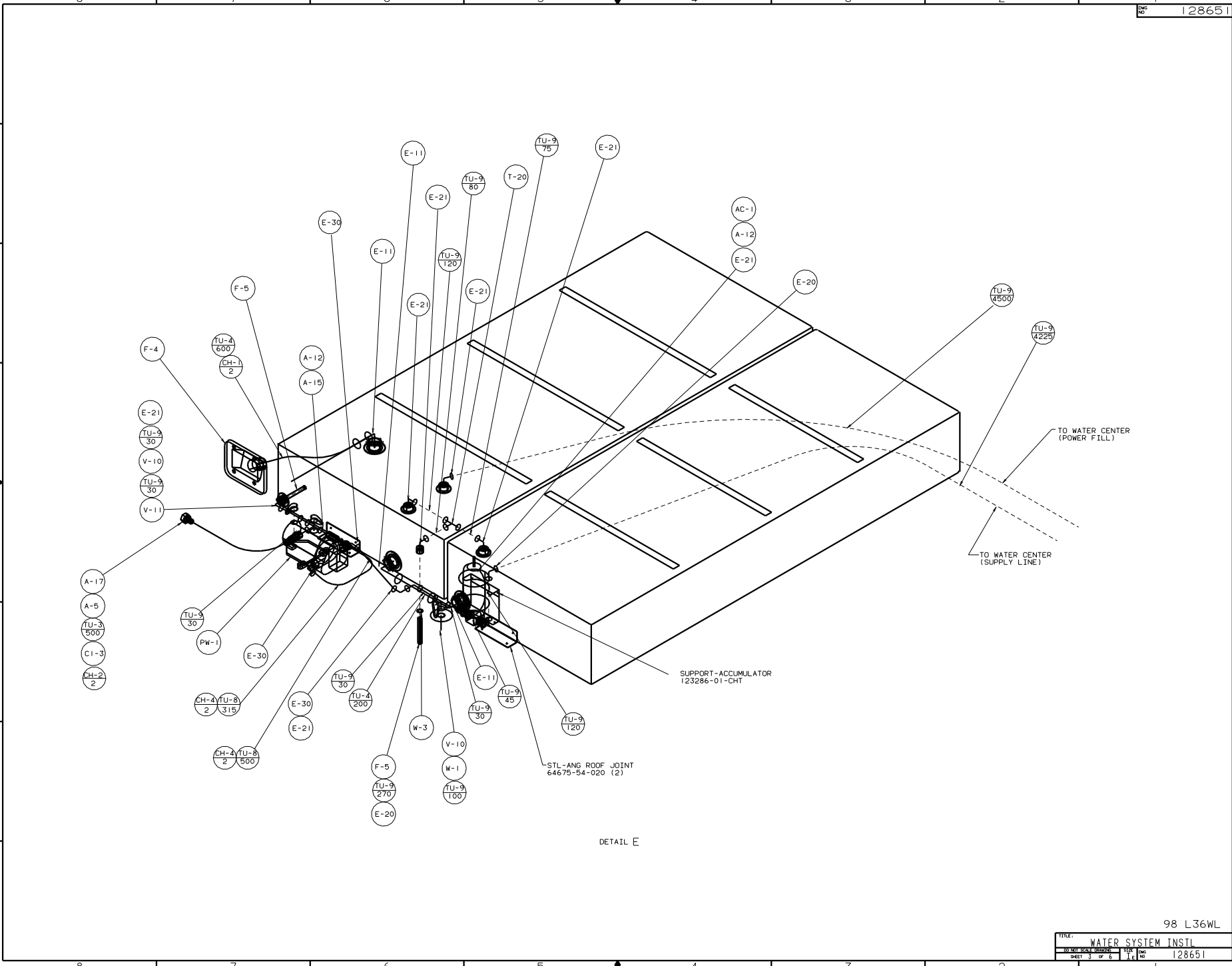
VIEW B-B
SHT 1
53O-WATER HEATER AUTOMATIC WINTER



VIEW C-C
SHT 1
29B-WATER PURIFIER



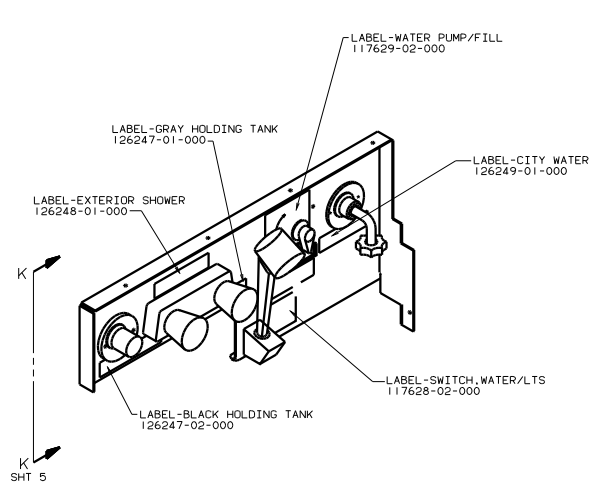
DETAIL D
SHT 1



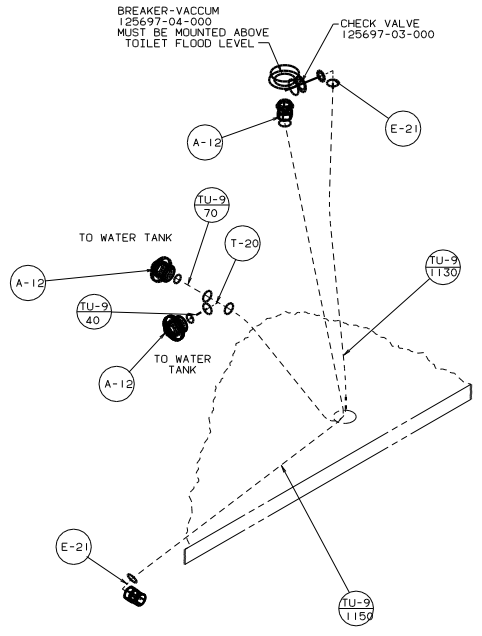
DETAIL E

98 L36WL

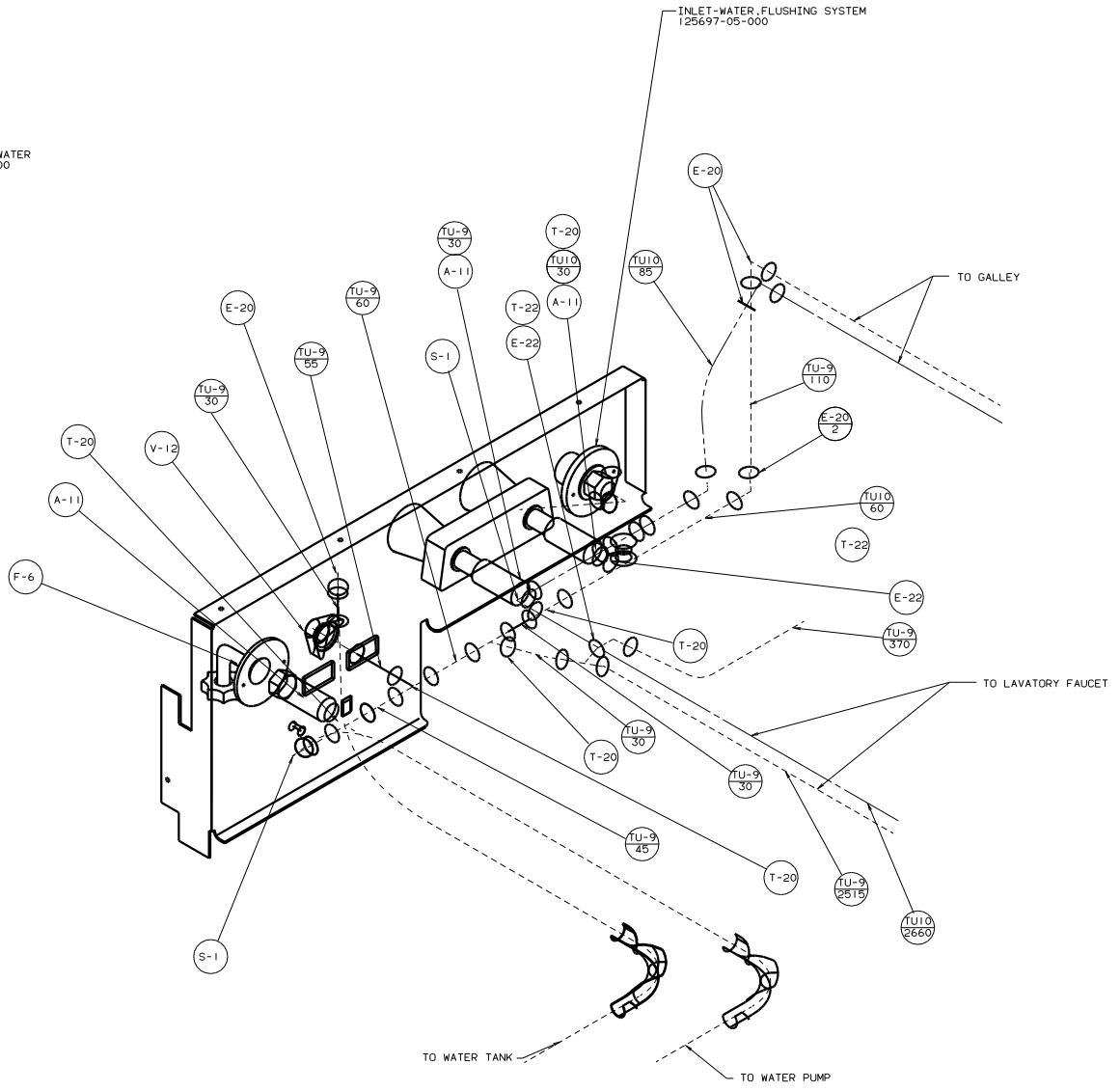
TITLE: WATER SYSTEM INSTL	
NO. OF SHEETS: 6	FIG. NO. 1
SHEET 3 OF 6	128651



VIEW J-J
SHT 1

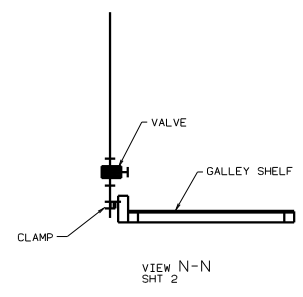
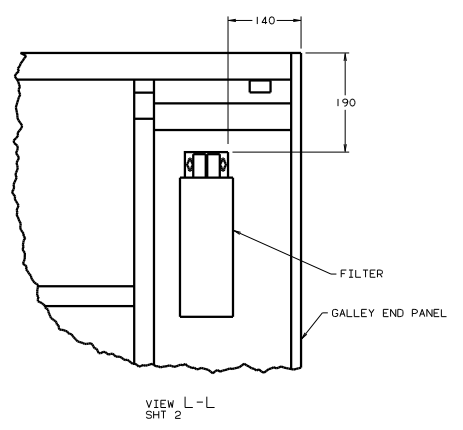
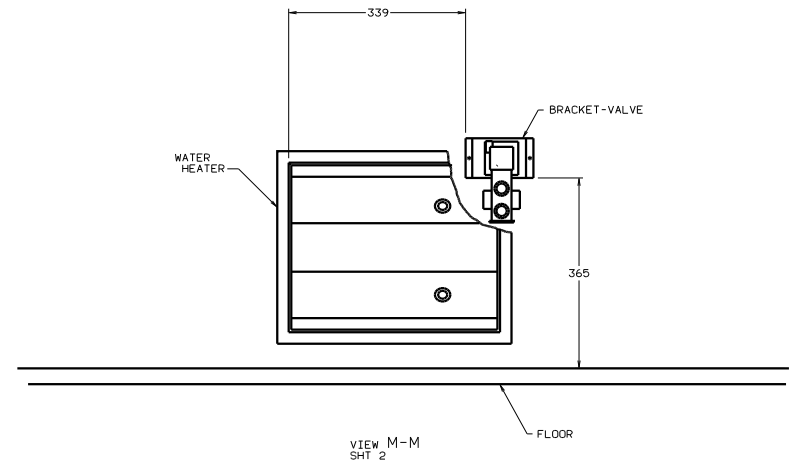
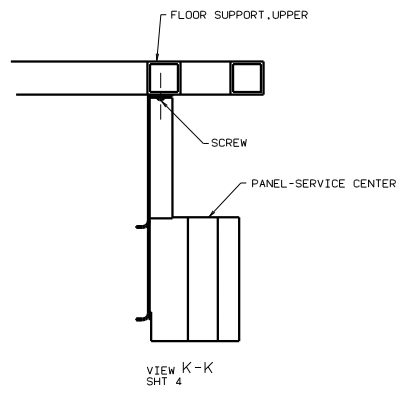


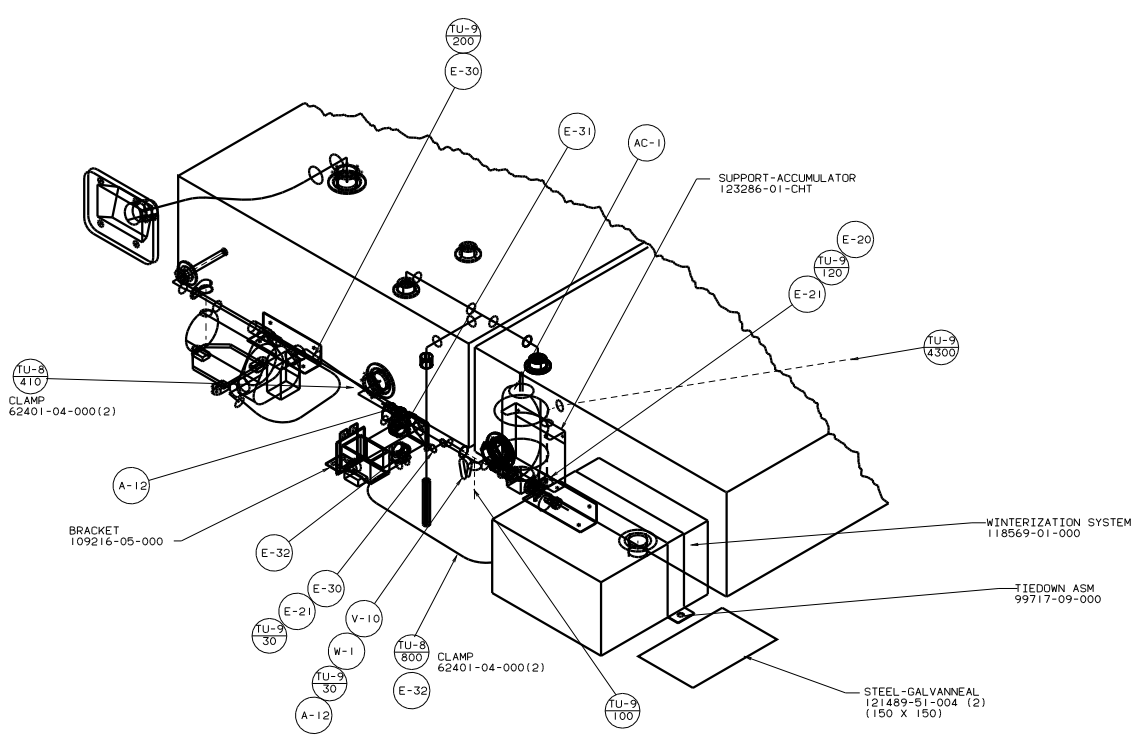
DETAIL G
SHT 1
FLUSHING SYSTEM



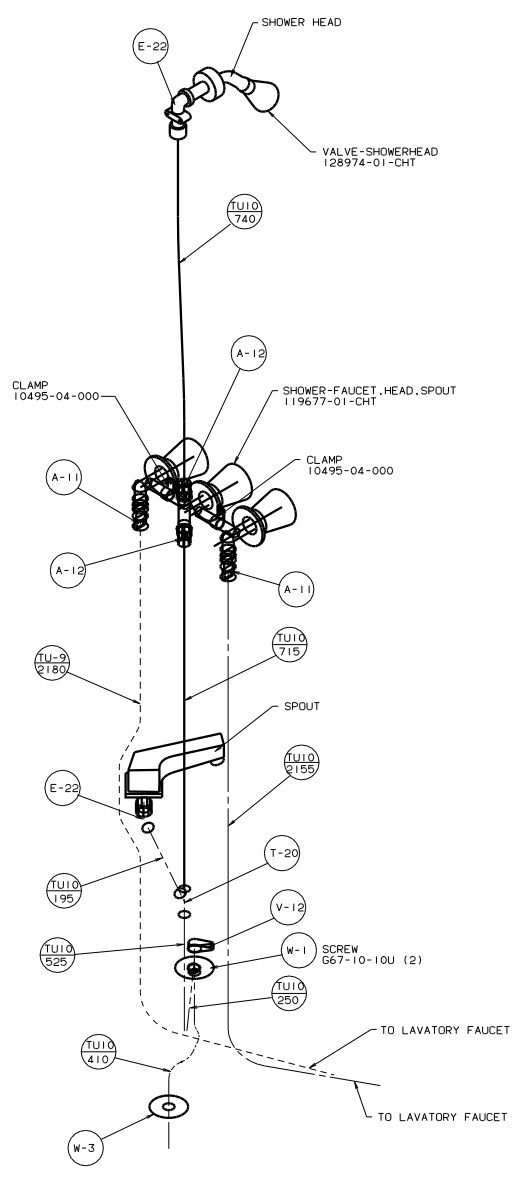
VIEW F-F
SHT 1

TITLE: WATER SYSTEM INSTL	
NO. OF SHEETS: 6	SHEET NO. 4
DATE: 11/01/05	DESIGNER: J.E.
128651	





DETAIL E
530-WINTERIZING KIT



VIEW H-H
SHT 1