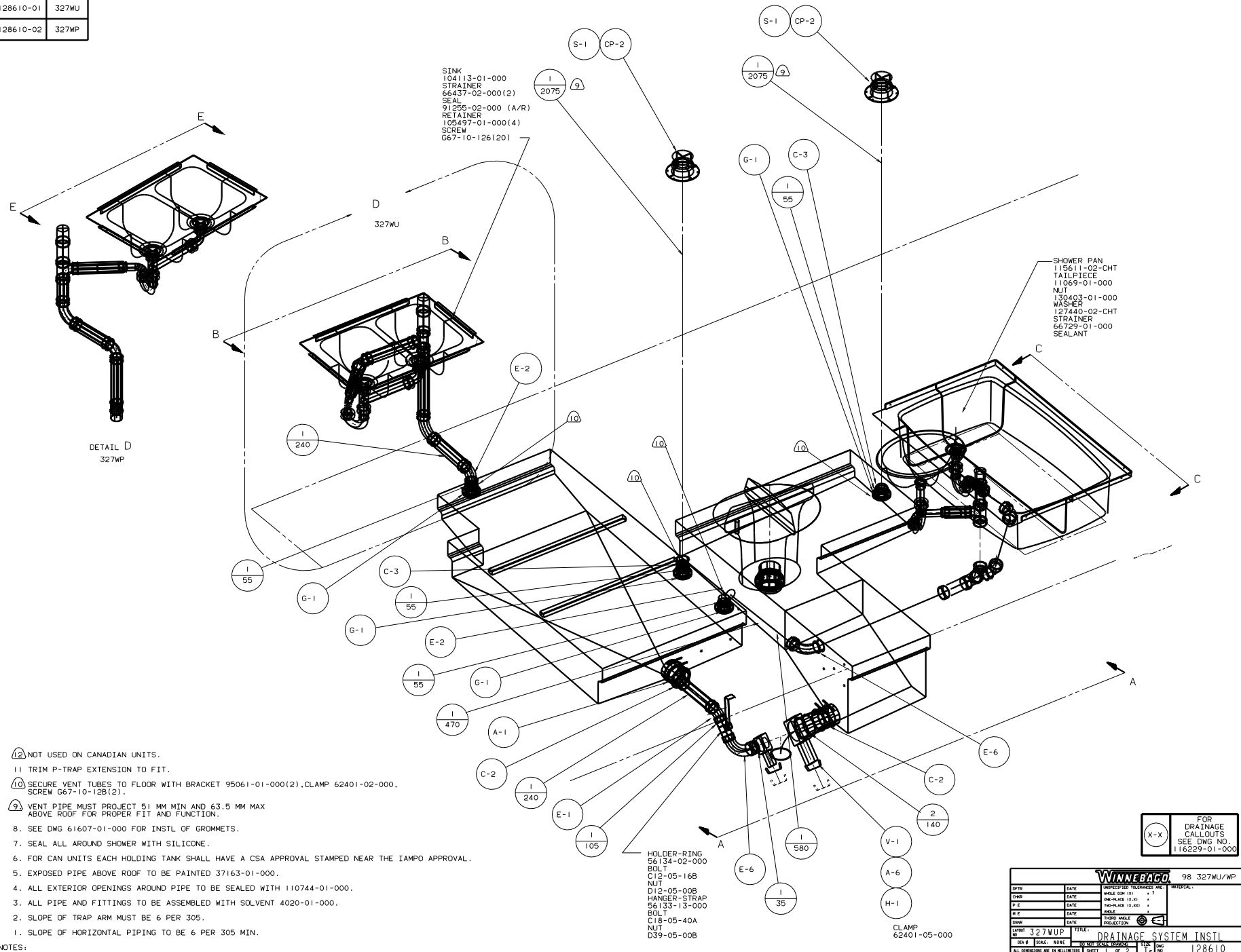


DWG NO	MODEL
128610-01	327WU
128610-02	327WP



- SINK  
 104113-01-000  
 STRAINER  
 66437-02-000(2)  
 SEAL  
 91255-02-000 (A/R)  
 RETAINER  
 105497-01-000(4)  
 SCREW  
 G67-10-126(20)

- SHOWER PAN  
 115611-02-CHT  
 TAILPIECE  
 11069-01-000  
 NUT  
 130403-01-000  
 WASHER  
 127440-02-CHT  
 STRAINER  
 66729-01-000  
 SEALANT

DETAIL D  
 327WP

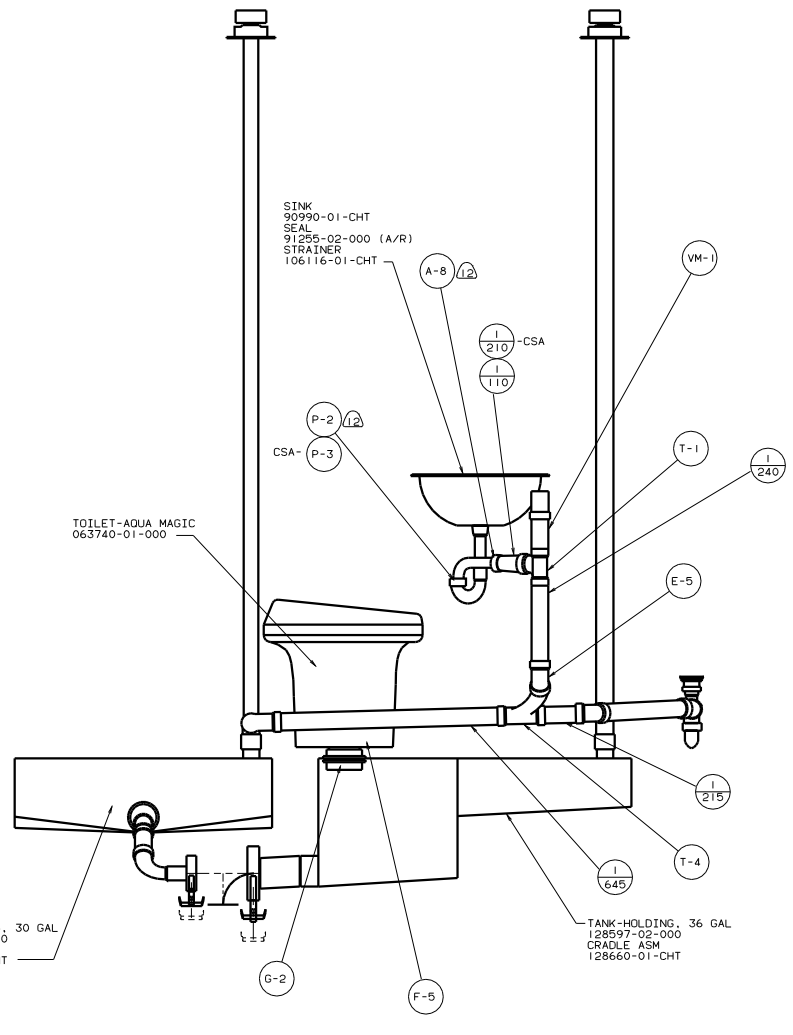
- (2) NOT USED ON CANADIAN UNITS.  
 11 TRIM P-TRAP EXTENSION TO FIT.  
 (10) SECURE VENT TUBES TO FLOOR WITH BRACKET 95061-01-000(2), CLAMP 62401-02-000, SCREW G67-10-126(2).  
 (9) VENT PIPE MUST PROJECT 51 MM MIN AND 63.5 MM MAX ABOVE ROOF FOR PROPER FIT AND FUNCTION.  
 8. SEE DWG 61607-01-000 FOR INSTL OF GROMMETS.  
 7. SEAL ALL AROUND SHOWER WITH SILICONE.  
 6. FOR CAN UNITS EACH HOLDING TANK SHALL HAVE A CSA APPROVAL STAMPED NEAR THE IAMPO APPROVAL.  
 5. EXPOSED PIPE ABOVE ROOF TO BE PAINTED 37163-01-000.  
 4. ALL EXTERIOR OPENINGS AROUND PIPE TO BE SEALED WITH 110744-01-000.  
 3. ALL PIPE AND FITTINGS TO BE ASSEMBLED WITH SOLVENT 4020-01-000.  
 2. SLOPE OF TRAP ARM MUST BE 6 PER 305.  
 1. SLOPE OF HORIZONTAL PIPING TO BE 6 PER 305 MIN.

- HOLDER-RING  
 56134-02-000  
 BOLT  
 C12-05-16B  
 NUT  
 D12-05-00B  
 HANGER-STRAP  
 56133-13-000  
 BOLT  
 C18-05-40A  
 NUT  
 D39-05-00B

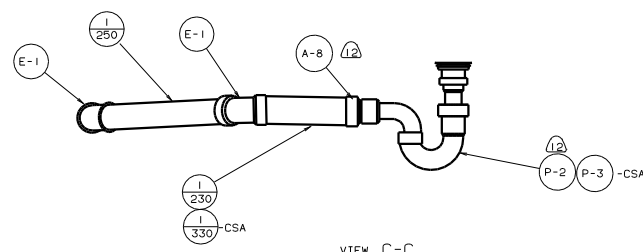
CLAMP  
 62401-05-000

(X-X)  
 FOR DRAINAGE CALLOUTS SEE DWG NO. 116229-01-000

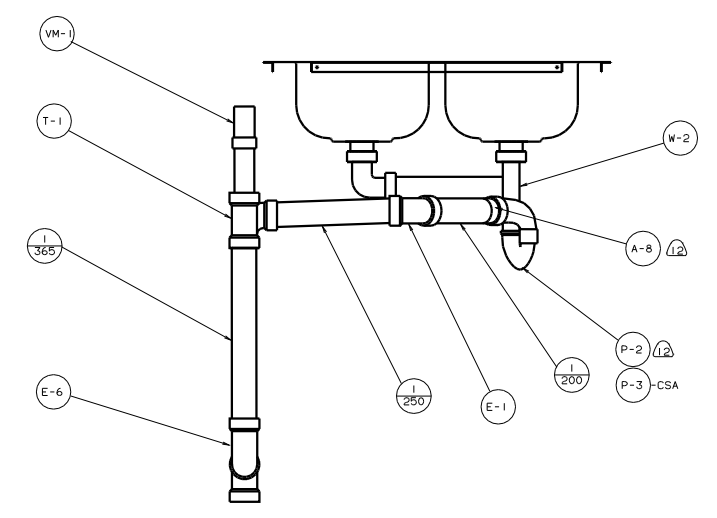
WINNEBAGO		98 327WU/WP
DATE	PROPOSED TOLERANCES ARE:	MATERIAL:
DWG	WHOLE (Ø) .125	
P.E.	FRACTIONAL (Ø) .005	
DATE	THIRD ANGLE	
P.L.C.	PROJECTION	
DATE		
DWG		
LAMP 327WUP	TITLE	
NO. 1	DRAINAGE SYSTEM INSTL	
SCALE: NONE	SHEET 1 OF 2	NO. 128610
ALL DIMENSIONS ARE IN MILLIMETERS		



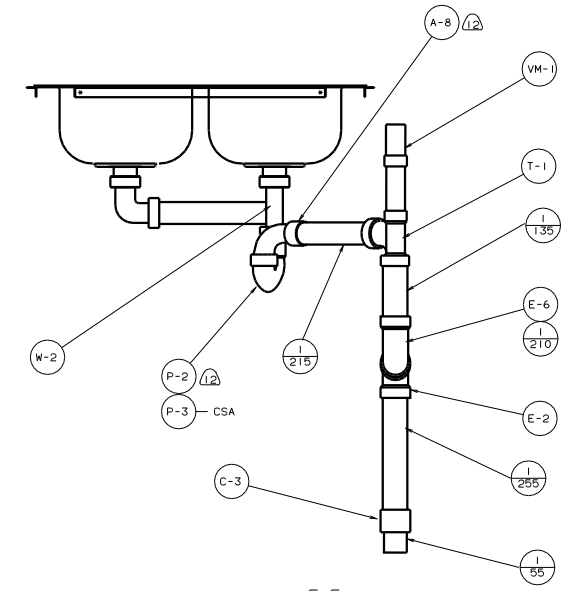
VIEW A-A



VIEW C-C

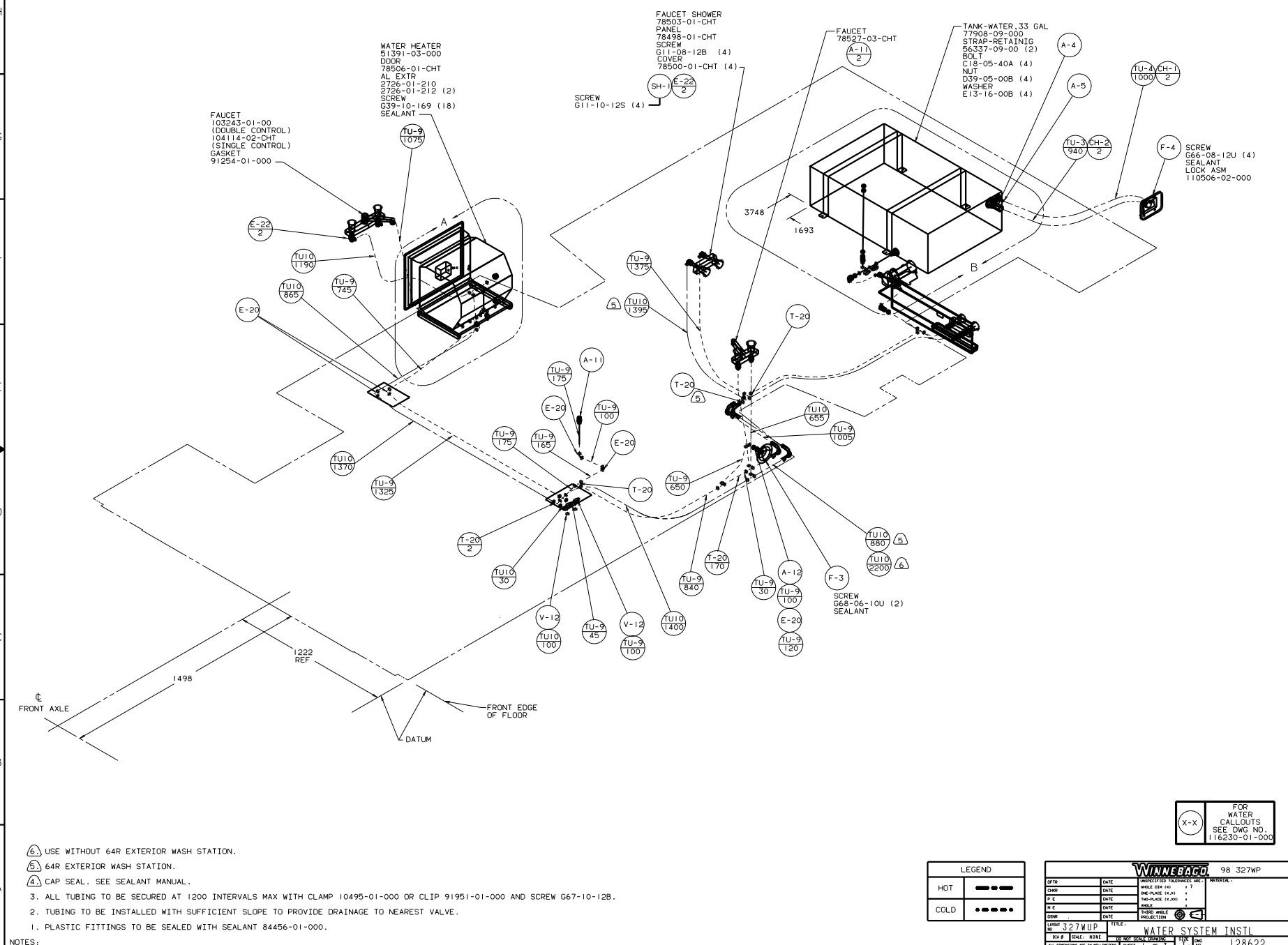


VIEW B-B  
327WU



VIEW E-E  
327WP

98 327WU/WP	
TITLE: DRAINAGE SYSTEM INSTL	
30 MIN SCALE DRAWING	DATE: 11/01/05
SHEET 2 OF 2	FIG. NO. 128610



- (A) USE WITHOUT 64R EXTERIOR WASH STATION.  
 (B) 64R EXTERIOR WASH STATION.  
 (C) CAP SEAL. SEE SEALANT MANUAL.  
 3. ALL TUBING TO BE SECURED AT 1200 INTERVALS MAX WITH CLAMP 10495-01-000 OR CLIP 91951-01-000 AND SCREW G67-10-12B.  
 2. TUBING TO BE INSTALLED WITH SUFFICIENT SLOPE TO PROVIDE DRAINAGE TO NEAREST VALVE.  
 1. PLASTIC FITTINGS TO BE SEALED WITH SEALANT 84456-01-000.

NOTES:

FAUCET SHOWER  
 78503-01-CHT  
 PANEL  
 78498-01-CHT  
 SCREW  
 G11-08-12B (4)  
 COVER  
 78500-01-CHT (4)  
 SH- E-22  
 2

FAUCET  
 103243-01-00  
 (DOUBLE CONTROL)  
 104114-02-CHT  
 (SINGLE CONTROL)  
 GASKET  
 91254-01-000

WATER HEATER  
 51391-03-000  
 DOOR  
 78506-01-CHT  
 AL EXTR  
 2726-01-210  
 2726-01-212 (2)  
 SCREW  
 G39-10-169 (18)  
 SEALANT

FAUCET  
 78527-03-CHT  
 A-1  
 2

TANK-WATER, 33 GAL  
 77908-09-000  
 STRAP-RETAINING  
 56337-09-00 (2)  
 BOLT  
 C18-05-40A (4)  
 NUT  
 D39-05-00B (4)  
 WASHER  
 E13-16-00B (4)

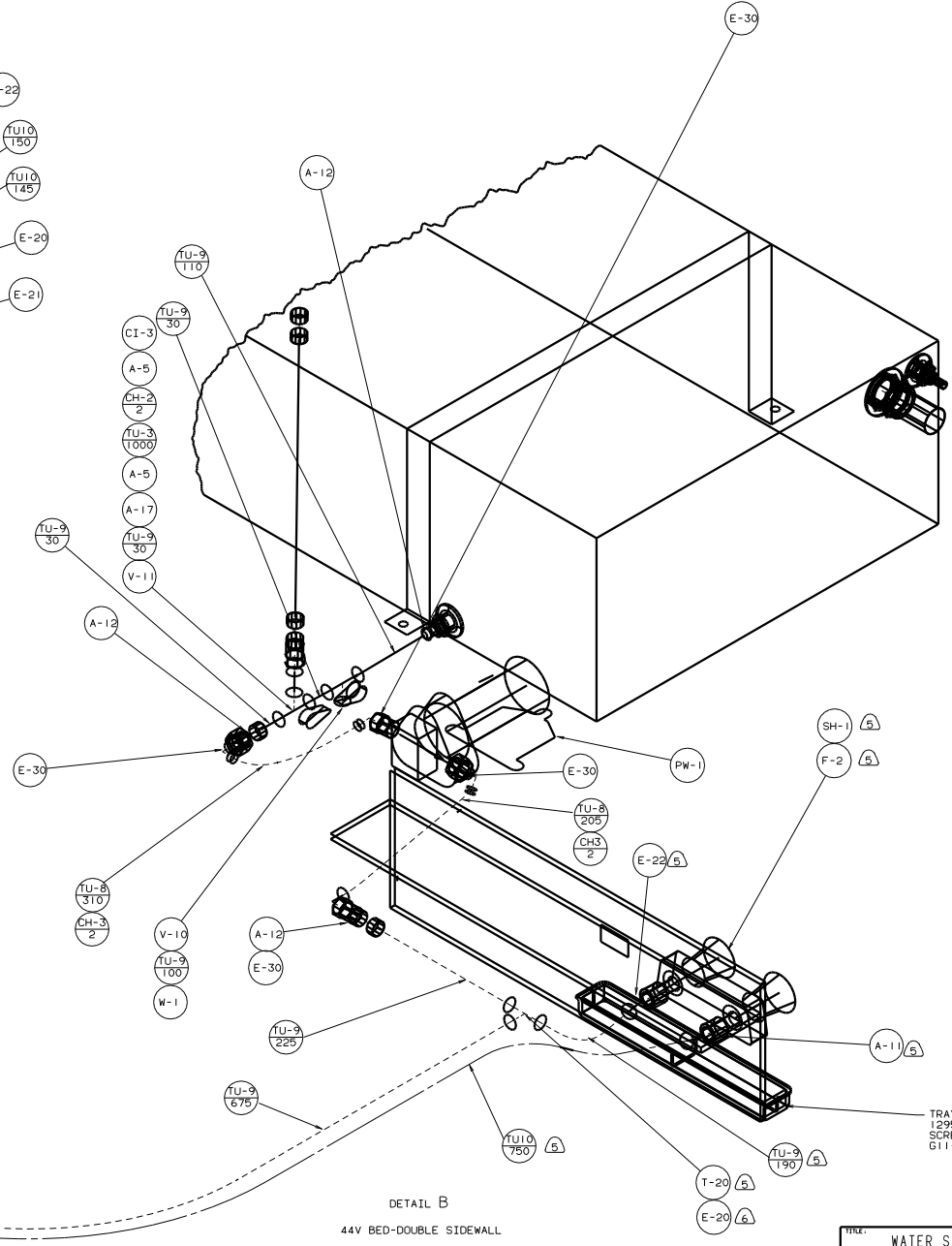
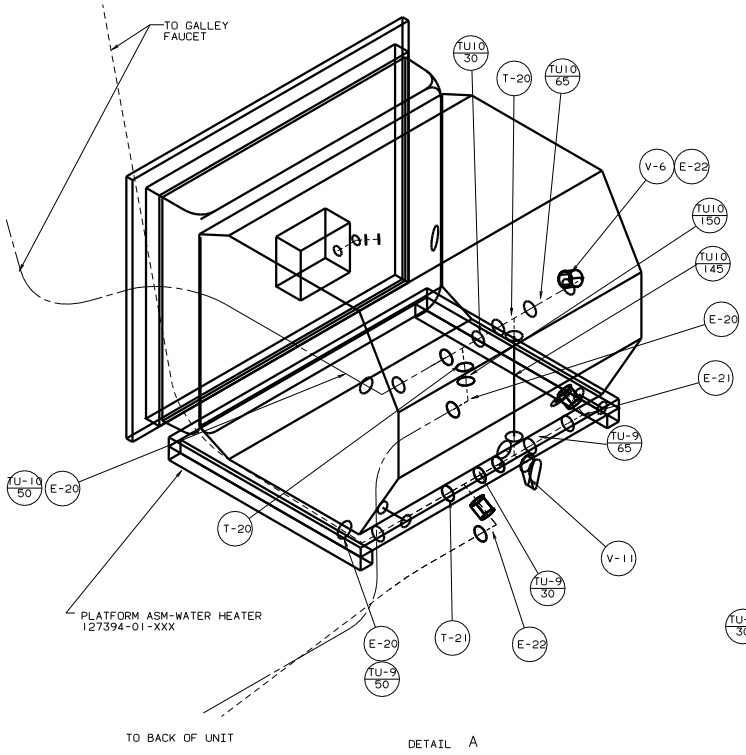
F-4 SCREW  
 G66-08-12U (4)  
 SEALANT  
 LOCK ASM  
 110506-02-000

SCREW  
 G68-06-10U (2)  
 SEALANT

LEGEND	
HOT	■■■■
COLD	●●●●

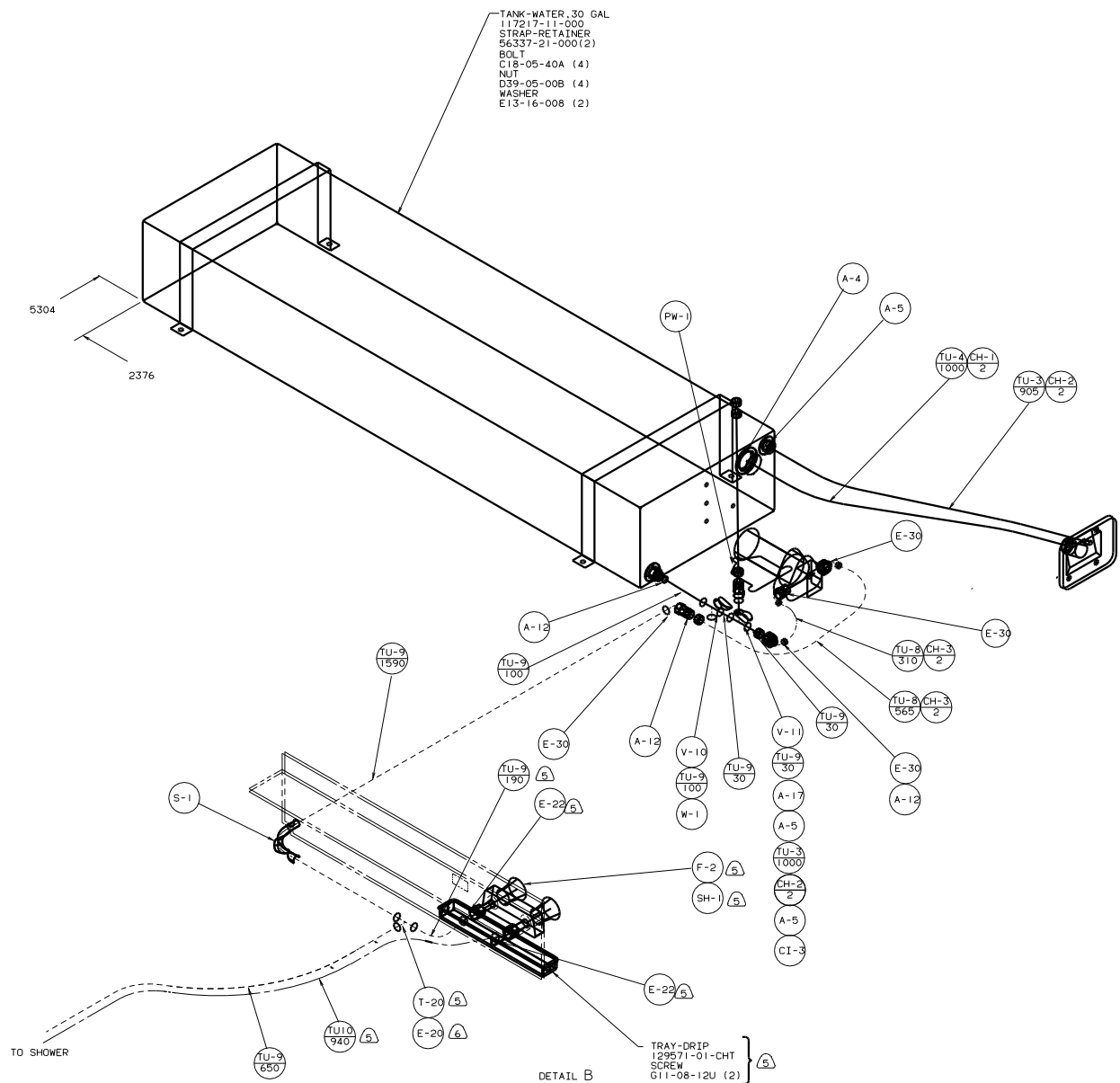
FOR WATER  
 CALLOUTS  
 SEE DWG NO.  
 116230-01-000

**WINNEBAGO** 98 327WP  
 PART NO. 327WP TITLE: WATER SYSTEM INSTL  
 DATE DATE UNDESIGNED TOLERANCES ARE:  
 DATE ONE-PLACE IN INCHES  
 DATE TWO-PLACE IN INCHES  
 DATE THIRD PLACE IN INCHES  
 DATE THIRD PLACE IN MILLIMETERS  
 LARGEST SCALE NONE TO THIS SCALE LEGEND: SHEET 1 OF 3 DWG NO. 128622  
 ALL DIMENSIONS ARE IN MILLIMETERS



TRAY-DRIP  
129571-01-CHT  
SCREW  
611-08-12U (2)

TITLE		98 327WP	
WATER SYSTEM INSTL		128622	
30-101 SCALE	REV	DATE	BY
SHEET 2 OF 3	1/E		



- TANK-WATER, 30 GAL  
117217-11-000
- STRAP-RETAINER  
56337-21-000(2)
- BOLT  
CI8-05-40A (4)
- NUT  
D39-05-00B (4)
- WASHER  
ET3-16-008 (2)

TRAY-DRIP  
129571-01-CHT  
SCREW  
G11-08-12U (2)

DETAIL B  
45G BED-TWINS

98 327WP

TITLE		JOB NO	
WATER SYSTEM INSTL		128622	
NO. OF SHEETS	TOTAL SHEETS	DATE	BY
3 OF 3	3		