

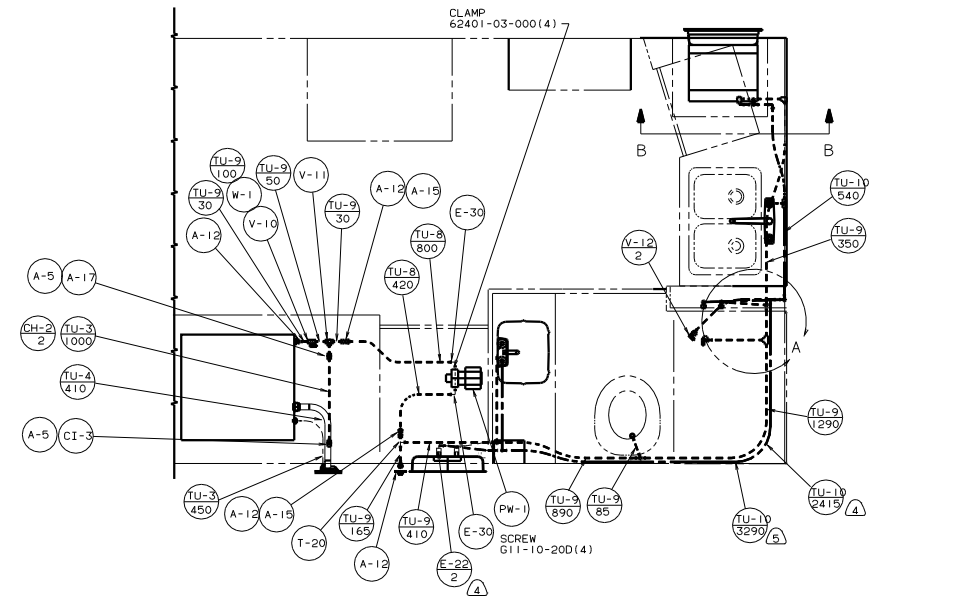
0
 FRONT AXLE

- 11 US ONLY
- 10 SECURE VENT TUBES TO FLOOR WITH BRACKET 95061-01-000(2), CLAMP 62401-02-000, PLATE COVER 94346-03-000, SCREW 667-10-12B(2), AND STAPLE 5403-03-000.
 - 9 VENT PIPE MUST PROJECT 51 MINIMUM AND 64 MAXIMUM ABOVE ROOF FOR PROPER FIT AND FUNCTION.
 8. SEE DWG 61607-01-000 FOR INSTL OF GROMMETS.
 7. SEAL ALL AROUND SHOWER WITH SILICONE.
 6. FOR CANADIAN UNITS EACH HOLDING TANK SHALL HAVE A CSA APPROVAL STAMPED NEAR THE IAMPO APPROVAL.
 5. EXPOSED PIPE ABOVE ROOF TO BE PAINTED 37163-01-000.
 4. ALL EXTERIOR OPENINGS AROUND PIPE TO BE SEALED WITH 110744-01-000.
 3. ALL PIPE AND FITTINGS TO BE ASSEMBLED WITH SOLVENT 4020-01-000.
 2. SLOPE OF TRAP ARM MUST BE 6 PER 305 MINIMUM.
 1. SLOPE OF HORIZONTAL PIPING TO BE 6 PER 305 MINIMUM.

FOR DRAINAGE CALLOUTS SEE DWG NO. 116229-01-000
 X-X

WINNEBAGO 98 322WK				
QTY	DATE	UNDESIGNED TOLERANCES ARE:	MATERIAL	
CHP	DATE	WHOLE OR 1/16"		
PIE	DATE	ONE-PLACE (R.A.)		
P/E	DATE	TWO-PLACE (R.A.)		
CONP	DATE	THIRD WHOLE PRODUCTION		

LABOR: 322WK 8 TITLE: DRAINAGE SYSTEM INSTL
 R14 # SCALE: NONE 2D/3D SCALE: NONE 1/8" = 1' DRAW NO: 126027
 ALL DIMENSIONS ARE IN MILLIMETERS SHEET 1 OF 1



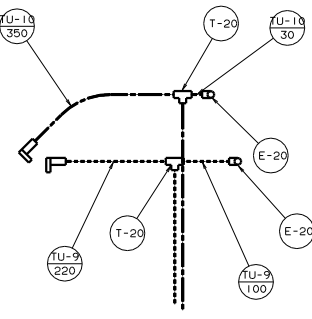
- LOCK ASM
110506-02-000
- SCREW
G66-08-12U(4)
- SEALANT
- F-4
- A-4
- CH-1
- CH-2
- 2
- A-5

- TANK ASM-WATER
109606-05-000
- STRAP
56337-15-000(2)
- BOLT
C18-05-40A(4)
- NUT
D34-05-00C(4)

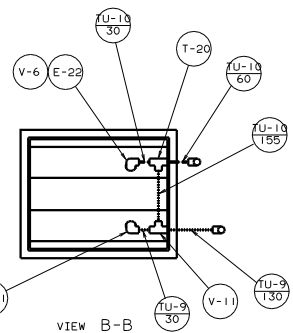
- EXTR
2754-51-005(2)
- SCREW
G59-08-12B(4)

- FAUCET
79527-03-CHT
- GASKET
91253-01-000

- PANEL
78498-01-CHT
- SCREW
G11-08-12B(4)
- COVER
78500-01-CHT(4)

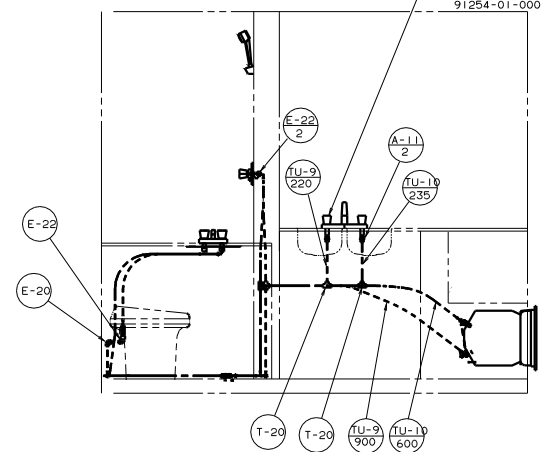


DETAIL A



VIEW B-B

- FAUCET
103243-01-CHT (DOUBLE CONTROL)
- 104114-02-CHT (SINGLE CONTROL)
- GASKET
91254-01-000



- (6) CAPSEAL SEE SEALANT MANUAL.
 - (5) USE WITHOUT 64R EXTERIOR WASH STATION.
 - (4) 64R EXTERIOR WASH STATION.
1. ALL TUBING TO BE SECURED AT 1200 INTERVALS MAX WITH CLAMP 10495-01-000 AND SCREW G67-10-12B.
 2. TUBING TO BE INSTALLED WITH SUFFICIENT SLOPE TO PROVIDE DRAINAGE TO NEAREST VALVE.
 1. PLASTIC FITTINGS TO BE SEALED WITH SEALANT 84456-01-000.

NOTES:

LEGEND
 HOT HOT
 COLD COLD

X-X FOR WATER CALLOUTS SEE DWG NO. 116230-01-000

WINNEBAGO 98 322WK
 322WK 8 WATER SYSTEM INSTL
 REF: 116913