



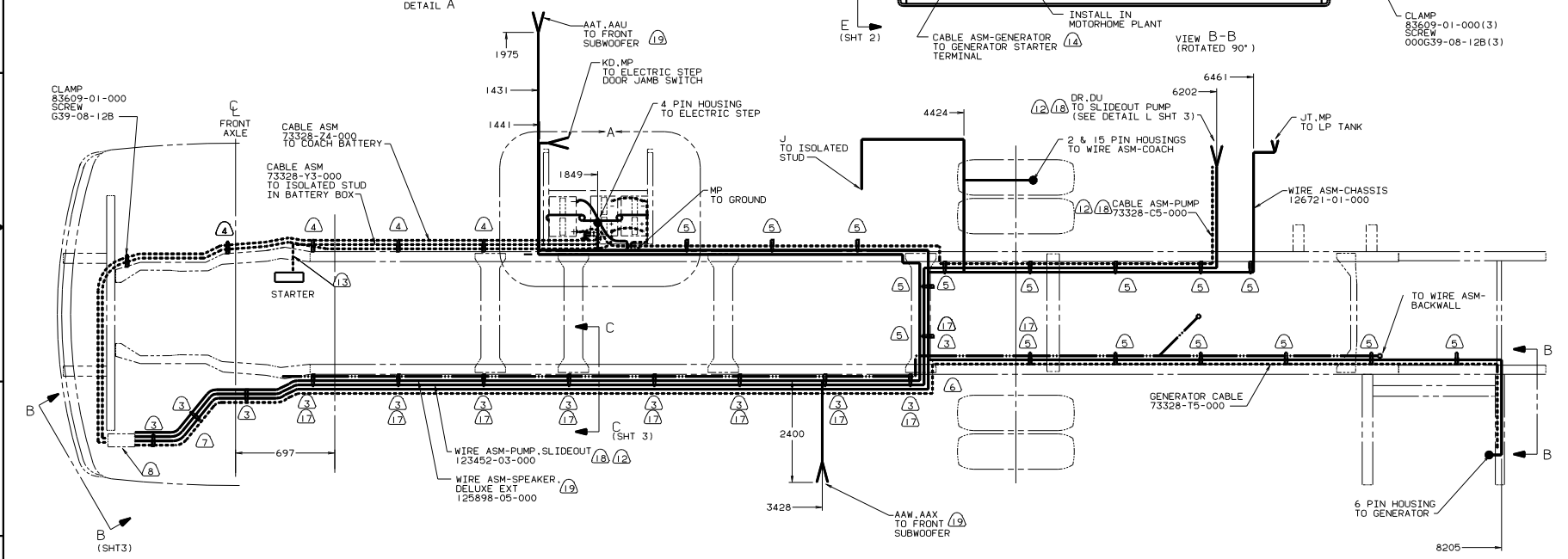
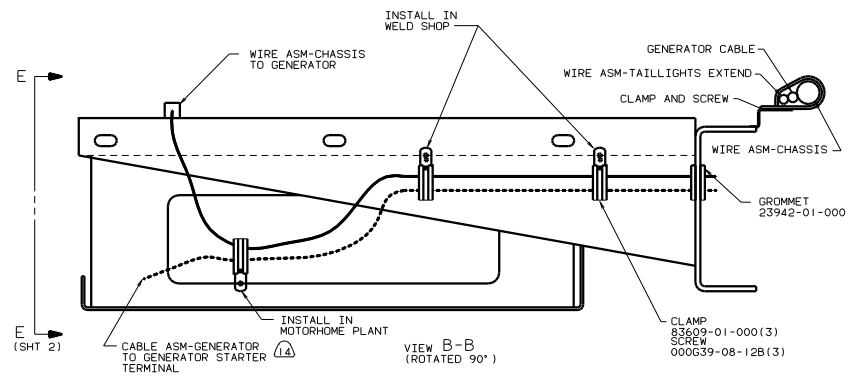
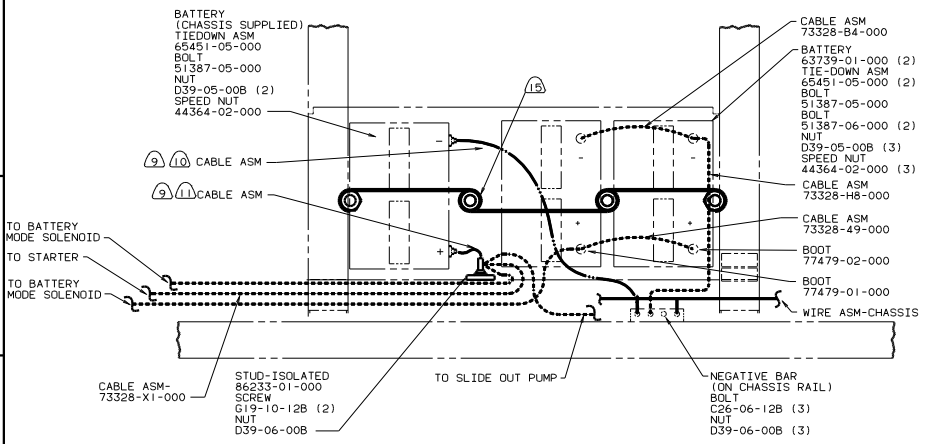
DANGER

Danger of electrical shock, burns or death. Always remove all power sources before attempting any repair, service or diagnostic work. Power can be present from shore power, generator, inverter or battery. All power sources must be disabled and secured before performing any service.



CAUTION

If you lack the skills, tools or equipment to perform diagnostic or repair work leave such work to an authorized Winnebago Industries dealer or other qualified shop.



- (12) 1A4 LEVELING JACK - WITHOUT
 - (11) TRIM CABLE TO 400MM, ADD TERMINAL 8348-01-000.
 - (10) TRIM CABLE TO 1300MM, ADD TERMINAL 8348-01-000.
 - (9) SUPPLIED WITH CHASSIS.
 - (8) SEE WIRING INSTL-FRONT END FOR ADDITIONAL INFORMATION.
 - (7) COVER WITH CONDUIT 41953-09-000, 41953-10-000 & 41953-11-000 AS REQUIRED.
 - (6) ROUTE WIRES AND CABLE OVER SPRING HANGER AND ON TOP OF CHASSIS RAIL AT THIS POINT.
 - (5) CLAMP 10497-03-000, SCREW G39-08-12B
 - (4) CLAMP 83609-01-000, SCREW G39-08-12B
 - (3) CLAMP 83610-01-000, SCREW G39-08-12B.
2. SECURE CONDUIT 41953-01-000, 41953-02-000 AND 41953-03-000 OVER ALL WIRES IN CONTACT WITH SHARP EDGES.
1. LEGEND: — WINNEBAGO, - - - - - CABLE, - - - - - CHASSIS SUPPLIED.

- (19) 21V SOUND SYSTEM-DXL
- (18) 09L SLIDE-OUT ROOM, FRT LT WITH SLIDEOUT ROOM USE CLAMP 83610-03-000 & SCREW G39-08-12B
- (16) SECURE SO WIRES DO NOT CONTACT EXHAUST.
- (15) USE TWO NUTS HERE TO ACCOUNT FOR BATTERY HEIGHT DIFFERENCE.
- (14) ROUTE WIRES & CABLE INSIDE CHASSIS RAIL AT THIS POINT & TO THE REAR.
- (13) BATTERY CABLE MUST BE INSTALLED TO STARTER MOTOR BEFORE ENGINE WIRING HARNESS AND ROUTED IN SUCH A MANNER AS TO PREVENT ANY POSSIBLE DEGRADATION FROM THE EXHAUST SYSTEM.

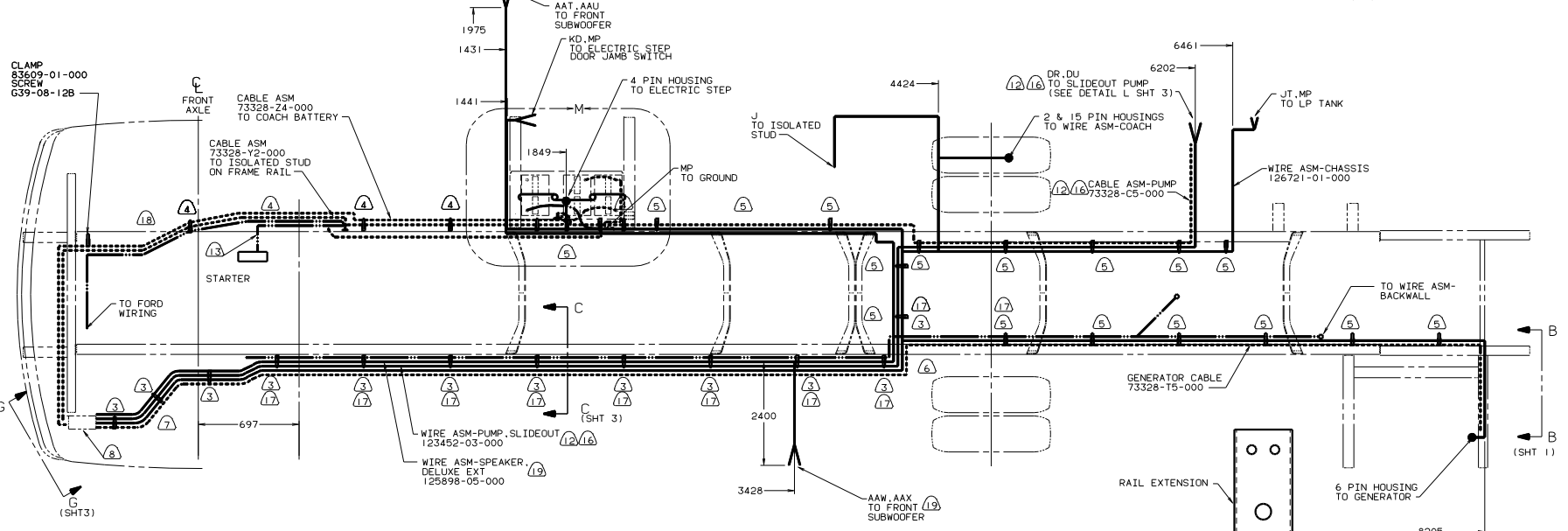
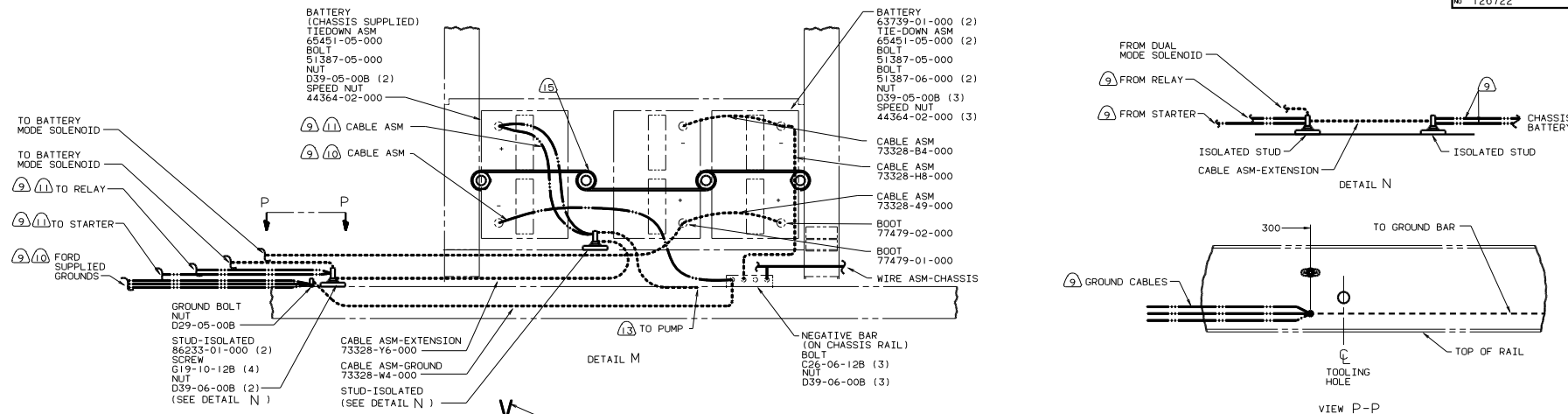
16Q CHASSIS-CHEVY, GAS

FOR ELECTRICAL TORQUE SPECIFICATIONS SEE DWG NO. 128783-01-000

WINNEBAGO 98 F & G35WP

DATE	UNDESIGNED TOLERANCES ARE:	INTEGRAL
DATE	HALF DIM (1:1)	FRACTIONAL
DATE	ONE-PLACE (1:1)	DECIMAL
DATE	TWO-PLACE (1:1)	ANGLES
DATE	THIRD-ANGLE PROJECTION	

REF: 123415 J I 126722

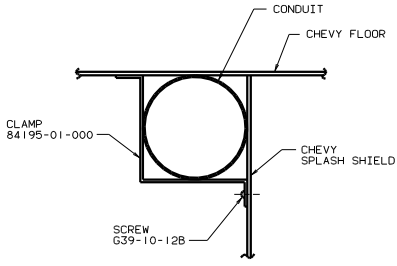


- 11 CUT 14GA WIRE, 6 & 4GA CABLES 500 MM FROM BATTERY TERMINAL. ADD TERMINAL 8331-01-000(2) TO 4GA CABLES AND TERMINAL 8350-01-000(2) TO 14GA WIRES & 6GA CABLES. CONNECT TERMINALS TO ISOLATED STUDS AS SHOWN IN DETAIL N
- 10 TRIM CABLE TO 500MM. ADD TERMINAL 8348-01-000(2). INCLUDE ALL SMALL GROUND WIRES.
- 9 SUPPLIED WITH CHASSIS.
- 8 SEE WIRING INSTL-FRONT END FOR ADDITIONAL INFORMATION.
- 7 COVER WITH CONDUIT 41953-09-000, 41953-10-000 & 41953-11-000 AS REQUIRED.
- 6 ROUTE WIRES AND CABLE OVER SPRING HANGER AND ON TOP OF CHASSIS RAIL AT THIS POINT.
- 5 CLAMP 10497-03-000, SCREW G39-08-12B
- 4 CLAMP 83609-01-000, SCREW G39-08-12B
- 3 CLAMP 83610-01-000, SCREW G39-08-12B.

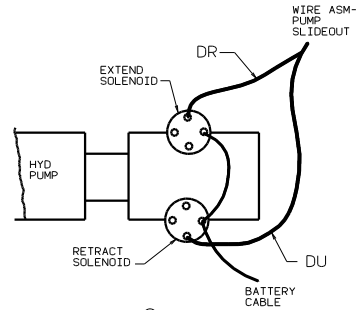
- 19 21V SOUND SYSTEM-DLX.
- 18 HEAT SLEEVING IS NEEDED AROUND ENGINE BEGINNING AT 1900. LENGTH SHOULD BE 1200. PART # FOR 16G 87225-01-000. PART # FOR 17O GA 87225-02-000
- 17 WITH SLIDEOUT ROOM USE CLAMP 83610-03-000 & SCREW G39-08-12B.
- 16 09L SLIDE-OUT ROOM, FRT LT
- 15 USE TWO NUTS HERE TO ACCOUNT FOR BATTERY HEIGHT DIFFERENCE.
- 14 ROUTE WIRES & CABLE INSIDE CHASSIS RAIL AT THIS POINT & TO THE REAR
- 13 BATTERY CABLE MUST BE INSTALLED TO STARTER MOTOR BEFORE ENGINE WIRING HARNESS AND ROUTED IN SUCH A MANNER AS TO PREVENT ANY POSSIBLE DEGRADATION FROM THE EXHAUST SYSTEM.
- 12 1A4 LEVELING JACK-WITHOUT

FOR ELECTRICAL TORQUE SPECIFICATIONS SEE DWG NO. 128783-01-000

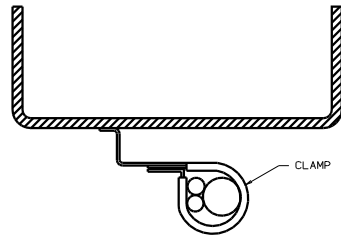
88 F & G35WP	
16D CHASSIS-FORD.GAS	
TITLE	WIRING INSTL-CHASSIS
NO. OF SHEETS	2 OF 4
DWG NO.	126722



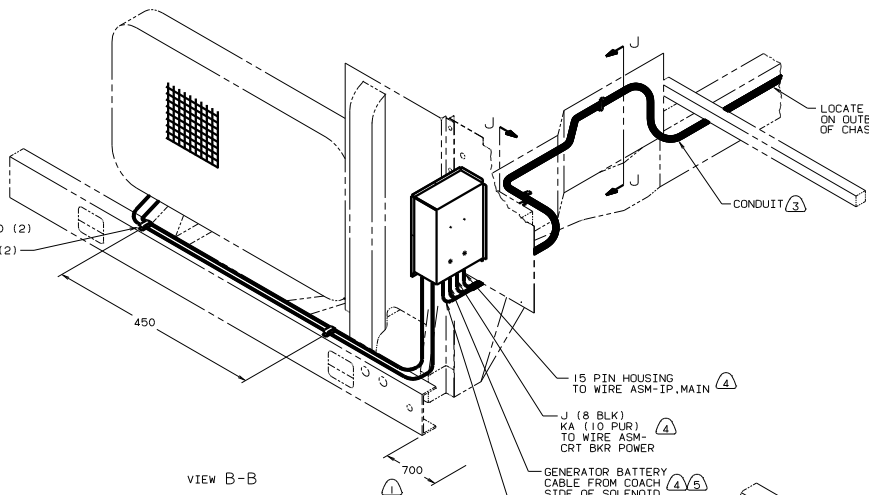
VIEW J-J



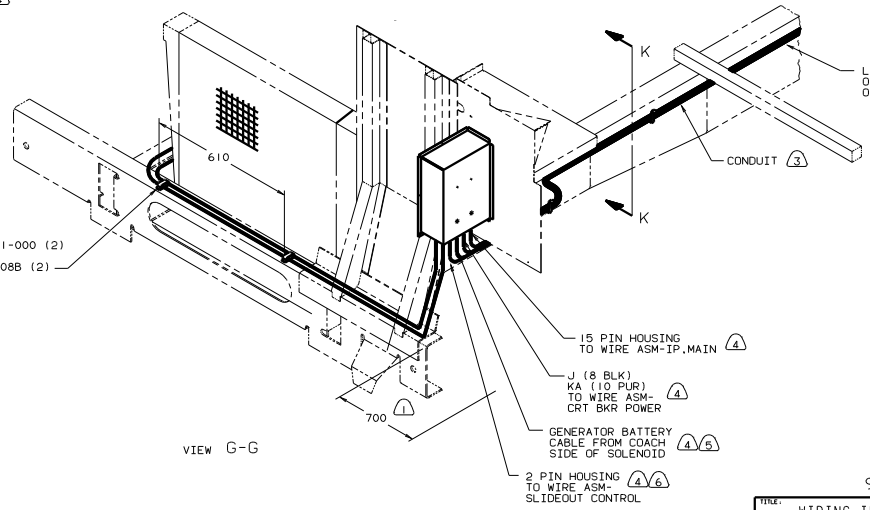
DETAIL L (PLAN VIEW)



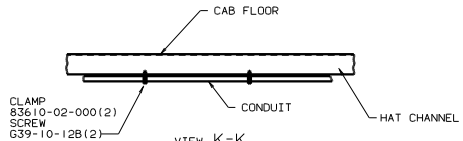
VIEW C-C



VIEW B-B



VIEW G-G



VIEW K-K

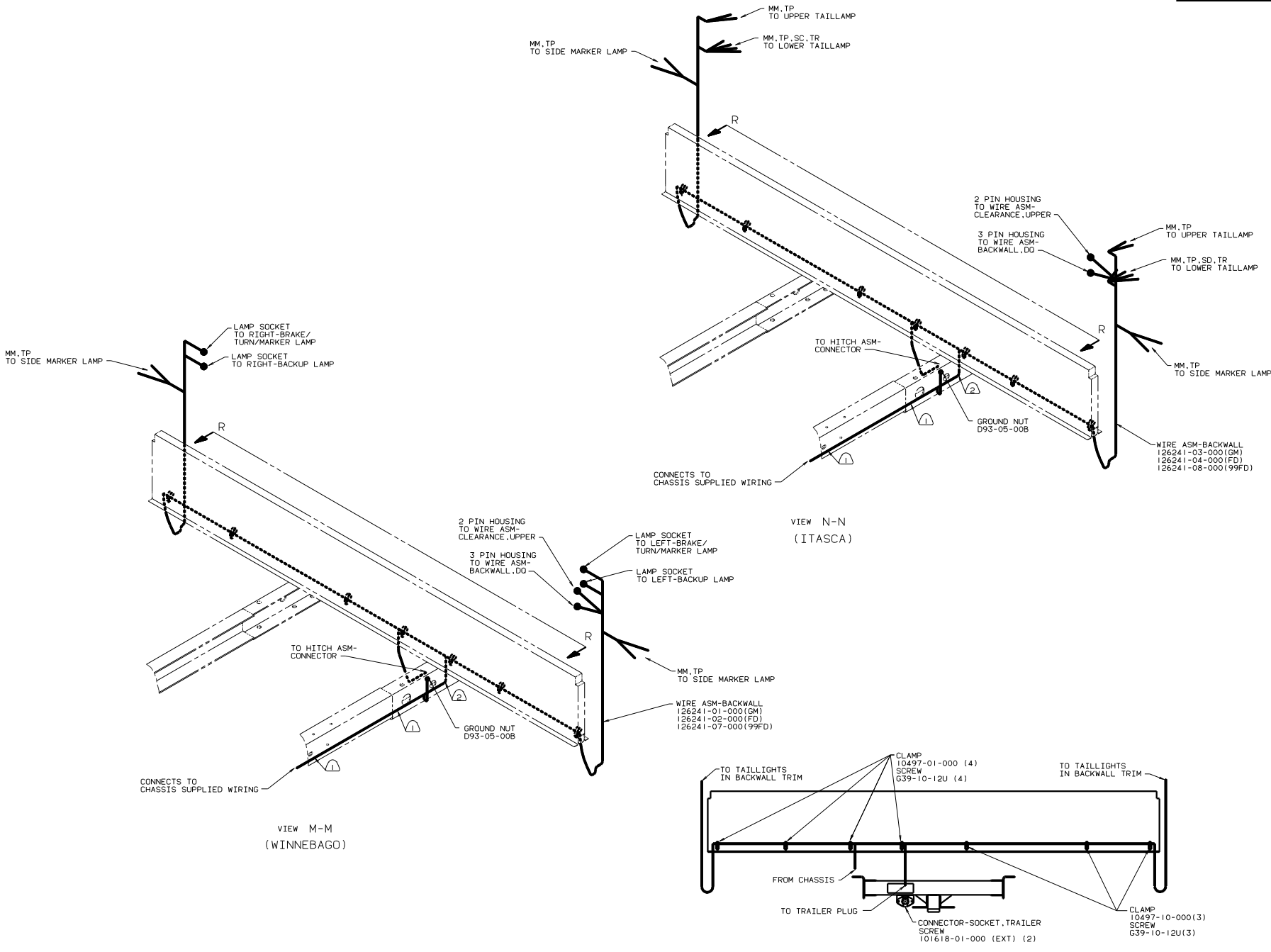
- Ⓜ WITH SLIDEOUT ROOM, WITHOUT LEVELING JACKS.
- Ⓝ CONNECT CABLES TO COACH SIDE OF BATTERY DISCONNECT WHEN BATTERY DISCONNECT IS USED.
- Ⓟ FOR ADDITIONAL INFORMATION SEE WIRING INSTALATION FRONT END.
- Ⓝ COVER WITH CONDUIT 41953-10-000 AND 41953-11-000 AS REQUIRED.
- Ⓜ SUPPLIED WITH CHASSIS.
- Ⓟ LAY BATTERY AND GENERATOR CABLES TO THIS DIMENSION FROM END OF CROSSMEMBER TO START INSTALLATION.

NOTES:

FOR ELECTRICAL TORQUE SPECIFICATIONS SEE DWG NO. 128783-01-000

98 F & G35WP

TITLE		WIRING INSTL-CHASSIS	
30	NO	1	REV
SHEET	3	OF	4
DWG NO.		126722	



- ② WIRE TO BE ROUTED ON BACK SIDE OF RISER.
 ① WIRE TIE 8343-02. FASTEN TO FRAME AT LEAST ONCE EVERY 600MM.

FOR ELECTRICAL TORQUE SPECIFICATIONS SEE DWG NO. 128783-01-000

98 G35MP ONLY	
TITLE	WIRING INSTL-CHASSIS
NO. OF SHEETS	4 OF 4
SHEET NO.	4
DWG NO.	126722