



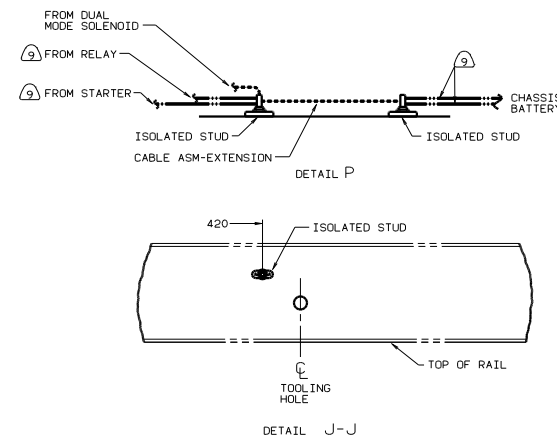
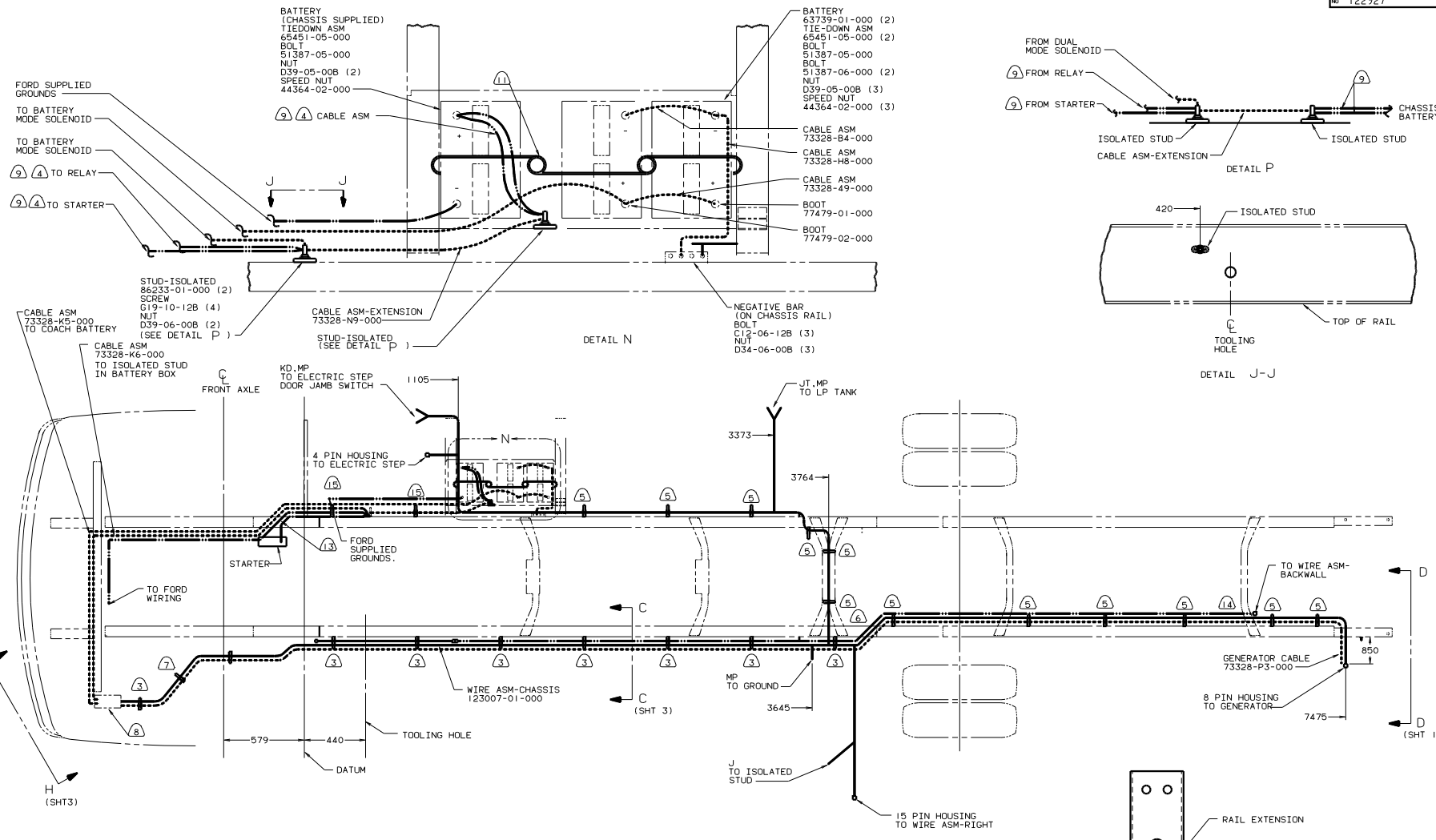
DANGER

Danger of electrical shock, burns or death. Always remove all power sources before attempting any repair, service or diagnostic work. Power can be present from shore power, generator, inverter or battery. All power sources must be disabled and secured before performing any service.



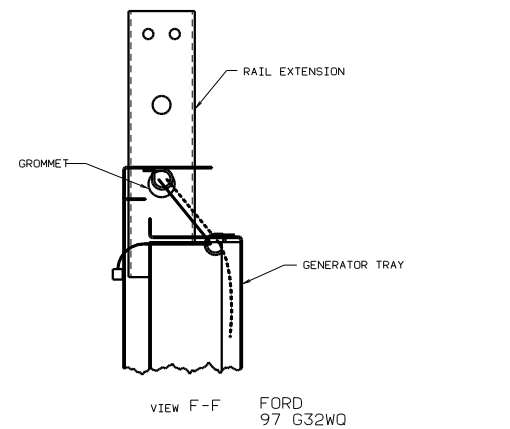
CAUTION

If you lack the skills, tools or equipment to perform diagnostic or repair work leave such work to an authorized Winnebago Industries dealer or other qualified shop.



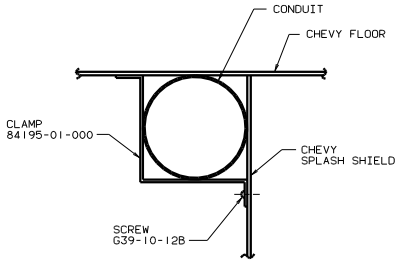
- 12 COVER EDGE OF HOLE THROUGH BATTERY BOX WITH TRIM-VINYL 72368-02-000.
- 11 USE TWO NUTS HERE TO ACCOUNT FOR BATTERY HEIGHT DIFFERENCE.
- 10 TRIM CABLE TO 800MM, ADD TERMINAL 8348-01-000.
- 9 SUPPLIED WITH CHASSIS.
- 8 SEE WIRING INSTL-FRONT END FOR ADDITIONAL INFORMATION.
- 7 COVER WITH CONDUIT 41953-09-000, 41953-10-000 & 41953-11-000 AS REQUIRED.
- 6 ROUTE WIRES AND CABLE OVER SPRING HANGER AND ON TOP OF CHASSIS RAIL AT THIS POINT. ATTACH TO FLOOR SUPPORT OVER AXLE.
- 5 CLAMP 10497-03-000, SCREW G39-08-12B.
4. CUT 14GA WIRE, 6 & 4GA CABLES 500 MM FROM BATTERY TERMINAL, ADD TERMINAL 8331-01-000(2) TO 4GA CABLES AND TERMINAL 8350-01-000(2) TO 14GA WIRES & 6GA CABLES. CONNECT TERMINALS TO ISOLATED STUDS AS SHOWN IN DETAIL P.
- 3 CLAMP 83610-01-000, SCREW G39-08-12B.
2. SECURE CONDUIT 41953-01-000, 41953-02-000 AND 41953-03-000 OVER ALL WIRES IN CONTACT WITH SHARP EDGES.
1. LEGEND: — WINNEBAGO, - - - - - CABLE, — CHASSIS SUPPLIED.

- 15 CLAMP 83609-01-000, SCREW G39-08-12B.
- 14 ROUTE WIRES & CABLE INSIDE CHASSIS RAIL AT THIS POINT & TO THE REAR.
- 13 BATTERY CABLE MUST BE INSTALLED TO STARTER MOTOR BEFORE ENGINE WIRING HARNESS AND ROUTED IN SUCH A MANNER AS TO PREVENT ANY POSSIBLE DEGRADATION FROM THE EXHAUST SYSTEM.

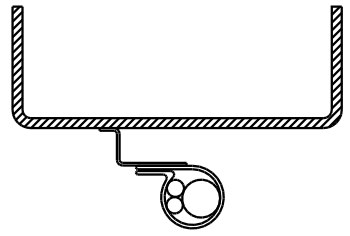


FORD 97 G32W0

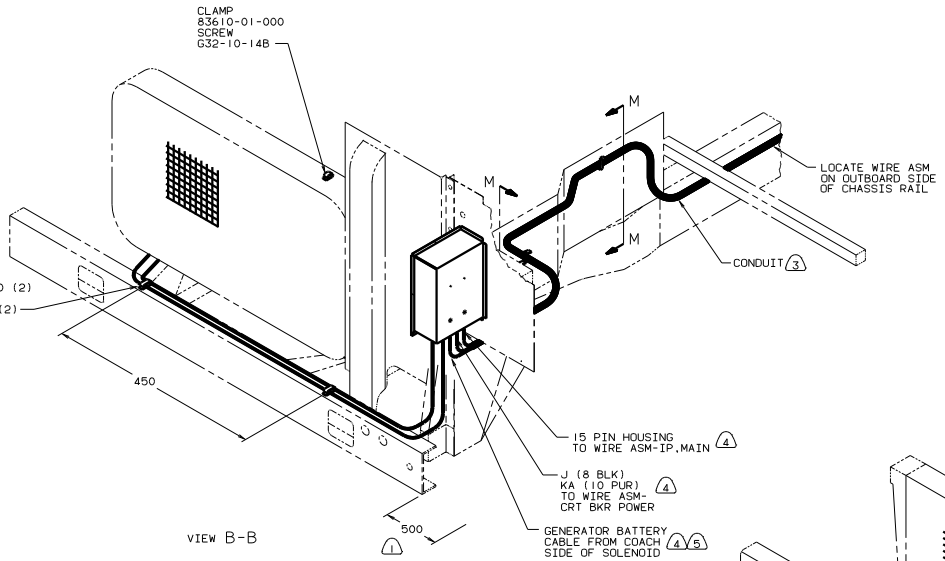
TITLE		WIRING INSTL-CHASSIS	
DO NOT SCALE DIMENSIONS	DATE	REV	NO
SHEET 2 OF 3		1	6
		122927	



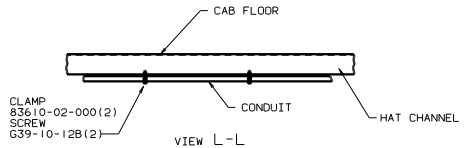
VIEW M-M



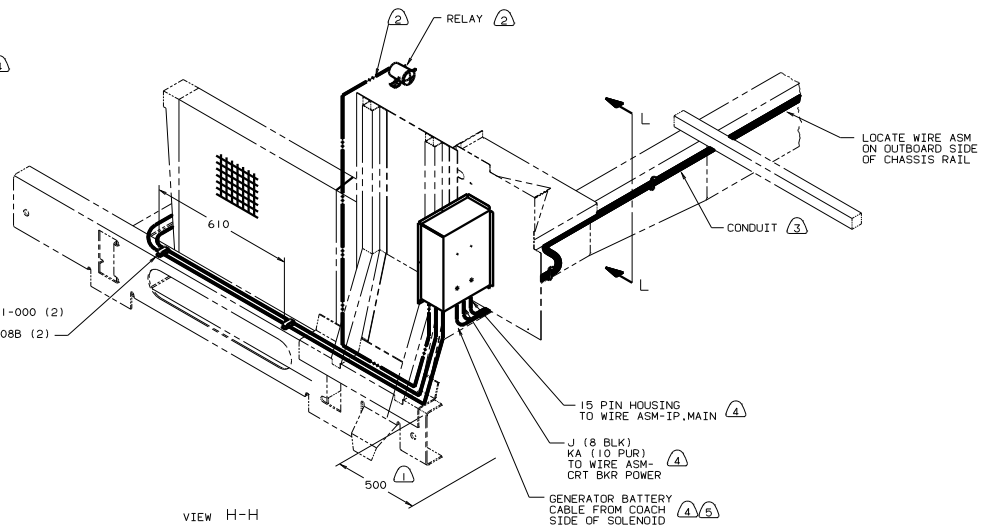
VIEW C-C



VIEW B-B



VIEW L-L



VIEW H-H

- Ⓐ CUT OFF EXCESS END OF WIRE TIE.
- Ⓑ CONNECT CABLES TO COACH SIDE OF BATTERY DISCONNECT WHEN BATTERY DISCONNECT IS USED.
- Ⓒ FOR ADDITIONAL INFORMATION SEE WIRING INSTALATION FRONT END.
- Ⓓ COVER WITH CONDUIT 41953-10-000 AND 41953-11-000 AS REQUIRED.
- Ⓔ SUPPLIED WITH CHASSIS.
- Ⓕ LAY BATTERY AND GENERATOR CABLES TO THIS DIMENSION FROM END OF CROSSMEMBER TO START INSTALLATION.

NOTES:

97 G32WQ

TITLE: WIRING INSTL-CHASSIS	
30 THE SCALE APPLYING TO THIS SHEET	1:1
3 OF 3	122927