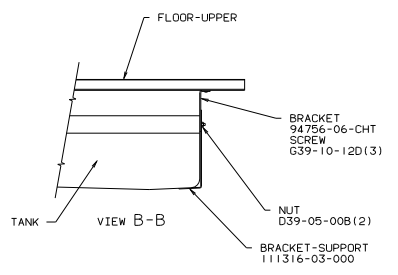
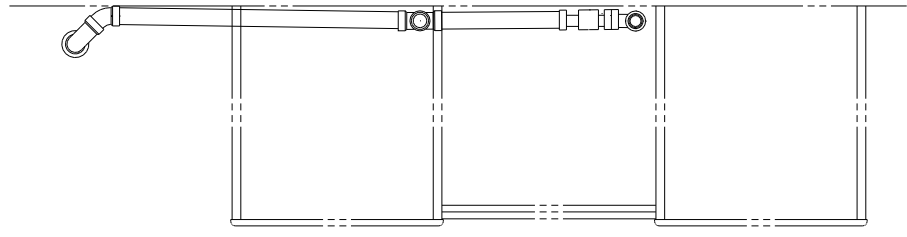
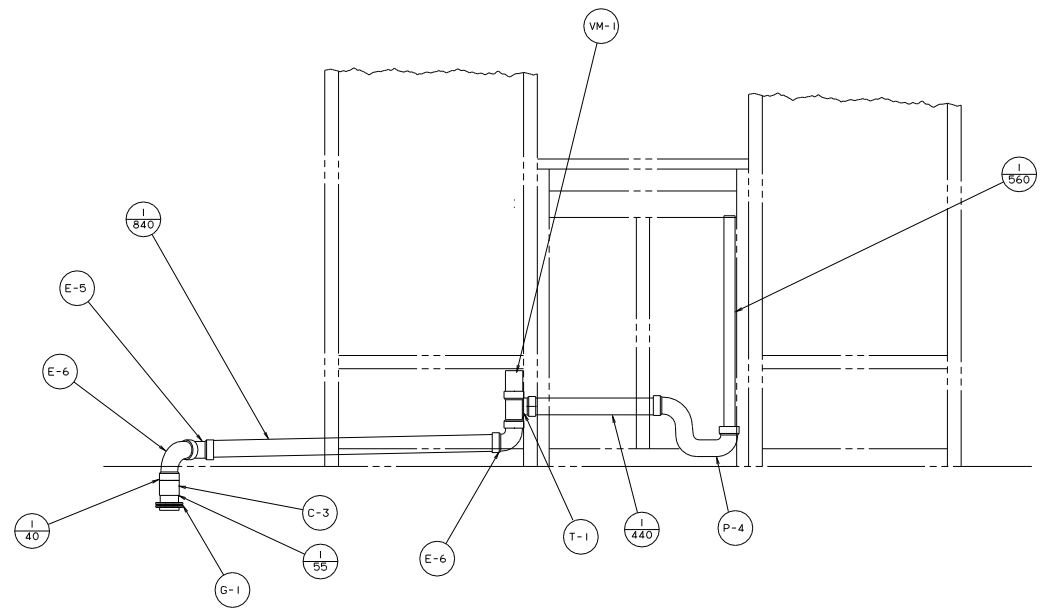


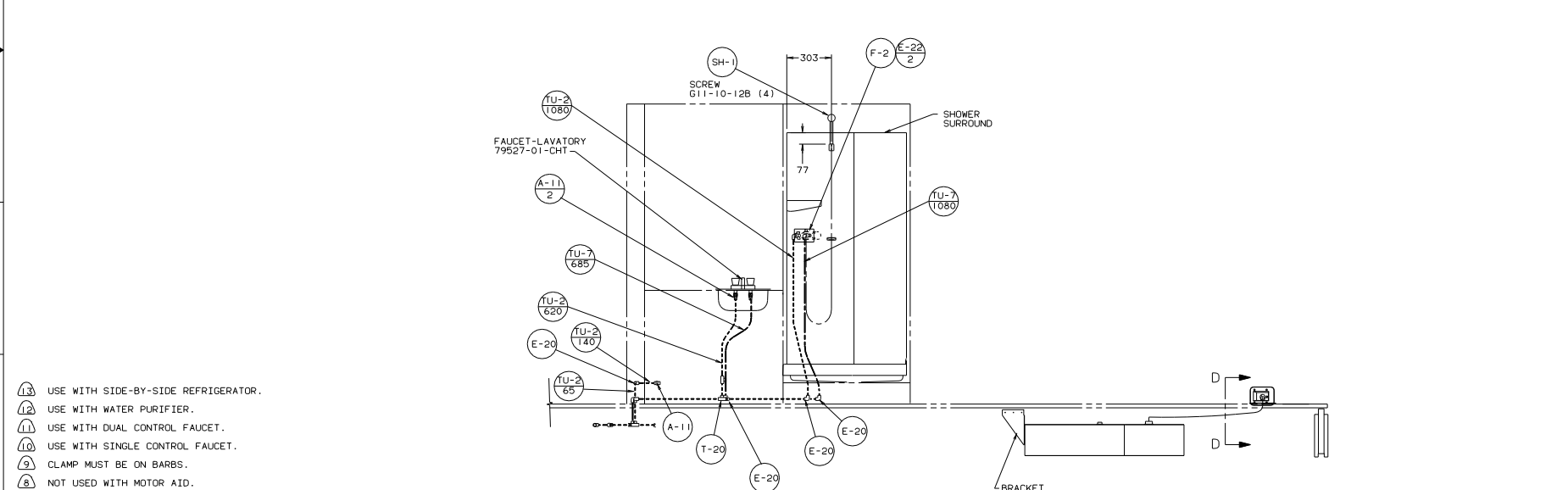
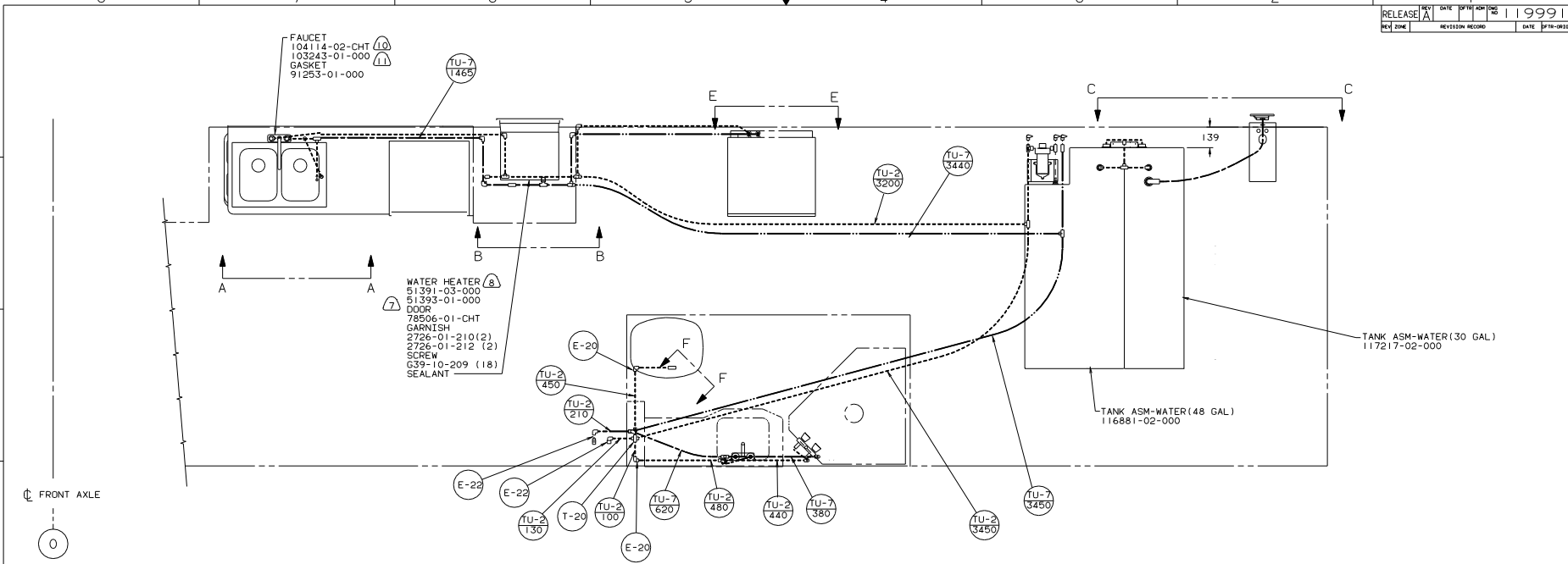
VIEW A-A
WITHOUT WASHER/DRYER



VIEW B-B



VIEW C-C
WITH WASHER/DRYER



- (13) USE WITH SIDE-BY-SIDE REFRIGERATOR.
 - (12) USE WITH WATER PURIFIER.
 - (11) USE WITH DUAL CONTROL FAUCET.
 - (10) USE WITH SINGLE CONTROL FAUCET.
 - (9) CLAMP MUST BE ON BARBS.
 - (8) NOT USED WITH MOTOR AID.
 - (7) USE WITH MOTOR AID.
 - (6) NOT USED WITH WASHER/DRYER.
 - (5) USE WITH WASHER/DRYER.
 - (4) LOCATE LUMBER TO SUPPORT WATER HEATER.
3. ALL TUBING TO BE SECURED AT 1200 INTERVALS MAX WITH CLIP 91951-01-000 AND SCREW G13-06-16U.
2. TUBING TO BE INSTALLED WITH SUFFICIENT SLOPE TO PROVIDE DRAINAGE TO NEAREST VALVE.
1. PLASTIC FITTINGS TO BE SEALED WITH SEALANT 84456-01-000.

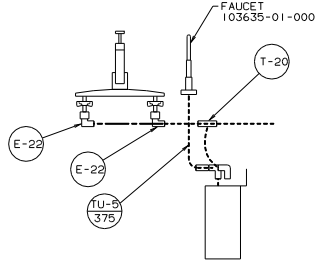
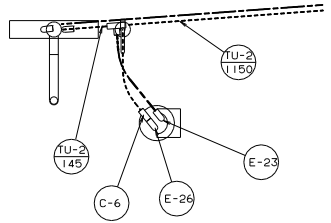
(X-X) FOR WATER CALLOUTS SEE DWG NO. 116230-01-000

LEGEND	
HOT	—————
COLD	-----

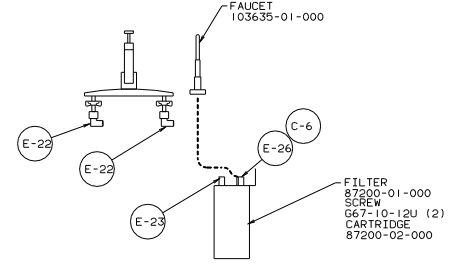
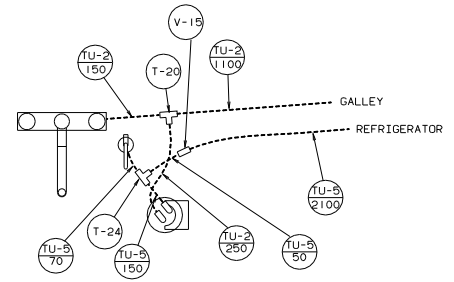
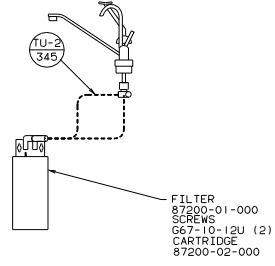
WINNEAGO 96 G37RW

DATE	UNSPECIFIED TOLERANCES ARE:	MATERIAL
CHG	WHOLE DIM (IN)	1:16
FR	ONE-PLACE (IN.XI)	
PL	TWO-PLACE (IN.XXX)	
DR	ANGLE	
CDR	THIRD ANGLE PRACTICE	

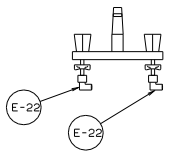
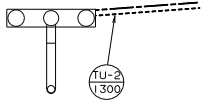
LANE# G37RW TITLE: WATER SYSTEM INSTL
 DIA # SCALE: NONE 30 NET SCALE DRAWING SHEET 1 OF 4
 ALL DIMENSIONS ARE IN MILLIMETERS REF: 116445 119991



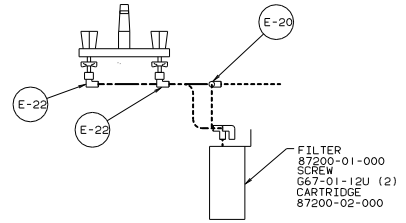
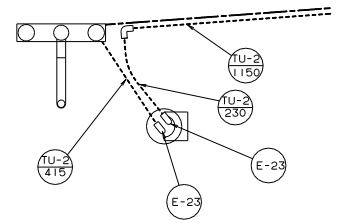
VIEW A-A (10)



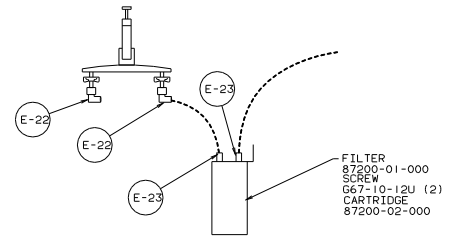
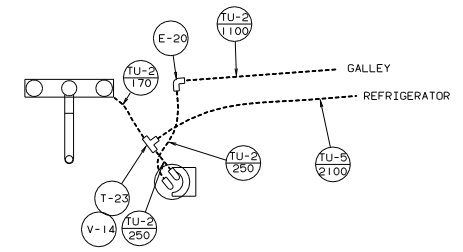
VIEW A-A (10) (13)



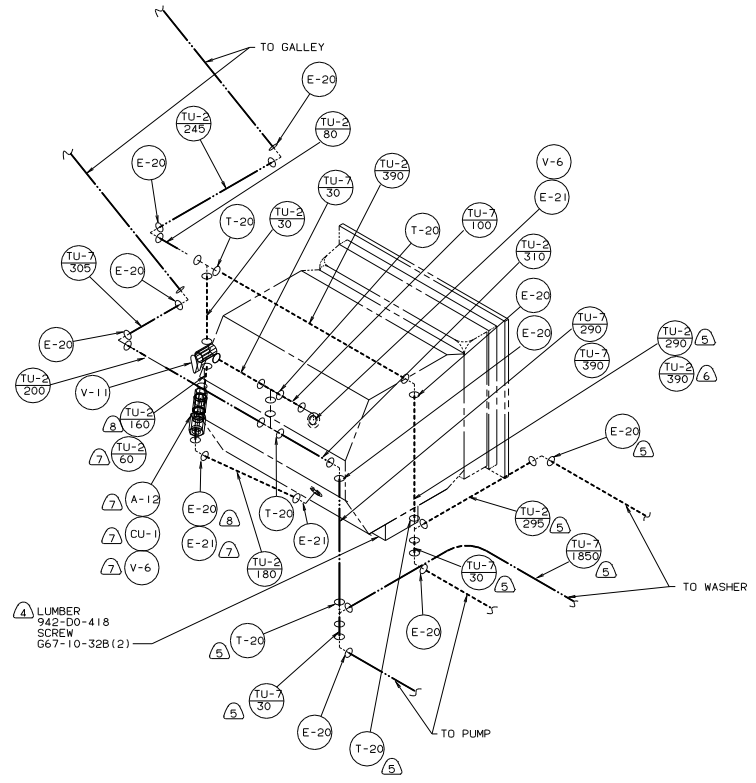
VIEW A-A (11)



VIEW A-A (11) (12)

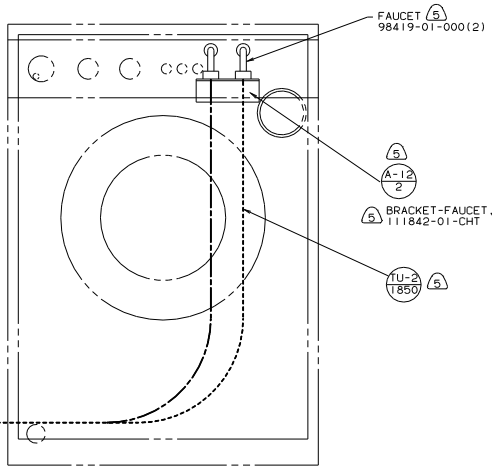


VIEW A-A (11) (13)

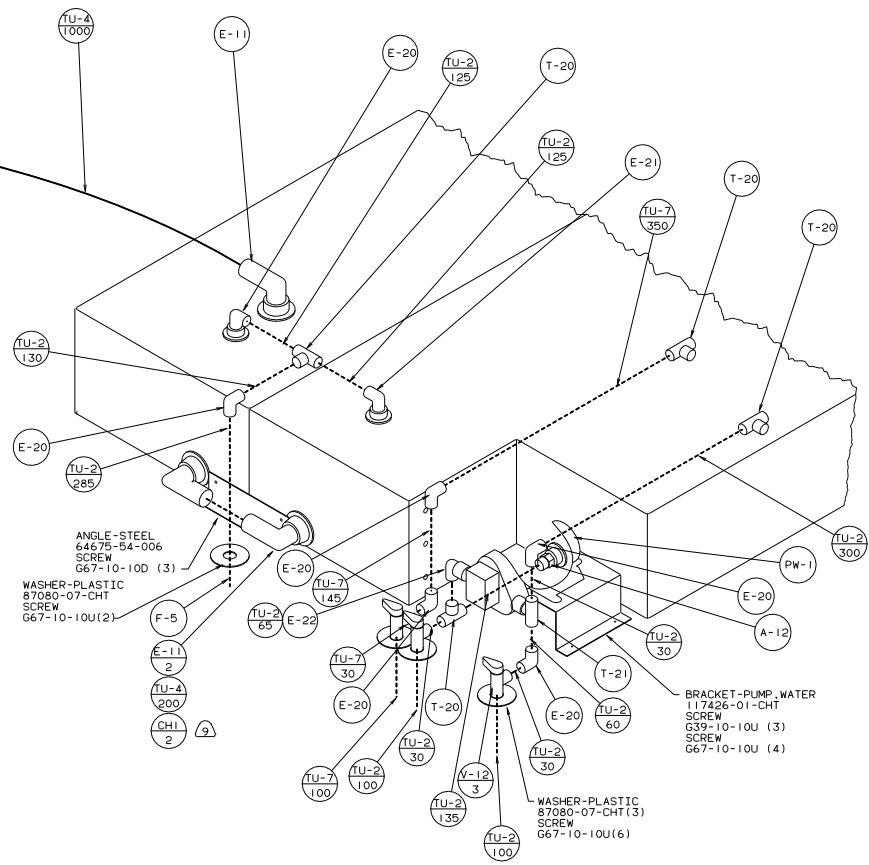
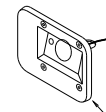


VIEW B-B

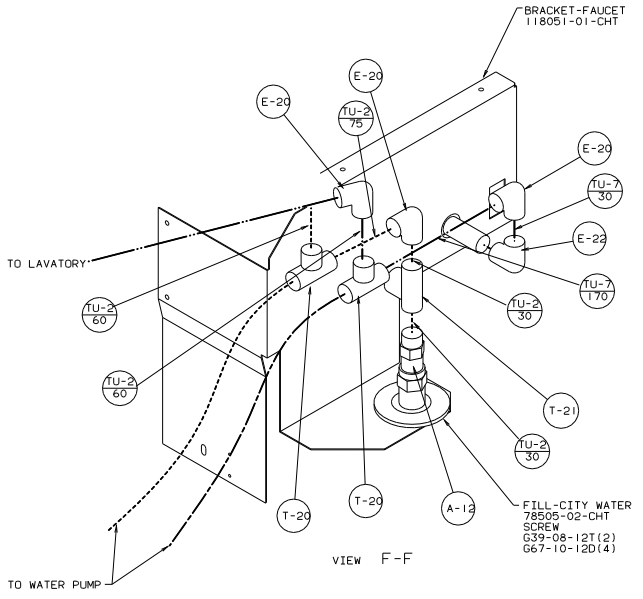
TITLE: WATER SYSTEM INSTL	
30 NET SCALE DRAWING	DATE
SHEET 3 OF 4	119991



VIEW E-E



VIEW C-C



VIEW F-F

TITLE: WATER SYSTEM INSTL	
30 NET SCALE DRAWING	REV 1
SHEET 4 OF 4	DATE 119991