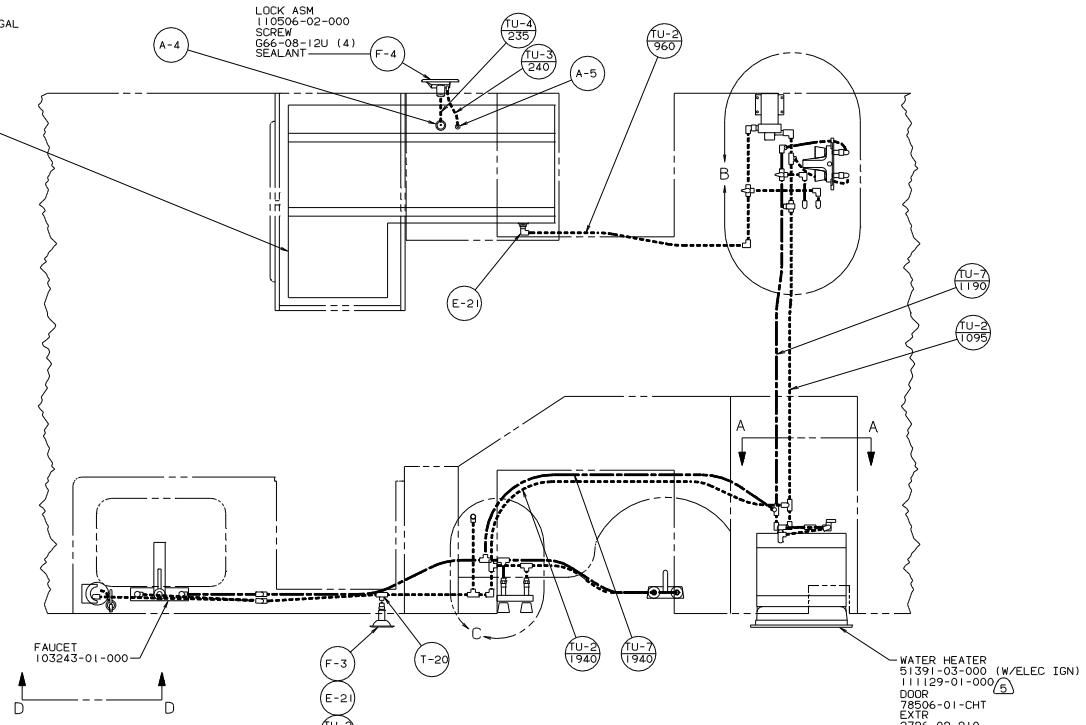


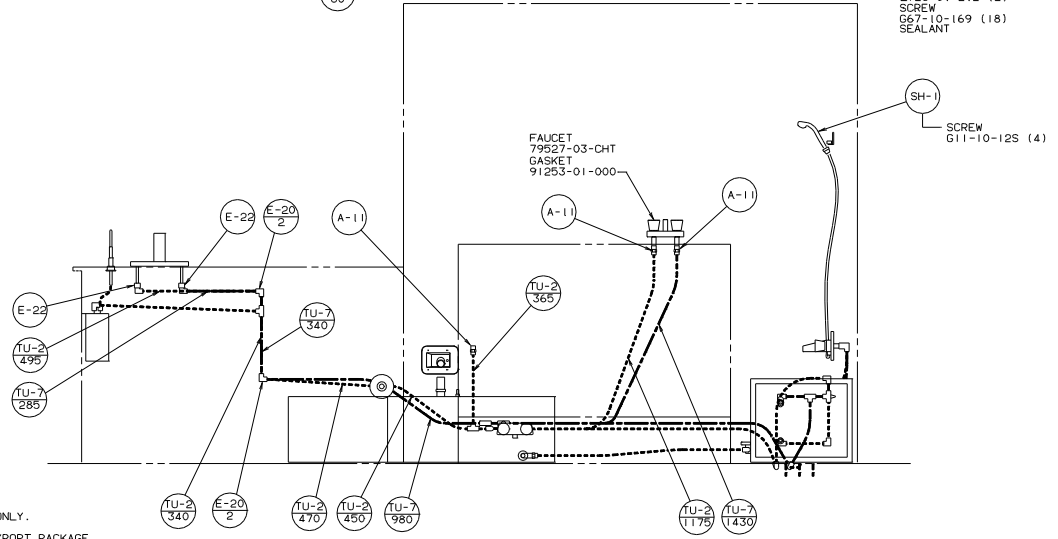
TANK ASM-WATER, 55 GAL
 113883-02-000
 STRAP
 96337-23-000 (2)
 BOLT
 C18-05-40A (4)
 WASHER
 E13-16-00B (4)
 NUT
 D34-06-00B (4)

LOCK ASM
 110506-02-000
 SCREW
 G66-08-12U (4)
 SEALANT



WATER HEATER
 51391-03-000 (W/ELEC IGN)
 111129-01-000 (5)
 DOOR
 78506-01-CHT
 EXTR
 2726-02-210
 2726-01-212 (2)
 SCREW
 G67-10-169 (18)
 SEALANT

FAUCET
 79527-03-CHT
 GASKET
 91253-01-000



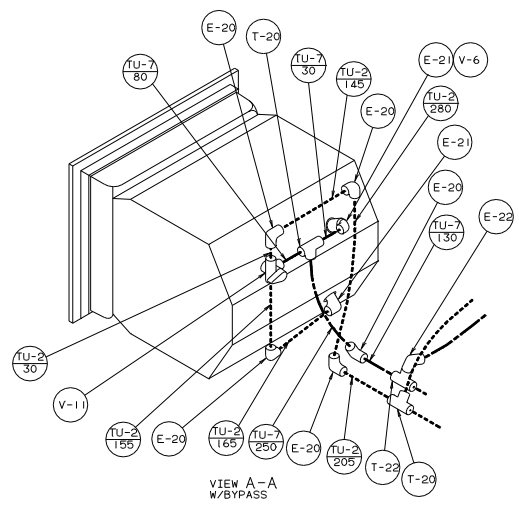
- (6) USE WITH MOTOR AID ONLY.
- (5) USE WITH EUROPEAN EXPORT PACKAGE.
- (4) USE WITH EXTERIOR SHOWER.

3. ALL TUBING TO BE SECURED AT 1200 INTERVALS MAX WITH CLAMP 10495-01-000 OR CLIP 91951-01-000 AND SCREW G67-10-12B.
2. TUBING TO BE INSTALLED WITH SUFFICIENT SLOPE TO PROVIDE DRAINAGE TO NEAREST VALVE.
1. PLASTIC FITTINGS TO BE SEALED WITH SEALANT 84456-01-000.

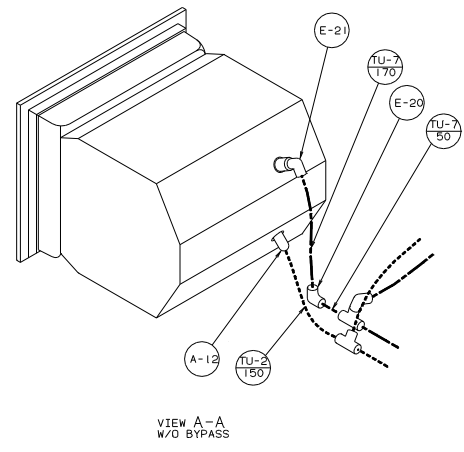
(X-X) FOR WATER CALLOUTS SEE DWG NO. 116230-01-000

LEGEND	
HOT	—————
COLD	-----

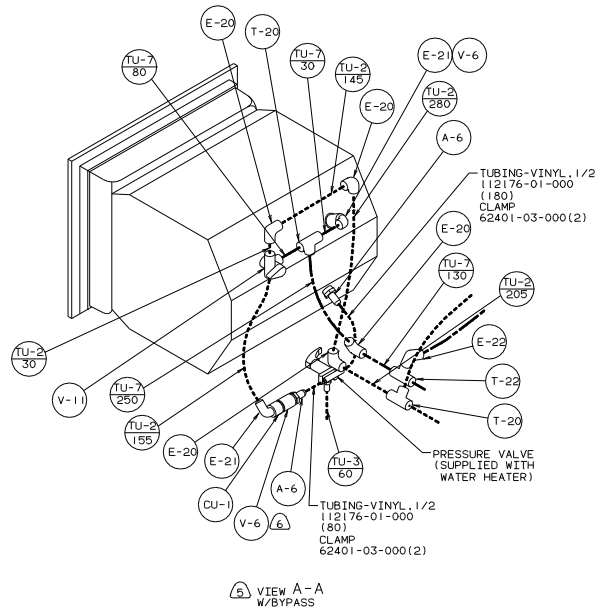
WINNERAGO 95 F32R0	
QTY IN	UNSPECIFIED TOLERANCES ARE MATERIAL
CHDR	WHOLE DIM. IN. ± .1
F/F	ONE-PLACE IN. IN. ± .01
F/E	TWO-PLACE IN. IN. ± .01
F/E	WHOLE
CDR	TWO-PLACE IN. IN. ± .01
LAYOUT NO. F32R05	TITLE: WATER SYSTEM INSTL
REV. # SCALE	NO. OF SHEETS 1 OF 3
ALL DIMENSIONS ARE IN MILLIMETERS	DATE 11/14/24



VIEW A-A
W/BYPASS



VIEW A-A
W/O BYPASS

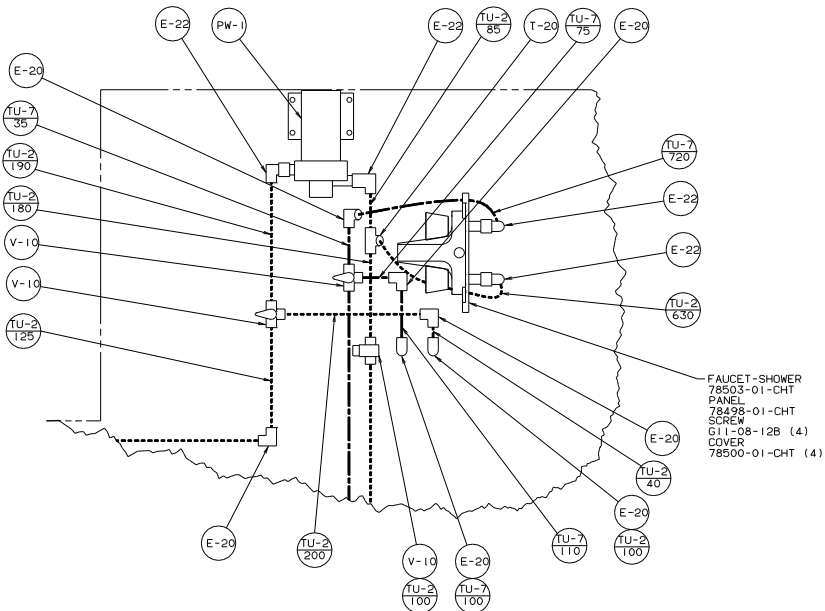


VIEW A-A
W/BYPASS

TUBING-VINYL, 1/2
112176-01-000
(180)
CLAMP
62401-03-000(2)

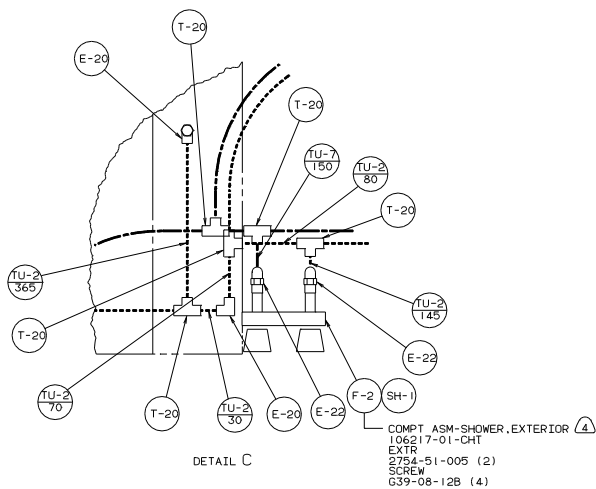
TUBING-VINYL, 1/2
112176-01-000
(80)
CLAMP
62401-03-000(2)

TITLE: WATER SYSTEM INSTL	
30 NET SCALE DRAWING	REV 1.0
SHEET 2 OF 3	DATE 114245



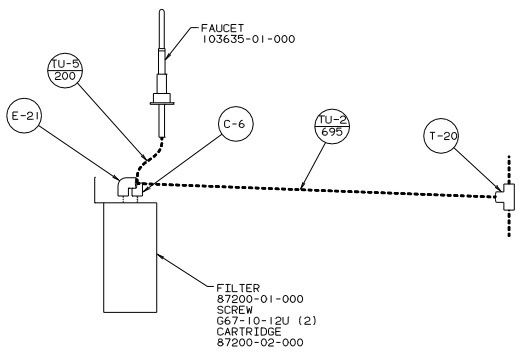
FAUCET-SHOWER
 78503-01-CHT
 PANEL
 78498-01-CHT
 SCREW
 G11-08-12B (4)
 COVER
 78500-01-CHT (4)

DETAIL B



COMPT ASM-SHOWER, EXTERIOR (4)
 106217-01-CHT
 EXTR
 2754-51-005 (2)
 SCREW
 G39-08-12B (4)

DETAIL C



VIEW D-D (SINGLE CONTROL W/PURIFIER) ITASCA

TITLE: WATER SYSTEM INSTL	
30 NET SCALE DRAWING	DATE
SHEET 3 OF 3	1.1
114245	