

- SINK 104113-01-000
- STRAINER 92303-01-000
- SEALER 69640-01-000
- RETAINER 106497-01-000(2)
- 105497-02-000(4)
- SCREW 667-06-10U(22)

- SHOWER INSTL-ENCLOSURE 105628-01-000
- STRAINER 66729-01-000
- SEALER 69640-01-000
- NUT 66435-01-000
- WASHER 69735-01-000
- TAILPIECE 11069-06-000

- TANK-HOLDING, 33 GAL 117580-03-000
- PLATFORM ASM-HOLDING TANK 118286-02-XXX

- ADAPTER 109571-02-000

- BRACKET 94756-05-000
- BOL. C18-05-40A(2)
- NUT D39-05-00B(4)
- BRACKET-SUPPORT 111316-02-000

- SEALANT SCREW 667-10-12G

- CSA ONLY
- A-8
- P-2
- P-3

- STRAP 8406-01-000(2)

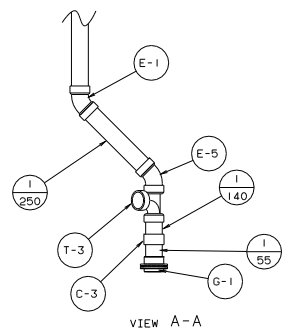
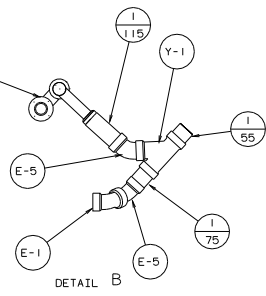
TRIM P-TRAP TO FIT.

SECURE VENT TUBES TO FLOOR WITH BRACKET 95061-01-000(2), CLAMP 62401-02-000, PLATE COVER 94346-03-000, SCREW 667-10-12B(2), AND STAPLE 5403-03-000.

VENT PIPE MUST PROJECT 51 MM MIN AND 63.5 MM MAX ABOVE ROOF FOR PROPER FIT AND FUNCTION.

SEE DWG 61607-01-000 FOR INSTL OF GROMMETS.

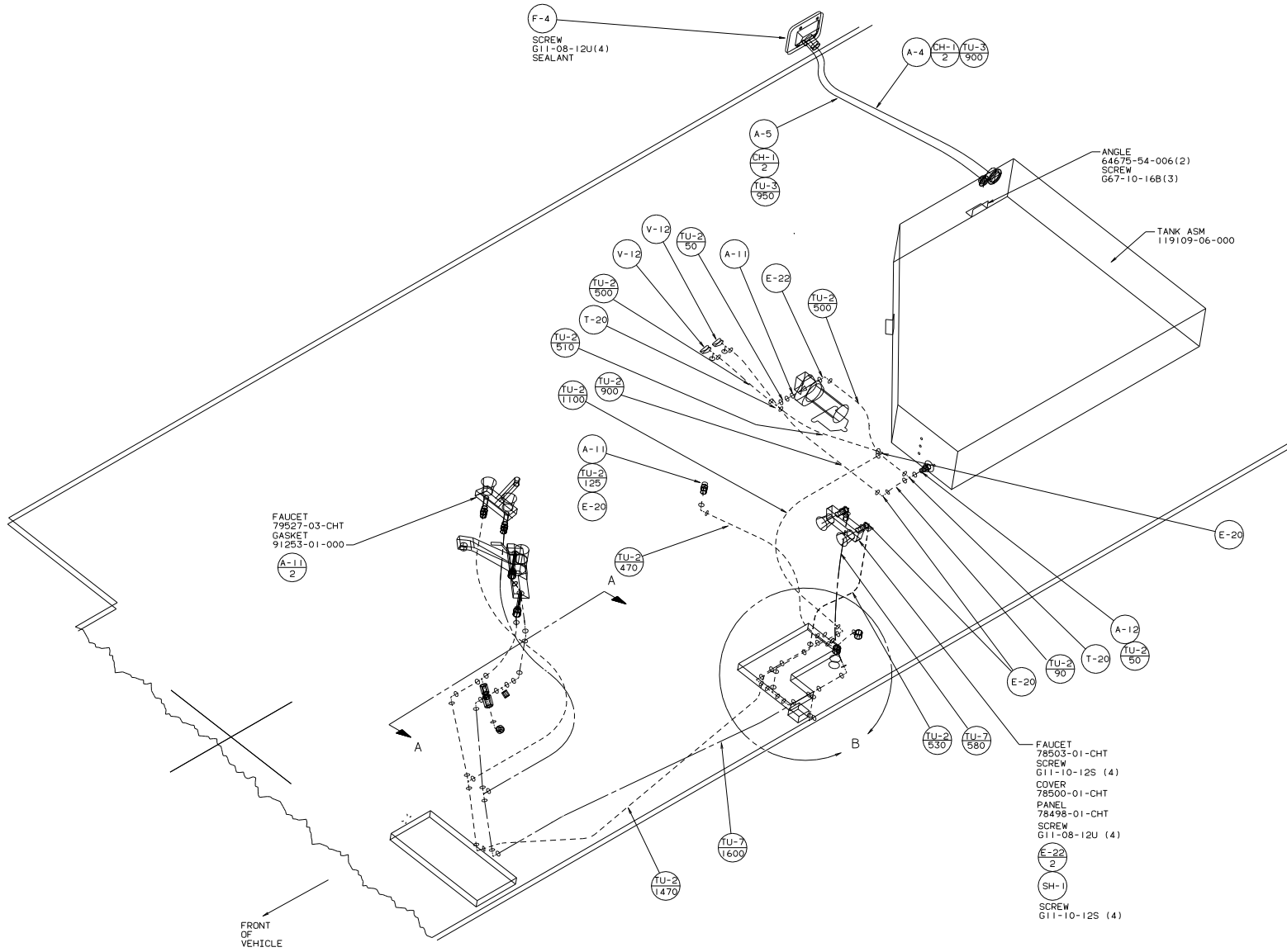
SEAL ALL AROUND SHOWER WITH SILICONE.



FOR DRAINAGE CALLOUTS SEE DWG NO. 116229-01-000

- FOR CAN UNITS EACH HOLDING TANK SHALL HAVE A CSA APPROVAL STAMPED NEAR THE IAMPO APPROVAL.
- ALL EXTERIOR OPENINGS AROUND PIPE TO BE SEALED WITH 110744-01-000.
- ALL PIPE AND FITTINGS TO BE ASSEMBLED WITH SOLVENT 4020-01-000.
- SLOPE OF TRAP ARM MUST BE 6 PER 305.
- SLOPE OF HORIZONTAL PIPING TO BE 6 PER 305 MINIMUM.

WINNEDAGO		96 429W0
DATE	SCALE	TITLE
429W06	1:1	DRAINAGE SYSTEM INSTL
SHEET	OF	DWG NO.
1	1	118967
REF: 118444		



FAUCET  
79527-03-CHT  
GASKET  
91253-01-000  
A-11  
2

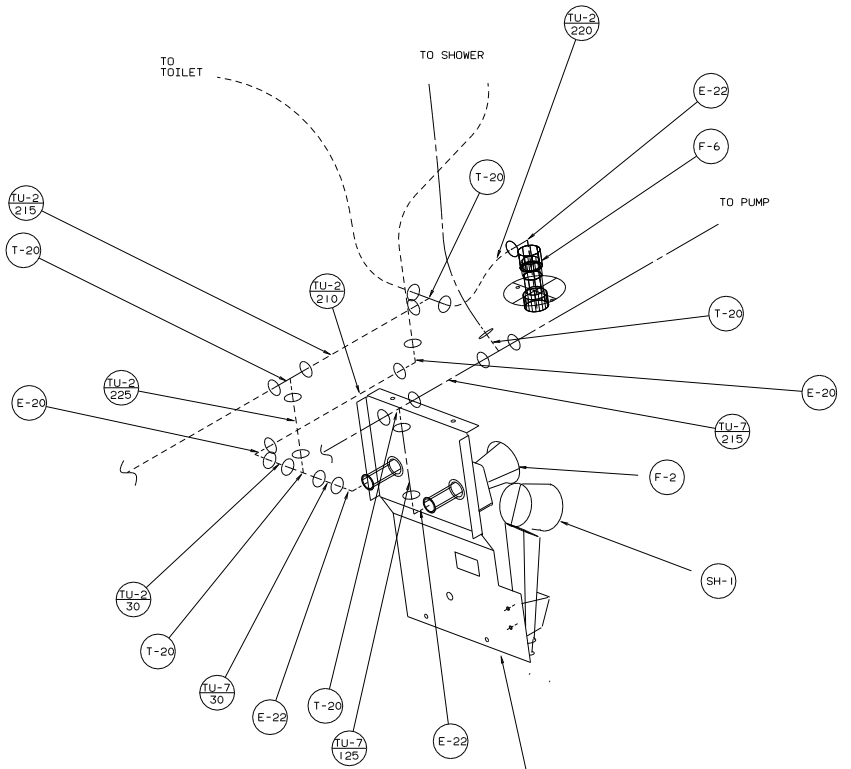
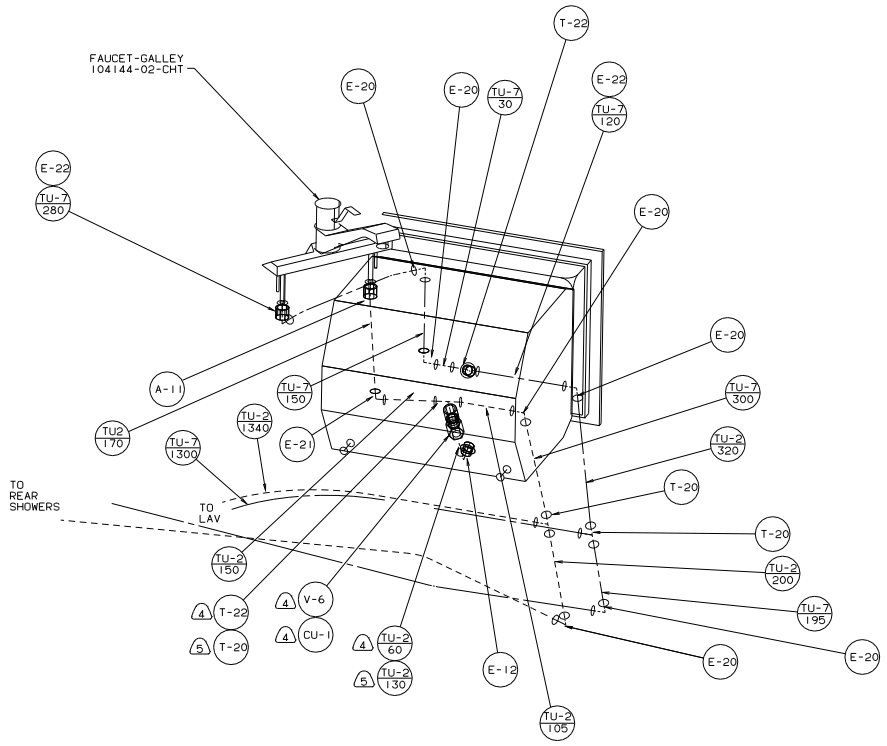
FAUCET  
78503-01-CHT  
SCREW  
G11-10-12S (4)  
COVER  
78500-01-CHT  
PANEL  
78498-01-CHT  
SCREW  
G11-08-12U (4)  
E-22  
2  
SH-1  
SCREW  
G11-10-12S (4)

LEGEND	
HOT	-----
COLD	-----

- NOTES:
- ⑤ USE WITHOUT MOTOR AID.
  - ④ USE WITH MOTOR AID.
  - 3. ALL TUBING TO BE SECURED AT 1200 INTERVALS MAX WITH CLAMP 10495-01-000 OR CLIP 91951-01-000 AND SCREW G67-10-12B.
  - 2. TUBING TO BE INSTALLED WITH SUFFICIENT SLOPE TO PROVIDE DRAINAGE TO NEAREST VALVE.
  - 1. PLASTIC FITTINGS TO BE SEALED WITH SEALANT 84456-01-000.

X-X FOR WATER CALLOUTS SEE DWG NO. 116230-01-000

WINNEBAGO		96 431W0
DATE	UNSPECIFIED TOLERANCES ARE:	MATERIAL:
CHG	WHOLE DIM (IN)	1/4
REV	ONE-PLACE (IN.X1)	1/16
REV	TWO-PLACE (IN.XXX)	1/32
REV	ANGLE	1/64
REV	THIRD ANGLE PROJECTION	
LANE NO. 431W06	TITLE: WATER SYSTEM INSTL	
DWG NO. 118520	SHEET 1 OF 2	121532



TITLE: WATER SYSTEM INSTL		DATE: 11/11/09
30 MIL SCALE DRAWING	SHEET 2 OF 2	REV 1
		NO 121532