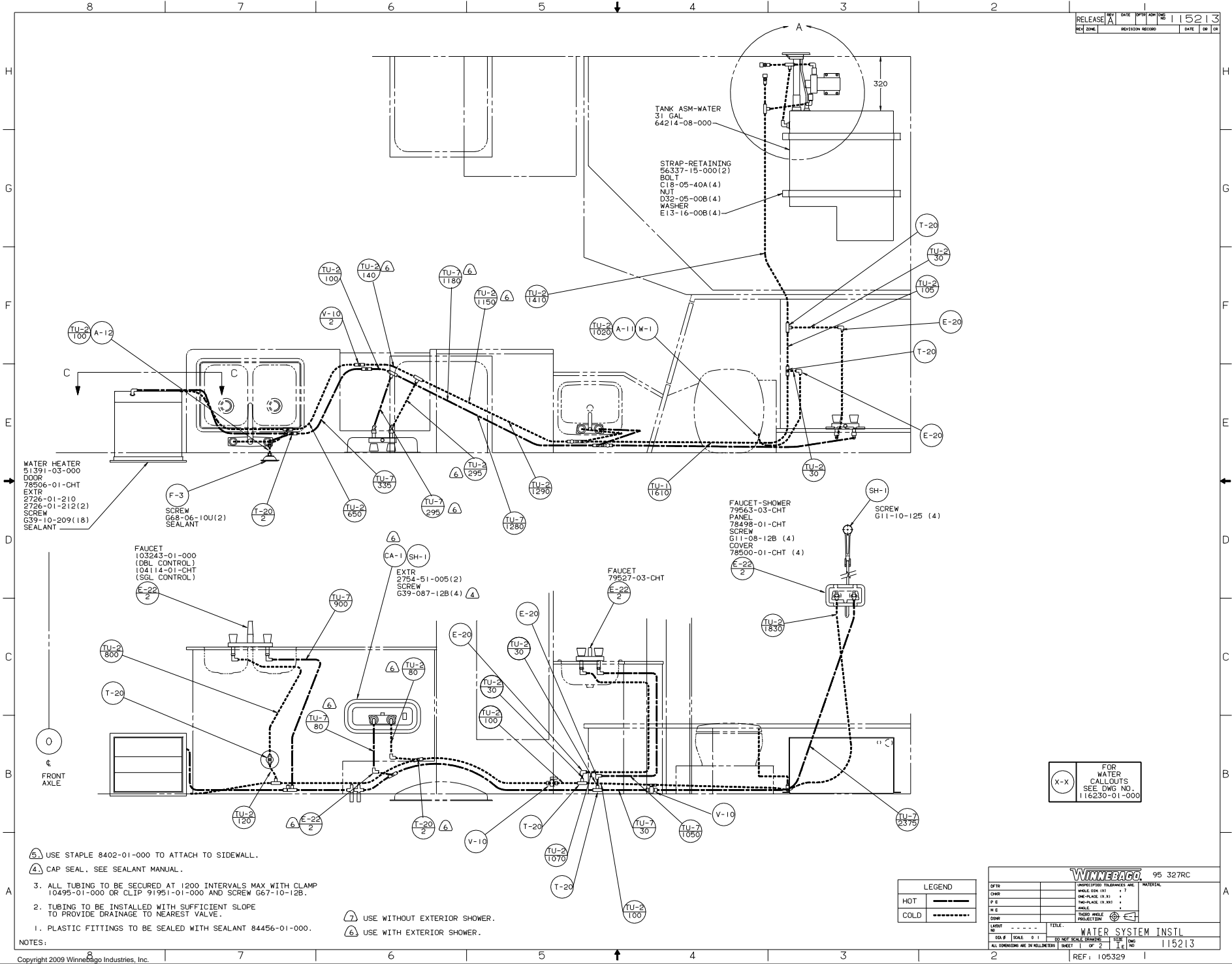


- 9. VENT PIPE MUST PROJECT 51 MM MIN AND 63.5 MM MAX ABOVE ROOF FOR PROPER FIT AND FUNCTION.
  - 8. SEE DWG 61607-01-000 FOR INSTL OF GROMMET.
  - 7. SEAL ALL AROUND SHOWER WITH SILICONE 78474-01-CHT.
  - 6. FOR CAN UNITS EACH HOLDING TANK SHALL HAVE A CSA APPROVAL STAMPED NEAR THE IAPMO APPROVAL.
  - 5. EXPOSED PIPE ABOVE ROOF TO BE PAINTED 37163-01-000.
  - 4. ALL EXTERIOR OPENINGS AROUND PIPE TO BE SEALED.
  - 3. ALL PIPE AND FITTINGS TO BE ASSEMBLED WITH SOLVENT 4020-01-000.
  - 2. SLOPE OF TRAP ARM MUST BE 6 PER 300.
  - 1. SLOPE OF HORIZONTAL PIPING TO BE 6 PER 305 MIN.
- (10) NOT USED ON CANADIAN UNITS.
  - (11) TRIM P-TRAP EXTENSION TO FIT.
  - (10) SECURE VENT TUBES TO FLOOR.

(X-X) FOR DRAINAGE CALLOUTS SEE DWG NO. 116229-01-000

WINNEBAGO		92 W/1F527RC
DATE	UNSPECIFIED TOLERANCES ARE:	MATERIAL:
CHG#	WHOLE DIM (IN)	
REV	ONE-PLACE (IN.X1)	
REV	TWO-PLACE (IN.XXX)	
REV	THREE-PLACE (IN.XXXX)	
REV	FOUR-PLACE (IN.XXXXX)	
REV	FIVE-PLACE (IN.XXXXXX)	
REV	SIX-PLACE (IN.XXXXXXX)	
REV	SEVEN-PLACE (IN.XXXXXXXX)	
REV	EIGHT-PLACE (IN.XXXXXXXXX)	
REV	NINE-PLACE (IN.XXXXXXXXXX)	
REV	TEN-PLACE (IN.XXXXXXXXXXX)	
REV	ELEVEN-PLACE (IN.XXXXXXXXXXX)	
REV	TWELVE-PLACE (IN.XXXXXXXXXXX)	
REV	THIRTEEN-PLACE (IN.XXXXXXXXXXX)	
REV	FOURTEEN-PLACE (IN.XXXXXXXXXXX)	
REV	FIFTEEN-PLACE (IN.XXXXXXXXXXX)	
REV	SIXTEEN-PLACE (IN.XXXXXXXXXXX)	
REV	SEVENTEEN-PLACE (IN.XXXXXXXXXXX)	
REV	EIGHTEEN-PLACE (IN.XXXXXXXXXXX)	
REV	NINETEEN-PLACE (IN.XXXXXXXXXXX)	
REV	TWENTY-PLACE (IN.XXXXXXXXXXX)	
REV	TWENTY-ONE-PLACE (IN.XXXXXXXXXXX)	
REV	TWENTY-TWO-PLACE (IN.XXXXXXXXXXX)	
REV	TWENTY-THREE-PLACE (IN.XXXXXXXXXXX)	
REV	TWENTY-FOUR-PLACE (IN.XXXXXXXXXXX)	
REV	TWENTY-FIVE-PLACE (IN.XXXXXXXXXXX)	
REV	TWENTY-SIX-PLACE (IN.XXXXXXXXXXX)	
REV	TWENTY-SEVEN-PLACE (IN.XXXXXXXXXXX)	
REV	TWENTY-EIGHT-PLACE (IN.XXXXXXXXXXX)	
REV	TWENTY-NINE-PLACE (IN.XXXXXXXXXXX)	
REV	THIRTY-PLACE (IN.XXXXXXXXXXX)	
REV	THIRTY-ONE-PLACE (IN.XXXXXXXXXXX)	
REV	THIRTY-TWO-PLACE (IN.XXXXXXXXXXX)	
REV	THIRTY-THREE-PLACE (IN.XXXXXXXXXXX)	
REV	THIRTY-FOUR-PLACE (IN.XXXXXXXXXXX)	
REV	THIRTY-FIVE-PLACE (IN.XXXXXXXXXXX)	
REV	THIRTY-SIX-PLACE (IN.XXXXXXXXXXX)	
REV	THIRTY-SEVEN-PLACE (IN.XXXXXXXXXXX)	
REV	THIRTY-EIGHT-PLACE (IN.XXXXXXXXXXX)	
REV	THIRTY-NINE-PLACE (IN.XXXXXXXXXXX)	
REV	FOURTY-PLACE (IN.XXXXXXXXXXX)	
REV	FOURTY-ONE-PLACE (IN.XXXXXXXXXXX)	
REV	FOURTY-TWO-PLACE (IN.XXXXXXXXXXX)	
REV	FOURTY-THREE-PLACE (IN.XXXXXXXXXXX)	
REV	FOURTY-FOUR-PLACE (IN.XXXXXXXXXXX)	
REV	FOURTY-FIVE-PLACE (IN.XXXXXXXXXXX)	
REV	FOURTY-SIX-PLACE (IN.XXXXXXXXXXX)	
REV	FOURTY-SEVEN-PLACE (IN.XXXXXXXXXXX)	
REV	FOURTY-EIGHT-PLACE (IN.XXXXXXXXXXX)	
REV	FOURTY-NINE-PLACE (IN.XXXXXXXXXXX)	
REV	FIFTY-PLACE (IN.XXXXXXXXXXX)	
REV	FIFTY-ONE-PLACE (IN.XXXXXXXXXXX)	
REV	FIFTY-TWO-PLACE (IN.XXXXXXXXXXX)	
REV	FIFTY-THREE-PLACE (IN.XXXXXXXXXXX)	
REV	FIFTY-FOUR-PLACE (IN.XXXXXXXXXXX)	
REV	FIFTY-FIVE-PLACE (IN.XXXXXXXXXXX)	
REV	FIFTY-SIX-PLACE (IN.XXXXXXXXXXX)	
REV	FIFTY-SEVEN-PLACE (IN.XXXXXXXXXXX)	
REV	FIFTY-EIGHT-PLACE (IN.XXXXXXXXXXX)	
REV	FIFTY-NINE-PLACE (IN.XXXXXXXXXXX)	
REV	SIXTY-PLACE (IN.XXXXXXXXXXX)	
REV	SIXTY-ONE-PLACE (IN.XXXXXXXXXXX)	
REV	SIXTY-TWO-PLACE (IN.XXXXXXXXXXX)	
REV	SIXTY-THREE-PLACE (IN.XXXXXXXXXXX)	
REV	SIXTY-FOUR-PLACE (IN.XXXXXXXXXXX)	
REV	SIXTY-FIVE-PLACE (IN.XXXXXXXXXXX)	
REV	SIXTY-SIX-PLACE (IN.XXXXXXXXXXX)	
REV	SIXTY-SEVEN-PLACE (IN.XXXXXXXXXXX)	
REV	SIXTY-EIGHT-PLACE (IN.XXXXXXXXXXX)	
REV	SIXTY-NINE-PLACE (IN.XXXXXXXXXXX)	
REV	SEVENTY-PLACE (IN.XXXXXXXXXXX)	
REV	SEVENTY-ONE-PLACE (IN.XXXXXXXXXXX)	
REV	SEVENTY-TWO-PLACE (IN.XXXXXXXXXXX)	
REV	SEVENTY-THREE-PLACE (IN.XXXXXXXXXXX)	
REV	SEVENTY-FOUR-PLACE (IN.XXXXXXXXXXX)	
REV	SEVENTY-FIVE-PLACE (IN.XXXXXXXXXXX)	
REV	SEVENTY-SIX-PLACE (IN.XXXXXXXXXXX)	
REV	SEVENTY-SEVEN-PLACE (IN.XXXXXXXXXXX)	
REV	SEVENTY-EIGHT-PLACE (IN.XXXXXXXXXXX)	
REV	SEVENTY-NINE-PLACE (IN.XXXXXXXXXXX)	
REV	EIGHTY-PLACE (IN.XXXXXXXXXXX)	
REV	EIGHTY-ONE-PLACE (IN.XXXXXXXXXXX)	
REV	EIGHTY-TWO-PLACE (IN.XXXXXXXXXXX)	
REV	EIGHTY-THREE-PLACE (IN.XXXXXXXXXXX)	
REV	EIGHTY-FOUR-PLACE (IN.XXXXXXXXXXX)	
REV	EIGHTY-FIVE-PLACE (IN.XXXXXXXXXXX)	
REV	EIGHTY-SIX-PLACE (IN.XXXXXXXXXXX)	
REV	EIGHTY-SEVEN-PLACE (IN.XXXXXXXXXXX)	
REV	EIGHTY-EIGHT-PLACE (IN.XXXXXXXXXXX)	
REV	EIGHTY-NINE-PLACE (IN.XXXXXXXXXXX)	
REV	NINETY-PLACE (IN.XXXXXXXXXXX)	
REV	NINETY-ONE-PLACE (IN.XXXXXXXXXXX)	
REV	NINETY-TWO-PLACE (IN.XXXXXXXXXXX)	
REV	NINETY-THREE-PLACE (IN.XXXXXXXXXXX)	
REV	NINETY-FOUR-PLACE (IN.XXXXXXXXXXX)	
REV	NINETY-FIVE-PLACE (IN.XXXXXXXXXXX)	
REV	NINETY-SIX-PLACE (IN.XXXXXXXXXXX)	
REV	NINETY-SEVEN-PLACE (IN.XXXXXXXXXXX)	
REV	NINETY-EIGHT-PLACE (IN.XXXXXXXXXXX)	
REV	NINETY-NINE-PLACE (IN.XXXXXXXXXXX)	
REV	HUNDRED-PLACE (IN.XXXXXXXXXXX)	
REV	HUNDRED-ONE-PLACE (IN.XXXXXXXXXXX)	
REV	HUNDRED-TWO-PLACE (IN.XXXXXXXXXXX)	
REV	HUNDRED-THREE-PLACE (IN.XXXXXXXXXXX)	
REV	HUNDRED-FOUR-PLACE (IN.XXXXXXXXXXX)	
REV	HUNDRED-FIVE-PLACE (IN.XXXXXXXXXXX)	
REV	HUNDRED-SIX-PLACE (IN.XXXXXXXXXXX)	
REV	HUNDRED-SEVEN-PLACE (IN.XXXXXXXXXXX)	
REV	HUNDRED-EIGHT-PLACE (IN.XXXXXXXXXXX)	
REV	HUNDRED-NINE-PLACE (IN.XXXXXXXXXXX)	
REV	ONE HUNDRED-PLACE (IN.XXXXXXXXXXX)	
REV	ONE HUNDRED-ONE-PLACE (IN.XXXXXXXXXXX)	
REV	ONE HUNDRED-TWO-PLACE (IN.XXXXXXXXXXX)	
REV	ONE HUNDRED-THREE-PLACE (IN.XXXXXXXXXXX)	
REV	ONE HUNDRED-FOUR-PLACE (IN.XXXXXXXXXXX)	
REV	ONE HUNDRED-FIVE-PLACE (IN.XXXXXXXXXXX)	
REV	ONE HUNDRED-SIX-PLACE (IN.XXXXXXXXXXX)	
REV	ONE HUNDRED-SEVEN-PLACE (IN.XXXXXXXXXXX)	
REV	ONE HUNDRED-EIGHT-PLACE (IN.XXXXXXXXXXX)	
REV	ONE HUNDRED-NINE-PLACE (IN.XXXXXXXXXXX)	
REV	TWO HUNDRED-PLACE (IN.XXXXXXXXXXX)	
REV	TWO HUNDRED-ONE-PLACE (IN.XXXXXXXXXXX)	
REV	TWO HUNDRED-TWO-PLACE (IN.XXXXXXXXXXX)	
REV	TWO HUNDRED-THREE-PLACE (IN.XXXXXXXXXXX)	
REV	TWO HUNDRED-FOUR-PLACE (IN.XXXXXXXXXXX)	
REV	TWO HUNDRED-FIVE-PLACE (IN.XXXXXXXXXXX)	
REV	TWO HUNDRED-SIX-PLACE (IN.XXXXXXXXXXX)	
REV	TWO HUNDRED-SEVEN-PLACE (IN.XXXXXXXXXXX)	
REV	TWO HUNDRED-EIGHT-PLACE (IN.XXXXXXXXXXX)	
REV	TWO HUNDRED-NINE-PLACE (IN.XXXXXXXXXXX)	
REV	THREE HUNDRED-PLACE (IN.XXXXXXXXXXX)	
REV	THREE HUNDRED-ONE-PLACE (IN.XXXXXXXXXXX)	
REV	THREE HUNDRED-TWO-PLACE (IN.XXXXXXXXXXX)	
REV	THREE HUNDRED-THREE-PLACE (IN.XXXXXXXXXXX)	
REV	THREE HUNDRED-FOUR-PLACE (IN.XXXXXXXXXXX)	
REV	THREE HUNDRED-FIVE-PLACE (IN.XXXXXXXXXXX)	
REV	THREE HUNDRED-SIX-PLACE (IN.XXXXXXXXXXX)	
REV	THREE HUNDRED-SEVEN-PLACE (IN.XXXXXXXXXXX)	
REV	THREE HUNDRED-EIGHT-PLACE (IN.XXXXXXXXXXX)	
REV	THREE HUNDRED-NINE-PLACE (IN.XXXXXXXXXXX)	
REV	FOUR HUNDRED-PLACE (IN.XXXXXXXXXXX)	
REV	FOUR HUNDRED-ONE-PLACE (IN.XXXXXXXXXXX)	
REV	FOUR HUNDRED-TWO-PLACE (IN.XXXXXXXXXXX)	
REV	FOUR HUNDRED-THREE-PLACE (IN.XXXXXXXXXXX)	
REV	FOUR HUNDRED-FOUR-PLACE (IN.XXXXXXXXXXX)	
REV	FOUR HUNDRED-FIVE-PLACE (IN.XXXXXXXXXXX)	
REV	FOUR HUNDRED-SIX-PLACE (IN.XXXXXXXXXXX)	
REV	FOUR HUNDRED-SEVEN-PLACE (IN.XXXXXXXXXXX)	
REV	FOUR HUNDRED-EIGHT-PLACE (IN.XXXXXXXXXXX)	
REV	FOUR HUNDRED-NINE-PLACE (IN.XXXXXXXXXXX)	
REV	FIVE HUNDRED-PLACE (IN.XXXXXXXXXXX)	
REV	FIVE HUNDRED-ONE-PLACE (IN.XXXXXXXXXXX)	
REV	FIVE HUNDRED-TWO-PLACE (IN.XXXXXXXXXXX)	
REV	FIVE HUNDRED-THREE-PLACE (IN.XXXXXXXXXXX)	
REV	FIVE HUNDRED-FOUR-PLACE (IN.XXXXXXXXXXX)	
REV	FIVE HUNDRED-FIVE-PLACE (IN.XXXXXXXXXXX)	
REV	FIVE HUNDRED-SIX-PLACE (IN.XXXXXXXXXXX)	
REV	FIVE HUNDRED-SEVEN-PLACE (IN.XXXXXXXXXXX)	
REV	FIVE HUNDRED-EIGHT-PLACE (IN.XXXXXXXXXXX)	
REV	FIVE HUNDRED-NINE-PLACE (IN.XXXXXXXXXXX)	
REV	SIX HUNDRED-PLACE (IN.XXXXXXXXXXX)	
REV	SIX HUNDRED-ONE-PLACE (IN.XXXXXXXXXXX)	
REV	SIX HUNDRED-TWO-PLACE (IN.XXXXXXXXXXX)	
REV	SIX HUNDRED-THREE-PLACE (IN.XXXXXXXXXXX)	
REV	SIX HUNDRED-FOUR-PLACE (IN.XXXXXXXXXXX)	
REV	SIX HUNDRED-FIVE-PLACE (IN.XXXXXXXXXXX)	
REV	SIX HUNDRED-SIX-PLACE (IN.XXXXXXXXXXX)	
REV	SIX HUNDRED-SEVEN-PLACE (IN.XXXXXXXXXXX)	
REV	SIX HUNDRED-EIGHT-PLACE (IN.XXXXXXXXXXX)	
REV	SIX HUNDRED-NINE-PLACE (IN.XXXXXXXXXXX)	
REV	SEVEN HUNDRED-PLACE (IN.XXXXXXXXXXX)	
REV	SEVEN HUNDRED-ONE-PLACE (IN.XXXXXXXXXXX)	
REV	SEVEN HUNDRED-TWO-PLACE (IN.XXXXXXXXXXX)	
REV	SEVEN HUNDRED-THREE-PLACE (IN.XXXXXXXXXXX)	
REV	SEVEN HUNDRED-FOUR-PLACE (IN.XXXXXXXXXXX)	
REV	SEVEN HUNDRED-FIVE-PLACE (IN.XXXXXXXXXXX)	
REV	SEVEN HUNDRED-SIX-PLACE (IN.XXXXXXXXXXX)	
REV	SEVEN HUNDRED-SEVEN-PLACE (IN.XXXXXXXXXXX)	
REV	SEVEN HUNDRED-EIGHT-PLACE (IN.XXXXXXXXXXX)	
REV	SEVEN HUNDRED-NINE-PLACE (IN.XXXXXXXXXXX)	
REV	EIGHT HUNDRED-PLACE (IN.XXXXXXXXXXX)	
REV	EIGHT HUNDRED-ONE-PLACE (IN.XXXXXXXXXXX)	
REV	EIGHT HUNDRED-TWO-PLACE (IN.XXXXXXXXXXX)	
REV	EIGHT HUNDRED-THREE-PLACE (IN.XXXXXXXXXXX)	
REV	EIGHT HUNDRED-FOUR-PLACE (IN.XXXXXXXXXXX)	
REV	EIGHT HUNDRED-FIVE-PLACE (IN.XXXXXXXXXXX)	
REV	EIGHT HUNDRED-SIX-PLACE (IN.XXXXXXXXXXX)	
REV	EIGHT HUNDRED-SEVEN-PLACE (IN.XXXXXXXXXXX)	
REV	EIGHT HUNDRED-EIGHT-PLACE (IN.XXXXXXXXXXX)	
REV	EIGHT HUNDRED-NINE-PLACE (IN.XXXXXXXXXXX)	
REV	NINE HUNDRED-PLACE (IN.XXXXXXXXXXX)	
REV	NINE HUNDRED-ONE-PLACE (IN.XXXXXXXXXXX)	
REV	NINE HUNDRED-TWO-PLACE (IN.XXXXXXXXXXX)	
REV	NINE HUNDRED-THREE-PLACE (IN.XXXXXXXXXXX)	
REV	NINE HUNDRED-FOUR-PLACE (IN.XXXXXXXXXXX)	
REV	NINE HUNDRED-FIVE-PLACE (IN.XXXXXXXXXXX)	
REV	NINE HUNDRED-SIX-PLACE (IN.XXXXXXXXXXX)	
REV	NINE HUNDRED-SEVEN-PLACE (IN.XXXXXXXXXXX)	
REV	NINE HUNDRED-EIGHT-PLACE (IN.XXXXXXXXXXX)	
REV	NINE HUNDRED-NINE-PLACE (IN.XXXXXXXXXXX)	
REV	TEN HUNDRED-PLACE (IN.XXXXXXXXXXX)	
REV	TEN HUNDRED-ONE-PLACE (IN.XXXXXXXXXXX)	
REV	TEN HUNDRED-TWO-PLACE (IN.XXXXXXXXXXX)	
REV	TEN HUNDRED-THREE-PLACE (IN.XXXXXXXXXXX)	
REV	TEN HUNDRED-FOUR-PLACE (IN.XXXXXXXXXXX)	
REV	TEN HUNDRED-FIVE-PLACE (IN.XXXXXXXXXXX)	
REV	TEN HUNDRED-SIX-PLACE (IN.XXXXXXXXXXX)	
REV	TEN HUNDRED-SEVEN-PLACE (IN.XXXXXXXXXXX)	
REV	TEN HUNDRED-EIGHT-PLACE (IN.XXXXXXXXXXX)	
REV	TEN HUNDRED-NINE-PLACE (IN.XXXXXXXXXXX)	
REV	ELEVEN HUNDRED-PLACE (IN.XXXXXXXXXXX)	
REV	ELEVEN HUNDRED-ONE-PLACE (IN.XXXXXXXXXXX)	
REV	ELEVEN HUNDRED-TWO-PLACE (IN.XXXXXXXXXXX)	
REV	ELEVEN HUNDRED-THREE-PLACE (IN.XXXXXXXXXXX)	
REV	ELEVEN HUNDRED-FOUR-PLACE (IN.XXXXXXXXXXX)	
REV	ELEVEN HUNDRED-FIVE-PLACE (IN.XXXXXXXXXXX)	
REV	ELEVEN HUNDRED-SIX-PLACE (IN.XXXXXXXXXXX)	
REV	ELEVEN HUNDRED-SEVEN-PLACE (IN.XXXXXXXXXXX)	
REV	ELEVEN HUNDRED-EIGHT-PLACE (IN.XXXXXXXXXXX)	
REV	ELEVEN HUNDRED-NINE-PLACE (IN.XXXXXXXXXXX)	
REV	TWELVE HUNDRED-PLACE (IN.XXXXXXXXXXX)	
REV	TWELVE HUNDRED-ONE-PLACE (IN.XXXXXXXXXXX)	
REV	TWELVE HUNDRED-TWO-PLACE (IN.XXXXXXXXXXX)	
REV	TWELVE HUNDRED-THREE-PLACE (IN.XXXXXXXXXXX)	
REV	TWELVE HUNDRED-FOUR-PLACE (IN.XXXXXXXXXXX)	
REV	TWELVE HUNDRED-FIVE-PLACE (IN.XXXXXXXXXXX)	
REV	TWELVE HUNDRED-SIX-PLACE (IN.XXXXXXXXXXX)	
REV	TWELVE HUNDRED-SEVEN-PLACE (IN.XXXXXXXXXXX)	
REV	TWELVE HUNDRED-EIGHT-PLACE (IN.XXXXXXXXXXX)	
REV	TWELVE HUNDRED-NINE-PLACE (IN.XXXXXXXXXXX)	
REV	THIRTY-THREE-PLACE (IN.XXXXXXXXXXX)	
REV	THIRTY-FOUR-PLACE (IN.XXXXXXXXXXX)	
REV	THIRTY-FIVE-PLACE (IN.XXXXXXXXXXX)	
REV	THIRTY-SIX-PLACE (IN.XXXXXXXXXXX)	
REV	THIRTY-SEVEN-PLACE (IN.XXXXXXXXXXX)	
REV	THIRTY-EIGHT-PLACE (IN.XXXXXXXXXXX)	
REV	THIRTY-NINE-PLACE (IN.XXXXXXXXXXX)	
REV	FOURTY-PLACE (IN.XXXXXXXXXXX)	
REV	FOURTY-ONE-PLACE (IN.XXXXXXXXXXX)	
REV	FOURTY-TWO-PLACE (IN.XXXXXXXXXXX)	
REV	FOURTY-THREE-PLACE (IN.XXXXXXXXXXX)	
REV	FOURTY-FOUR-PLACE (IN.XXXXXXXXXXX)	
REV	FOURTY-FIVE-PLACE (IN.XXXXXXXXXXX)	
REV	FOURTY-SIX-PLACE (IN.XXXXXXXXXXX)	
REV	FOURTY-SEVEN-PLACE (IN.XXXXXXXXXXX)	
REV	FOURTY-EIGHT-PLACE (IN.XXXXXXXXXXX)	
REV	FOURTY-NINE-PLACE (IN.XXXXXXXXXXX)	
REV	FIFTY-PLACE (IN.XXXXXXXXXXX)	
REV	FIFTY-ONE-PLACE (IN.XXXXXXXXXXX)	
REV	FIFTY-TWO-PLACE (IN.XXXXXXXXXXX)	
REV	FIFTY-THREE-PLACE (IN.XXXXXXXXXXX)	
REV	FIFTY-FOUR-PLACE (IN.XXXXXXXXXXX)	
REV	FIFTY-FIVE-PLACE (IN.XXXXXXXXXXX)	
REV	FIFTY-SIX-PLACE (IN.XXXXXXXXXXX)	
REV	FIFTY-SEVEN-PLACE (IN.XXXXXXXXXXX)	
REV	FIFTY-EIGHT-PLACE (IN.XXXXXXXXXXX)	
REV	FIFTY-NINE-PLACE (IN.XXXXXXXXXXX)	
REV	SIXTY-PLACE (IN.XXXXXXXXXXX)	
REV	SIXTY-ONE-PLACE (IN.XXXXXXXXXXX)	
REV	SIXTY-TWO-PLACE (IN.XXXXXXXXXXX)	
REV	SIXTY-THREE-PLACE (IN.XXXXXXXXXXX)	
REV	SIXTY-FOUR-PLACE (IN.XXXXXXXXXXX)	
REV	SIXTY-FIVE-PLACE (IN.XXXXXXXXXXX)	
REV	SIXTY-SIX-PLACE (IN.XXXXXXXXXXX)	
REV	SIXTY-SEVEN-PLACE (IN.XXXXXXXXXXX)	
REV	SIXTY-EIGHT-PLACE (IN.XXXXXXXXXXX)	
REV	SIXTY-NINE-PLACE (IN.XXXXXXXXXXX)	
REV	SEVENTY-PLACE (IN.XXXXXXXXXXX)	
REV	SEVENTY-ONE-PLACE (IN.XXXXXXXXXXX)	
REV	SEVENTY-TWO-PLACE (IN.XXXXXXXXXXX)	
REV	SEVENTY-THREE-PLACE (IN.XXXXXXXXXXX)	
REV	SEVENTY-FOUR-PLACE (IN.XXXXXXXXXXX)	
REV	SEVENTY-FIVE-PLACE (IN.XXXXXXXXXXX)	
REV	SEVENTY-SIX-PLACE (IN.XXXXXXXXXXX)	
REV	SEVENTY-SEVEN-PLACE (IN.XXXXXXXXXXX)	



TANK ASM-WATER  
 31 GAL  
 64214-08-000

STRAP-RETAINING  
 56337-15-000(2)  
 BOLT  
 C18-05-40A(4)  
 NUT  
 D32-05-00B(4)  
 WASHER  
 E13-16-00B(4)

WATER HEATER  
 51391-03-000  
 DOOR  
 78506-01-CHT  
 EXTR  
 2726-01-210  
 2726-01-212(2)  
 SCREW  
 G39-10-209(18)  
 SEALANT

FAUCET-SHOWER  
 79563-03-CHT  
 PANEL  
 78495-01-CHT  
 SCREW  
 G11-08-12B(4)  
 COVER  
 78500-01-CHT(4)

FAUCET  
 103243-01-000  
 (DBL CONTROL)  
 04114-01-CHT  
 (SGL CONTROL)

FAUCET  
 79527-03-CHT

EXTR  
 2754-51-005(2)  
 SCREW  
 G39-087-12B(4)

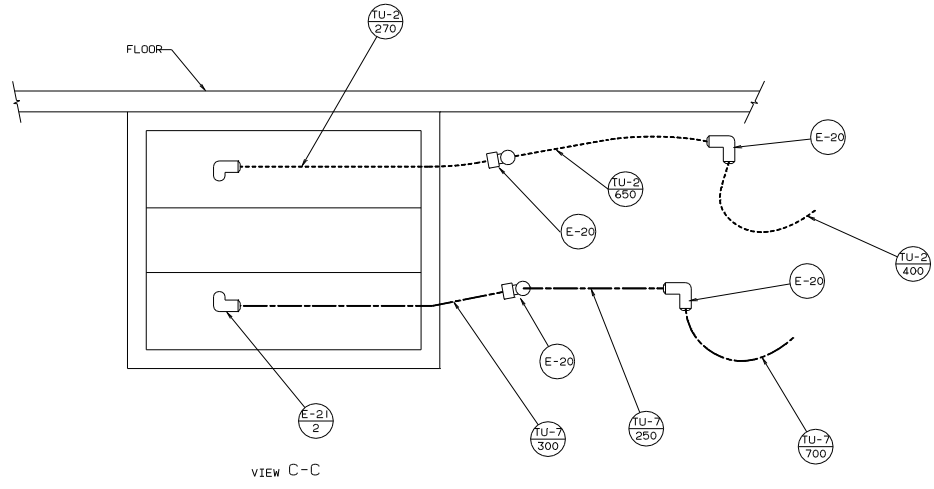
X-X FOR WATER CALLOUTS SEE DWG NO. 116230-01-000

LEGEND	
HOT	—————
COLD	-----

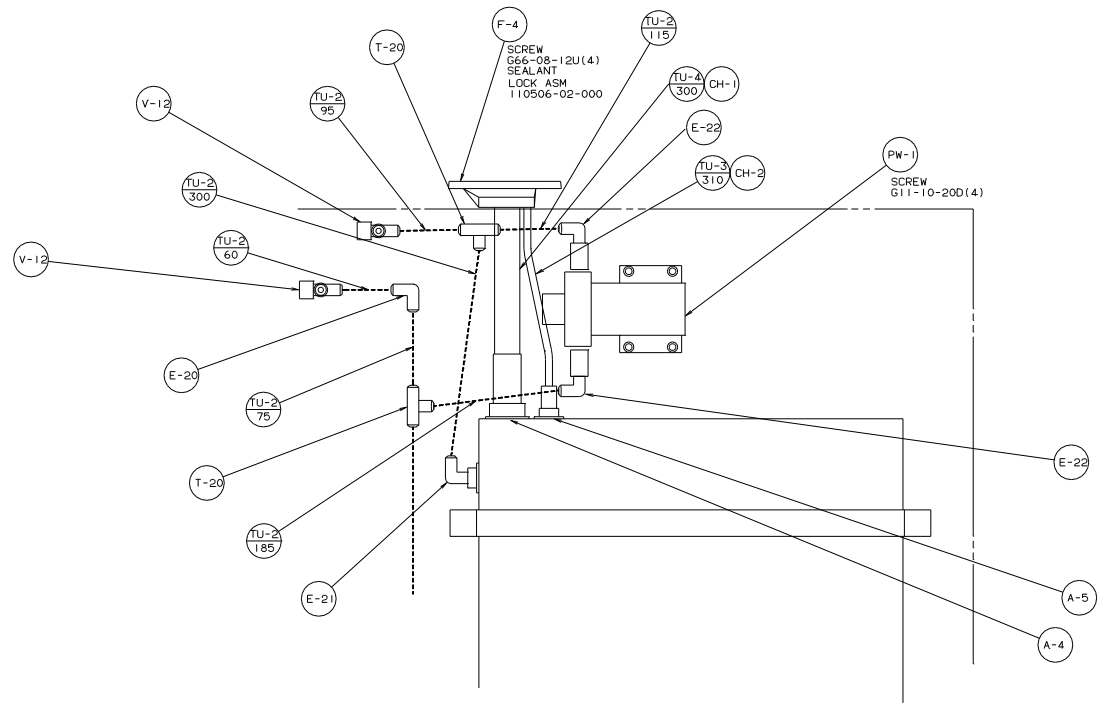
WINNEDAGO 95 32TRC		
QTY	UNSPECIFIED TOLERANCES ARE	MATERIAL
CHP	WHOLE OR 1/2"	1"
FR	ONE-PLACE 1/8"	1"
FR	TWO-PLACE 1/8"	1"
FR	WHOLE	1"
FR	TWO-PLACE	1"
FR	PRODUCTION	1"
TITLE: WATER SYSTEM INSTL		
REV #	SCALE	DATE
1	0 1	11/15/21
SHEET 1 OF 2		NO 115213

- ⑤ USE STAPLE 8402-01-000 TO ATTACH TO SIDEWALL.
- ④ CAP SEAL. SEE SEALANT MANUAL.
- 3. ALL TUBING TO BE SECURED AT 1200 INTERVALS MAX WITH CLAMP 10495-01-000 OR CLIP 91951-01-000 AND SCREW G67-10-12B.
- 2. TUBING TO BE INSTALLED WITH SUFFICIENT SLOPE TO PROVIDE DRAINAGE TO NEAREST VALVE.
- 1. PLASTIC FITTINGS TO BE SEALED WITH SEALANT 84456-01-000.

- ⑦ USE WITHOUT EXTERIOR SHOWER.
- ⑧ USE WITH EXTERIOR SHOWER.



VIEW C-C



DETAIL A

95 327RC

TITLE: WATER SYSTEM INSTL		DATE: 11/11/09
30 NET SCALE DRAWING	SHEET 2 OF 2	115213