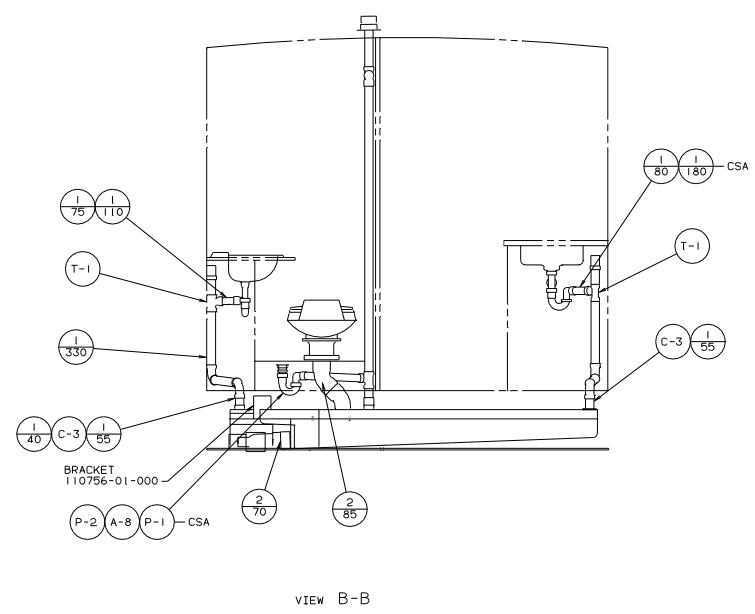


- NOTES:**
1. SLOPE OF HORIZONTAL PIPING TO BE 6 PER 300 MINIMUM.
 2. SLOPE OF TRAP MUST BE 6 PER 300 MINIMUM.
 3. ALL PIPE AND FITTINGS TO BE ASSEMBLED WITH SOLVENT 4020-01-000.
 4. FOR CANADIAN UNITS EACH HOLDING TANK SHALL HAVE A CSA APPROVAL STAMPED NEAR IAPMO APPROVAL.
 5. SEAL ALL AROUND SHOWER WITH SILICONE 78474-01-CHT.
- OPTIONAL TOILET.**
- SECURE VENT TUBES TO FLOOR.**
- VENT PIPE MUST BE PROJECTED 51 TO 64 MAXIMUM ABOVE ROOF FOR PROPER FIT AND FUNCTION.**
- SEE DRAWING 61607-01-000 FOR INSTALLATION OF GROMMET.**

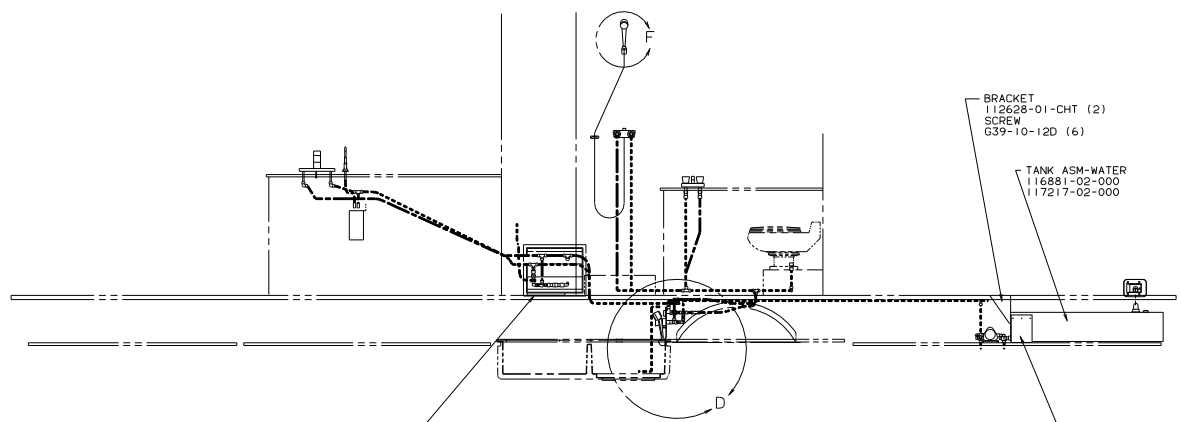
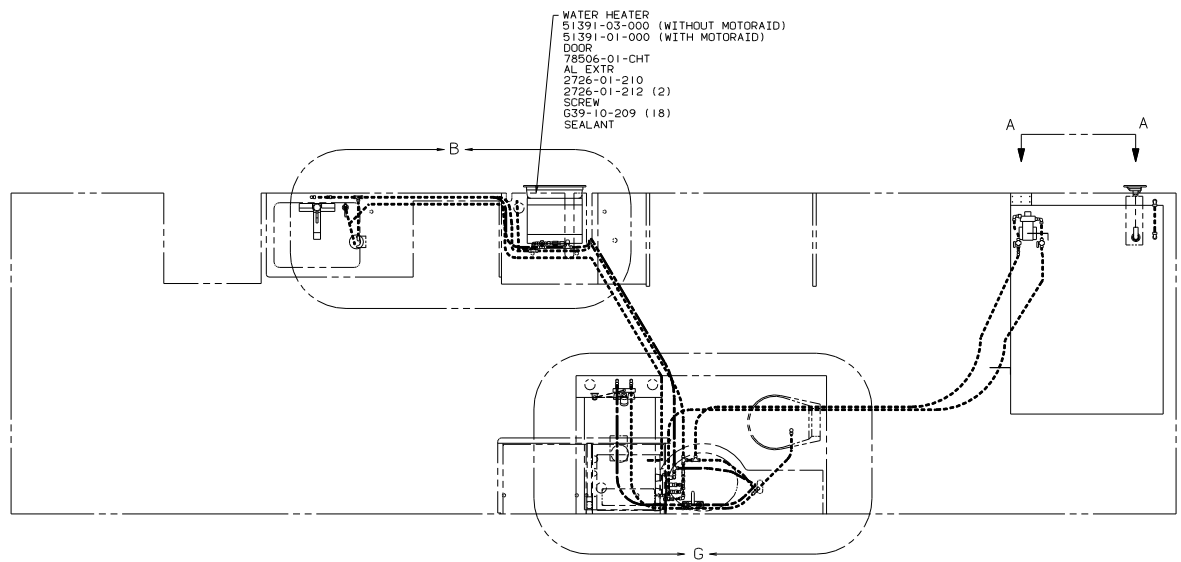


LAYOUT NO. M34R03		TITLE: DRAINAGE SYSTEM INSTL	94 M33R0
DIA #	SCALE	NO. SHEET	SHEET 1 OF 2
REF: 107359	1	111878	



VIEW B-B

TITLE: DRAINAGE SYSTEM INSTL	
30 NET SCALE DRAWING	FIG. NO. 1E
SHEET 2 OF 2	111878



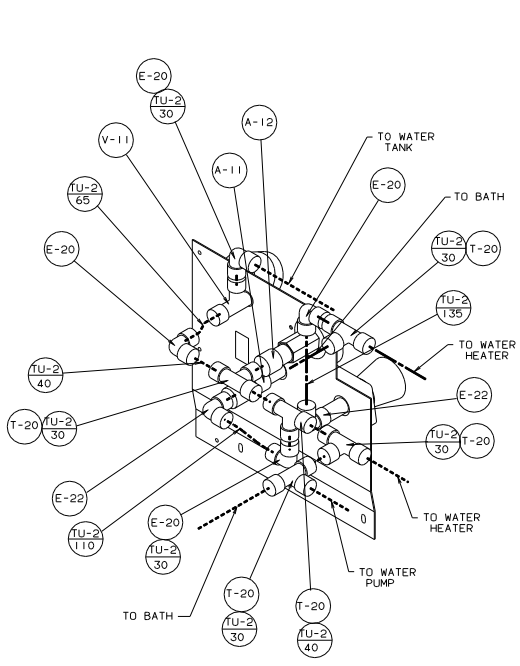
- ③ CLAMP MUST BE ON BARBS.
- ⑧ PRESS INTO FITTING AND THREAD INTO TANK.
- ⑦ USE WITHOUT MOTORAID.
- ⑥ USE WITH MOTORAID.
- ⑤ USE WITHOUT REFRIGERATOR ICEMAKER.
- ④ USE WITH REFRIGERATOR ICEMAKER.

3. ALL TUBING TO BE SECURED AT 1200 INTERVALS MAXIMUM WITH CLAMP 10495-01-000 OR CLIP 91951-01-000 AND SCREW G67-10-12B.
2. TUBING TO BE INSTALLED WITH SUFFICIENT SLOPE TO PROVIDE DRAINAGE TO NEAREST VALVE.
1. PLASTIC FITTINGS TO BE SEALED WITH SEALANT 84456-01-000.

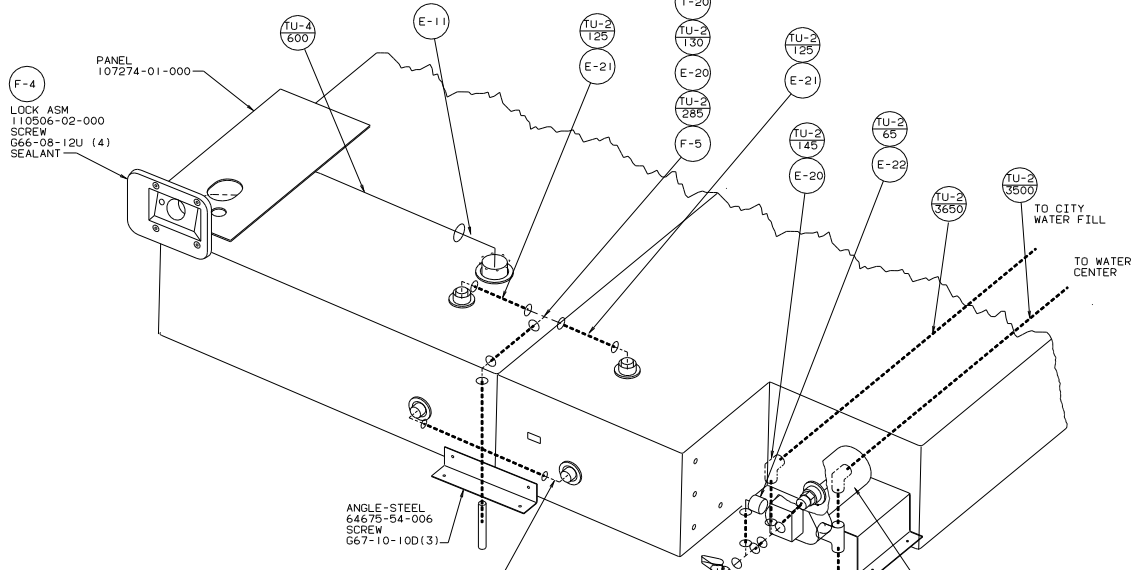
FOR WATER CALLOUTS SEE DWG NO. 116230-01-000

LEGEND	
HOT	-----
COLD	-----

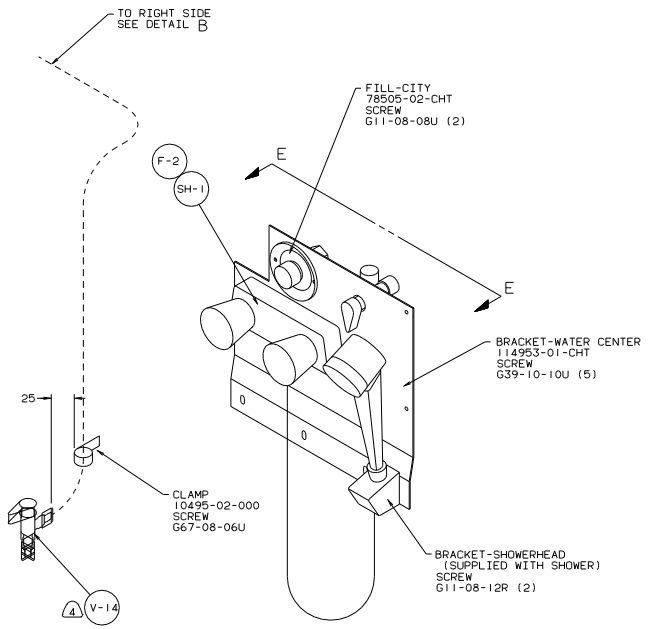
WINNEAGO		95 M33R0
DATE	UNSPECIFIED TOLERANCES ARE:	MATERIAL:
CHG#	WHOLE DIM (IN)	1/4
REV	ONE-PLACE (IN.X1)	.
REV	TWO-PLACE (IN.XXX)	.
REV	ANGLE	.
REV	THIRD ANGLE PROJECTION	☺
LANE#	M33R05	TITLE: WATER SYSTEM INSTL
DWG #	SCALE: NONE	DWG NO: 115034
ALL DIMENSIONS ARE IN MILLIMETERS	SHEET 1 OF 3	DATE: 8/18/02



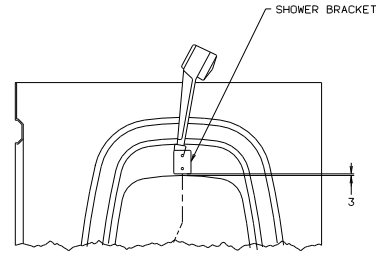
VIEW E-E



VIEW A-A



DETAIL D



DETAIL F

