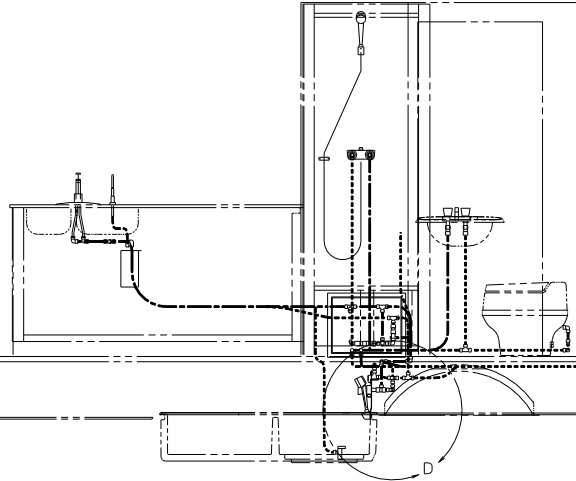


- WATER HEATER
- 51391-03-000 (WITHOUT MOTOROID)
- 51391-01-000 (WITH MOTOROID)
- 111129-01-000 (A)
- DOOR
- 78506-01-CHT
- GARNISH
- 2726-01-210
- 2726-01-212 (2)
- SCREW
- G39-10-169 (18)
- SEALANT
- 69637-01-000



- BRACKET
- 112628-01-000
- SCREW
- G39-10-12D (6)
- TANK ASM-WATER
- 109392-03-000
- 109392-06-000 (A)
- PLATFORM ASM-WATER TANK
- 107279-01-000

FRONT AXLE

FRONT AXLE

- (A) USE WITH W. I. E. EXPORT PREP PACKAGE.
 - (B) USE WITH MOTOROID.
 - (C) USE WITHOUT MOTOROID.
 - (D) USE WITH REFRIGERATOR ICEMAKER.
 - (E) USE WITHOUT REFRIGERATOR ICEMAKER.
3. ALL TUBING TO BE SECURED AT 1200 INTERVALS MAXIMUM WITH CLAMP 10495-01-000 AND SCREW G67-10-12B.
2. TUBING TO BE INSTALLED WITH SUFFICIENT SLOPE TO PROVIDE DRAINAGE TO NEAREST VALVE.
1. PLASTIC FITTINGS TO BE SEALED WITH SEALANT 84456-01-000.

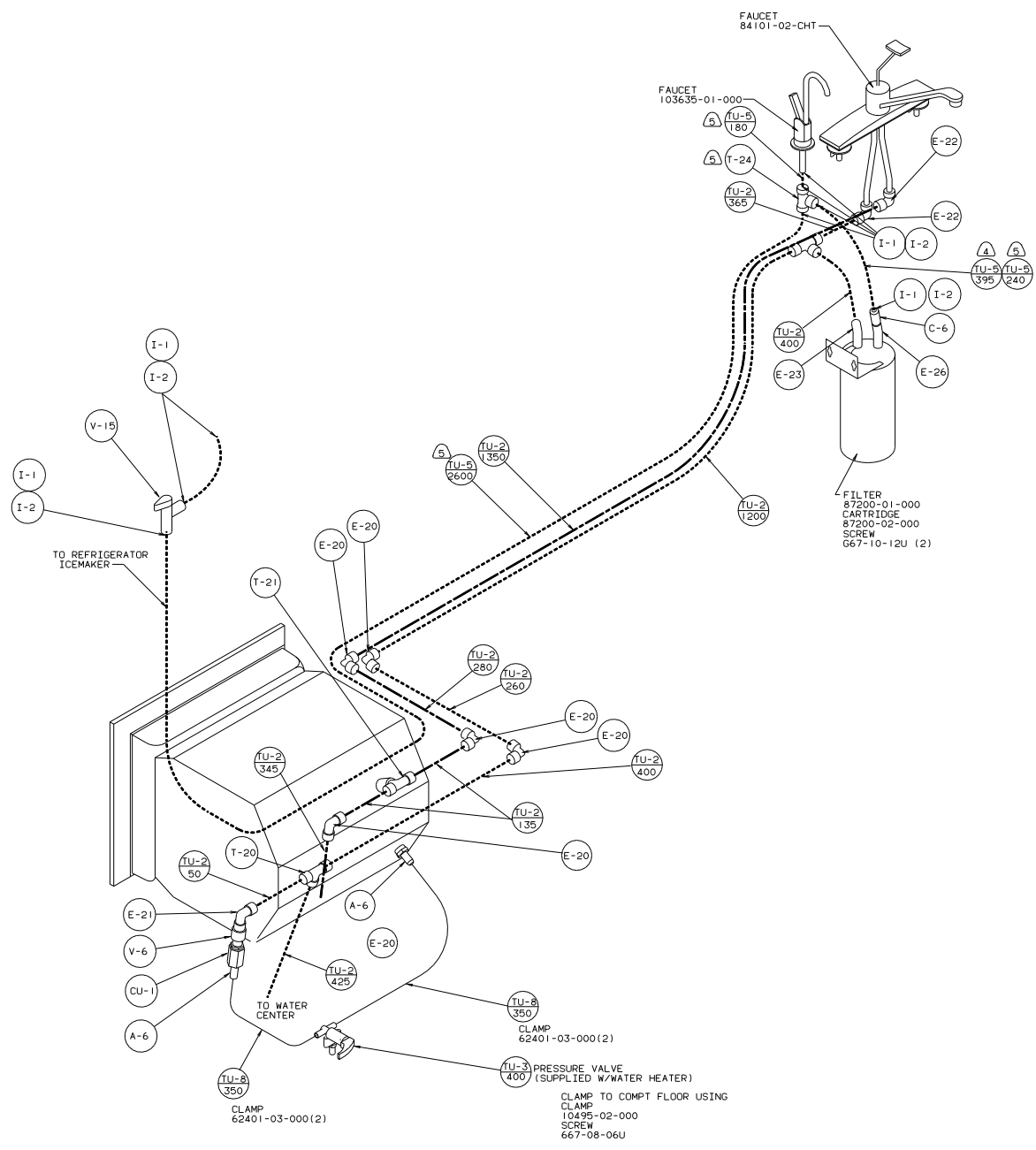
FOR WATER CALLOUTS SEE DWG NO. 116230-01-000

LEGEND	
HOT	-----
COLD	-----

WINNEBAGO 95 M31R0

DATE	UNSPECIFIED TOLERANCES ARE:	MATERIAL
CHG	WHOLE DIM (IN)	FR
REV	ONE-PLACE (IN, .01)	FR
REV	TWO-PLACE (IN, .005)	FR
REV	ANGLE	FR
REV	THIRD ANGLE PROJECTION	FR

LANE# M31R05 TITLE: WATER SYSTEM INSTL
 DIA # SCALE: NONE 30 NET SCALE DRAWING SIZE: 11E
 ALL DIMENSIONS ARE IN MILLIMETERS SHEET 1 OF 4 115033



DETAIL C WITH W.I.E. EXPORT PREP PACKAGE

- CLAMP 62401-03-000 (2)
- CLAMP 62401-03-000 (2)
- CLAMP TO COMPT FLOOR USING CLAMP 10495-02-000 SCREW 667-08-06U
- CLAMP 62401-03-000 (2)
- PRESSURE VALVE (SUPPLIED W/WATER HEATER)

95 M31RQ

TITLE: WATER SYSTEM INSTL	
30 MIL SCALE DRAWING	SIZE
SHEET 4 OF 4	115033