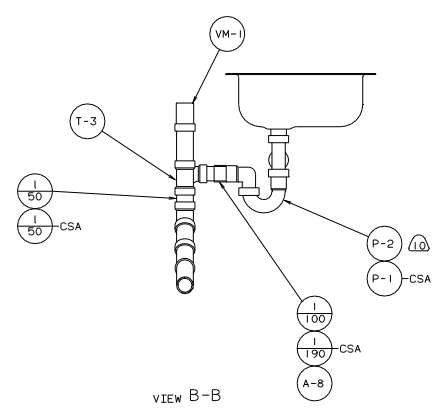


- SHOWER INSTL-ENCLOSURE (7)
 102834-01-000 STRAINER
 66729-01-000 SEALANT
 66435-01-000 WASHER
 69735-01-000 TAILPIECE
 11069-03-000 (US) NUT
 11069-02-000 (CAN) NUT
 66436-01-000

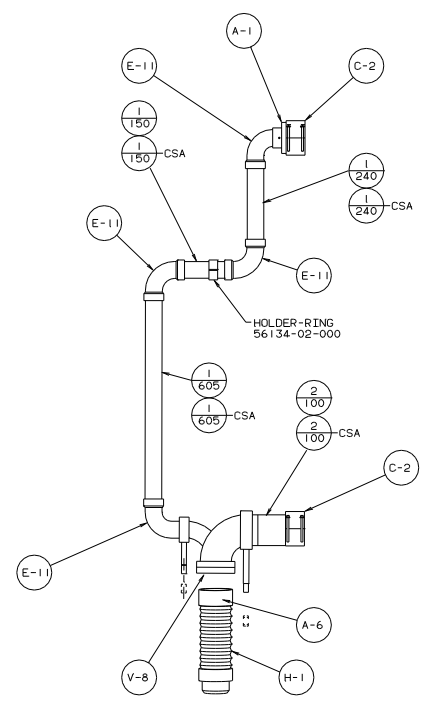
- (1) TRIM P-TRAP EXTENSION TO FIT.
- (10) SECURE VENT TUBES TO FLOOR.
- (9) VENT PIPE MUST PROJECT 51 MM MIN AND 63.5 MM MAX ABOVE ROOF FOR PROPER FIT AND FUNCTION.
- (8) SEE DWG 61607-01-000 FOR INSTL OF GROMMET.
- (7) SEAL ALL AROUND SHOWER WITH SILICONE 78474-01-CHT.
- 6. FOR CANADA UNITS EACH HOLDING TANK SHALL HAVE A CSA APPROVAL STAMPED NEAR THE TAPMO APPROVAL.
- 5. EXPOSED PIPE ABOVE ROOF TO BE PAINTED 37163-01-000.
- 4. ALL EXTERIOR OPENINGS AROUND PIPE TO BE SEALED WITH 69637-01-000.
- 3. ALL PIPE AND FITTINGS TO BE ASSEMBLED WITH SOLVENT 4020-01-000.
- 2. SLOPE OF TRAP ARM MUST BE 6 PER 300.
- 1. SLOPE OF HORIZONTAL PIPING TO BE 6 PER 305 MIN.

(X-X) FOR DRAINAGE CALLOUTS SEE DWG NO. 116229-01-000

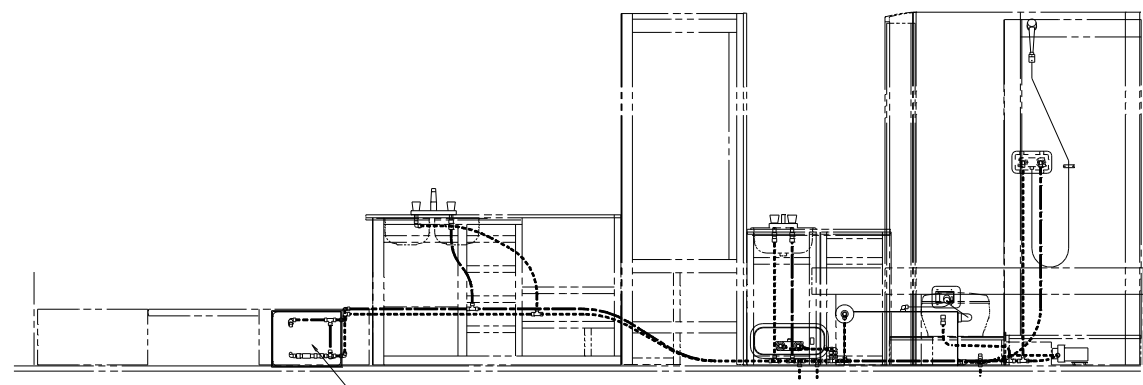
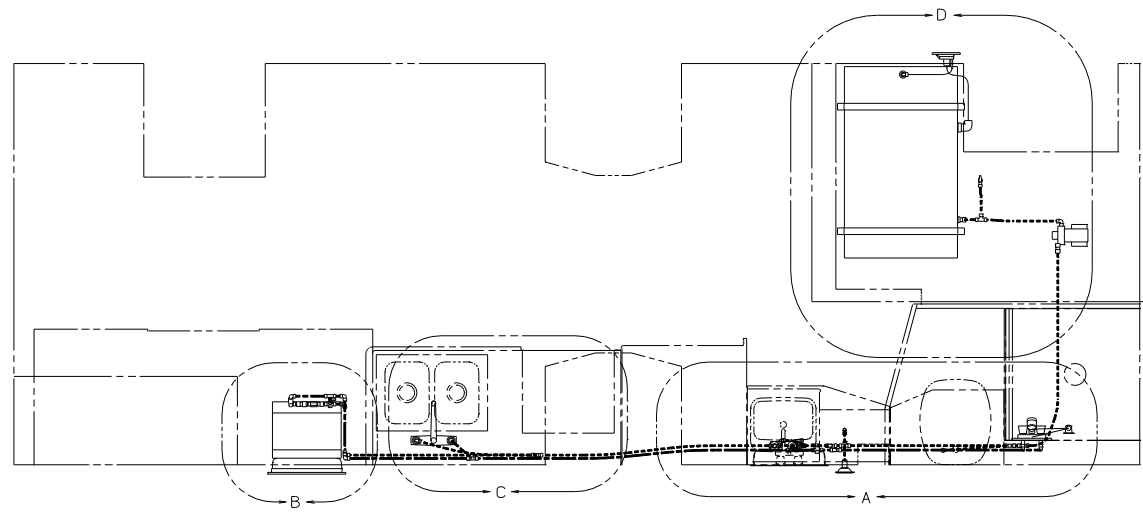
LUMBER F27RC5		TITLE: DRAINAGE SYSTEM INSTL	
DRN	UNSPECIFIED TOLERANCES ARE:	MATERIAL	
P.E.	WHOLE DIA (X1)	.	
W.E.	END-PLATE (X1)	.	
DRN	ANGLE	.	
DRN	THIRD ANGLE PROJECTION	.	
DRN	SCALE: NONE	NO. SHEETS: 2	
DRN	NO. SHEETS: 2	SHEET: 1 OF 2	
DRN	ALL DIMENSIONS ARE IN MILLIMETERS	DRN NO. 115815	



VIEW B-B



SECTION A-A



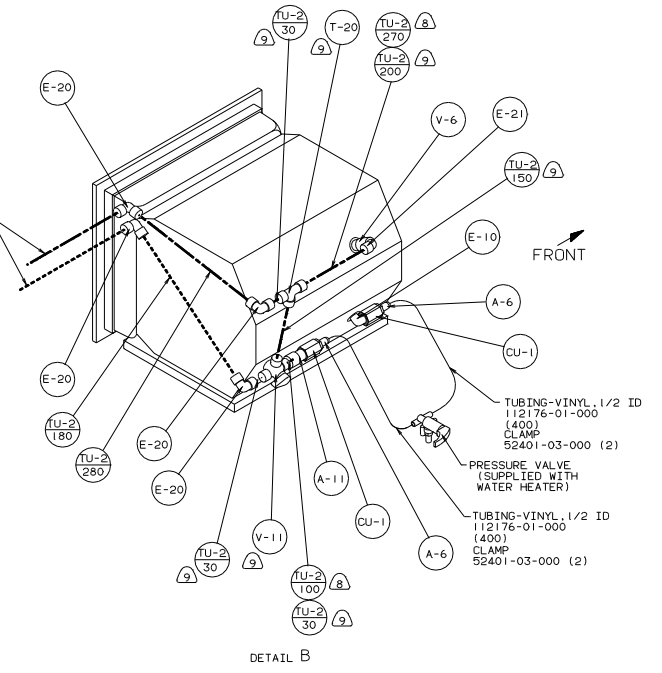
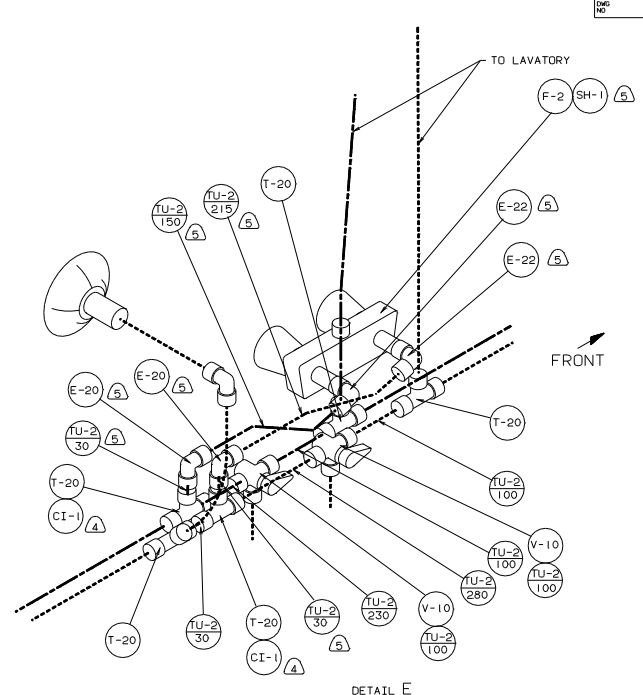
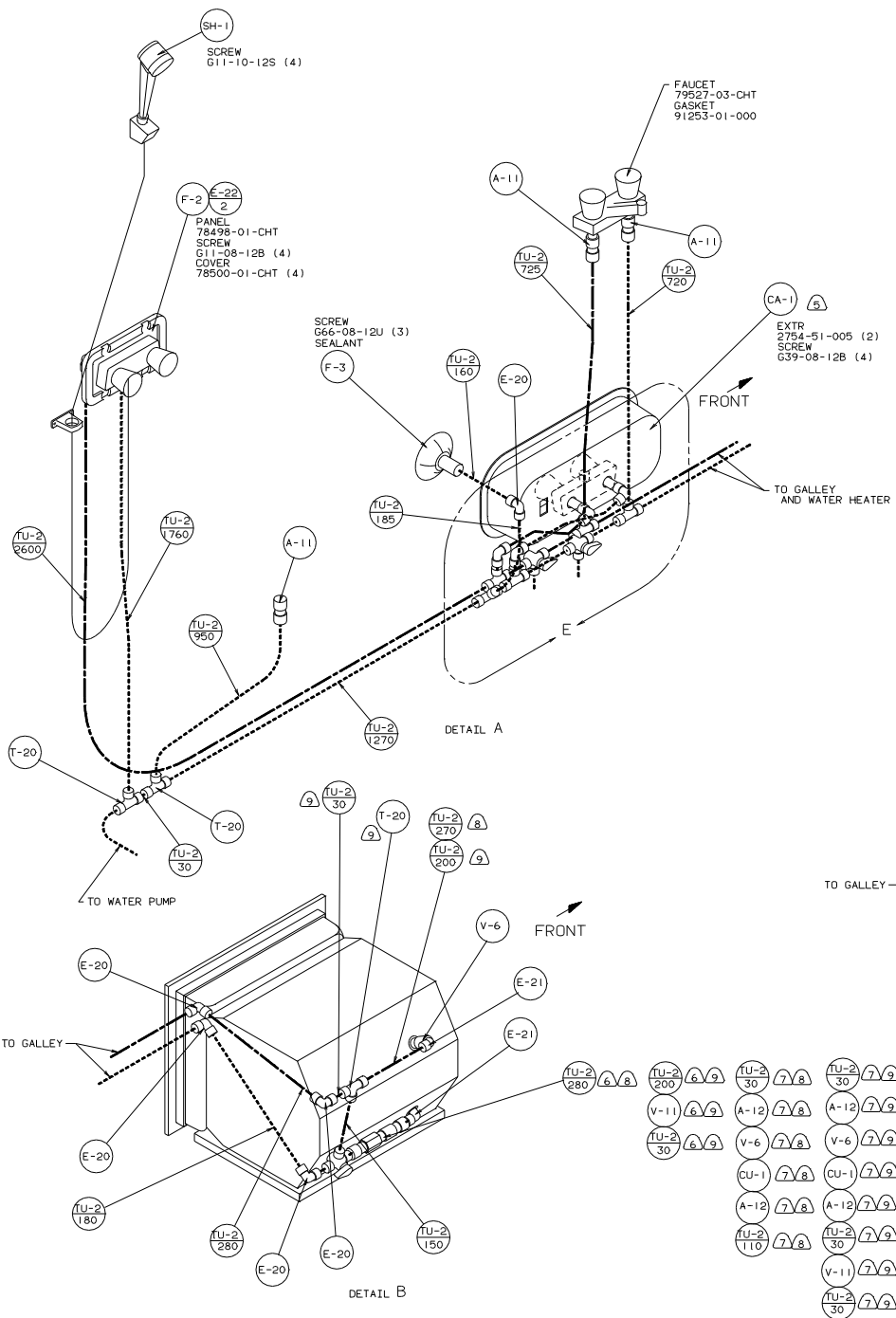
- WATER HEATER (6) (7)
- 51391-03-000
- 51391-01-000
- 111129-01-000 (11)
- DOOR
- 78506-01-CHT
- EXTR
- 2726-01-210 (2)
- 2726-01-212 (2) (10)
- SCREW
- G39-10-209 (18)
- SEALANT

- (13) PRESSURE VALVE MUST BE BETWEEN THE WATER HEATER AND CHECK VALVE OR BYPASS KIT.
 - (12) ADD CONNECTOR LINE WHEN WATER HEATER IS REMOVED WITH EUROPEAN EXPORT PACKAGE.
 - (11) USED WITH EUROPEAN EXPORT PACKAGE.
 - (10) MOUNT SHIELD TO HEATER FLANGE ABOVE EXHAUST VENT.
 - (9) USE WITH BYPASS.
 - (8) USE WITHOUT BYPASS.
 - (7) USE WITH MOTORAID.
 - (6) USE WITHOUT MOTORAID.
 - (5) USE WITH EXTERIOR SHOWER.
 - (4) USE WITHOUT EXTERIOR SHOWER.
3. ALL TUBING TO BE SECURED AT 1219 SPACING MAXIMUM WITH CLAMP 10495-01-000 AND SCREW G67-10-128.
2. PLASTIC FITTINGS TO BE SEALED WITH SEALANT 84456-01-000.
1. TUBING TO BE INSTALLED WITH SUFFICIENT SLOPE TO PROVIDE DRAINAGE TO NEAREST VALVE.

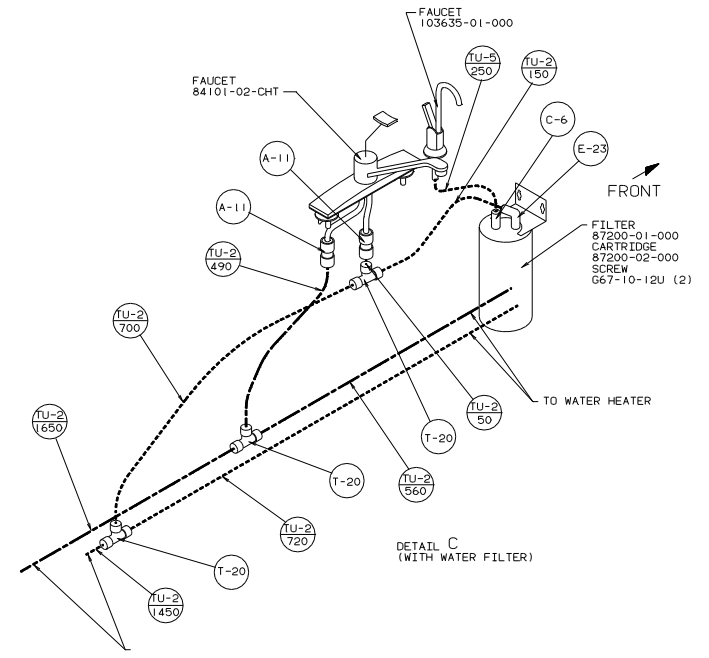
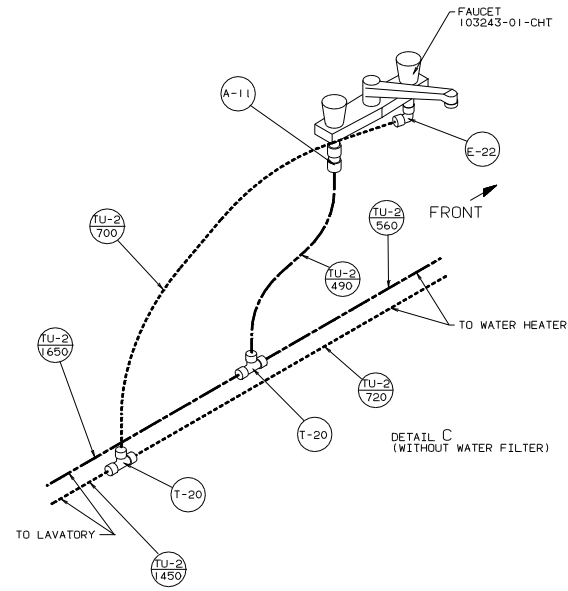
(X-X) FOR WATER CALLOUTS SEE DWG NO. 116230-01-000

LEGEND	
HOT	—————
COLD	-----

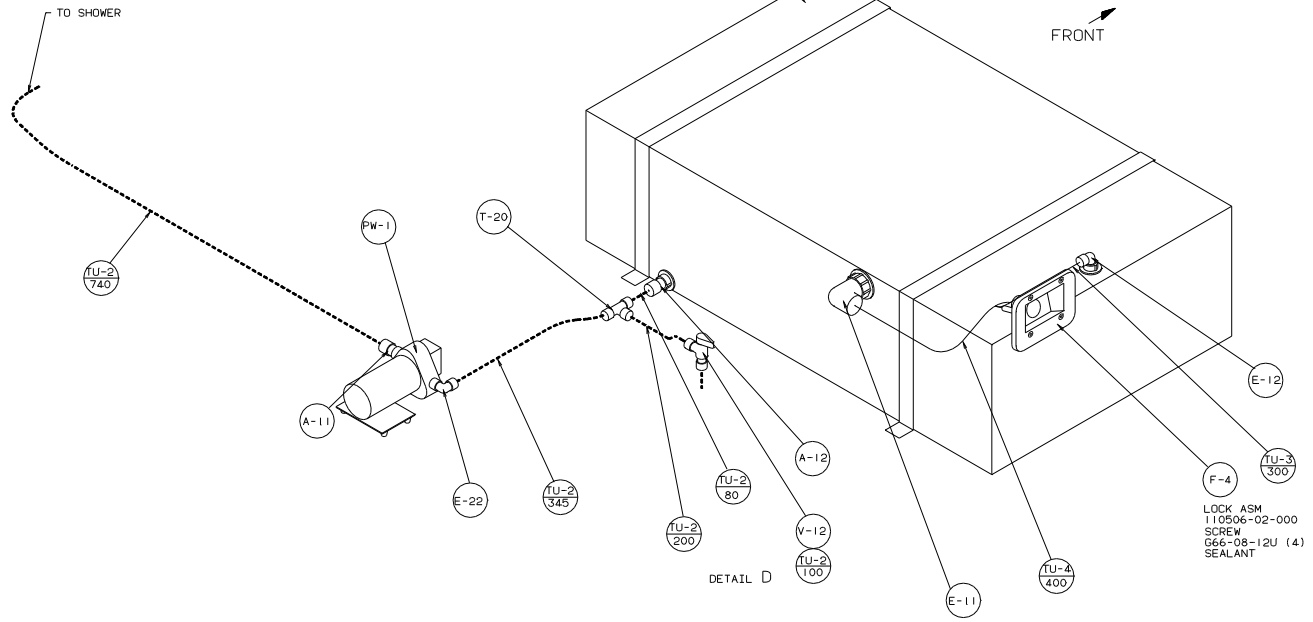
WINNEBAGO		95 F27RC
QTR	UNSPECIFIED TOLERANCES ARE	MATERIAL
CHP	WHOLE DIM. (1)	1/8"
FPE	ONE-PLACE (19, 31)	1/16"
IVE	TWO-PLACE (19, 31)	1/32"
IVE	WHOLE	1/8"
CDR	TRUSS W/ANGLE PROJECTION	
LARG# F27RC5	TITLE: WATER SYSTEM INSTL	115814
REV #	SCALE	NO. OF SHEETS
ALL DIMENSIONS ARE IN MILLIMETERS	1 OF 3	1



- TU-2 280 6 8
- TU-2 200 6 9
- TU-2 30 7 8
- TU-2 30 7 9
- V-11 6 9
- A-12 7 8
- A-12 7 9
- TU-2 30 6 9
- V-6 7 8
- V-6 7 9
- CU-1 7 8
- CU-1 7 9
- A-12 7 8
- A-12 7 9
- TU-2 110 7 8
- TU-2 30 7 9
- V-11 7 9
- TU-2 30 7 9



- TANK ASM-WATER, 54 GAL
 112348-05-000
 STRAP-RETAINING
 77220-06-000 (2)
 BOLT
 C18-05-40A (4)
 WASHER
 E13-16-00B (4)
 NUT
 D34-06-00B (4)



- LOCK ASM
 110506-02-000
 SCREW
 666-08-12U (4)
 SEALANT

TITLE		95 F27RC	
WATER SYSTEM INSTL			
30 NET SCALE DRAWING	SHEET 3 OF 3	REV	DATE
		1E	