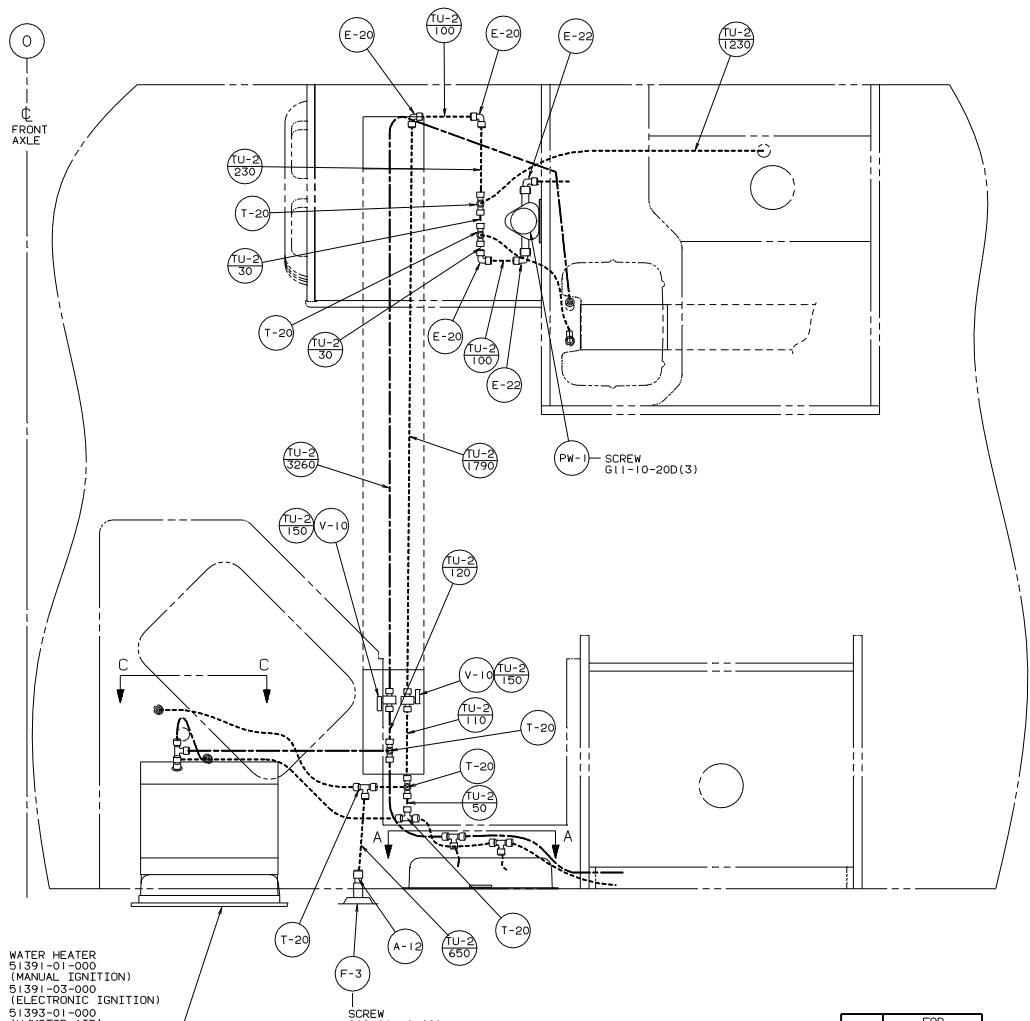
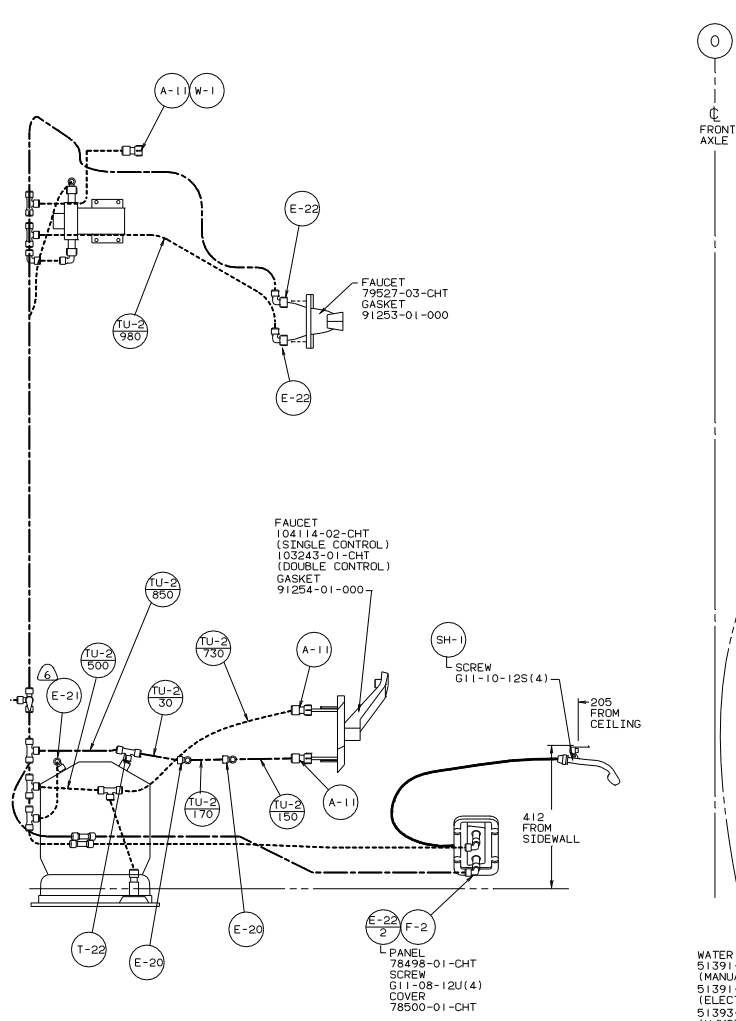


3. VENT PIPE MUST PROJECT 51 MM MIN AND 63.5 MM MAX ABOVE ROOF FOR PROPER FIT AND FUNCTION.
8. SEE DWG 61607-01-000 FOR INSTALLATION OF GROMMET.
7. SEAL ALL AROUND SHOWER WITH SILICONE.
6. FOR CAN UNITS EACH HOLDING TANK SHALL HAVE A CSA APPROVAL STAMPED NEAR THE IAMPO APPROVAL.
5. EXPOSED PIPE ABOVE ROOF TO BE PAINTED 37163-01-000.
4. ALL EXTERIOR OPENINGS AROUND PIPE TO BE SEALED WITH 110744-01-000.
3. ALL PIPE AND FITTINGS TO BE ASSEMBLED WITH SOLVENT 4020-01-000.
2. SLOPE OF TRAP ARM MUST BE 6 PER 305.
1. SLOPE OF HORIZONTAL PIPING TO BE 6 PER 305 MIN.

- 11 TRIM P-TRAP EXTENSION TO FIT.
- 10 SECURE VENT TUBES TO FLOOR WITH BRACKET 95061-01-000(2). CLAMP 62401-02-000.

X-X FOR DRAINAGE CALCULITS SEE DWG NO. 116229-01-000

WINNEMAGO 95 429W0	
DATE	UNSPECIFIED TOLERANCES ARE
DRW	WHOLE DIM (1) 1:1
REV	ONE PLACE (19, 31)
REV	TWO PLACE (19, 31)
REV	THREE PLACE (19, 31)
REV	FOUR PLACE (19, 31)
REV	FIVE PLACE (19, 31)
REV	SIX PLACE (19, 31)
REV	SEVEN PLACE (19, 31)
REV	EIGHT PLACE (19, 31)
REV	NINE PLACE (19, 31)
REV	TEN PLACE (19, 31)
REV	ELEVEN PLACE (19, 31)
REV	TWELVE PLACE (19, 31)
REV	THIRTEEN PLACE (19, 31)
REV	FOURTEEN PLACE (19, 31)
REV	FIFTEEN PLACE (19, 31)
REV	SIXTEEN PLACE (19, 31)
REV	SEVENTEEN PLACE (19, 31)
REV	EIGHTEEN PLACE (19, 31)
REV	NINETEEN PLACE (19, 31)
REV	TWENTY PLACE (19, 31)
REV	TWENTY ONE PLACE (19, 31)
REV	TWENTY TWO PLACE (19, 31)
REV	TWENTY THREE PLACE (19, 31)
REV	TWENTY FOUR PLACE (19, 31)
REV	TWENTY FIVE PLACE (19, 31)
REV	TWENTY SIX PLACE (19, 31)
REV	TWENTY SEVEN PLACE (19, 31)
REV	TWENTY EIGHT PLACE (19, 31)
REV	TWENTY NINE PLACE (19, 31)
REV	THIRTY PLACE (19, 31)
REV	THIRTY ONE PLACE (19, 31)
REV	THIRTY TWO PLACE (19, 31)
REV	THIRTY THREE PLACE (19, 31)
REV	THIRTY FOUR PLACE (19, 31)
REV	THIRTY FIVE PLACE (19, 31)
REV	THIRTY SIX PLACE (19, 31)
REV	THIRTY SEVEN PLACE (19, 31)
REV	THIRTY EIGHT PLACE (19, 31)
REV	THIRTY NINE PLACE (19, 31)
REV	FOURTY PLACE (19, 31)
REV	FOURTY ONE PLACE (19, 31)
REV	FOURTY TWO PLACE (19, 31)
REV	FOURTY THREE PLACE (19, 31)
REV	FOURTY FOUR PLACE (19, 31)
REV	FOURTY FIVE PLACE (19, 31)
REV	FOURTY SIX PLACE (19, 31)
REV	FOURTY SEVEN PLACE (19, 31)
REV	FOURTY EIGHT PLACE (19, 31)
REV	FOURTY NINE PLACE (19, 31)
REV	FIFTY PLACE (19, 31)
REV	FIFTY ONE PLACE (19, 31)
REV	FIFTY TWO PLACE (19, 31)
REV	FIFTY THREE PLACE (19, 31)
REV	FIFTY FOUR PLACE (19, 31)
REV	FIFTY FIVE PLACE (19, 31)
REV	FIFTY SIX PLACE (19, 31)
REV	FIFTY SEVEN PLACE (19, 31)
REV	FIFTY EIGHT PLACE (19, 31)
REV	FIFTY NINE PLACE (19, 31)
REV	SIXTY PLACE (19, 31)
REV	SIXTY ONE PLACE (19, 31)
REV	SIXTY TWO PLACE (19, 31)
REV	SIXTY THREE PLACE (19, 31)
REV	SIXTY FOUR PLACE (19, 31)
REV	SIXTY FIVE PLACE (19, 31)
REV	SIXTY SIX PLACE (19, 31)
REV	SIXTY SEVEN PLACE (19, 31)
REV	SIXTY EIGHT PLACE (19, 31)
REV	SIXTY NINE PLACE (19, 31)
REV	SEVENTY PLACE (19, 31)
REV	SEVENTY ONE PLACE (19, 31)
REV	SEVENTY TWO PLACE (19, 31)
REV	SEVENTY THREE PLACE (19, 31)
REV	SEVENTY FOUR PLACE (19, 31)
REV	SEVENTY FIVE PLACE (19, 31)
REV	SEVENTY SIX PLACE (19, 31)
REV	SEVENTY SEVEN PLACE (19, 31)
REV	SEVENTY EIGHT PLACE (19, 31)
REV	SEVENTY NINE PLACE (19, 31)
REV	EIGHTY PLACE (19, 31)
REV	EIGHTY ONE PLACE (19, 31)
REV	EIGHTY TWO PLACE (19, 31)
REV	EIGHTY THREE PLACE (19, 31)
REV	EIGHTY FOUR PLACE (19, 31)
REV	EIGHTY FIVE PLACE (19, 31)
REV	EIGHTY SIX PLACE (19, 31)
REV	EIGHTY SEVEN PLACE (19, 31)
REV	EIGHTY EIGHT PLACE (19, 31)
REV	EIGHTY NINE PLACE (19, 31)
REV	NINETY PLACE (19, 31)
REV	NINETY ONE PLACE (19, 31)
REV	NINETY TWO PLACE (19, 31)
REV	NINETY THREE PLACE (19, 31)
REV	NINETY FOUR PLACE (19, 31)
REV	NINETY FIVE PLACE (19, 31)
REV	NINETY SIX PLACE (19, 31)
REV	NINETY SEVEN PLACE (19, 31)
REV	NINETY EIGHT PLACE (19, 31)
REV	NINETY NINE PLACE (19, 31)
REV	HUNDRED PLACE (19, 31)



- 6. USE WITHOUT MTR. AID.
- 5. USE WITHOUT EXTERIOR SHOWER.
- 4. USE WITH EXTERIOR SHOWER.
- 3. ALL TUBING TO BE SECURED AT 1200 INTERVALS MAX WITH CLAMP 10495-01-000 OR CLIP 91951-01-000 AND SCREW G67-10-12B.
- 2. TUBING TO BE INSTALLED WITH SUFFICIENT SLOPE TO PROVIDE DRAINAGE TO NEAREST VALVE.
- 1. PLASTIC FITTINGS TO BE SEALED WITH SEALANT 84456-01-000.

WATER HEATER  
 51391-01-000  
 (MANUAL IGNITION)  
 51391-03-000  
 (ELECTRONIC IGNITION)  
 51393-01-000  
 (W/MOTOR AID)  
 DOOR  
 78506-01-CHT  
 AL. EXTR.  
 2726-01-210  
 2726-01-212(2)  
 SCREW  
 G39-10-209(18)  
 SEALANT

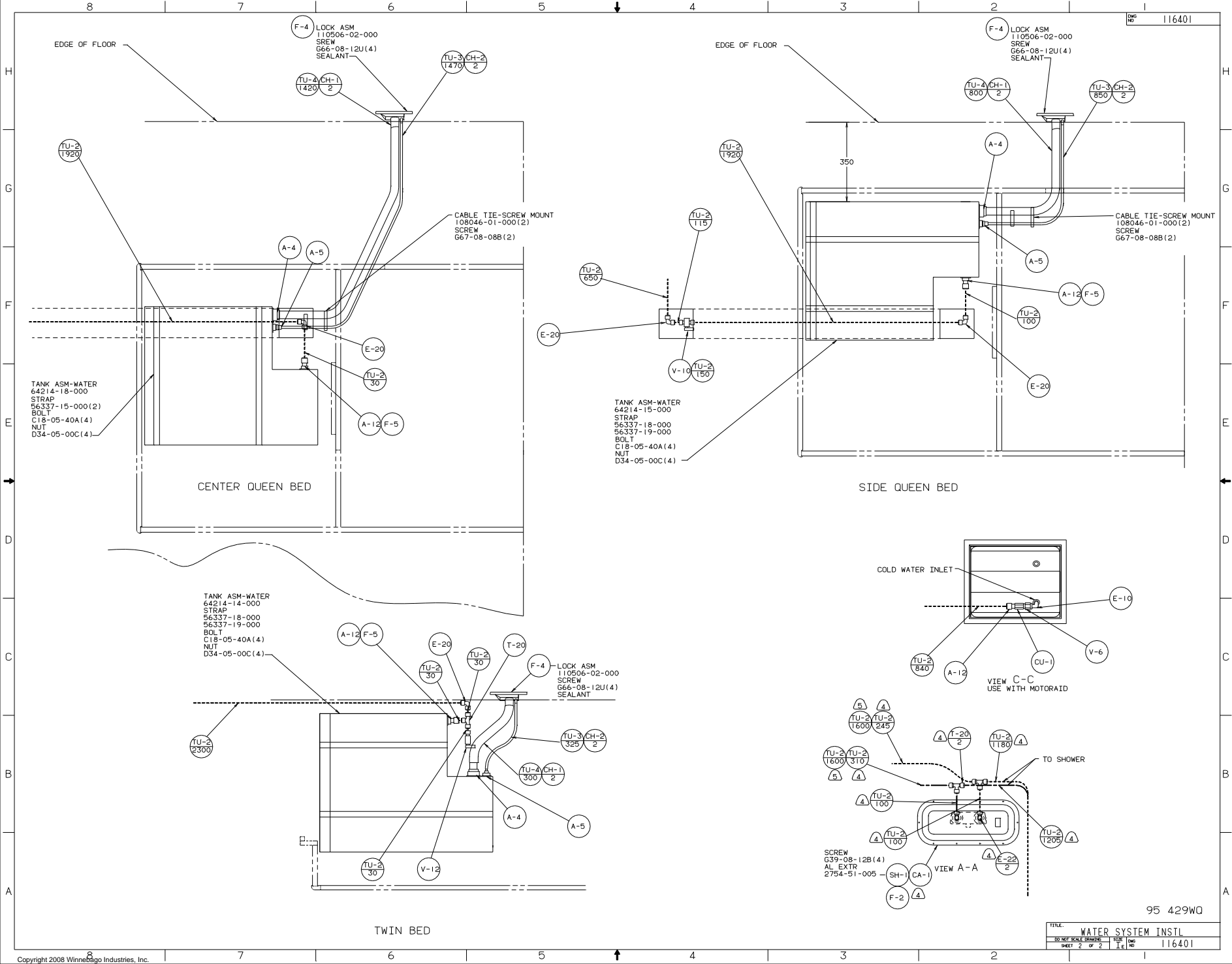
LEGEND	
HOT	—————
COLD	-----

X-X FOR WATER CALLOUTS SEE DWG NO. 116230-01-000

**WINNEGAGO** 95 429W0

DATE	11 16 40 I	UNSPECIFIED TOLERANCES ARE	MATERIAL
DRW		WHOLE DIM (IN)	± .1
FILE		ONE-PLACE (IN .01)	± .01
FILE		TWO-PLACE (IN .001)	± .001
FILE		THREE-PLACE (IN .0001)	± .0001
FILE		FOUR-PLACE (IN .00001)	± .00001
FILE		FIVE-PLACE (IN .000001)	± .000001
FILE		SIX-PLACE (IN .0000001)	± .0000001
FILE		SEVEN-PLACE (IN .00000001)	± .00000001
FILE		EIGHT-PLACE (IN .000000001)	± .000000001
FILE		NINE-PLACE (IN .0000000001)	± .0000000001
FILE		TEN-PLACE (IN .00000000001)	± .00000000001

LANIT 429W14 TITLE: WATER SYSTEM INSTL  
 DIA # SCALE NONE 30 NET SCALE DRAWING SIZE 116401  
 ALL DIMENSIONS ARE IN MILLIMETERS SHEET 1 OF 2 1 E 10



EDGE OF FLOOR

EDGE OF FLOOR

F-4 LOCK ASM  
110506-02-000  
SCREW  
G66-08-12U(4)  
SEALANT

F-4 LOCK ASM  
110506-02-000  
SCREW  
G66-08-12U(4)  
SEALANT

TU-2 CH-1  
1420 2

TU-3 CH-2  
1470 2

TU-2 CH-1  
800 2

TU-3 CH-2  
850 2

TU-2  
1920

TU-2  
1920

A-4

A-5

A-4

A-5

CABLE TIE-SCREW MOUNT  
108046-01-000(2)  
SCREW  
G67-08-08B(2)

CABLE TIE-SCREW MOUNT  
108046-01-000(2)  
SCREW  
G67-08-08B(2)

TANK ASM-WATER  
64214-18-000  
STRAP  
56337-15-000(2)  
BOLT  
C18-05-40A(4)  
NUT  
D34-05-00C(4)

TANK ASM-WATER  
64214-15-000  
STRAP  
56337-18-000  
56337-19-000  
BOLT  
C18-05-40A(4)  
NUT  
D34-05-00C(4)

TU-2  
30

A-12 F-5

A-12 F-5

TU-2  
100

E-20

CENTER QUEEN BED

SIDE QUEEN BED

TANK ASM-WATER  
64214-14-000  
STRAP  
56337-18-000  
56337-19-000  
BOLT  
C18-05-40A(4)  
NUT  
D34-05-00C(4)

F-4 LOCK ASM  
110506-02-000  
SCREW  
G66-08-12U(4)  
SEALANT

COLD WATER INLET

A-12 F-5

TU-2  
30

TU-2  
30

T-20

F-4

TU-2  
840

A-12

CU-1

V-6

VIEW C-C  
USE WITH MOTORAID

TU-2  
2300

TU-3 CH-2  
325 2

TU-4 CH-1  
300 2

A-4

A-5

TU-2  
30

V-12

TU-2  
1600

TU-2  
245

T-20  
2

TU-2  
1160

TU-2  
1600

TU-2  
310

TU-2  
100

TU-2  
100

E-20  
2

TU-2  
1205

SCREW  
G39-08-12B(4)  
AL EXTR  
2754-51-005

SH-1

CA-1

F-2

TO SHOWER

VIEW A-A