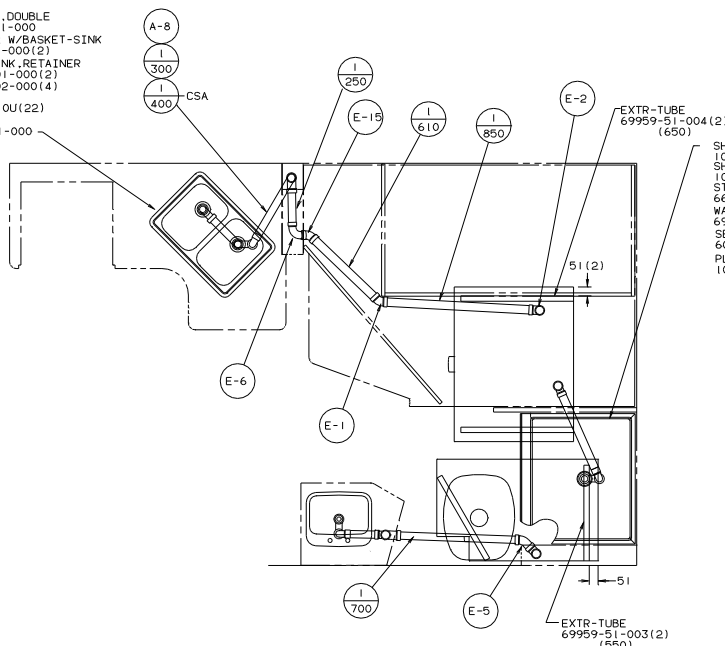


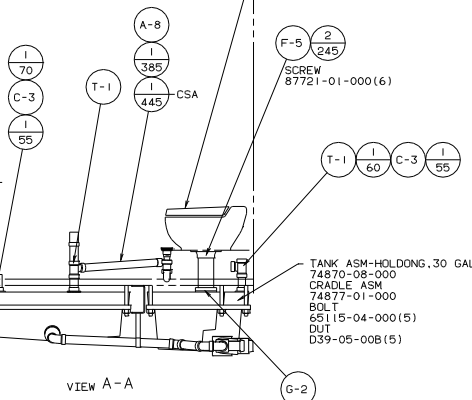
SINK-SST.DOUBLE  
 104113-01-000  
 STRAINER W/BASKET-SINK  
 92303-01-000(2)  
 ANGLE-SINK,RETAINER  
 105497-01-000(2)  
 105497-02-000(4)  
 SCREW  
 G67-06-10U(22)  
 SEALER  
 69640-01-000

FRONT AXLE  
 0



VIEW B-B

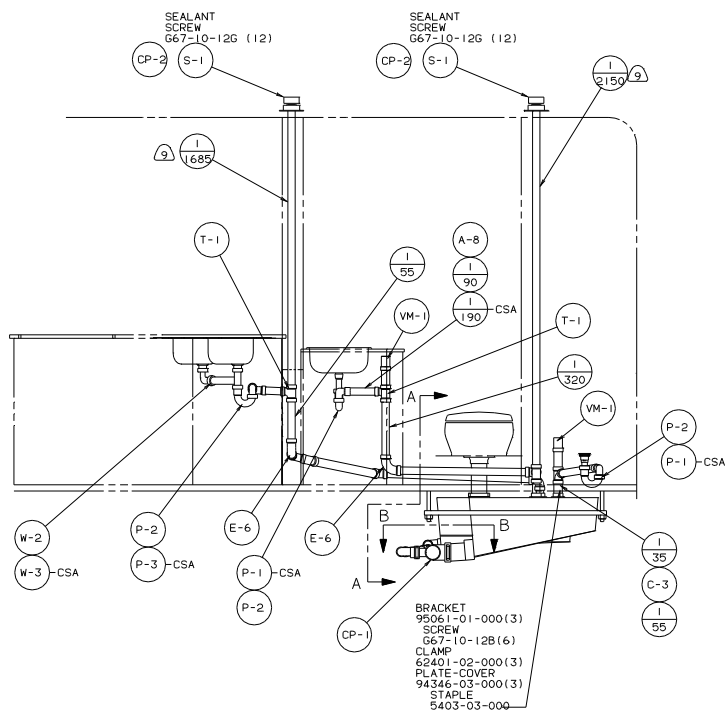
TOILET  
 79565-01-CHT(AQUA MAGIC)  
 TOILET  
 84738-01-CHT(AQUA IV)  
 PLATFORM ASM-TOILET  
 107042-01-XXX



VIEW A-A

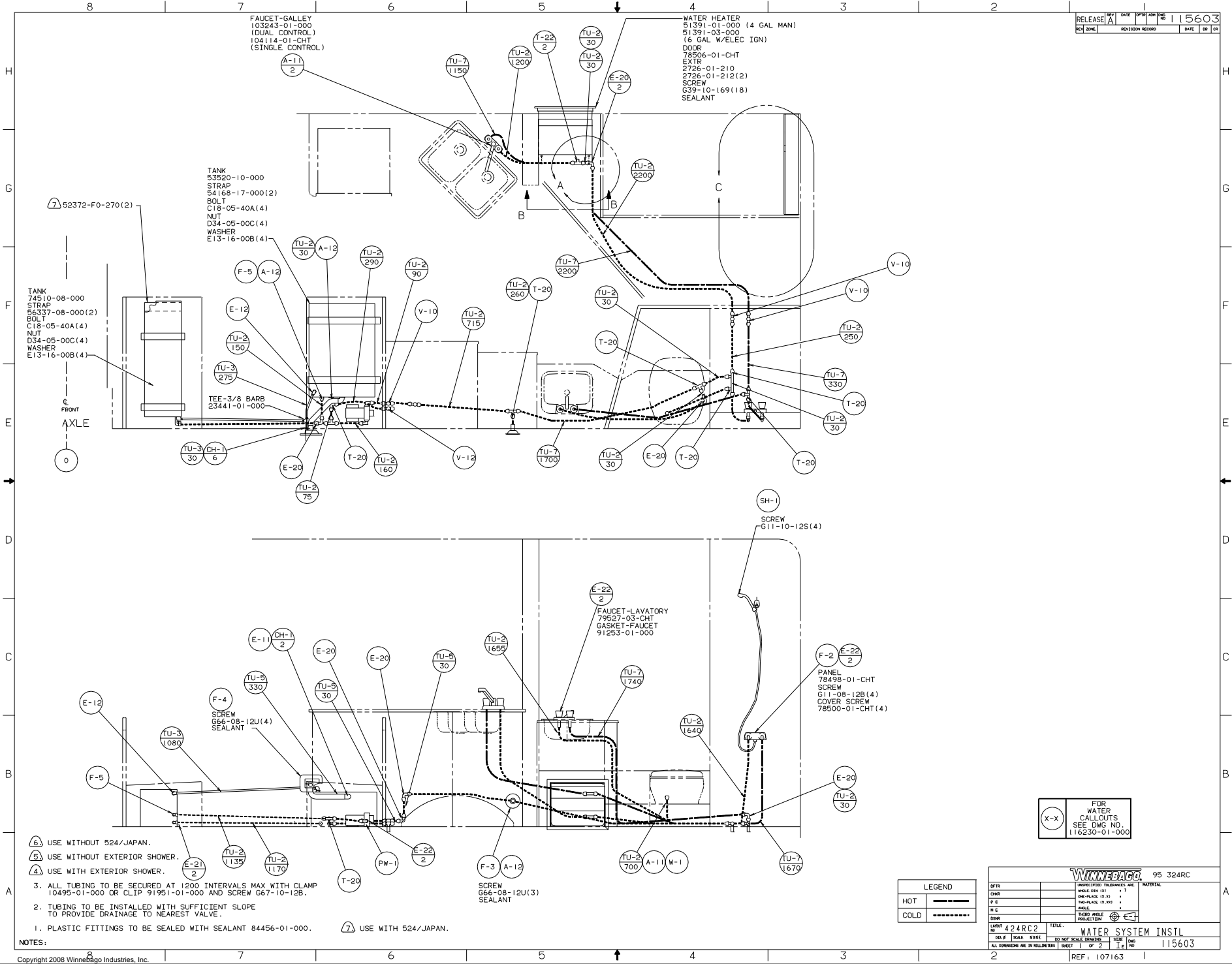
- 10 SECURE VENT TUBES TO FLOOR WITH BRACKET 95061-01-000(2), CLAMP 62401-02-000, PLATE COVER 94346-03-000, SCREW G67-10-12B(2), AND STAPLE 5403-01-000.
- VENT PIPE MUST PROJECT 51 MM MIN AND 63.5 MM MAX ABOVE ROOF FOR PROPER FIT AND FUNCTION.
- SEE DWG 61607-01-000 FOR INSTL OF GROMMETS.
- SEAL ALL AROUND SHOWER WITH SILICONE.
- FOR CAN UNITS EACH HOLDING TANK SHALL HAVE A CSA APPROVAL STAMPED NEAR THE IAMPO APPROVAL.
- EXPOSED PIPE ABOVE ROOF TO BE PAINTED 37163-01-000.
- ALL EXTERIOR OPENINGS AROUND PIPE TO BE SEALED WITH 110744-01-000.
- ALL PIPE AND FITTINGS TO BE ASSEMBLED WITH SOLVENT 4020-01-000.
- SLOPE OF TRAP ARM MUST BE 6 PER 305.
- SLOPE OF HORIZONTAL PIPING TO BE 6 PER 305 MIN.

NOTES:



FOR DRAINAGE CALLOUTS SEE DWG NO. 116229-01-000

LAYOUT NO. 424RC2		TITLE: DRAINAGE SYSTEM INSTL	
DATE	SCALE	NO. OF SHEETS	SHEET 1 OF 1
UNSPECIFIED TOLERANCES ARE:		MATERIAL	
CHD	± .005	ONE-PLATE (19.81)	± .005
PIE	± .005	TWO-PLATE (19.81)	± .005
PIE	± .005	THREE-PLATE (19.81)	± .005
PIE	± .005	FOUR-PLATE (19.81)	± .005
PIE	± .005	FIVE-PLATE (19.81)	± .005
PIE	± .005	SIX-PLATE (19.81)	± .005
PIE	± .005	SEVEN-PLATE (19.81)	± .005
PIE	± .005	EIGHT-PLATE (19.81)	± .005
PIE	± .005	NINE-PLATE (19.81)	± .005
PIE	± .005	TEN-PLATE (19.81)	± .005
PIE	± .005	ELEVEN-PLATE (19.81)	± .005
PIE	± .005	TWELVE-PLATE (19.81)	± .005
PIE	± .005	THIRTEEN-PLATE (19.81)	± .005
PIE	± .005	FOURTEEN-PLATE (19.81)	± .005
PIE	± .005	FIFTEEN-PLATE (19.81)	± .005
PIE	± .005	SIXTEEN-PLATE (19.81)	± .005
PIE	± .005	SEVENTEEN-PLATE (19.81)	± .005
PIE	± .005	EIGHTEEN-PLATE (19.81)	± .005
PIE	± .005	NINETEEN-PLATE (19.81)	± .005
PIE	± .005	TWENTY-PLATE (19.81)	± .005
PIE	± .005	ONE-PLATE (19.81)	± .005
PIE	± .005	TWO-PLATE (19.81)	± .005
PIE	± .005	THREE-PLATE (19.81)	± .005
PIE	± .005	FOUR-PLATE (19.81)	± .005
PIE	± .005	FIVE-PLATE (19.81)	± .005
PIE	± .005	SIX-PLATE (19.81)	± .005
PIE	± .005	SEVEN-PLATE (19.81)	± .005
PIE	± .005	EIGHT-PLATE (19.81)	± .005
PIE	± .005	NINE-PLATE (19.81)	± .005
PIE	± .005	TEN-PLATE (19.81)	± .005
PIE	± .005	ELEVEN-PLATE (19.81)	± .005
PIE	± .005	TWELVE-PLATE (19.81)	± .005
PIE	± .005	THIRTEEN-PLATE (19.81)	± .005
PIE	± .005	FOURTEEN-PLATE (19.81)	± .005
PIE	± .005	FIFTEEN-PLATE (19.81)	± .005
PIE	± .005	SIXTEEN-PLATE (19.81)	± .005
PIE	± .005	SEVENTEEN-PLATE (19.81)	± .005
PIE	± .005	EIGHTEEN-PLATE (19.81)	± .005
PIE	± .005	NINETEEN-PLATE (19.81)	± .005
PIE	± .005	TWENTY-PLATE (19.81)	± .005
PIE	± .005	ONE-PLATE (19.81)	± .005
PIE	± .005	TWO-PLATE (19.81)	± .005
PIE	± .005	THREE-PLATE (19.81)	± .005
PIE	± .005	FOUR-PLATE (19.81)	± .005
PIE	± .005	FIVE-PLATE (19.81)	± .005
PIE	± .005	SIX-PLATE (19.81)	± .005
PIE	± .005	SEVEN-PLATE (19.81)	± .005
PIE	± .005	EIGHT-PLATE (19.81)	± .005
PIE	± .005	NINE-PLATE (19.81)	± .005
PIE	± .005	TEN-PLATE (19.81)	± .005
PIE	± .005	ELEVEN-PLATE (19.81)	± .005
PIE	± .005	TWELVE-PLATE (19.81)	± .005
PIE	± .005	THIRTEEN-PLATE (19.81)	± .005
PIE	± .005	FOURTEEN-PLATE (19.81)	± .005
PIE	± .005	FIFTEEN-PLATE (19.81)	± .005
PIE	± .005	SIXTEEN-PLATE (19.81)	± .005
PIE	± .005	SEVENTEEN-PLATE (19.81)	± .005
PIE	± .005	EIGHTEEN-PLATE (19.81)	± .005
PIE	± .005	NINETEEN-PLATE (19.81)	± .005
PIE	± .005	TWENTY-PLATE (19.81)	± .005
PIE	± .005	ONE-PLATE (19.81)	± .005
PIE	± .005	TWO-PLATE (19.81)	± .005
PIE	± .005	THREE-PLATE (19.81)	± .005
PIE	± .005	FOUR-PLATE (19.81)	± .005
PIE	± .005	FIVE-PLATE (19.81)	± .005
PIE	± .005	SIX-PLATE (19.81)	± .005
PIE	± .005	SEVEN-PLATE (19.81)	± .005
PIE	± .005	EIGHT-PLATE (19.81)	± .005
PIE	± .005	NINE-PLATE (19.81)	± .005
PIE	± .005	TEN-PLATE (19.81)	± .005
PIE	± .005	ELEVEN-PLATE (19.81)	± .005
PIE	± .005	TWELVE-PLATE (19.81)	± .005
PIE	± .005	THIRTEEN-PLATE (19.81)	± .005
PIE	± .005	FOURTEEN-PLATE (19.81)	± .005
PIE	± .005	FIFTEEN-PLATE (19.81)	± .005
PIE	± .005	SIXTEEN-PLATE (19.81)	± .005
PIE	± .005	SEVENTEEN-PLATE (19.81)	± .005
PIE	± .005	EIGHTEEN-PLATE (19.81)	± .005
PIE	± .005	NINETEEN-PLATE (19.81)	± .005
PIE	± .005	TWENTY-PLATE (19.81)	± .005
PIE	± .005	ONE-PLATE (19.81)	± .005
PIE	± .005	TWO-PLATE (19.81)	± .005
PIE	± .005	THREE-PLATE (19.81)	± .005
PIE	± .005	FOUR-PLATE (19.81)	± .005
PIE	± .005	FIVE-PLATE (19.81)	± .005
PIE	± .005	SIX-PLATE (19.81)	± .005
PIE	± .005	SEVEN-PLATE (19.81)	± .005
PIE	± .005	EIGHT-PLATE (19.81)	± .005
PIE	± .005	NINE-PLATE (19.81)	± .005
PIE	± .005	TEN-PLATE (19.81)	± .005
PIE	± .005	ELEVEN-PLATE (19.81)	± .005
PIE	± .005	TWELVE-PLATE (19.81)	± .005
PIE	± .005	THIRTEEN-PLATE (19.81)	± .005
PIE	± .005	FOURTEEN-PLATE (19.81)	± .005
PIE	± .005	FIFTEEN-PLATE (19.81)	± .005
PIE	± .005	SIXTEEN-PLATE (19.81)	± .005
PIE	± .005	SEVENTEEN-PLATE (19.81)	± .005
PIE	± .005	EIGHTEEN-PLATE (19.81)	± .005
PIE	± .005	NINETEEN-PLATE (19.81)	± .005
PIE	± .005	TWENTY-PLATE (19.81)	± .005
PIE	± .005	ONE-PLATE (19.81)	± .005
PIE	± .005	TWO-PLATE (19.81)	± .005
PIE	± .005	THREE-PLATE (19.81)	± .005
PIE	± .005	FOUR-PLATE (19.81)	± .005
PIE	± .005	FIVE-PLATE (19.81)	± .005
PIE	± .005	SIX-PLATE (19.81)	± .005
PIE	± .005	SEVEN-PLATE (19.81)	± .005
PIE	± .005	EIGHT-PLATE (19.81)	± .005
PIE	± .005	NINE-PLATE (19.81)	± .005
PIE	± .005	TEN-PLATE (19.81)	± .005
PIE	± .005	ELEVEN-PLATE (19.81)	± .005
PIE	± .005	TWELVE-PLATE (19.81)	± .005
PIE	± .005	THIRTEEN-PLATE (19.81)	± .005
PIE	± .005	FOURTEEN-PLATE (19.81)	± .005
PIE	± .005	FIFTEEN-PLATE (19.81)	± .005
PIE	± .005	SIXTEEN-PLATE (19.81)	± .005
PIE	± .005	SEVENTEEN-PLATE (19.81)	± .005
PIE	± .005	EIGHTEEN-PLATE (19.81)	± .005
PIE	± .005	NINETEEN-PLATE (19.81)	± .005
PIE	± .005	TWENTY-PLATE (19.81)	± .005
PIE	± .005	ONE-PLATE (19.81)	± .005
PIE	± .005	TWO-PLATE (19.81)	± .005
PIE	± .005	THREE-PLATE (19.81)	± .005
PIE	± .005	FOUR-PLATE (19.81)	± .005
PIE	± .005	FIVE-PLATE (19.81)	± .005
PIE	± .005	SIX-PLATE (19.81)	± .005
PIE	± .005	SEVEN-PLATE (19.81)	± .005
PIE	± .005	EIGHT-PLATE (19.81)	± .005
PIE	± .005	NINE-PLATE (19.81)	± .005
PIE	± .005	TEN-PLATE (19.81)	± .005
PIE	± .005	ELEVEN-PLATE (19.81)	± .005
PIE	± .005	TWELVE-PLATE (19.81)	± .005
PIE	± .005	THIRTEEN-PLATE (19.81)	± .005
PIE	± .005	FOURTEEN-PLATE (19.81)	± .005
PIE	± .005	FIFTEEN-PLATE (19.81)	± .005
PIE	± .005	SIXTEEN-PLATE (19.81)	± .005
PIE	± .005	SEVENTEEN-PLATE (19.81)	± .005
PIE	± .005	EIGHTEEN-PLATE (19.81)	± .005
PIE	± .005	NINETEEN-PLATE (19.81)	± .005
PIE	± .005	TWENTY-PLATE (19.81)	± .005
PIE	± .005	ONE-PLATE (19.81)	± .005
PIE	± .005	TWO-PLATE (19.81)	± .005
PIE	± .005	THREE-PLATE (19.81)	± .005
PIE	± .005	FOUR-PLATE (19.81)	± .005
PIE	± .005	FIVE-PLATE (19.81)	± .005
PIE	± .005	SIX-PLATE (19.81)	± .005
PIE	± .005	SEVEN-PLATE (19.81)	± .005
PIE	± .005	EIGHT-PLATE (19.81)	± .005
PIE	± .005	NINE-PLATE (19.81)	± .005
PIE	± .005	TEN-PLATE (19.81)	± .005
PIE	± .005	ELEVEN-PLATE (19.81)	± .005
PIE	± .005	TWELVE-PLATE (19.81)	± .005
PIE	± .005	THIRTEEN-PLATE (19.81)	± .005
PIE	± .005	FOURTEEN-PLATE (19.81)	± .005
PIE	± .005	FIFTEEN-PLATE (19.81)	± .005
PIE	± .005	SIXTEEN-PLATE (19.81)	± .005
PIE	± .005	SEVENTEEN-PLATE (19.81)	± .005
PIE	± .005	EIGHTEEN-PLATE (19.81)	± .005
PIE	± .005	NINETEEN-PLATE (19.81)	± .005
PIE	± .005	TWENTY-PLATE (19.81)	± .005
PIE	± .005	ONE-PLATE (19.81)	± .005
PIE	± .005	TWO-PLATE (19.81)	± .005
PIE	± .005	THREE-PLATE (19.81)	± .005
PIE	± .005	FOUR-PLATE (19.81)	± .005
PIE	± .005	FIVE-PLATE (19.81)	± .005
PIE	± .005	SIX-PLATE (19.81)	± .005
PIE	± .005	SEVEN-PLATE (19.81)	± .005
PIE	± .005	EIGHT-PLATE (19.81)	± .005
PIE	± .005	NINE-PLATE (19.81)	± .005
PIE	± .005	TEN-PLATE (19.81)	± .005
PIE	± .005	ELEVEN-PLATE (19.81)	± .005
PIE	± .005	TWELVE-PLATE (19.81)	± .005
PIE	± .005	THIRTEEN-PLATE (19.81)	± .005
PIE	± .005	FOURTEEN-PLATE (19.81)	± .005
PIE	± .005	FIFTEEN-PLATE (19.81)	± .005
PIE	± .005	SIXTEEN-PLATE (19.81)	± .005
PIE	± .005	SEVENTEEN-PLATE (19.81)	± .005
PIE	± .005	EIGHTEEN-PLATE (19.81)	± .005
PIE	± .005	NINETEEN-PLATE (19.81)	± .005
PIE	± .005	TWENTY-PLATE (19.81)	± .005
PIE	± .005	ONE-PLATE (19.81)	± .005
PIE	± .005	TWO-PLATE (19.81)	± .005
PIE	± .005	THREE-PLATE (19.81)	± .005
PIE	± .005	FOUR-PLATE (19.81)	± .005
PIE	± .005	FIVE-PLATE (19.81)	± .005
PIE	± .005	SIX-PLATE (19.81)	± .005
PIE	± .005	SEVEN-PLATE (19.81)	± .005
PIE	± .005	EIGHT-PLATE (19.81)	± .005
PIE	± .005	NINE-PLATE (19.81)	± .005



FAUCET-GALLEY  
103243-01-000  
(DUAL CONTROL)  
104114-01-CHT  
(SINGLE CONTROL)

WATER HEATER  
51391-01-000 (4 GAL MAN)  
51391-03-000  
(6 GAL W/ELEC IGN)  
DOOR  
78506-01-CHT  
EXTR  
2726-01-210  
2726-01-212(2)  
SCREW  
G39-10-169(18)  
SEALANT

TANK  
53520-10-000  
STRAP  
54168-17-000(2)  
BOLT  
C18-05-40A(4)  
NUT  
D34-05-00C(4)  
WASHER  
E13-16-00B(4)

TANK  
74510-08-000  
STRAP  
56337-08-000(2)  
BOLT  
C18-05-40A(4)  
NUT  
D34-05-00C(4)  
WASHER  
E13-16-00B(4)

FRONT  
AXLE

TEE-3/8 BARB  
23441-01-000

FAUCET-LAVATORY  
79527-03-CHT  
GASKET-FAUCET  
91253-01-000

PANEL  
78498-01-CHT  
SCREW  
G11-08-12B(4)  
COVER SCREW  
78500-01-CHT(4)

- NOTES:
1. PLASTIC FITTINGS TO BE SEALED WITH SEALANT 84456-01-000.
  2. TUBING TO BE INSTALLED WITH SUFFICIENT SLOPE TO PROVIDE DRAINAGE TO NEAREST VALVE.
  3. ALL TUBING TO BE SECURED AT 1200 INTERVALS MAX WITH CLAMP 10495-01-000 OR CLIP 91951-01-000 AND SCREW G67-10-12B.

LEGEND	
HOT	—————
COLD	—————

WINNERACO 95 324RC

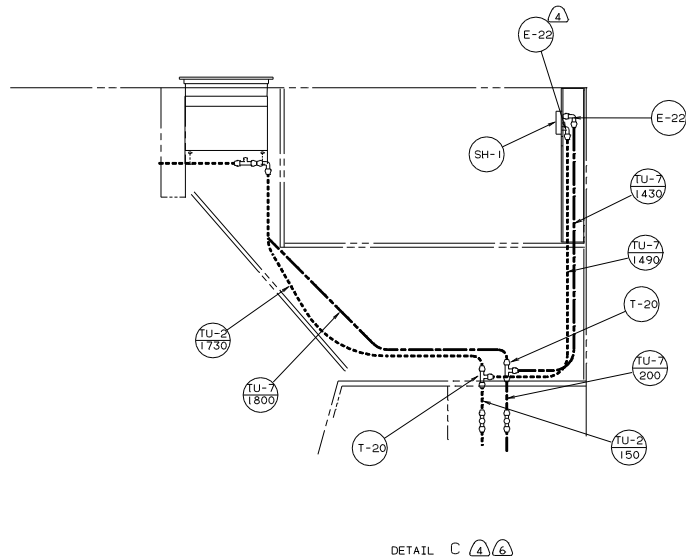
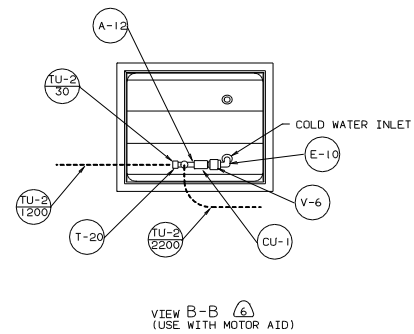
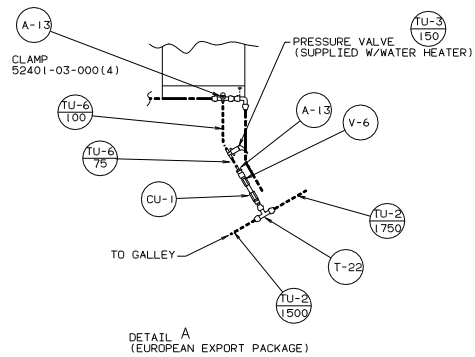
FOR WATER CALLOUTS SEE DWG NO. 116230-01-000

DATE	424RC2	SCALE	1/2" = 1'	NO.	1
REV		SCALE	1/2" = 1'	NO.	1
REV		SCALE	1/2" = 1'	NO.	1
REV		SCALE	1/2" = 1'	NO.	1

WATER SYSTEM INSTL

115603

REF: 107163



LEGEND	
HOT	—————
COLD	-----