

- SHOWER INSTL-ENCLOSURE
110539-01-000
- DRAIN
120981-01-CHT (US)
- STRAINER-TUB
65729-01-000 (CAN)
- SEALER
69640-01-000
- NUT
66435-01-000
- NUT-SLIP
66436-01-000
- WASHER
69735-01-000
- TAILPIECE
11069-02-000

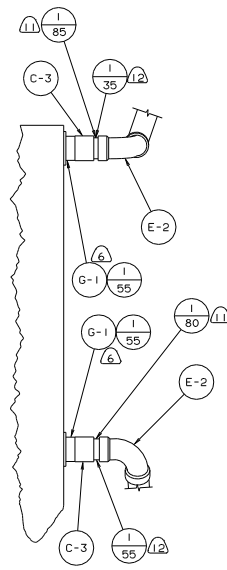
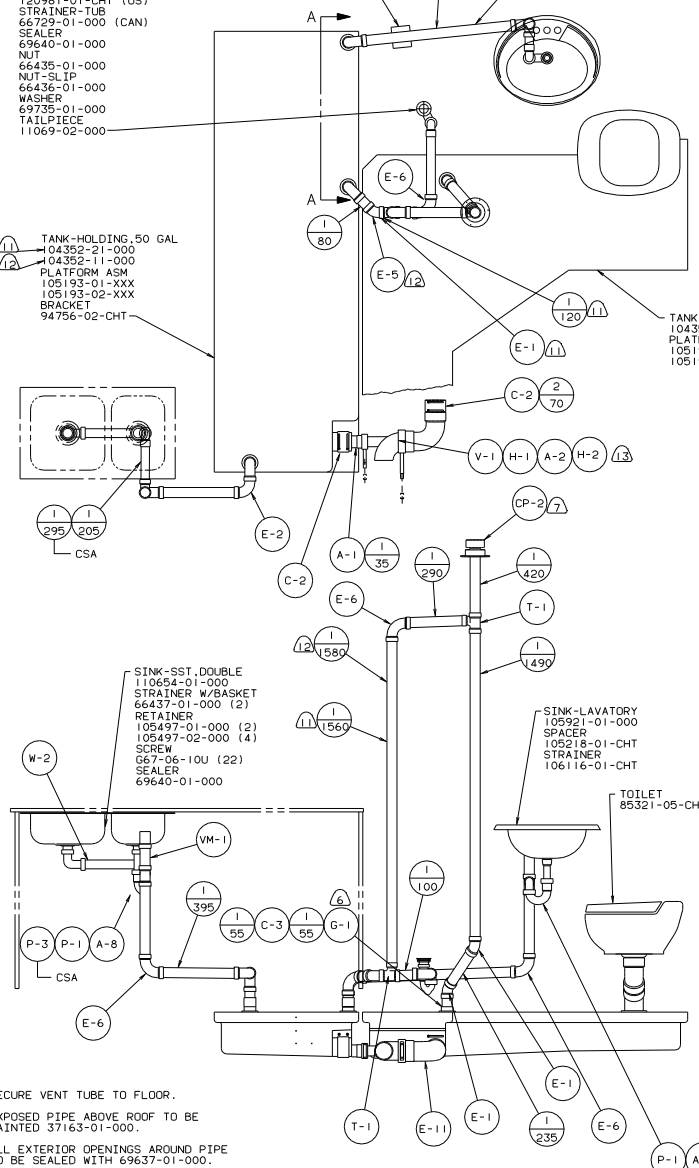
- TANK-HOLDING, 50 GAL
104352-11-000
- PLATFORM ASM
105193-01-XXX
- 105193-02-XXX
- BRACKET
94756-02-CHT

- TANK-HOLDING, 69 GAL
104350-09-000
- PLATFORM ASM
105193-03-XXX
- 105193-04-XXX

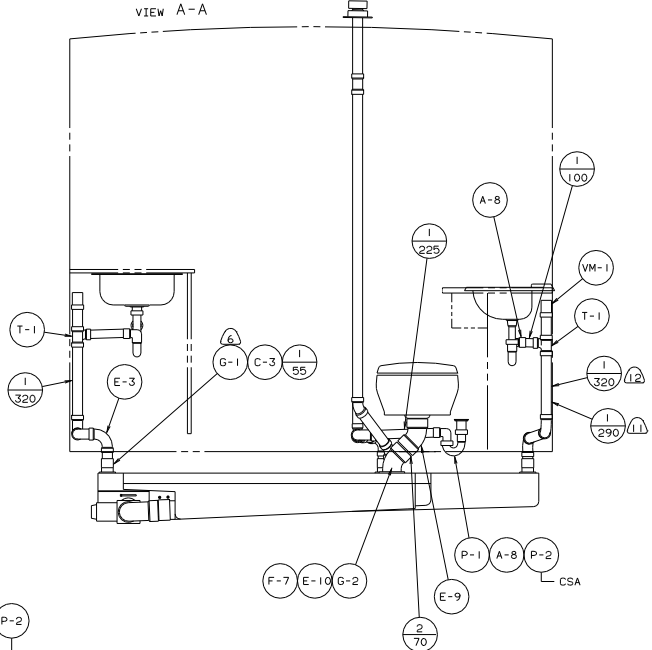
- SINK-SST, DOUBLE
110654-01-000
- STRAINER W/BASKET
66437-01-000 (2)
- RETAINER
105497-01-000 (2)
- 105497-02-000 (4)
- SCREW
0567-06-10U (22)
- SEALER
69640-01-000

- SINK-LAVATORY
105921-01-000
- SPACER
105218-01-CHT
- STRAINER
106116-01-CHT

TOILET
85321-05-CHT



VIEW A-A

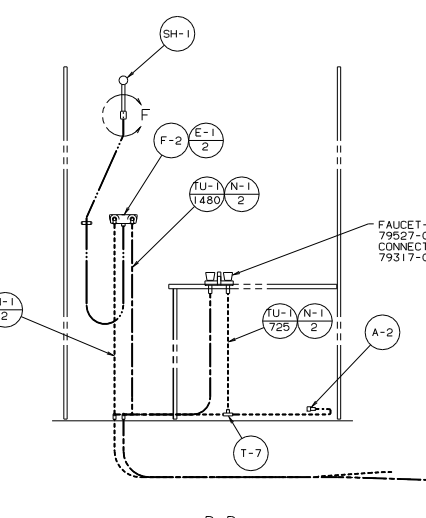
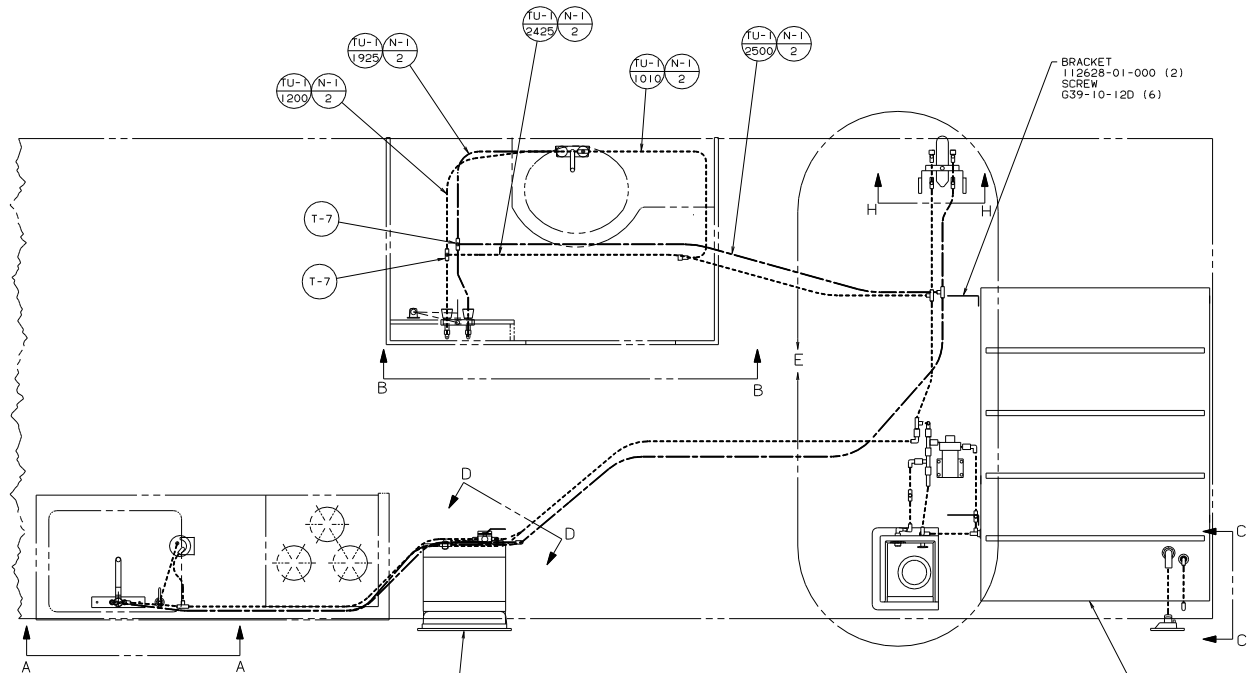


10. SECURE VENT TUBE TO FLOOR.
9. EXPOSED PIPE ABOVE ROOF TO BE PAINTED 37163-01-000.
8. ALL EXTERIOR OPENINGS AROUND PIPE TO BE SEALED WITH 69637-01-000.
7. VENT PIPE MUST BE PROJECTED 51 TO 64 MAXIMUM ABOVE ROOF FOR PROPER FIT AND FUNCTION.
6. SEE DRAWING 61607-01-000 FOR INSTALLATION OF GROMMET.
5. SEAL ALL AROUND SHOWER WITH SILICONE 78474-01-CHT.
4. FOR CANADIAN UNITS EACH HOLDING TANK SHALL HAVE A CSA APPROVAL STAMPED NEAR IAPMO APPROVAL.
3. ALL PIPE AND FITTINGS TO BE ASSEMBLED WITH SOLVENT 4020-01-000.
2. SLOPE OF TRAP MUST BE 6 PER 300 MINIMUM.
1. SLOPE OF HORIZONTAL PIPING TO BE 6 PER 300 MINIMUM.

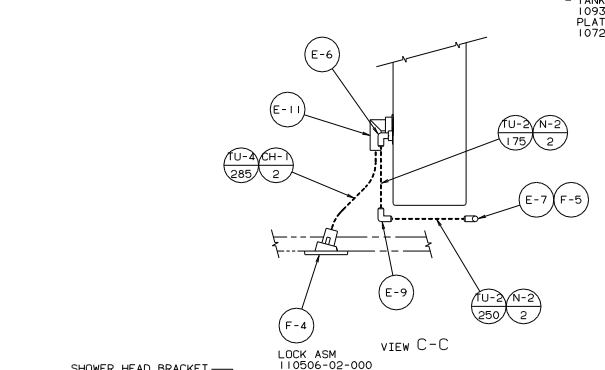
- ⑬ USE WITH JAPAN EXPORT PACKAGE.
- ⑫ NOT USED WITH WIE EXPORT PREP PACKAGE.
- ⑪ USE WITH WIE EXPORT PREP PACKAGE (NOT USED WITH TABLE AND CHAIRS).

(X-X) FOR DRAINAGE CALLOUTS SEE DWG NO. 116229-01-000

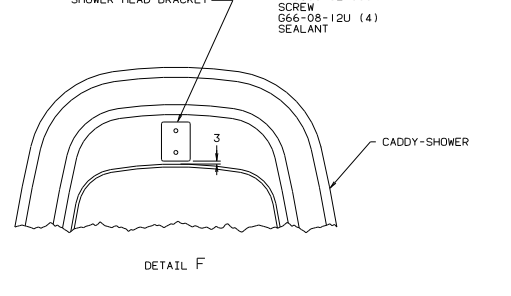
WINNEMAGO 94 M31R0	
DATE: M31R04	TITLE: DRAINAGE SYSTEM INSTL
REV: 1	REV: 1
BY: 1	BY: 1
CHECKED: 1	CHECKED: 1
DATE: 1	DATE: 1
SHEET: 1	OF: 1
110741	



VIEW B-B



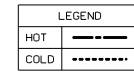
VIEW C-C



DETAIL F

NO	PART NUMBER	DESCRIPTION	QTY
W-1	91208-01-000	WASHER	1
V-6	110438-01-000	VALVE-CHECK, BRASS	1
V-5	77054-01-000	VALVE-1/2MPT X 1/2MPT X 1/4COMP	1
V-4	52960-03-000	VALVE-LINE DRAIN, 5/8FLX/5/8FL 16"	2
V-3	52960-02-000	VALVE-LINE DRAIN, 1/2FL X 1/2FL 16"	2
V-2	52960-01-000	VALVE-LINE DRAIN, 1/2FL X 1/2FL	1
V-1	46128-01-000	VALVE-DRAIN, 1/2FPT X 1/2FPT	1
TU-5	39800-04-000	TUBING-1/4"	1290
TU-4	79381-01-000	TUBING-1 1/4" ID	285
TU-3	74462-02-000	TUBING-3/8"	1485
TU-2	39800-02-000	TUBING-5/8"	25660
TU-1	39800-01-000	TUBING-1/2"	
T-18	93217-01-000	TEE-SWIVEL, 1/2FLX1/2FPTX1/2FL	
T-17	74463-03-000	TEE-1/2FLX1/2MPTX 1/2FL X 1/2FL	
T-16	74463-02-000	TEE-1/2FLX1/2MPTX 1/2FL X 1/2FL	
T-15	74463-01-000	TEE-1/2FLX 1/2FL X 1/2FL X 1/2FL	
T-14	57974-01-000	TEE-5/8FL X 1/2FL X 1/2FL	
T-13	57973-01-000	TEE-1/2FL X 5/8FL X 1/2FL	
T-12	55295-02-000	TEE-1/2FL X 5/8FL X 1/2MPT	
T-11	55295-01-000	TEE-5/8FL X 1/2FL X 1/2MPT	
T-10	55293-01-000	TEE-5/8FL X 5/8FL 1/2FL	
T-9	55292-01-000	TEE-5/8FL X 1/2FL X 5/8FL	
T-8	55291-01-000	TEE-5/8FL X 5/8FL X 5/8FL	
T-7	52958-01-000	TEE-1/2FL X 1/2FL X 1/2FL	10
T-6	52956-02-000	TEE-5/8FL X 5/8FL X 1/2MPT	1
T-5	52956-01-000	TEE-1/2FL X 1/2FL X 1/2MPT	1
T-4	52955-03-000	TEE-5/8FL X 1/2MPT X 5/8FL	
T-3	52955-02-000	TEE-5/8FL X 3/4MPT X 5/8FL	
T-2	52955-01-000	TEE-5/8FL X 1/2MPT X 1/2FL	
T-1	39798-01-000	TEE-1/2MPT X 1/2MPT X 1/2MPT	3
SH-1	103092-01-000	SHOWER HEAD	2
PW-1	98607-01-000	PUMP-WATER	1
N-3	52953-01-000	NUT-FAUCET, 1/2"FPT	18
N-2	52952-02-000	NUT-5/8" FL	52
N-1	52952-01-000	NUT-1/2" FL	
H-6	74463-03-000	HEADER-DRN, 1/2FX1/2MPTX1/2FX1/2FL	
H-5	93193-02-000	HEADER-1/2MPTX1/2FLX1/2FLX1/2MPT	
H-4	93193-01-000	HEADER-1/2FLX1/2FLX1/2FLX1/2MPT	
H-3	52961-03-000	HDR-DRN, 1/2MPTX1/2FX1/2FX1/2FL 16"	
H-2	52961-02-000	HEADER-DRN, 1/2MPTX1/2FX1/2FX1/2FL	
H-1	52961-01-000	HEADER-DRAIN, 1/2FX1/2FX1/2FX1/2FL	
F-5	77954-02-000	FILTER-SCREEN-WATER, IN-TANK	
F-4	81249-03-CHT	FILL-WATER, LOCKABLE	
F-3	110915-01-CHT	FILL-WATER, CITY	
F-2	79563-03-CHT	FAUCET-SHOWER	2
F-1	103106-01-000	FAUCET-EXTERNAL WATER 90°	
E-11	10219-01-000	ELBOW-PLAS 1 1/4MPTX1 1/4BARB	1
E-10	39808-03-000	ELBOW-1/2MPT X 1/2MPT	4
E-9	57457-02-000	ELBOW-5/8FL X 5/8FL	1
E-8	57457-01-000	ELBOW-1/2FL X 1/2FL	1
E-7	55290-01-000	ELBOW-1/2MPT X 5/8FL	7
E-6	52957-04-000	ELBOW-3/4MPT X 5/8FL	1
E-5	52957-03-000	ELBOW-1/4MPT X 1/2FL	
E-4	52957-02-000	ELBOW-1/2MPT X 1/2FL	3
E-3	52957-01-000	ELBOW-3/8MPT X 1/2FL	1
E-2	70924-01-000	ELBOW-SWIVEL, 1/2MPT X 1/2FPT	
E-1	65120-01-000	ELBOW-SWIVEL, 1/2FL X 2FPT	6
CU-6	101814-01-000	COUPLING-FEMALE, 1/2FPT X 1/2FPT	11
C-5	103798-01-000	CONNECTOR 1/4 OD X 3/8 MPT	1
C-4	98417-01-000	CONNECTOR-5/8FL X 1/2MPT	1
C-3	55294-01-000	CONNECTOR-1/2FL X 5/8FL	1
C-2	52959-03-000	CONNECTOR-1/2FL X 3/8MPT	1
C-1	52959-02-000	CONNECTOR-1/2FL X 1/2MPT	2
C-1	52959-01-000	CONNECTOR-1/2FL X 1/4MPT	1
CA-1	106217-01-CHT	COMPARTMENT ASM-SHOWER, EXT	
CH-2	7161-01-000	CLAMP-HOSE, SPRING	
CH-1	62401-02-000	CLAMP-HOSE, 1 1/2 - 2 1/2	2
CF-5	106258-02-000	CAP-INSERTABLE FLARE, 5/8"	
CF-4	106258-01-000	CAP-INSERTABLE FLARE, 1/2"	2
CF-3	98421-01-000	CAP-FLARE, BRASS, 5/8"	
CF-2	36522-02-000	CAP-FLARE, 1/2"	
CF-1	36522-01-000	CAP-FLARE, 3/8"	
A-5	10224-01-000	ADAPTER-3/8 MPT X 3/8 BARB	
A-4	44927-01-000	ADAPTER-1 1/4 MPT X 1 1/4 BARB	
A-3	98420-01-000	ADAPTER-SWIVEL, 5/8FL X 1/2FPT	1
A-2	79317-01-000	ADAPTER-SWIVEL, 1/2FL X 1/2FPT	1
A-1	52954-01-000	ADAPTER-NOSE CONE	1

- ③ USE WITHOUT MOTOR AID.
- ⑤ USE WITH MOTOR AID.
- ④ USE WITH REFRIGERATOR ICE MAKER.
- 3. ALL TUBING TO BE SECURED AT 1200 INTERVALS MAXIMUM WITH CLAMP 10495-01-000 AND SCREW G67-10-12B.
- 2. TUBING TO BE INSTALLED WITH SUFFICIENT SLOPE TO PROVIDE DRAINAGE TO NEAREST VALVE.
- 1. PLASTIC FITTINGS TO BE SEALED WITH SEALANT 84456-01-000.

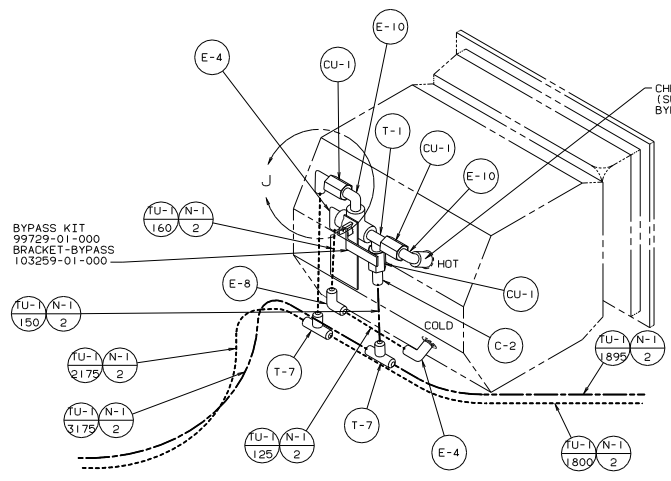


WINNEAGO 94 M31R0

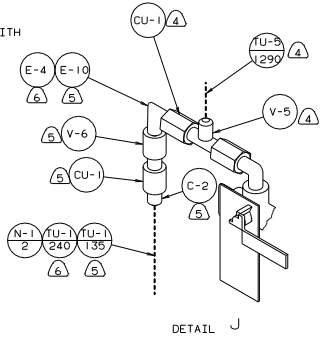
UNSPECIFIED TOLERANCES ARE: MATERIAL:
 HOLE DIA (IN) ± .015
 HOLE DIA (MM) ± .38
 HOLE PLUG (IN) ± .015
 HOLE PLUG (MM) ± .38
 HOLE DIA (IN) ± .015
 HOLE DIA (MM) ± .38
 HOLE DIA (IN) ± .015
 HOLE DIA (MM) ± .38

WINNEAGO WATER SYSTEM INSTL
 110642

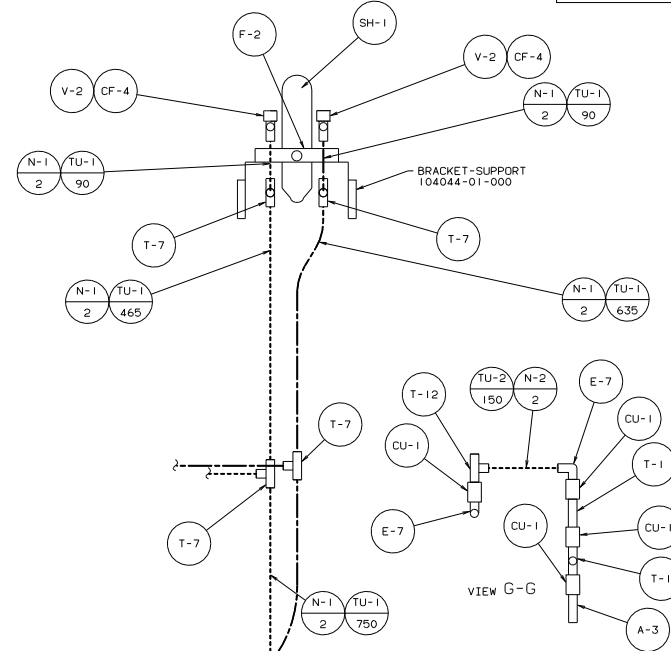
REF: 104739



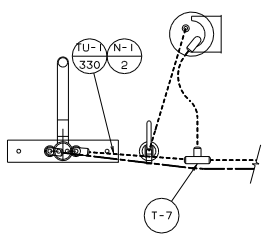
VIEW D-D



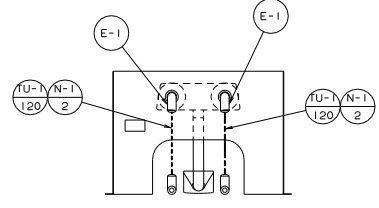
DETAIL J



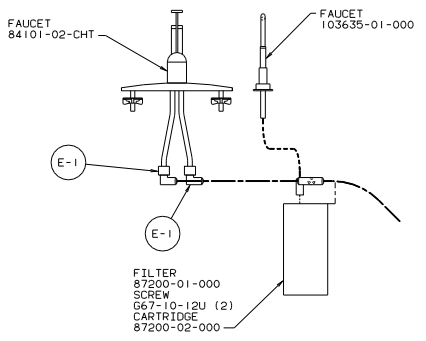
VIEW G-G



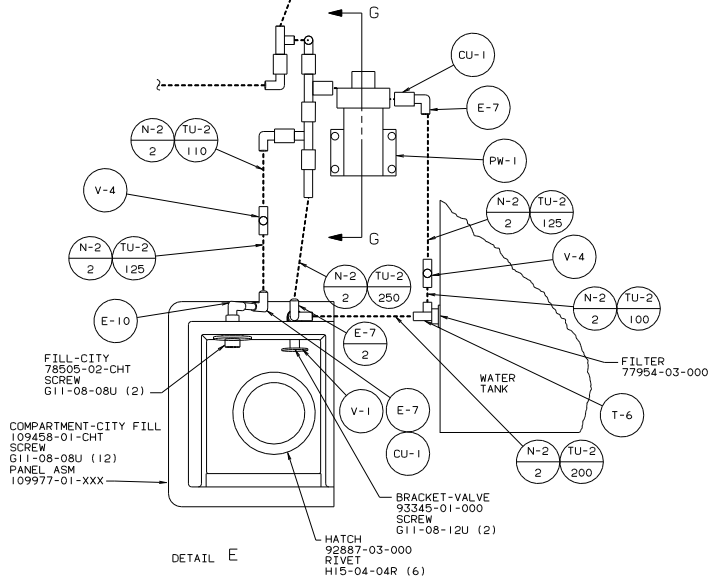
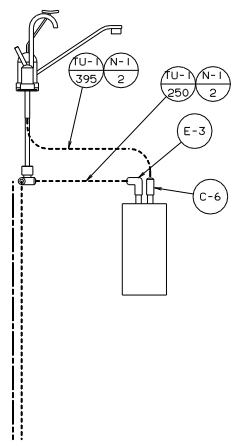
VIEW A-A



VIEW H-H



FILTER
87200-01-000
SCREW
G67-10-12U (2)
CARTRIDGE
87200-02-000



DETAIL E