

- (11) CLEAN AND APPLY ADHESIVE PROMOTER 87211-01-000 TO BOTH SURFACES AND BOND WITH TAPE.
- (10) SECURE VENT TUBES TO FLOOR.
- (9) VENT PIPE MUST PROJECT 51 MM MIN AND 63.5 MM MAX ABOVE ROOF FOR PROPER FIT AND FUNCTION.
- (8) SEE DWG 61607-01-000 FOR INSTL OF GROMMET.
- (7) SEAL ALL AROUND SHOWER WITH SILICONE 78474-01-CHT.
- 6. FOR CAN UNITS EACH HOLDING TANK SHALL HAVE A CSA APPROVAL STAMPED NEAR THE IAMPO APPROVAL.
- 5. EXPOSED PIPE ABOVE ROOF TO BE PAINTED 37163-01-000.
- 4. ALL EXTERIOR OPENINGS AROUND PIPE TO BE SEALED.
- 3. ALL PIPE AND FITTINGS TO BE ASSEMBLED WITH SOLVENT 4020-01-000.
- 2. SLOPE OF TRAP ARM MUST BE 6 PER 305.
- 1. SLOPE OF HORIZONTAL PIPING TO BE 6 PER 305 MIN.

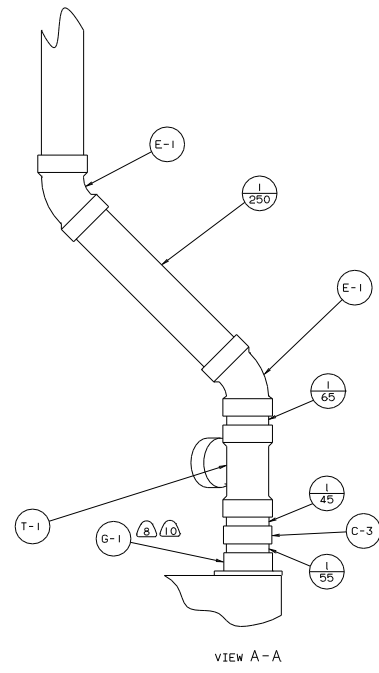
- (14) TRIM P-TRAP EXTENSION TO FIT.
- (13) USE WITHOUT SURROUND.
- (12) USE WITH SURROUND.



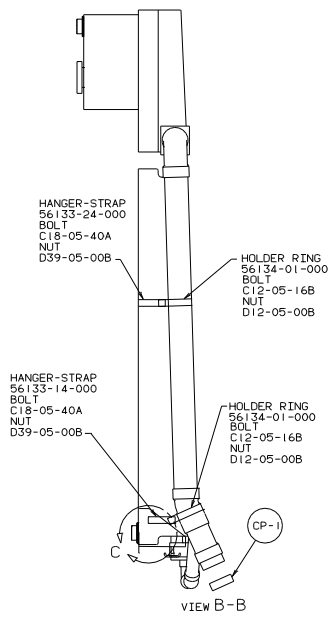
WINNERAGO 93 528RO

DATE	UNSPECIFIED TOLERANCES ARE MATERIAL
CHG#	WHOLE DIMS (1) ± 1.5
DWG	ONE-PLACE (1) .51
DWG	TWO-PLACE (1) .501
DWG	THREE-PLACE (1) .50
DWG	FOUR-PLACE (1) .50
DWG	FIVE-PLACE (1) .50
DWG	SIX-PLACE (1) .50
DWG	SEVEN-PLACE (1) .50
DWG	EIGHT-PLACE (1) .50
DWG	NINE-PLACE (1) .50
DWG	TEN-PLACE (1) .50
DWG	ELEVEN-PLACE (1) .50
DWG	TWELVE-PLACE (1) .50
DWG	THIRTEEN-PLACE (1) .50
DWG	FOURTEEN-PLACE (1) .50
DWG	FIFTEEN-PLACE (1) .50
DWG	SIXTEEN-PLACE (1) .50
DWG	SEVENTEEN-PLACE (1) .50
DWG	EIGHTEEN-PLACE (1) .50
DWG	NINETEEN-PLACE (1) .50
DWG	TWENTY-PLACE (1) .50

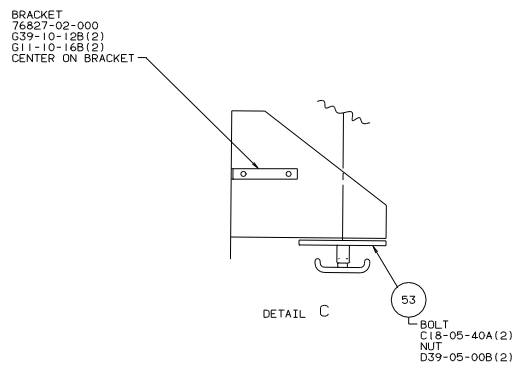
LAYOUT NO. 528RO TITLE: DRAINAGE SYSTEM INSTL
 DWG NO. 109530



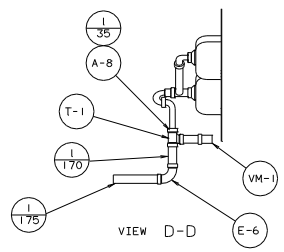
VIEW A-A



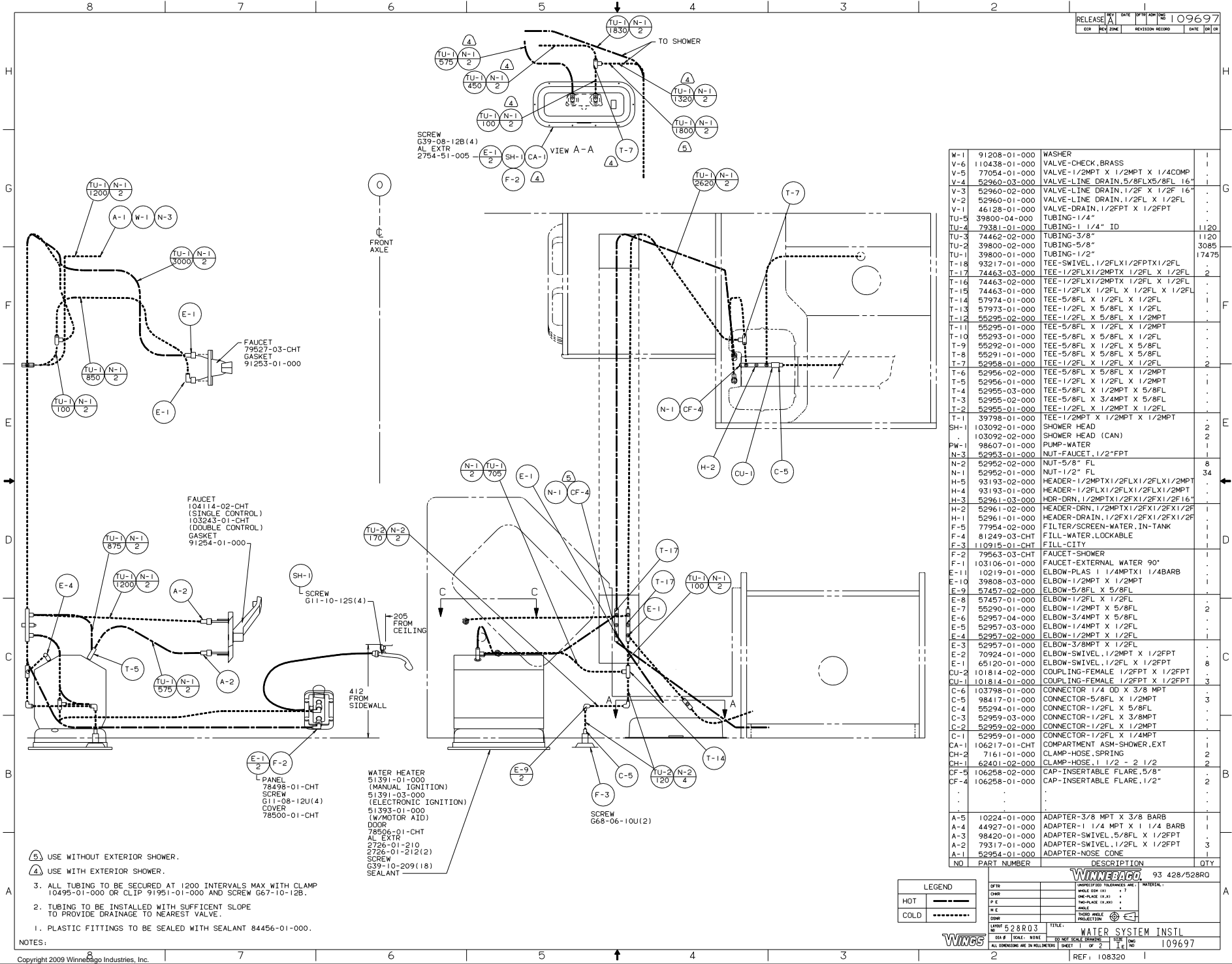
VIEW B-B



DETAIL C



VIEW D-D



SCREW
 G39-08-12B(4)
 AL EXTR
 2754-51-005

FAUCET
 79527-03-CHT
 GASKET
 91253-01-000

FAUCET
 104114-02-CHT
 (SINGLE CONTROL)
 103243-01-CHT
 (DOUBLE CONTROL)
 GASKET
 91254-01-000

WATER HEATER
 51391-01-000
 (MANUAL IGNITION)
 51391-03-000
 (ELECTRONIC IGNITION)
 51393-01-000
 (W/MOTOR AID)
 DOOR
 78506-01-CHT
 AL EXTR
 2726-01-210
 2726-01-212(2)
 SCREW
 G39-10-209(18)
 SEALANT

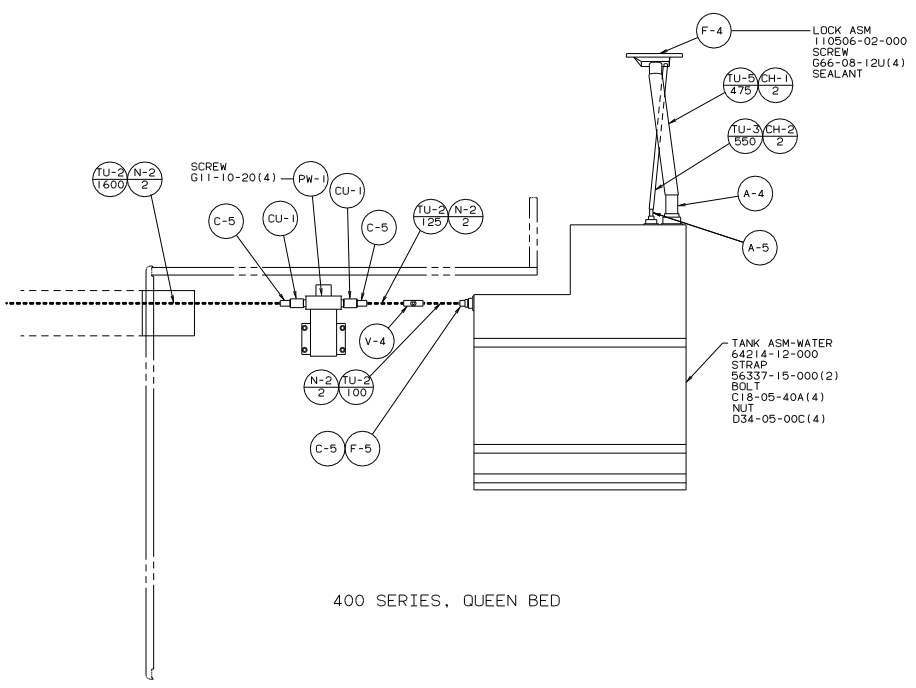
NO	PART NUMBER	DESCRIPTION	QTY
W-1	91208-01-000	WASHER	1
V-6	110436-01-000	VALVE-CHECK, BRASS	1
V-5	77054-01-000	VALVE-1/2MPT X 1/2MPT X 1/4COMP	1
V-4	52960-03-000	VALVE-LINE DRAIN, 5/8FLX5/8FL 16"	1
V-3	52960-02-000	VALVE-LINE DRAIN, 1/2FL X 1/2FL 16"	1
V-2	52960-01-000	VALVE-LINE DRAIN, 1/2FL X 1/2FL	1
V-1	46128-01-000	VALVE-DRAIN, 1/2FPT X 1/2FPT	1
TU-5	39800-04-000	TUBING-1/4"	1
TU-4	79381-01-000	TUBING-1 1/4" ID	1120
TU-3	74462-02-000	TUBING-3/8"	1120
TU-2	39800-02-000	TUBING-5/8"	3085
TU-1	39800-01-000	TUBING-1/2"	17475
T-18	93217-01-000	TEE-SWIVEL, 1/2FLX1/2FPTX1/2FL	1
T-17	74463-03-000	TEE-1/2FLX1/2MPTX1/2FL X 1/2FL	2
T-16	74463-02-000	TEE-1/2FLX1/2MPTX1/2FL X 1/2FL	1
T-15	74463-01-000	TEE-1/2FLX 1/2FL X 1/2FL X 1/2FL	1
T-14	57974-01-000	TEE-5/8FL X 1/2FL X 1/2FL	1
T-13	57973-01-000	TEE-1/2FL X 5/8FL X 1/2FL	1
T-12	55295-02-000	TEE-1/2FL X 5/8FL X 1/2MPT	1
T-11	55295-01-000	TEE-5/8FL X 1/2FL X 1/2MPT	1
T-10	55293-01-000	TEE-5/8FL X 5/8FL X 1/2FL	1
T-9	55292-01-000	TEE-5/8FL X 1/2FL X 5/8FL	1
T-8	55291-01-000	TEE-5/8FL X 5/8FL X 5/8FL	1
T-7	52958-01-000	TEE-1/2FL X 1/2FL X 1/2FL	2
T-6	52956-02-000	TEE-5/8FL X 5/8FL X 1/2MPT	1
T-5	52956-01-000	TEE-1/2FL X 1/2FL X 1/2MPT	1
T-4	52955-03-000	TEE-5/8FL X 1/2MPT X 5/8FL	1
T-3	52955-02-000	TEE-5/8FL X 3/4MPT X 5/8FL	1
T-2	52955-01-000	TEE-1/2MPT X 1/2MPT	1
T-1	57978-01-000	TEE-1/2MPT X 1/2MPT X 1/2MPT	1
SH-1	103092-01-000	SHOWER HEAD	2
.	103092-02-000	SHOWER HEAD (CAN)	2
PW-1	98607-01-000	PUMP-WATER	1
N-3	52953-01-000	NUT-FAUCET, 1/2"FPT	1
N-2	52952-02-000	NUT-5/8" FL	8
N-1	52952-01-000	NUT-1/2" FL	34
H-5	93193-02-000	HEADER-1/2MPTX1/2FLX1/2FLX1/2MPT	1
H-4	93193-01-000	HEADER-1/2FLX1/2FLX1/2FLX1/2MPT	1
H-3	52961-03-000	HDR-DRN, 1/2MPTX1/2FX1/2FX1/2F16"	1
H-2	52961-02-000	HEADER-DRN, 1/2MPTX1/2FX1/2FX1/2F	1
H-1	52961-01-000	HEADER-DRAIN, 1/2FX1/2FX1/2FX1/2F	1
F-5	77954-02-000	FILTER/SCREEN-WATER, IN-TANK	1
F-4	81249-03-CHT	FILL-WATER, LOCKABLE	1
F-3	110915-01-CHT	FILL-CITY	1
F-2	79563-03-CHT	FAUCET-SHOWER	1
F-1	103106-01-000	FAUCET-EXTERNAL WATER 90°	1
E-11	10219-01-000	ELBOW-PLAS 1 1/4MPTX1 1/4BARB	1
E-10	39808-03-000	ELBOW-1/2MPT X 1/2MPT	1
E-9	57457-02-000	ELBOW-5/8FL X 5/8FL	1
E-8	57457-01-000	ELBOW-1/2FL X 1/2FL	1
E-7	55290-01-000	ELBOW-1/2MPT X 5/8FL	2
E-6	52957-04-000	ELBOW-3/4MPT X 5/8FL	1
E-5	52957-03-000	ELBOW-1/4MPT X 1/2FL	1
E-4	52957-02-000	ELBOW-1/2MPT X 1/2FL	1
E-3	52957-01-000	ELBOW-3/8MPT X 1/2FL	1
E-2	70924-01-000	ELBOW-SWIVEL, 1/2MPT X 1/2FPT	8
E-1	65120-01-000	ELBOW-SWIVEL, 1/2FL X 1/2FPT	1
CU-2	101814-02-000	COUPLING-FEMALE, 1/2FPT X 1/2FPT	1
CU-1	101814-01-000	COUPLING-FEMALE, 1/2FPT X 1/2FPT	3
C-6	103798-01-000	CONNECTOR 1/4 OD X 3/8 MPT	1
C-5	98417-01-000	CONNECTOR-5/8FL X 1/2MPT	3
C-4	55294-01-000	CONNECTOR-1/2FL X 5/8FL	1
C-3	52959-03-000	CONNECTOR-1/2FL X 3/8MPT	1
C-2	52959-02-000	CONNECTOR-1/2FL X 1/2MPT	1
CA-1	52959-01-000	CONNECTOR-1/2FL X 1/4MPT	1
CA-1	106217-01-CHT	COMPARTMENT ASM-SHOWER, EXT	1
CH-2	7161-01-000	CLAMP-HOSE, SPRING	2
CH-1	62401-02-000	CLAMP-HOSE, 1 1/2 - 2 1/2	2
CF-5	106258-02-000	CAP-INSERTABLE FLARE, 5/8"	1
CF-4	106258-01-000	CAP-INSERTABLE FLARE, 1/2"	2
A-5	10224-01-000	ADAPTER-3/8 MPT X 3/8 BARB	1
A-4	44927-01-000	ADAPTER-1 1/4 MPT X 1 1/4 BARB	1
A-3	98420-01-000	ADAPTER-SWIVEL, 5/8FL X 1/2FPT	1
A-2	79317-01-000	ADAPTER-SWIVEL, 1/2FL X 1/2FPT	3
A-1	52954-01-000	ADAPTER-NOSE CONE	1

- 3. ALL TUBING TO BE SECURED AT 1200 INTERVALS MAX WITH CLAMP 10495-01-000 OR CLIP 91951-01-000 AND SCREW G67-10-12B.
- 2. TUBING TO BE INSTALLED WITH SUFFICIENT SLOPE TO PROVIDE DRAINAGE TO NEAREST VALVE.
- 1. PLASTIC FITTINGS TO BE SEALED WITH SEALANT 84456-01-000.

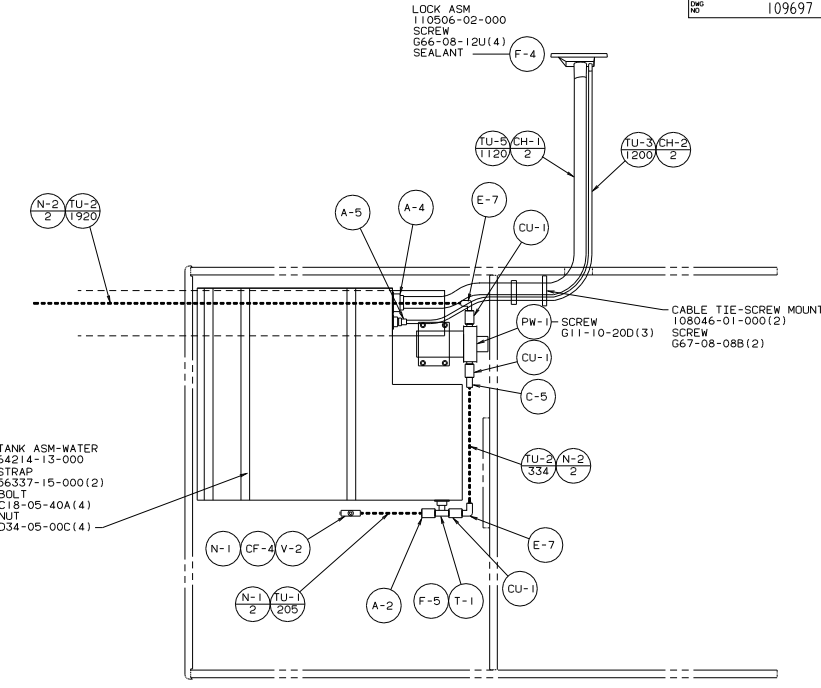
3 USE WITHOUT EXTERIOR SHOWER.
 4 USE WITH EXTERIOR SHOWER.

LEGEND	
HOT	-----
COLD	-----

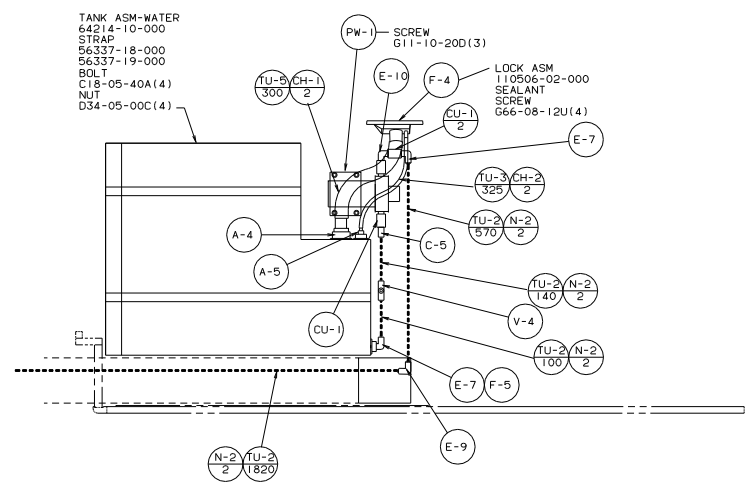
QTY	UNSPECIFIED TOLERANCES ARE:	MATERIAL
CHP	FINISH (16.00)	
FL	FINISH (16.00)	
FL	FINISH (16.00)	
FL	FINISH (16.00)	
FL	FINISH (16.00)	
FL	FINISH (16.00)	
FL	FINISH (16.00)	
FL	FINISH (16.00)	



400 SERIES, QUEEN BED



500 SERIES, QUEEN BED



400 AND 500 SERIES TWIN BED

