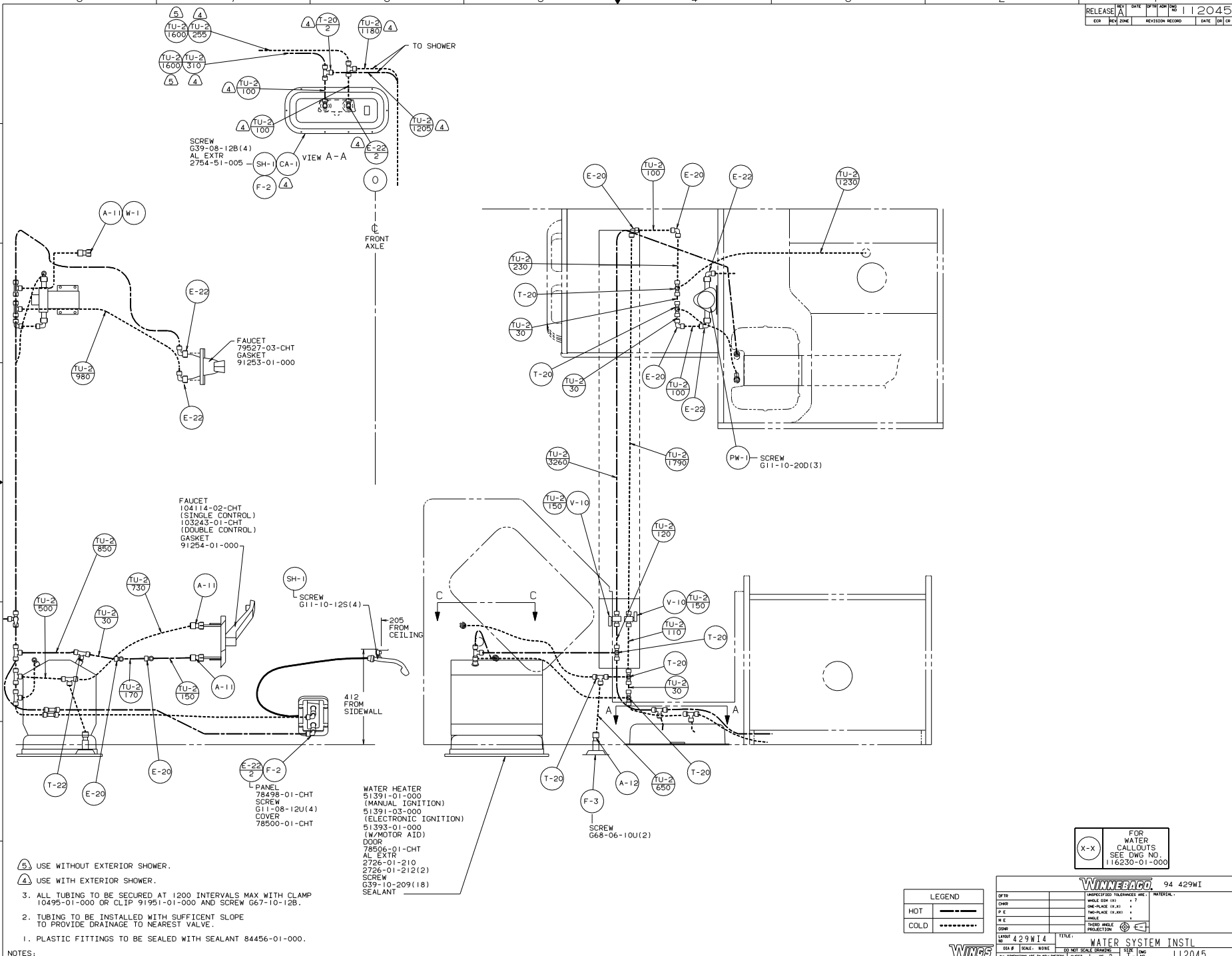


- 10 SECURE VENT TUBES TO FLOOR WITH BRACKET 95061-01-000(2). CLAMP 62401-02-000.
- VENT PIPE MUST PROJECT 51 MM MIN AND 63.5 MM MAX ABOVE ROOF FOR PROPER FIT AND FUNCTION.
8. SEE DWG 61607-01-000 FOR INSTL OF GROMMET.
7. SEAL ALL AROUND SHOWER WITH SILICONE.
6. FOR CAN UNITS EACH HOLDING TANK SHALL HAVE A CSA APPROVAL STAMPED NEAR THE IAMPO APPROVAL.
5. EXPOSED PIPE ABOVE ROOF TO BE PAINTED 37163-01-000.
4. ALL EXTERIOR OPENINGS AROUND PIPE TO BE SEALED WITH 110744-01-000.
3. ALL PIPE AND FITTINGS TO BE ASSEMBLED WITH SOLVENT 4020-01-000.
2. SLOPE OF TRAP ARM MUST BE 6 PER 305.
1. SLOPE OF HORIZONTAL PIPING TO BE 6 PER 305 MIN.

⚠ TRIM P-TRAP EXTENSION TO FIT.

X-X FOR DRAINAGE CALLOUTS SEE DWG NO. 116229-01-000

WINNIEGAGO 94 429W1	
DATE: 429W14	SCALE: 0 1
TITLE: DRAINAGE SYSTEM INSTL	SHEET: 1 E
UNSPECIFIED TOLERANCES ARE:	MATERIAL:
FINISH: 12.5	
ANGLE: 12.5	
WELD: 12.5	
DRILL: 12.5	
ALL DIMENSIONS ARE IN MILLIMETERS	1 OF 1



SCREW
 G39-08-12B(4)
 AL EXTR
 2754-51-005

FAUCET
 79527-03-CHT
 GASKET
 91253-01-000

FAUCET
 104114-02-CHT
 (SINGLE CONTROL)
 103243-01-CHT
 (DOUBLE CONTROL)
 GASKET
 91254-01-000

WATER HEATER
 51391-01-000
 (MANUAL IGNITION)
 51391-03-000
 (ELECTRONIC IGNITION)
 51393-01-000
 (W/MOTOR AID)
 DOOR
 78506-01-CHT
 AL EXTR
 2726-01-210
 2726-01-212(2)
 SCREW
 G39-10-209(18)
 SEALANT

- ⑤ USE WITHOUT EXTERIOR SHOWER.
- ④ USE WITH EXTERIOR SHOWER.
- 3. ALL TUBING TO BE SECURED AT 1200 INTERVALS MAX WITH CLAMP 10495-01-000 OR CLIP 91951-01-000 AND SCREW G67-10-12B.
- 2. TUBING TO BE INSTALLED WITH SUFFICIENT SLOPE TO PROVIDE DRAINAGE TO NEAREST VALVE.
- 1. PLASTIC FITTINGS TO BE SEALED WITH SEALANT 84456-01-000.

FOR WATER CALLOUTS SEE DWG NO. 116230-01-000

WINNEBAGO 94 429W1

LEGEND	
HOT	—————
COLD	-----

QTY	UNSPECIFIED TOLERANCES ARE:	MATERIAL
CHRP	WHOLE DIM (IN)	F
F/E	ONE-PLACE (IN.XI)	F
F/E	TWO-PLACE (IN.XXX)	F
ANG	ANGLE	F
CHRP	THRU HOLE PROJECTION	F

LANP# 429W14 TITLE: WATER SYSTEM INSTL
 DIA # SCALE: NONE 30 NET SCALE DRAWING SHEET 1 OF 2
 ALL DIMENSIONS ARE IN MILLIMETERS

