

- (12) ROUTE CABLES THRU CHASSIS RAIL IN THIS AREA. FOLLOW ORIGINAL CABLE PATHS INSIDE RAIL.
 - (11) TRIM CABLE TO 400MM. ADD TERMINAL 8348-01-000.
 - (10) TRIM CABLE TO 600MM. ADD TERMINAL 8348-01-000.
 - (9) SUPPLIED WITH CHASSIS.
 - (8) SEE WIRING INSTL-FRONT END FOR WIRING CONNECTIONS.
 - (7) COVER WITH CONDUIT-41953-10-000 & 41953-11-000 AS REQUIRED.
 - (6) USE WIRE ASM-EXTENSION WITH EXTENDED CHASSIS ONLY.
 - (5) CLAMP 10497-03-000, SCREW 639-08-12B.
 - (4) CLAMP 83609-01-000, SCREW 639-08-12B.
 - (3) CLAMP 83610-01-000, SCREW 639-08-12B.
2. SECURE CONDUIT 41953-01-000, 41953-02-000 AND 41953-03-000 OVER ALL WIRES IN CONTACT WITH SHARP EDGES.
1. LEGEND: — WINNEBAGO, - - - - - CABLE, CHASSIS SUPPLIED.

- (16) USE TWO NUTS HERE TO ACCOUNT FOR BATTERY HEIGHT DIFFERENCE.
- (13) ROUTE WIRES & CABLE INSIDE CHASSIS RAIL AT THIS POINT & TO THE REAR.
- (14) SECURE SO WIRES DO NOT CONTACT EXHAUST.
- (13) ROUTE WIRES & CABLE OVER SPRING HANGER & ON TOP OF CHASSIS RAIL AT THIS POINT.

DETAIL E

CHEVY

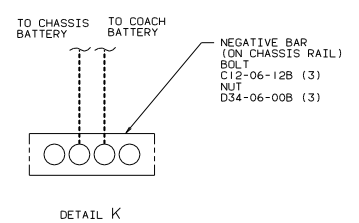
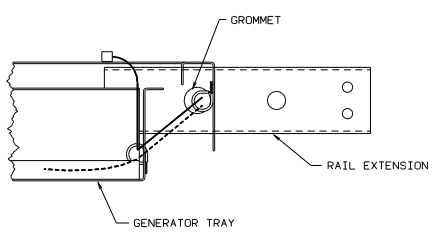
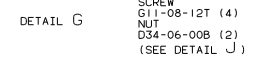
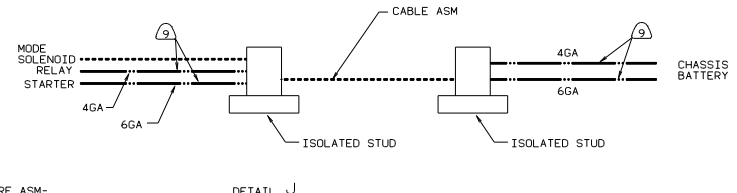
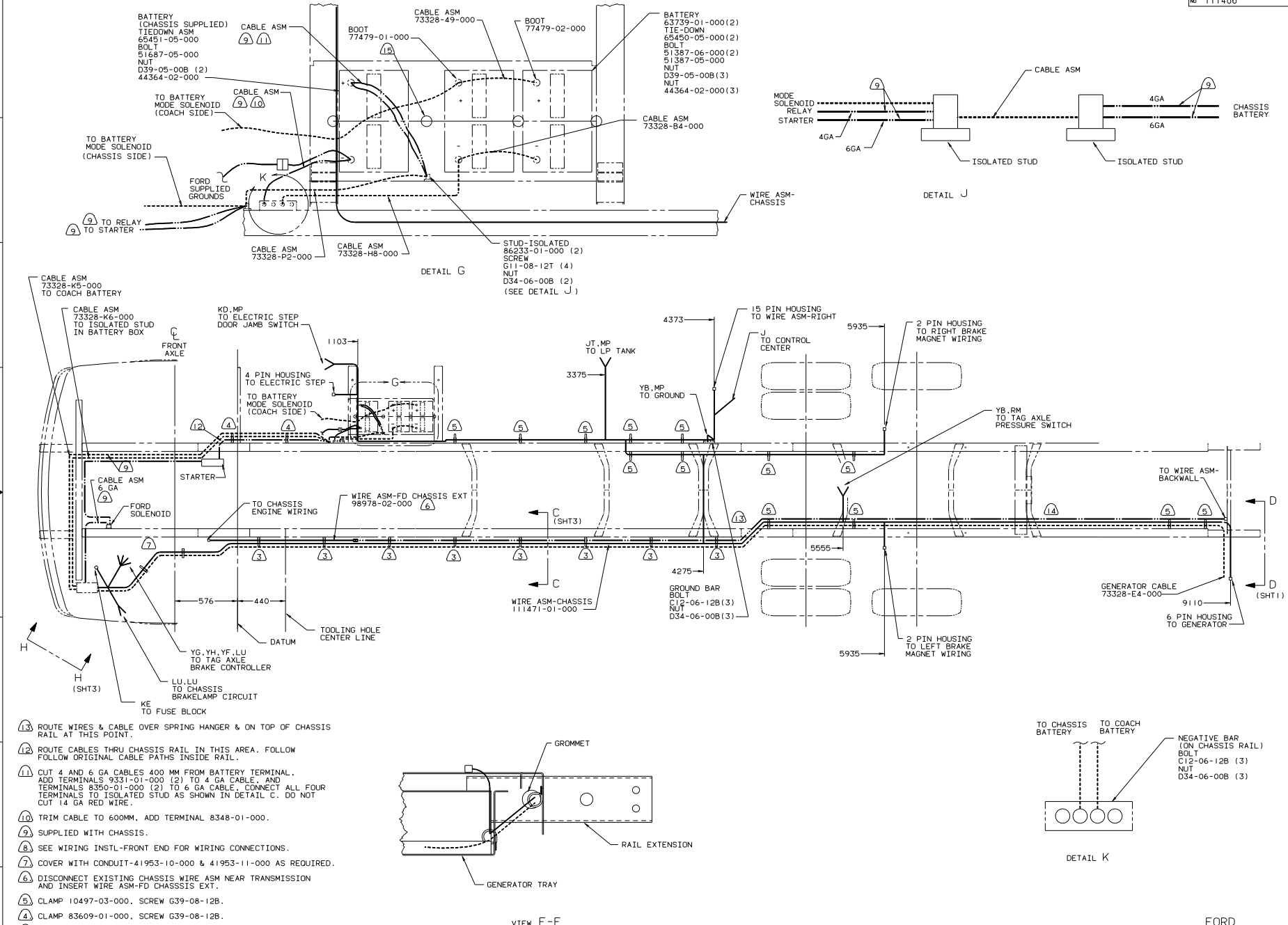
OPIN	UNSPECIFIED TOLERANCES ARE:	MATERIAL
CHRP	ANGLE DIM (1:1)	1:1
FR	ONE-PLACE (1:1)	1:1
FR	ONE-PLACE (1:1)	1:1
FR	ANGLE	1:1
FR	TRUSS ANGLE	1:1
FR	PROJECTION	1:1

WINNEBAGO 94 G37RW

WIRING INSTL-CHASSIS

DATE: 11/14/86

11486



- ⑬ ROUTE WIRES & CABLE OVER SPRING HANGER & ON TOP OF CHASSIS RAIL AT THIS POINT.
- ⑭ ROUTE CABLES THRU CHASSIS RAIL IN THIS AREA. FOLLOW ORIGINAL CABLE PATHS INSIDE RAIL.
- ⑮ CUT 4 AND 6 GA CABLES 400 MM FROM BATTERY TERMINAL. ADD TERMINALS 9331-01-000 (2) TO 4 GA CABLE, AND TERMINALS 8350-01-000 (2) TO 6 GA CABLE. CONNECT ALL FOUR TERMINALS TO ISOLATED STUD AS SHOWN IN DETAIL C. DO NOT CUT 14 GA RED WIRE.
- ⑯ TRIM CABLE TO 600MM, ADD TERMINAL 8348-01-000.
- ⑰ SUPPLIED WITH CHASSIS.
- ⑱ SEE WIRING INSTL-FRONT END FOR WIRING CONNECTIONS.
- ⑲ COVER WITH CONDUIT-41953-10-000 & 41953-11-000 AS REQUIRED.
- ⑳ DISCONNECT EXISTING CHASSIS WIRE ASM NEAR TRANSMISSION AND INSERT WIRE ASM-FD CHASSIS EXT.
- ㉑ CLAMP 10497-03-000, SCREW G39-08-12B.
- ㉒ CLAMP 83609-01-000, SCREW G39-08-12B.
- ㉓ CLAMP 83610-01-000, SCREW G39-08-12B.

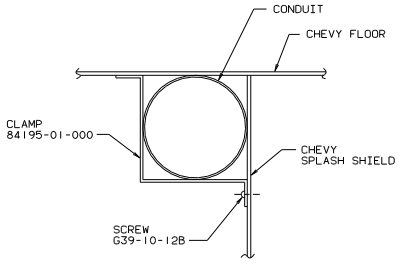
2. SECURE CONDUIT 41953-01-000, 41953-02-000 AND 41953-03-000 OVER ALL WIRES IN CONTACT WITH SHARP EDGES.

1. LEGEND: — WINNEBAGO, - - - - - CABLE, ——— CHASSIS SUPPLIED.

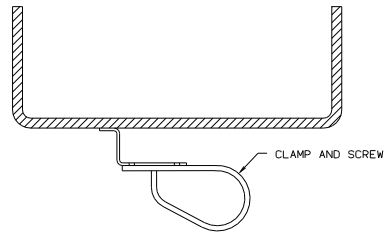
- ⑰ USE TWO NUTS HERE TO ACCOUNT FOR BATTERY HEIGHT DIFFERENCE.
- ⑱ ROUTE WIRES & CABLE INSIDE CHASSIS RAIL AT THIS POINT AND TO THE REAR.

FORD
94 G37RW

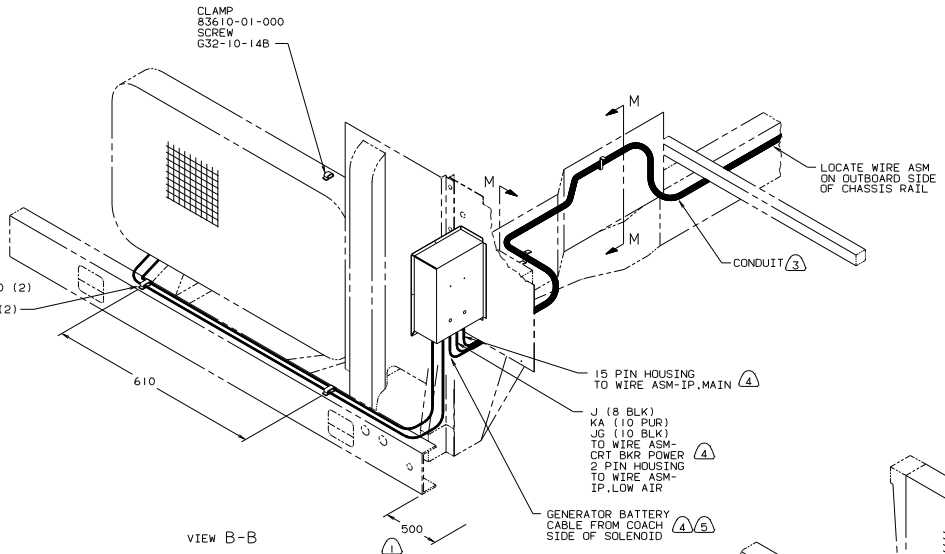
TITLE: WIRING INSTL-CHASSIS	
30 NET SCALE DRAWING	REV 1
SHEET 2 OF 3	111486



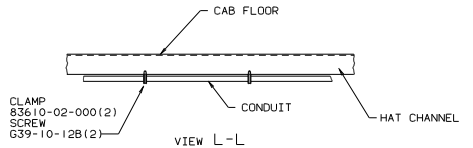
VIEW M-M



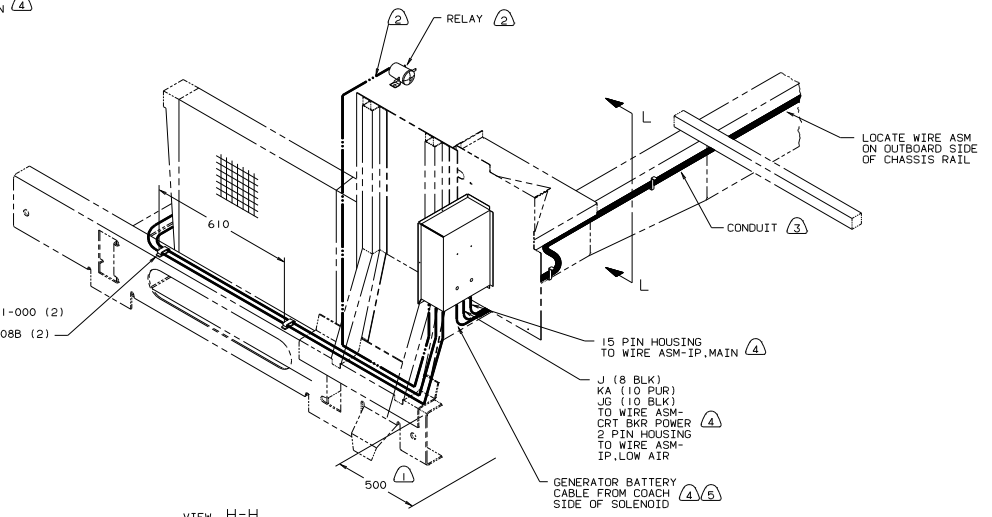
VIEW C-C



VIEW B-B



VIEW L-L



VIEW H-H

- 5. CONNECT CABLES TO COACH SIDE OF BATTERY DISCONNECT WHEN BATTERY DISCONNECT IS USED.
- 4. FOR ADDITIONAL INFORMATION SEE WIRING INSTALATION FRONT END.
- 3. COVER WITH CONDUIT 41953-10-000 AND 41953-11-000 AS REQUIRED.
- 2. SUPPLIED WITH CHASSIS.
- 1. LAY BATTERY AND GENERATOR CABLES TO THIS DIMENSION FROM END OF CROSSMEMBER TO START INSTALLATION.

NOTES: