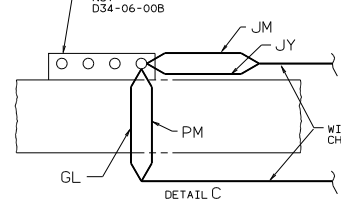
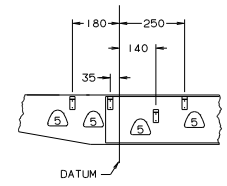


- 14 BATTERY CABLES MUST BE INSTALLED TO STARTER MOTOR BEFORE ENGINE WIRING HARNESS AND ROUTED IN SUCH A MANNER AS TO PREVENT ANY POSSIBLE DEGRADATION FROM EXHAUST SYSTEM.
- 13 REQUIRED FOR STRETCHED CHASSIS.
- 12 COVER EDGE OF HOLE THROUGH BATTERY BOX WITH TRIM-VINYL 72368-02-000.
- 11 TRIM CABLE TO 400MM, ADD TERMINAL 8348-01-000.
- 10 TRIM CABLE TO 800MM, ADD TERMINAL 8348-01-000.
- 9 SUPPLIED WITH CHASSIS.
- 8 SEE WIRING INSTL-FRONT END FOR ADDITIONAL INFORMATION.
- 7 CLAMP 83610-01-000, SCREW G11-10-16B.
- 6 CLAMP 10497-01-000, SCREW G11-10-16B.
- 5 CLAMP 10497-03-000, SCREW G11-04-32B, NUT D34-04-00B.
- 4 CLAMP 83609-01-000, SCREW G11-10-16B.
3. ALL DIMENSIONS ARE FROM DATUM UNLESS OTHERWISE SPECIFIED.
2. SECURE CONDUIT 41953-01-000, 41953-02-000 AND 41953-03-000 OVER ALL WIRES IN CONTACT WITH SHARP EDGES.
1. LEGEND: — WINNEBAGO, - - - - - CABLE, — CHASSIS SUPPLIED.

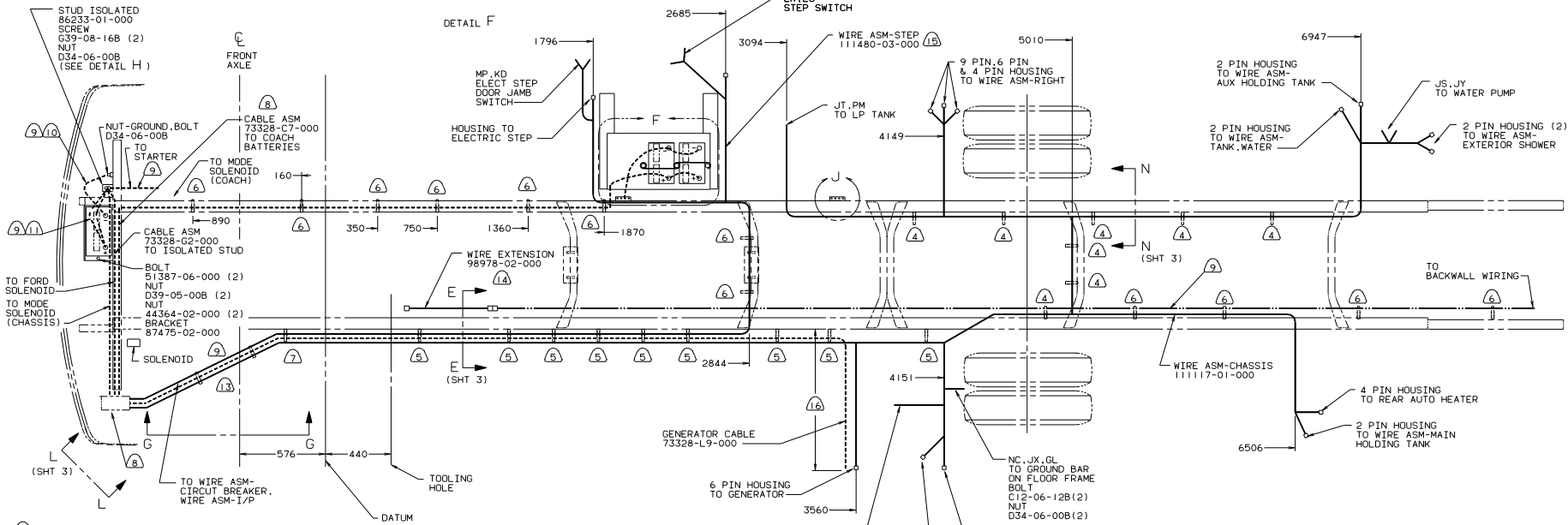
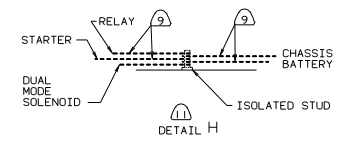
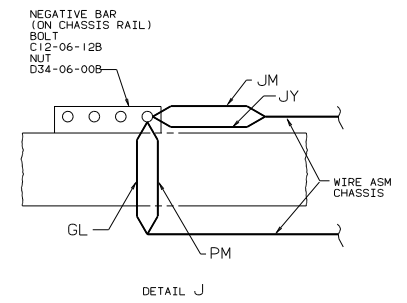
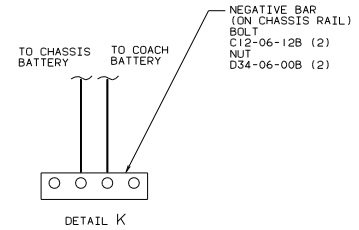
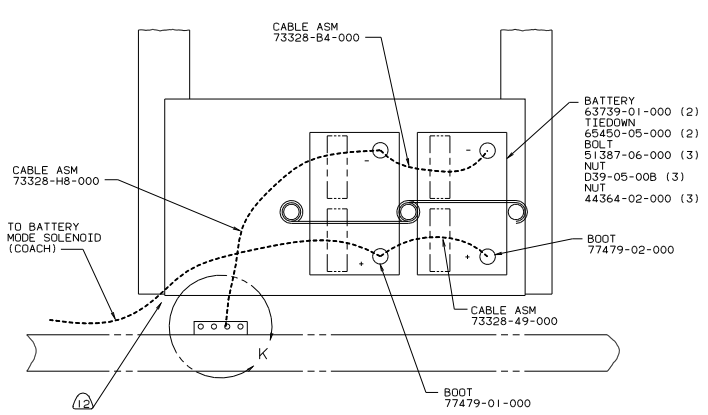


- 13 USE TWO NUTS HERE TO ACCOUNT FOR BATTERY HEIGHT DIFFERENCE.
- 17 USE 950 DIMENSION FOR ONAN GENERATOR AND 1350 DIMENSION FOR KOHLER GENERATOR.
- 16 USE WITH ELECTRIC STEP.
- 15 COVER WITH CONDUIT 41953-09-.10-11-000 AS REQUIRED.



GM

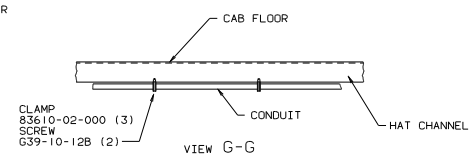
WINNEBAGO		94 F33R0
OPTN	UNSPECIFIED TOLERANCES ARE:	MATERIAL
CHRP	FRAMES 1/16"	
PLT	ONE-PIECE 1/16"	
PLT	TWO-PIECE 1/16"	
PLT	ANGLE	
CONP	TRUSS ANGLE	
CONP	PRODUCTION	
LANP# F33R04	TITLE: WIRING INSTL-CHASSIS	
REV#	SCALE: NONE	DO NOT SCALE DRAWING
ALL DIMENSIONS ARE IN MILLIMETERS	SHEET 1 OF 3	DATE 11/11/11



- 14 REQUIRED FOR STRETCHED CHASSIS.
 - 13 COVER WITH CONDUIT 41953-09,-10,-11-000 AS REQUIRED.
 - 12 COVER EDGE OF HOLE THROUGH BATTERY BOX WITH TRIM-VINYL 72368-02-000.
 - 11 CUT 4 & 6 GA CABLES 400MM FROM BATTERY TERMINAL, ADD TERMINALS 8331-01-000(2) TO 4 GA & TERMINAL 8350-01-000(2) TO 6 GA CABLE. CONNECTS ALL 4 TERMINALS TO ISOLATED STUD AS SHOWN IN DETAIL C. DO NOT CUT 14GA RED WIRE.
 - 10 TRIM CABLE TO 800MM. ADD TERMINAL 8348-01-000.
 - 9 SUPPLIED WITH CHASSIS.
 - 8 SEE WIRING INSTL-FRONT END FOR ADDITIONAL INFORMATION.
 - 7 CLAMP 83610-02-000, SCREW G11-10-16B.
 - 6 CLAMP 10497-01-000, SCREW G11-10-16B.
 - 5 CLAMP 83610-01-000, SCREW G11-10-16B.
 - 4 CLAMP 83609-01-000, SCREW G11-10-16B.
3. ALL DIMENSIONS ARE FROM DATUM UNLESS OTHERWISE SPECIFIED.
 2. SECURE CONDUIT 41953-01-000, 41953-02-000 AND 41953-03-000 OVER ALL WIRES IN CONTACT WITH SHARP EDGES.

16 USE 950 DIMENSION FOR ONAN GENERATOR AND 1350 DIMENSION FOR KOHLER GENERATOR.

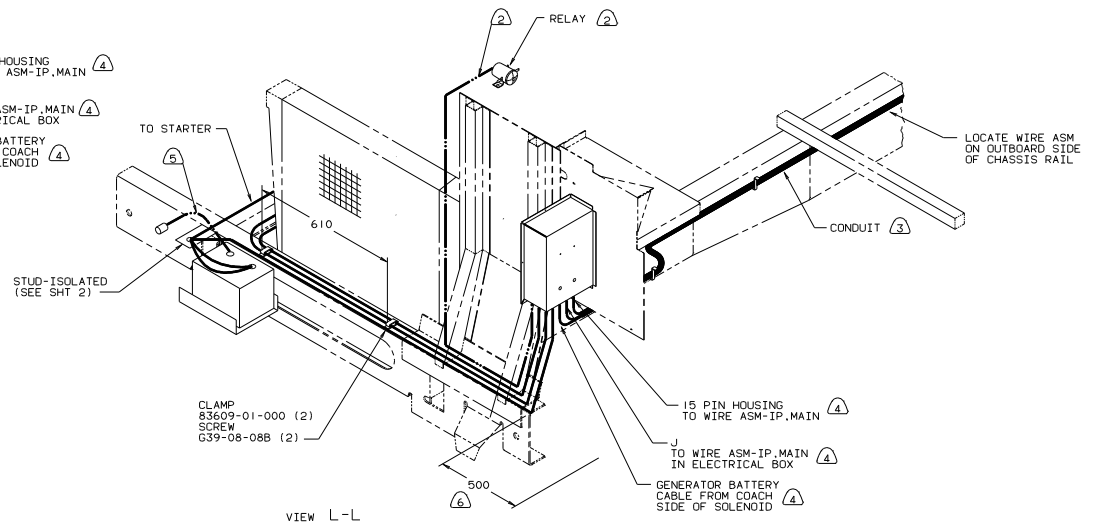
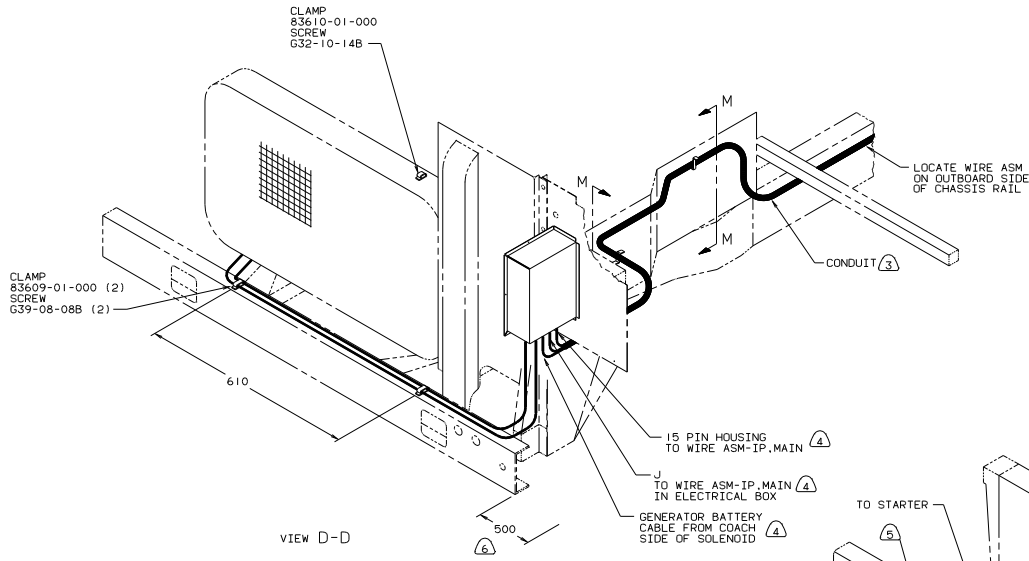
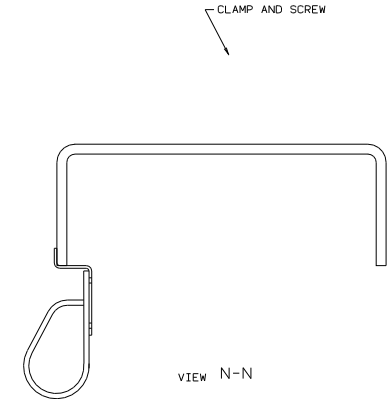
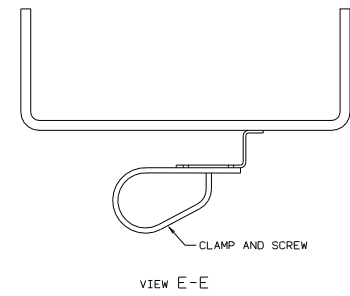
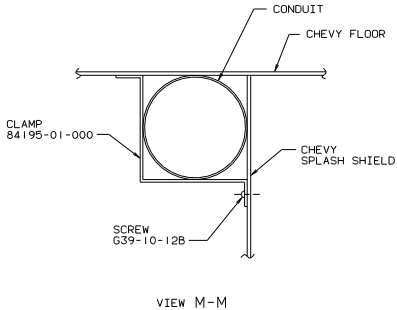
1. LEGEND: — WINNEBAGO, - - - - - CABLE, ——— CHASSIS SUPPLIED. 15 USE WITH ELECTRIC STEP.



FORD

94 F33RQ

TITLE: WIRING INSTL-CHASSIS			
30	NO	SCALE	DATE
2	1	2	1
SHEET 2 OF 3			11116



- (6) LAY BATTERY AND GENERATOR CABLE TO THIS DIMENSION FROM END OF CHASSIS CROSSMEMBER TO START INSTALLATION.
- (5) TRIM CABLE TO 800MM, ADD TERMINAL 8348-01-000.
- (4) SEE WIRING INSTL-FRONT END FOR ADDITIONAL INFORMATION.
- (3) COVER WITH CONDUIT 41953-09,-10,-11-000 AS REQUIRED.
2. SECURE CONDUIT 41953-01-000, 41953-02-000 AND 41953-03-000 OVER ALL WIRES IN CONTACT WITH SHARP EDGES.
1. LEGEND: — WINNEBAGO, - - - - - CABLE, ——— CHASSIS SUPPLIED.
- NOTES: