

- 1. SLOPE OF HORIZONTAL PIPING TO BE 6 PER 300 MINIMUM.
- 2. SLOPE OF TRAP MUST BE 6 PER 300 MINIMUM.
- 3. ALL PIPE AND FITTINGS TO BE ASSEMBLED WITH SOLVENT WASTE 4020-01-000.
- 4. FOR CANADIAN UNITS EACH HOLDING TANK SHALL HAVE A CSA APPROVAL STAMPED NEAR IAPMO APPROVAL.
- 5. SEAL ALL AROUND SHOWER WITH SILICON 78474-01-CHT.
- 6. SECURE VENT TUBES TO FLOOR.
- 7. LOCATE STRAP ON GALLEY CABINET FOR PROPER SLOPE.
- 8. SEE DWG 93128-02-000 FOR TANK INSTALLATION.
- 9. VENT PIPE MUST PROJECT 51MM MIN 64MM MAX ABOVE ROOF FOR PROPER FIT AND FUNCTION.
- 10. SEE DWG 61607-01-000 FOR INSTL OF GROMMET.

11. ALL EXTERIOR OPENINGS AROUND PIPE TO BE SEALED.

WINNEBAGO 93 W1CN34R0

DATE	REVISED TOLERANCES ARE:	MATERIAL:
CHR	SHOULDER DIA ± .5	
PIE	HEAT-TREAT ± .01	
PLC	HOLES ± .01	
W.C.	ANGLES	
FINISH	FINISH	
COMP	PROJECTOR	

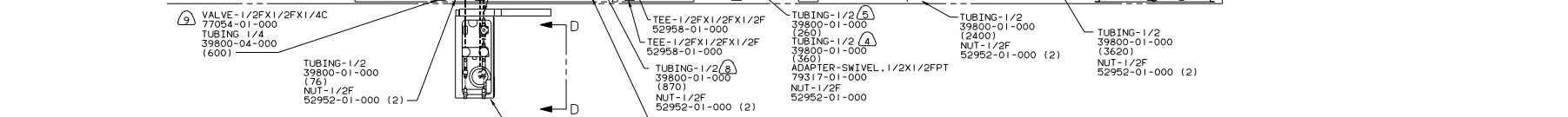
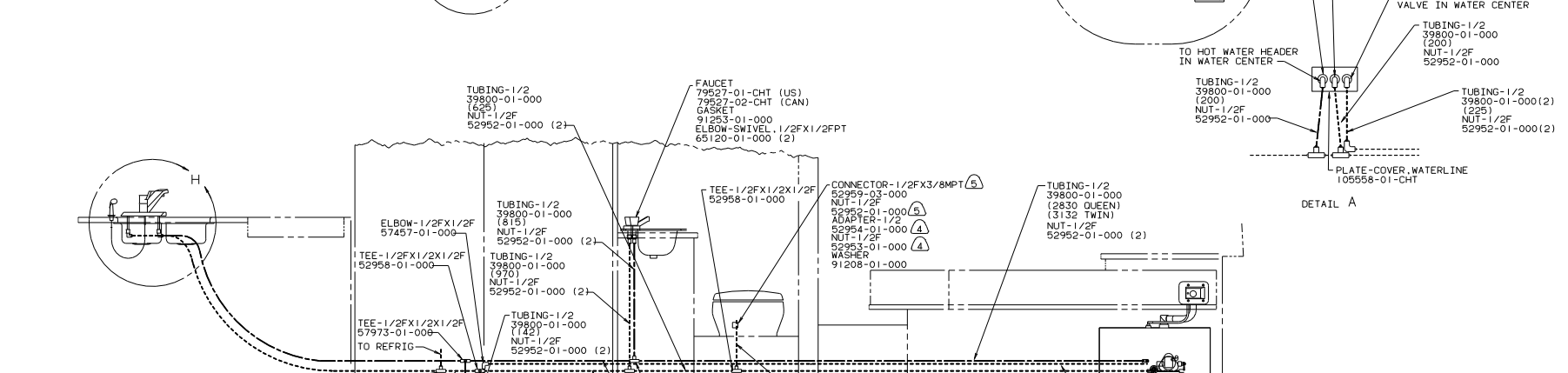
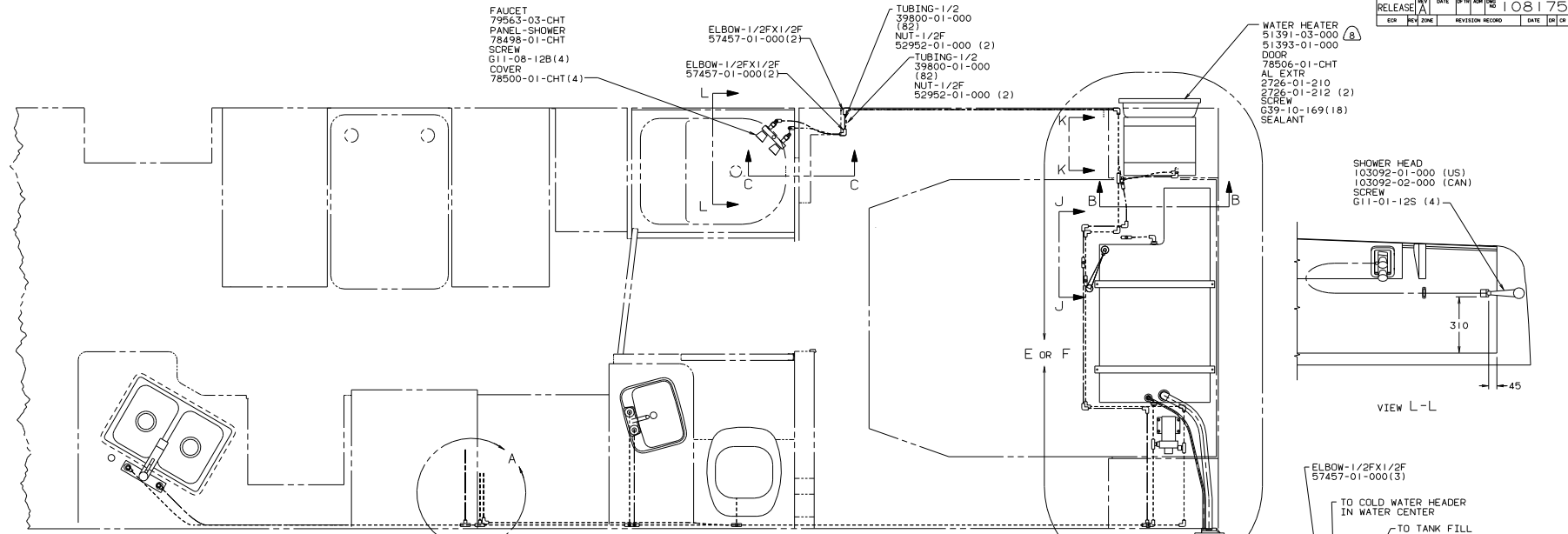
DRAINAGE SYSTEM INSTL

SCALE: NONE (DO NOT SCALE DIMENSIONS)

SHEET 1 OF 1

REF: 104994

108074



- 9 USE WITH ICEMAKER.
 - 8 USE WITHOUT ICEMAKER.
 - 7 USE WITH TOILET 85321-03-CHT.
 - 6 USE WITHOUT MOTOR AID.
 - 5 USE WITH AQUA MAGIC.
 - 4 USE WITH AQUA IV.
3. ALL TUBING TO BE SECURED AT 1200 INTERVALS MAXIMUM. WITH CLIP 91951-01-000 AND SCREW G13-06-16U.
 2. TUBING TO BE INSTALLED WITH SUFFICIENT SLOPE TO PROVIDE DRAINAGE TO NEAREST VALVE.
 1. PLASTIC FITTINGS TO BE SEALED WITH SEALANT 84456-01-000.

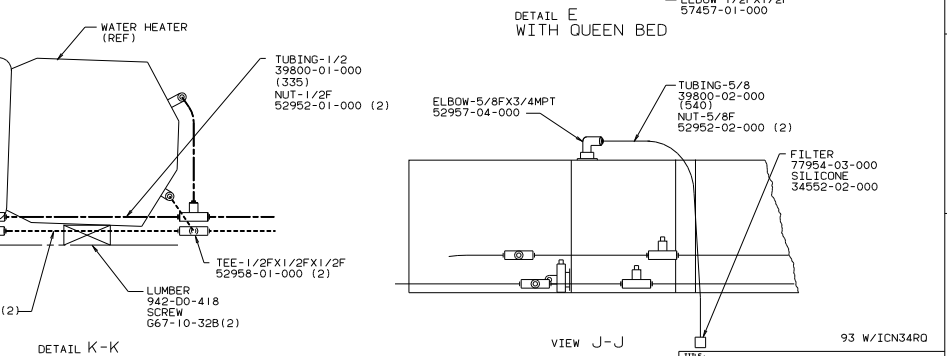
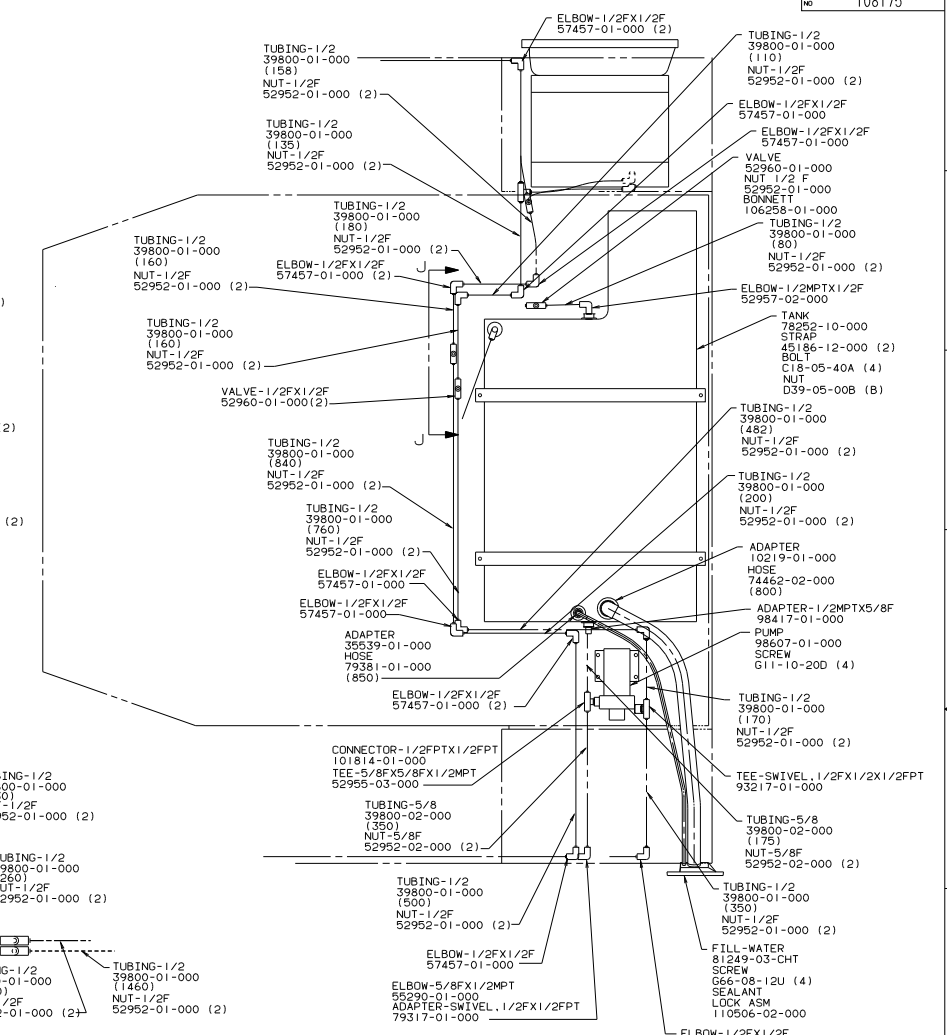
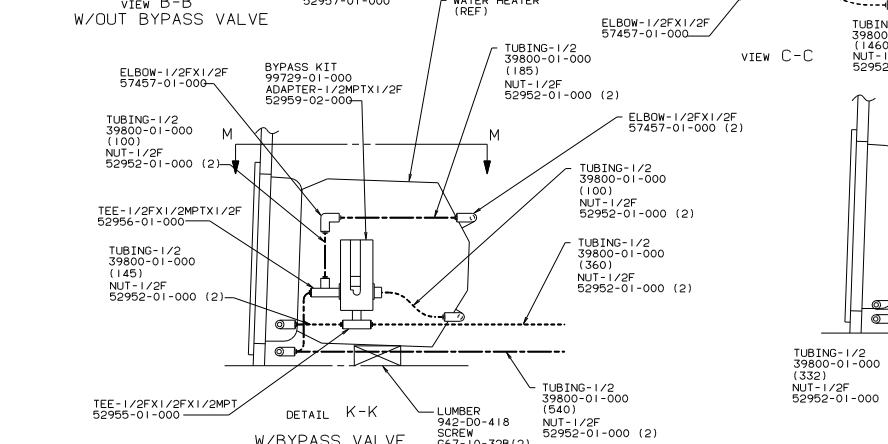
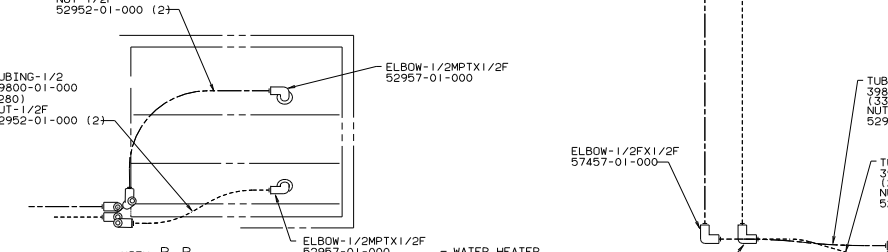
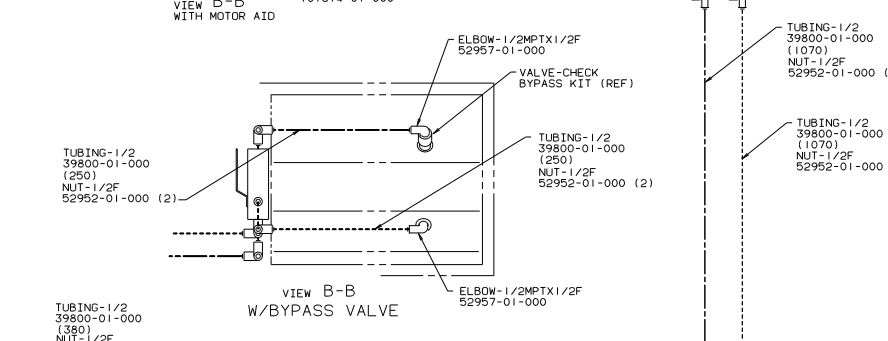
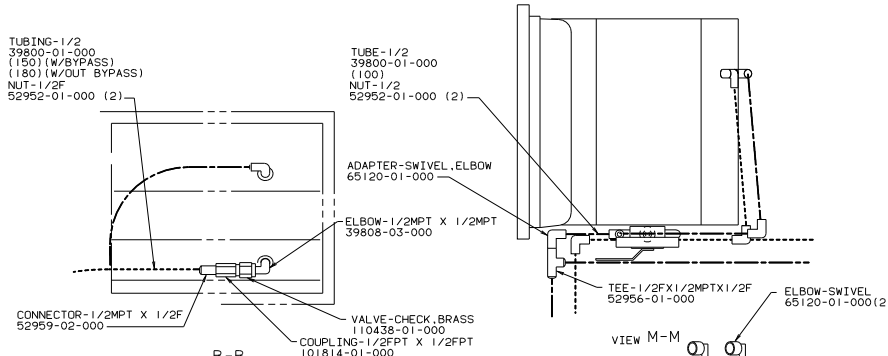
LEGEND	
HOT	-----
COLD	-----

WINNIEGAGO 93 W1CN34R0

QTR	UNSPECIFIED TOLERANCES ARE:	MATERIAL
CHRP	HALF DIM (H)	1:1
PL	ONE-PLACE (H, X1)	1:1
PL	TWO-PLACE (H, X1)	1:1
ANG	ANGLE	1:1
CON	THIRD ANGLE PROJECTION	

LANHT N34R02 TITLE: WATER SYSTEM INSTL
 DIA # SCALE: NONE DO NOT SCALE DRAWING SIZE: 11x17
 ALL DIMENSIONS ARE IN MILLIMETERS SHEET 1 OF 3

REF: 105225 108175



93 W1CN34R0

TITLE	NO. SHEETS	DRAWING	REV	DATE	BY	CHKD
WATER SYSTEM INSTL	2	1	1			

108175

