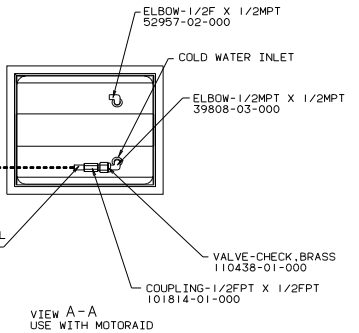
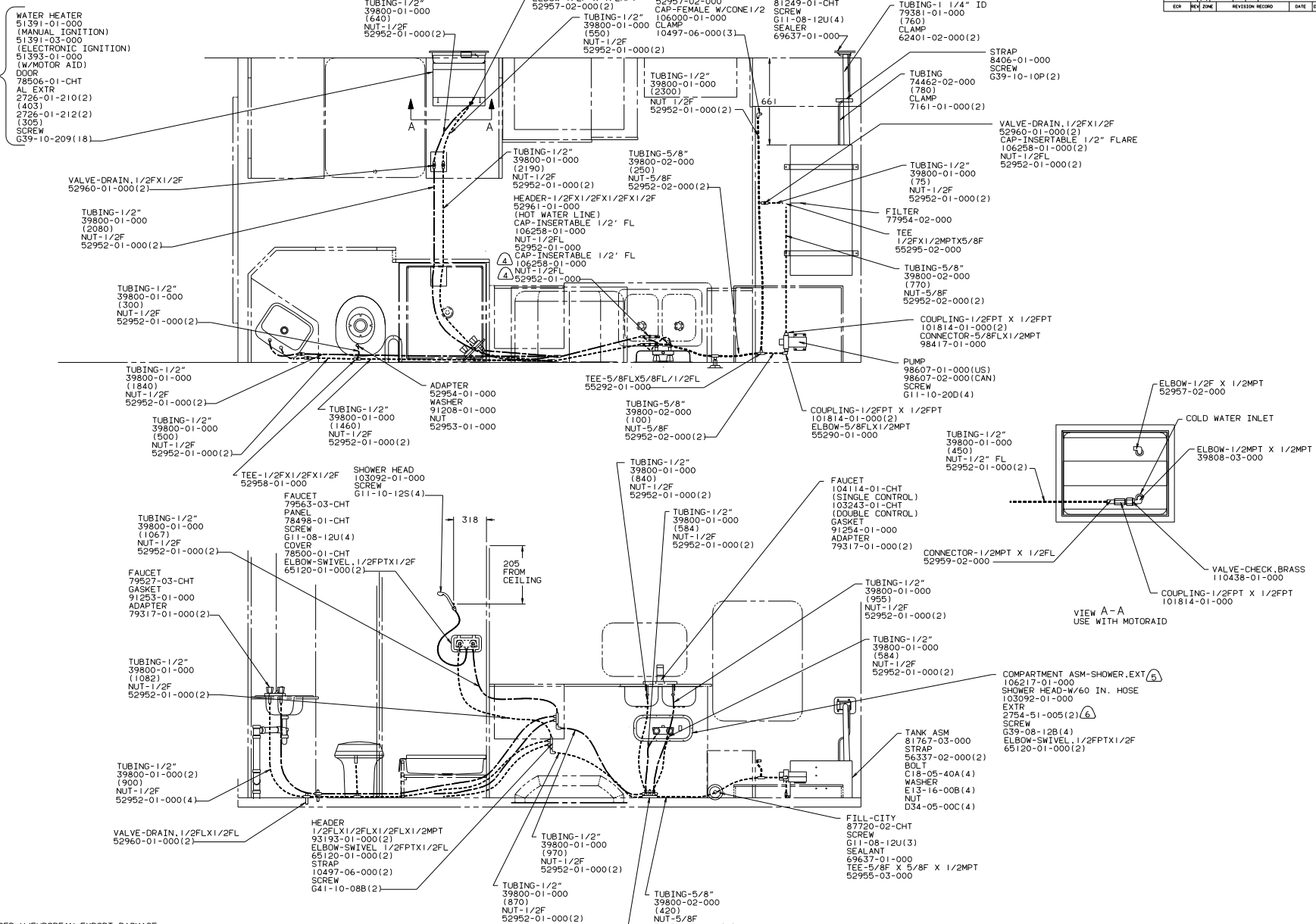


1. SLOPE OF HORIZONTAL PIPING TO BE 6 PER 305.
 2. SLOPE OF TRAP ARM MUST BE 6 PER 305.
 3. ALL PIPE AND FITTINGS TO BE ASSEMBLED WITH SOLVENT 4020-01-000.
 4. ALL EXTERIOR OPENINGS AROUND PIPE TO BE SEALED WITH 69637-01-000.
- 12 USE WITH RECTANGULAR SINK.
11 USE WITH OVAL SINK.

WINNAPCO 92 W/1F422RG2	
DATE	UNSPECIFIED TOLERANCES ARE MATERIAL.
DRW	SCALE: 1" = 1'-0"
REV	ONE-PLACE (1/2")
REV	TWO-PLACE (1/2")
REV	THREE-PLACE (1/2")
REV	FOUR-PLACE (1/2")
REV	FIVE-PLACE (1/2")
REV	SIX-PLACE (1/2")
REV	SEVEN-PLACE (1/2")
REV	EIGHT-PLACE (1/2")
REV	NINE-PLACE (1/2")
REV	TEN-PLACE (1/2")
REV	ELEVEN-PLACE (1/2")
REV	TWELVE-PLACE (1/2")
REV	THIRTEEN-PLACE (1/2")
REV	FOURTEEN-PLACE (1/2")
REV	FIFTEEN-PLACE (1/2")
REV	SIXTEEN-PLACE (1/2")
REV	SEVENTEEN-PLACE (1/2")
REV	EIGHTEEN-PLACE (1/2")
REV	NINETEEN-PLACE (1/2")
REV	TWENTY-PLACE (1/2")
REV	TWENTY-ONE-PLACE (1/2")
REV	TWENTY-TWO-PLACE (1/2")
REV	TWENTY-THREE-PLACE (1/2")
REV	TWENTY-FOUR-PLACE (1/2")
REV	TWENTY-FIVE-PLACE (1/2")
REV	TWENTY-SIX-PLACE (1/2")
REV	TWENTY-SEVEN-PLACE (1/2")
REV	TWENTY-EIGHT-PLACE (1/2")
REV	TWENTY-NINE-PLACE (1/2")
REV	THIRTY-PLACE (1/2")
REV	THIRTY-ONE-PLACE (1/2")
REV	THIRTY-TWO-PLACE (1/2")
REV	THIRTY-THREE-PLACE (1/2")
REV	THIRTY-FOUR-PLACE (1/2")
REV	THIRTY-FIVE-PLACE (1/2")
REV	THIRTY-SIX-PLACE (1/2")
REV	THIRTY-SEVEN-PLACE (1/2")
REV	THIRTY-EIGHT-PLACE (1/2")
REV	THIRTY-NINE-PLACE (1/2")
REV	FORTY-PLACE (1/2")
REV	FORTY-ONE-PLACE (1/2")
REV	FORTY-TWO-PLACE (1/2")
REV	FORTY-THREE-PLACE (1/2")
REV	FORTY-FOUR-PLACE (1/2")
REV	FORTY-FIVE-PLACE (1/2")
REV	FORTY-SIX-PLACE (1/2")
REV	FORTY-SEVEN-PLACE (1/2")
REV	FORTY-EIGHT-PLACE (1/2")
REV	FORTY-NINE-PLACE (1/2")
REV	FIFTY-PLACE (1/2")
REV	FIFTY-ONE-PLACE (1/2")
REV	FIFTY-TWO-PLACE (1/2")
REV	FIFTY-THREE-PLACE (1/2")
REV	FIFTY-FOUR-PLACE (1/2")
REV	FIFTY-FIVE-PLACE (1/2")
REV	FIFTY-SIX-PLACE (1/2")
REV	FIFTY-SEVEN-PLACE (1/2")
REV	FIFTY-EIGHT-PLACE (1/2")
REV	FIFTY-NINE-PLACE (1/2")
REV	SIXTY-PLACE (1/2")
REV	SIXTY-ONE-PLACE (1/2")
REV	SIXTY-TWO-PLACE (1/2")
REV	SIXTY-THREE-PLACE (1/2")
REV	SIXTY-FOUR-PLACE (1/2")
REV	SIXTY-FIVE-PLACE (1/2")
REV	SIXTY-SIX-PLACE (1/2")
REV	SIXTY-SEVEN-PLACE (1/2")
REV	SIXTY-EIGHT-PLACE (1/2")
REV	SIXTY-NINE-PLACE (1/2")
REV	SEVENTY-PLACE (1/2")
REV	SEVENTY-ONE-PLACE (1/2")
REV	SEVENTY-TWO-PLACE (1/2")
REV	SEVENTY-THREE-PLACE (1/2")
REV	SEVENTY-FOUR-PLACE (1/2")
REV	SEVENTY-FIVE-PLACE (1/2")
REV	SEVENTY-SIX-PLACE (1/2")
REV	SEVENTY-SEVEN-PLACE (1/2")
REV	SEVENTY-EIGHT-PLACE (1/2")
REV	SEVENTY-NINE-PLACE (1/2")
REV	EIGHTY-PLACE (1/2")
REV	EIGHTY-ONE-PLACE (1/2")
REV	EIGHTY-TWO-PLACE (1/2")
REV	EIGHTY-THREE-PLACE (1/2")
REV	EIGHTY-FOUR-PLACE (1/2")
REV	EIGHTY-FIVE-PLACE (1/2")
REV	EIGHTY-SIX-PLACE (1/2")
REV	EIGHTY-SEVEN-PLACE (1/2")
REV	EIGHTY-EIGHT-PLACE (1/2")
REV	EIGHTY-NINE-PLACE (1/2")
REV	NINETY-PLACE (1/2")
REV	NINETY-ONE-PLACE (1/2")
REV	NINETY-TWO-PLACE (1/2")
REV	NINETY-THREE-PLACE (1/2")
REV	NINETY-FOUR-PLACE (1/2")
REV	NINETY-FIVE-PLACE (1/2")
REV	NINETY-SIX-PLACE (1/2")
REV	NINETY-SEVEN-PLACE (1/2")
REV	NINETY-EIGHT-PLACE (1/2")
REV	NINETY-NINE-PLACE (1/2")
REV	HUNDRED-PLACE (1/2")



- (7) NOT USED W/EUROPEAN EXPORT PACKAGE. ADD CONNECTOR LINE BETWEEN ELBOWS.
- (6) USE STAPLE 8408-01-000 TO ATTACH TO SIDEWALL.
- (5) CAP SEAL; SEE SEALANT MANUAL.
- (4) USE WITHOUT EXTERIOR SHOWER.

3. ALL TUBING TO BE SECURED AT 1219 MAXIMUM SPACING WITH CLAMP 10495-01-000 AND SCREW G67-10-12B.

2. PLASTIC FITTINGS TO BE SEALED WITH SEALANT 84456-01-000.

1. TUBING TO BE INSTALLED WITH SUFFICIENT SLOPE TO PROVIDE DRAINAGE TO NEAREST VALVE.

- (4) NUT-1/2\"/>

LEGEND	
HOT LINE	-----
COLD LINE	-----

		92 W/1C422R62																																		
<table border="1"> <tr> <th>DATE</th> <th>BY</th> <th>CHKD</th> <th>APP'D</th> </tr> <tr> <td> </td> <td> </td> <td> </td> <td> </td> </tr> </table>	DATE	BY	CHKD	APP'D					<table border="1"> <tr> <th>UNSPECIFIED TOLERANCES ARE:</th> <th>MATERIAL:</th> </tr> <tr> <td>WELD DIM (IN)</td> <td> </td> </tr> <tr> <td>ONE-PLATE (IN)</td> <td> </td> </tr> <tr> <td>TWO-PLATE (IN)</td> <td> </td> </tr> <tr> <td>R/E</td> <td> </td> </tr> <tr> <td>ANGLE</td> <td> </td> </tr> <tr> <td> </td> <td> </td> </tr> <tr> <td> </td> <td> </td> </tr> <tr> <td> </td> <td> </td> </tr> </table>	UNSPECIFIED TOLERANCES ARE:	MATERIAL:	WELD DIM (IN)		ONE-PLATE (IN)		TWO-PLATE (IN)		R/E		ANGLE								<table border="1"> <tr> <th>DATE</th> <th>BY</th> <th>CHKD</th> <th>APP'D</th> </tr> <tr> <td> </td> <td> </td> <td> </td> <td> </td> </tr> </table>	DATE	BY	CHKD	APP'D				
DATE	BY	CHKD	APP'D																																	
UNSPECIFIED TOLERANCES ARE:	MATERIAL:																																			
WELD DIM (IN)																																				
ONE-PLATE (IN)																																				
TWO-PLATE (IN)																																				
R/E																																				
ANGLE																																				
DATE	BY	CHKD	APP'D																																	
<table border="1"> <tr> <th>DATE</th> <th>BY</th> <th>CHKD</th> <th>APP'D</th> </tr> <tr> <td> </td> <td> </td> <td> </td> <td> </td> </tr> </table>	DATE	BY	CHKD	APP'D					<table border="1"> <tr> <th>DATE</th> <th>BY</th> <th>CHKD</th> <th>APP'D</th> </tr> <tr> <td> </td> <td> </td> <td> </td> <td> </td> </tr> </table>	DATE	BY	CHKD	APP'D					<table border="1"> <tr> <th>DATE</th> <th>BY</th> <th>CHKD</th> <th>APP'D</th> </tr> <tr> <td> </td> <td> </td> <td> </td> <td> </td> </tr> </table>	DATE	BY	CHKD	APP'D														
DATE	BY	CHKD	APP'D																																	
DATE	BY	CHKD	APP'D																																	
DATE	BY	CHKD	APP'D																																	
DRAWING NO: 422R62 TITLE: WATER SYSTEM INSTL WINGS DIA # SCALE: 0:1 DO NOT SCALE DRAWING SIZE: 11x17 ALL DIMENSIONS ARE IN MILLIMETERS SHEET 1 OF 1		105313 REF: 96804																																		