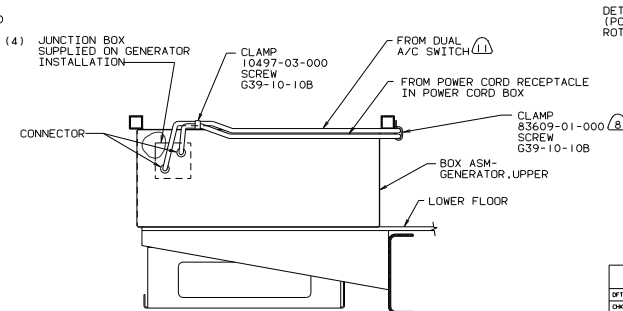
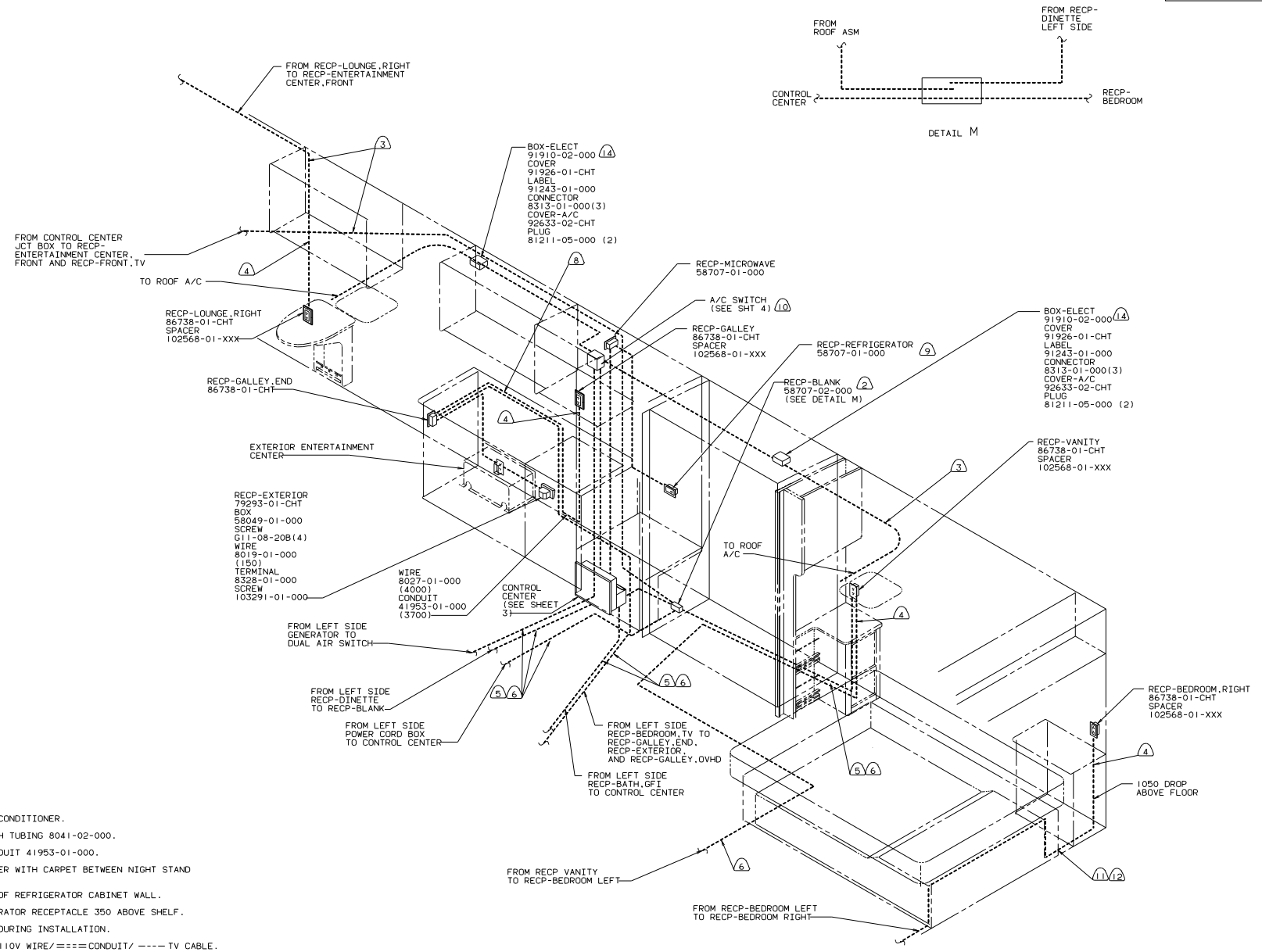


- 15. PAINT EXPOSED SURFACES BLACK WITH 106112-01-000.
- 14. COVER GROUND WIRE WITH TUBING 8041-02-000.
- 13. ROUTE ABOVE FLOOR, COVER WITH CARPET BETWEEN NIGHT STAND AND BED CABINET.
- 12. USE WITH GENERATOR PREP.
- 11. USE WITH 6.5KW GENERATOR.
- 10. PROTECT WIRES WITH CONDUIT 41953-01-000 IN THIS AREA.
- 9. WIRE ROUTED BELOW FLOOR. CLAMP TO FLOOR AS NECESSARY WITH CLAMP 10497-01-000.
- 8. CLAMPS ARE TO BE LOCATED ABOVE STORAGE AREAS, EVERY 500.
- 7. WIRE IN SIDEWALL.
- 6. WIRE IN ROOF.
- 5. USE WITHOUT ROOF AIR CONDITIONER.
- 4. ADD 13 DIA DRAIN HOLE CENTER NEAR SIDE AWAY FROM SIDEWALL.
- 3. --- 12V WIRE/- - - 110V WIRE/===== CONDUIT/---- TV CABLE.
- 2. ALL WIRES ARE TO BE CLAMPED WITH CLAMP 10497-05-000 WITHIN 200 OF OUTLET BOXES AND SPLICES, USE SCREW G67-10-12B, UNLESS OTHERWISE NOTED.
- 1. ALL WIRE TO BE CLAMPED WITH CLAMP 10495-01-000 OR CLIP 80734-01-000 EVERY 700, USE SCREW G67-10-12B UNLESS OTHERWISE SPECIFIED.



VIEW G-G

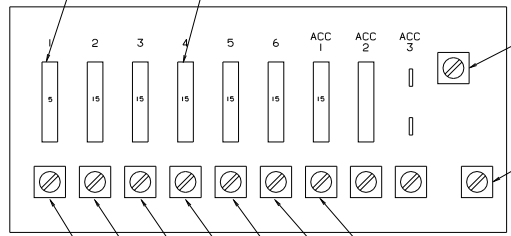
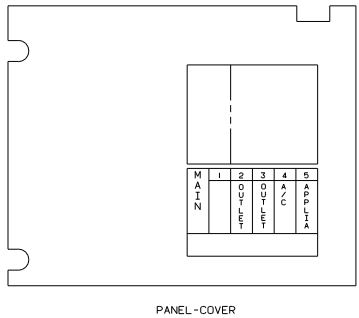
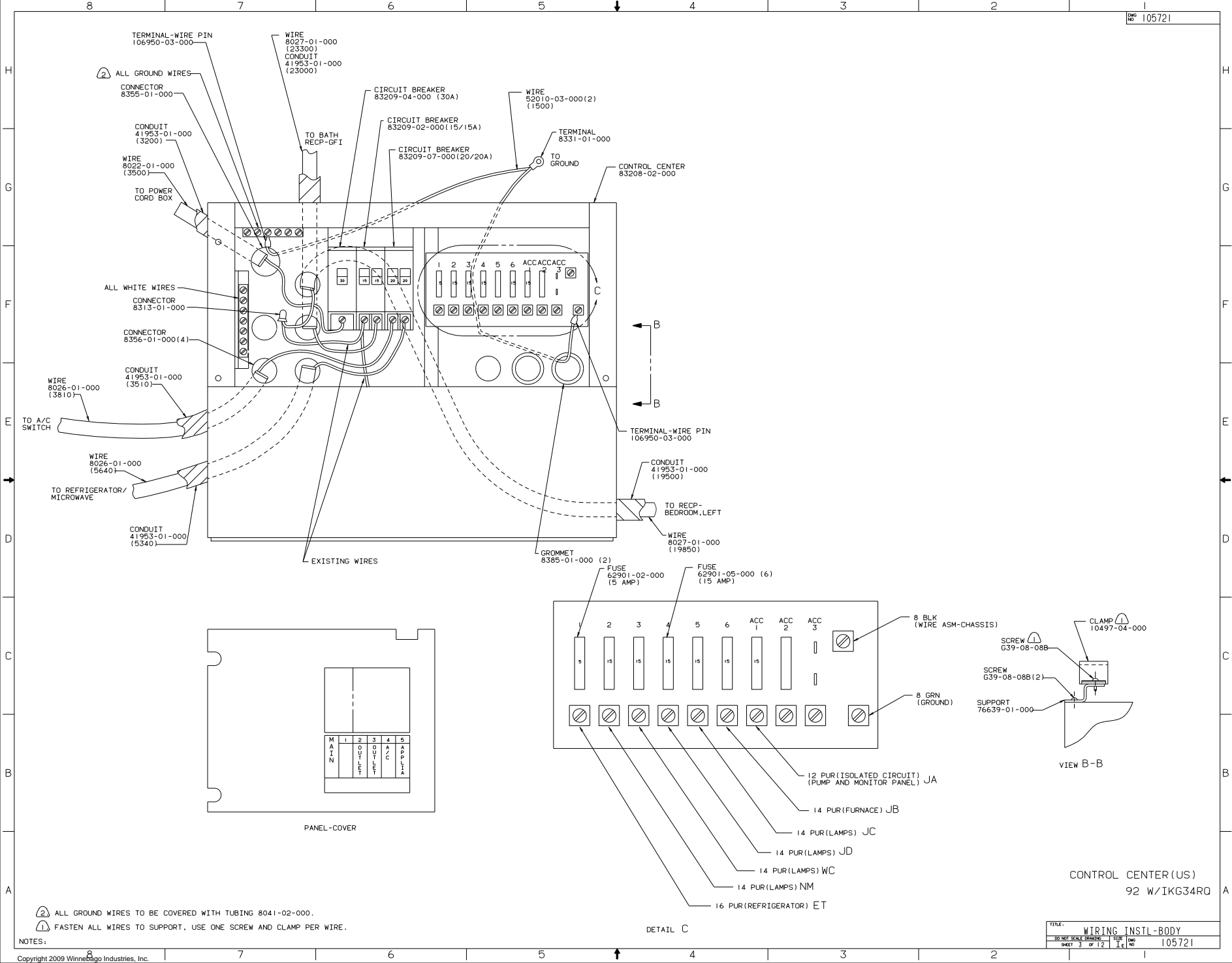
110V LEFT (US)



- (14) USE WITHOUT ROOF AIR CONDITIONER.
- 13. COVER GROUND WIRE WITH TUBING 8041-02-000.
- (12) PROTECT WIRE WITH CONDUIT 41953-01-000.
- (11) ROUTE ABOVE FLOOR. COVER WITH CARPET BETWEEN NIGHT STAND AND BED CABINET.
- (10) ROUTE WIRES OVER TOP OF REFRIGERATOR CABINET WALL.
- (9) LOCATE TOP OF REFRIGERATOR RECEPTACLE 350 ABOVE SHELF.
- (8) ROUTE ALONG SIDEWALL DURING INSTALLATION.
- 7. --- 12V WIRE / - - - 110V WIRE / === CONDUIT / - - - TV CABLE.
- (6) WIRE ROUTED BELOW FLOOR. CLAMP TO FLOOR FRAME AS NECESSARY WITH CLAMP 10497-01-000 AND SCREW G39-10-12B.
- (5) ROUTE WIRES BEFORE SETTING UPPER FLOOR ASM.
- (4) ROUTE WIRE IN SIDEWALL DURING INSTALLATION.
- (3) WIRE IN ROOF.
- (2) ALL WIRES ARE TO BE CLAMPED WITH CLAMP 10497-05-000 WITHIN 200 OF OUTLET BOXES AND SPLICES. USE SCREW G67-10-12B.
- 1. ALL WIRE TO BE CLAMPED WITH CLAMP 10495-01-000 OR CLIP 80734-01-000 EVERY 700. USE SCREW G67-10-12B UNLESS OTHERWISE SPECIFIED.

110V RIGHT(US)  
92 W/IKG34RO

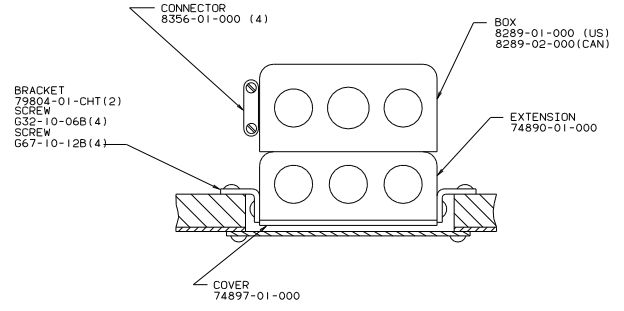
TITLE		WIRING INSTL-BODY	
30	NET SCALE DRAWING	1	1
SHEET	2	OF 12	1
		1	105721



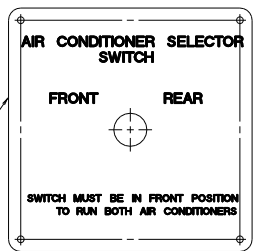
② ALL GROUND WIRES TO BE COVERED WITH TUBING 8041-02-000.

① FASTEN ALL WIRES TO SUPPORT. USE ONE SCREW AND CLAMP PER WIRE.

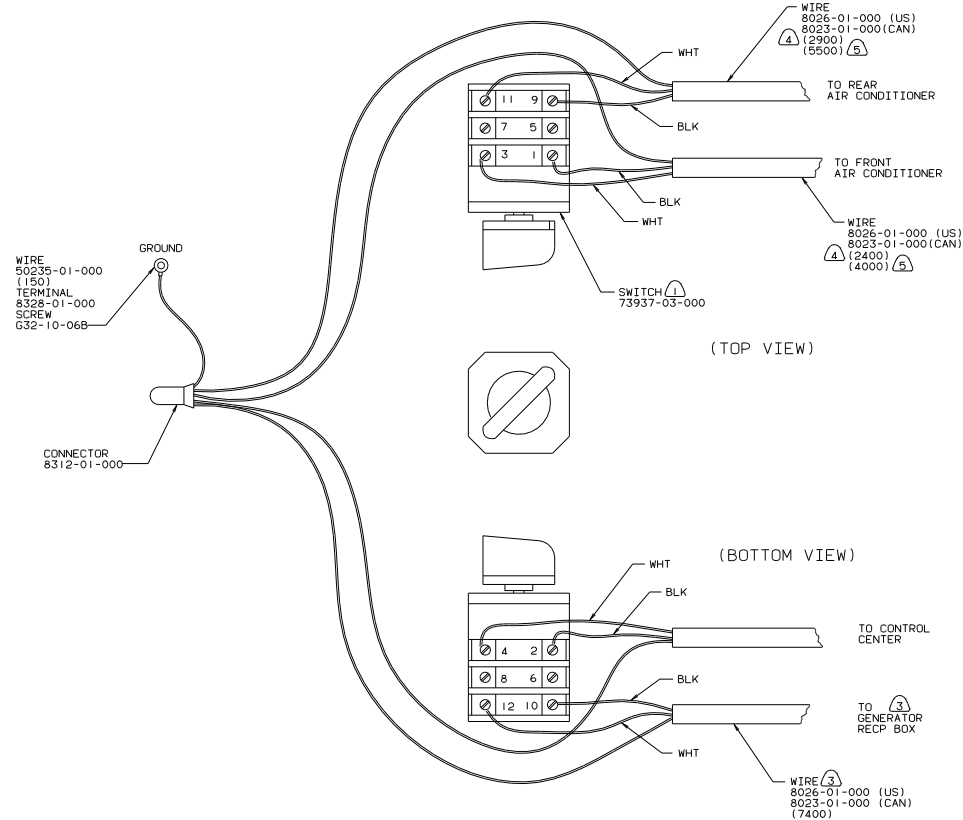
TITLE		WIRING INSTL-BODY	
30 NET SCALE DRAWING	1/16	1/16	1/16
SHEET 3	OF 12	FIG NO	105721



TOP VIEW OF BOX



COVER-A/C SWITCH 88238-01-000 (3) 88238-02-000 SCREW G11-08-12D (4)



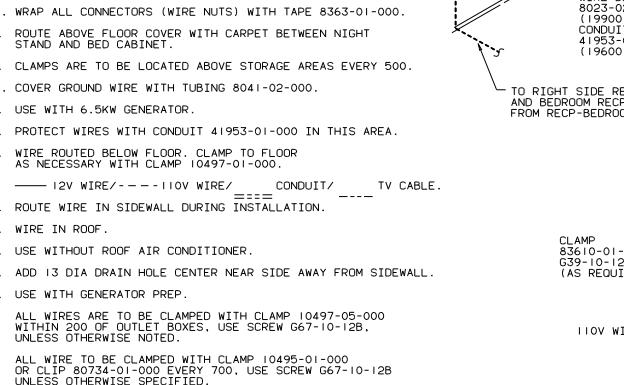
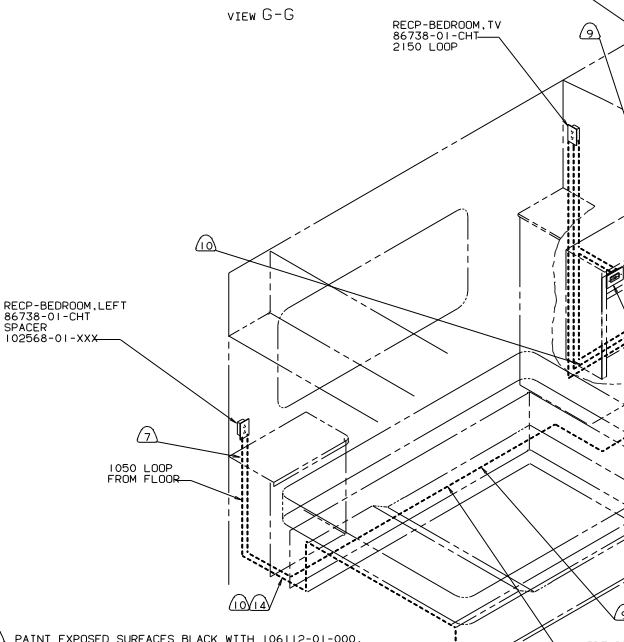
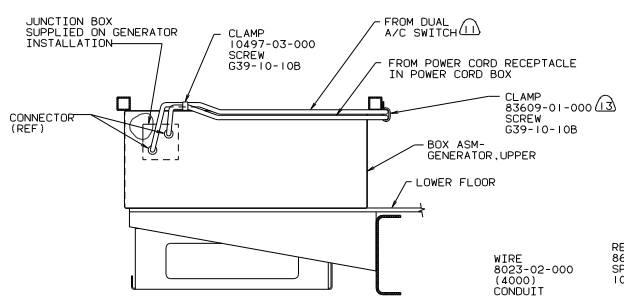
(TOP VIEW)

(BOTTOM VIEW)

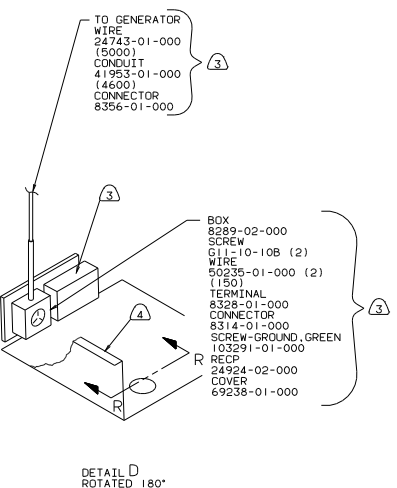
- ⑤ USE WITH ROOF AIR CONDITIONER.
- ④ USE WITHOUT ROOF AIR CONDITIONER.
- ③ USE WITH 6500 WATT GENERATOR OR LARGER.
- 2. ALL GROUND WIRES TO BE COVERED WITH TUBING 8041-02-000.
- ① FASTEN SWITCH TO COVER 74897-01-000 BEFORE FASTENING COVER TO BOX.

DUAL AIR SWITCH  
110V (US/CAN)  
92 W/IKG34RQ

TITLE: WIRING INSTL-BODY	
30 NET SCALE DRAWING	REV 1.0
SHEET 4 OF 12	105721

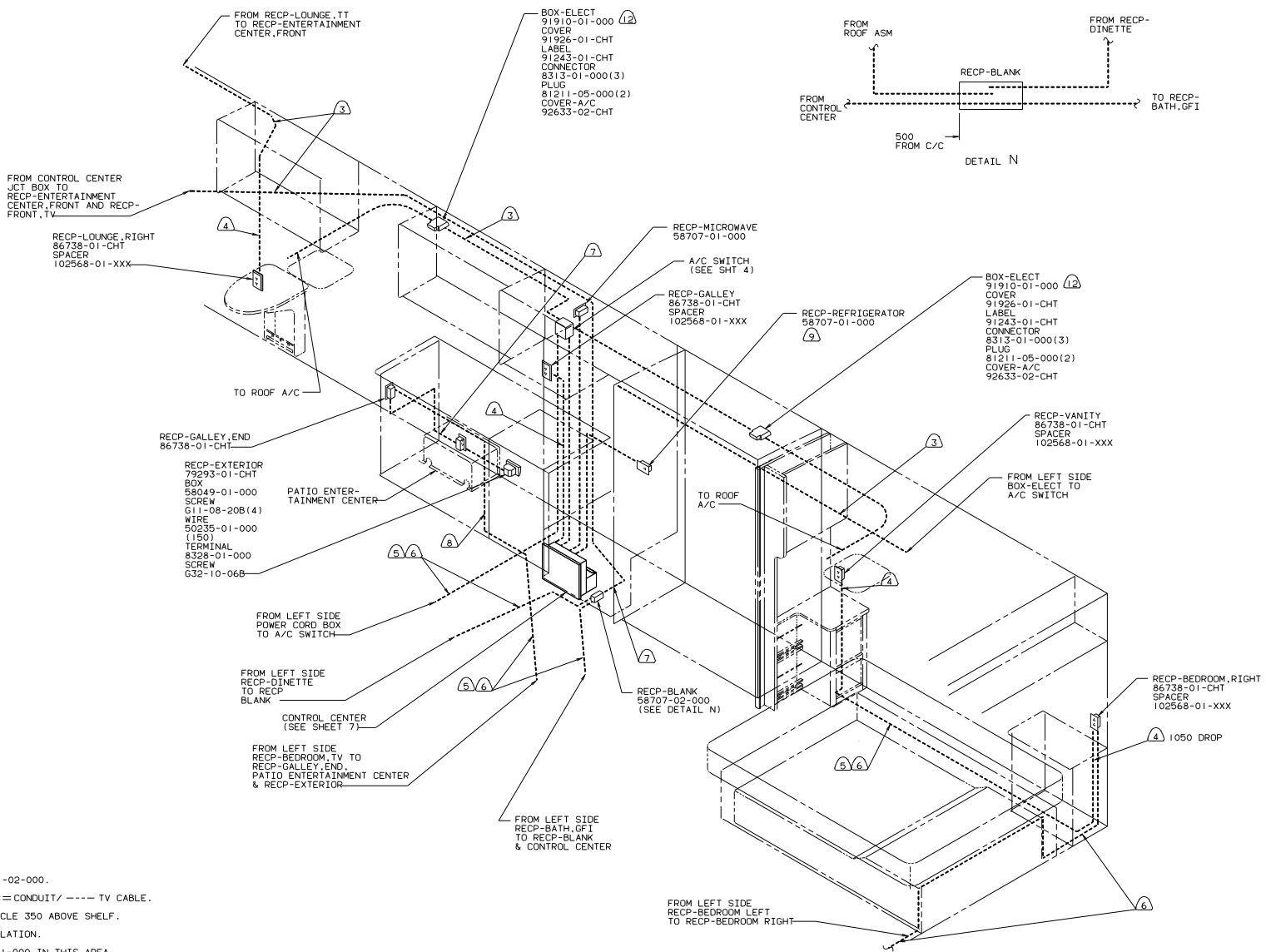


- 16. PAINT EXPOSED SURFACES BLACK WITH 106112-01-000.
  - 15. WRAP ALL CONNECTORS (WIRE NUTS) WITH TAPE 8363-01-000.
  - 14. ROUTE ABOVE FLOOR COVER WITH CARPET BETWEEN NIGHT STAND AND BED CABINET.
  - 13. CLAMPS ARE TO BE LOCATED ABOVE STORAGE AREAS EVERY 500.
  - 12. COVER GROUND WIRE WITH TUBING 8041-02-000.
  - 11. USE WITH 6.5KW GENERATOR.
  - 10. PROTECT WIRES WITH CONDUIT 41953-01-000 IN THIS AREA.
  - 9. WIRE ROUTED BELOW FLOOR. CLAMP TO FLOOR AS NECESSARY WITH CLAMP 10497-01-000.
  - 8. --- 12V WIRE / - - - 110V WIRE / CONDUIT / TV CABLE.
  - 7. ROUTE WIRE IN SIDEWALL DURING INSTALLATION.
  - 6. WIRE IN ROOF.
  - 5. USE WITHOUT ROOF AIR CONDITIONER.
  - 4. ADD 13 DIA DRAIN HOLE CENTER NEAR SIDE AWAY FROM SIDEWALL.
  - 3. USE WITH GENERATOR PREP.
2. ALL WIRES ARE TO BE CLAMPED WITH CLAMP 10497-05-000 WITHIN 200 OF OUTLET BOXES. USE SCREW G67-10-12B, UNLESS OTHERWISE NOTED.
1. ALL WIRE TO BE CLAMPED WITH CLAMP 10495-01-000 OR CLIP 80734-01-000 EVERY 700. USE SCREW G67-10-12B UNLESS OTHERWISE SPECIFIED.



110V LEFT (CAN)  
92 W/IKG34RO

TITLE: WIRING INSTL-BODY	
30 NET SCALE DRAWING	1 of 12
SHEET 5	1 of 12
105721	

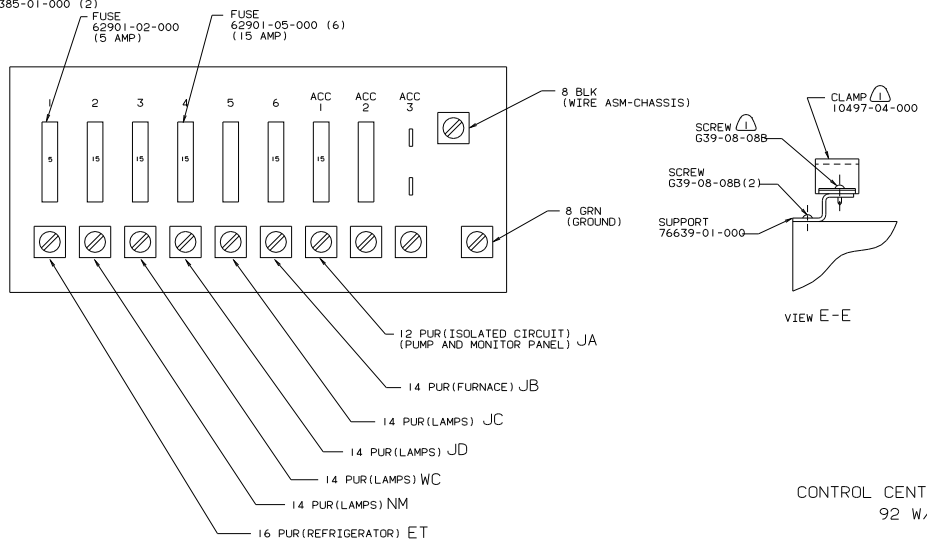
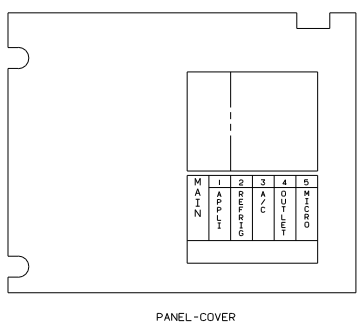
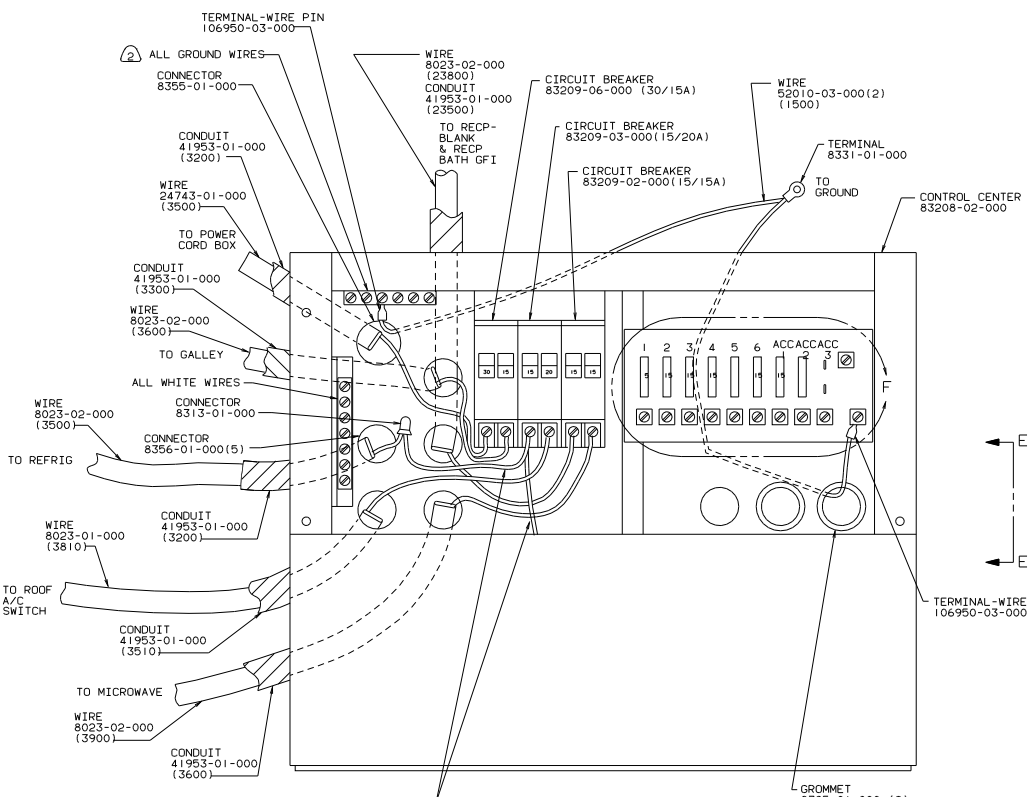


- (12) USE WITHOUT ROOF AIR CONDITIONER.
- 11. COVER GROUND WIRE WITH TUBING 8041-02-000.
- 10. — 12V WIRE / - - - 110V WIRE / = = = CONDUIT / - - - TV CABLE.
- (9) LOCATE TOP OF REFRIGERATOR RECEPTACLE 350 ABOVE SHELF.
- (8) ROUTE ALONG SIDEWALL DURING INSTALLATION.
- (7) PROTECT WIRES WITH CONDUIT 41953-01-000 IN THIS AREA.
- (6) WIRE ROUTED BELOW FLOOR. CLAMP TO FLOOR AS NECESSARY WITH CLAMP 10497-01-000 AND SCREW G67-10-12B.
- (5) ROUTE WIRES BEFORE SETTING UPPER FLOOR ASM.
- (4) ROUTE WIRE IN SIDEWALL DURING INSTALLATION.
- (3) WIRE IN ROOF.
- 2. ALL WIRES ARE TO BE CLAMPED WITH CLAMP 10497-05-000 WITHIN 200 OF OUTLET BOXES. USE SCREW G67-10-12B.
- 1. ALL WIRE TO BE CLAMPED WITH CLAMP 10495-01-000 OR CLIP 80734-01-000 EVERY 700. USE SCREW G67-10-12B UNLESS OTHERWISE SPECIFIED.

NOTES:

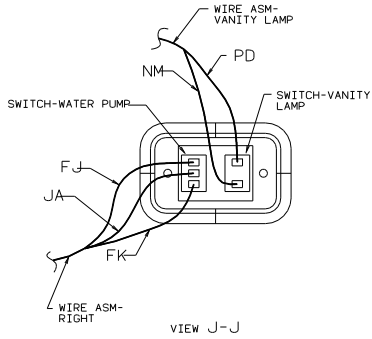
110V RIGHT(CAN)  
92 W/IKG34RO

TITLE: WIRING INSTL-BODY	
30 NET SCALE DRAWING	REV 1.0
SHEET 6 OF 12	105721

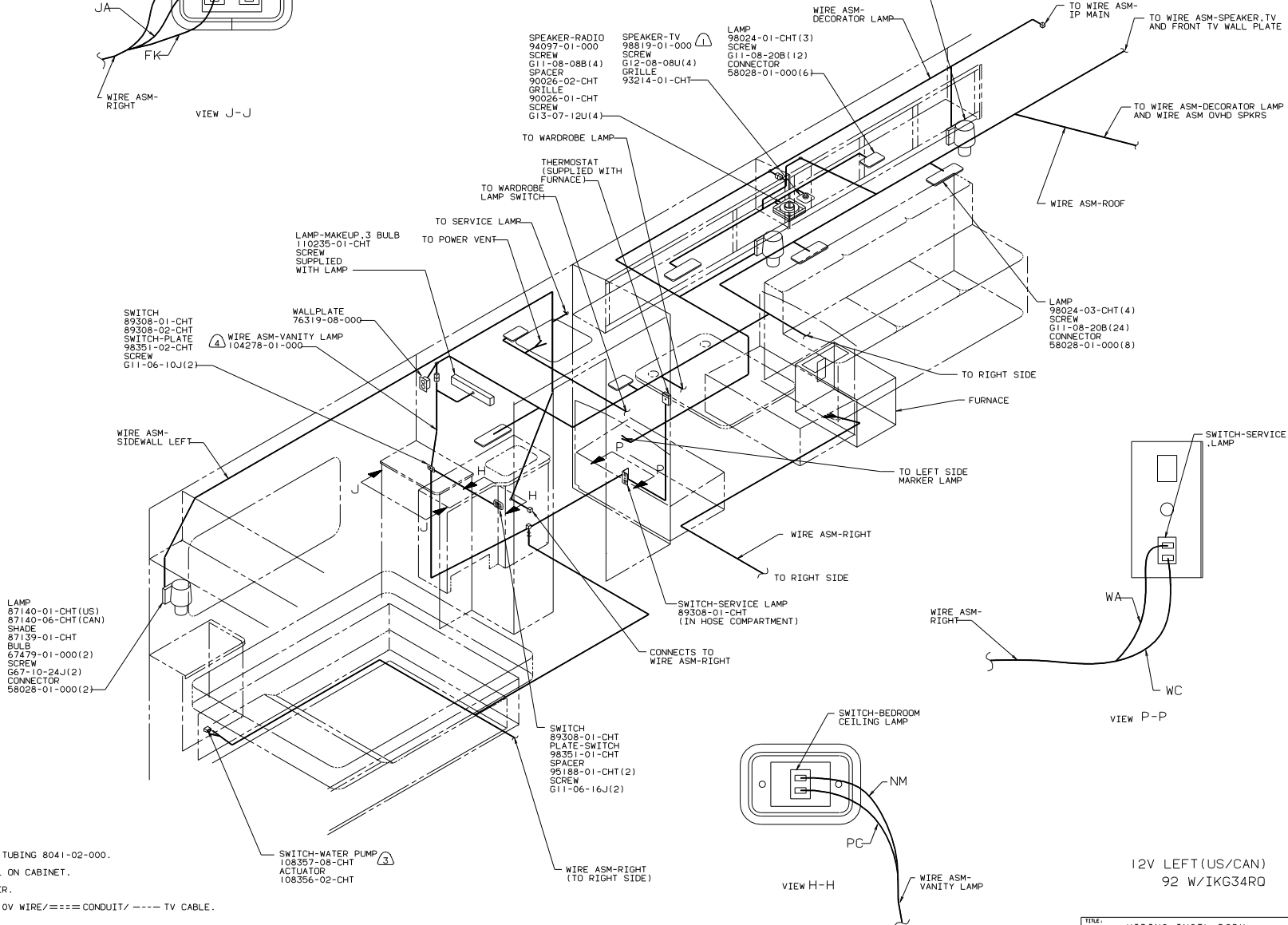


3. WRAP ALL CONNECTORS (WIRE NUTS) WITH TAPE 8363-01-000.
- ② ALL GROUND WIRES TO BE COVERED WITH TUBING 8041-02-000.
- ① FASTEN ALL WIRES TO SUPPORT. USE ONE SCREW AND CLAMP PER WIRE.

CONTROL CENTER (CAN)  
92 W/IKG34RQ



- LAMP 87140-01-CHT (US) (2)
- 87140-06-CHT (CAN) (2)
- SHADE 87139-01-CHT (2)
- BULB 67479-01-000 (4)
- SCREW 667-10-24J (4)
- CONNECTOR 58028-01-000 (4)

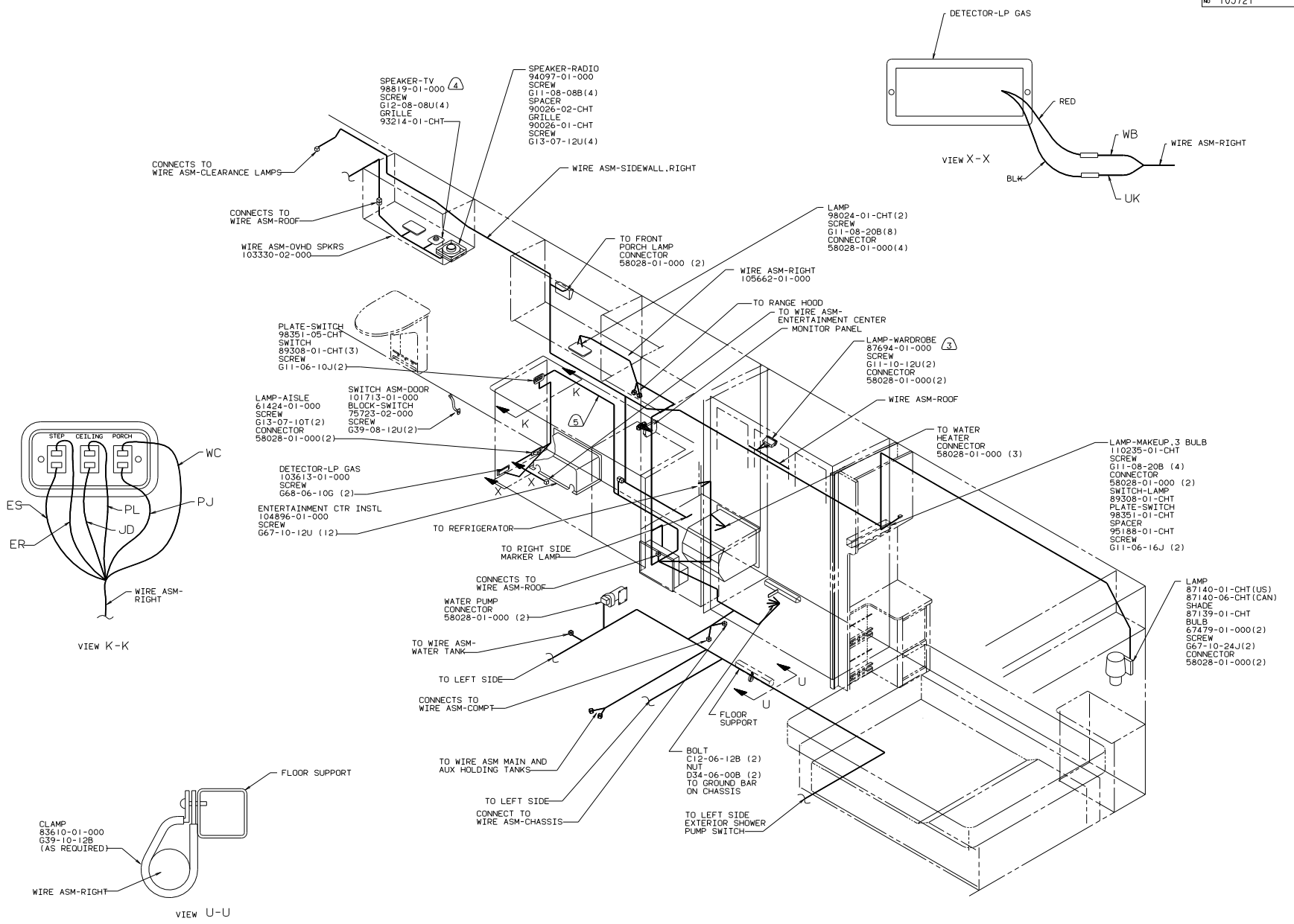


- 5. COVER GROUND WIRE WITH TUBING 8041-02-000.
- 4. INSTALL BEFORE LINEFILL ON CABINET.
- 3. USE WITH EXTERIOR SHOWER.
- 2. 12V WIRE / 110V WIRE / CONDUIT / TV CABLE.
- 1. USE WITH TELEVISION.

12V LEFT (US/CAN)  
92 W/IKG34R0

TITLE	WIRING INSTL-BODY	
30 NET SCALE DRAWING	REV	16
SHEET 8 OF 12	DATE	105721

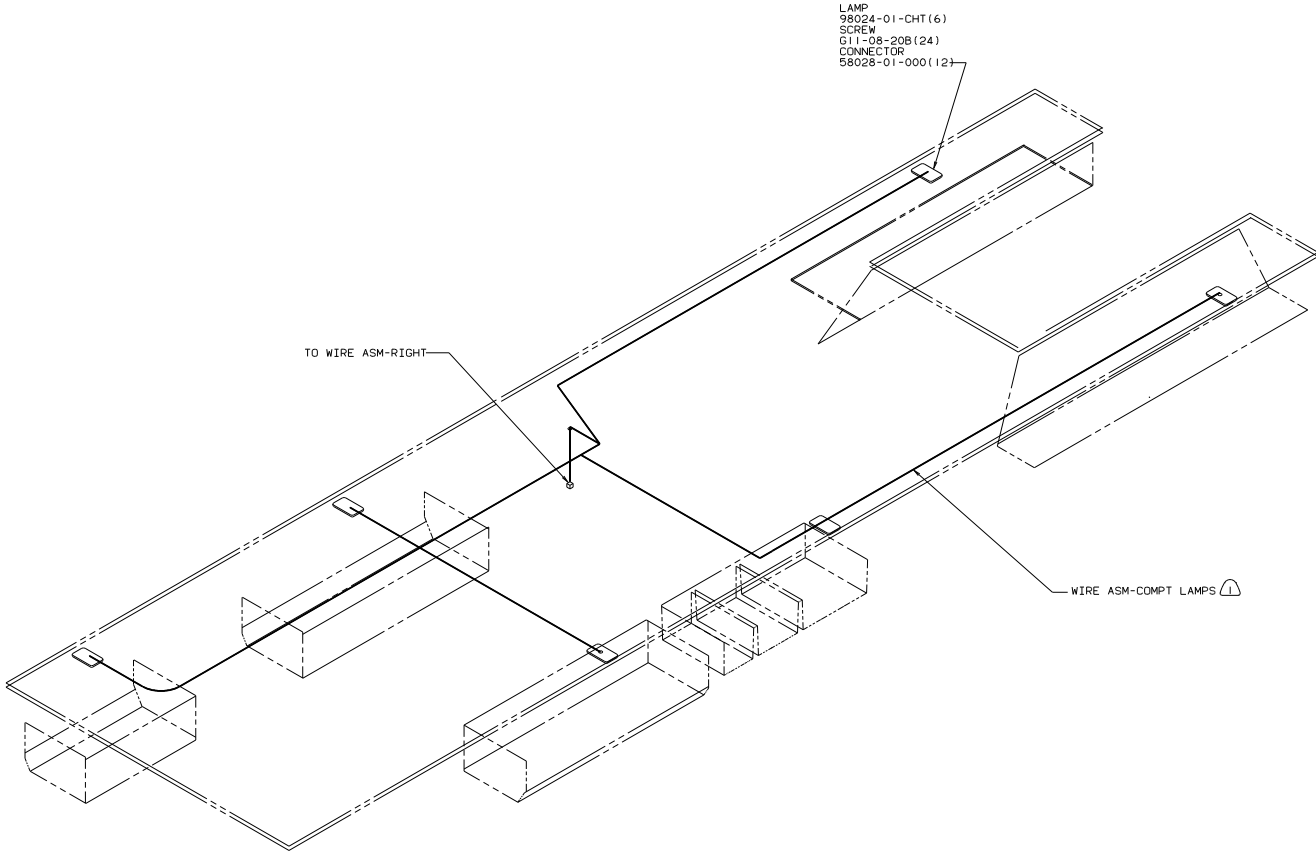




6. COVER GROUND WIRE WITH TUBING 8041-02-000.
- ③ FASTEN WIRES TO CABINET FRAME USING CLAMP 10497-01-000, SCREW G67-08-12B AS REQUIRED.
- ④ USE WITH TELEVISION.
- ③ LOCATE LAMP 100MM FROM HINGE SIDE OF DOOR.
2. — 12V WIRE / - - - 110V WIRE / ===== CONDUIT / - - - - TV CABLE.
- ① USE WITH GENERATOR.

12V RIGHT (US/CAN)  
92 W/IKG34RQ

TITLE:	WIRING INSTL-BODY
30 NET SCALE DRAWING	FILE
SHEET 9 OF 12	1 E
	105721




LAMP  
 98024-01-CHT (6)  
 SCREW  
 G11-08-20B (24)  
 CONNECTOR  
 58028-01-000 (12)

TO WIRE ASM-RIGHT

WIRE ASM-COMPT LAMPS 

3. ——— 12V WIRE / - - - - 110V WIRE / ===== CONDUIT / - - - - TV CABLE.

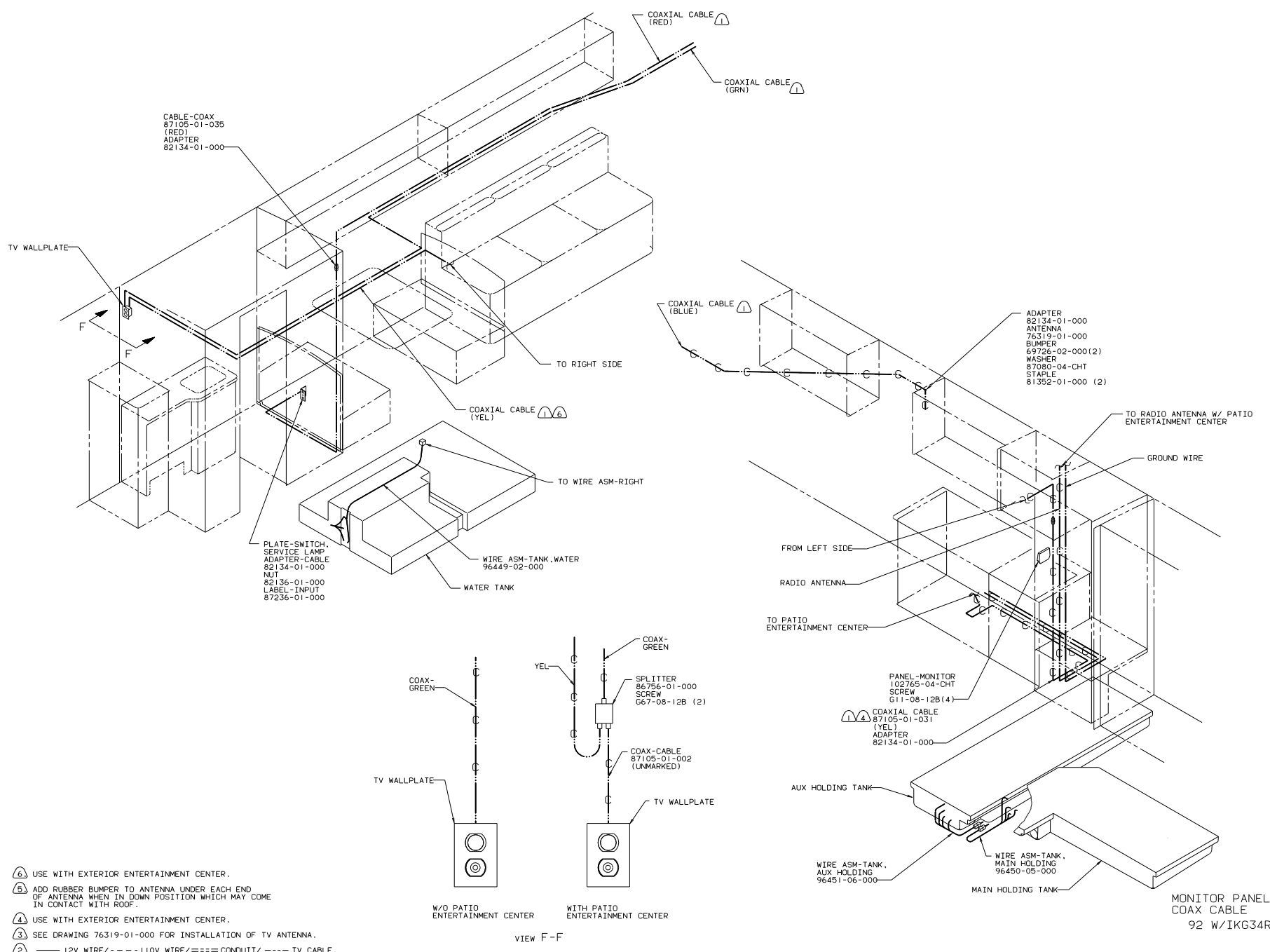
2. LAMPS TO BE MOUNTED WITH SWITCH OUTBOARD AND 75 +/- 20 FROM EDGE OF FLOOR.

 WIRE ASM ROUTED IN FLOOR.

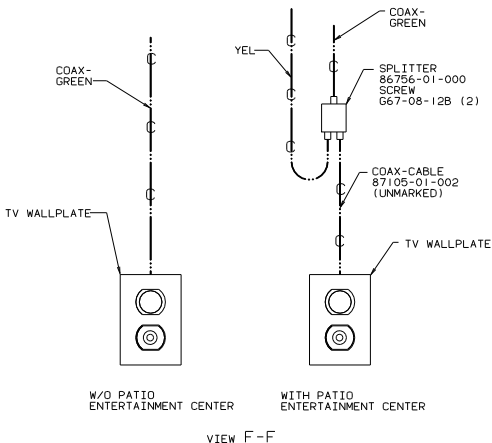
NOTES:

COMPARTMENT LAMPS  
 92 W/IKG34RQ

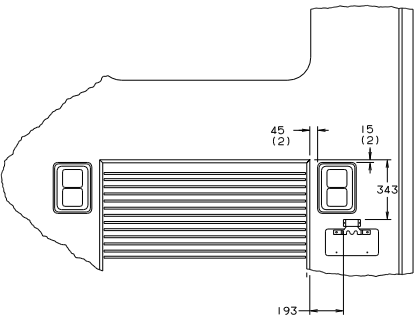
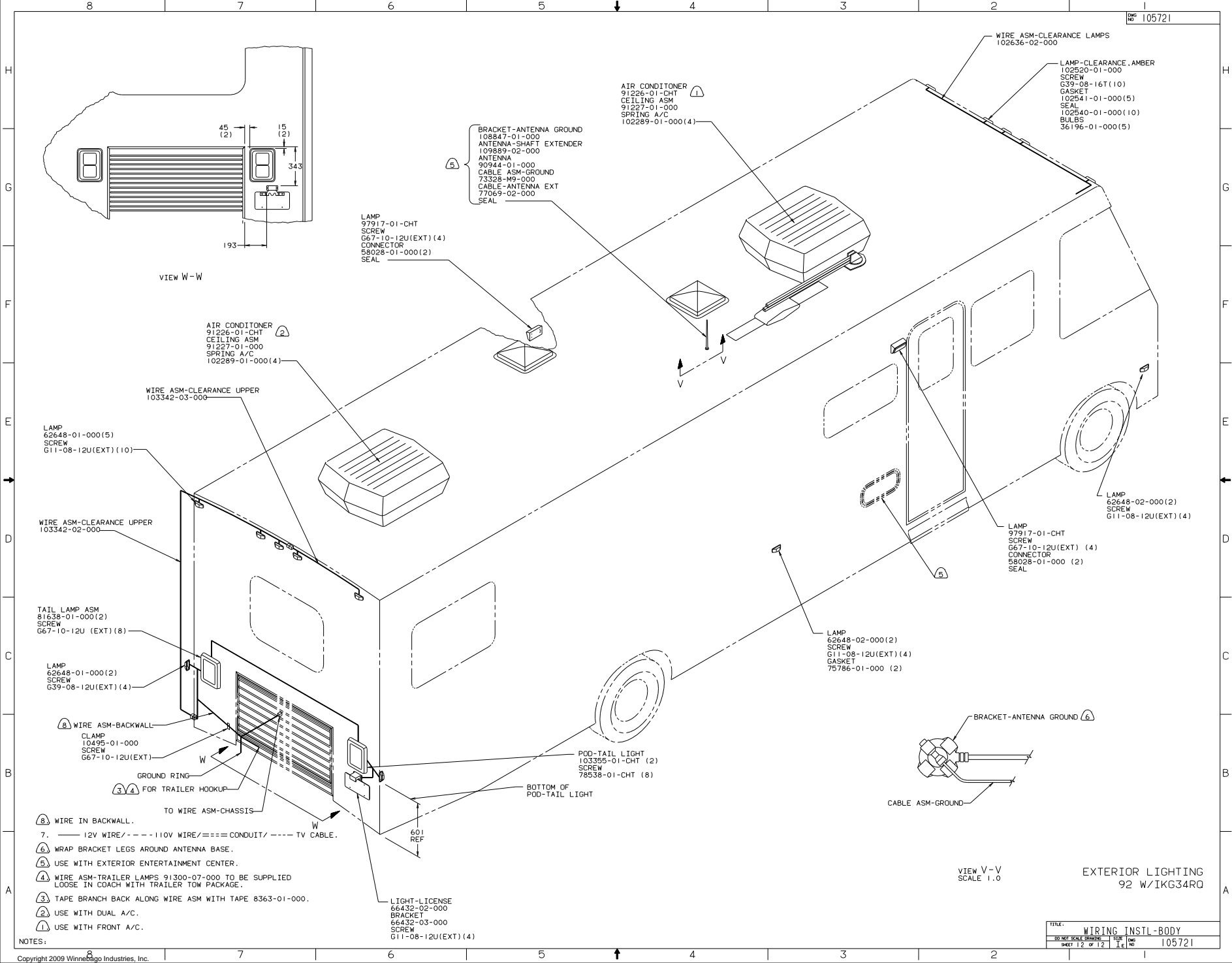
TITLE: WIRING INSTL-BODY	
30 NET SCALE DRAWING	1/16" = 1'-0"
SHEET 10 OF 12	105721



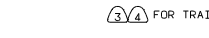
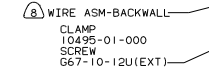
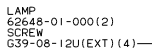
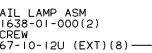
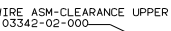
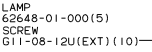
- NOTES:
- ④ USE WITH EXTERIOR ENTERTAINMENT CENTER.
  - ⑤ ADD RUBBER BUMPER TO ANTENNA UNDER EACH END OF ANTENNA WHEN IN DOWN POSITION WHICH MAY COME IN CONTACT WITH ROOF.
  - ④ USE WITH EXTERIOR ENTERTAINMENT CENTER.
  - ③ SEE DRAWING 76319-01-000 FOR INSTALLATION OF TV ANTENNA.
  - ② ——— 12V WIRE / - - - - 110V WIRE / ===== CONDUIT / - - - - TV CABLE.
  - ① WIRE IN ROOF



VIEW F-F



VIEW W-W



7. 12V WIRE / - - - 110V WIRE / = = = CONDUIT / - - - TV CABLE.

6. WRAP BRACKET LEGS AROUND ANTENNA BASE.

5. USE WITH EXTERIOR ENTERTAINMENT CENTER.

4. WIRE ASM-TRAILER LAMPS 91300-07-000 TO BE SUPPLIED LOOSE IN COACH WITH TRAILER TOW PACKAGE.

3. TAPE BRANCH BACK ALONG WIRE ASM WITH TAPE 8363-01-000.

2. USE WITH DUAL A/C.

1. USE WITH FRONT A/C.



NOTES: