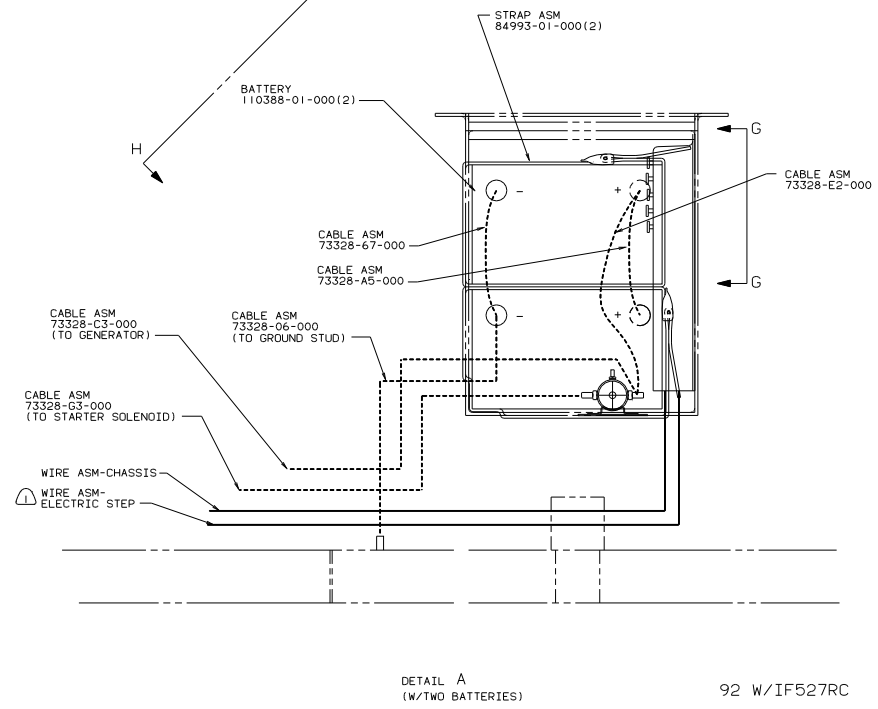
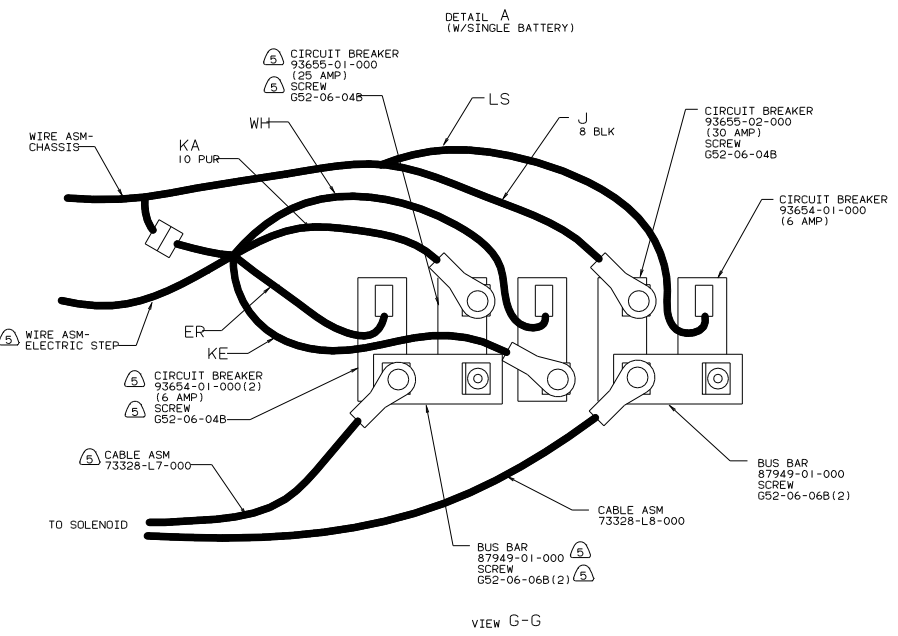
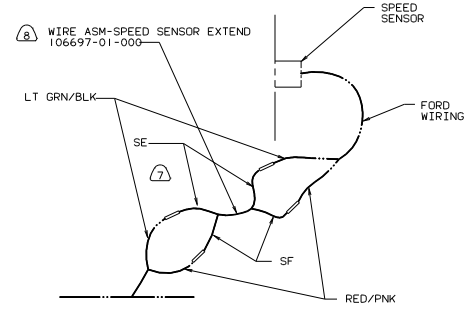
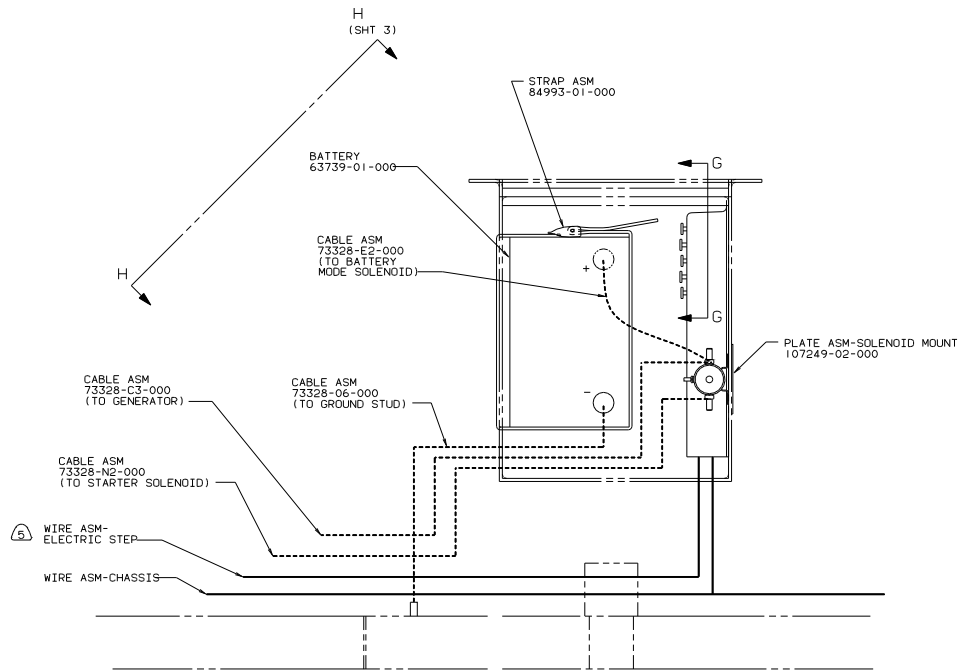


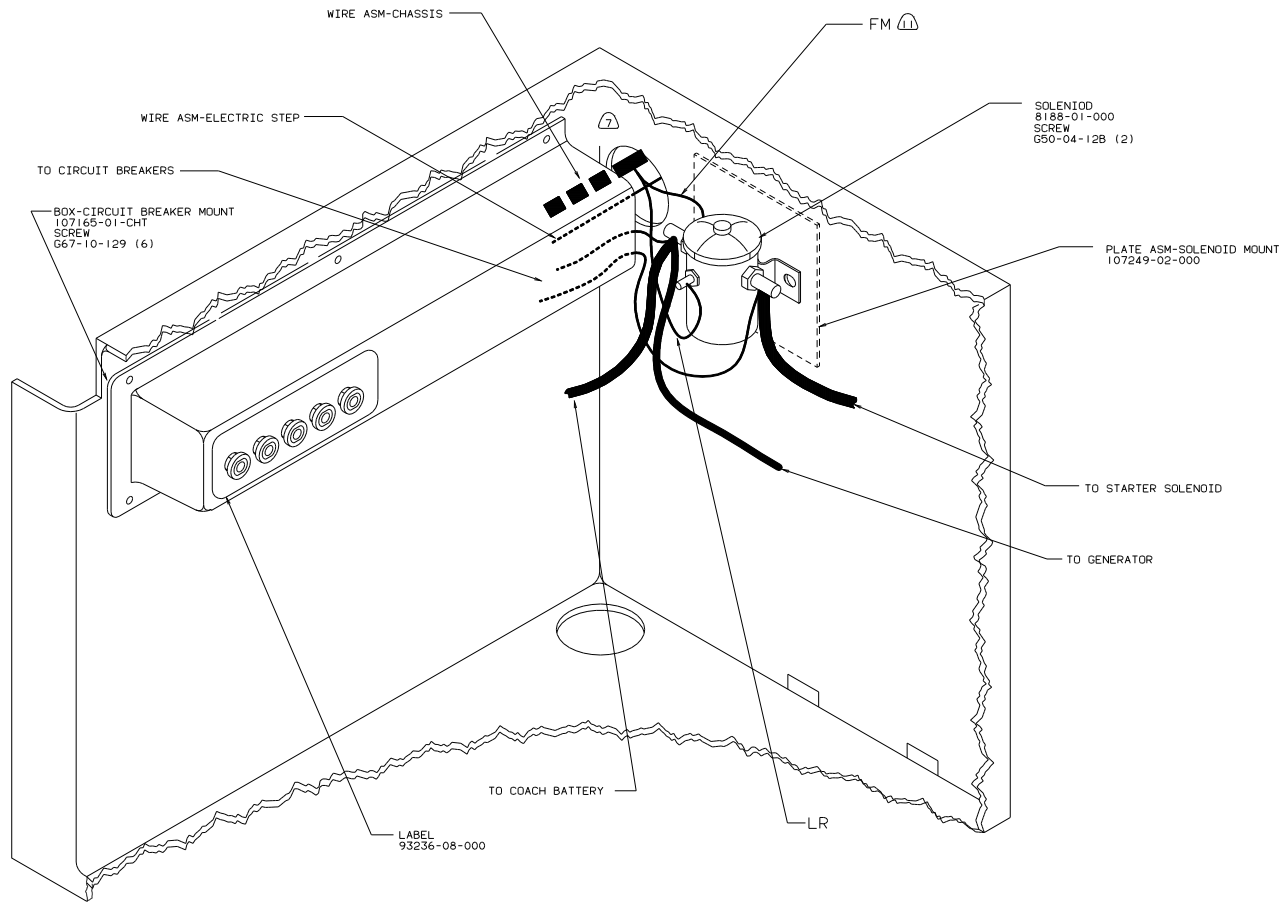
- 10 DIESEL CHASSIS ONLY. DRILL 64 DIA HOLE THRU STEEL BACKING FOR SWITCH CLEARANCE.
- 9 LOCATE BOX VERTICALLY BY CENTERING ON HOLE IN REAR OF COMPT.
- 8 APPLY HEAT TO SPLICES TO ACTIVATE EPOXY AND SHRINK JACKETS AROUND WIRES. COVER EXPOSED WIRING WITH CONVOLUTED TUBING AND TAPE.
- 7 CUT WIRE AND RECONNECT AS SHOWN.
- 6 SECURE WITH SOLENOID MOUNTING SCREW.
- 5 WITH ELECTRIC STEP.
- 4 USE WITH MOTOR AID HEATER ONLY.
- 3 USE WIRE TIES 8343-01-000 AND WIRE CLAMP 10497-01-000 APPROXIMATELY 600MM ON CENTER UNLESS OTHERWISE SPECIFIED.
- 2 SECURE CONDUIT 41953-01-000 OVER ALL WIRE IN CONTACT WITH SHARP EDGES.
- 1 LEGEND: --- FORD WIRING --- WINNEBAGO WIRING - - - - - CABLE.

VIEW F-F (BATTERY MODE, REAR AUTO HEATER SWITCH CUTOFF)

		92 W/1F527RC
QTY	UNSPECIFIED TOLERANCES ARE:	MATERIAL
CHAM	ANGLE DIM (X) = 1:1.5	
F/FE	ONE-PLACE (X.X1)	
F/E	TWO-PLACE (X.XX)	
F/E	ANGLE	
CONP	THIRD ANGLE PREDICTION	
LANST	TITLE: WIRING INSTL-CHASSIS DIA # SCALE: NONE 30 MET SCALE: DRAWING SHEET 1 OF 3 ALL DIMENSIONS ARE IN MILLIMETERS SHEET 1 OF 3	
8	7	105104



TITLE: WIRING INSTL-CHASSIS	
30 NET SCALE DRAWING	REV 1
SHEET 2 OF 3	DATE 11/01/04



VIEW H-H

92 W/IF527RC

TITLE: WIRING INSTL-CHASSIS	
30 NET SCALE DRAWING	REV 1
SHEET 3 OF 3	DATE 105104