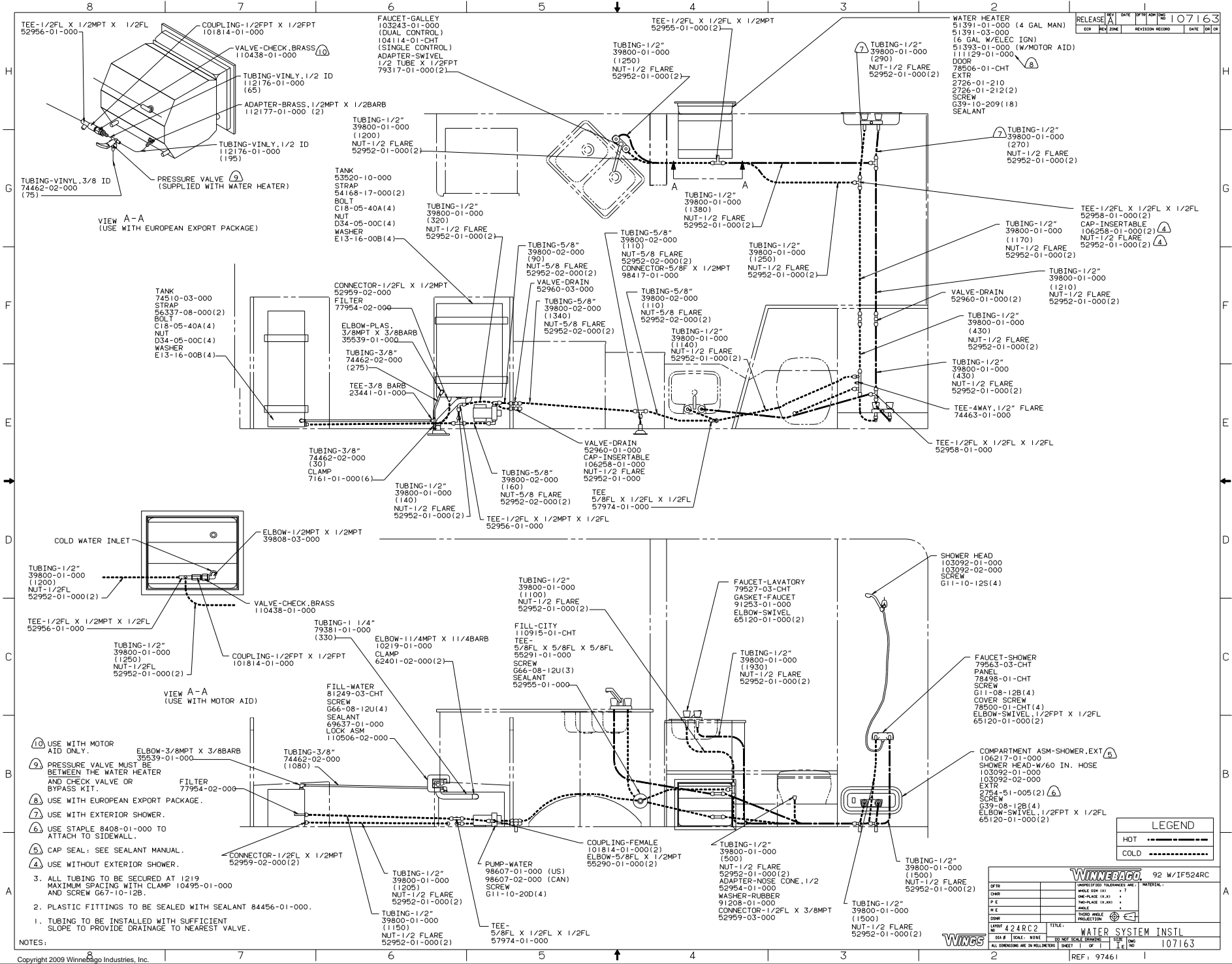


- ② USE WITHOUT SURROUND.
 - ③ USE WITH SURROUND.
 - ⑦ SECURE VENT TUBES TO FLOOR.
 - ⑥ VENT PIPE MUST PROJECT 51" MINIMUM TO 64" ABOVE ROOF FOR PROPER FIT AND FUNCTION.
 - ⑤ SEE DRAWING 61607-01-000 FOR INSTALLATION OF GROMMET.
4. ALL EXTERIOR OPENINGS AROUND PIPE TO BE SEALED.
 3. ALL PIPE AND FITTINGS TO BE ASSEMBLED WITH SOLVENT 4020-01-000.
 2. SLOPE OF TRAP ARM MUST BE 6 PER 305.
 1. SLOPE OF HORIZONTAL PIPING TO BE 6 PER 305.

WINNERS 92 W/F424RC

DATE	UNSPECIFIED TOLERANCES ARE:	MATERIAL
DRWG	WHOLE DIM (IN)	1/8"
PIPE	ONE-PLACE (IN.XI)	1/16"
PIPE	TWO-PLACE (IN.XI)	1/32"
ANGLE	ANGLE	
CONDR	TRUSS ANGLE PROJECTION	

LANOT 424RC2 TITLE: DRAINAGE SYSTEM INSTL
 DIA # SCALE: NONE DO NOT SCALE DRAWING
 ALL DIMENSIONS ARE IN MILLIMETERS SHEET 1 OF 1 106942



VIEW A-A
(USE WITH EUROPEAN EXPORT PACKAGE)

VIEW A-A
(USE WITH MOTOR AID)

VIEW A-A
(USE WITH MOTOR AID)

- ⑩ USE WITH MOTOR AID ONLY.
- ⑨ PRESSURE VALVE MUST BE BETWEEN THE WATER HEATER AND CHECK VALVE OR BYPASS KIT.
- ⑧ USE WITH EUROPEAN EXPORT PACKAGE.
- ⑦ USE WITH EXTERIOR SHOWER.
- ⑥ USE STAPLE 8408-01-000 TO ATTACH TO SIDEWALL.
- ⑤ CAP SEAL: SEE SEALANT MANUAL.
- ④ USE WITHOUT EXTERIOR SHOWER.

3. ALL TUBING TO BE SECURED AT I219 MAXIMUM SPACING WITH CLAMP 10495-01-000 AND SCREW 667-10-12B.
2. PLASTIC FITTINGS TO BE SEALED WITH SEALANT 84456-01-000.
1. TUBING TO BE INSTALLED WITH SUFFICIENT SLOPE TO PROVIDE DRAINAGE TO NEAREST VALVE.

NOTES:

LEGEND	
	HOT
	COLD

WINNABAGO 92 W1F524RC	
DATE	UNSPECIFIED TOLERANCES ARE IN MATERIAL.
CHKD	SCALE (IN.) 1" = 1"
FILE	SCALE (IN.) 1" = 1"
DATE	SCALE (IN.) 1" = 1"
CHKD	SCALE (IN.) 1" = 1"
DATE	SCALE (IN.) 1" = 1"
TITLE: WATER SYSTEM INSTL	
REF: 97461	107163