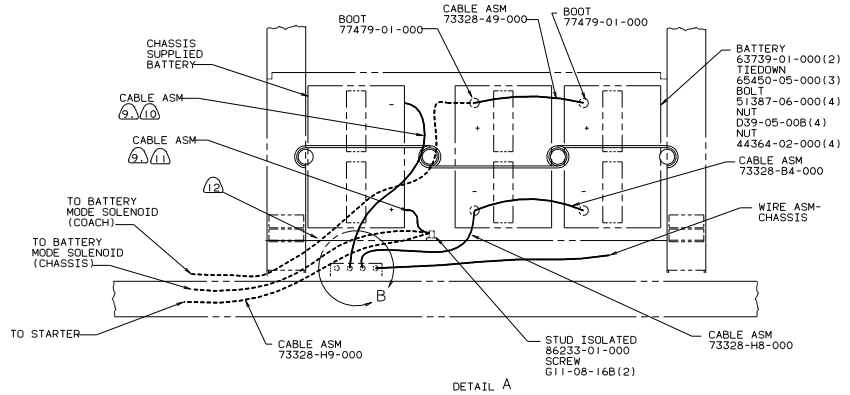
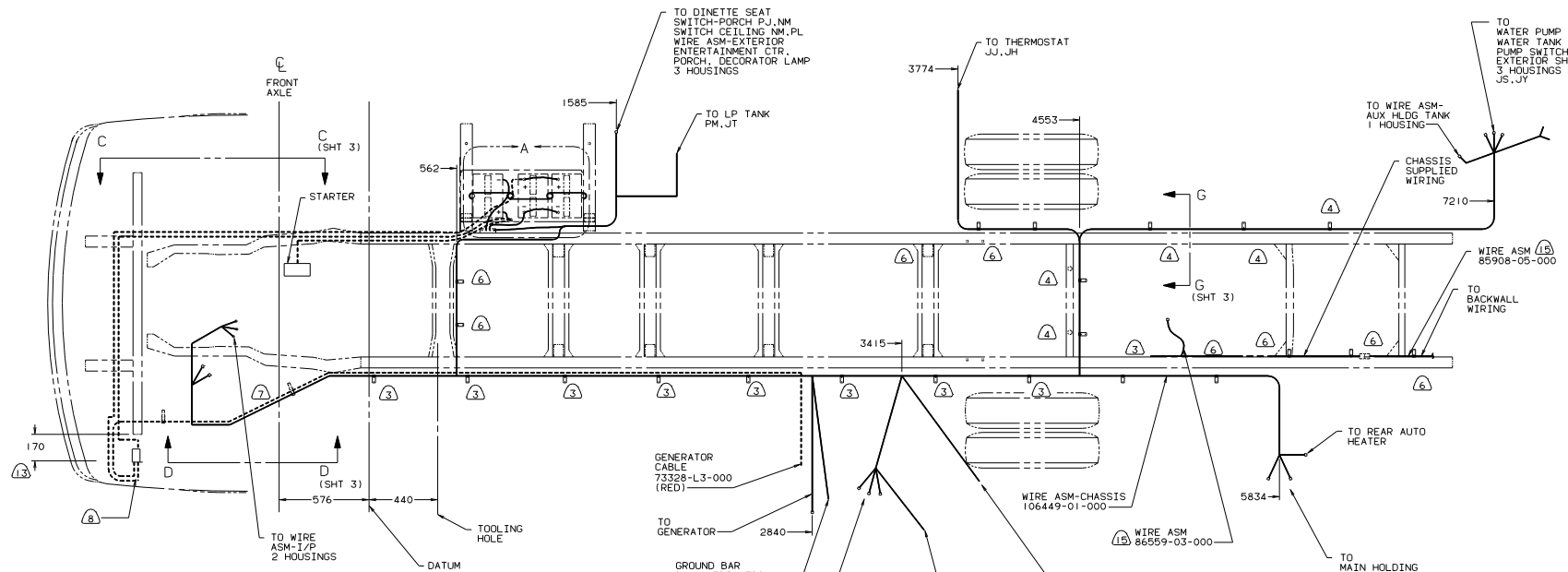


DETAIL B



DETAIL A



- (15) REQUIRED FOR STRECHED CHASSIS (178" TO 190" WB).
- (14) CLAMP 83610-02-000, SCREW G11-10-16B.
- (13) LAY BATTERY AND GENERATOR CABLES TO THIS DIMENSION FROM END OF CHASSIS CROSSMEMBER TO START INSTALLATION.
- (12) COVER EDGE OF HOLE THROUGH BATTERY BOX WITH TRIM-VINYL 72368-02-000.
- (11) TRIM CABLE TO 400MM, ADD TERMINAL 8348-01-000.
- (10) TRIM CABLE TO 600MM, ADD TERMINAL 8348-01-000.
- (9) SUPPLIED WITH CHASSIS.
- (8) SEE WIRING INSTL-FRONT END FOR WIRING CONNECTIONS.
- (7) COVER WITH CONDUIT 41953-09,-10,-11-000 AS REQUIRED.
- (6) CLAMP 10497-01-000, SCREW G11-10-16B.
- (5) CLAMP 10497-03-000, SCREW G11-10-16B.
- (4) CLAMP 83609-01-000, SCREW G11-10-16B.
- (3) CLAMP 83610-01-000, SCREW G11-10-16B.

2. SECURE CONDUIT 41953-01-000, 41953-02-000 AND 41953-03-000 OVER ALL WIRES IN CONTACT WITH SHARP EDGES.

1. LEGEND: ——— WINNEBAGO WIRING, - - - - CABLE, - - - - GM WIRING.

NOTES:

CHEVY

UNSPECIFIED TOLERANCES ARE:		MATERIAL:	
CHDR	FRONT VIEW (R)	FRONT VIEW (R)	FRONT VIEW (R)
P/E	END-PLATE (L,R)	END-PLATE (L,R)	END-PLATE (L,R)
W/E	ANGLE	ANGLE	ANGLE
CDR	THIRD ANGLE PROJECTION	THIRD ANGLE PROJECTION	THIRD ANGLE PROJECTION

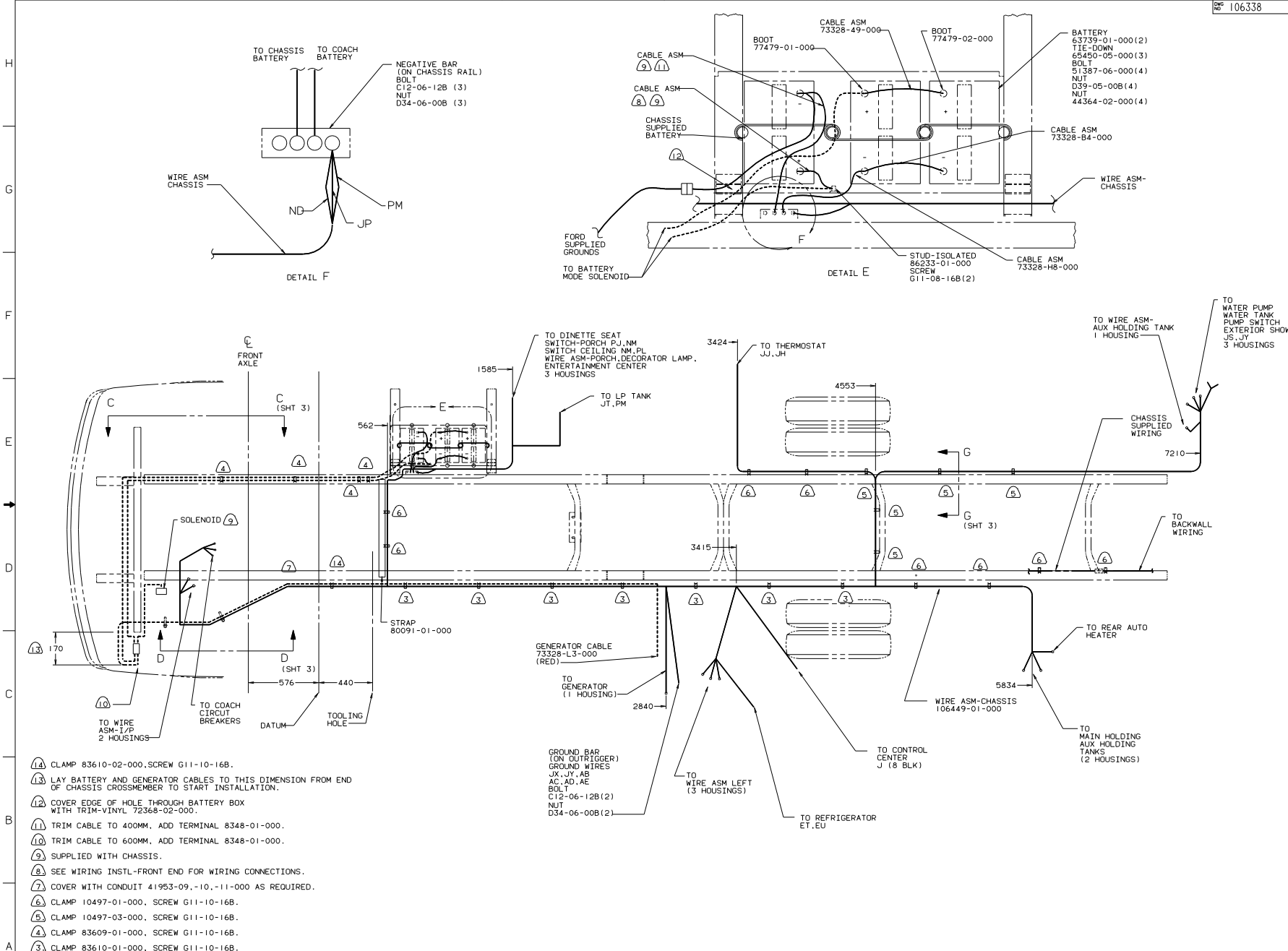
WINNEBAGO 92 W/ICF31R0

LAYOUT F31R02 TITLE: WIRING INSTL-CHASSIS

SCALE: NONE DO NOT SCALE DIMENSIONS

DATE: 10/10/00 SHEET 1 OF 3

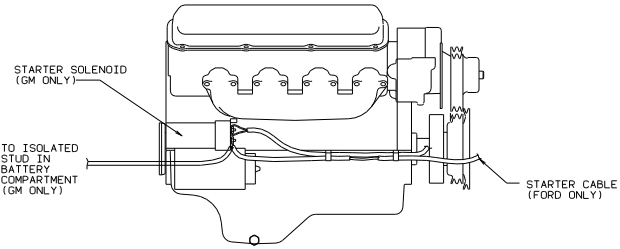
REF: 103916 106338



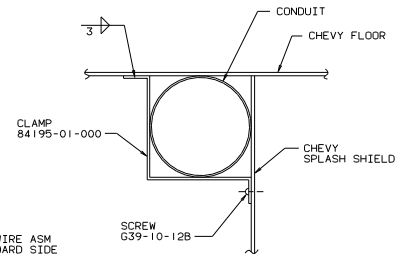
- (14) CLAMP 83610-02-000, SCREW G11-10-16B.
- (13) LAY BATTERY AND GENERATOR CABLES TO THIS DIMENSION FROM END OF CHASSIS CROSSMEMBER TO START INSTALLATION.
- (12) COVER EDGE OF HOLE THROUGH BATTERY BOX WITH TRIM-VINYL 72368-02-000.
- (11) TRIM CABLE TO 400MM. ADD TERMINAL 8348-01-000.
- (10) TRIM CABLE TO 600MM. ADD TERMINAL 8348-01-000.
- (9) SUPPLIED WITH CHASSIS.
- (8) SEE WIRING INSTL-FRONT END FOR WIRING CONNECTIONS.
- (7) COVER WITH CONDUIT 41953-09,-10,-11-000 AS REQUIRED.
- (6) CLAMP 10497-01-000, SCREW G11-10-16B.
- (5) CLAMP 10497-03-000, SCREW G11-10-16B.
- (4) CLAMP 83609-01-000, SCREW G11-10-16B.
- (3) CLAMP 83610-01-000, SCREW G11-10-16B.

2. SECURE CONDUIT 41953-01-000, 41953-02-000 AND 41953-03-000 OVER ALL WIRES IN CONTACT WITH SHARP EDGES.

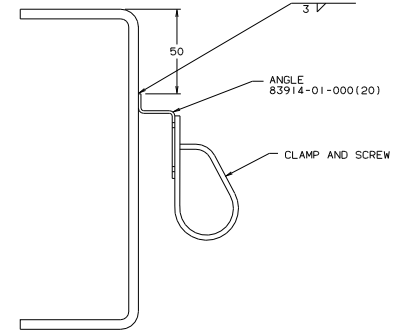
1. LEGEND: — WINNEBAGO WIRING. - - - - CABLE. - - - - GM WIRING.



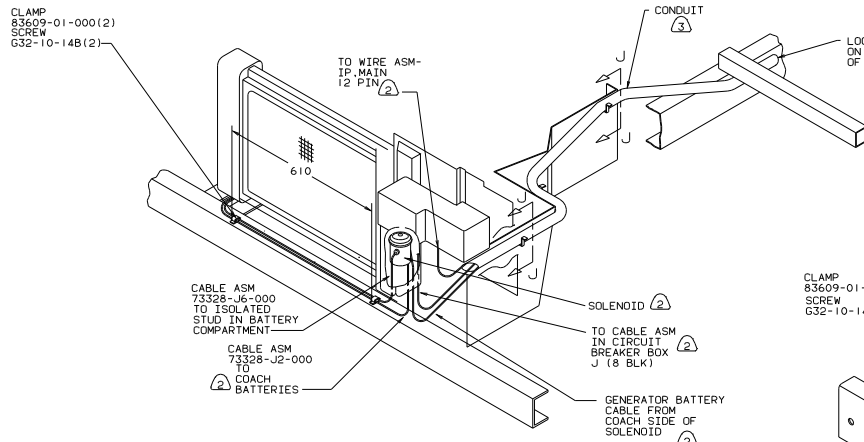
VIEW C-C



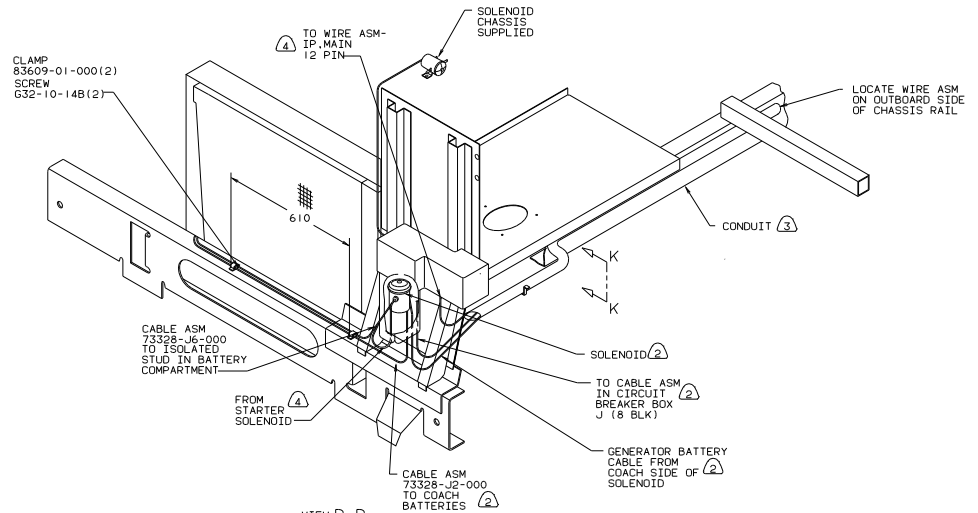
VIEW J-J (2 PLCS)



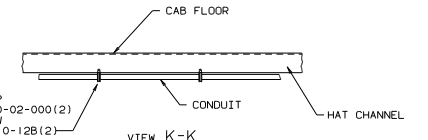
VIEW G-G



VIEW D-D (GM)



VIEW D-D (FORD)



VIEW K-K

- NOTES:
- ④ TRIM CABLE TO 1100MM, ADD TERMINAL 8348-01-000.
  - ③ COVER WITH CONDUIT-41953-09,-10,-11-000 AS REQUIRED.
  - ② FOR ADDITIONAL INFORMATION, SEE WIRING INSTL. FRONT END.
  - ① BATTERY CABLE MUST BE INSTALLED TO STARTER MOTOR BEFORE ENGINE WIRING HARNESS AND ROUTED IN SUCH A MANNER AS TO PREVENT ANY POSSIBLE DEGRADATION FROM THE EXHAUST SYSTEM.