

- ① LOCATE CLAMP ON GALLEY CABINET FOR PROPER SLOPE.
- ② SECURE VENT TUBES TO FLOOR.
- ③ VENT PIPE MUST PROJECT 51MM MIN TO 64MM MAX ABOVE ROOF FOR PROPER FIT AND FUNCTION.
- ④ SEE DWG 61607-01-000 FOR INSTL OF GROMMET.
- ⑤ SEAL ALL AROUND BATHTUB WITH SILICONE 78474-01-CHT.
5. FOR CANADIAN UNITS EACH HOLDING TANK SHALL HAVE A CSA APPROVAL STAMPED NEAR THE IAPMO APPROVAL.
6. ALL EXTERIOR OPENINGS AROUND PIPE TO BE SEALED WITH 69637-01-000.
7. ALL PIPE AND FITTINGS TO BE ASSEMBLED WITH SOLVENT 4020-01-000.
8. SLOPE OF TRAP MUST BE 6 PER 300 MINIMUM.
9. SLOPE OF HORIZONTAL PIPING TO BE 6 PER 300 MINIMUM.

VIEW FROM CL OF VEHICLE

WINNEBAGO 91 W/ICP33RO

DATE	REV	BY	CHK	APP	TITLE
					DRAINAGE SYSTEM INSTL

UNSPECIFIED TOLERANCES ARE MATERIAL.

WHOLE DIM (1:1) ± .3

FRACTIONAL DIM (1:1) ± .1

ANGLE (1:1) ± .1

THIRD ANGLE PROJECTION

SCALE: NONE

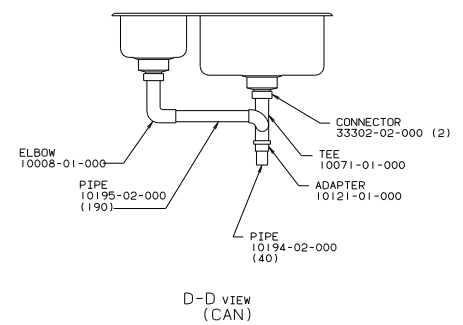
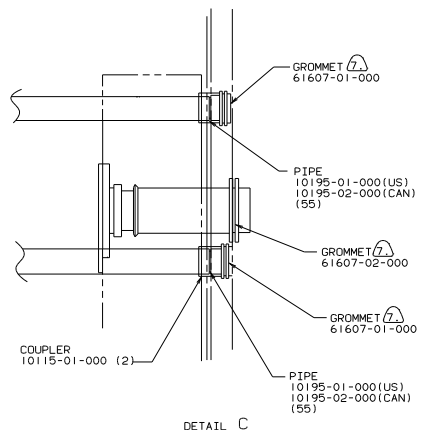
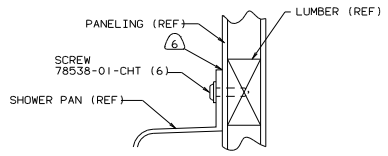
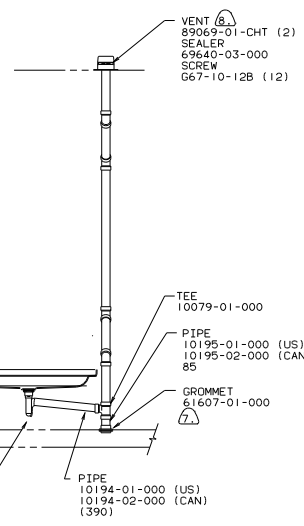
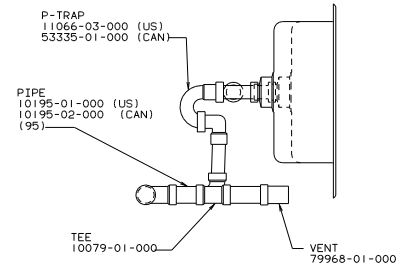
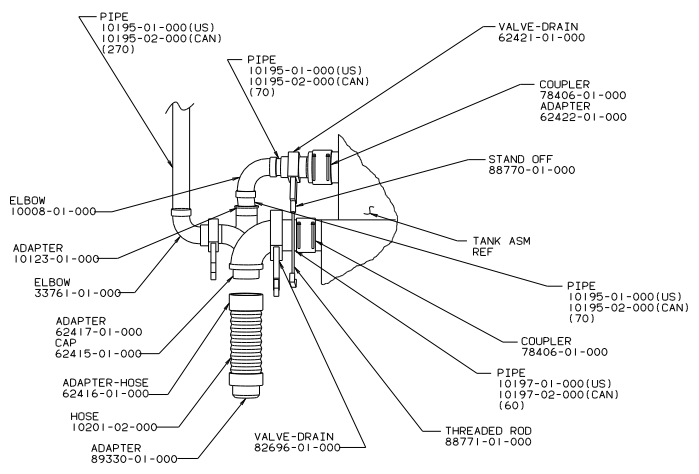
DO NOT SCALE DIMENSIONS

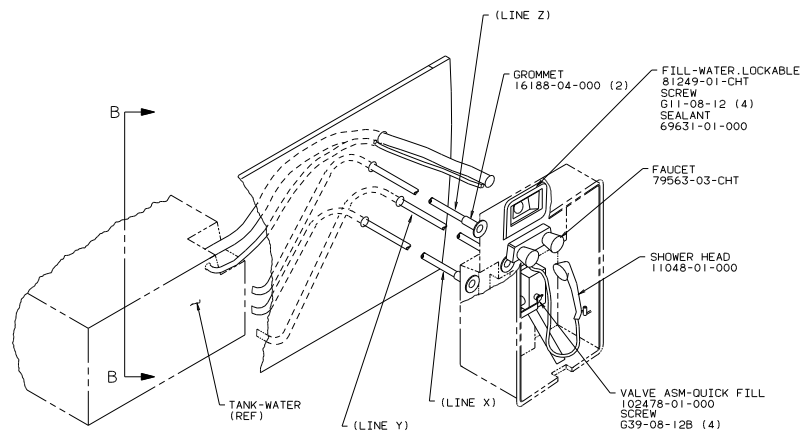
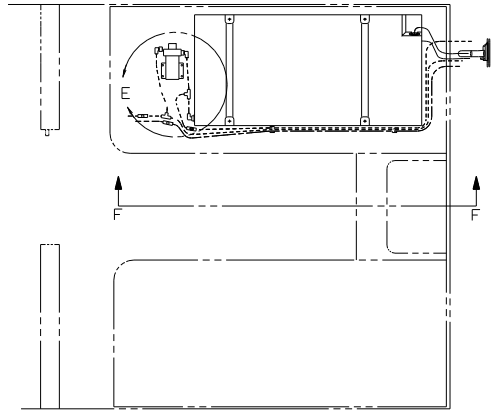
ALL DIMENSIONS ARE IN MILLIMETERS

SHEET 1 OF 2

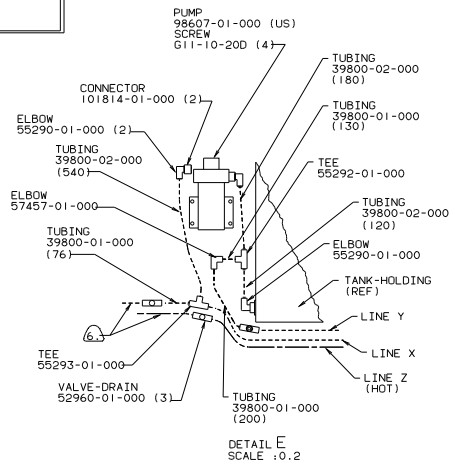
REF: 97764

102138

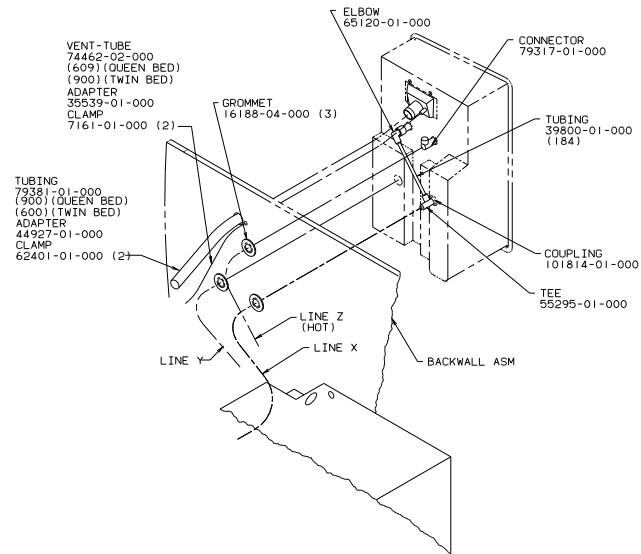




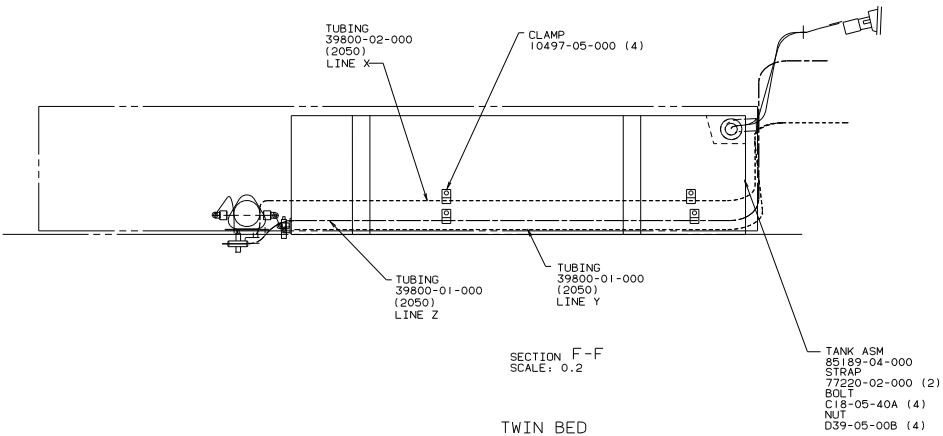
VIEW A-A
SCALE: 0.2



DETAIL E
SCALE: 0.2



VIEW B-B
SCALE: 0.2

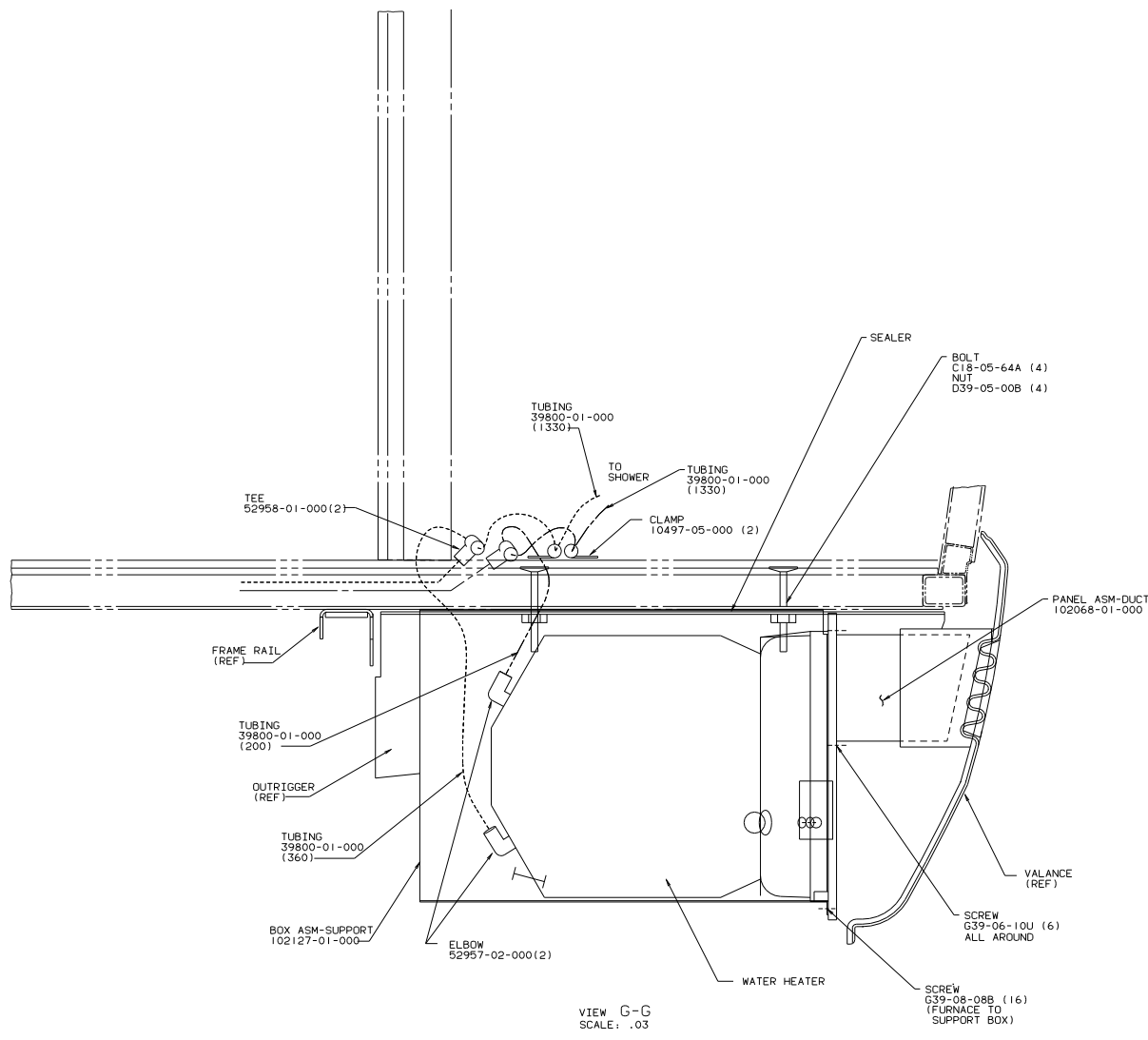


SECTION F-F
SCALE: 0.2

TWIN BED

- TANK ASM 85189-04-000
- STRAP 77220-02-000 (2)
- BOLT C18-05-40A (4)
- NUT D39-05-00B (4)

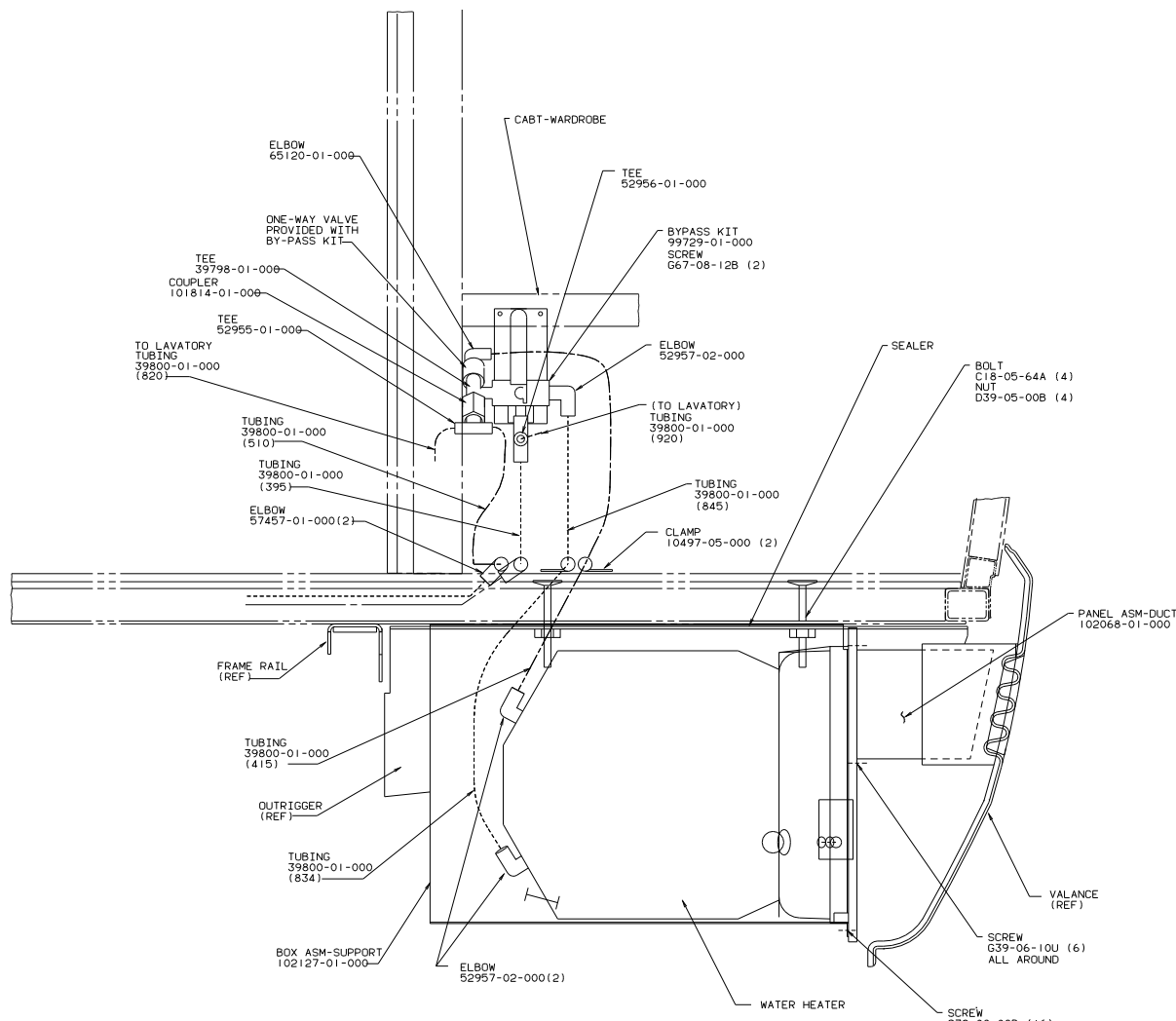
TITLE: WATER SYSTEM INSTL	
DO NOT SCALE DRAWING	REF ID: A
SHEET 2 of 4	102142



W/O WATER HEATER
 BYPASS OPTION

91 W/1CP33R0

TITLE		WATER SYSTEM INSTL	
DO NOT SCALE DRAWING	DATE	REV	102142
SHEET 3 OF 4	1	1	



VIEW G-G
SCALE: .03

W/ WATER HEATER
BYPASS OPTION

91 W/1CP33R0

TITLE		WATER SYSTEM INSTL	
DO NOT SCALE DIMENSIONS	1/8" = 1'	DATE	102142
SHEET #	OF #	REV	