

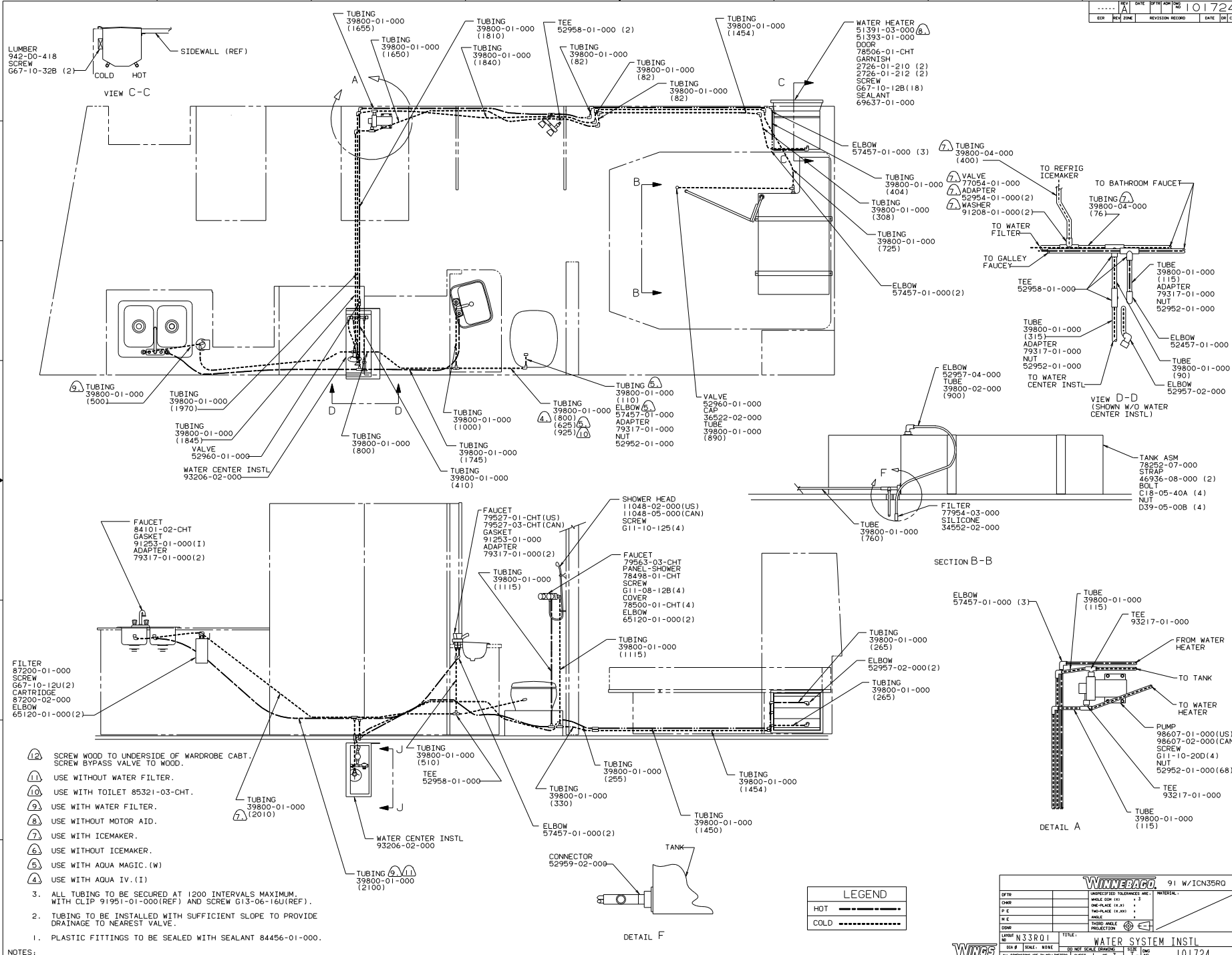
- (10) SEE DRAWING 93128-02-000 FOR TANK INSTALLATION.
 - (9) LOCATE CLAMP ON GALLEY CABINET FOR PROPER SLOPE.
 - (8) SECURE VENT TUBES TO FLOOR.
 - (7) VENT PIPE MUST PROJECT 51 MM MIN TO 64 MM MAX ABOVE ROOF FOR PROPER FIT AND FUNCTION.
 - (6) SEE DWG 61607-01-000 FOR INSTL OF GROMMET.
5. SEAL ALL AROUND SHOWER WITH SILICON 78474-01-CHT.
 4. FOR CANADIAN UNITS EACH HOLDING TANK SHALL HAVE A CSA APPROVAL STAMPED NEAR IAPMO APPROVAL.
 3. ALL PIPE AND FITTINGS TO BE ASSEMBLED WITH SOLVENT 4020-01-000.
 2. SLOPE OF TRAP MUST BE 6 PER 300 MINIMUM.
 1. SLOPE OF HORIZONTAL PIPING TO BE 6 PER 300 MINIMUM.

NOTES: Copyright 2009 Winnebago Industries, Inc.

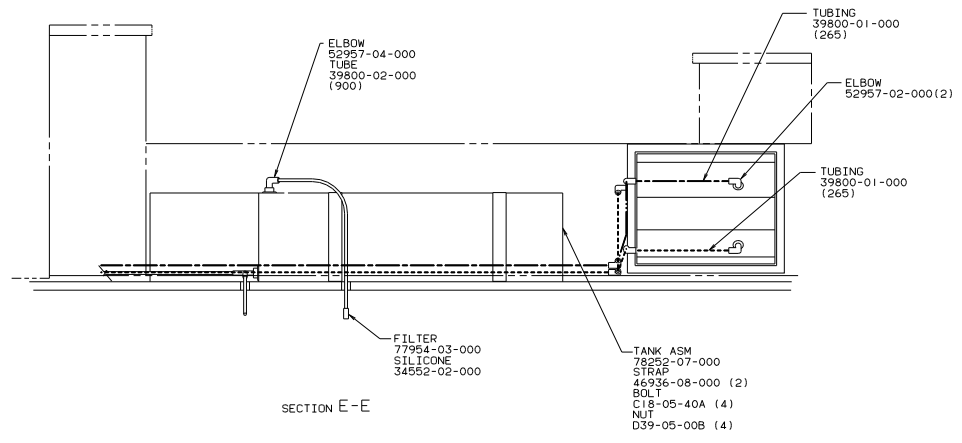
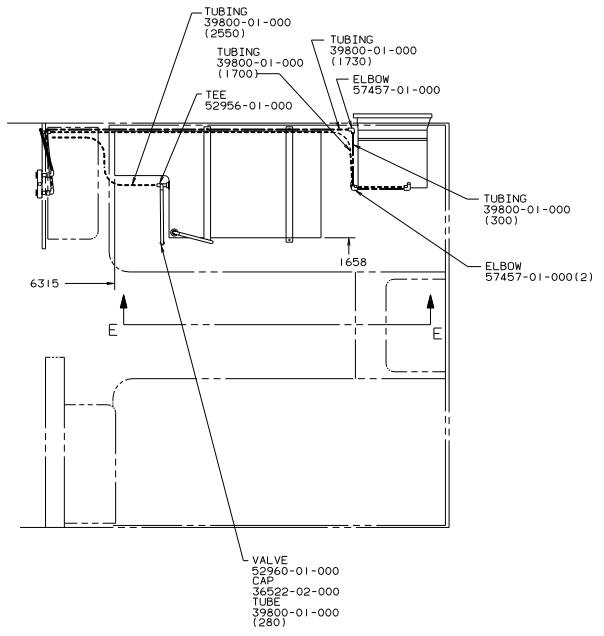
DETAIL B

VIEW A-A

		91 W/ICN34R0	
DTN DWG P/E W/E DRWG	UNSPECIFIED TOLERANCES ARE: HOLE DIM (H) +0.00 DIM-PLACES (H,K,L) ±0.00 DIM-PLACES (M,N) ±0.00 THRU-HOLE PRODUCTION	MATERIAL: FILE NO.	
PART NO. N33R00 QTY # SCALE: NONE ALL DIMENSIONS ARE IN MILLIMETERS		TITLE: DRAINAGE SYSTEM INSTL SHEET 1 OF 1	



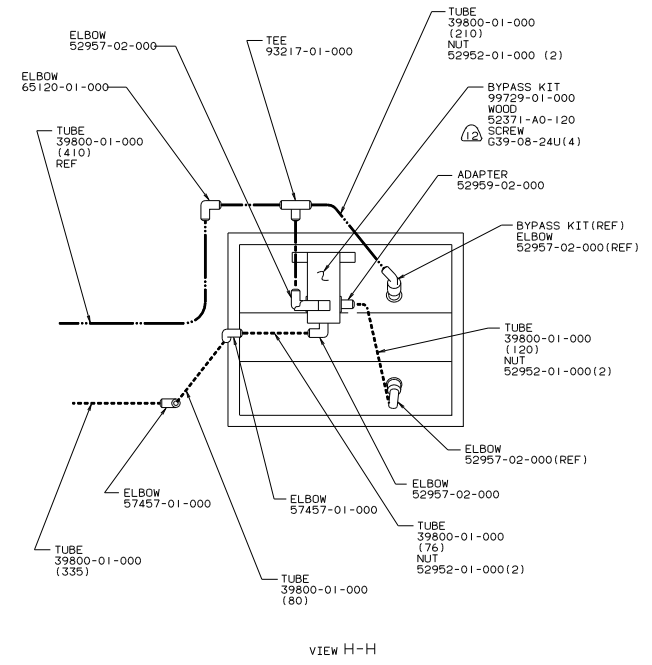
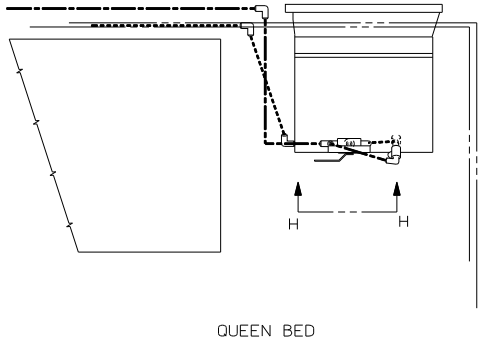
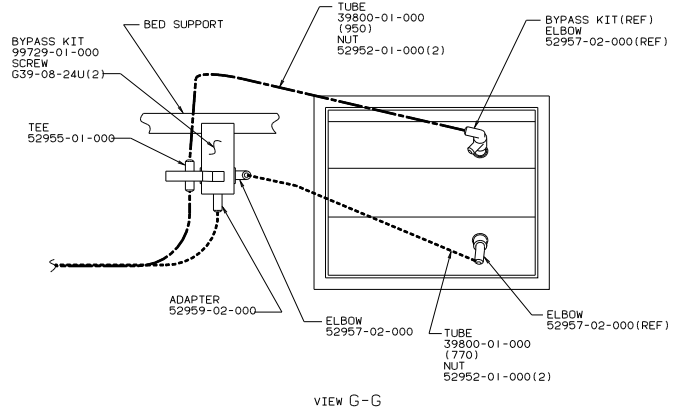
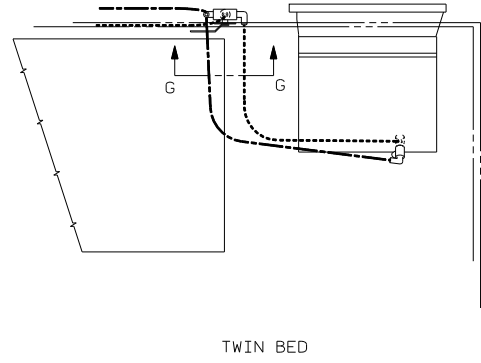
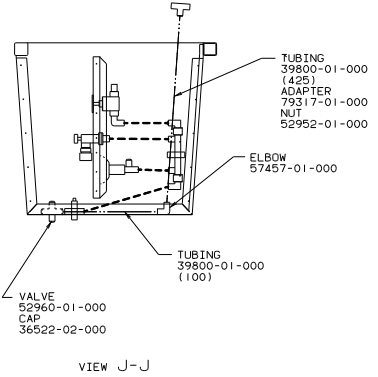
NOTES:
 1. PLASTIC FITTINGS TO BE SEALED WITH SEALANT 84456-01-000.
 2. TUBING TO BE INSTALLED WITH SUFFICIENT SLOPE TO PROVIDE DRAINAGE TO NEAREST VALVE.
 3. ALL TUBING IS TO BE SECURED AT 1200 INTERVALS MAXIMUM. WITH CLIP 91951-01-000(REF) AND SCREW G13-06-16U(REF).



TWIN BED EXCHANGE

91 W/1CN35RD

TITLE: WATER SYSTEM INSTL	
DO NOT SCALE DIMENSIONS	1:12 I.E. 101724
SHEET 2 of 3	



WATER HEATER BYPASS OPTION

91 W/1CN35R0

TITLE		WATER SYSTEM INSTL	
DO NOT SCALE DRAWING	DATE	REV	NO
SHEET 3 OF 3			101724