

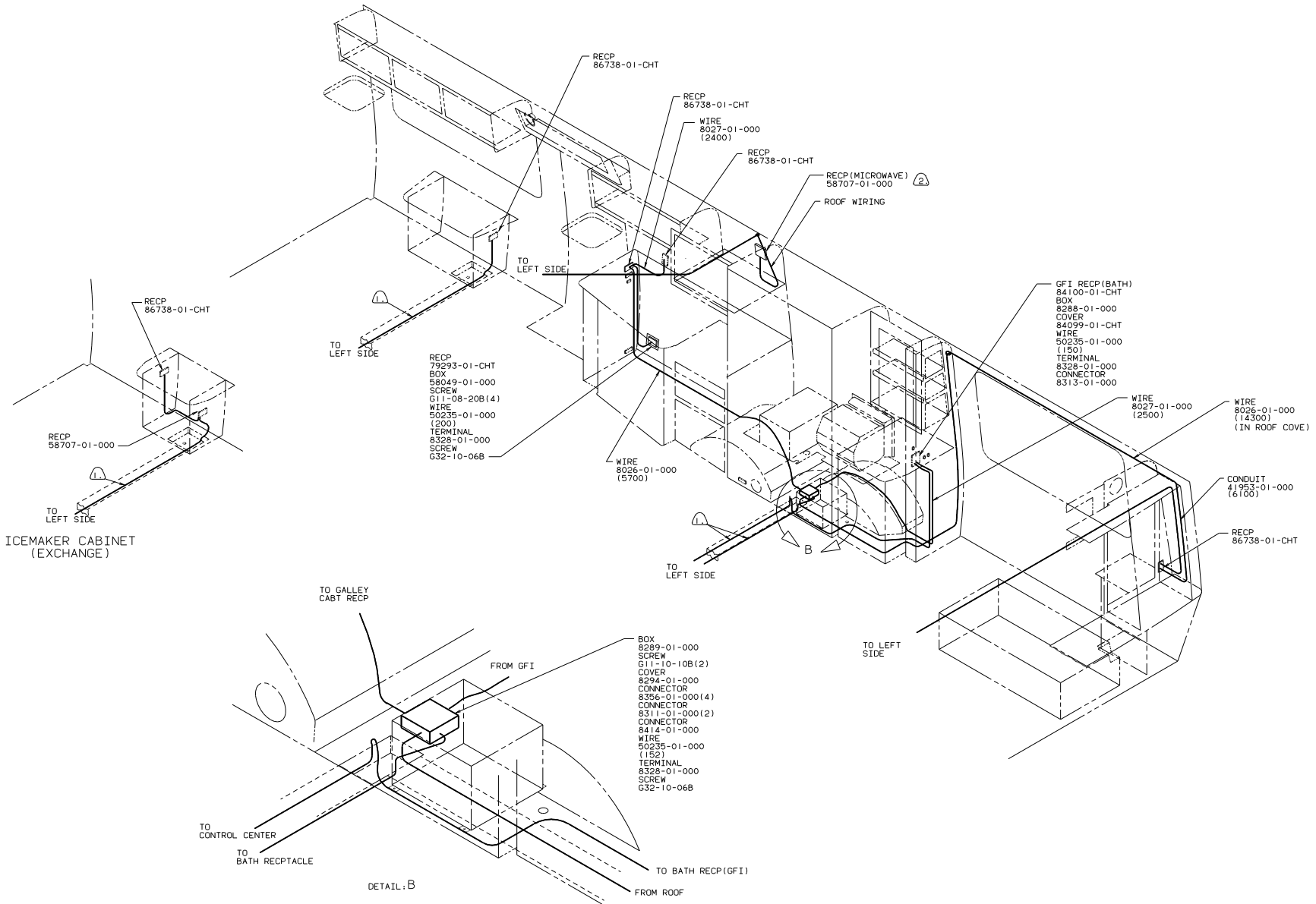
- ① USE WITH REFRIGERATOR WITH ICE MAKER ONLY.
  - ⑩ USE WITH MICROWAVE ONLY.
  - ⑨ USE WITH OUT ROOF AIR CONDITIONER.
  - ⑧ LOCATE RECP 350 ABOVE SHELF.
  - ⑦ WIRE ROUTED IN FLOOR.
  - ⑥ INSTALL RECP TACKLE WITH GROUND TOWARD OUTBOARD SIDE OF VEHICLE.
  - ⑤ SEAL WITH BEDDING COMPOUND 69639-01-000.
  - ④ USE WITH GENERATOR ONLY.
3. ALL GROUND WIRES TO BE COVERED WITH TUBING 8041-02-000.
  2. ALL 110 V WIRES ARE TO BE CLAMPED WITH CLAMP 10497-05-000 WITHIN 200 OF OUTLET BOXES. USE SCREW G67-10-12B.
  1. ALL WIRES TO BE CLAMPED WITH CLAMP 10495-01-000 OR CLIP 80734-01-000 EVERY 1220. USE SCREW G67-10-12B UNLESS OTHERWISE SPECIFIED.

- BOX 8289-01-000
- SCREW G11-10-10B(2)
- WIRE 50235-01-000(2)
- (152)
- TERMINAL 8328-01-000
- CONNECTOR 8314-01-000
- CONNECTOR 8311-01-000(2)
- SCREW G32-10-06B
- COVER 8294-01-000

VIEW: A-A 8140 REF  
 VIEW: ROTATED 180°

110V (US)

WINNERAGO 90 W/1CP37RD	
DATE	UNSPECIFIED TOLERANCES ARE:
CHKD	FRONT END (R)
BY	ONE-PLACE (R, X)
BY	NO-PLACE (R, X)
BY	ANGLE
BY	TRUSS ANGLE
BY	PROJECTION
LANE	NONE
TITLE:	WIRING INSTL-BODY
DIA #	SCALE: NONE
ALL DIMENSIONS ARE IN MILLIMETERS	SHEET 1 OF 11
97883	

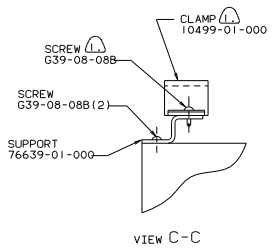
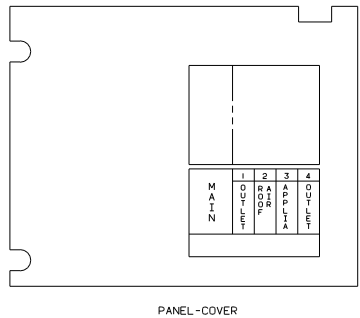
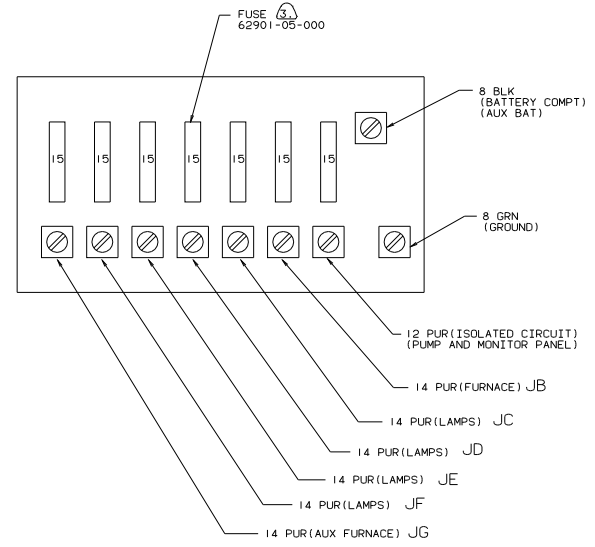
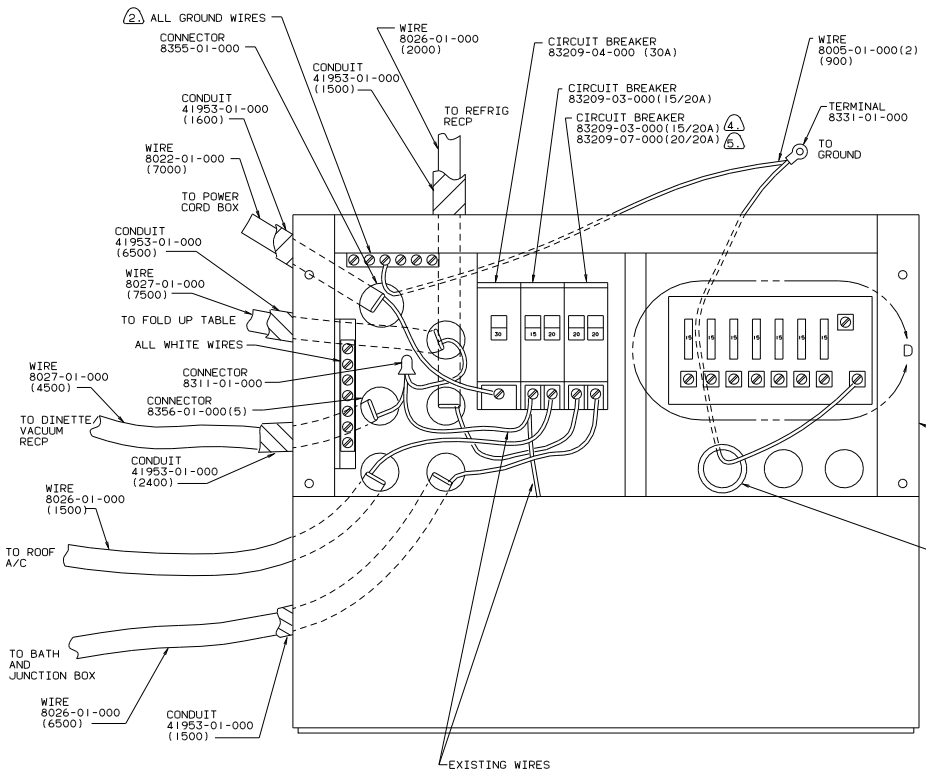


- ② USE WITH MICROWAVE EXCHANGE.
- ⚠ WIRE ROUTED IN FLOOR.

NOTES:

110V (US)  
90 W/ICP37RO

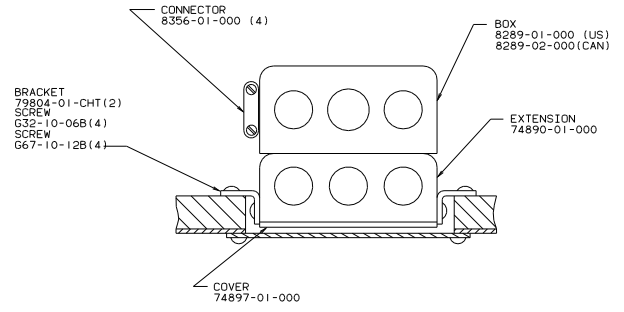
TITLE: WIRING INSTL-BODY	
30 NET SCALE DRAWING	FILE NO 97883
SHEET 2 OF 11	1 E



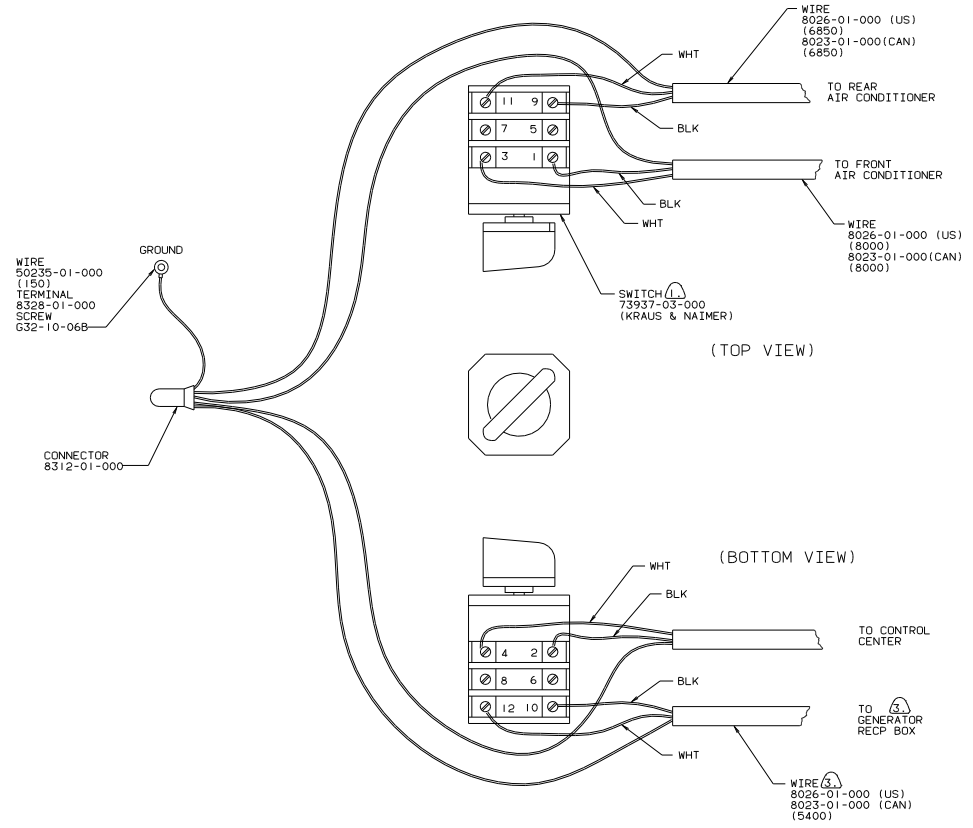
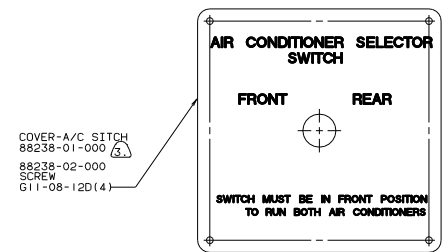
- ⑤ USE WITH MICROWAVE.
- ④ USE WITHOUT MICROWAVE.
- ③ SUPPLIED WITH CONTROL CENTER.
- ② ALL GROUND WIRES TO BE COVERED WITH TUBING 8041-02-000.
- ① FASTEN ALL WIRES TO SUPPORT. USE ONE SCREW AND CLAMP PER WIRE.

CONTROL CENTER (US)  
90 W/ICP37RQ

TITLE	WIRING INSTL-BODY
30 MET SCALE DRAWING	FILE NO
SHEET 3 OF 11	97883



TOP VIEW OF BOX

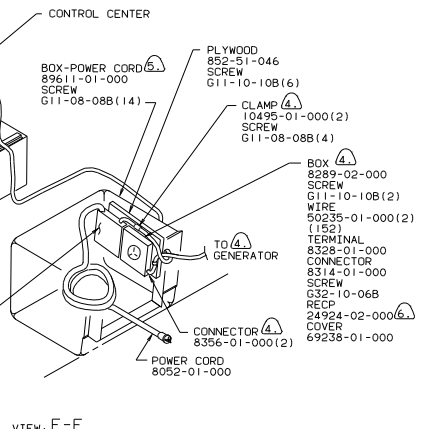
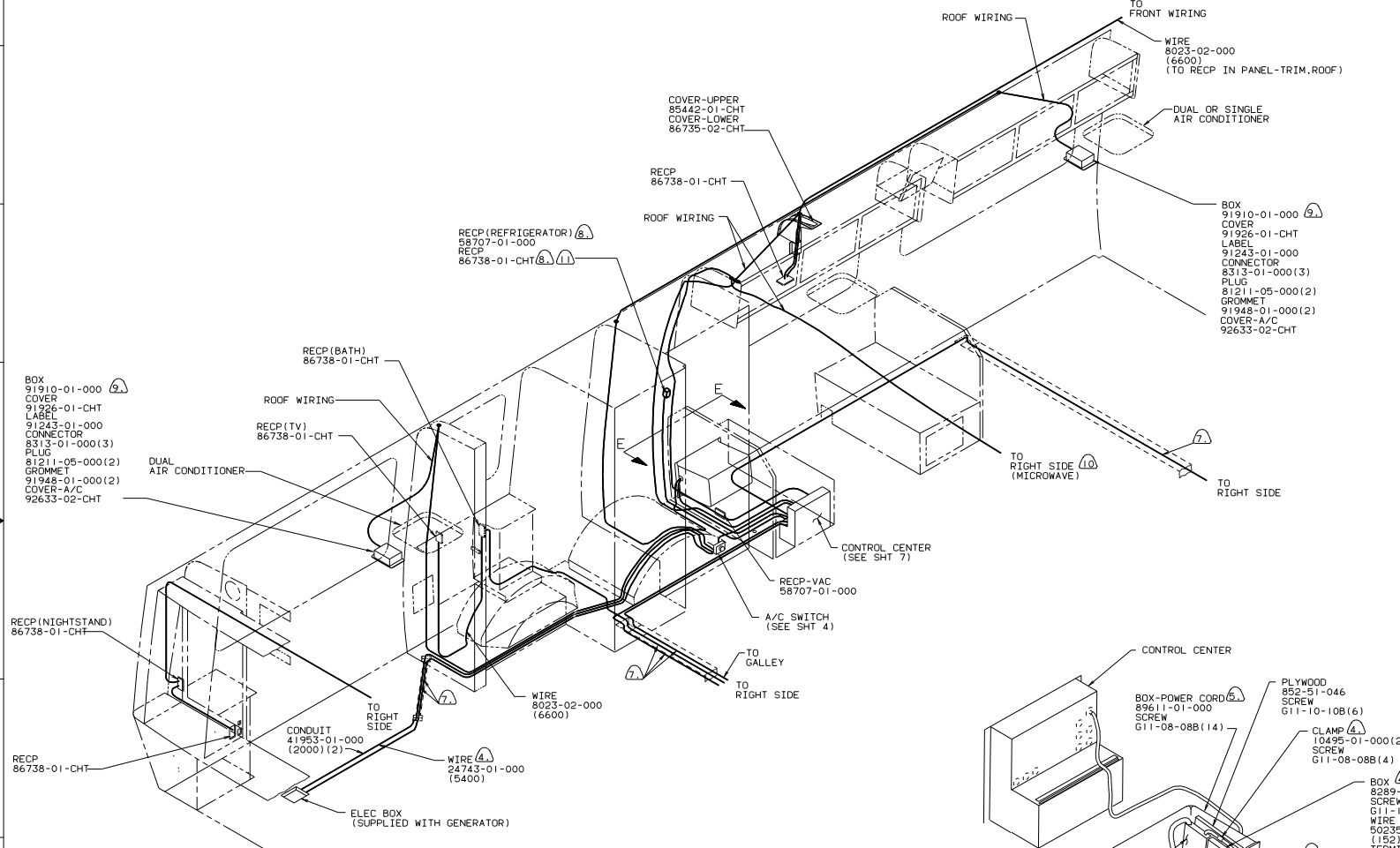


(TOP VIEW)

(BOTTOM VIEW)

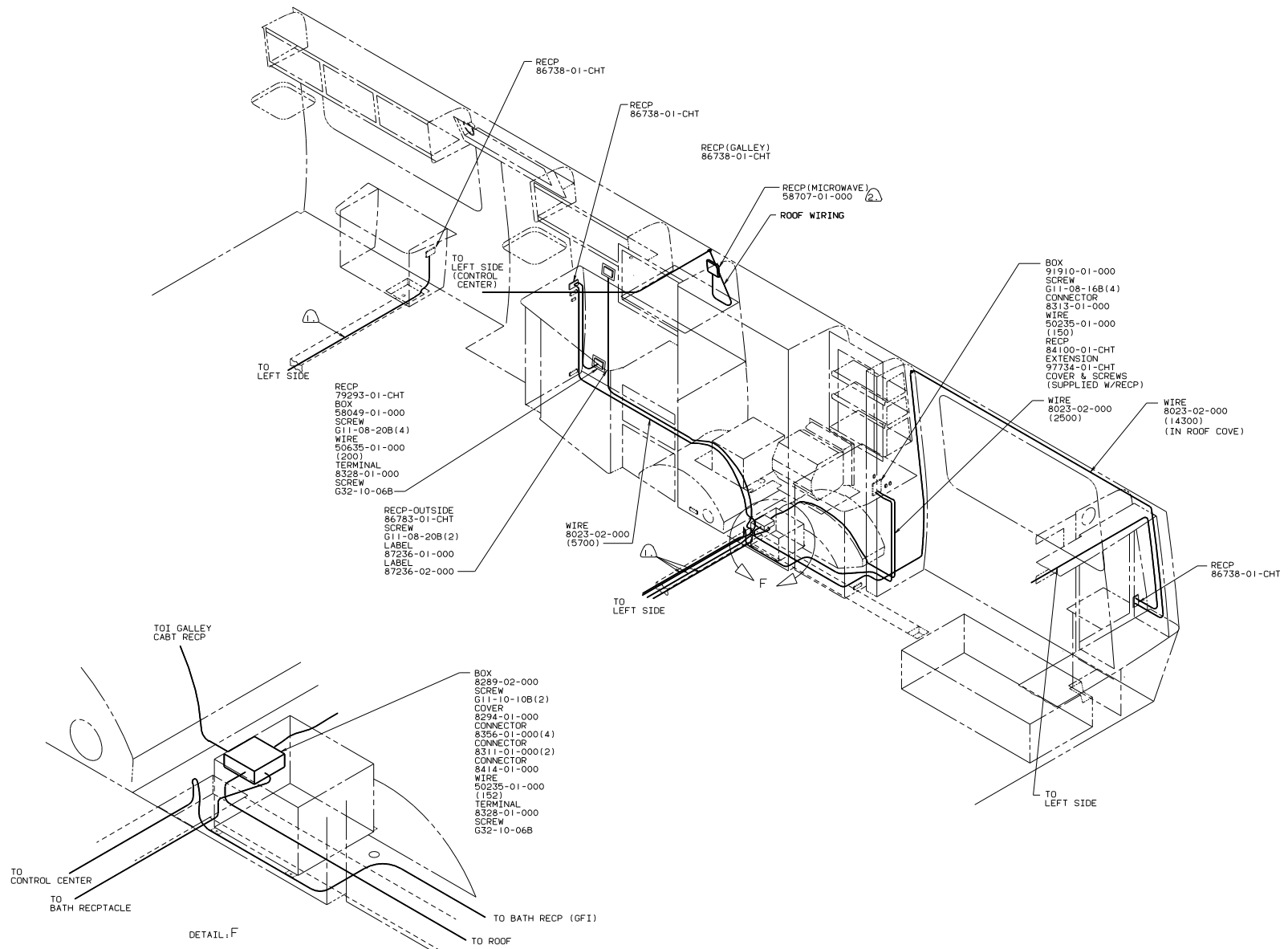
- Ⓐ USE WITH 6500 WATT GENERATOR OF LARGER.
- 2. ALL GROUND WIRES TO BE COVERED WITH TUBING 8041-02-000.
- Ⓐ FASTEN SWITCH TO COVER 74897-01-000 BEFORE FASTENING COVER TO BOX.

TITLE: WIRING INSTL-BODY	
30 NET SCALE DRAWING	FILE NO 97883
SHEET 4 OF 11	1 E



- ① USE WITH REFRIGERATOR WITDSH ICE MAKER ONLY.
  - ② USE WITH MICROWAVE.
  - ③ USE WITHOUT ROOF AIR CONDITIONER.
  - ④ LOCATE RECP 350 ABOVE SHELF.
  - ⑤ WIRE ROUTED IN FLOOR.
  - ⑥ INSTALL RECP TACLE WITH GROUND TOWARD OUTBOARD SIDE OF VEHICLE.
  - ⑦ SEAL WITH BEDDING COMPOUND 69639-01-000.
  - ⑧ USE WITH GENERATOR ONLY.
3. ALL GROUND WIRES TO BE COVERED WITH TUBING 8041-02-000.
  2. ALL 110 V WIRES ARE TO BE CLAMPED WITH CLAMP 10495-05-000 WITHIN 200 OF OUTLET BOXES, USE SCREW G67-10-12B.
  1. ALL WIRES TO BE CLAMPED WITH CLAMP 10495-01-000 OR CLIP 80734-01-000 EVERY 1220. USE SCREW G67-10-12B UNLESS OTHERWISE SPECIFIED.

TITLE: WIRING INSTL-BODY	
30 NET SCALE DRAWING	FILE NO 97883
SHEET 5 OF 11	1



RECP 79293-01-CHT  
 BOX 58049-01-000  
 SCREW G11-08-20B (4)  
 WIRE 50635-01-000 (200)  
 TERMINAL 8328-01-000  
 SCREW G32-10-06B

RECP-OUTSIDE 86783-01-CHT  
 SCREW G11-08-20B (2)  
 LABEL 87236-01-000  
 LABEL 87236-02-000

WIRE 8023-02-000 (5700)

BOX 91910-01-000  
 SCREW G11-08-16B (4)  
 CONNECTOR 8313-01-000  
 WIRE 50235-01-000 (150)  
 RECP 84100-01-CHT  
 EXTENSION 97734-01-CHT  
 COVER & SCREWS (SUPPLIED W/RECP)

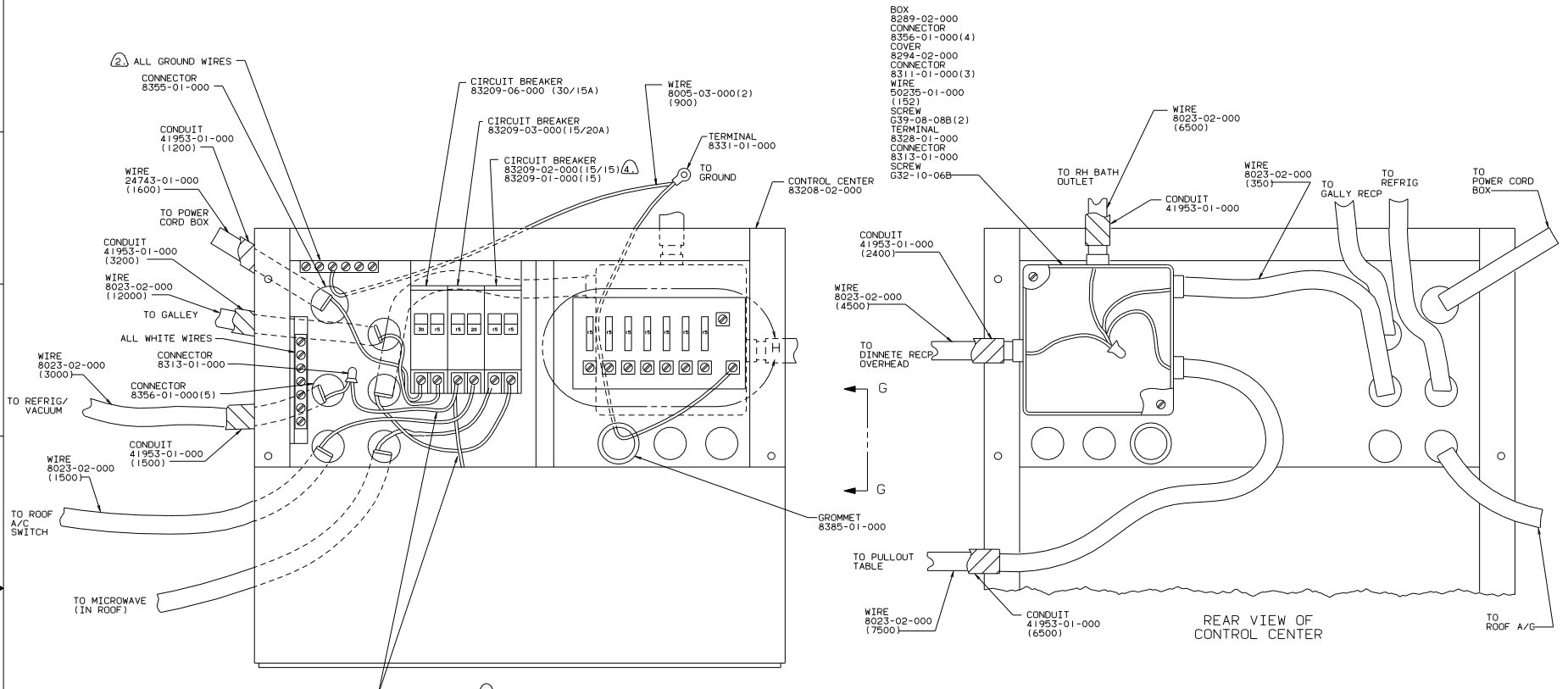
WIRE 8023-02-000 (2500)

WIRE 8023-02-000 (14300) (IN ROOF COVE)

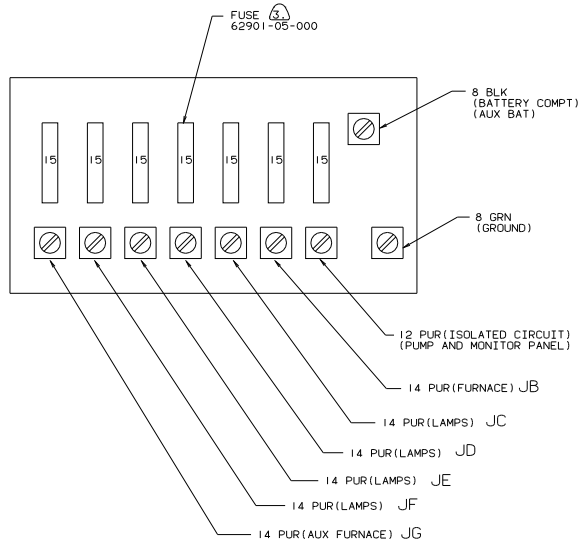
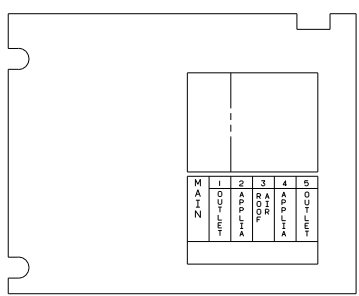
BOX 8289-02-000  
 SCREW G11-10-10B (2)  
 COVER 8294-01-000  
 CONNECTOR 8396-01-000 (4)  
 CONNECTOR 8311-01-000 (2)  
 CONNECTOR 8414-01-000  
 WIRE 50235-01-000 (152)  
 TERMINAL 8328-01-000  
 SCREW G32-10-06B

DETAIL: F

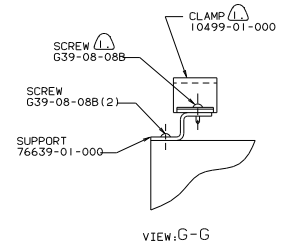
- ② USE WITH MICROWAVE EXCHANGE.
- ⚠ WIRE ROUTED IN FLOOR.



REAR VIEW OF CONTROL CENTER



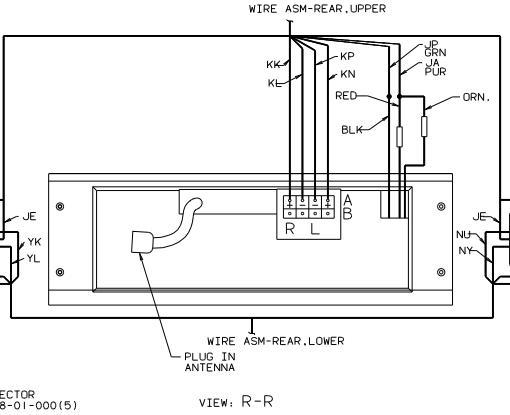
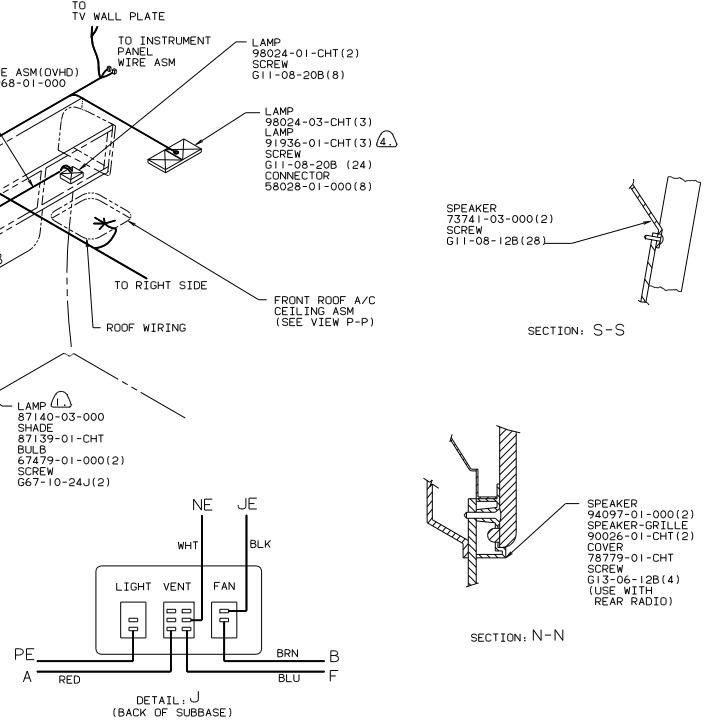
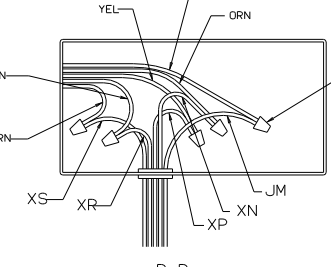
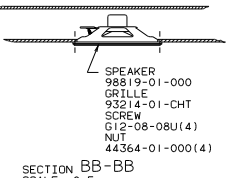
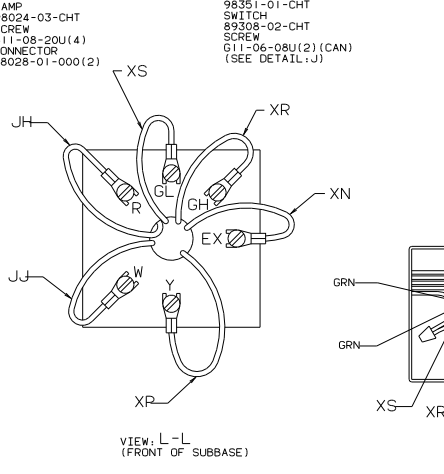
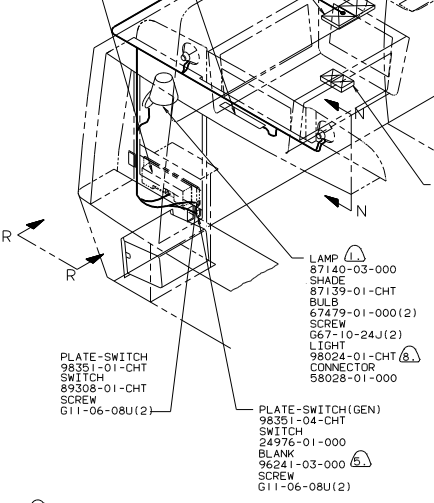
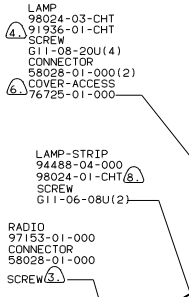
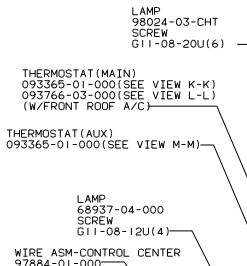
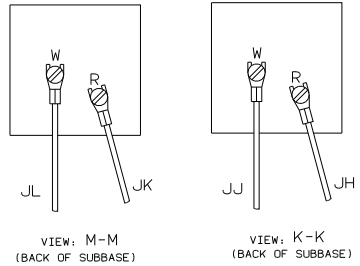
DETAIL: H



- 4 USE WITH MICROWAVE EXCHANGE.
- 3 SUPPLIED WITH CONTROL CENTER.
- 2 ALL GROUND WIRES TO BE COVERED WITH TUBING 8041-02-000.
- 1 FASTEN ALL WIRES TO SUPPORT. USE ONE SCREW AND CLAMP PER WIRE.

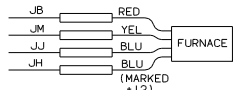
CONTROL CENTER (CAN) 90 W/ICP37RO

TITLE	WIRING INSTL-BODY
30 NET SCALE DRAWING	FILE NO
SHEET 7	OF 11
	97883

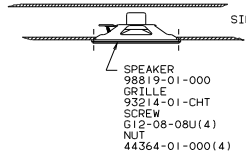
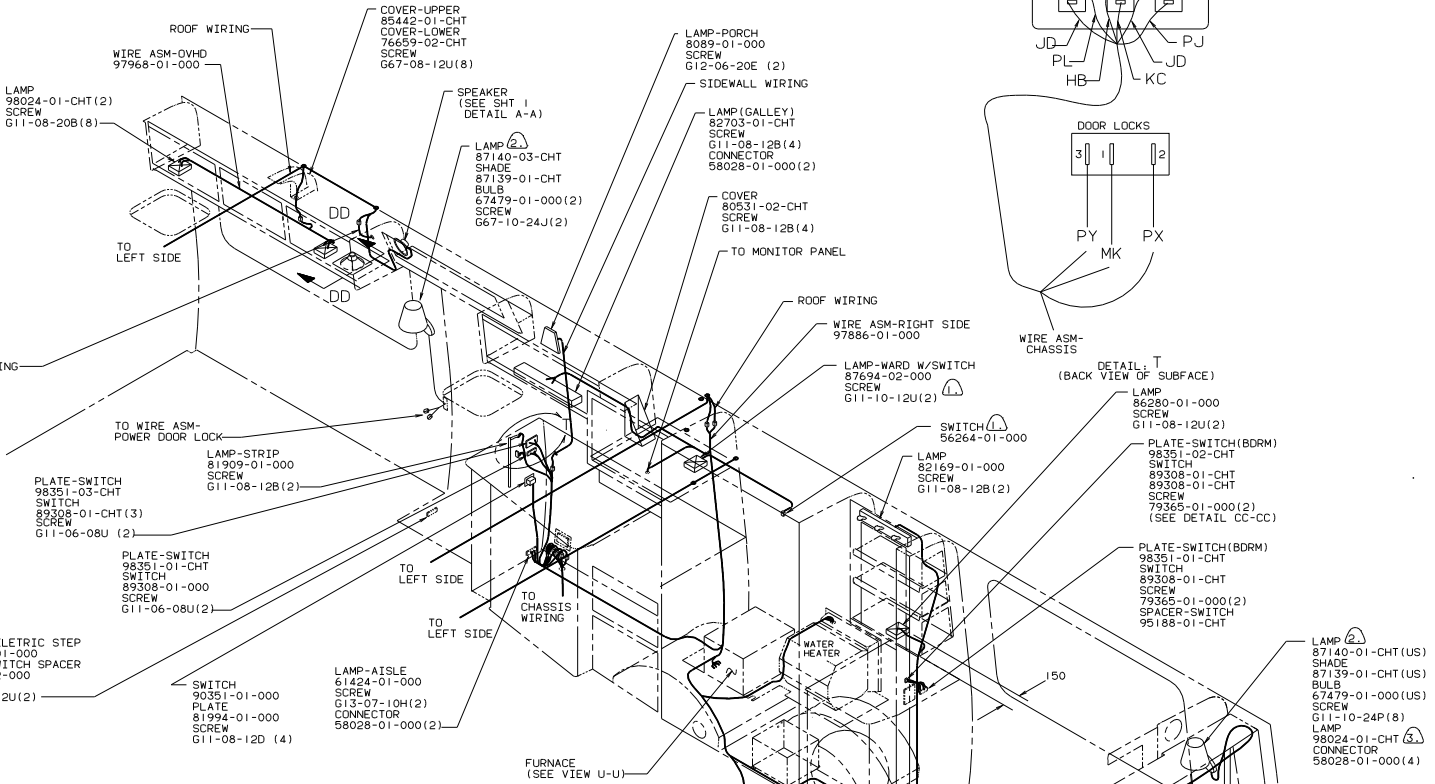


- Ⓐ CANADIAN UNITS ONLY.
- Ⓐ USE WITHOUT ISLAND OVHD CABT OPTION.
- Ⓐ USE WITH ISLAND OVHD CABT OPTION.
- Ⓐ USE WITHOUT GENERATOR.
- Ⓐ USE WITH FLUORESCENT LIGHTING EXCHANGE.
- Ⓐ SUPPLIED WITH RADIO.
- Ⓐ WITH POWER VENT ON U.S. UNITS ONLY.
- Ⓐ USE ON U.S. UNITS ONLY.

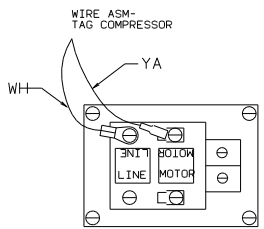




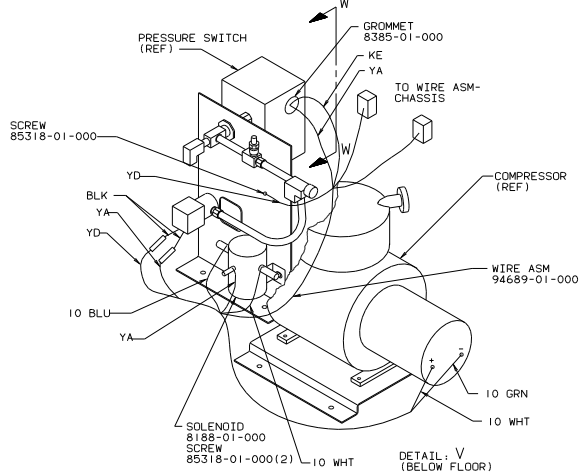
VIEW: U-U



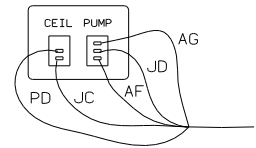
SECTION DD-DD  
SCALE: 0.5



VIEW: W-W  
(BACK VIEW  
W/COVER  
REMOVED)



DETAIL: V  
(BELOW FLOOR)

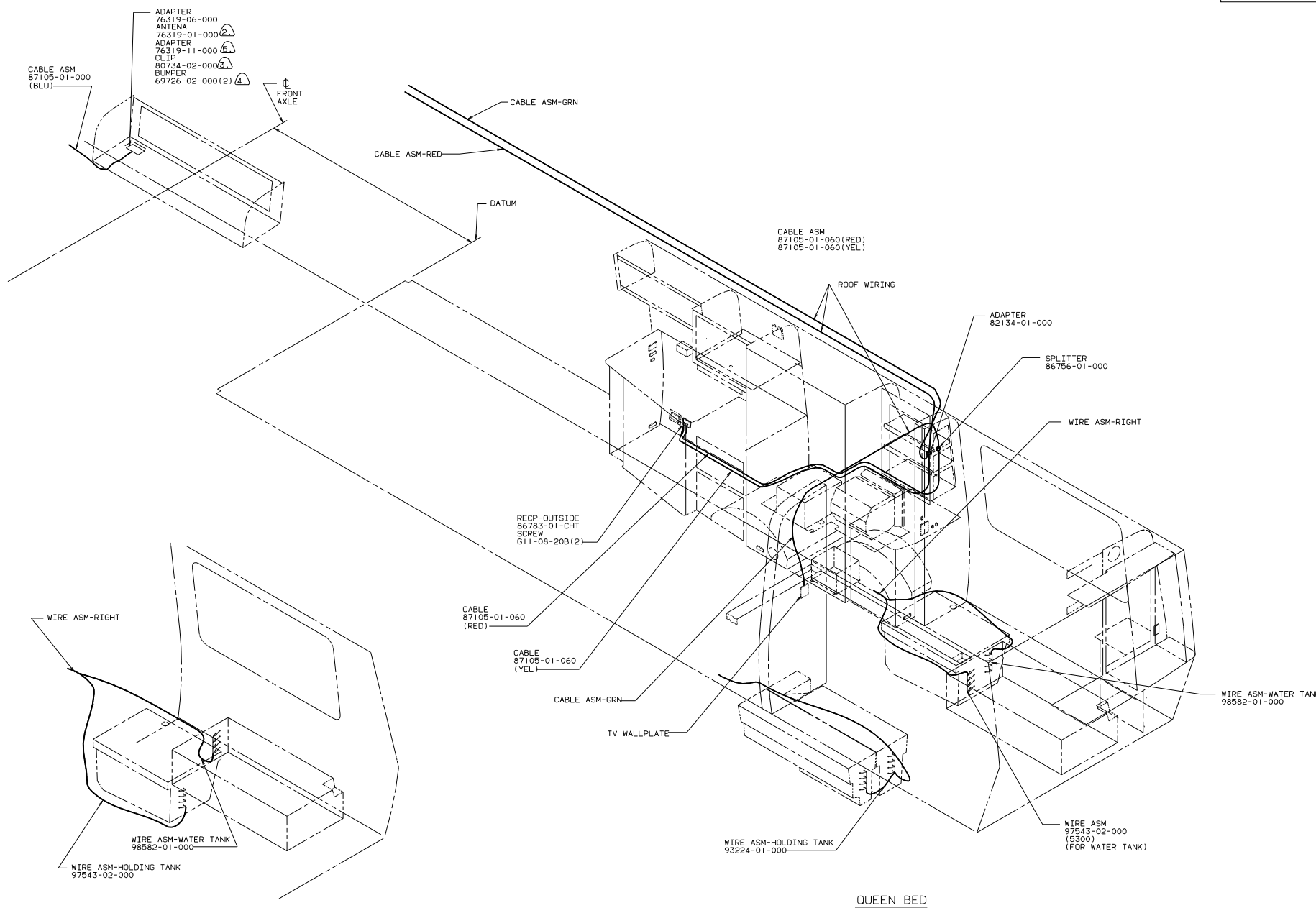


DETAIL: CC-CC

- ③ CANADIAN UNITS ONLY.
- ② USE ON U.S. UNITS ONLY.
- ① MOUNT SWITCH 300MM FROM HINGE SIDE OF DOOR.

TITLE: WIRING INSTL-BODY	
30 MET SCALE DRAWING	FILE NO
SHEET 9 OF 11	97883

12V (US/CAN)  
90 W/ICP37RQ



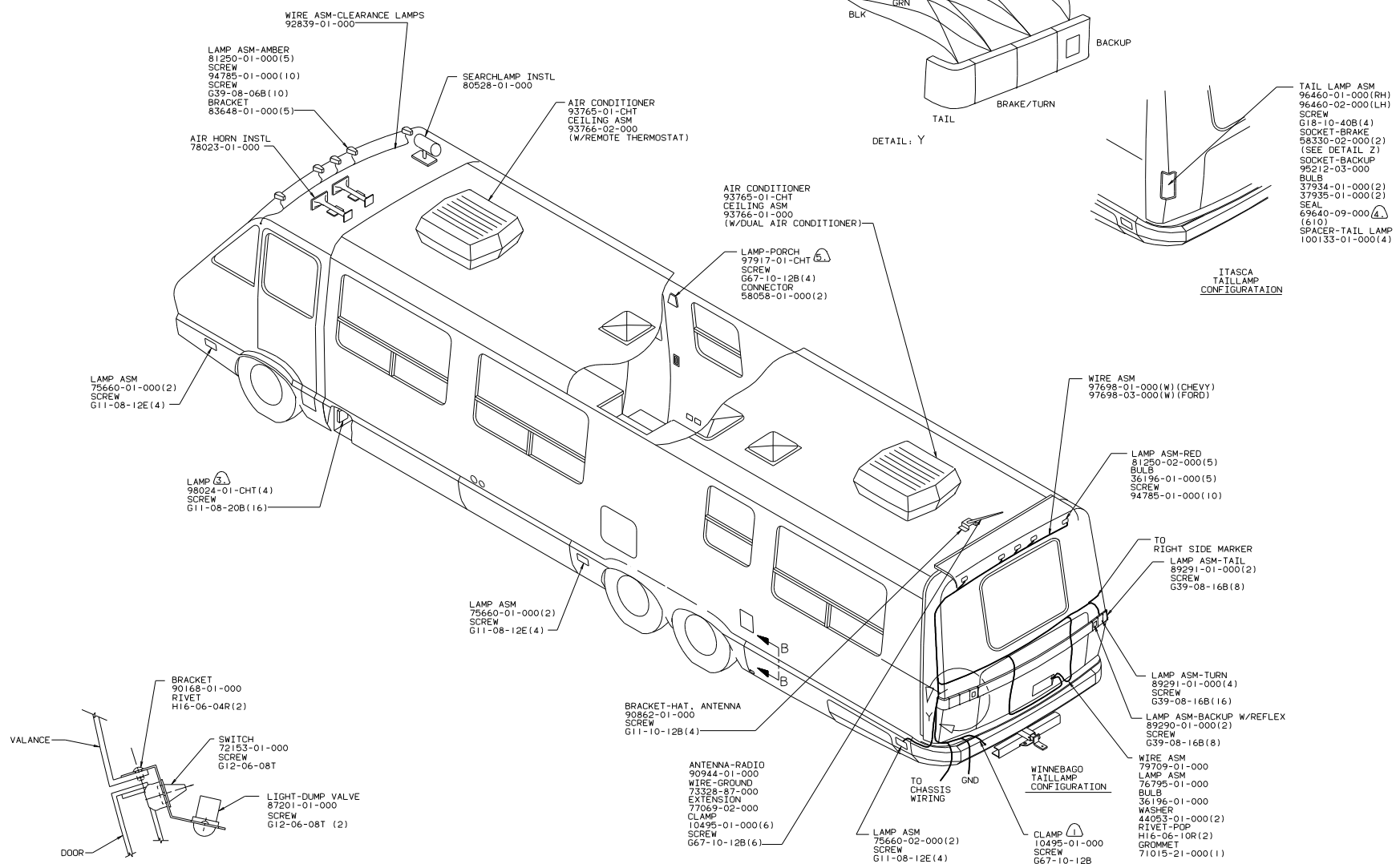
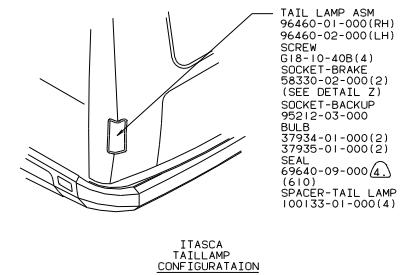
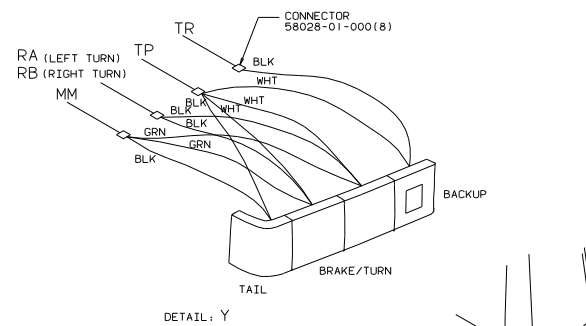
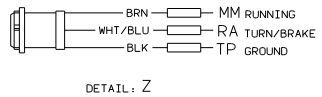
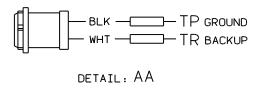
- ① ADAPTER-COAXIAL SUPPLIED LOOSE IN VEHICLE.  
 ② ADD RUBBER TO ROOF UNDER EACH END OF ANTENNA TO PREVENT CONTACT WITH ROOF.  
 ③ LOCATE TO RETAIN CABLE BUT NOT TO RESTRICT TRAVEL OF ANTENNA.  
 ④ SEE DRAWING 76319-01-000 FOR INSTALLATION OF TV ANTENNA.  
 ⑤ WIRE ROUTED IN FLOOR.

TWIN BED

QUEEN BED

COAX CABLE/  
 WATER TANK CONECTIONS  
 90 W/ICP37RQ

TITLE: WIRING INSTL-BODY	
30 NET SCALE DRAWING	FILE NO 97883
SHEET 10 OF 11	1 E



- VIEW: X-X
- ⑤ SEAL WITH SEALER RIBBON.
  - ④ TO BE APPLIED TO GLASS SIDE OF REAR CAP AFTER TAILLIGHT IS INSTALLED. (ITASCA ONLY)
  - ③ USE WITH WINNEBAGO.
  - ② SECURE WITH ADHESIVE 77029-01-000.
  - ① WIRE ASM-TRAILER LIGHTS 91300-02-000 TO BE SUPPLIED LOOSE IN COACH WITH TRAILER TOW PACKAGE.

EXTERIOR LIGHTING/  
COMPARTMENT LAMPS  
90 W/ICP37RO

TITLE	WIRING INSTL-BODY
30 NET SCALE DRAWING	FILE
SHEET 11 OF 11	1 E
	97883