

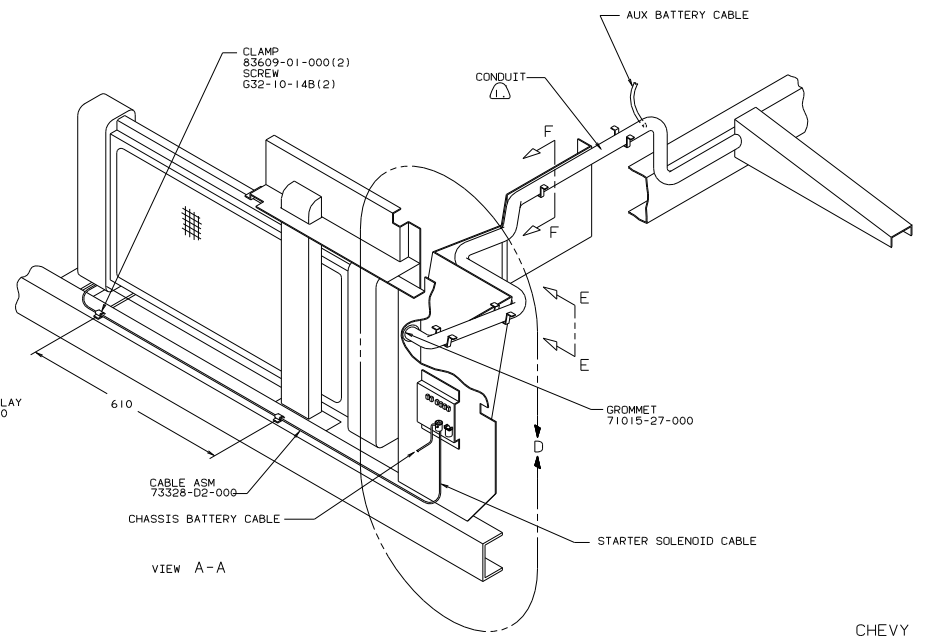
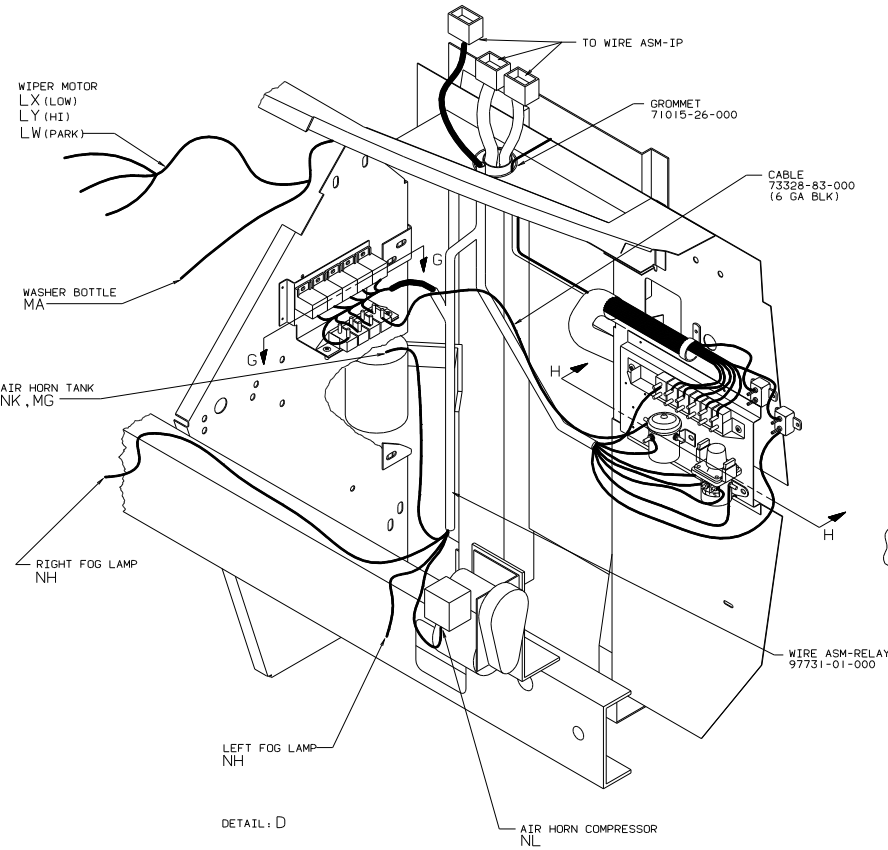
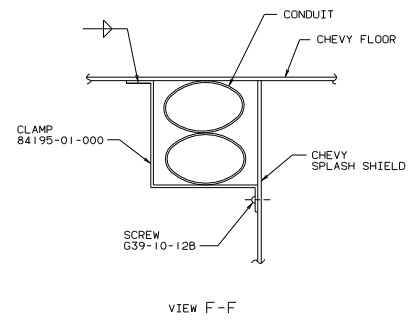
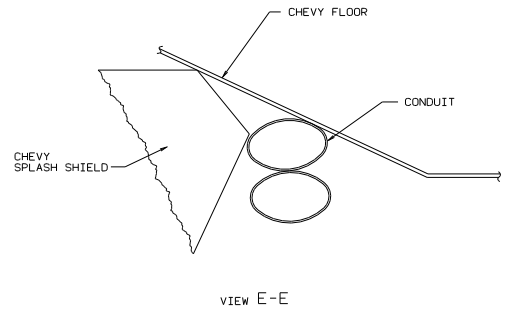
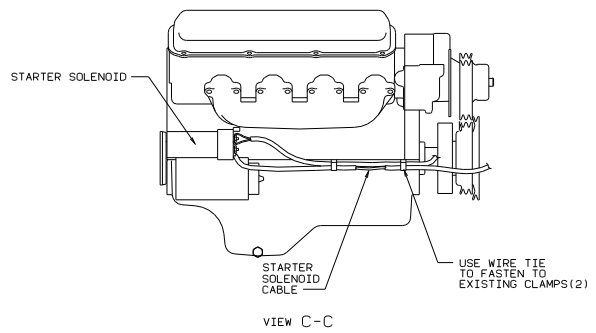
- ⑧ CLAMP 83610-01-000(12), SCREW G39-08-08B(12).
- ⑦ CLAMP 10497-02-000(8), SCREW G39-08-08B(8).
- ⑥ CLAMP 10497-06-000(4), SCREW G39-08-08B(4).
- ⑤ CLAMP 83609-01-000(2), SCREW G39-08-08B(2).

- ④ INCLUDE GM BRAKE LAMP WIRE HARNESS WITH WIRE ASM-CHASSIS HERE TO FRONT.
- ③ COVER WITH CONDUIT-41953-10-000 & 41953-11-000 AS REQUIRED.

9. ON FORD CHASSIS, DISCONNECT EXISTING FORD CHASSIS WIRE ASM (NEAR TRANSMISSION) AND INSERT EXTENSION 98978-01-000.

1. LEGEND: — WINNEBAGO WIRING, - - - CABLE.

		90 W/ICP32RD
QTY TO CHAS P/E M/E W/E DIMS LIMIT	UNDESIGNED TOLERANCES ARE: WHILE SHIP 101 : 3 ONE-PIECE 10, 21 : TWO-PIECE 10, 20, 31 : SINGLE : THIRD-PIECE : PROTECTION :	MATERIAL: 1 2 3 4 5 6 7 8 9 10 11 12 13 14 15 16 17 18 19 20 21 22 23 24 25 26 27 28 29 30 31 32 33 34 35 36 37 38 39 40 41 42 43 44 45 46 47 48 49 50 51 52 53 54 55 56 57 58 59 60 61 62 63 64 65 66 67 68 69 70 71 72 73 74 75 76 77 78 79 80 81 82 83 84 85 86 87 88 89 90 91 92 93 94 95 96 97 98 99 100
TITLE: WIRING INSTL-CHASSIS		SHEET 1 OF 4
DATE: 04 # SCALE: 8:1 ALL DIMENSIONS ARE IN MILLIMETERS		REF: 94183 97727

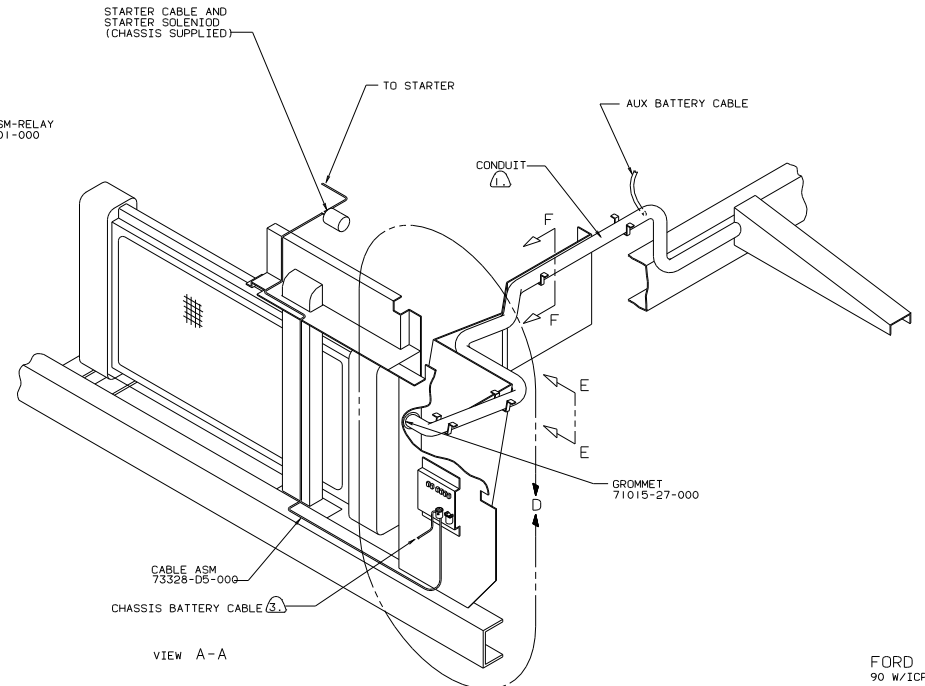
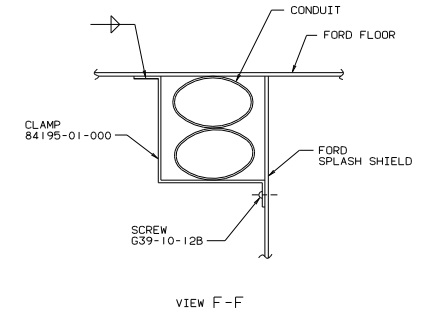
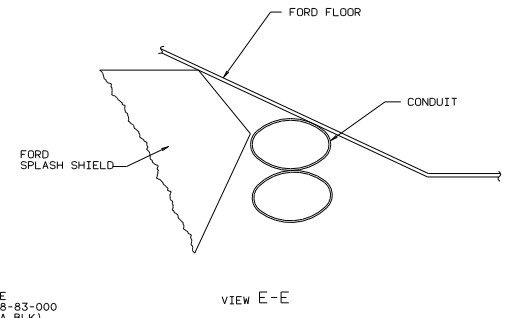
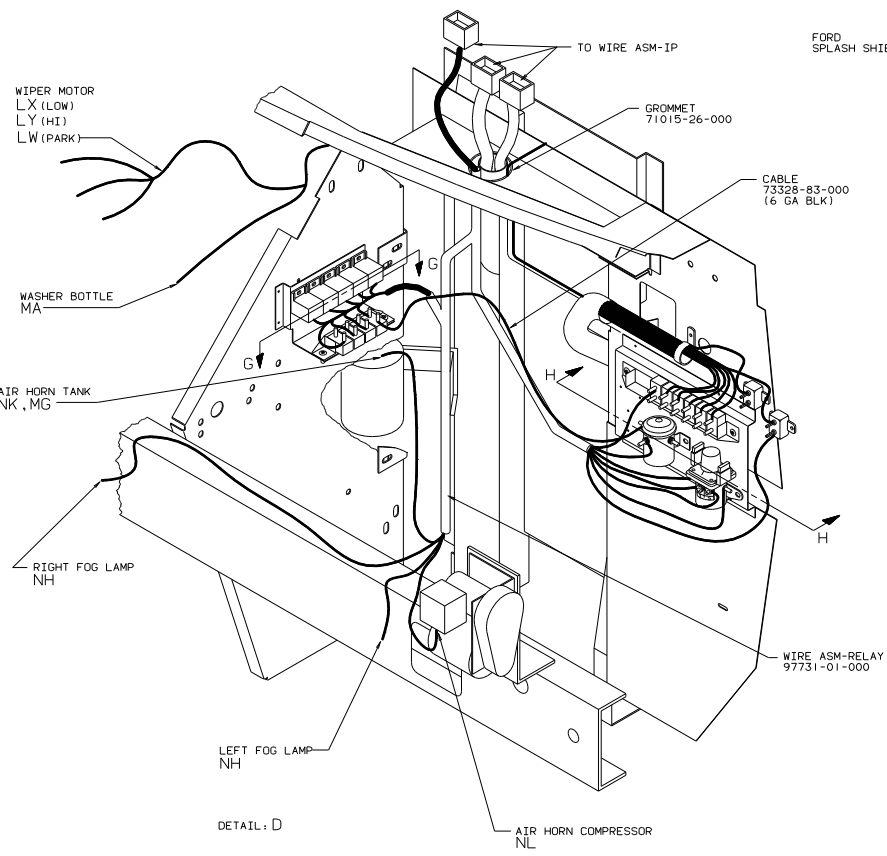


COVER WITH CONDUIT-41953-10-000 OR 41953-11-000 AS REQUIRED.

NOTES:

CHEVY
90 W/ICP32RQ

TITLE: WIRING INSTL-CHASSIS	
30 NET SCALE Drawing	REV 1.0
SHEET 2 of 4	DATE 97727



COVER WITH CONDUIT-41953-10-000 & 41953-11-000 AS REQUIRED.

NOTES:

FORD 90 W/ICP32RD

TITLE: WIRING INSTL-CHASSIS	
DO NOT SCALE DRAWING	FILE NO: 97727
SHEET 3 OF 4	1 E

