

- ⑬ USE WITH REFRIGERATOR WITH ICE MAKER ONLY.
- ⑫ USE WITHOUT AIR ROOF CONDITIONER.
- ⑪ ADD 13 DIA DRAIN HOLE IN BOTTOM CENTER NEAR SIDE AWAY FROM SIDEWALL.
- ⑩ ATTACH 8 GREEN TO REFRIGERATOR BONDING TERMINAL LOCATED BENEATH GAS MANIFOLD WITH NUT D24-10-00B.
- ⑨ LOCATE RECEPTACLE 350 ABOVE SHELF.
- ⑧ USE WITH TWO ROOF AIR CONDITIONERS.
- ⑦ WIRE ROUTED IN FLOOR.
- ⑥ INSTALL RECEPTACLE WITH GROUND TOWARD OUTBOARD SIDE OF VEHICLE.
- ⑤ SEAL WITH BEDDING COMPOUND 69639-01-000.
- ④ USE WITH GENERATOR ONLY.

- 3. ALL GROUND WIRES TO BE COVERED WITH TUBING 8041-02-000.
- 2. ALL 110 V WIRES ARE TO BE CLAMPED WITH CLAMP 10497-05-000 WITHIN 200 OF OUTLET BOXES. USE SCREW G67-10-12B.
- 1. ALL WIRES TO BE CLAMPED WITH CLAMP 10495-01-000 OR CLIP 80734-01-000 EVERY 1220. USE SCREW G67-10-12B UNLESS OTHERWISE SPECIFIED.

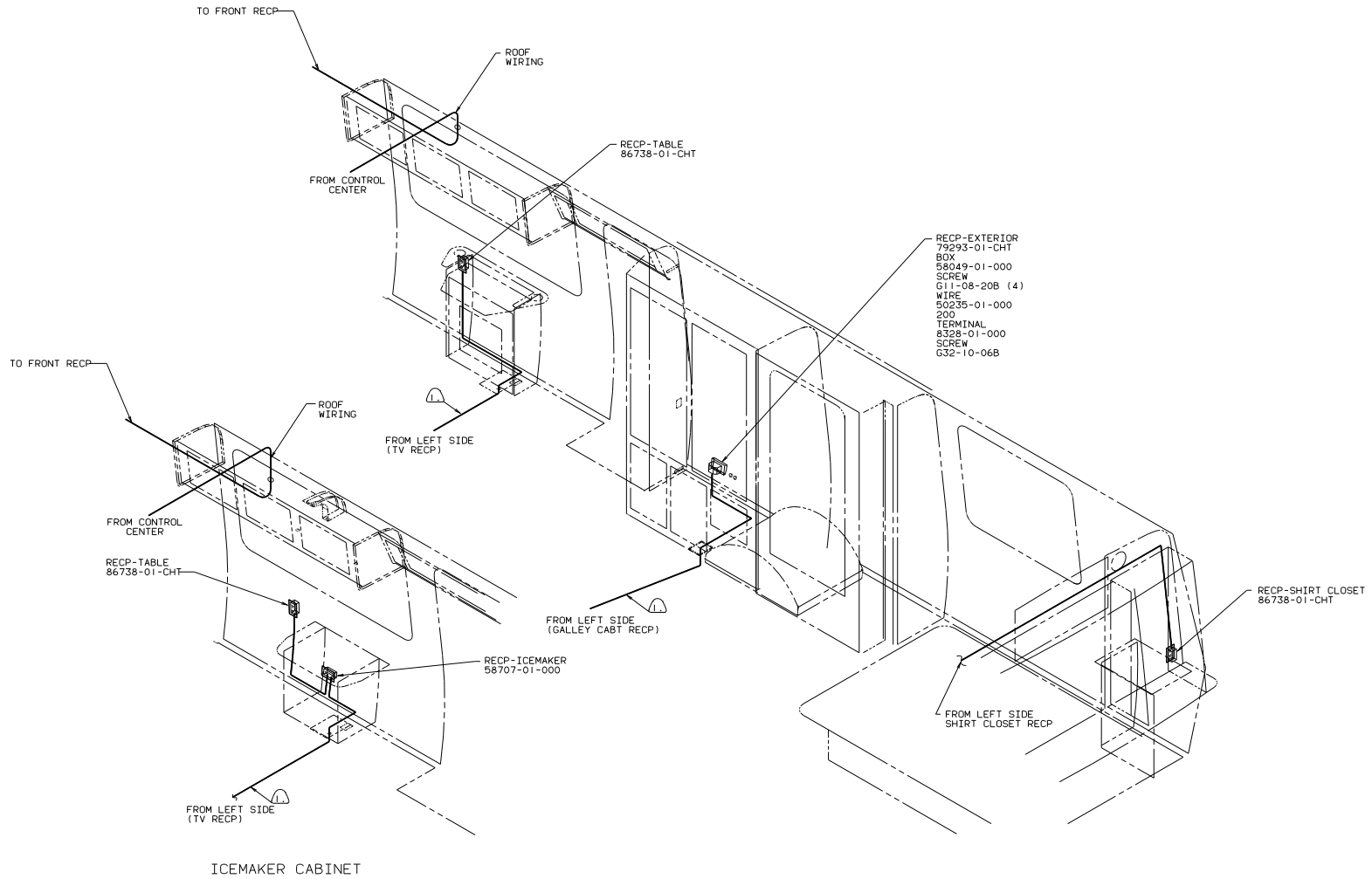
NOTES:

110V (US)

WINNERAGO 90 W/1CP32R0

| | | |
|-----|-----------------------------|----------|
| QTY | UNSPECIFIED TOLERANCES ARE: | MATERIAL |
| DRP | WHOLE DIM (X) | |
| FPE | ONE-PLACE (X.X) | |
| FLE | TWO-PLACE (X.XXX) | |
| CON | THIRD ANGLE PROJECTION | |

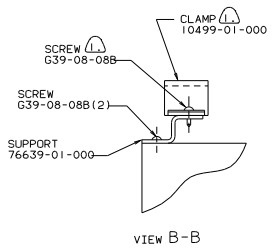
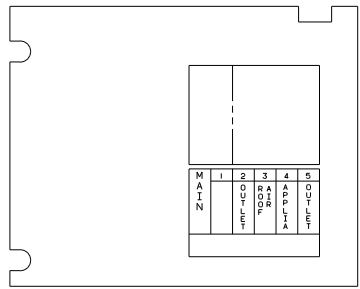
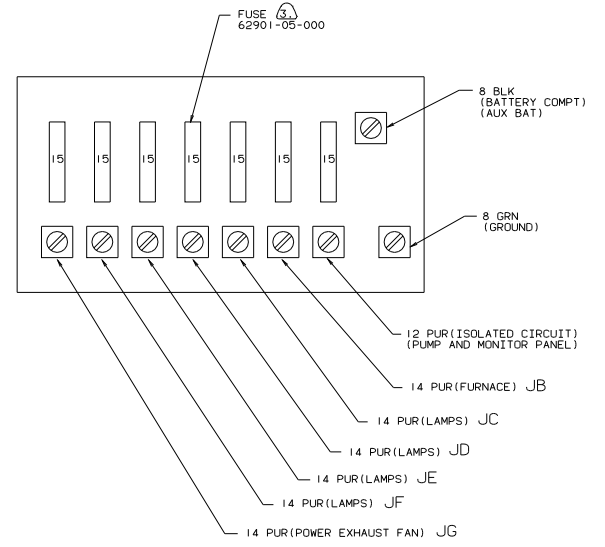
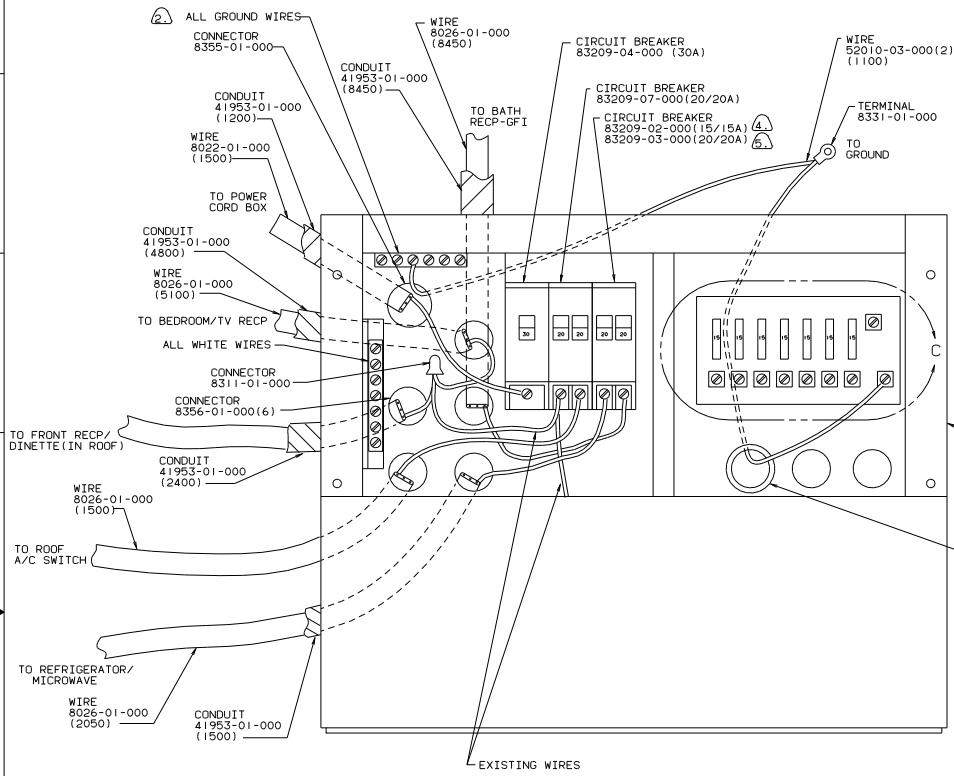
LAND P32R00 TITLE: WIRING INSTL-BODY
 DIA # SCALE: NONE DO NOT SCALE DRAWING FILE: 097
 ALL DIMENSIONS ARE IN MILLIMETERS SHEET 1 OF 12 ENG: 97726



NOTES:
 ① WIRE ROUTED IN FLOOR.

110V (US)
 90 W/ICP32RQ

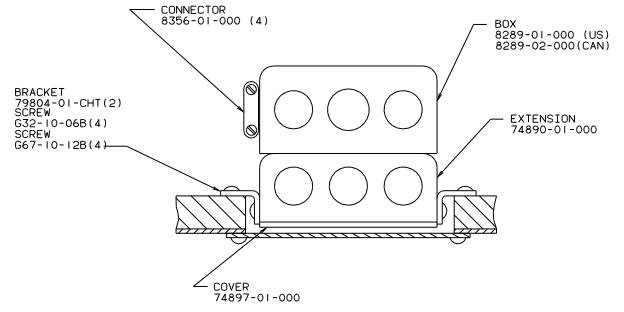
| | | | |
|--------------------------|---------------|------|-------|
| TITLE: WIRING INSTL-BODY | | DATE | REV |
| 30 NET SCALE DRAWING | SHEET 2 of 12 | 1.1 | 1 |
| | | | 97726 |



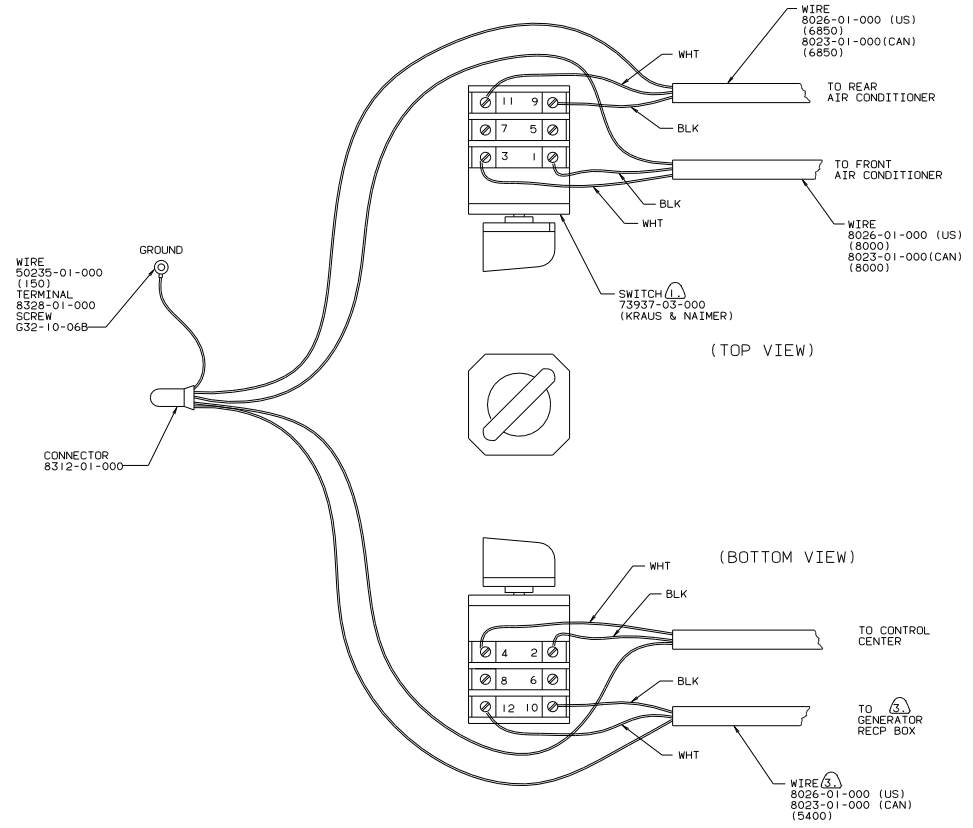
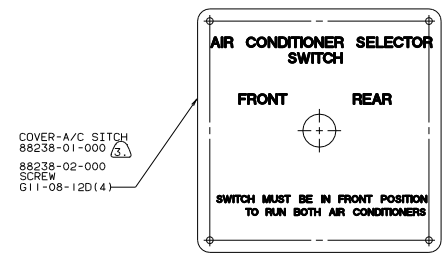
- NOTES:
- ② USE WITH MICROWAVE.
 - ④ USE WITHOUT MICROWAVE.
 - ③ SUPPLIED WITH CONTROL CENTER.
 - ② ALL GROUND WIRES TO BE COVERED WITH TUBING 8041-02-000.
 - ① FASTEN ALL WIRES TO SUPPORT. USE ONE SCREW AND CLAMP PER WIRE.

CONTROL CENTER (US)
90 W/ICP32RQ

| | |
|----------------------|-------------------|
| TITLE | WIRING INSTL-BODY |
| 30 MET SCALE DRAWING | FILE NO |
| SHEET 3 OF 12 | 97726 |



TOP VIEW OF BOX

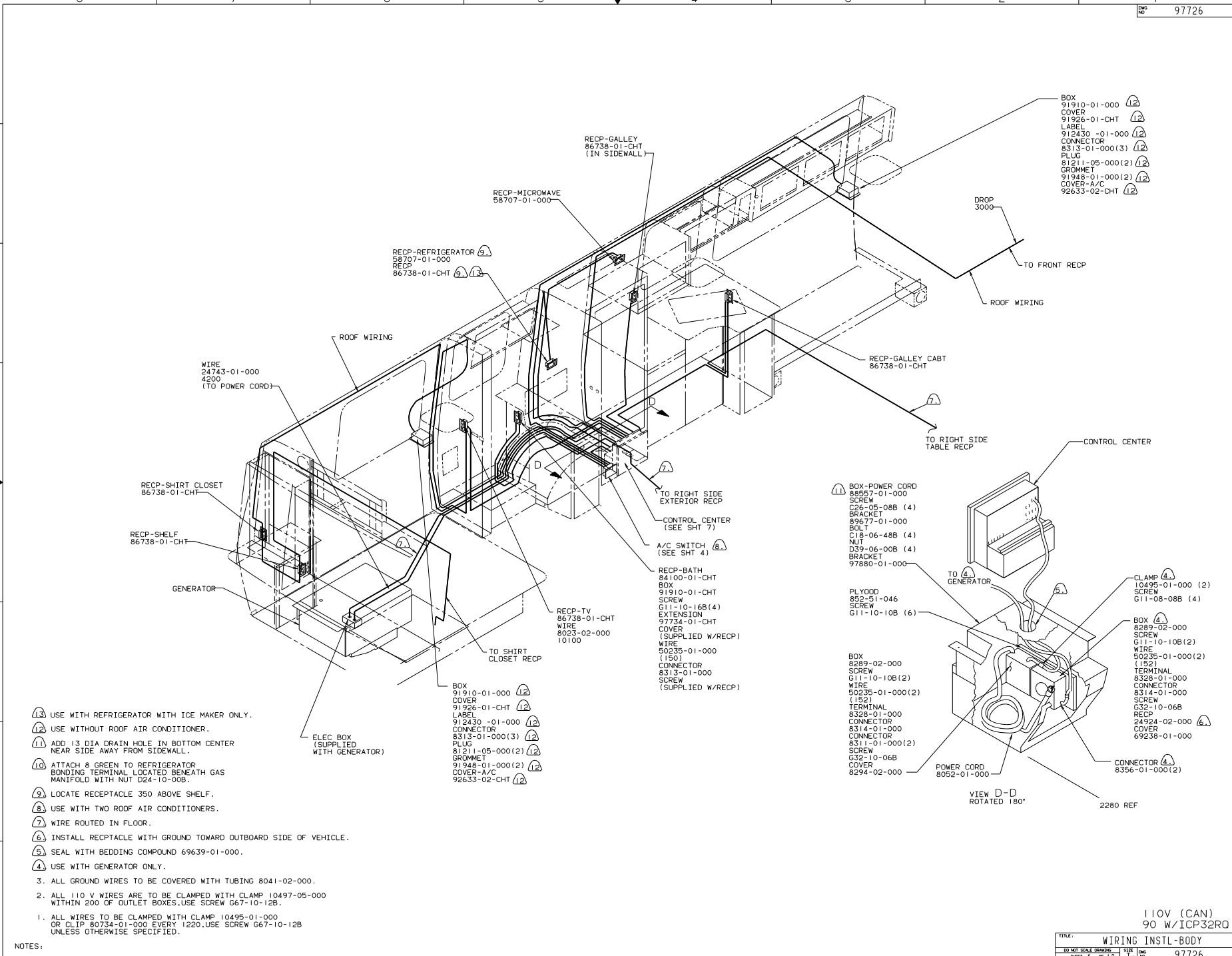


(TOP VIEW)

(BOTTOM VIEW)

- ③ USE WITH 6500 WATT GENERATOR OF LARGER.
- 2. ALL GROUND WIRES TO BE COVERED WITH TUBING 8041-02-000.
- ① FASTEN SWITCH TO COVER 74897-01-000 BEFORE FASTENING COVER TO BOX.

| | |
|--------------------------|---------------|
| TITLE: WIRING INSTL-BODY | |
| 30 NET SCALE DRAWING | FILE NO 97726 |
| SHEET 4 OF 12 | 1 E |



- 13 USE WITH REFRIGERATOR WITH ICE MAKER ONLY.
- 12 USE WITHOUT ROOF AIR CONDITIONER.
- 11 ADD 13 DIA DRAIN HOLE IN BOTTOM CENTER NEAR SIDE AWAY FROM SIDEWALL.
- 10 ATTACH 8 GREEN TO REFRIGERATOR BONDING TERMINAL LOCATED BENEATH GAS MANIFOLD WITH NUT D24-10-008.
- 9 LOCATE RECEPTACLE 350 ABOVE SHELF.
- 8 USE WITH TWO ROOF AIR CONDITIONERS.
- 7 WIRE ROUTED IN FLOOR.
- 6 INSTALL RECPTACLE WITH GROUND TOWARD OUTBOARD SIDE OF VEHICLE.
- 5 SEAL WITH BEDDING COMPOUND 69639-01-000.
- 4 USE WITH GENERATOR ONLY.

- 3. ALL GROUND WIRES TO BE COVERED WITH TUBING 8041-02-000.
- 2. ALL 110 V WIRES ARE TO BE CLAMPED WITH CLAMP 10497-05-000 WITHIN 200 OF OUTLET BOXES. USE SCREW G67-10-128.
- 1. ALL WIRES TO BE CLAMPED WITH CLAMP 10495-01-000 OR CLIP 80734-01-000 EVERY 1220. USE SCREW G67-10-128 UNLESS OTHERWISE SPECIFIED.

NOTES:

- BOX 91910-01-000 (12)
- COVER 91926-01-CHT (12)
- LABEL 912430 -01-000 (12)
- CONNECTOR 8313-01-000(3) (12)
- PLUG 81211-05-000(2) (12)
- GROMMET 91948-01-000(2) (12)
- COVER-A/C 92633-02-CHT (12)

- RECP-BATH 84100-01-CHT
- BOX 91910-01-CHT
- SCREW G11-10-16B(4)
- EXTENSION 97734-01-CHT
- COVER (SUPPLIED W/RECP)
- WIRE 50235-01-000 (150)
- CONNECTOR 8313-01-000
- SCREW (SUPPLIED W/RECP)

- BOX-POWER CORD 88557-01-000
- SCREW C26-05-08B (4)
- BRACKET 89677-01-000
- BOLT C18-06-48B (4)
- NUT D39-06-00B (4)
- BRACKET 97880-01-000

- BOX 8289-02-000
- SCREW G11-10-10B(2)
- WIRE 50235-01-000(2) (152)
- TERMINAL 8328-01-000
- CONNECTOR 8314-01-000
- CONNECTOR 8311-01-000(2)
- SCREW G32-10-06B
- COVER 8294-02-000

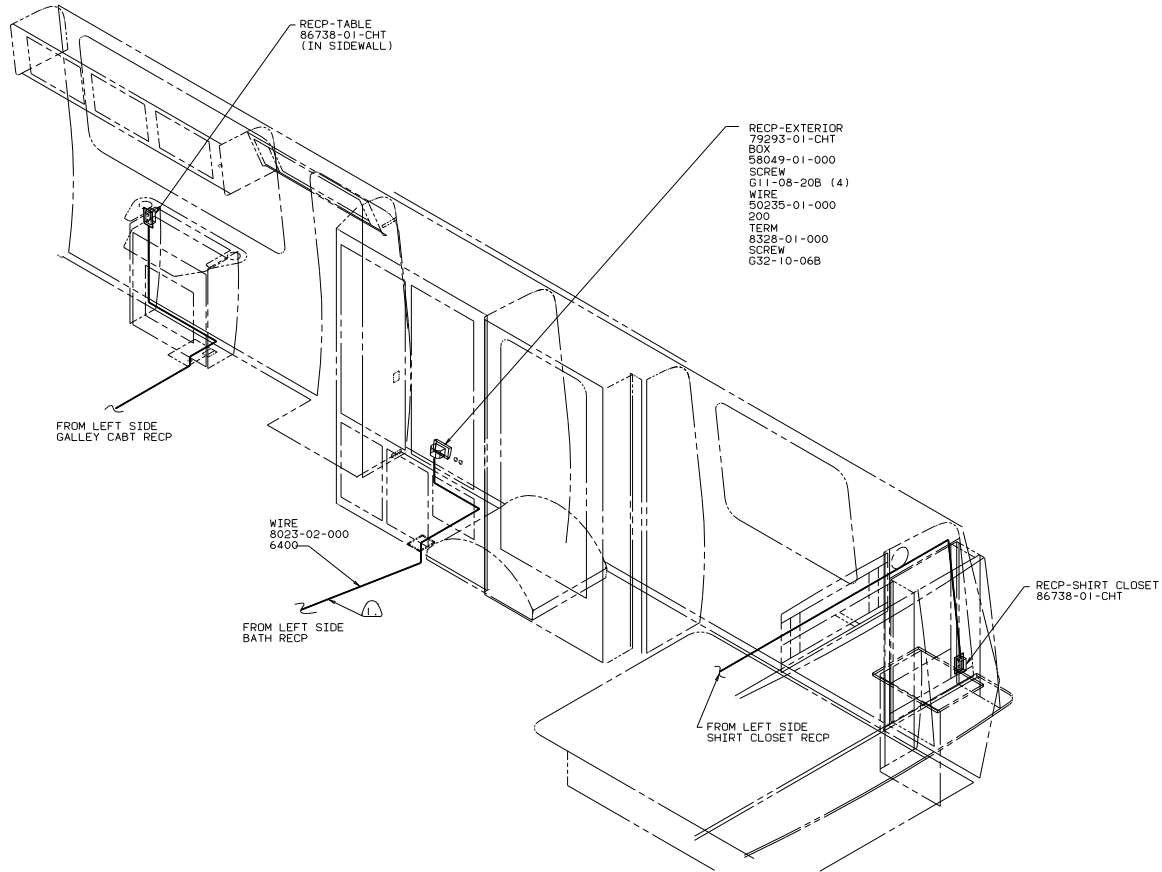
- BOX 91910-01-000 (12)
- COVER 91926-01-CHT (12)
- LABEL 912430 -01-000 (12)
- CONNECTOR 8313-01-000(3) (12)
- PLUG 81211-05-000(2) (12)
- GROMMET 91948-01-000(2) (12)
- COVER-A/C 92633-02-CHT (12)

- CLAMP 10495-01-000 (2)
- SCREW G11-08-08B (4)
- BOX 8289-02-000
- SCREW G11-10-10B(2) (152)
- WIRE 50235-01-000(2)
- TERMINAL 8328-01-000
- CONNECTOR 8314-01-000
- SCREW G32-10-06B
- RECP 24924-02-000
- COVER 69238-01-000
- CONNECTOR 8356-01-000(2)

| | |
|--------------------------|---------------|
| TITLE: WIRING INSTL-BODY | |
| 30 NET SCALE DRAWING | FILE NO 97726 |
| SHEET 5 OF 12 | REV 1 E |

110V (CAN)
90 W/ICP32RD

H
G
F
E
D
C
B
A

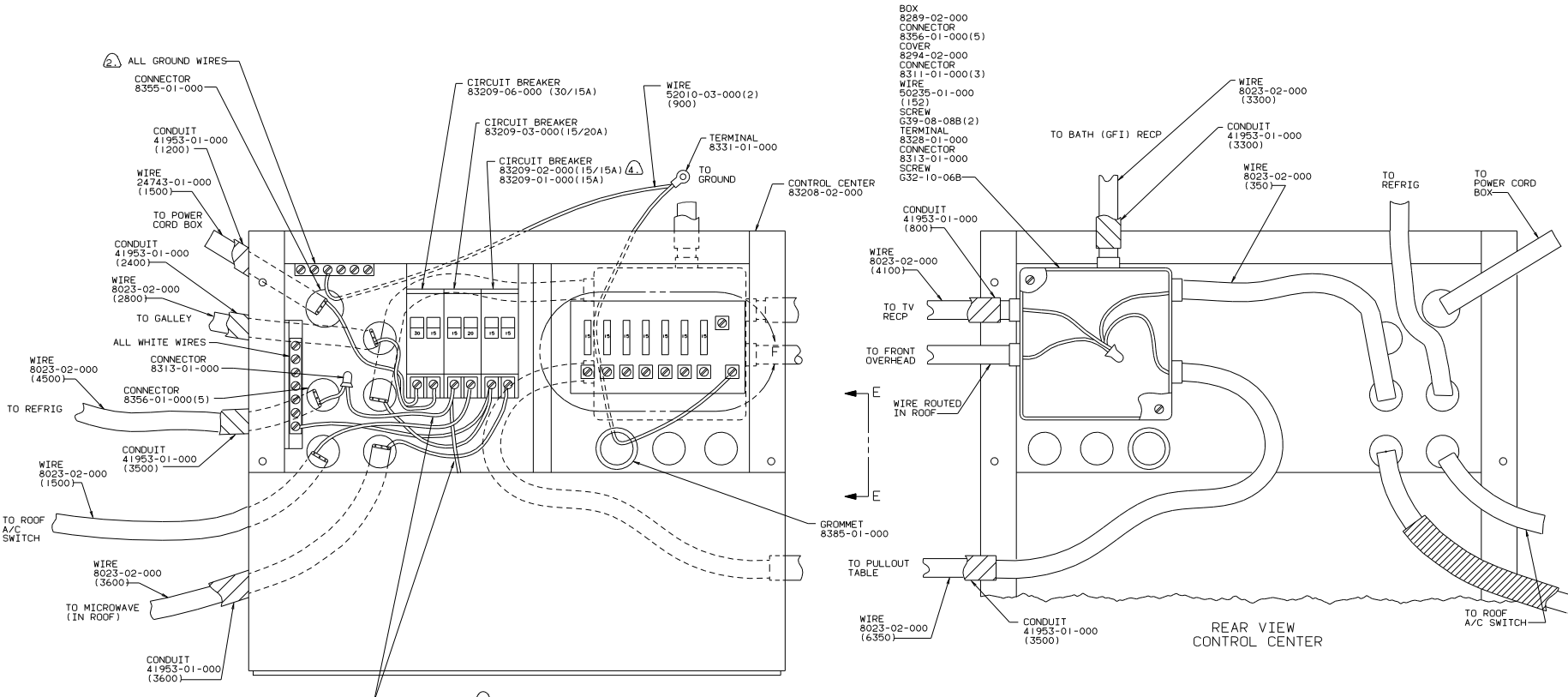


1 WIRE ROUTED IN FLOOR.

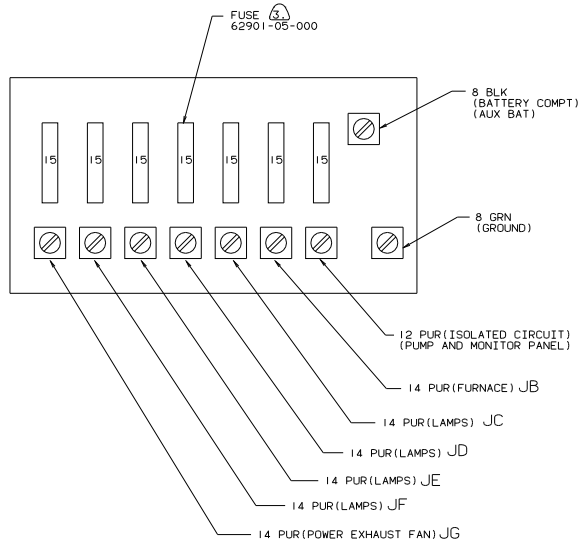
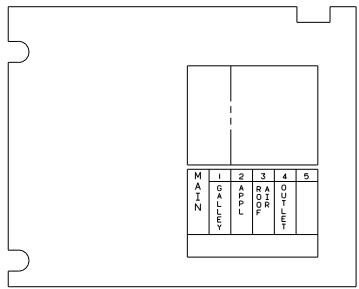
NOTES:

110V (CAN)
90 W/ICP32RQ

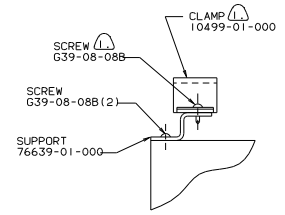
| | |
|--------------------------|---------------|
| TITLE: WIRING INSTL-BODY | |
| 30 NET SCALE DRAWING | FILE NO 97726 |
| SHEET 6 OF 12 | DWG NO 97726 |



REAR VIEW CONTROL CENTER



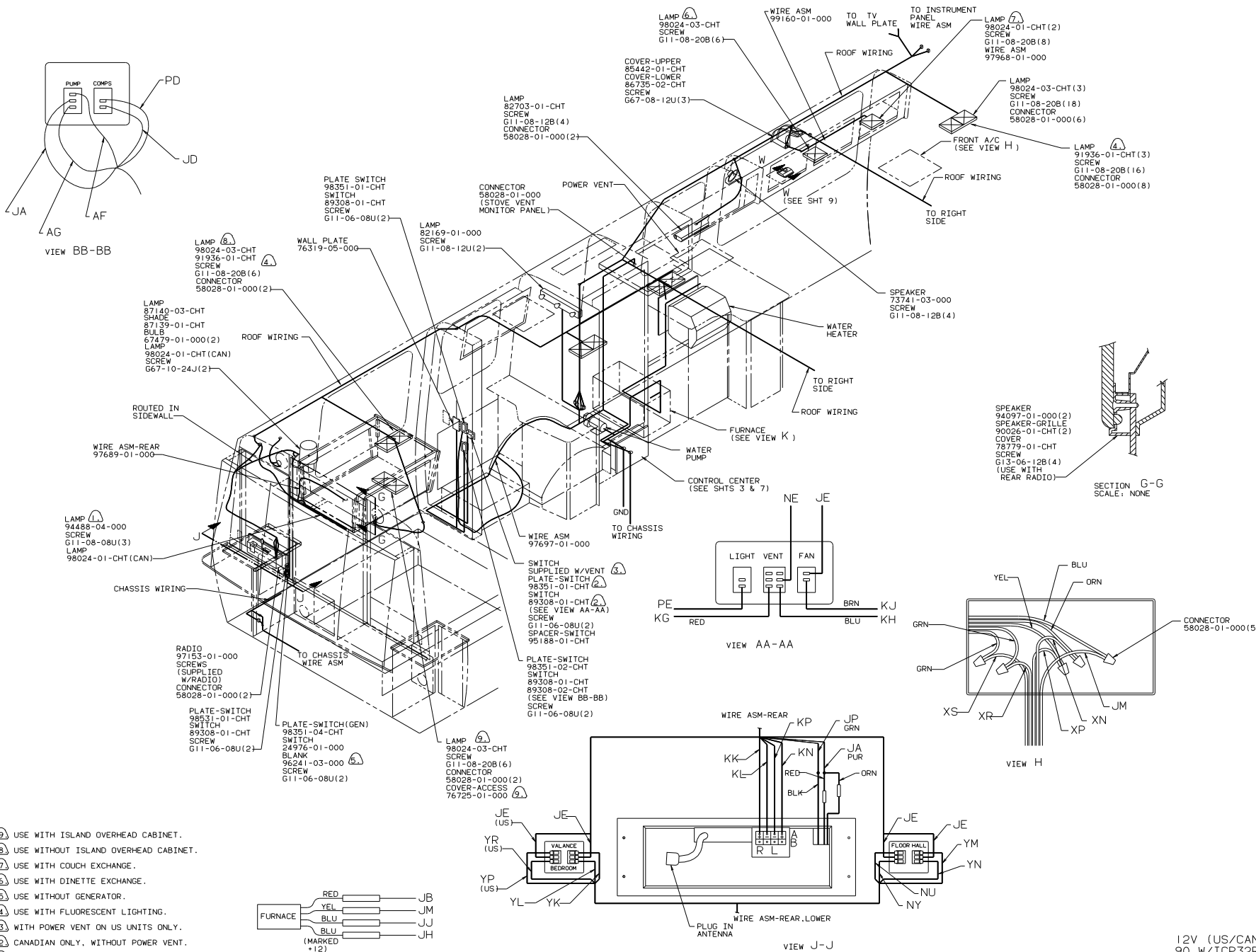
DETAIL F



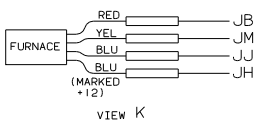
- ⑤ USE WITHOUT MICROWAVE.
- ④ USE WITH MICROWAVE.
- ③ SUPPLIED WITH CONTROL CENTER.
- ② ALL GROUND WIRES TO BE COVERED WITH TUBING 8041-02-000.
- ① FASTEN ALL WIRES TO SUPPORT. USE ONE SCREW AND CLAMP PER WIRE.

CONTROL CENTER (CAN) 90 W/ICP32RQ

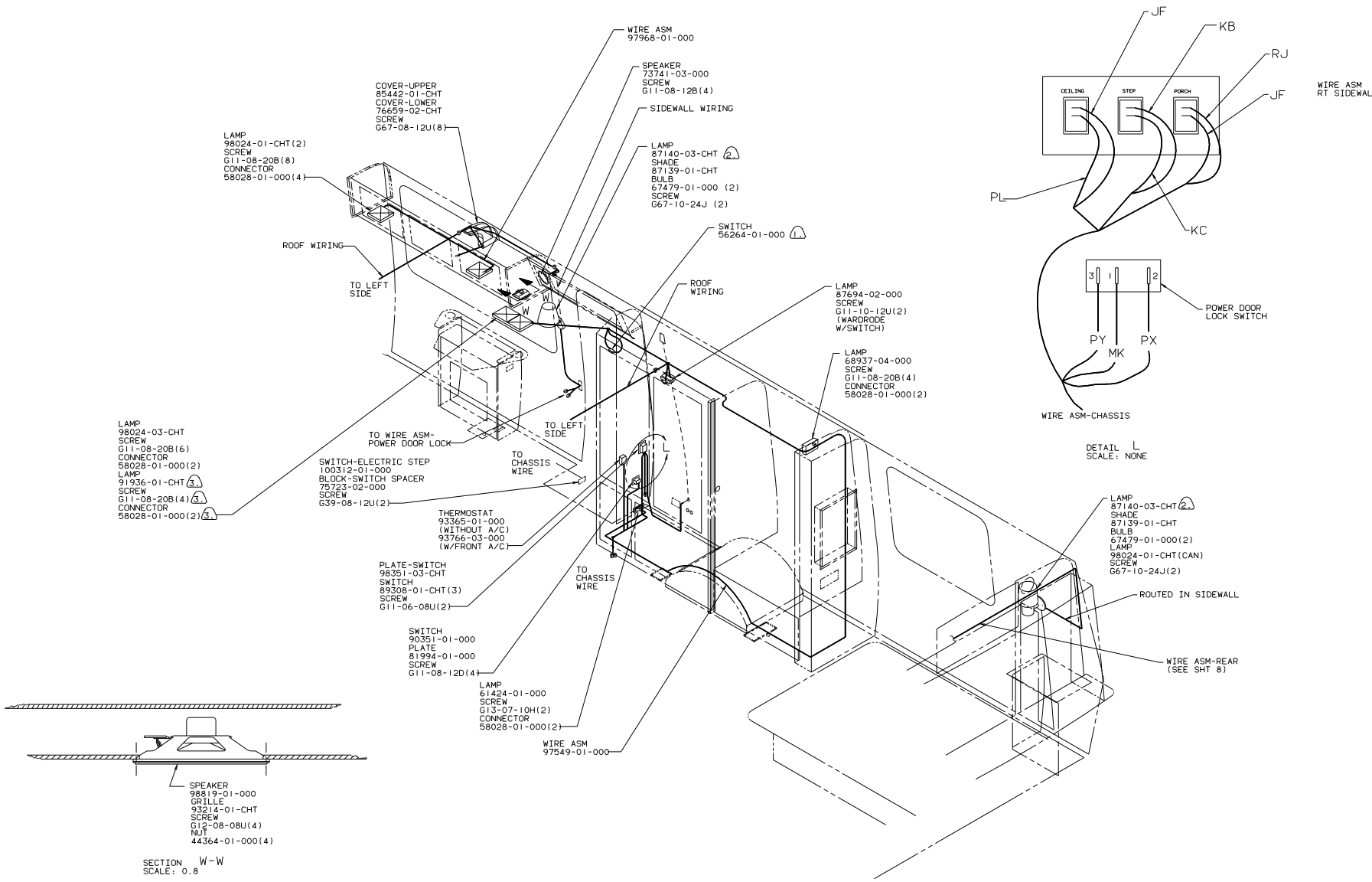
| | |
|----------------------|-------------------|
| TITLE | WIRING INSTL-BODY |
| 30 NET SCALE DRAWING | FILE |
| SHEET 7 | OF 12 |
| DWG NO | 97726 |



- ⑨ USE WITH ISLAND OVERHEAD CABINET.
- ⑧ USE WITHOUT ISLAND OVERHEAD CABINET.
- ⑦ USE WITH COUCH EXCHANGE.
- ⑥ USE WITH DINETTE EXCHANGE.
- ⑤ USE WITHOUT GENERATOR.
- ④ USE WITH FLUORESCENT LIGHTING.
- ③ WITH POWER VENT ON US UNITS ONLY.
- ② CANADIAN ONLY. WITHOUT POWER VENT.
- ① USE ON US UNITS ONLY.

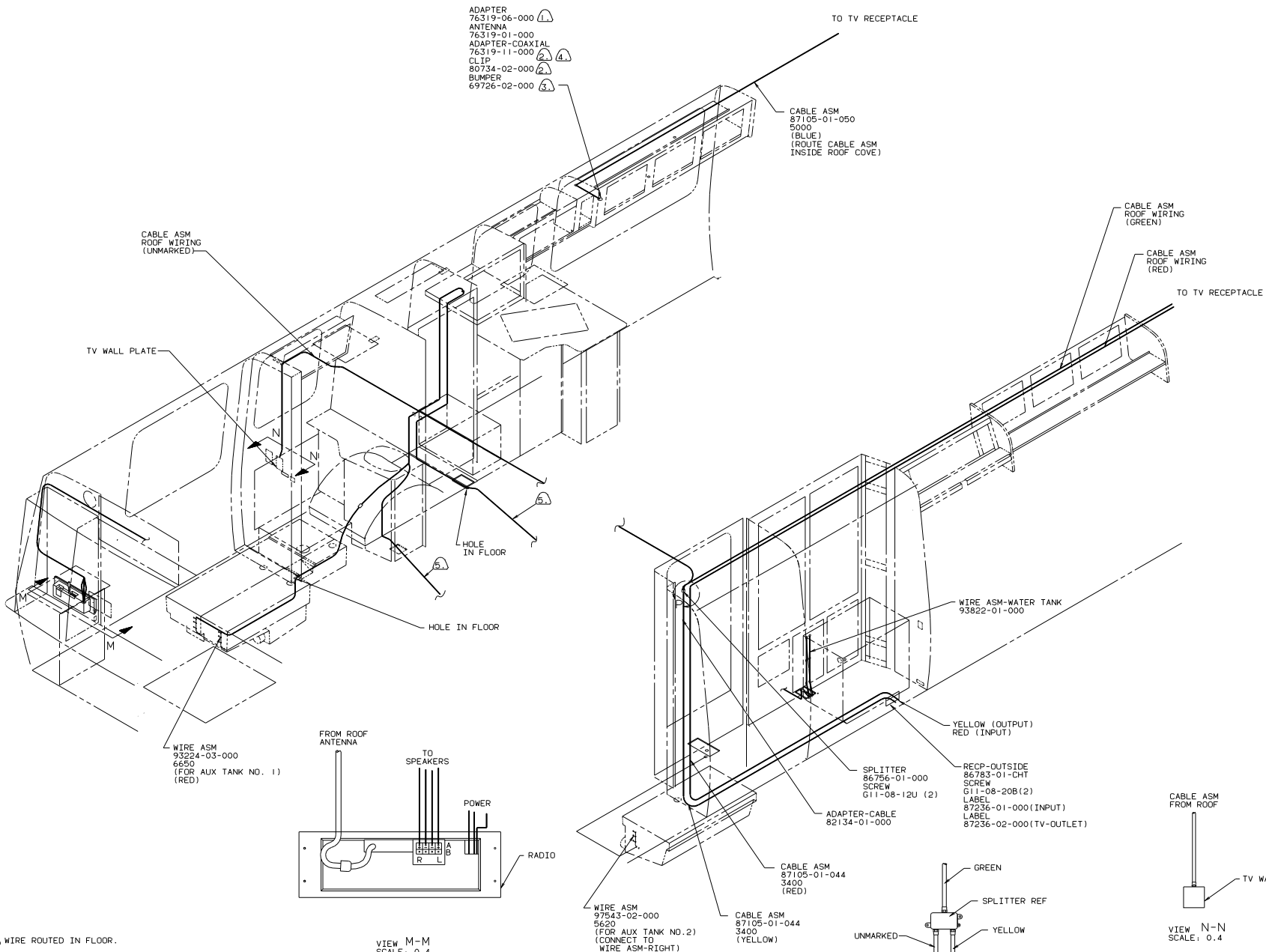


| | |
|--------------------------|--------------|
| TITLE: WIRING INSTL-BODY | |
| 30 NET SCALE DRAWING | REV 1 |
| SHEET 8 OF 12 | ENG NO 97726 |



- NOTES:
- ③ USE WITH FLUORESCENT LIGHTING.
 - ② USE ON U.S. UNITS ONLY.
 - ① MOUNT SWITCH 100 FROM HINGE SIDE OF DOOR.

| | | | |
|--------------------------|---------------|---------------|--|
| TITLE: WIRING INSTL-BODY | | DWG NO: 97726 | |
| 30 NET SCALE DRAWING | SHEET 9 OF 12 | FILE 1E | |



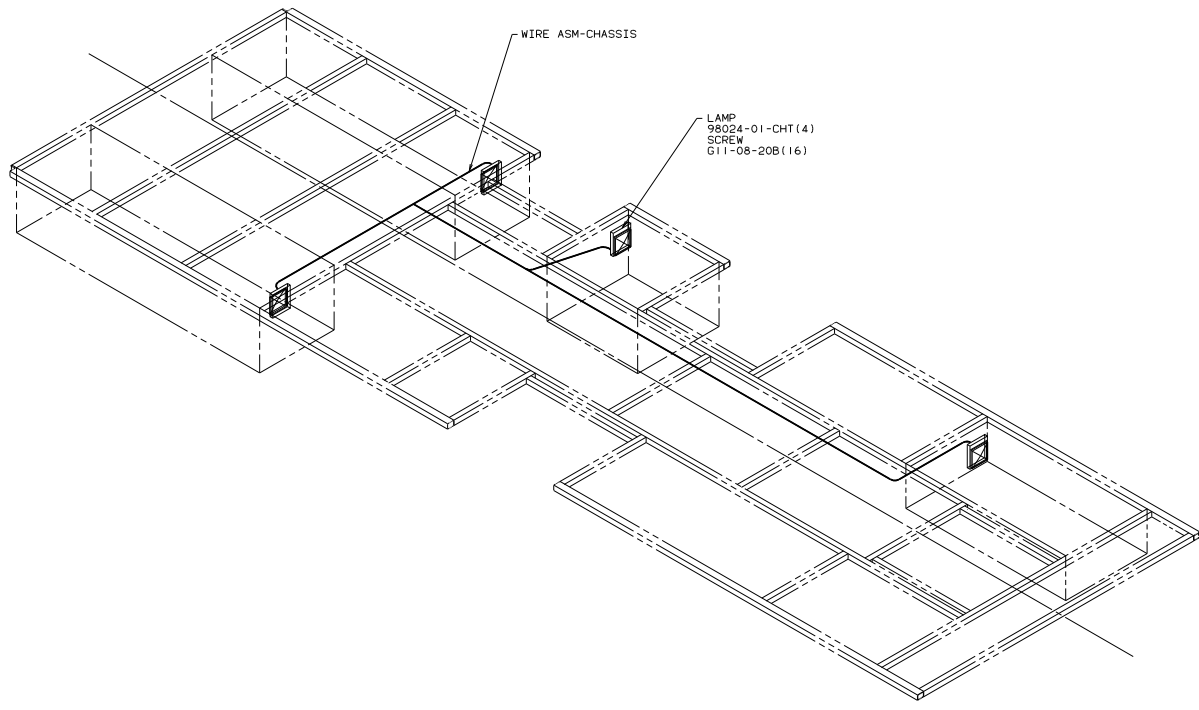
- (5) WIRE ROUTED IN FLOOR.
- (4) ADAPTER-COAXIAL SUPPLIED LOOSE IN VEHICLE.
- (3) ADD RUBBER BUMPER TO ROOF UNDER EACH END OF ANTENNA TO PREVENT CONTACT WITH ROOF.
- (2) LOCATE TO RETAIN CABLE BUT NOT TO RESTRICT TRAVEL OF ANTENNA.
- (1) SEE DRAWING 76319-01-000 FOR INSTALLATION OF TV ANTENNA.

NOTES:

MONITOR PANEL/
COAXIAL CABLES
90 W/ICP32RQ

| | |
|--------------------------|---------|
| TITLE: WIRING INSTL-BODY | |
| 30 NET SCALE DRAWING | FILE NO |
| SHEET 10 OF 12 | 97726 |

H
G
F
E
D
C
B
A

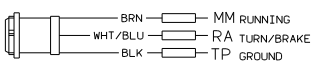


WIRE ASM-CHASSIS

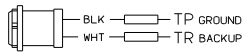
LAMP
98024-01-CHT(4)
SCREW
G11-08-20B(16)

COMPARTMENT LAMPS
90 W/ICP32RQ

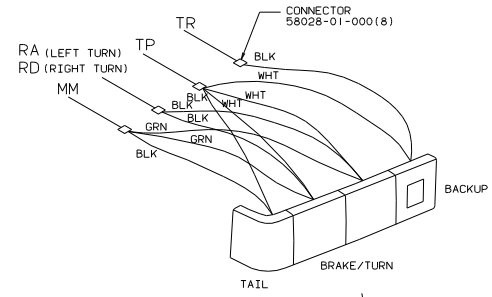
| | |
|--------------------------|--------------|
| TITLE: WIRING INSTL-BODY | |
| 30 NET SCALE DRAWING | SIZE 1/2 |
| SHEET 11 of 12 | Doc No 97726 |



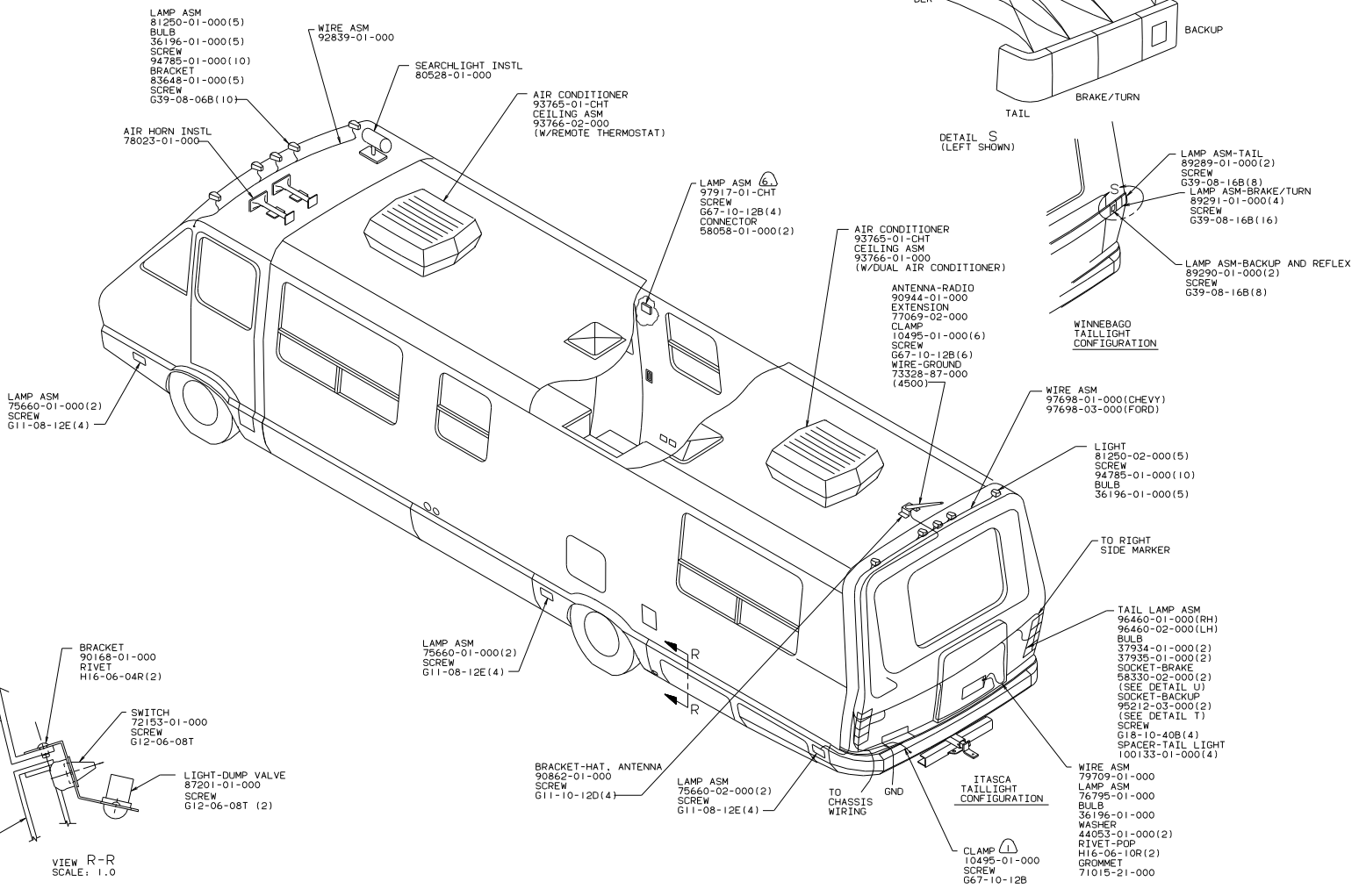
DETAIL U



DETAIL T



DETAIL S (LEFT SHOWN)



- NOTES:
- ⑥ SEAL WITH SEALER RIBBON.
 - ⑤ WINNEBAGO ONLY.
 - ④ USE WITH FORD CHASSIS
 - ③ SECURE WITH ADHESIVE 77029-01-000 OR EQUIVALENT.
 - ② USE WITH CHEVROLET CHASSIS
 - ① WIRE ASM-TRAILER LIGHTS 91300-02-000 TO BE SUPPLIED LOOSE IN COACH WITH TRAILER TOW PACKAGE.

EXTERIOR LIGHTING
90 W/ICP32RD

| | | | |
|----------------------|-------------------|--------|-------|
| TITLE | WIRING INSTL-BODY | | |
| 30 NET SCALE DRAWING | FILE | DWG NO | 97726 |
| SHEET 12 OF 12 | 1E | | |