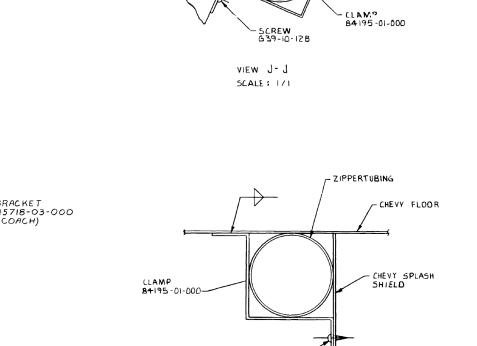
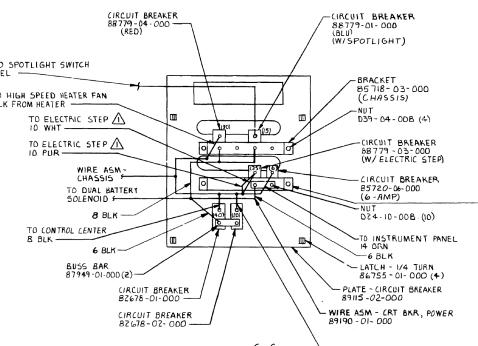
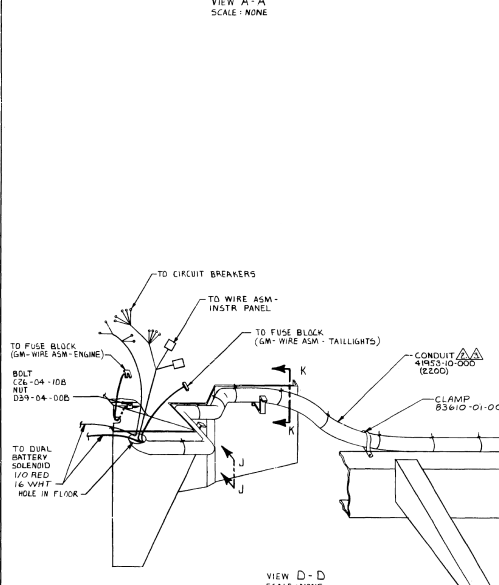
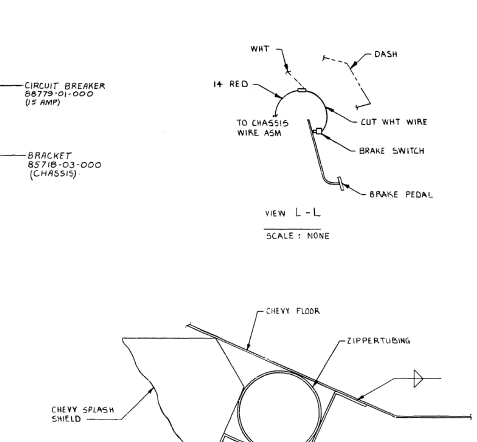
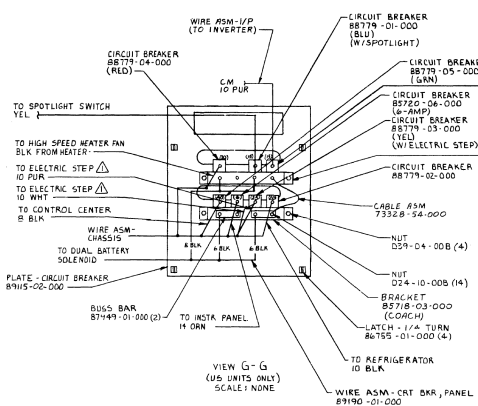
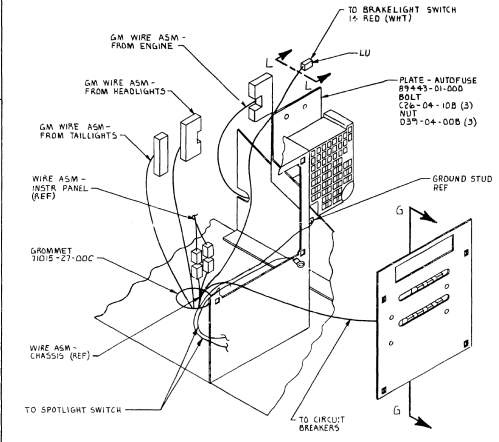


CHEVY WINWRAPS

DATE	BY	DATE	BY

WIRING INSTL - CHASSIS

REF B5714



▲ USE TIE-WIRE (8543-02-000) EVERY 150 MM.

▲ COVER AUX BATTERY CABLE AND TAIL LAMP WIRE ASM.

▲ TAKE TO WIRE ASM WITH TAPE 8543-01-000 WHEN NOT USED.

NOTES:

CHEVY

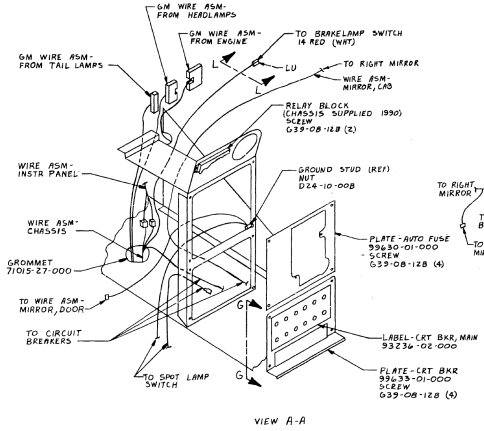
WIRING INSTL - CHASSIS

REV 1

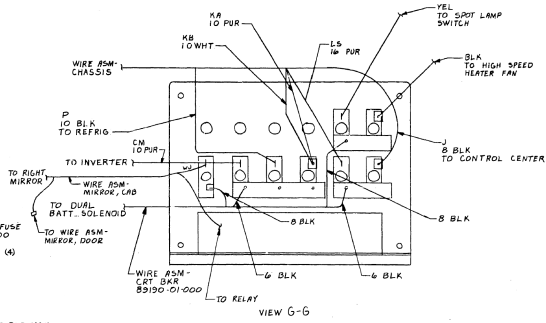
DATE 08/08/00

BY 2 M 3

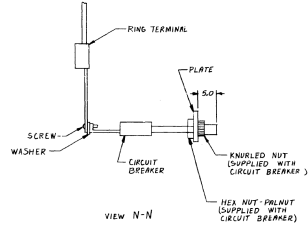
97597



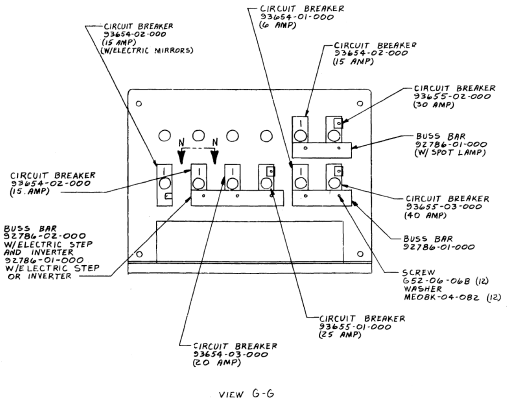
VIEW A-A



VIEW G-G



VIEW N-N



VIEW G-G

FOR ADDITIONAL INFORMATION, SEE WIRING INSTALLATION, FRONT END. NOTES: