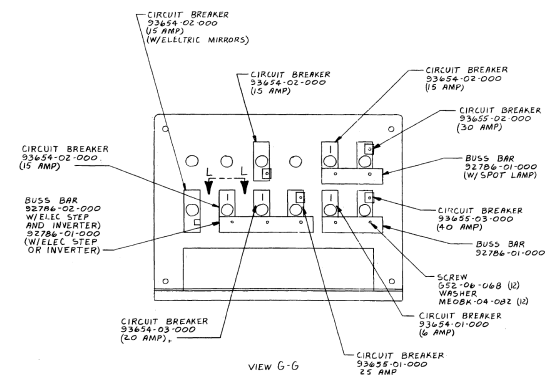
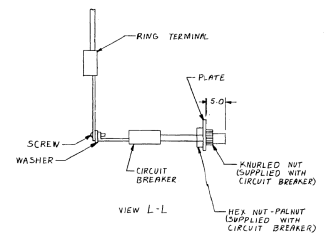
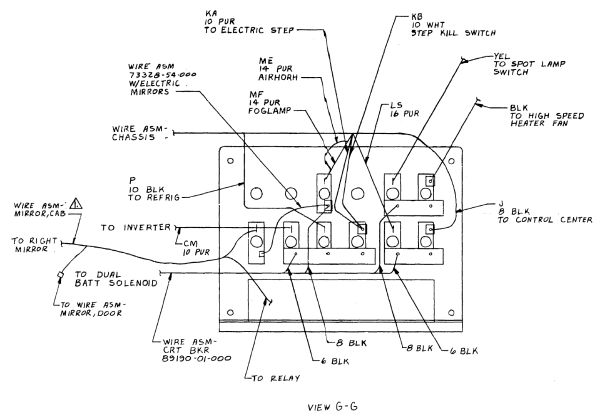
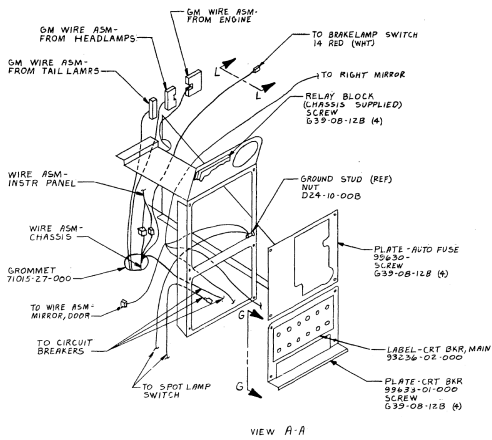


△ COVER AUX BATTERY CABLE AND TAIL LAMP WIRE ASM WITH CONDUIT 40353-10-000 OR 40353-11-000 AS REQUIRED.  
 (2) USE TIE-WIRE 13343-02-000 EVERY 150 MM.  
 △ TAPE TO WIRE ASM WITH TAPE 8363-01-000 WHEN NOT USED.  
 NDT-53

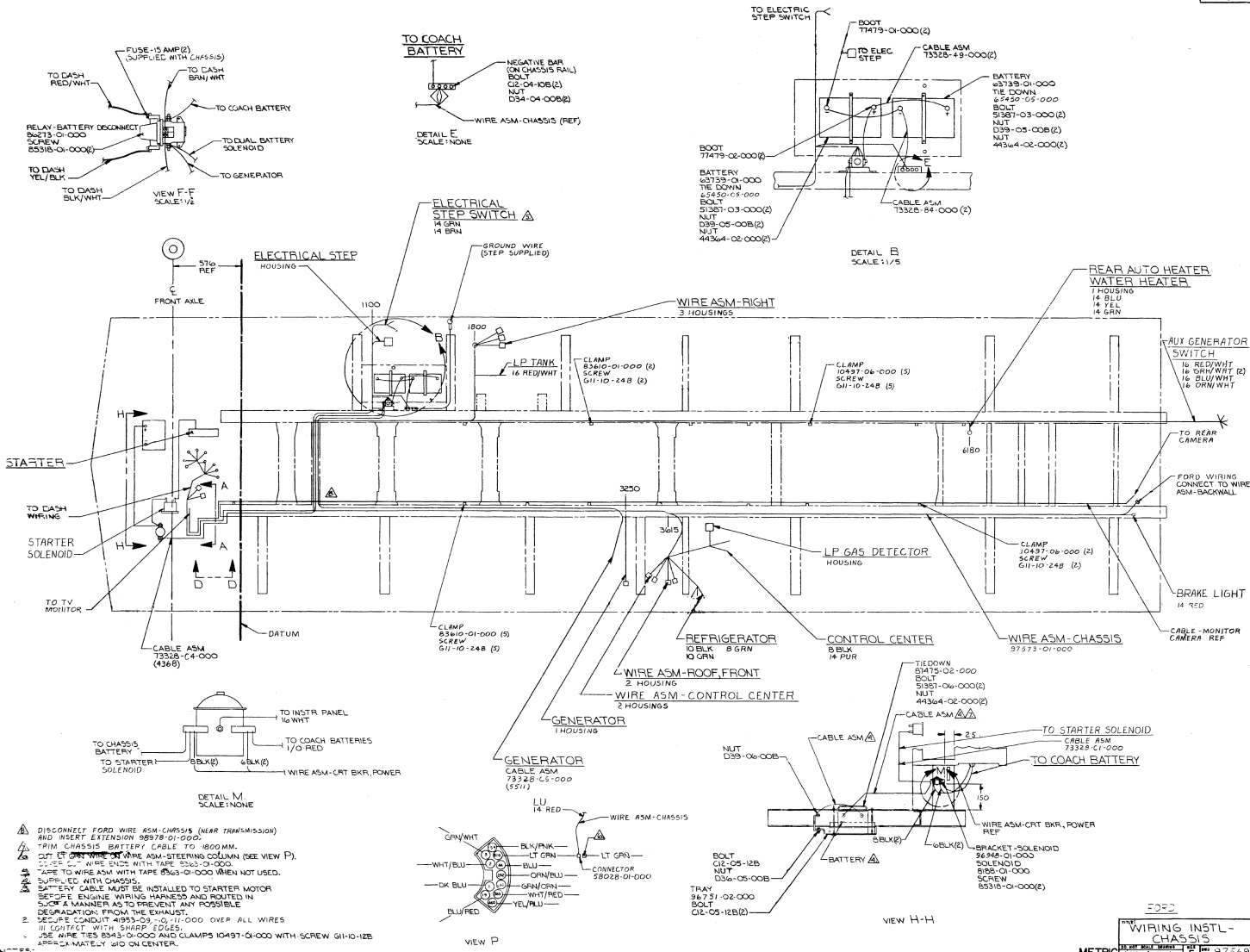


FOR ADDITIONAL INFORMATION, SEE WIRING INSTALLATION, PAGES 1 AND 2.

CHEVY

WIRING INSTL - CHASSIS

97569



- 1. DISCONNECT FORD WIRE ASM-CHASSIS (NEAR TRANSMISSION) AND INSERT EXTENSION 88978-01-000.
- 2. TRIM CHASSIS BATTERY CABLE TO 1800MM.
- 3. CUT UP ONE WIRE AND WIRE ASM-STEERING COLUMN (SEE VIEW P).
- 4. USE WIRE BOND WITH TAPE 10463-01-000.
- 5. TAPE TO WIRE ASM WITH TAPE 10463-01-000 WHEN NOT USED.
- 6. SUPPLY WITH CHASSIS.
- 7. BATTERY CABLE MUST BE INSTALLED TO STARTER MOTOR BEFORE ENGINE WIRING HARNESSES AND ROUTED IN SUCH A MANNER AS TO PREVENT ANY POSSIBLE DEGRADATION FROM THE EXHAUST.
- 8. SECURE CONDUIT 10493-02-01-000 OVER ALL WIRES IN CONTACT WITH SHARP EDGES.
- 9. USE WIRE TIES 8043-01-000 AND CLAMPS 10497-01-000 WITH SCREW 6110-12B APPROXIMATELY 200 ON CENTER.

