

- (12) USE WITH REFRIGERATOR WITH ICEMAKER.
- (11) USE WITHOUT ROOF AIR CONDITIONER.
- (10) ADD 1/3 DIA HOLE IN BOTTOM CENTER NEAR SIDE AWAY FROM SIDEWALL.
- (9) COVER WIRES WITH CONDUIT 41953-01-000 IN THIS AREA.
- (8) LOCATE TOP OF RECP 350 ABOVE SHELF.
- (7) WIRE ROUTED IN FLOOR.
- (6) INSTALL RECP/TACLE WITH GROUND TOWARD OUTBOARD SIDE OF VEHICLE.
- (5) SEAL WITH BEDDING COMPOUND 69639-01-000.
- (4) USE WITH GENERATOR ONLY.

3. ALL GROUND WIRES TO BE COVERED WITH TUBING 8041-02-000.
 2. ALL 110 V WIRES ARE TO BE CLAMPED WITH CLAMP 10495-05-000 WITHIN 200 OF OUTLET BOXES. USE SCREW G67-10-128.
 1. ALL WIRES TO BE CLAMPED WITH CLAMP 10495-01-000 OR CLIP 80734-01-000 EVERY 1220. USE SCREW G67-10-128 UNLESS OTHERWISE SPECIFIED.

NOTES:

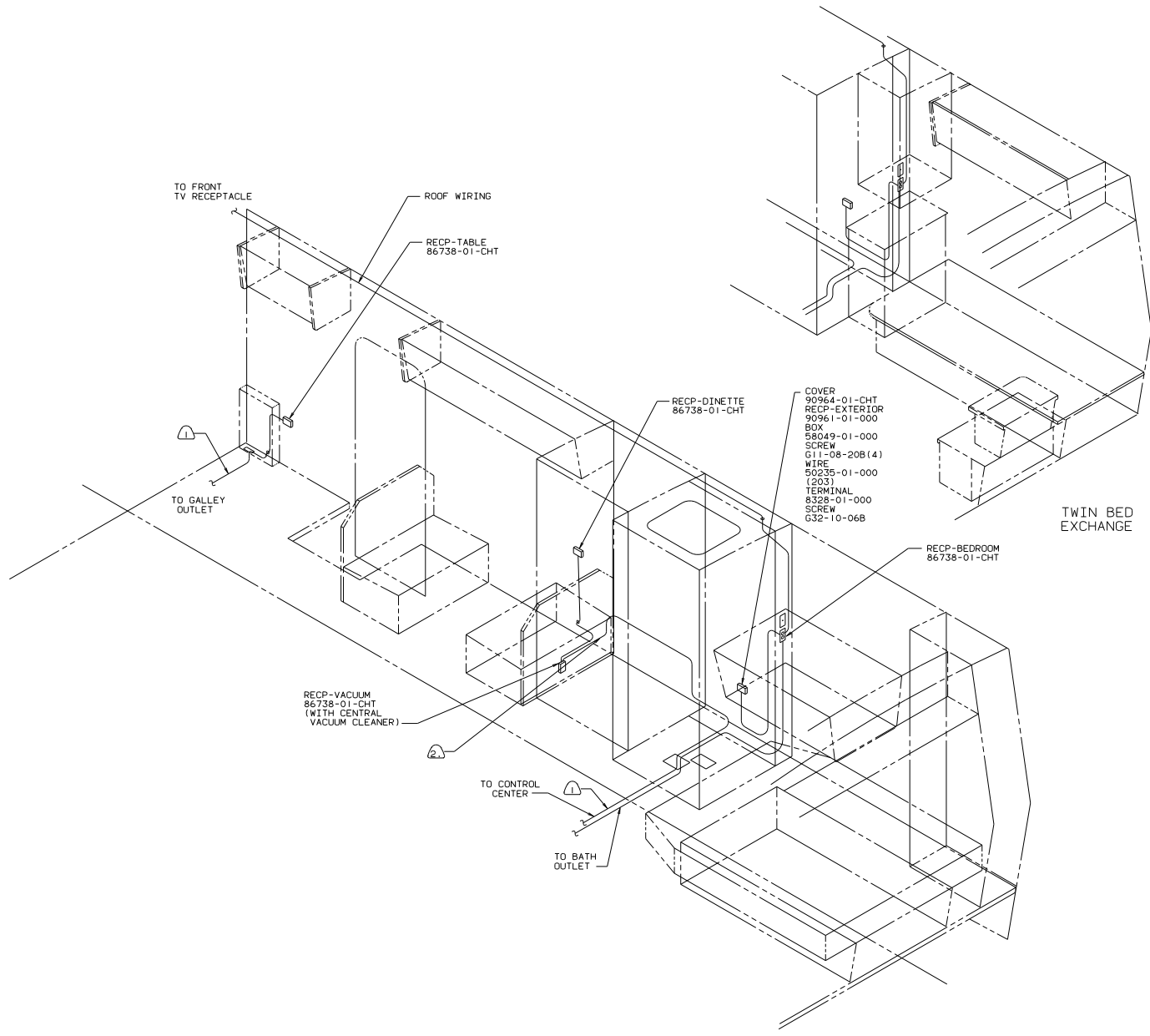
UNIT	SHEET
US	1, 2, 3, 4, 8, 9, 10, 11, 12
CAN	4, 5, 6, 7, 8, 9, 10, 11, 12



110V (US)
 90 W/1CM31RD

DATE	UNAPPROVED TOLERANCES ARE:	MATERIAL
DATE	FRAC	FRAC
DATE	ONE-PLACE (FR. 2)	ONE-PLACE (FR. 2)
DATE	ONE-PLACE (FR. 200)	ONE-PLACE (FR. 200)
DATE	ANG	ANG
DATE	THRU HOLE PROJECTION	THRU HOLE PROJECTION

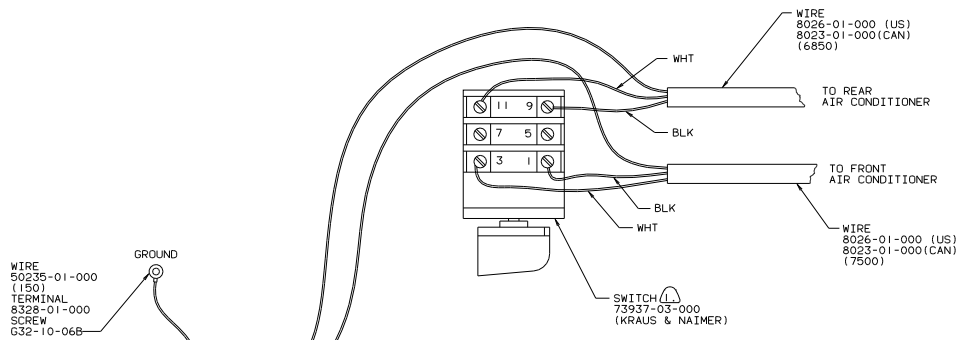
LANOT LV-0598 TITLE WIRING INSTL-BODY
 DIA # SCALE: 1/10 100 MIL SCALE DRAWING SHEET 1 OF 12
 ALL DIMENSIONS ARE IN MILLIMETERS SHEET 1 OF 12 REF: 89623 97568



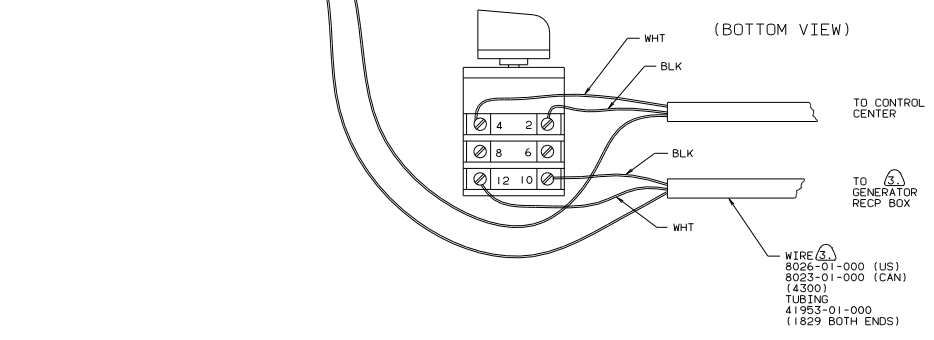
- NOTES:
- ② COVER WIRES WITH CONDUIT 41953-01-000 IN THIS AREA.
 - ① WIRE ROUTED IN FLOOR.

110V (US)

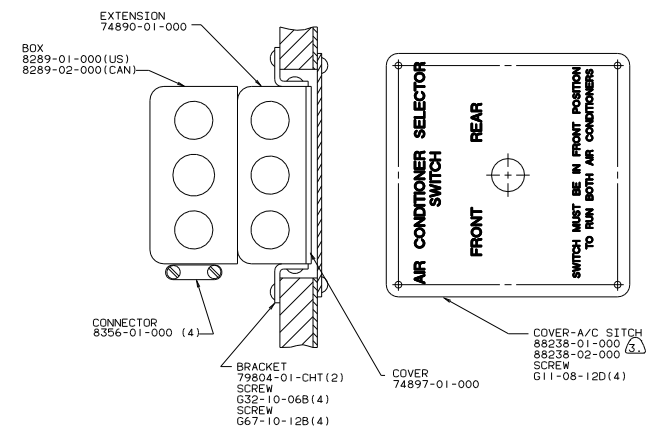
TITLE		WIRING INSTL-BODY	
DO NOT SCALE DRAWING	DATE	REV	NO
SHEET 2	OF 12	1	1
			97568



(TOP VIEW)



(BOTTOM VIEW)



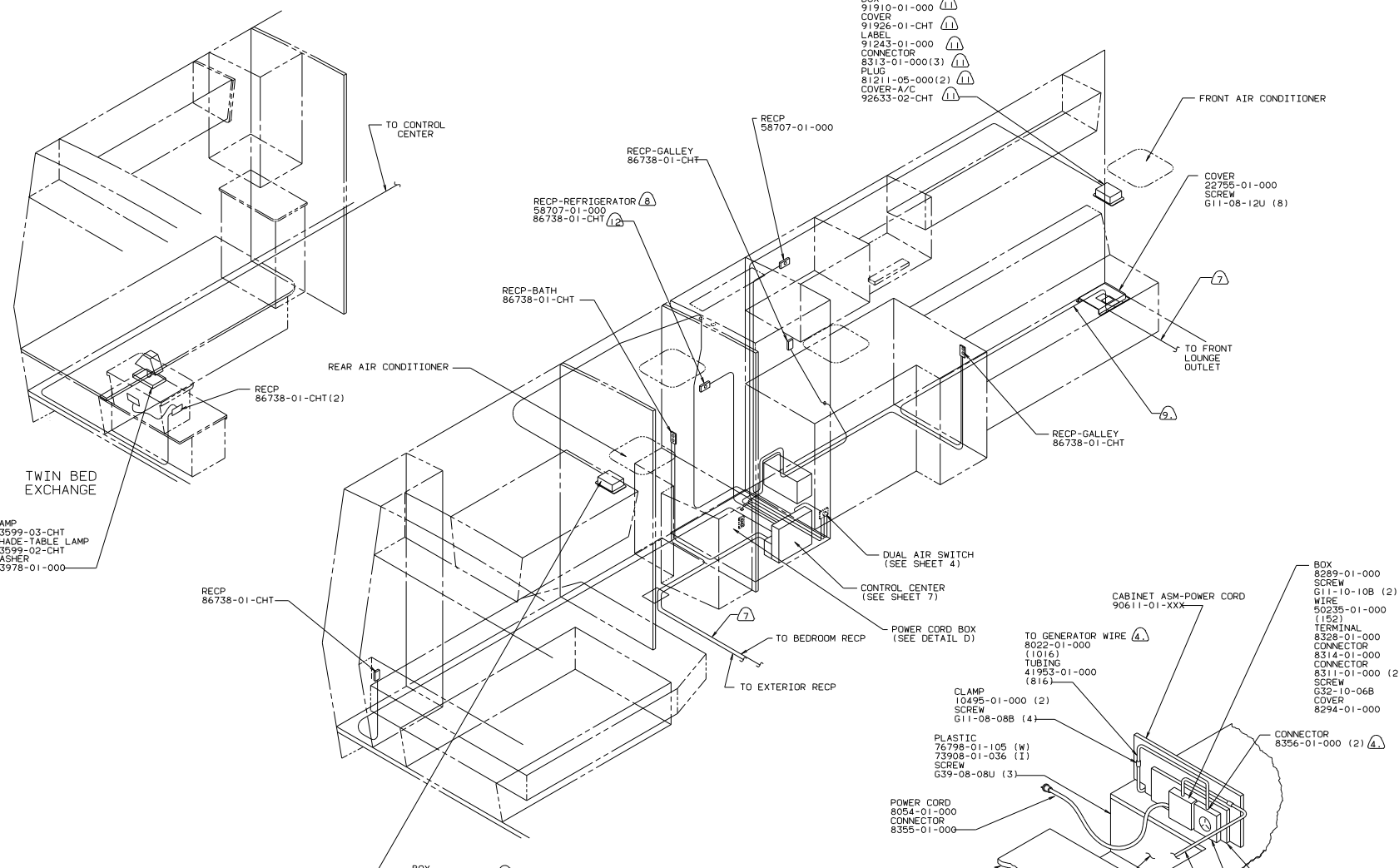
TOP VIEW OF BOX

- NOTES:
- ③ USE WITH 6500 WATT GENERATOR OF LARGER.
 - ② ALL GROUND WIRES TO BE COVERED WITH TUBING 8041-02-000.
 - ① FASTEN SWITCH TO COVER 74897-01-000 BEFORE FASTENING COVER TO BOX.

DUAL AIR SWITCH
110 V (US/CAN)

TITLE		97568	
WIRING INSTL-BODY (US)			
DO NOT SCALE DRAWING	SHEET	OF	
	4	12	

- BOX 91910-01-000 (1)
- COVER 91926-01-CHT (1)
- LABEL 91243-01-000 (1)
- CONNECTOR 8313-01-000(3) (1)
- PLUG 81211-05-000(2) (1)
- COVER-A/C 92633-02-CHT (1)



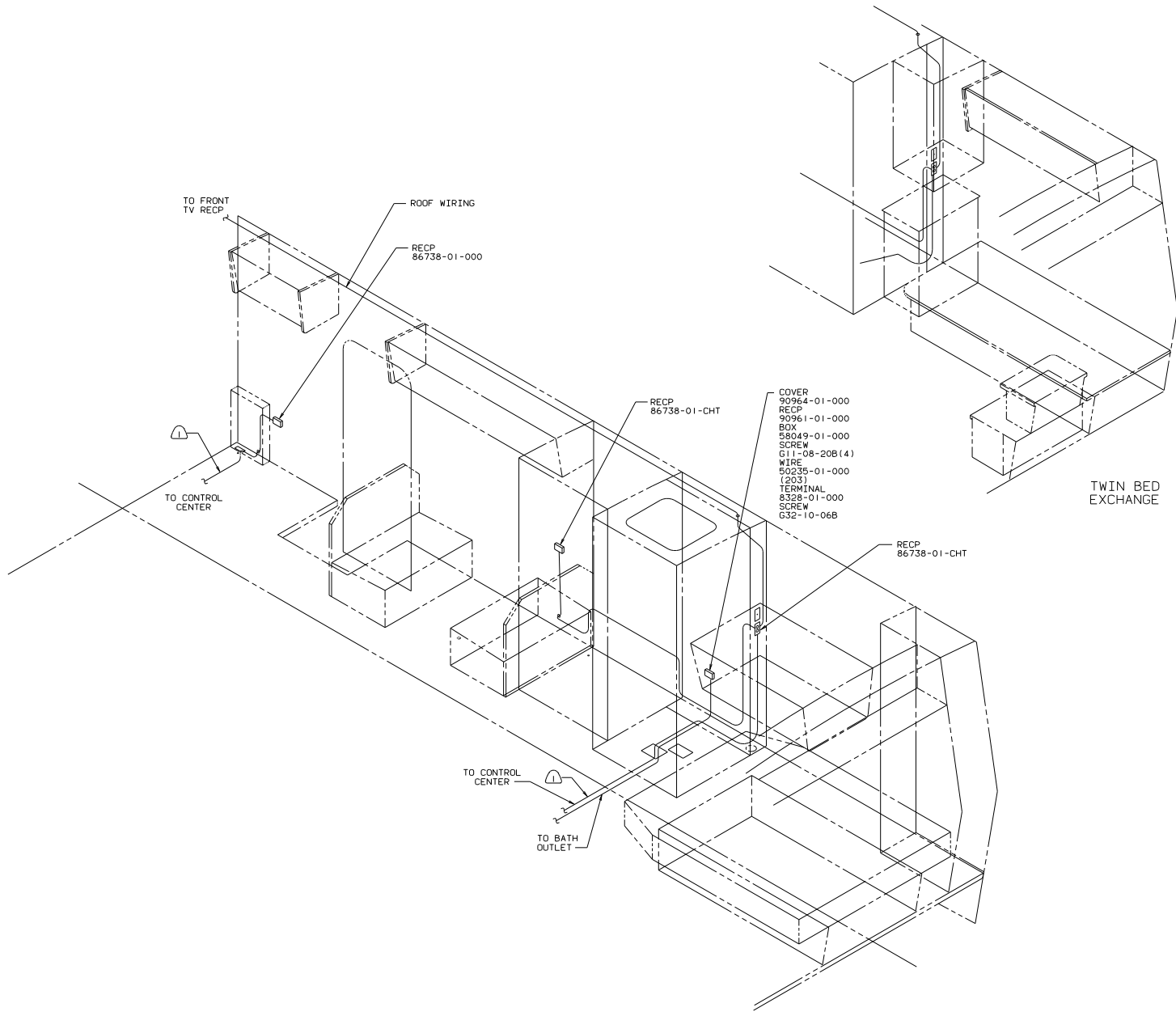
- (12) USE WITH REFRIGERATOR WITH ICEMAKER.
- (11) USE WITHOUT ROOF AIR CONDITIONER.
- (10) ADD 13 DIA HOLE IN BOTTOM CENTER. NEAR SIDE AWAY FROM SIDEWALL.
- (9) COVER WIRES WITH CONDUIT 41953-01-000 IN THIS AREA.
- (8) LOCATE TOP OF RECP 350 ABOVE SHELF.
- (7) WIRE ROUTED IN FLOOR.
- (6) INSTALL RECP TACLE WITH GROUND TOWARD OUTBOARD SIDE OF VEHICLE.
- (5) SEAL WITH BEDDING COMPOUND 69639-01-000.
- (4) USE WITH GENERATOR ONLY.

- 3. ALL GROUND WIRES TO BE COVERED WITH TUBING 8041-02-000.
- 2. ALL 110 V WIRES ARE TO BE CLAMPED WITH CLAMP 10497-05-000 WITHIN 200 OF OUTLET BOXES. USE SCREW G67-10-12B.
- 1. ALL WIRES TO BE CLAMPED WITH CLAMP 10495-01-000 OR CLIP 80734-01-000 EVERY 1220. USE SCREW G67-10-12B UNLESS OTHERWISE SPECIFIED.

NOTES:

110V (CAN)

TITLE		WIRING INSTL-BODY	
DO NOT SCALE DRAWING	SHEET	5	12
DATE	NO.	1	1
97568			



TWIN BED EXCHANGE

TO FRONT TV RECP

ROOF WIRING

RECP 86738-01-000

TO CONTROL CENTER

RECP 86738-01-CHT

COVER 90964-01-000
 RECP 90961-01-000
 BOX 58049-01-000
 SCREW G11-08-20B (4)
 WIRE 50235-01-000 (203)
 TERMINAL 8328-01-000
 SCREW G32-10-06B

RECP 86738-01-CHT

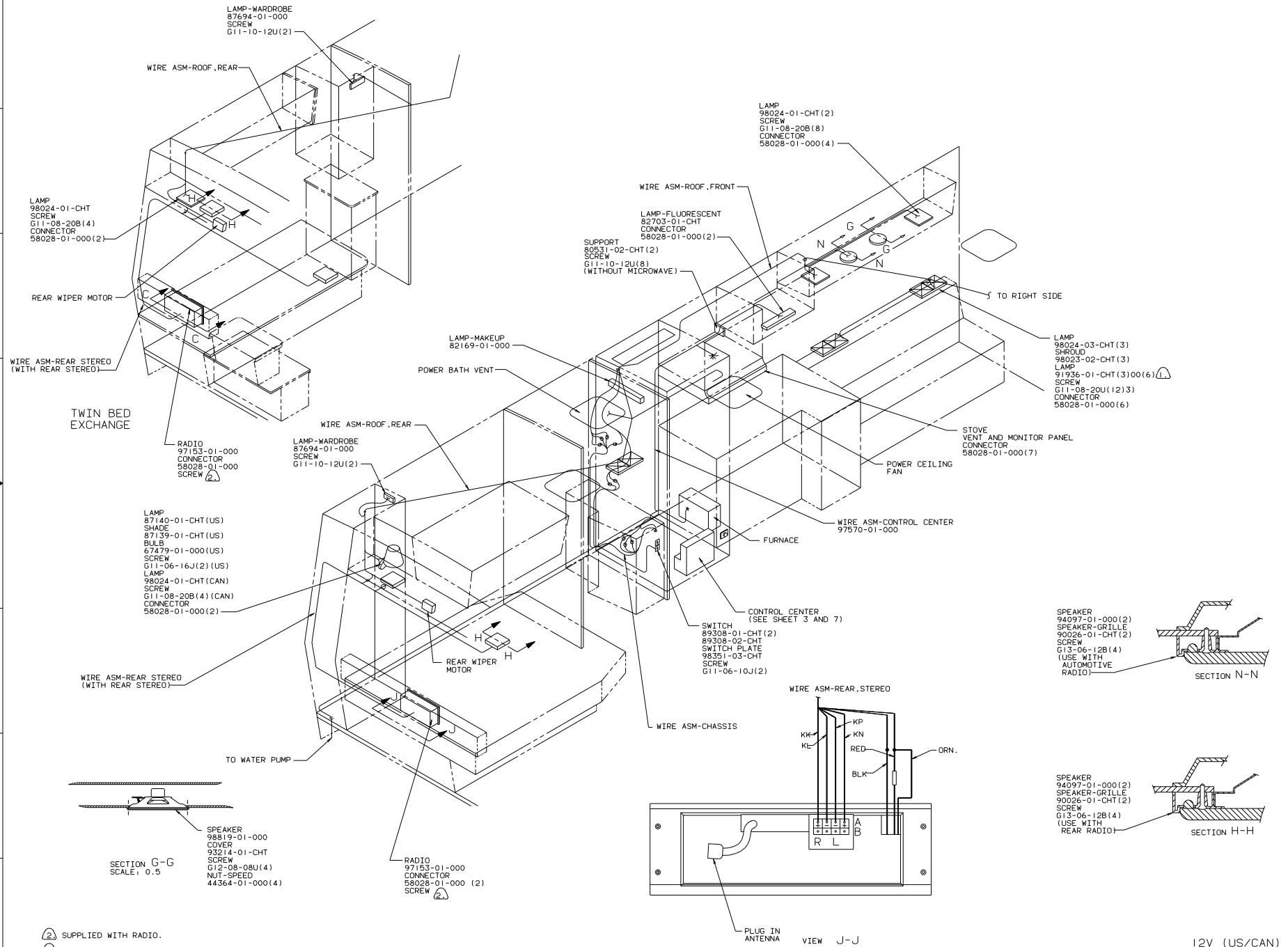
TO CONTROL CENTER

TO BATH OUTLET

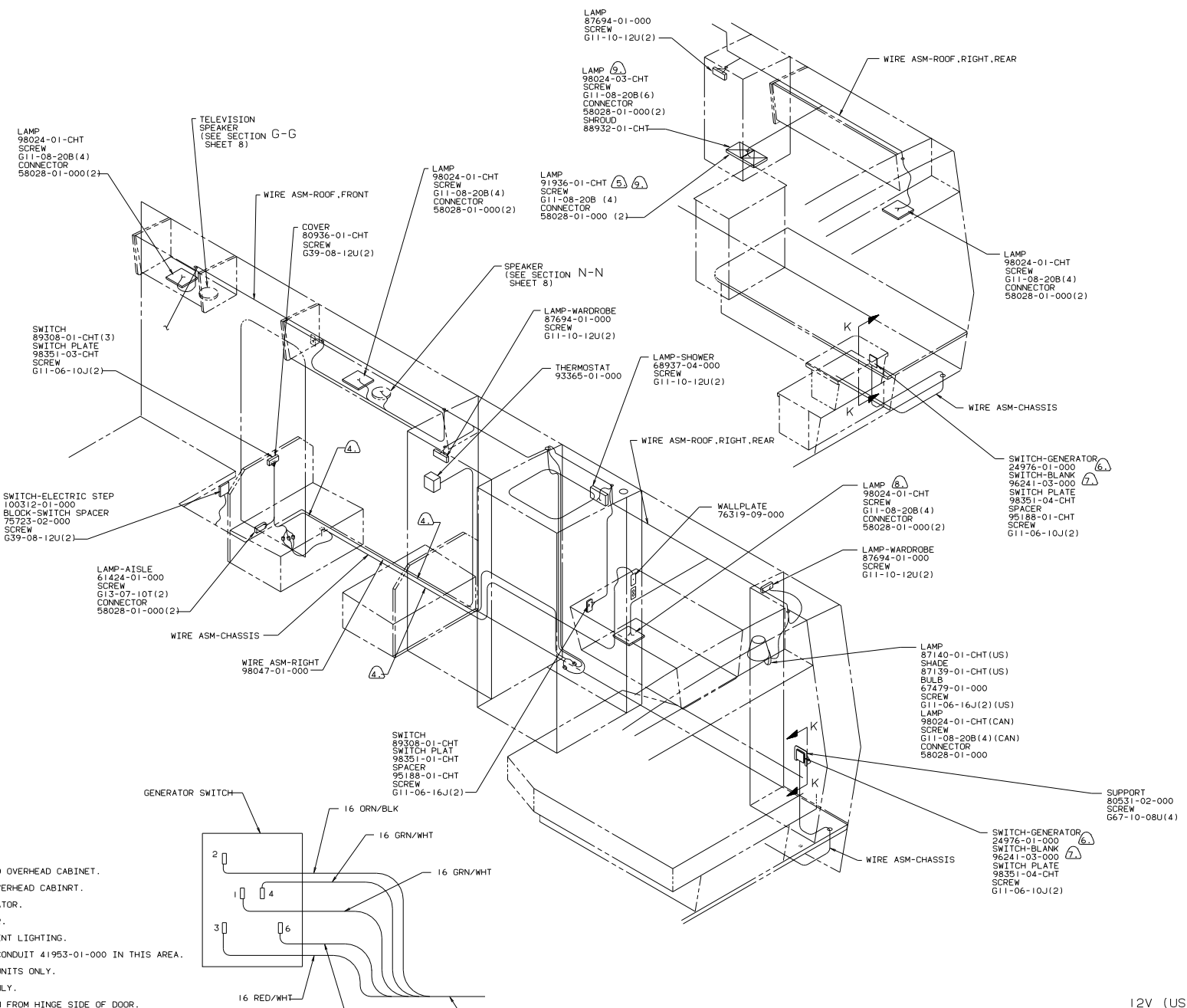
1 WIRE ROUTED IN FLOOR.

110V (CAN)

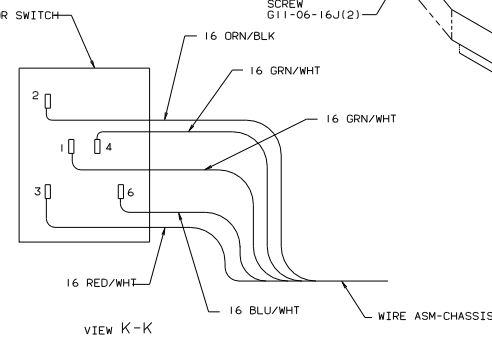
TITLE		97568	
WIRING INSTL-BODY			
30 MIL SCALE DRAWING	DATE		
SHEET 6 OF 12	1.1 E		



NOTES:
 (2) SUPPLIED WITH RADIO.
 (1) USE WITH FLOURESCENT LIGHTING.

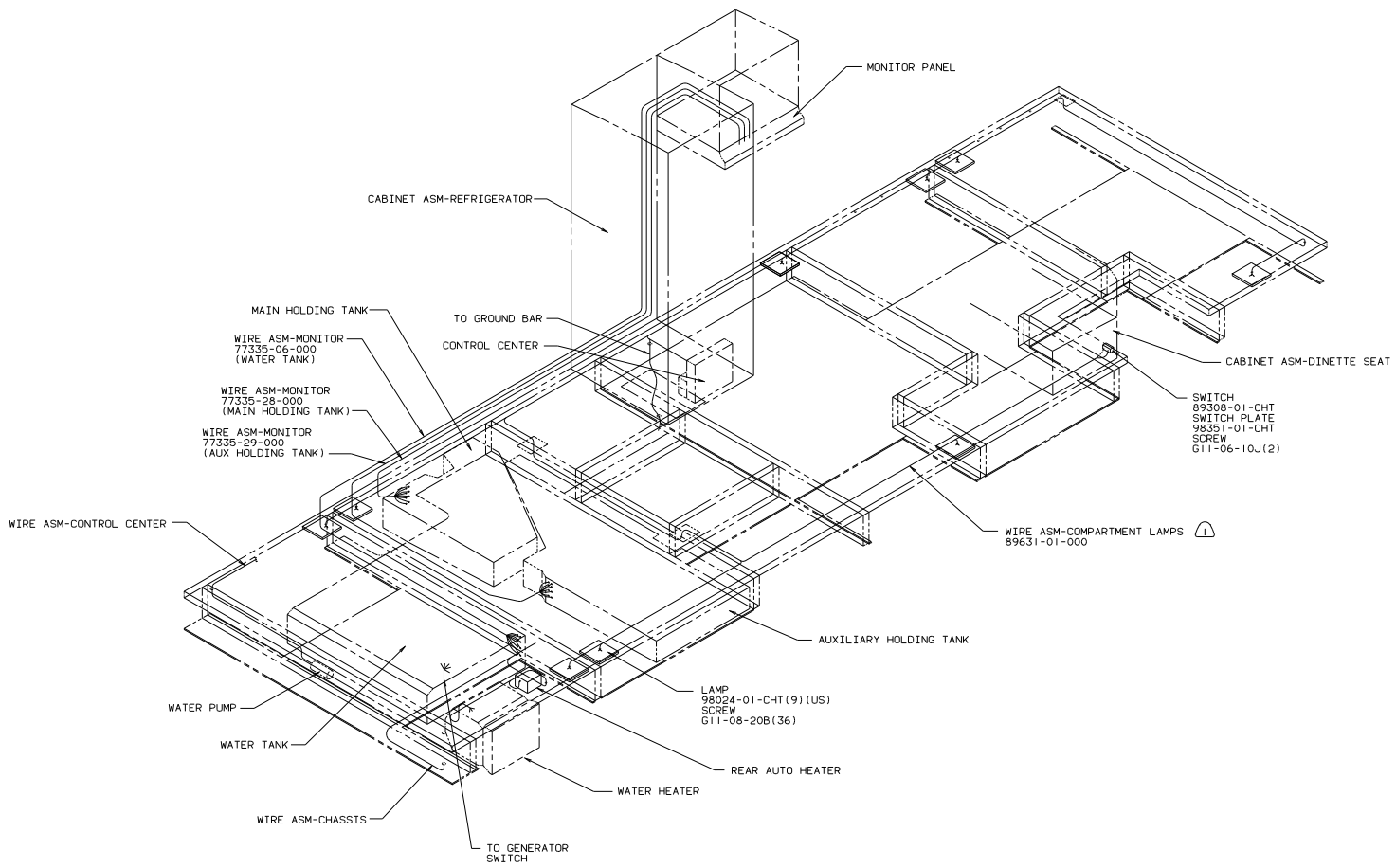


- ⑨ USE WITHOUT ISLAND OVERHEAD CABINET.
- ⑧ USE WITH ISLAND OVERHEAD CABINET.
- ⑦ USE WITHOUT GENERATOR.
- ⑥ USE WITH GENERATOR.
- ⑤ USE WITH FLUORESCENT LIGHTING.
- ④ COVER WIRES WITH CONDUIT 41953-01-000 IN THIS AREA.
- ③ USE ON WINNEBAGO UNITS ONLY.
- ② USE ON US UNITS ONLY.
- ① MOUNT SWITCH 100MM FROM HINGE SIDE OF DOOR.



12V (US/CAN)

TITLE		DRAWING		DATE	
WIRING INSTL-BODY		97568			
NO. OF SHEETS	OF	SHEET	NO.	REV.	NO.
9	12	9	1		

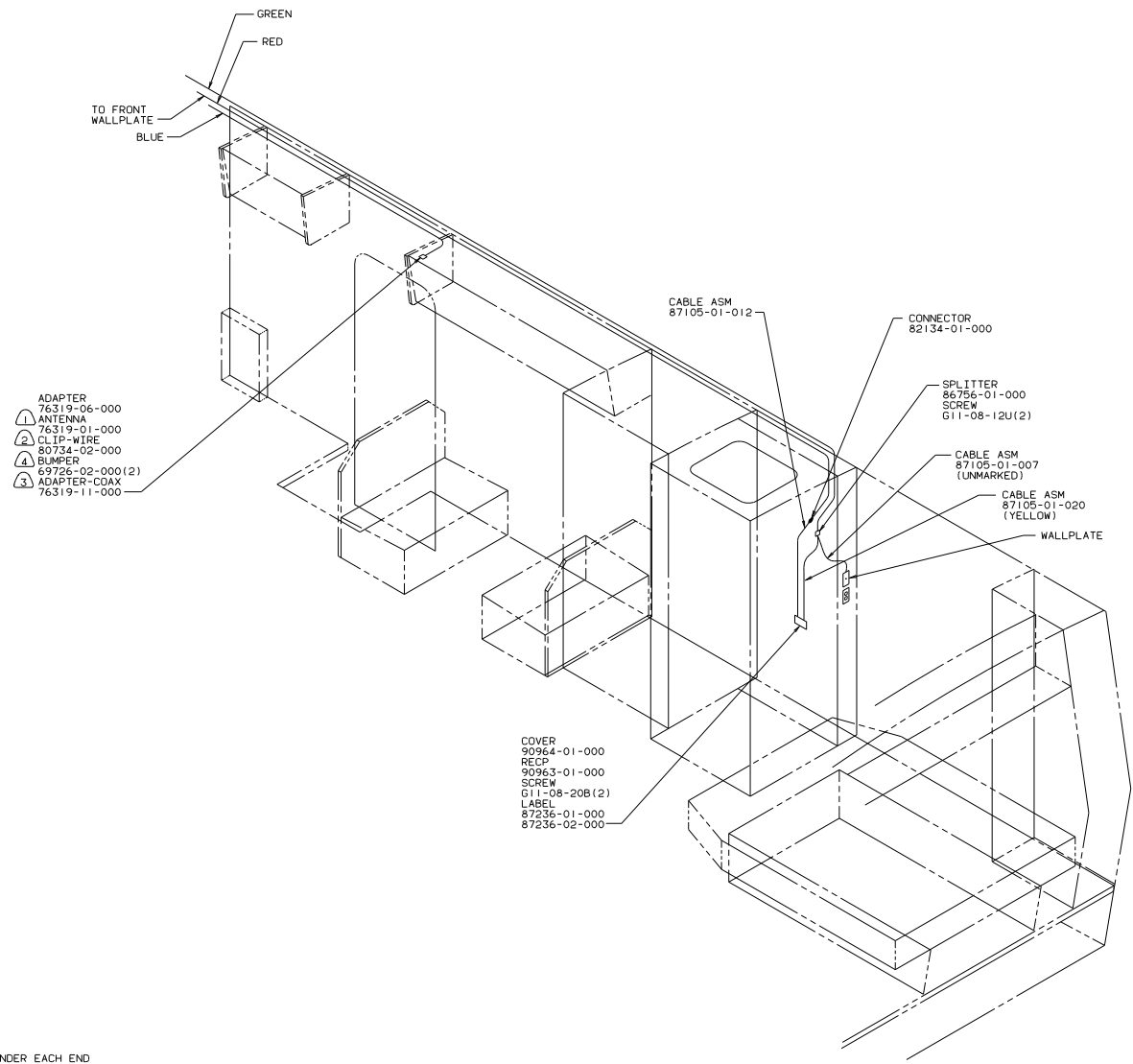


⚠️ ROUTED UNDER CARPET.

NOTES:

COMPARTMENT LAMP-MONITOR PANEL

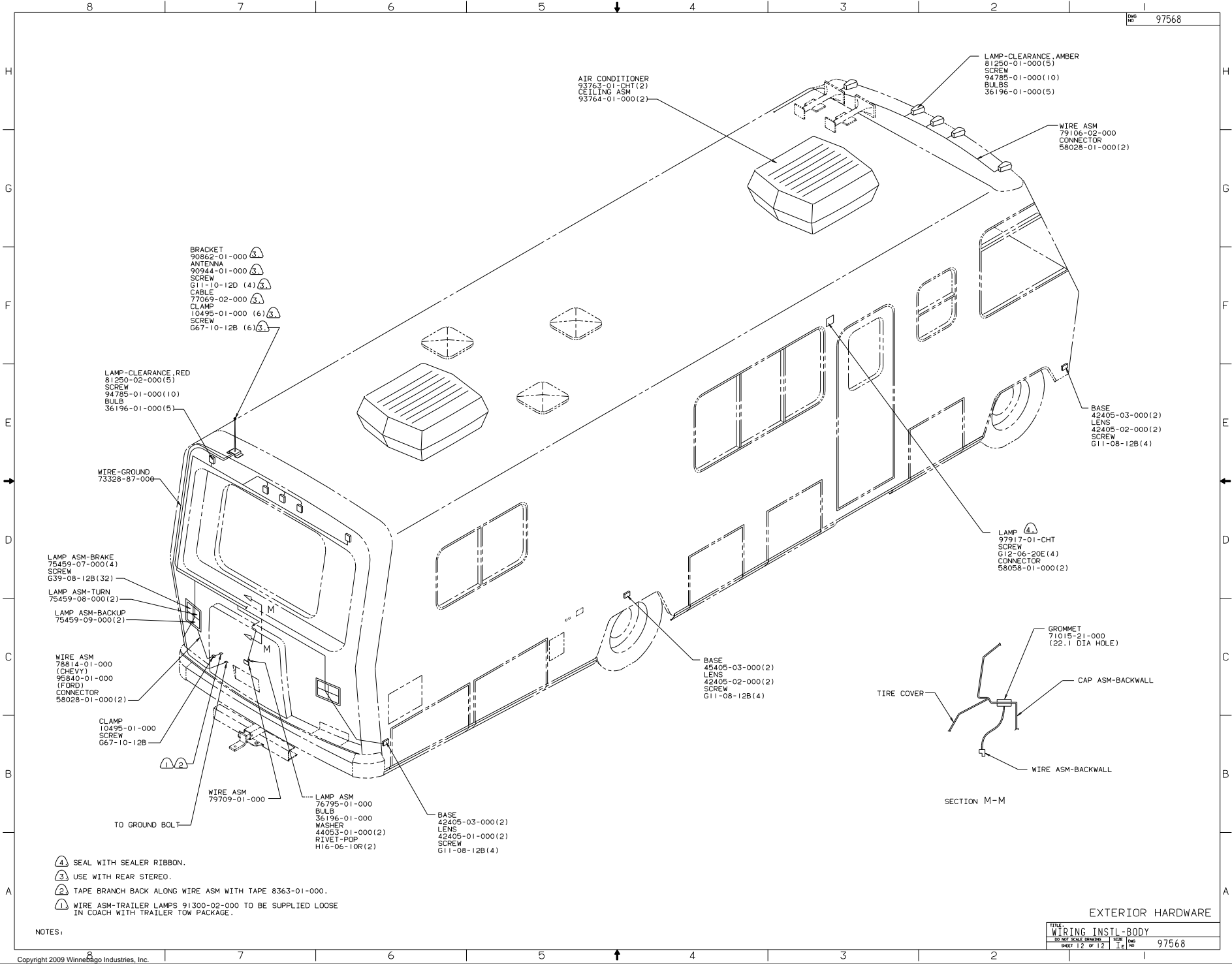
TITLE		97568	
WIRING INSTL-BODY			
DO NOT SCALE DRAWING	FILE NO		
SHEET 10 OF 12	DATE		



- 4 ADD RUBBER BUMPER TO ROOF UNDER EACH END OF ANTENNA WHEN IN DOWN POSITION WHICH MAY COME IN CONTACT WITH ROOF.
- 3 ADAPTER-COAX SUPPLIED LOOSE IN VEHICLE.
- 2 LOCATE TO RETAIN CABLE BUT NOT RESTRICT TRAVEL TO ANTENNA.
- 1 SEE DRAWING 76319-01-000 FOR INSTALLATION OF TO ANTENNA.

COAXIAL CABLE

TITLE		97568	
WIRING INSTL-BODY			
DO NOT SCALE DRAWING	FILE NO		
SHEET 11 OF 12	REV		



SECTION M-M

- ④ SEAL WITH SEALER RIBBON.
- ③ USE WITH REAR STEREO.
- ② TAPE BRANCH BACK ALONG WIRE ASM WITH TAPE 8363-01-000.
- ① WIRE ASM-TRAILER LAMPS 91300-02-000 TO BE SUPPLIED LOOSE IN COACH WITH TRAILER TOW PACKAGE.

NOTES:

EXTERIOR HARDWARE

TITLE		97568	
WIRING INSTL-BODY			
DO NOT SCALE DRAWING	SHEET	TAB	REV
12 OF 12	1	1	1