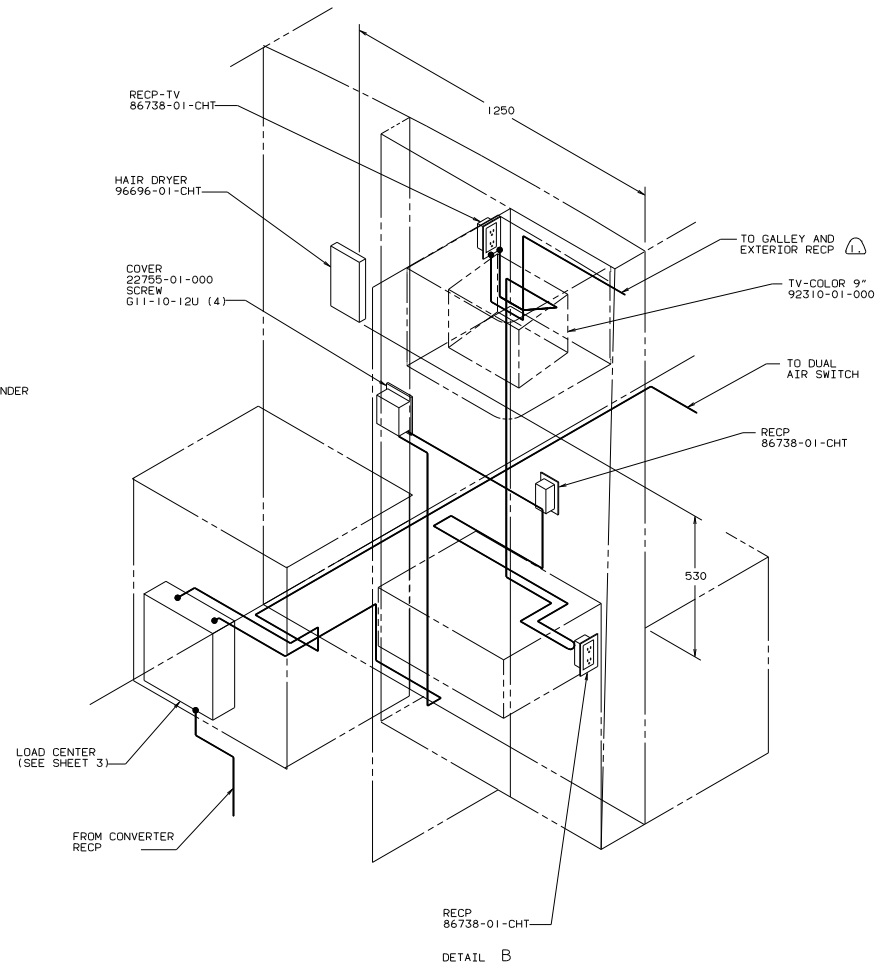
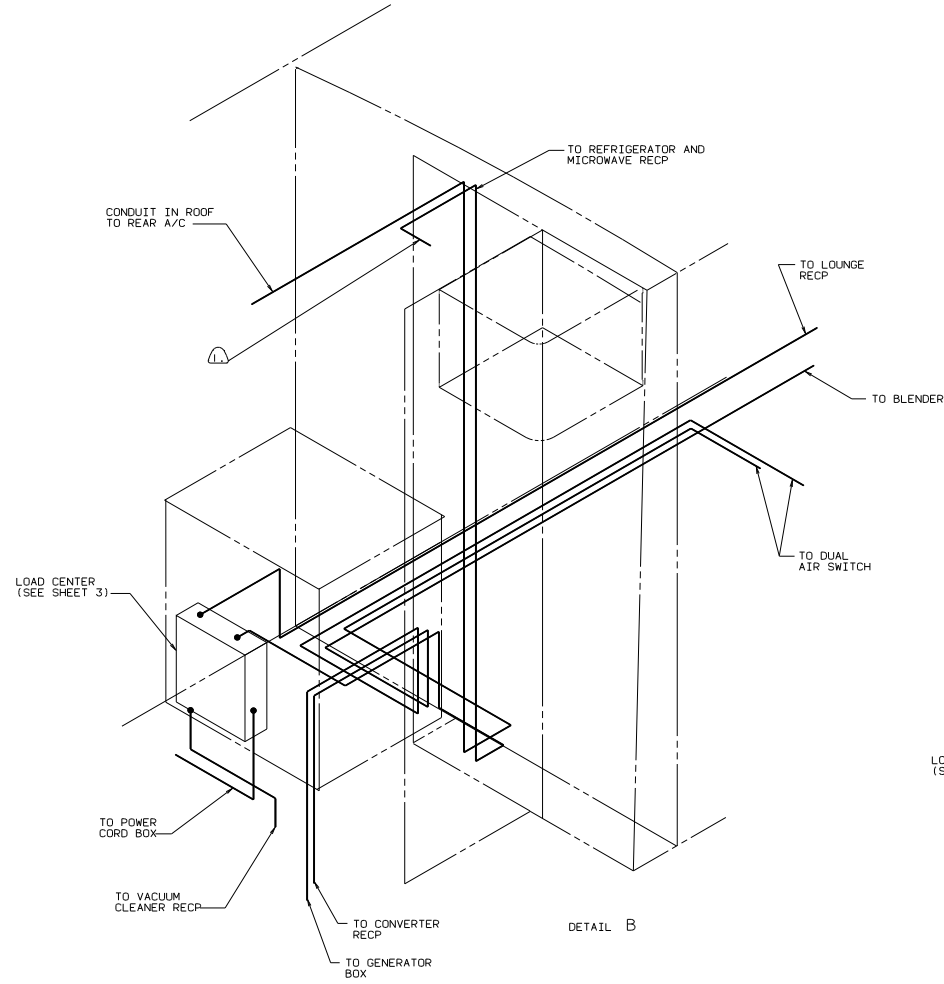


- ① WIRE ROUTED TO FLOOR-LOWER (SEE VIEW FLOOR-LOWER).
  - ⑩ WIRE IN SIDEWALL.
  - ⑨ COVER WIRES WITH CONDUIT 41953-01-000 IN THIS AREA.
  - ⑧ WIRE ROUTED IN THE ROOF.
  - ⑦ WIRE ROUTED IN FLOOR.
  - ③ INSTALL RECPTACLE WITH GROUND TOWARD OUTBOARD SIDE OF VEHICLE.
  - ⑤ SEAL WITH BEDDING COMPOUND 69639-01-000.
  - ④ USE WITH GENERATOR ONLY.
3. ALL GROUND WIRES TO BE COVERED WITH TUBING 8041-02-000.  
 2. ALL 110 V WIRES ARE TO BE CLAMPED WITH CLAMP 10497-05-000 WITHIN 200 OF OUTLET BOXES, USE SCREW G67-10-12B.  
 1. ALL WIRES TO BE CLAMPED WITH CLAMP 10495-01-000 OR CLIP 80734-01-000 EVERY 700. USE SCREW G67-10-12B UNLESS OTHERWISE SPECIFIED.

LEFT SIDE  
110V (US)

UNDESIGNED TOLERANCES ARE:		MATERIAL:	
DPTR		WHALE DOP (41)	
CHR		ONE-PLATE (4, 20)	
P/E		TWO-PLATE (4, 20)	
M/E		WELD	
CONC		THIRD ANGLE PROJECTION	

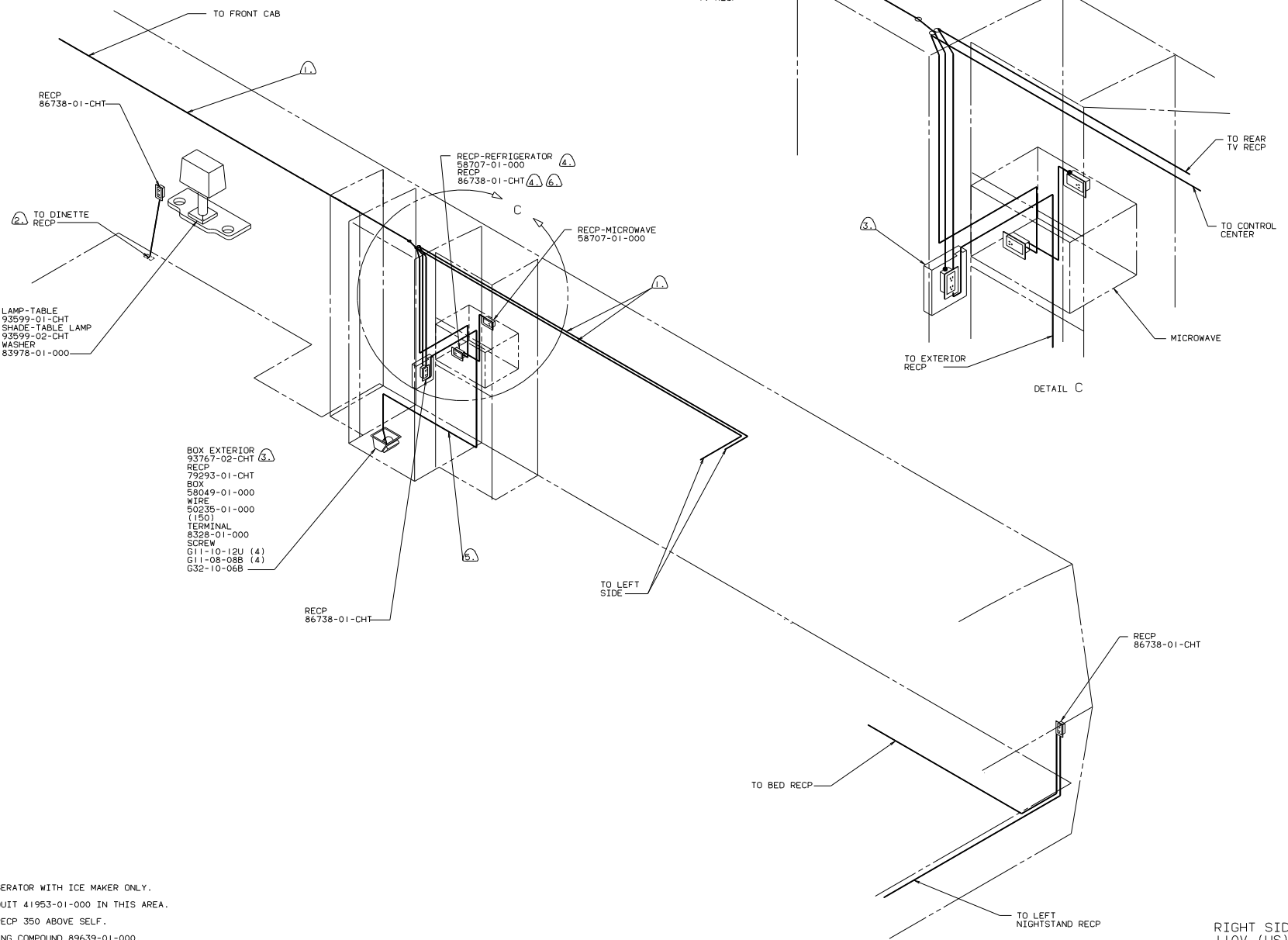
WINNEBAGO 90 W/1KM40R0  
 PART M40R09 TITLE: WIRING INSTL-BODY  
 SHEET 1 OF 18 I.E. NO. 97545



WIRE ROUTED IN ROOF.

LEFT SIDE  
110V (US)  
90 W/IKM4ORD

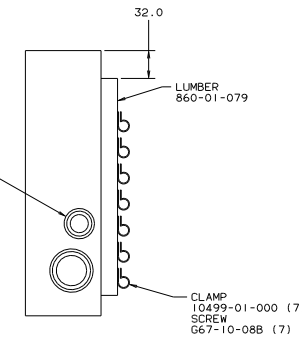
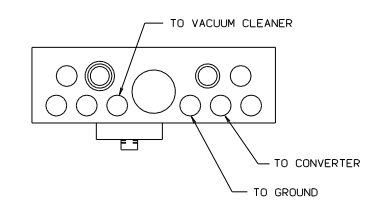
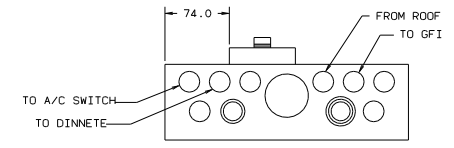
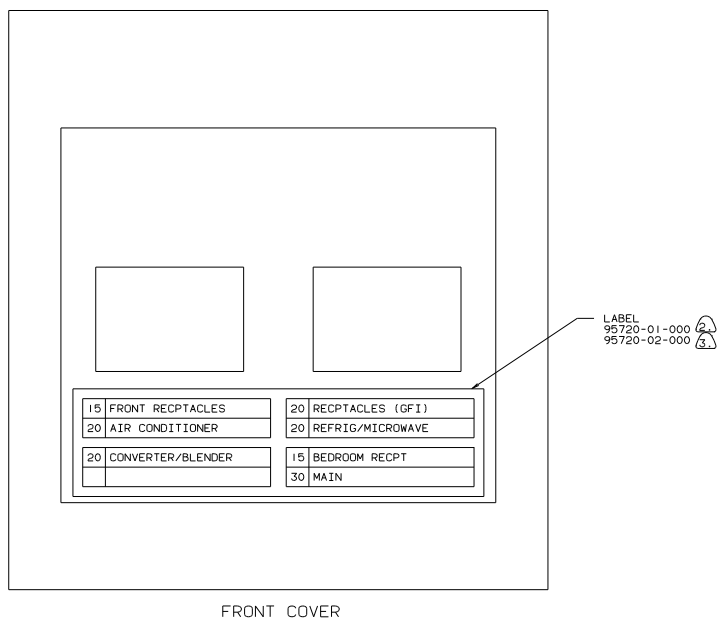
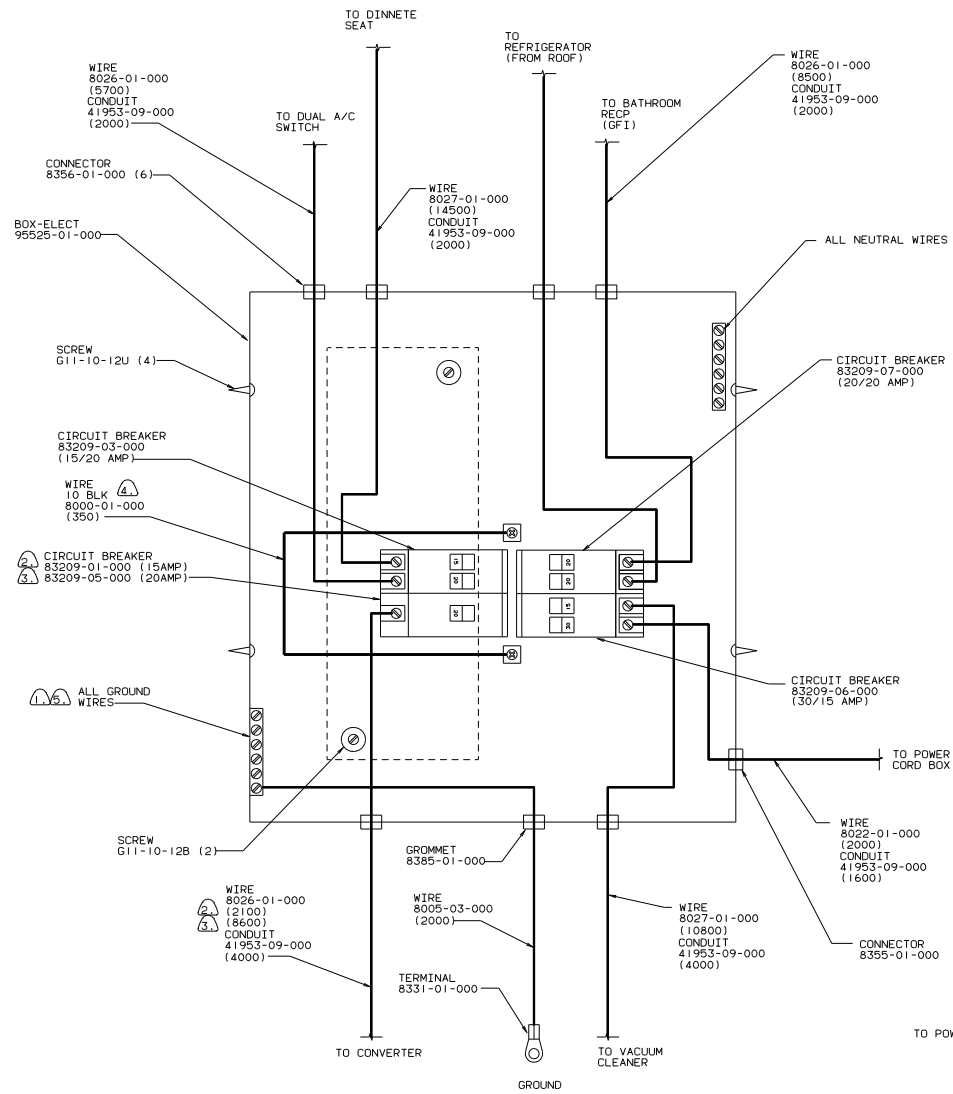
TITLE: WIRING INSTL-BODY		DWG NO: 97545	
30 NET SCALE DRAWING	REV	DATE	
SHEET 2 OF 18	1		



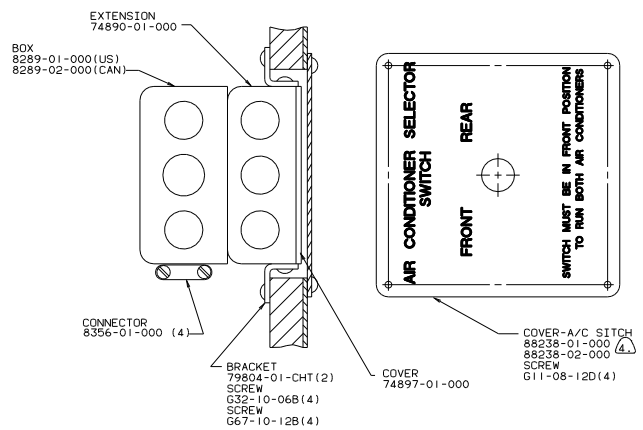
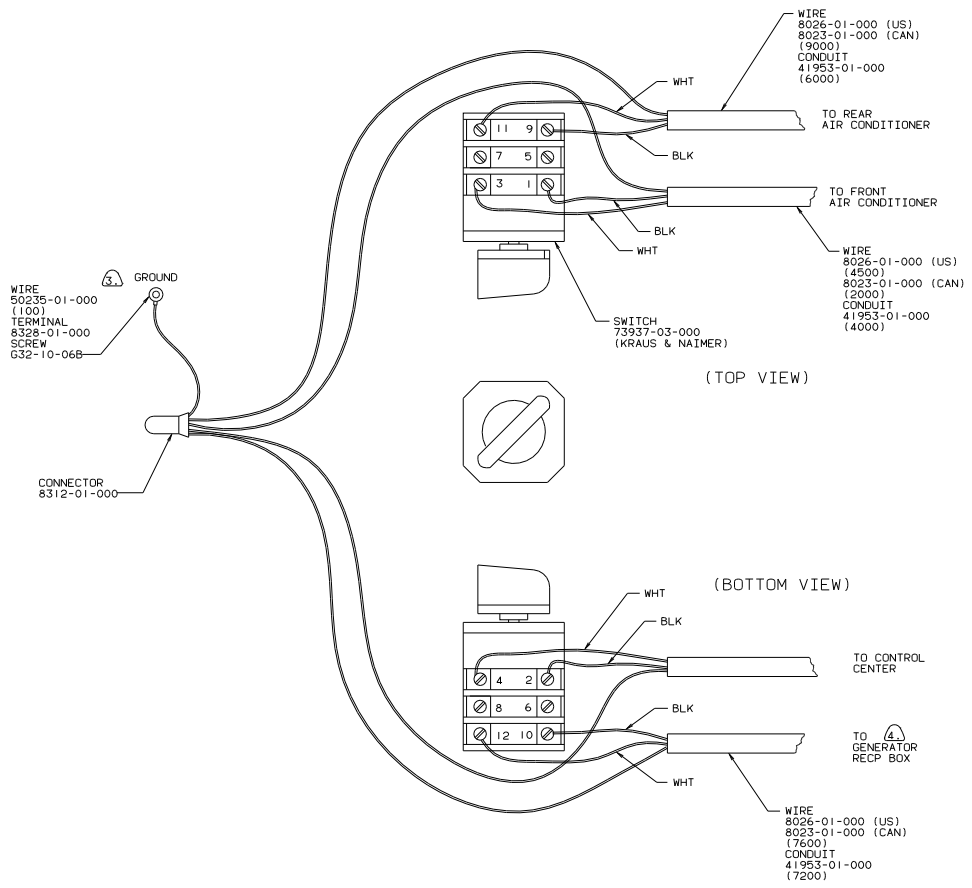
- BOX EXTERIOR 93767-02-CHT (3)
- RECP 79293-01-CHT
- BOX 58049-01-000
- WIRE 50235-01-000 (150)
- TERMINAL 8328-01-000
- SCREW G11-10-12U (4)
- G11-08-08B (4)
- G32-10-06B

- NOTES:
- (6) USE WITH REFRIGERATOR WITH ICE MAKER ONLY.
  - (5) COVER WITH CONDUIT 41953-01-000 IN THIS AREA.
  - (4) LOCATE TOP OF RECP 350 ABOVE SELF.
  - (3) SEAL WITH BEDDING COMPOUND 89639-01-000.
  - (2) WIRE IN FLOOR.
  - (1) WIRE IN ROOF.

TITLE: WIRING INSTL-BODY	
30 NET SCALE DRAWING	FILE NO: 97545
SHEET 3 OF 18	1 E



- ⑤ TWO GROUND WIRES UNDER ONE GROUND SCREW IS ACCEPTABLE.
- ④ SOLDER DIP BOTH ENDS OF WIRE.
- ③ USE WITH BLENDER.
- ② USE WITHOUT BLENDER.
- ① ALL GROUND WIRES TO BE COVERED WITH TUBING 8041-02-000.



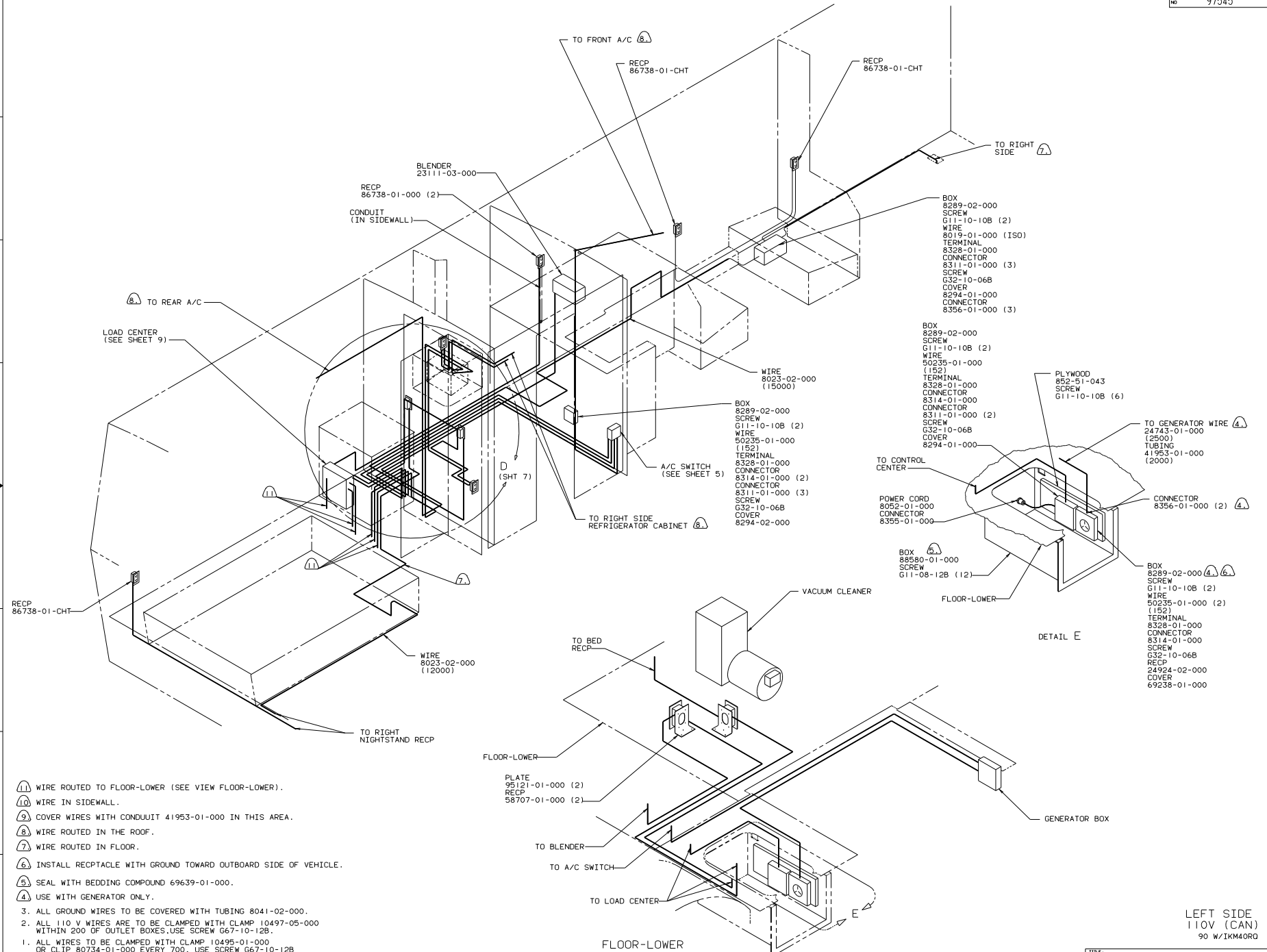
TOP VIEW OF BOX

- NOTES:
- ③ USE WITH 6500 WATT GENERATOR.
  - ② ALL GROUND WIRES TO BE COVERED WITH TUBING 8041-02-000.
  - ① FASTEN SWITCH TO COVER 74897-01-000 BEFORE FASTENING COVER TO BOX.

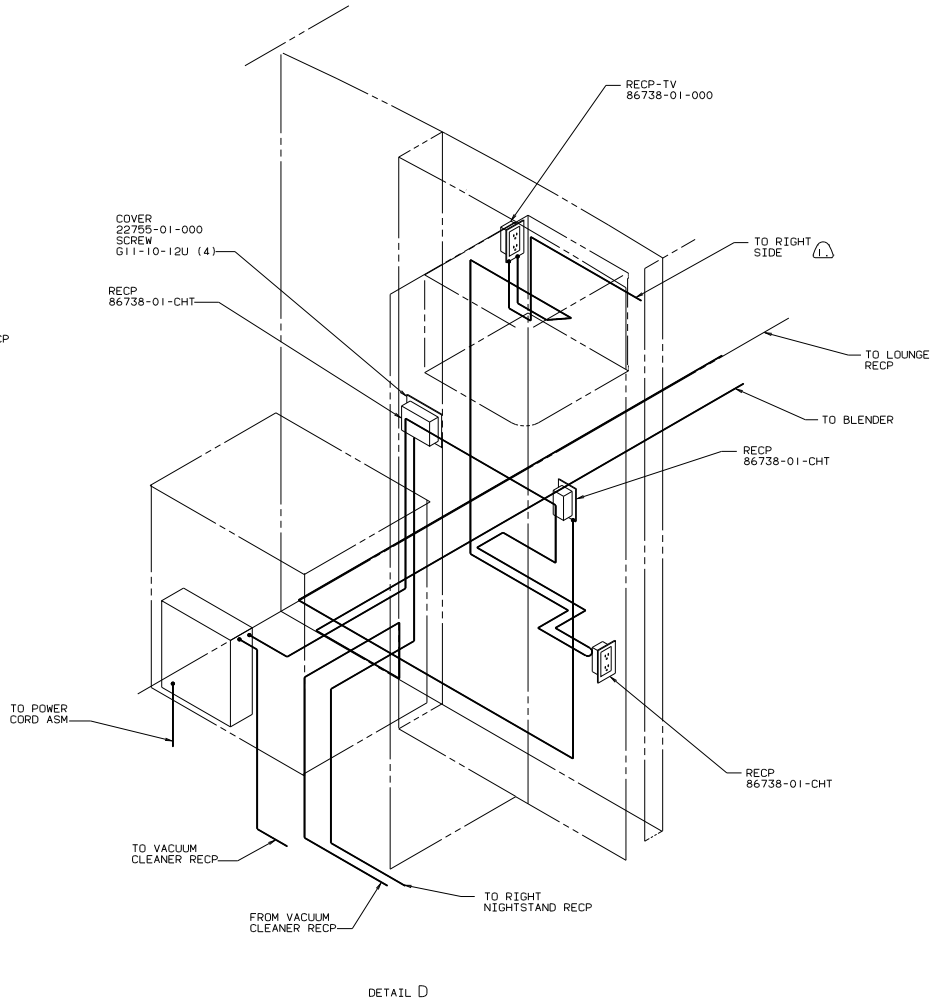
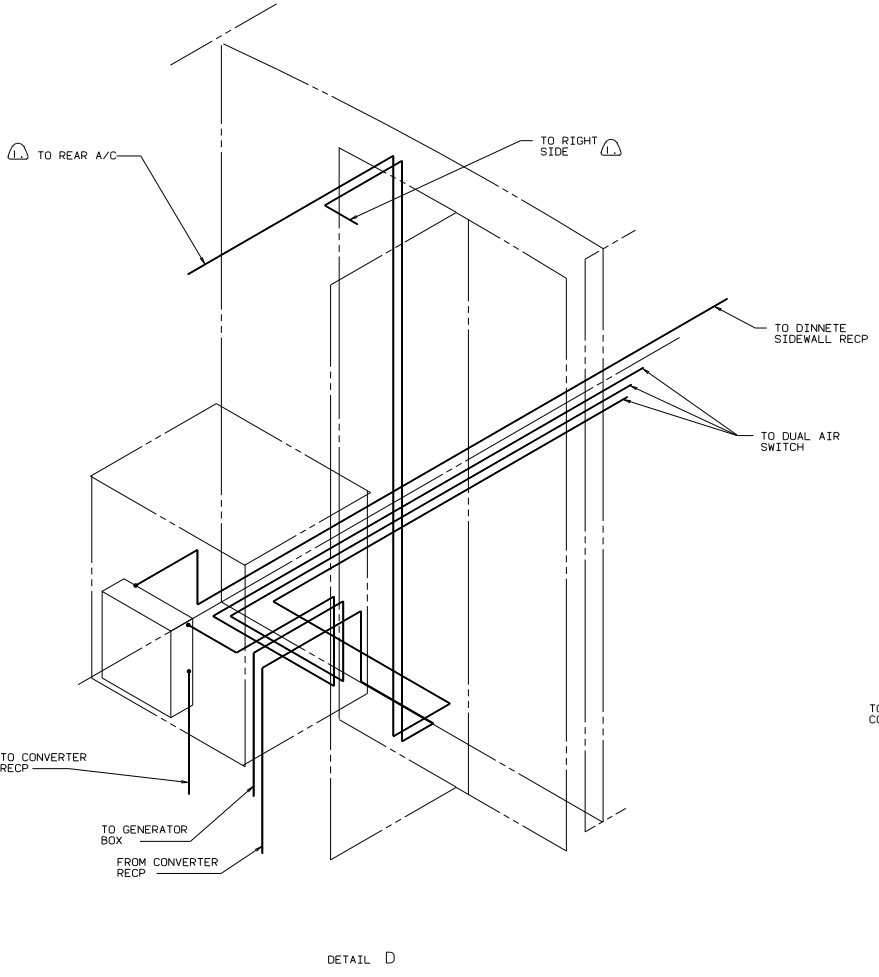
DUAL AIR SWITCH  
110 V (US/CAN)

90 W/IKM40RD

TITLE		97545	
WIRING INSTL-BODY (US)			
50 MIL SCALE DRAWING	11	18	1
SHEET 5	OF 18	1	1



- ① WIRE ROUTED TO FLOOR-LOWER (SEE VIEW FLOOR-LOWER).
  - ⑩ WIRE IN SIDEWALL.
  - ⑨ COVER WIRES WITH CONDUIT 41953-01-000 IN THIS AREA.
  - ⑧ WIRE ROUTED IN THE ROOF.
  - ⑦ WIRE ROUTED IN FLOOR.
  - ⑥ INSTALL RECPTACLE WITH GROUND TOWARD OUTBOARD SIDE OF VEHICLE.
  - ⑤ SEAL WITH BEDDING COMPOUND 69639-01-000.
  - ④ USE WITH GENERATOR ONLY.
3. ALL GROUND WIRES TO BE COVERED WITH TUBING 8041-02-000.
  2. ALL 110 V WIRES ARE TO BE CLAMPED WITH CLAMP 10497-05-000 WITHIN 200 OF OUTLET BOXES. USE SCREW G67-10-12B.
  1. ALL WIRES TO BE CLAMPED WITH CLAMP 10495-01-000 OR CLIP 80734-01-000 EVERY 700. USE SCREW G67-10-12B UNLESS OTHERWISE SPECIFIED.

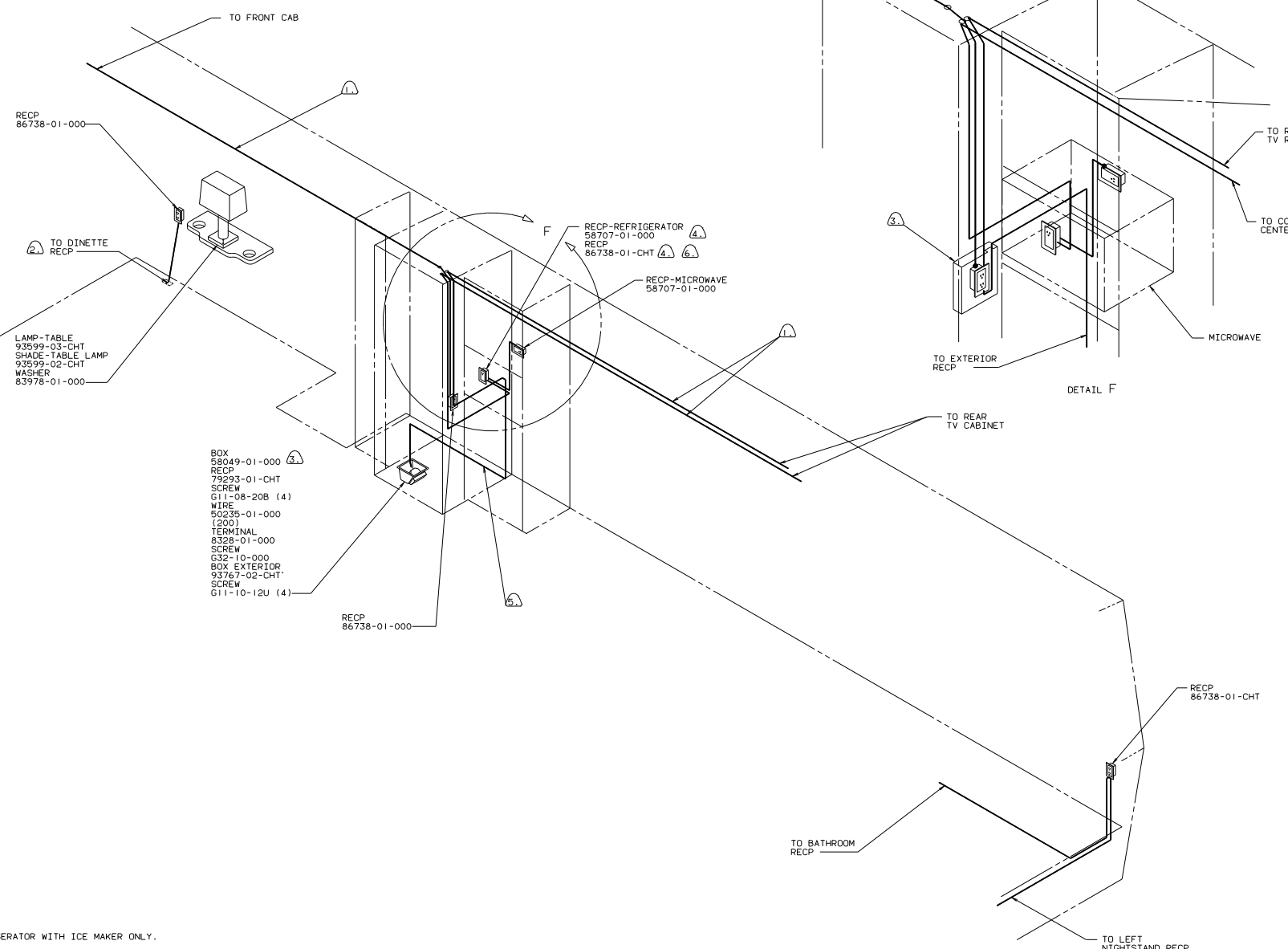


WIRE ROUTED IN ROOF.

NOTES:

LEFT SIDE  
110V (CAN)  
90 W/IKM4ORG

TITLE: WIRING INSTL-BODY	
30 NET SCALE DRAWING	FILE NO 97545
SHEET 7 OF 18	1 E



RECP  
86738-01-000

TO DINETTE  
RECP

LAMP-TABLE  
93599-03-CHT  
SHADE-TABLE LAMP  
93599-02-CHT  
WASHER  
83978-01-000

BOX  
58049-01-000  
RECP  
79293-01-CHT  
SCREW  
G11-08-20B (4)  
WIRE  
50235-01-000  
(200)  
TERMINAL  
8328-01-000  
SCREW  
G32-10-000  
BOX EXTERIOR  
93767-02-CHT  
SCREW  
G11-10-12U (4)

RECP  
86738-01-000

RECP-REFRIGERATOR  
58707-01-000  
RECP  
86738-01-CHT

RECP-MICROWAVE  
58707-01-000

TO EXTERIOR  
RECP

DETAIL F

TO REAR  
TV CABINET

TO BATHROOM  
RECP

RECP  
86738-01-CHT

TO LEFT  
NIGHTSTAND RECP

TO REAR  
TV RECP  
TO CONTROL  
CENTER

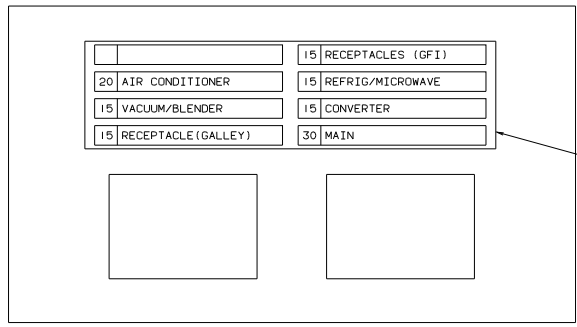
- NOTES:
- ⑥ USE WITH REFRIGERATOR WITH ICE MAKER ONLY.
  - ⑤ COVER WITH CONDUIT 41953-01-000 IN THIS AREA.
  - ④ LOCATE TOP OF RECP 350 ABOVE SELF.
  - ③ SEAL WITH BEDDING COMPOUND 89639-01-000.
  - ② WIRE IN FLOOR.
  - ① WIRE IN ROOF.

RIGHT SIDE  
110V (CAN)

90 W/IKM40R0

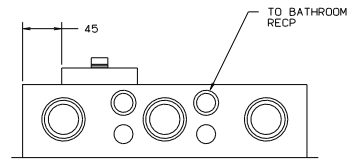
TITLE: WIRING INSTL-BODY	
30 NET SCALE DRAWING	FILE NO
SHEET 8 OF 18	97545



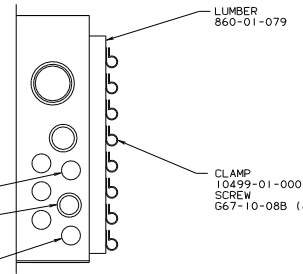


FRONT COVER

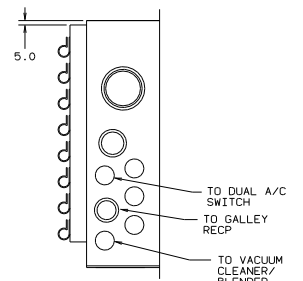
LABEL  
95720-03-000 (3) (4)  
95720-04-000 (2)



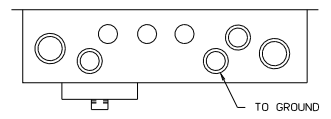
TOP VIEW OF LOAD CENTER



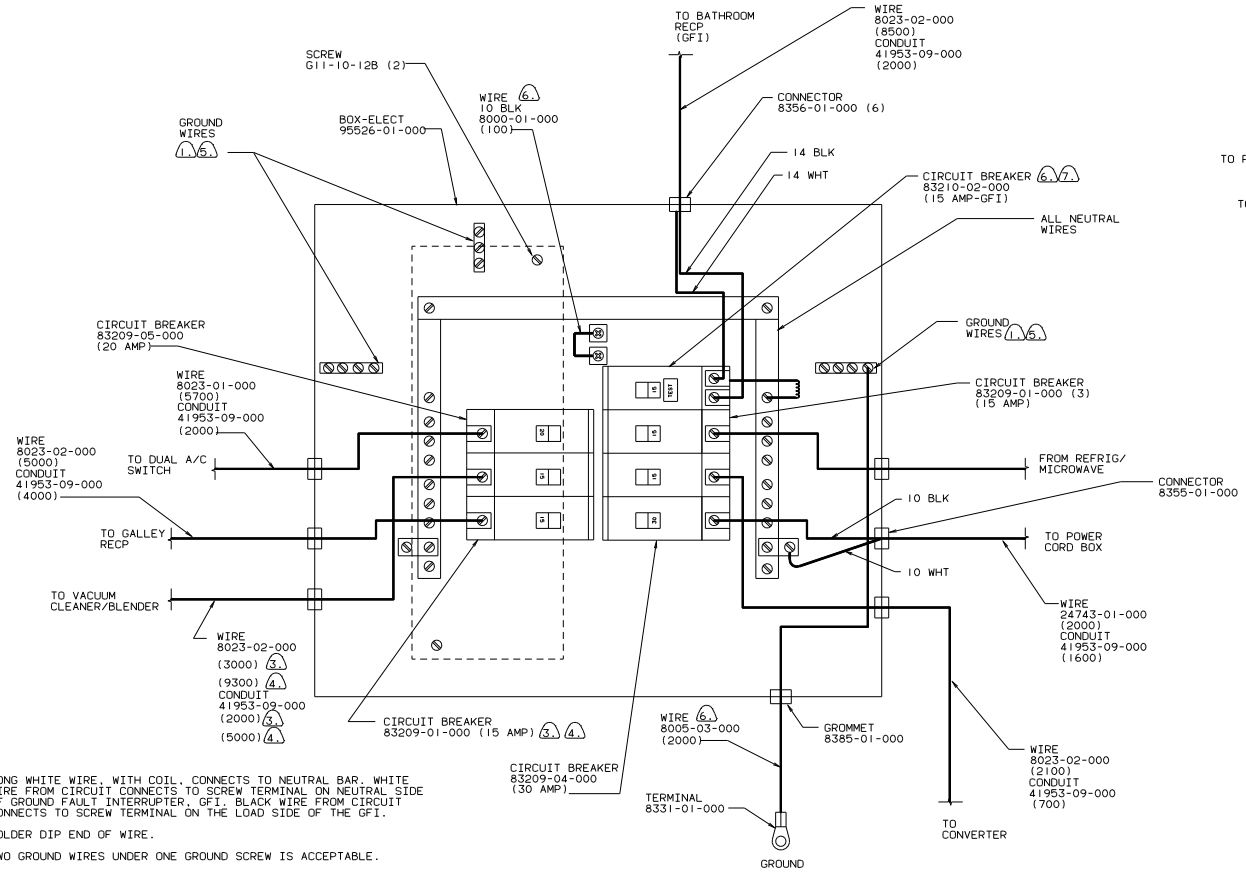
RIGHT SIDE OF LOAD CENTER



LEFT SIDE OF LOAD CENTER



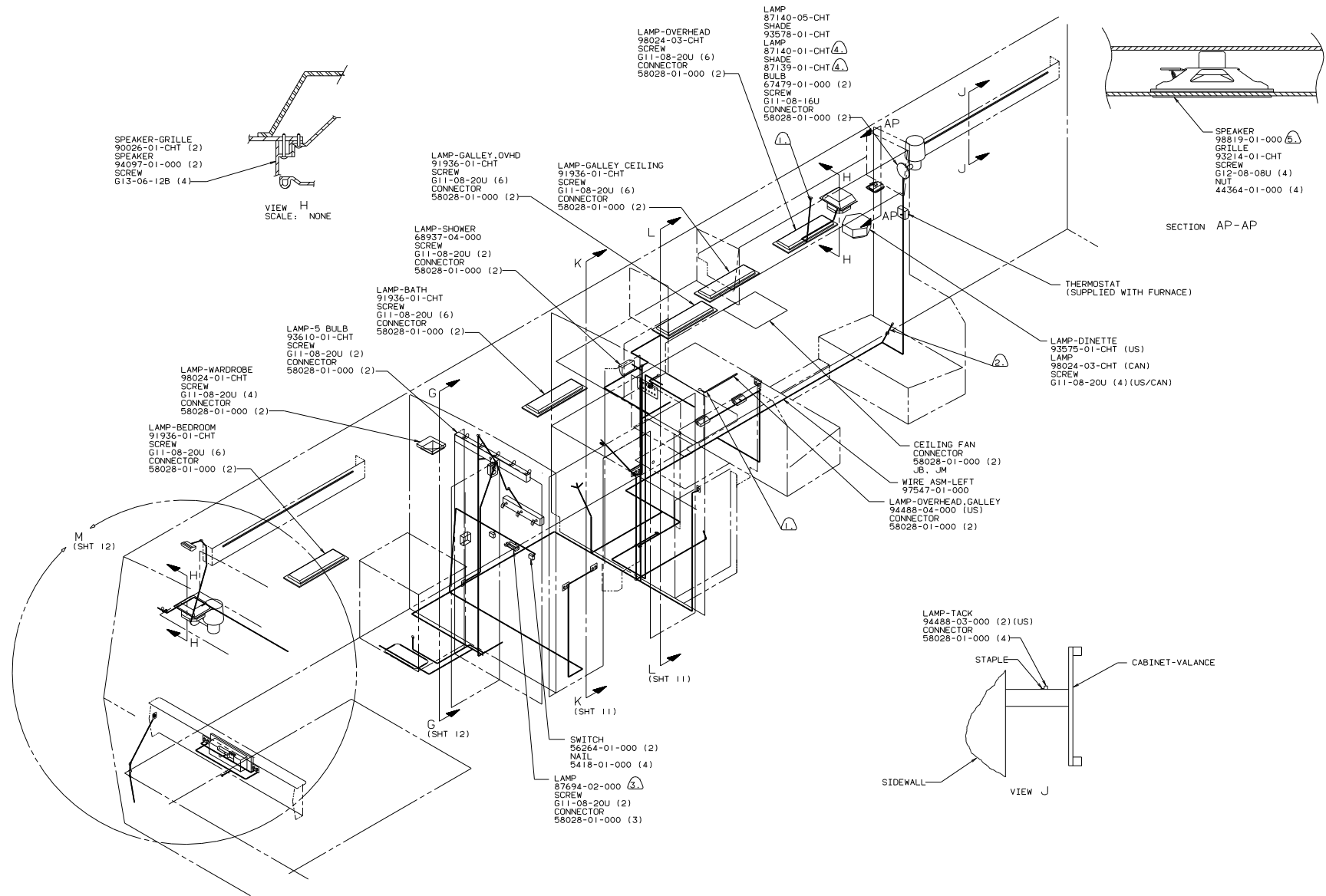
BOTTOM VIEW OF LOAD CENTER



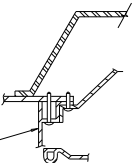
- (7) LONG WHITE WIRE, WITH COIL. CONNECTS TO NEUTRAL BAR. WHITE WIRE FROM CIRCUIT CONNECTS TO SCREW TERMINAL ON NEUTRAL SIDE OF GROUND FAULT INTERRUPTER. GFI. BLACK WIRE FROM CIRCUIT CONNECTS TO SCREW TERMINAL ON THE LOAD SIDE OF THE GFI.
- (6) SOLDER DIP END OF WIRE.
- (5) TWO GROUND WIRES UNDER ONE GROUND SCREW IS ACCEPTABLE.
- (4) USE WITH BLENDER.
- (3) USE WITH VACUUM CLEANER.
- (2) USE WITHOUT BLENDER AND VACUUM CLEANER.
- (1) ALL GROUND WIRES TO BE COVERED WITH TUBING 8041-02-000.

CONTROL CENTER  
110 V (CAN)  
90 W/IKM40R0

TITLE	WIRING INSTL-BODY
30 MET SCALE DRAWING	FILE NO
SHEET 9 OF 18	1 E
	97545



SPEAKER-GRILLE  
90026-01-CHT (2)  
SPEAKER  
94097-01-000 (2)  
SCREW  
613-06-12B (4)



VIEW H  
SCALE: NONE

LAMP-GALLEY, OVHD  
91936-01-CHT  
SCREW  
G11-08-20U (6)  
CONNECTOR  
58028-01-000 (2)

LAMP-GALLEY CEILING  
91936-01-CHT  
SCREW  
G11-08-20U (6)  
CONNECTOR  
58028-01-000 (2)

LAMP-SHOWER  
68937-04-000  
SCREW  
G11-08-20U (2)  
CONNECTOR  
58028-01-000 (2)

LAMP-BATH  
91936-01-CHT  
SCREW  
G11-08-20U (6)  
CONNECTOR  
58028-01-000 (2)

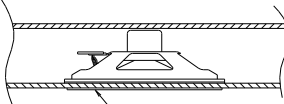
LAMP-5 BULB  
93610-01-CHT  
SCREW  
G11-08-20U (2)  
CONNECTOR  
58028-01-000 (2)

LAMP-WARDROBE  
98024-01-CHT  
SCREW  
G11-08-20U (4)  
CONNECTOR  
58028-01-000 (2)

LAMP-BEDROOM  
91936-01-CHT  
SCREW  
G11-08-20U (6)  
CONNECTOR  
58028-01-000 (2)

LAMP-OVERHEAD  
98024-03-CHT  
SCREW  
G11-08-20U (6)  
CONNECTOR  
58028-01-000 (2)

LAMP  
87140-05-CHT  
SHADE  
93578-01-CHT  
LAMP  
87140-01-CHT (4)  
SHADE  
87133-01-CHT (4)  
SCREW  
67479-01-000 (2)  
BULB  
G11-08-16U  
CONNECTOR  
58028-01-000 (2)



SPEAKER  
98819-01-000 (4)  
GRILLE  
93214-01-CHT  
SCREW  
G12-08-08U (4)  
NUT  
44364-01-000 (4)

SECTION AP-AP

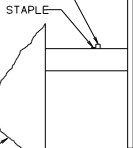
THERMOSTAT  
(SUPPLIED WITH FURNACE)

LAMP-DINETTE  
93575-01-CHT (US)  
LAMP  
98024-03-CHT (CAN)  
SCREW  
G11-08-20U (4) (US/CAN)

CEILING FAN  
CONNECTOR  
58028-01-000 (2)  
JB, JM

WIRE ASM-LEFT  
97547-01-000  
LAMP-OVERHEAD, GALLEY  
94488-04-000 (US)  
CONNECTOR  
58028-01-000 (2)

LAMP-TACK  
94488-03-000 (2) (US)  
CONNECTOR  
58028-01-000 (4)



VIEW J

SWITCH  
56264-01-000 (2)  
NAIL  
5418-01-000 (4)

LAMP  
87694-02-000 (4)  
SCREW  
G11-08-20U (2)  
CONNECTOR  
58028-01-000 (3)

- NOTES:
- ⑤ USE WITH TV AND EXTERNAL SPEAKERS.
  - ④ USE WITH COLOR OPTION (AB5).
  - ③ SPLICE NF TO WHITE WIRE, JF TO CENTER BLACK WIRE. PG TO OUTSIDE BLACK WIRE.
  - ② WIRE IN SIDEWALL.
  - ① WIRE IN ROOF.

LEFT SIDE  
12V (US/CAN)  
90 W/IKM40RQ

TITLE: WIRING INSTL-BODY	
30 NET SCALE DRAWING	FILE NO
SHEET 10 OF 18	97545



WARDROBE LAMP  
87694-01-000  
SCREW  
G11-08-20U (2)  
CONNECTOR  
58028-01-000 (2)



LAMP 93576-01-CHT (US)  
LAMP-SHADE 87139-01-CHT (US)  
BULB 67479-01-000 (2) (US)  
SCREW G11-10-24P (2) (US)  
LAMP 98024-01-CHT (CAN)  
SCREW G11-08-20U (4) (CAN)  
CONNECTOR 58028-01-000 (2)

DETAIL T

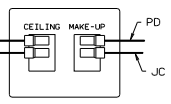
PLATE-WALL TV 76319-09-000  
CONNECTOR 58028-01-000 (2)

THERMOSTAT (SUPPLIED WITH FURNACE)

PLATE-SWITCH 98351-02-CHT  
SWITCH 89308-01-CHT (2)  
SPACER 95188-01-CHT  
SCREW G11-06-16J (2)

TO RIGHT SPEAKER  
PLATE-SWITCH 98351-02-CHT  
SWITCH 89308-02-CHT  
SWITCH-BLANK 89303-01-CHT  
SCREW G11-06-10J (2)

RADIO-REAR 97153-01-000  
CONNECTOR 58028-01-000  
SCREW (SUPPLIED W/STEREO)  
PLATE-SWITCH 98351-02-CHT  
SWITCH 89308-02-CHT (2)  
SCREW G11-06-10J (2)



DETAIL U

TO FURNACE CONNECTOR 58028-01-000 (4)  
JE TO RED  
JK TO BLU  
JL TO BLU  
NE TO YEL

WIRE ASM-CHASSIS, REAR

LAMP-3 BULB 82169-01-000  
SCREW G11-08-20U (2)  
CONNECTOR 58028-01-000 (2)

SWITCH 89308-01-CHT (2)  
89308-02-CHT  
PLATE-SWITCH 98351-03-CHT  
SCREW G11-06-16J (2)  
SPACER 91588-02-CHT

SWITCH 89308-02-CHT (2)  
PLATE-SWITCH 98351-02-CHT  
SPACER 95188-01-CHT  
SCREW G11-06-16J (2)

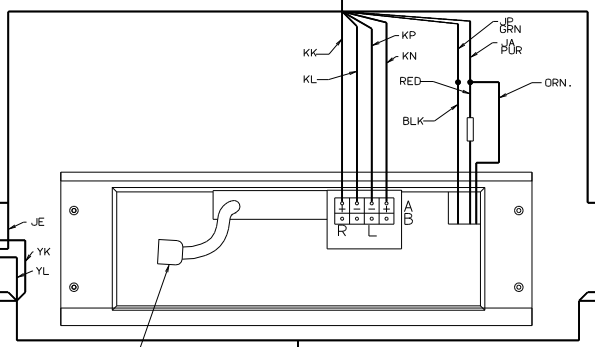
VIEW G

WIRE ASM-CHASSIS, REAR

SWITCH-GENERATOR 24976-01-000  
SWITCH-BLANK 96241-03-000  
SWITCH-PLATE, GEN 95185-09-CHT  
SCREW G11-06-10J (2)

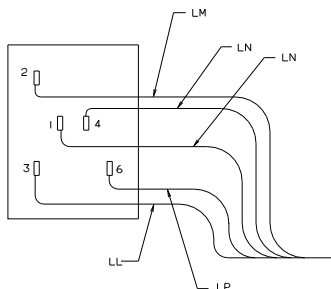
VIEW M

WIRE ASM-REAR, UPPER

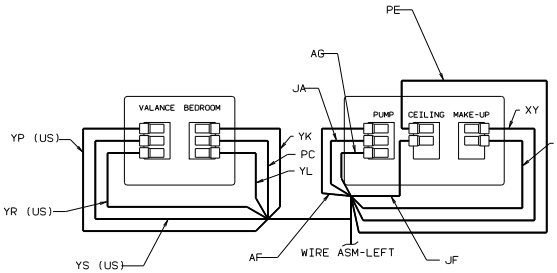


WIRE ASM-REAR, LOWER

DETAIL W



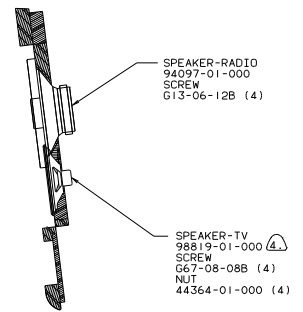
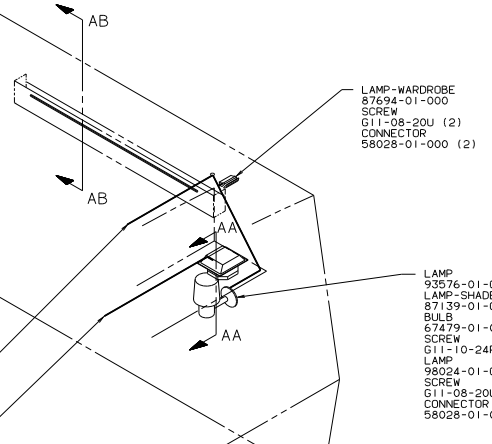
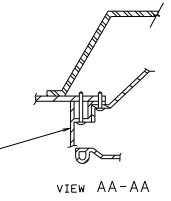
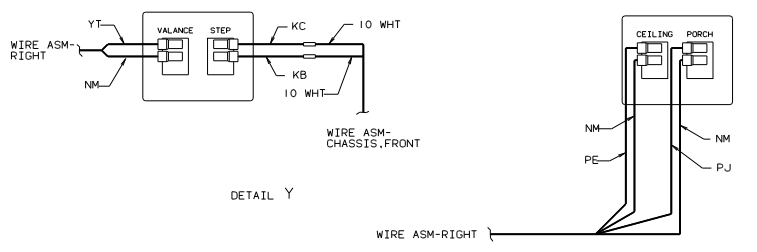
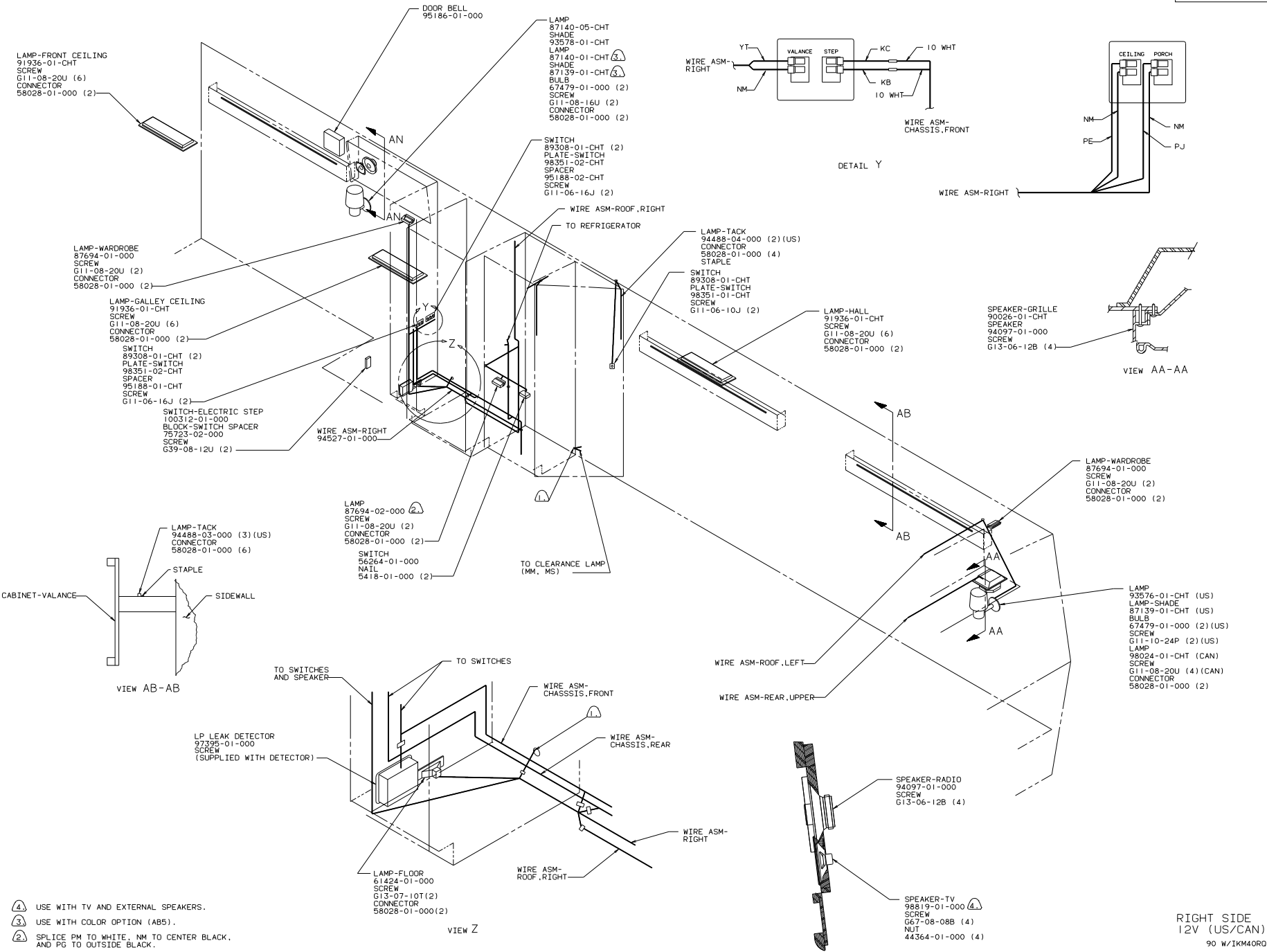
DETAIL X



DETAIL V

LEFT SIDE  
12V (US/CAN)  
90 W/IKM4ORD

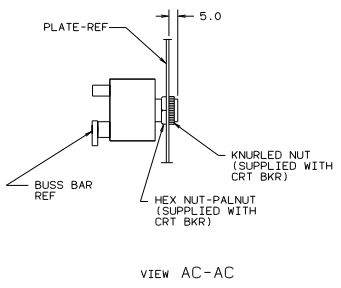
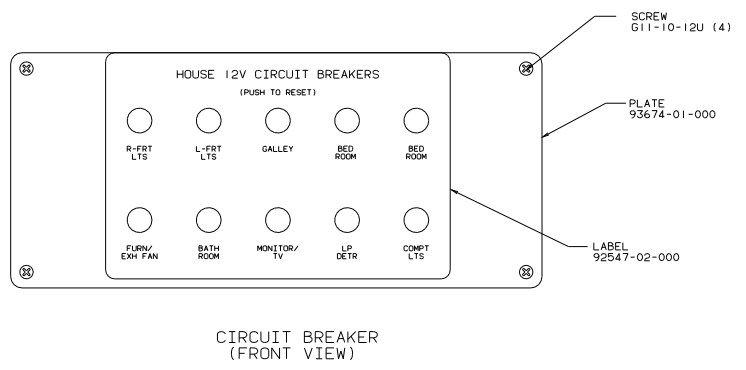
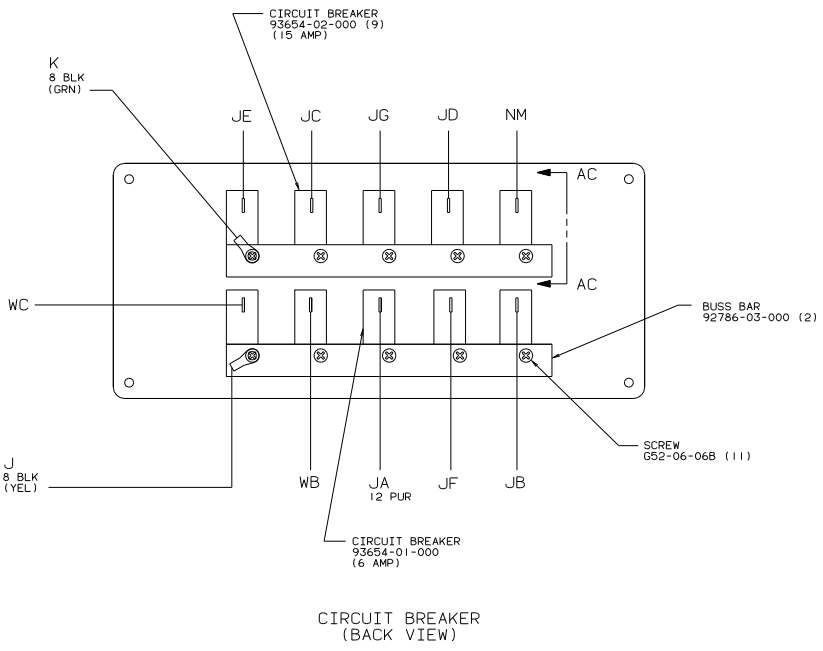
- ④ USE WITHOUT GENERATOR.
- ③ USE WITH GENERATOR.
- ② WIRE IN BACKWALL.
- ① WIRE IN ROOF.



- NOTES:
- ④ USE WITH TV AND EXTERNAL SPEAKERS.
  - ③ USE WITH COLOR OPTION (ABS).
  - ② SPLICE PM TO WHITE, NM TO CENTER BLACK, AND PG TO OUTSIDE BLACK.
  - ① WIRE IN THE SIDEWALL.

RIGHT SIDE  
12V (US/CAN)  
90 W/IKM40RQ

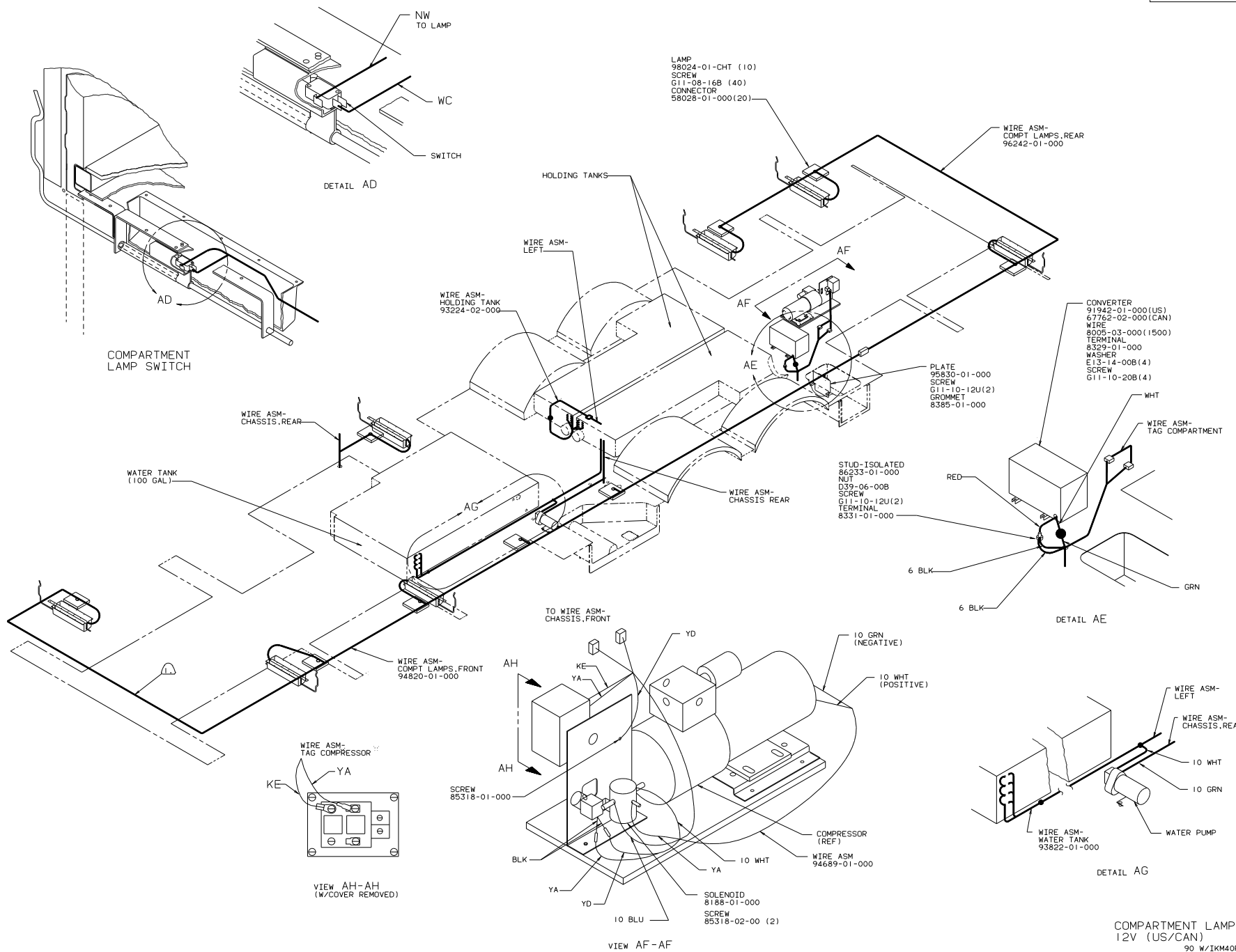
TITLE: WIRING INSTL-BODY	
30 NET SCALE DRAWING	FILE NO
SHEET 13 OF 18	1 E
97545	



CONTROL CENTER  
12V (US/CAN)

90 W/IKM40RD

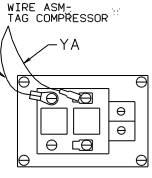
TITLE		WIRING INSTL-BODY	
30 NET SCALE DRAWING	FILE NO	97545	
SHEET 14 OF 18	DATE		



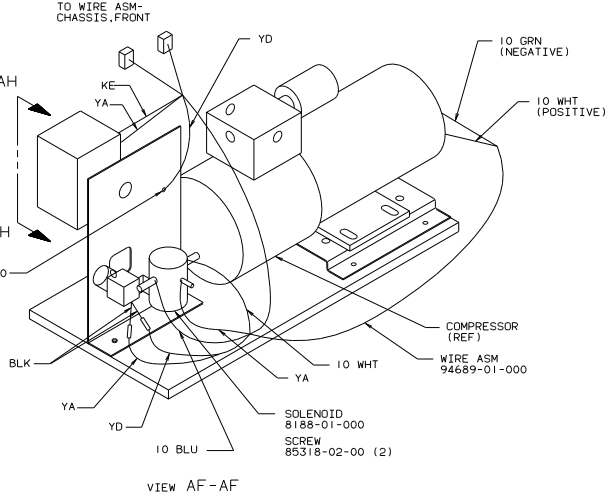
LAMP  
98024-01-CHT (10)  
SCREW  
G11-08-16B (40)  
CONNECTOR  
58028-01-000(20)

CONVERTER  
91942-01-000(US)  
67762-02-000(CAN)  
WIRE  
8005-03-000(1500)  
TERMINAL  
8329-01-000  
WASHER  
E13-14-00B(4)  
SCREW  
G11-10-20B(4)

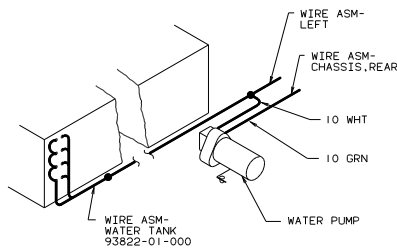
STUD-ISOLATED  
86233-01-000  
NUT  
D39-06-00B  
SCREW  
G11-10-12U(2)  
TERMINAL  
8331-01-000



VIEW AH-AH  
(W/COVER REMOVED)



VIEW AF-AF



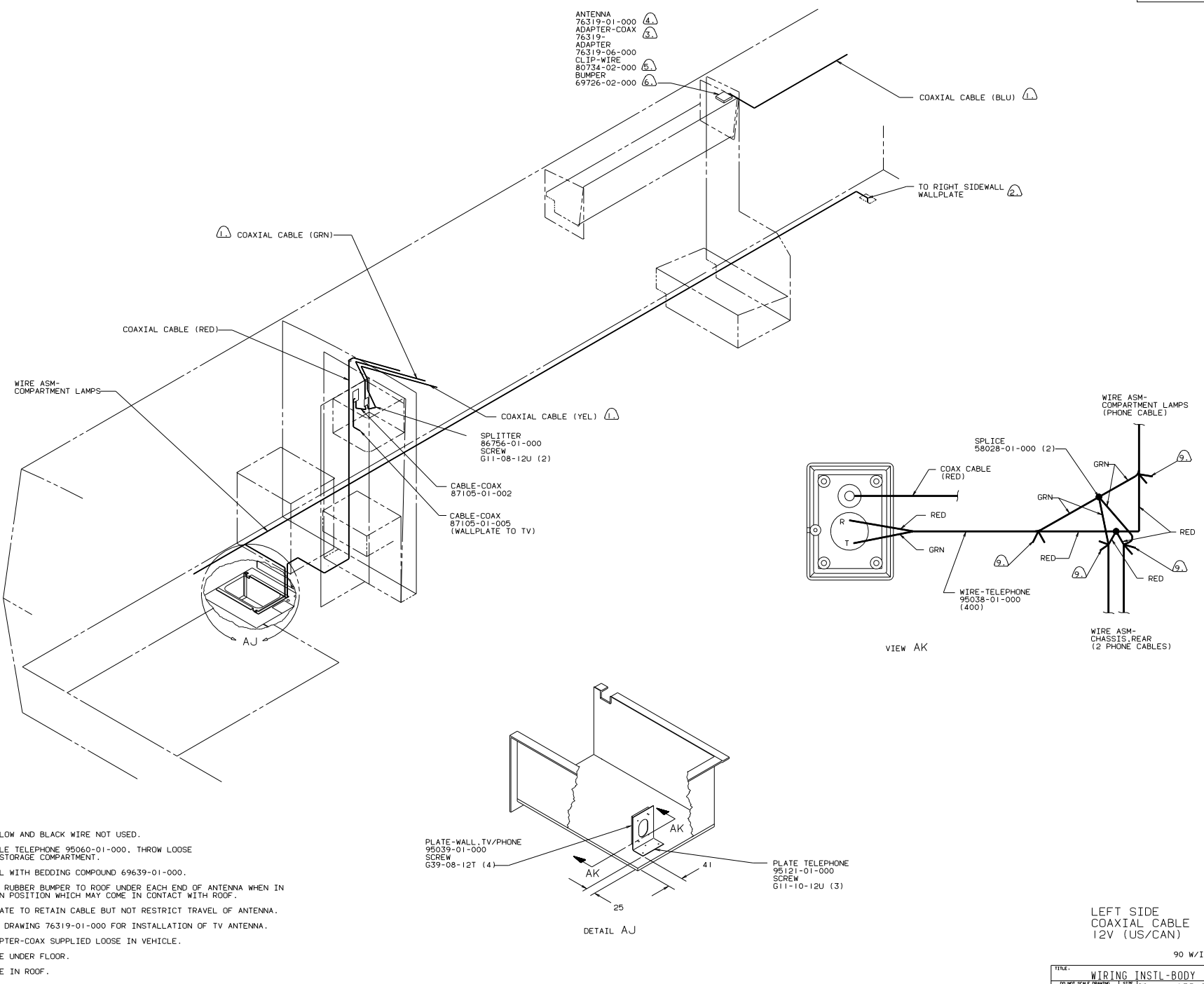
DETAIL AG

COMPARTMENT LAMPS  
12V (US/CAN)  
90 W/1KM40RD

TITLE: WIRING INSTL-BODY	
30 NET SCALE DRAWING	FILE ENG
SHEET 15 OF 18	1 E
97545	

ROUTE UNDER FLOOR.

- ANTENNA 76319-01-000 (4)
- ADAPTER-COAX 76319-06-000 (3)
- ADAPTER 76319-06-000 (3)
- CLIP-WIRE 80734-02-000 (5)
- BUMPER 69726-02-000 (6)



- (9) YELLOW AND BLACK WIRE NOT USED.
- 8. CABLE TELEPHONE 95060-01-000. THROW LOOSE IN STORAGE COMPARTMENT.
- (7) SEAL WITH BEDDING COMPOUND 69639-01-000.
- (6) ADD RUBBER BUMPER TO ROOF UNDER EACH END OF ANTENNA WHEN IN DOWN POSITION WHICH MAY COME IN CONTACT WITH ROOF.
- (5) LOCATE TO RETAIN CABLE BUT NOT RESTRICT TRAVEL OF ANTENNA.
- (4) SEE DRAWING 76319-01-000 FOR INSTALLATION OF TV ANTENNA.
- (3) ADAPTER-COAX SUPPLIED LOOSE IN VEHICLE.
- (2) WIRE UNDER FLOOR.
- (1) WIRE IN ROOF.

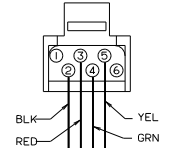


COAXIAL CABLE (GRN)  
COAXIAL CABLE (RED)

PLATE-WALL, TELEPHONE  
93253-01-CHT

WIRE ASM-COMPARTMENT, LAMPS  
(PHONE CABLE)

COAXIAL CABLE (YEL)



WIRE ASM-CHASSIS, REAR  
(PHONE CABLE)

VIEW AM

BOX-EXTERIOR  
(REF)

AL

WIRE ASM-CHASSIS, REAR  
(PHONE CABLE)

TO LEFT SIDE

COVER-EXT  
86783-01-CHT  
GASKET  
86783-02-CHT

CONNECTOR-COAX  
82134-01-000

PLATE-TELEPHONE  
93901-01-000

WASHER  
82135-01-000

NUT  
82136-01-000

HOUSING-TELEPHONE  
93254-01-000

COVER  
(SUPPLIED WITH HOUSING)

VIEW AL-AL

PLATE-WALL, TELEPHONE  
93253-01-CHT

WIRE ASM-CHASSIS, REAR  
(PHONE CORD)

TO LEFT SIDE

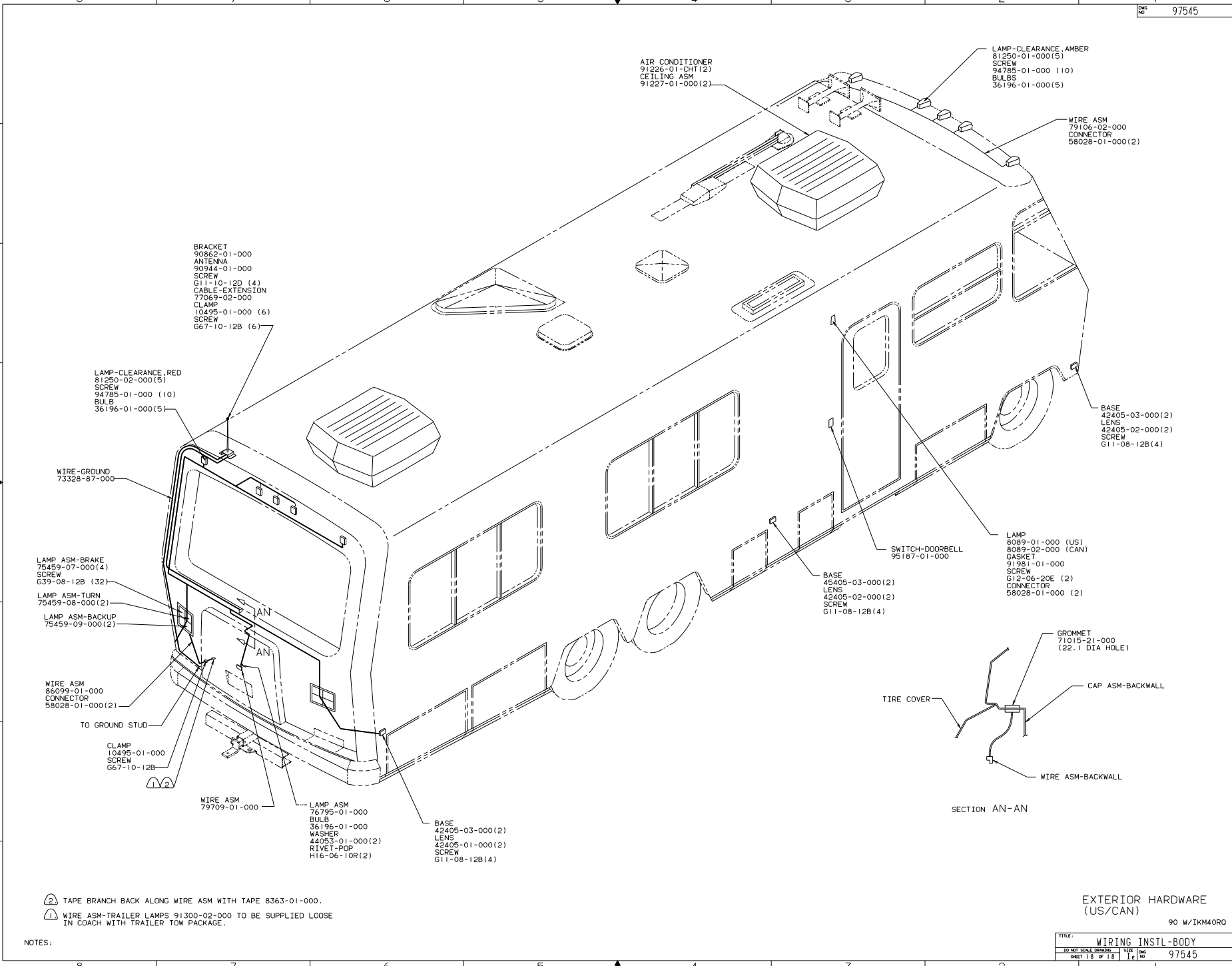
RIGHT SIDE  
COAXIAL CABLE  
12V (US/CAN)

90 W/IKM40R0

WIRE IN FLOOR.  
WIRE IN ROOF.

NOTES:

TITLE: WIRING INSTL-BODY	
30 NET SCALE DRAWING	FILE NO
SHEET 17 OF 18	97545



SECTION AN-AN

- Ⓜ TAPE BRANCH BACK ALONG WIRE ASM WITH TAPE 8363-01-000.
- Ⓜ WIRE ASM-TRAILER LAMPS 91300-02-000 TO BE SUPPLIED LOOSE IN COACH WITH TRAILER TOW PACKAGE.

NOTES:

EXTERIOR HARDWARE (US/CAN)

90 W/IKM409G

TITLE: WIRING INSTL-BODY	
30 NET SCALE DRAWING	SIZE 1/16
SHEET 18 OF 18	DWG NO 97545