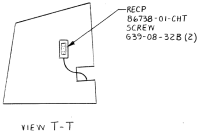
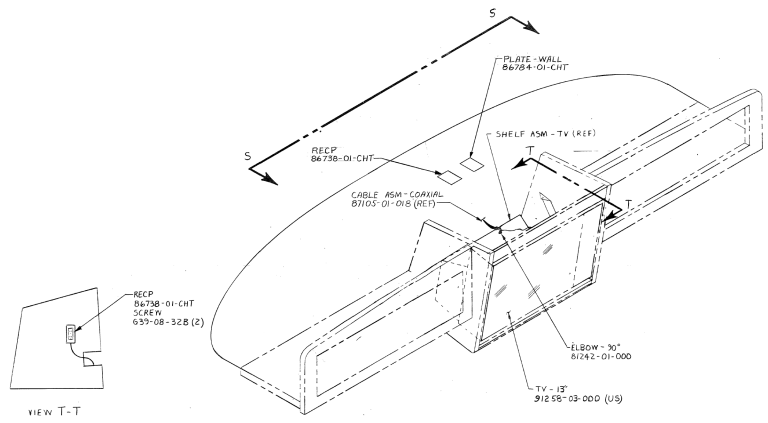


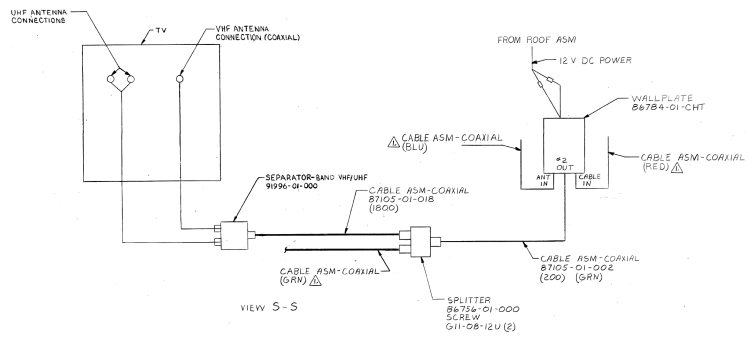
- ▲ USE WITH ELECTRIC MIRRORS ONLY.
- ▲ RLC 1090, WIREW/ CIRCUIT BREAKERS.
- ▲ USE WITH FOG LAMPS ONLY.
- ▲ USE WITH AIR HORNS ONLY.

NOTE 5:

TITLE		WIRING INSTL - FRONT END	
REV		REV	
REV 3	REV 3	REV 3	REV 3
METRIC		97456	



TV INSTALLATION



Δ CABLE ASM - MARKED WITH COLOR TAPE AS INDICATED.

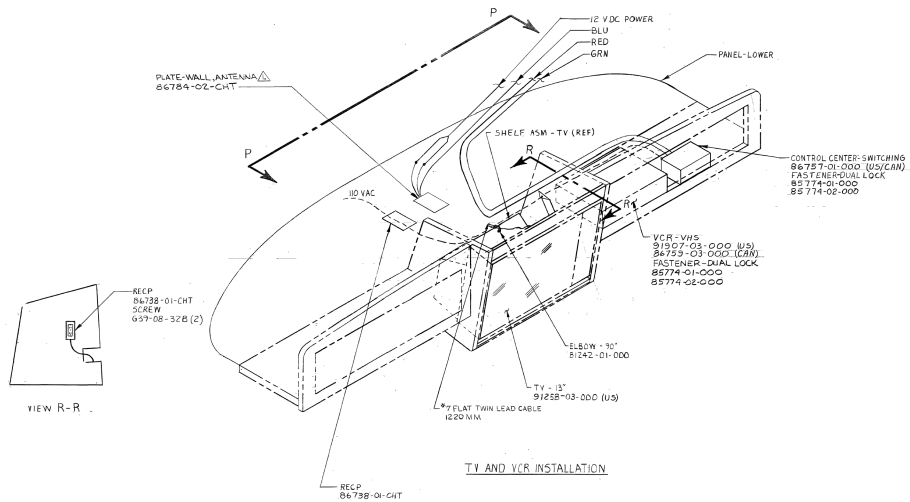
SHARP TV

WIRING INSTALLATION - FRONT END

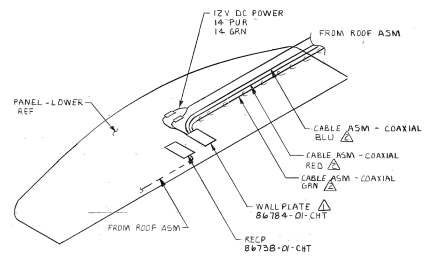
REV 000 - 00000000

SHEET 4 OF 9

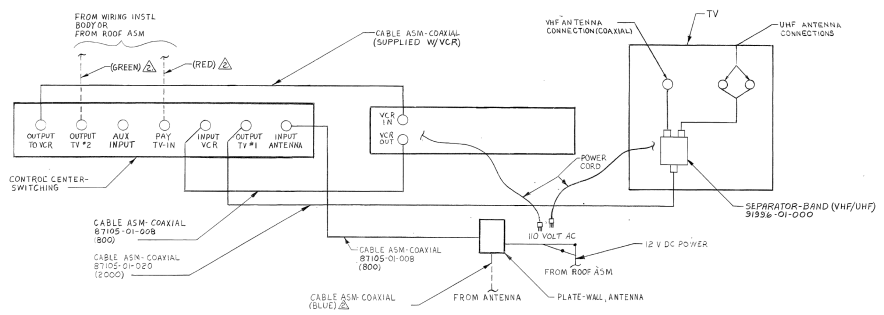
97456



TV AND VCR INSTALLATION



W/O TV AND VCR

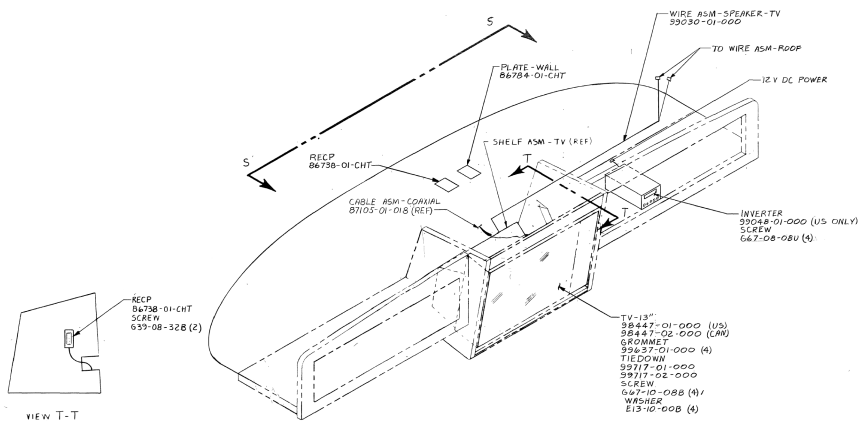


VIEW P-P

SHARP TV
SHARP VCR (U.S.)
GENERAL ELECTRIC VCR (CAN.)

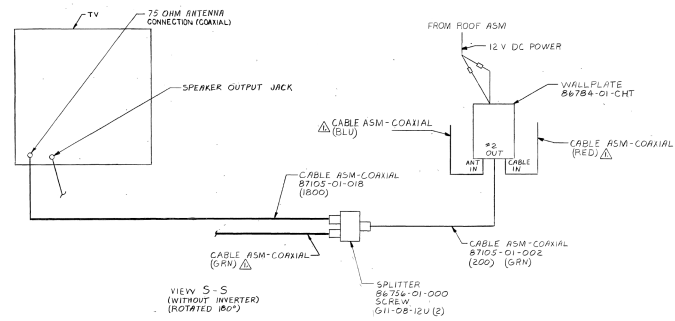
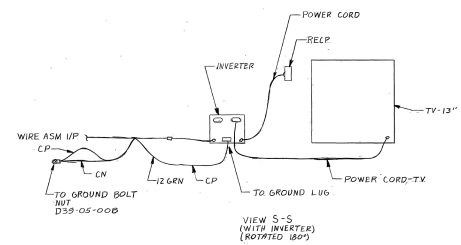
WIRING INSTALLATION - FRONT END
REV. 10/80
SHEET 5 OF 9

NOTE: CABLE ASM - MARKED WITH COLOR TAPE AS INDICATED.
USE WITH TV ANTENNA ONLY.

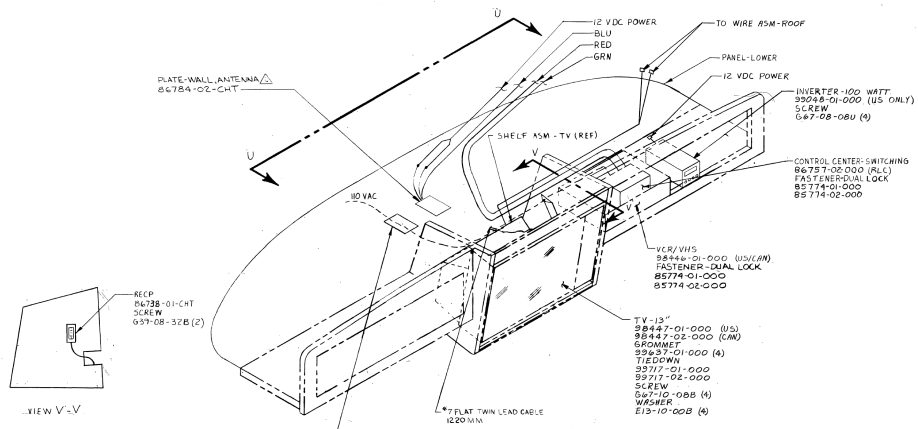


VIEW T-T

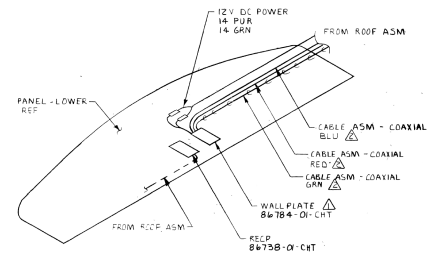
TV INSTALLATION



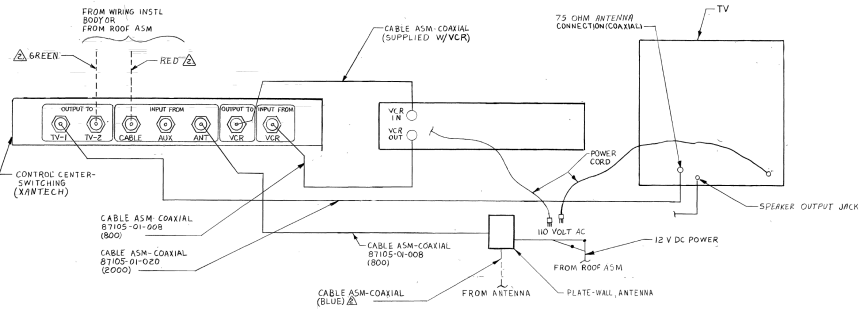
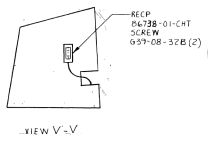
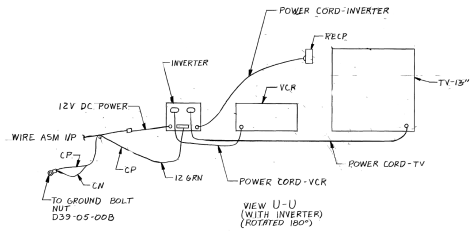
△ CABLE ASM - MARKED WITH COLOR TAPE AS INDICATED.



TV AND VCR AND INVERTER INSTALLATION



W/O TV AND VCR



VIEW U-U ROTATED 180°

MAGNAVOX TV
MAGNAVOX VCR
XANTECH SWITCHER

WIRING INSTALLATION - FRONT END	
REV	DATE
1	97456

NOTE: CABLE ASM - MARKED WITH COLOR TAPE AS INDICATED. USE WITH TV ANTENNA ONLY.

