

DETAIL VIEWS OF
PANEL S AND T

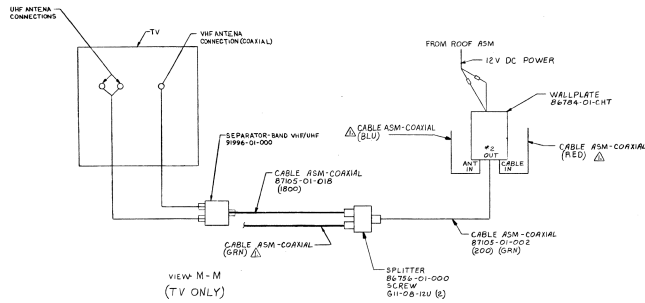
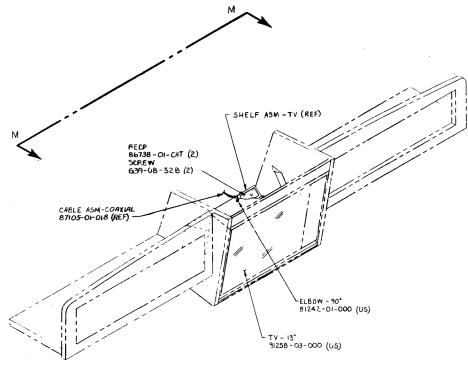
INSTRUMENT PANEL-CHEVY
(BACK VIEW)

NOT USED THIS MODEL.
 ⚠ REMOVE FROM IGNITION SWITCH HOUSING; REMOVE TERMINAL
 AND SPLICE RNK WIRE TO TAN/WHT WIRE.

NOTES:

EFI

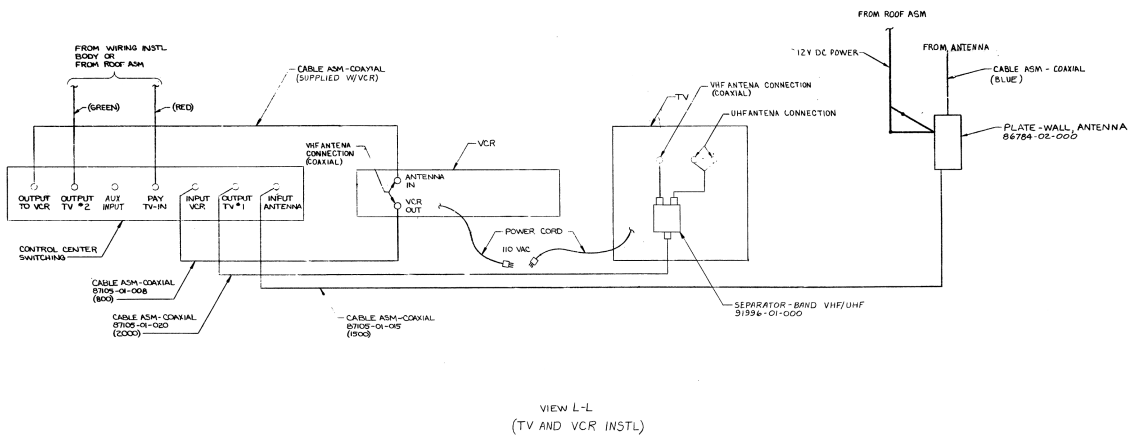
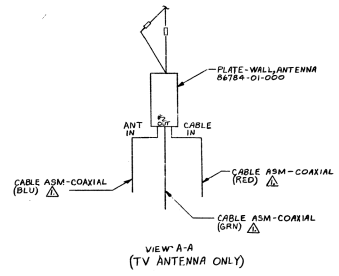
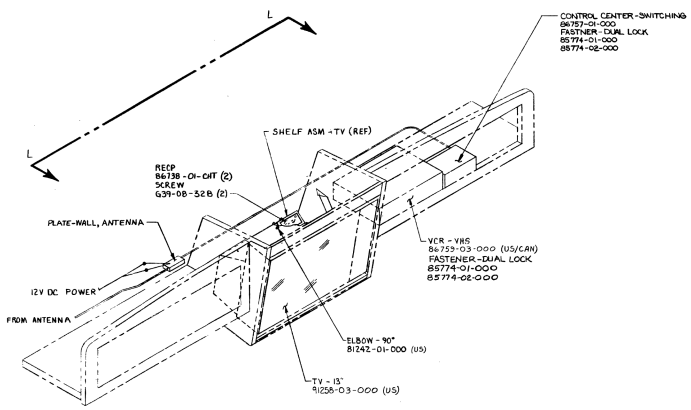
TITLE	WIRING INSTL-FRONT END
REV	REV 3 2/16
DATE	11/10
FIG NO	97454



NOTE: CABLE ASM-MARKED WITH COLOR TAPE AS INDICATED

SHARP TV

WIRING INSTALLATION - FRONT END PART NO. 974.5A REV. 12/97

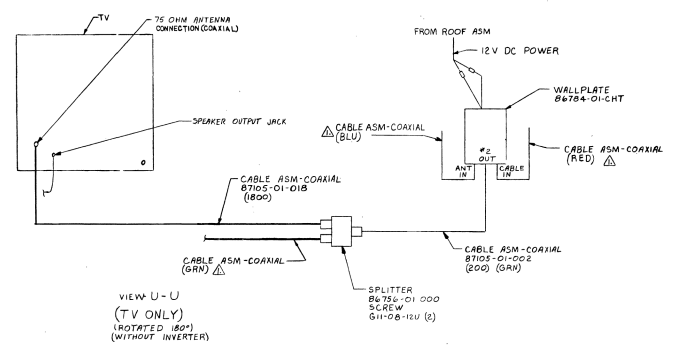
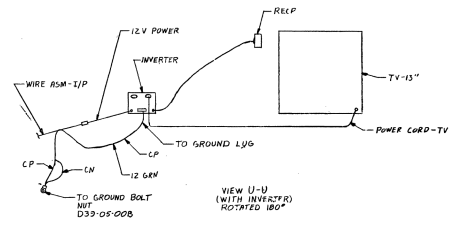
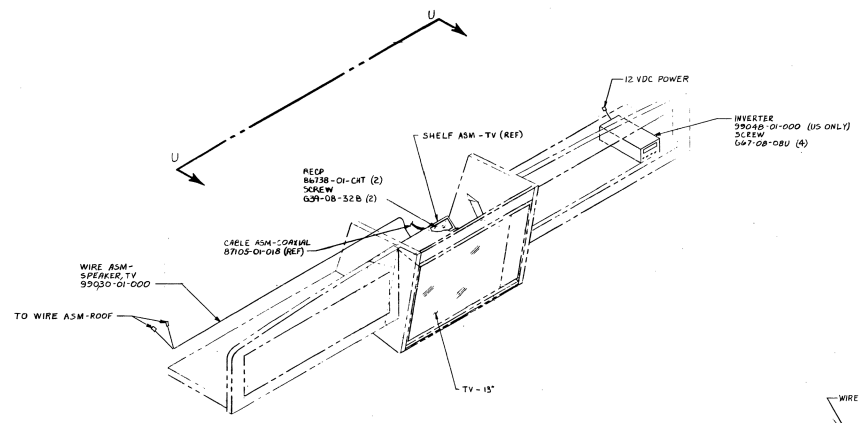


NOTE: CABLE ASM - MARKED WITH COLOR TAPE AS INDICATED

SHARP TV GENERAL ELECTRIC VCR

WIRING INSTALLATION - FRONT END

10 E 97454



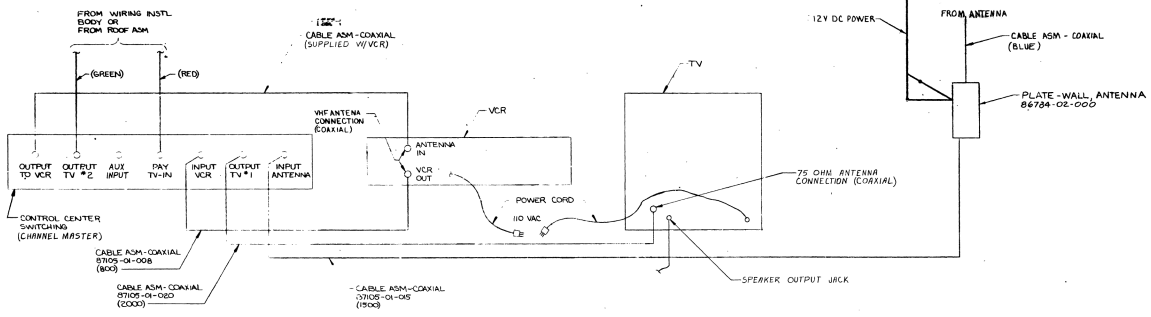
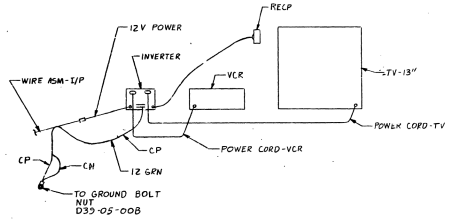
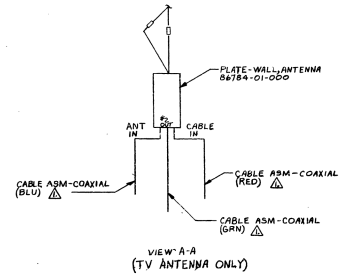
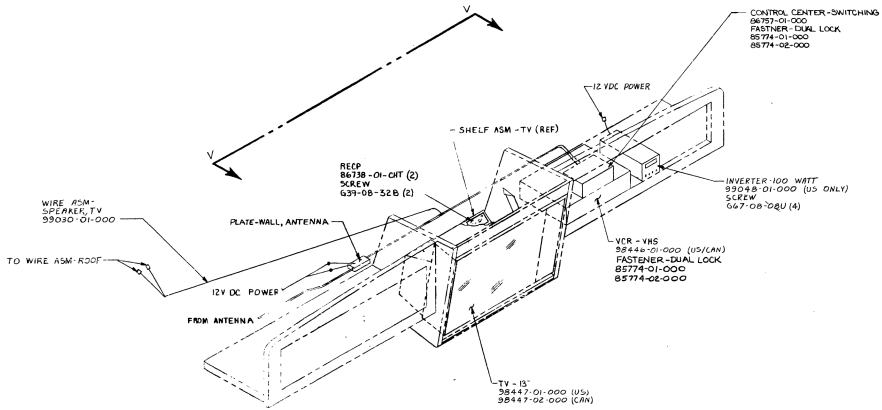
NOTE: Δ CABLE ASM- MARKED WITH COLOR TAPE AS INDICATED

MAGNOVOX TV

WIRING INSTALLATION
FRONT END

REV 10/10/00

97454



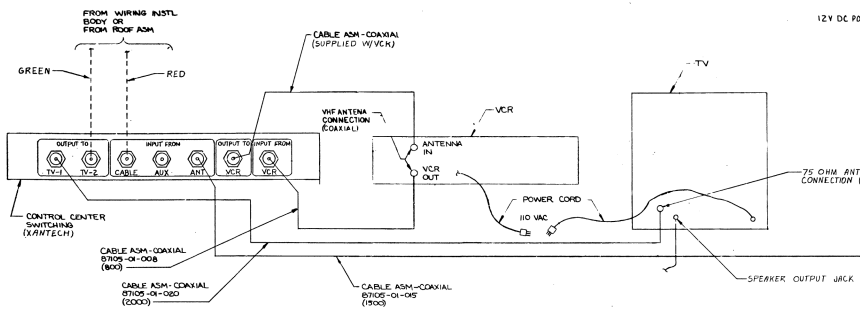
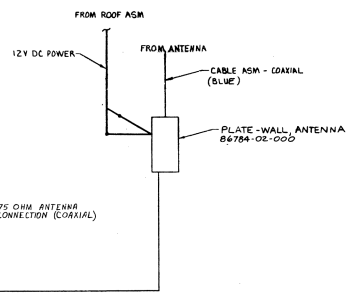
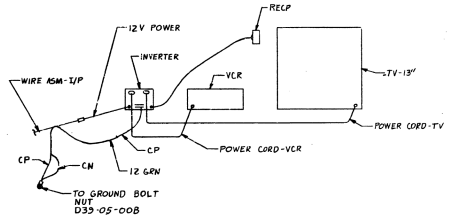
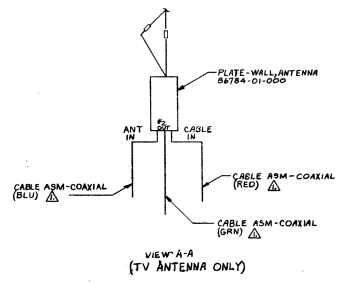
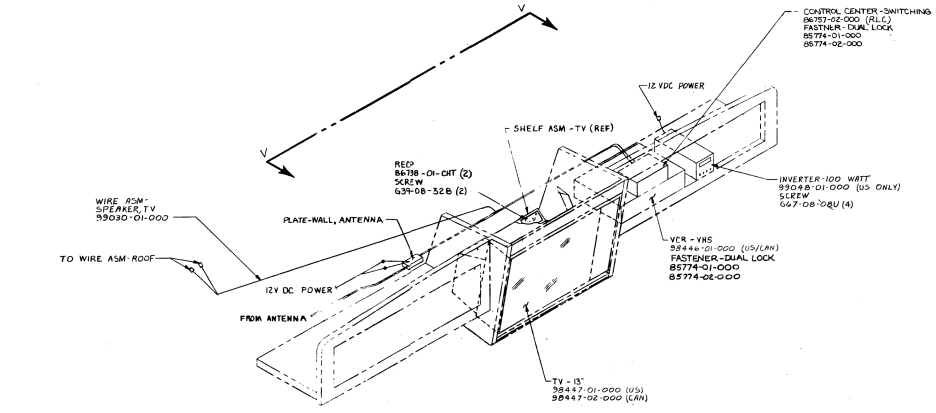
VIEW V-V
(TV AND VCR INSTL)
(ROTATED 180°)
WITHOUT INVERTER

NOTE: Δ CABLE ASM - MARKED WITH COLOR TAPE AS INDICATED

MAGNOVOX TV
MAGNOVOX VCR
CHANNELMASTER SWITCHER

WIRING INSTALLATION - FRONT END

8 10 E 97454



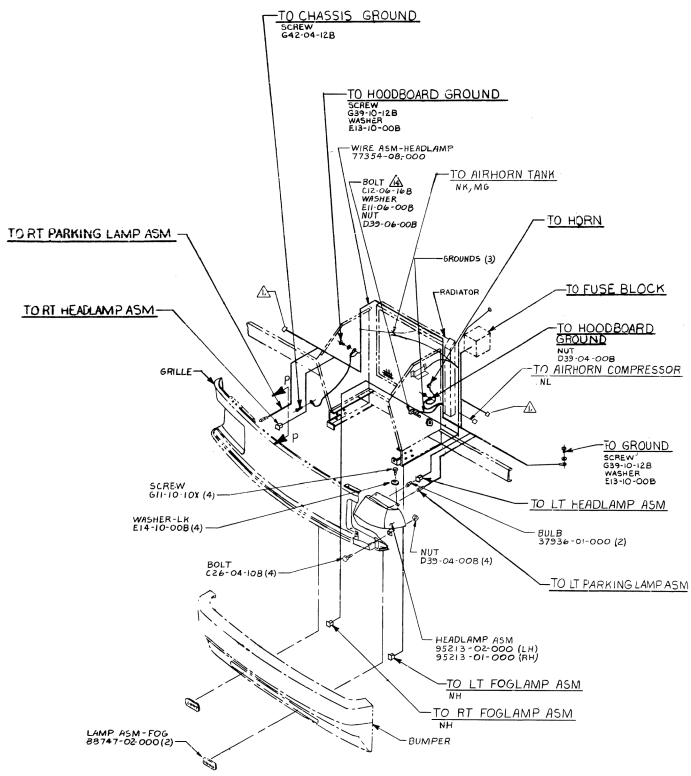
VIEW V-V
(TV AND VCR INSTL)
(ROTATED 180°)
WITHOUT INVERTER

NOTE: Δ CABLE ASM - MARKED WITH COLOR TAPE AS INDICATED

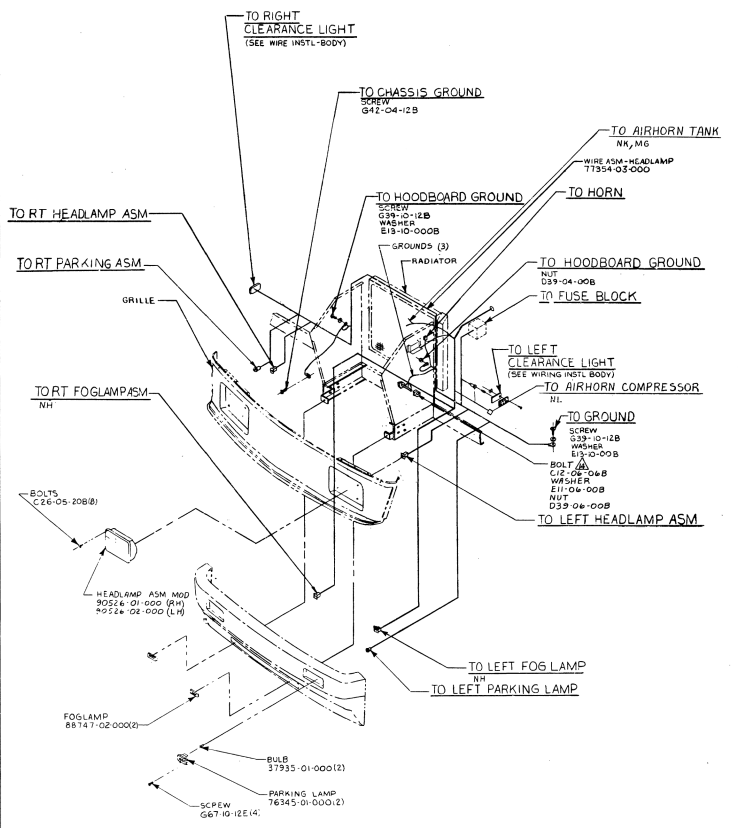
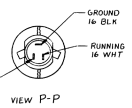
MAGNOVOX TV
MAGNOVOX VCR
XANTECH SWITCHER

WIRING INSTALLATION - FRONT END

974-54



ITASC A



W NNEBAGO

△ THE CLEARANCE LAMP SOCKET BACK TO MINH SPANGL WITH THE B343-01-000.

NOTES:

PIN WIRING INSTALLATION -	
FRONT END	
REV	DATE
1	974.54